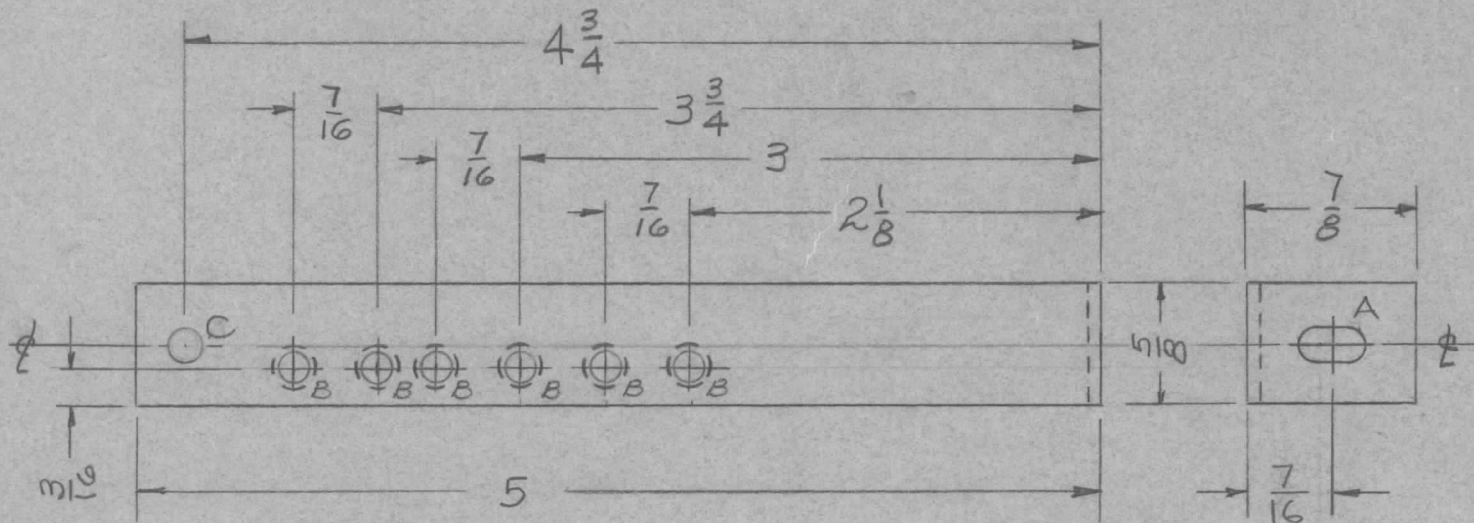


REQ. PER UNIT	USED ON			MS-1444	C
	MODEL	ASS'Y. NO.	DATE		
1	RTF-2	MULTI	12-22-58		



A - $\frac{11}{32} \times \frac{11}{64}$ SLOT 1 REQ
 B - $.161 \begin{matrix} +.003 \\ -.000 \end{matrix}$ 6 REQ
 C - $\frac{5}{32}$ (.156 D) 1 REQ

NOTE:

MT. ITEM ONE IN 6 'B' HOLES ON BACK SIDE AFTER IRIDITING.

REF: LD 480

							6	1	NT129-440-4	NUT, ROUND, SWAGE TYPE					
							REQ.	ITEM	PART NO.	DESCRIPTION	SYMBOL				
C		ADD IT. 1	11/16/70	20068	GE	W P.E.A.	.064 THICK			THE TECHNICAL MATERIEL CORP.					
B		C WAS "A" HOLE. "A" HOLE WAS 5/32 D. 7/16 DIM WAS 3/8	11-14-66	17230	WHO	JFB	STOCK SIZE			MAMARONECK, NEW YORK					
A	1	S404-YEL IRIDITE WAS 3101 CAUSTIC DIP	12-8	1001	P	EMN	ALUMINUM			BRACKET, TRIMMER MOUNTING					
ISSUE	ITEM	CHANGED FROM	DATE	CH. NO.	DRAFTS	CHECKER	ENG. APP.	MATERIAL							
TOLERANCES			SCALE: FULL SIZE				5052-H32			12/2/58	ave	JFB	JFB		
DEC. DIM. ±			MAXIMUM ALLOWABLE TOLERANCES HAVE BEEN DETERMINED AND ANY DEVIATIONS WILL BE CAUSE FOR REJECTION. REMOVE ALL BURRS AND SHARP EDGES				TYPE & TEMPER		HEATTREAT. SPEC.	DRAWN		CHECKED		FINAL APPROVAL	
FRAC. DIM. ± 1/64							S404-YEL IRIDITE								MS-1444
ANGULAR DIM. ±							FINISH & SPEC. NO.			ELEC. DES. APP		MECH. DES. APP			