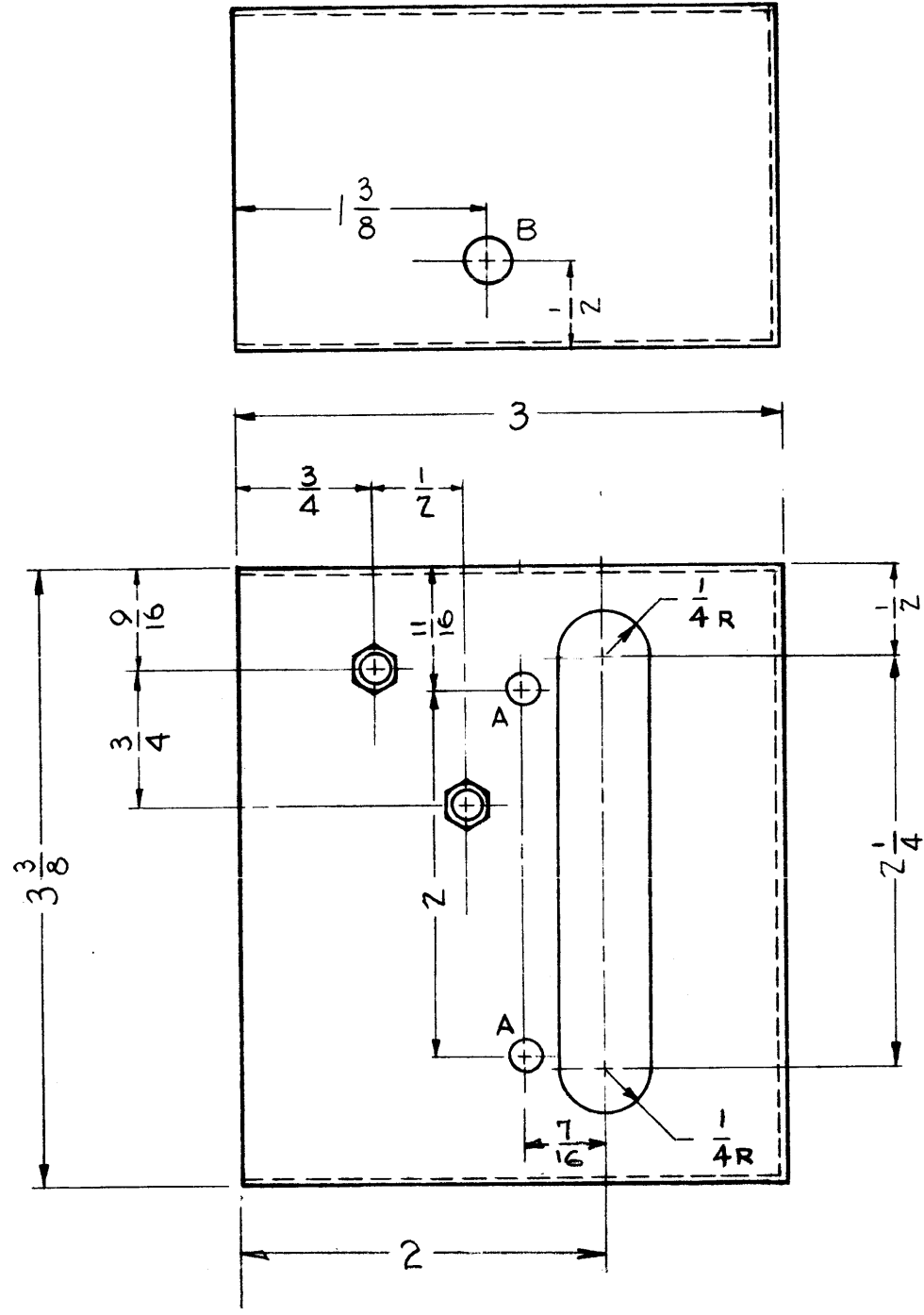
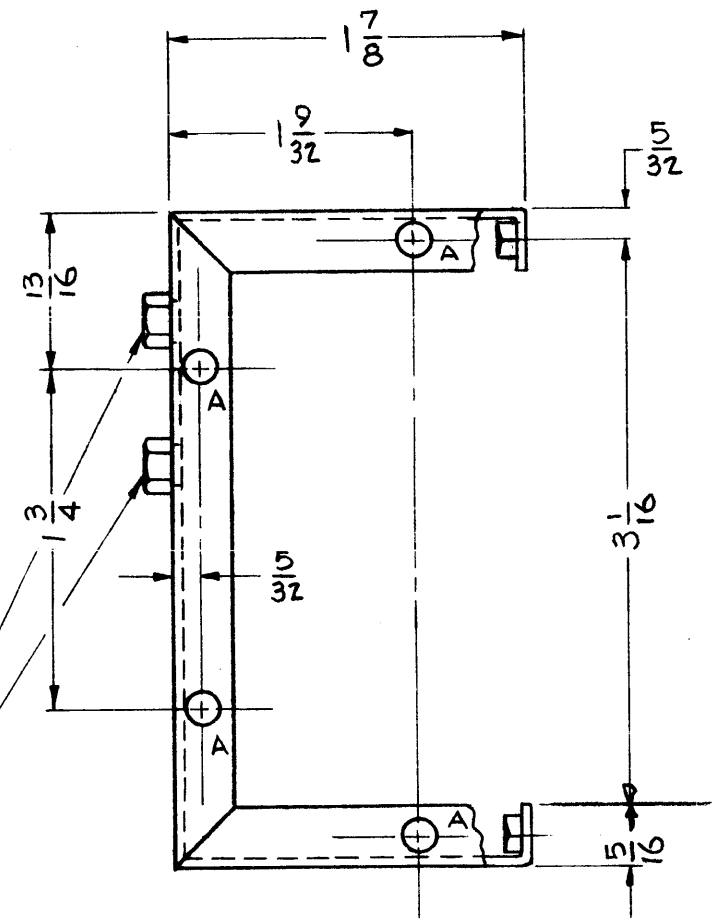


MS-1437 C

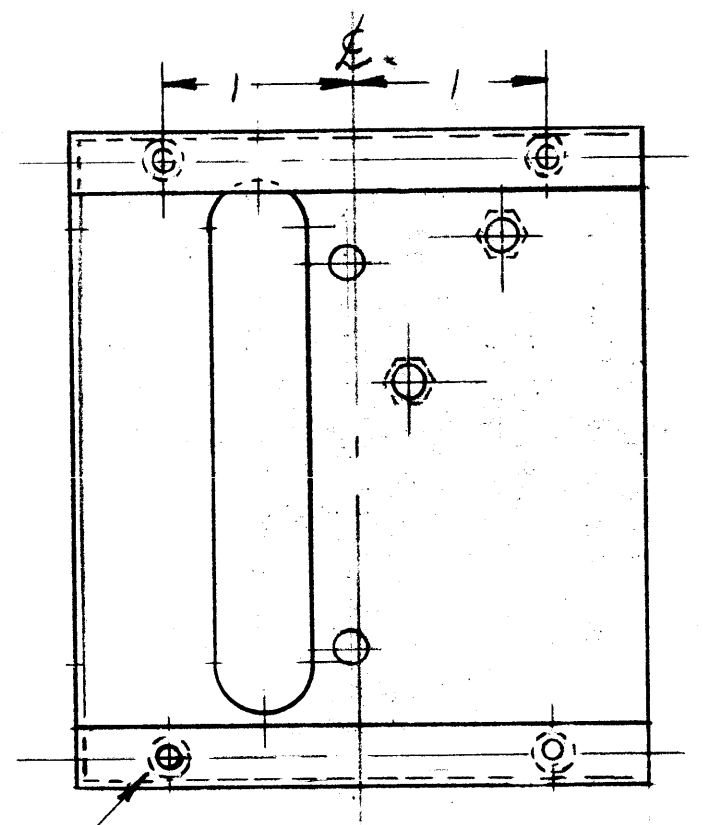
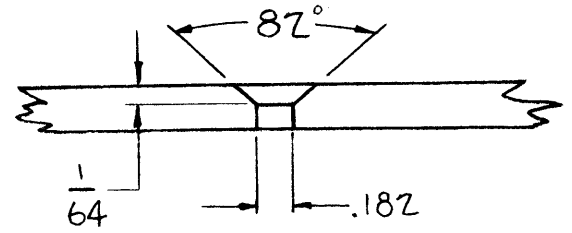


A - 11/64 (.171) DIA.
B - 1/4 (.250) DIA.

6 REQ'D.
1 REQ'D.



SM-107-12 - 2 REQ'D.
#14 DRILL (.182)
CTS'K 82° 1/64 DP.



SWAGE NUTS TMC # NT-129-440-3
4 REQ'D.
MOUNTING HOLE .160 DIA.

ISSUE	ITEM	CHANGED FROM	DATE	CH. NO.	DRAFTS	CHECKER	ENG. APP.
C	1	S-404 WAS S-101	12/15/59	1001	AB		EMN
B	2	SWAGE NUTS ADDED	1/21/59	671	JCB		
	1	FOUR SM-107-2 DELETED					
A	1	B HOLE ADDED	12-19-58	596	J.C.B.		
TOLERANCES			SCALE:				
DEC. DIM. ±			MAXIMUM ALLOWABLE TOLERANCE HAVE BEEN DETERMINED AND ANY DEVIATIONS WILL BE CAUSE FOR REJECTION: REMOVE ALL BURRS AND SHARP ED ES				
FRAC. DIM. ± 1/64							
ANGULAR DIM. ±							

REQ. PER UNIT	MODEL	PROJECT NO.	AS Y. NO.	DATE
1	GPT-10,500	IPA	685-2	12-15-58
USED ON				

REQ.	ITEM	PART NO.	DESCRIPTION	SYMBOL
		.051	THE TECHNICAL MATERIEL CORP.	
		STOCK SIZE	MAMARONECK, NEW YORK	
		ALUMINUM	DUCT, BLOWER	
		MATERIAL		
		5052-H32	J.C. BIELE	
		TYPE & TEMPER	CHECKED	FINAL APPROVAL
		HEAT TREAT. SPEC.		
		S-404 YELLOW IRIDITE		MS-1437 C
		FINISH & SPEC. N.	ELEC. DES. APP.	MECH. DES. APP.