

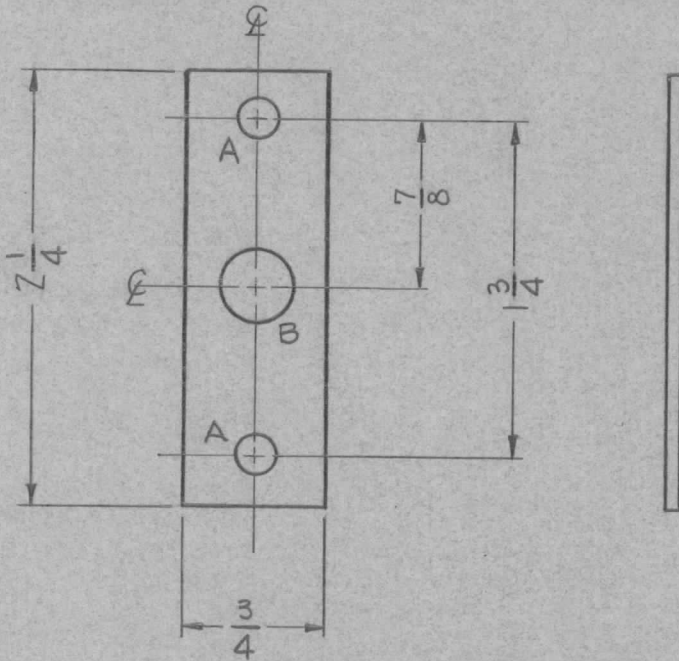
REQ. PER UNIT	USED ON			MS-1429 A
	MODEL	ASS'Y. NO.	DATE	
1	GPT-19000	IPA.	12-15-58	

A - 13/64 (.203) DIA.

2 REQ'D

B - 3/8 (.375) DIA.

1 REQ'D.



								REQ.	ITEM	PART NO.	DESCRIPTION	SYMBOL	
								.081		THE TECHNICAL MATERIEL CORP.			
								STOCK SIZE		MAMARONECK, NEW YORK			
								ALUMINUM		BRACKET, ROTOR MTG			
								MATERIAL					
A	1	S404-YEL-IRIDITE WAS S101 CAUSTIC D IP	12-8 59	1001	P		EMN	5052-H32		J.C.BIELE	JAB	AMB	
ISSUE	ITEM	CHANGED FROM	DATE	CH. NO.	DRAFTS	CHECKER	ENG. APP.	TYPE & TEMPER		DRAWN		CHECKED	
TOLERANCES			SCALE:					HEATTREAT. SPEC.		MECH. DES. APP		FINAL APPROVAL	
DEC. DIM. ±			MAXIMUM ALLOWABLE TOLERANCES HAVE					S404 YEL. IRIDITE				MS-1429 A	
FRAC. DIM. ± 1/64			BEEN DETERMINED AND ANY DEVIATIONS					FINISH & SPEC. NO.		ELEC. DES. APP			
ANGULAR DIM. ±			WILL BE CAUSE FOR REJECTION:										
			REMOVE ALL BURRS AND SHARP EDGES										