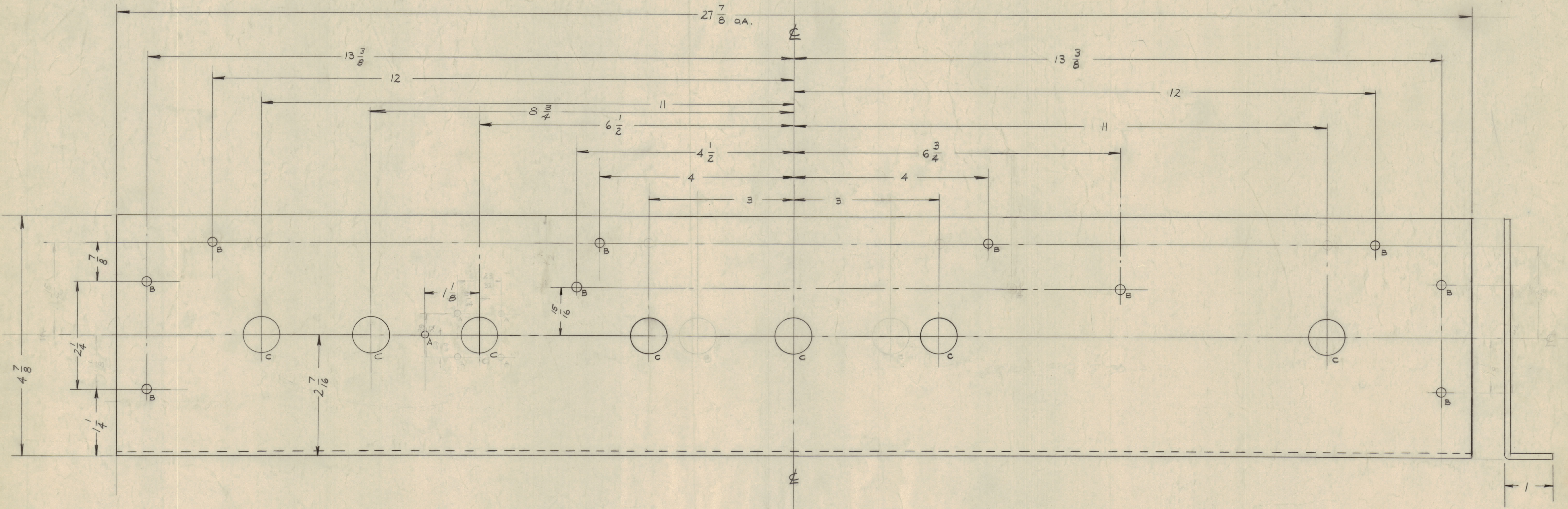


IF IT IS FOUND DESIRABLE TO CHANGE ANY TOLERANCE OR OTHER DETAIL SPECIFIED ON THIS DRAWING NOTIFY THE PURCHASER PROMPTLY.
 MAXIMUM ALLOWABLE TOLERANCES HAVE BEEN DETERMINED AND DEVIATIONS WILL BE CAUSE FOR REJECTION. REMOVE ALL BURRS AND SHARP EDGES

HOLES	REQD.
A - $\frac{9}{64}$ (.140) D.	1
B - $\frac{15}{64}$ (.234) D.	10
C - $\frac{3}{4}$ (.750) D.	7



MS-1411
A

NOTICE TO PERSONS RECEIVING THIS DRAWING

THE TECHNICAL MATERIEL CORPORATION claims proprietary right in the material disclosed herein. This drawing is issued in confidence for engineering information only and may not be reproduced or used to manufacture anything shown herein without permission from THE TECHNICAL MATERIEL CORPORATION to the user. This drawing is loaned for mutual assistance and is subject to recall at any time.

Property of:
 THE TECHNICAL MATERIEL CORPORATION
 MAMARONECK, NEW YORK

REF. 8LD-467

ISSUE	ITEM	CHANGED FROM	DATE	CN. NO.	DRAFTS	CHECKER	ENG. APP.
A	1	Letter (B) Added to Hole (B)	11-17-61	3940	RU	Q/K	Q/B

TOLERANCES: DEC. DIM. \pm 1/64; FRACTIONAL DIM. \pm 1/64; ANGULAR DIM. \pm 1/64

SCALE: DRILL, PUNCH, COMMERCIAL STOCK SIZES AND MANUFACTURERS TOLERANCES ARE NOT INCLUDED.

REQ. PER UNIT	MODEL	PROJECT NO.	ASSY. NO.	DATE
1	GPT-10K	AX-103		11-13-58

REQ. ITEM	PART NO.	DESCRIPTION	SYMBOL
	1/8 THICK	THE TECHNICAL MATERIEL CORP. MAMARONECK, NEW YORK	
	ALUMINUM	PANEL, REAR	
	5052-H32	HVR DECK	
		10BLLA 2B	
		DRAWN	
		ELEC. DES. APP.	
		MECH. DES. APP.	
		CHECKED	
		FINAL APPROVAL	
			MS-1411 A