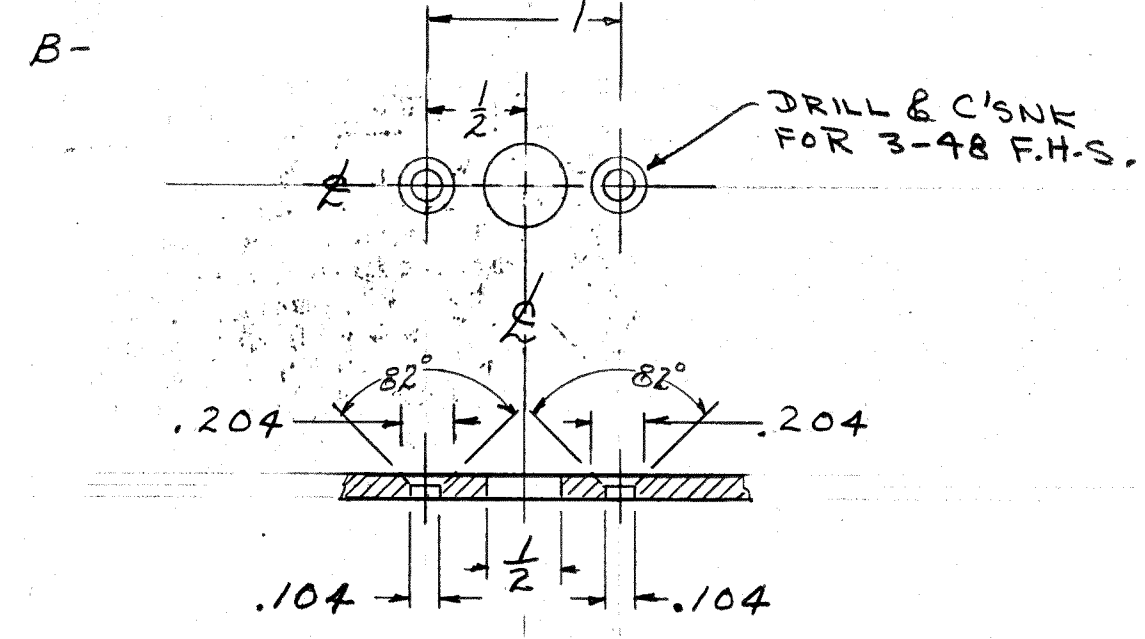


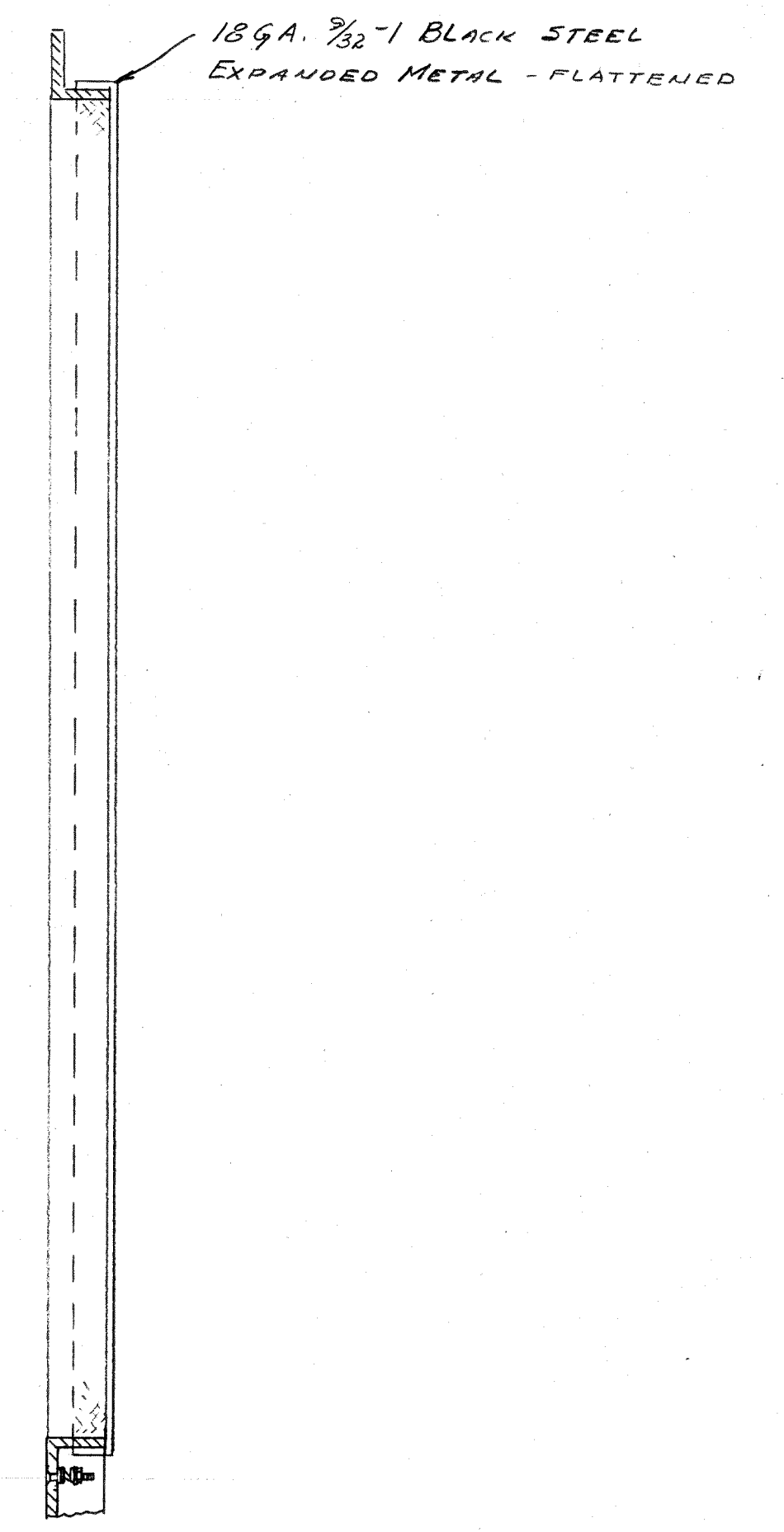
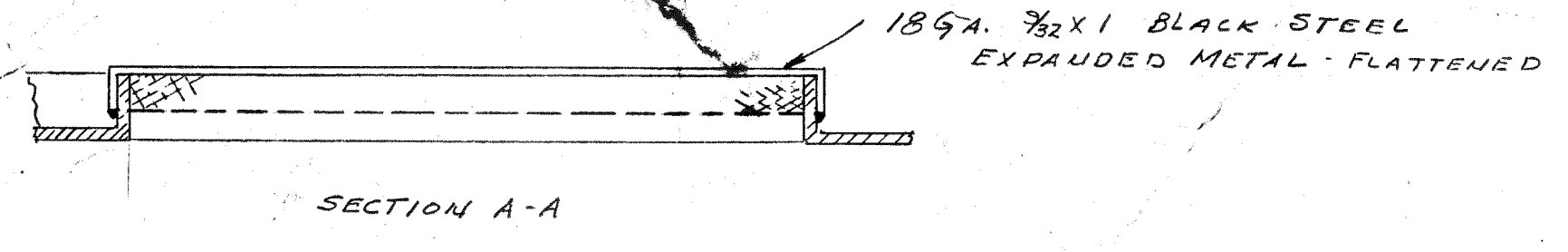
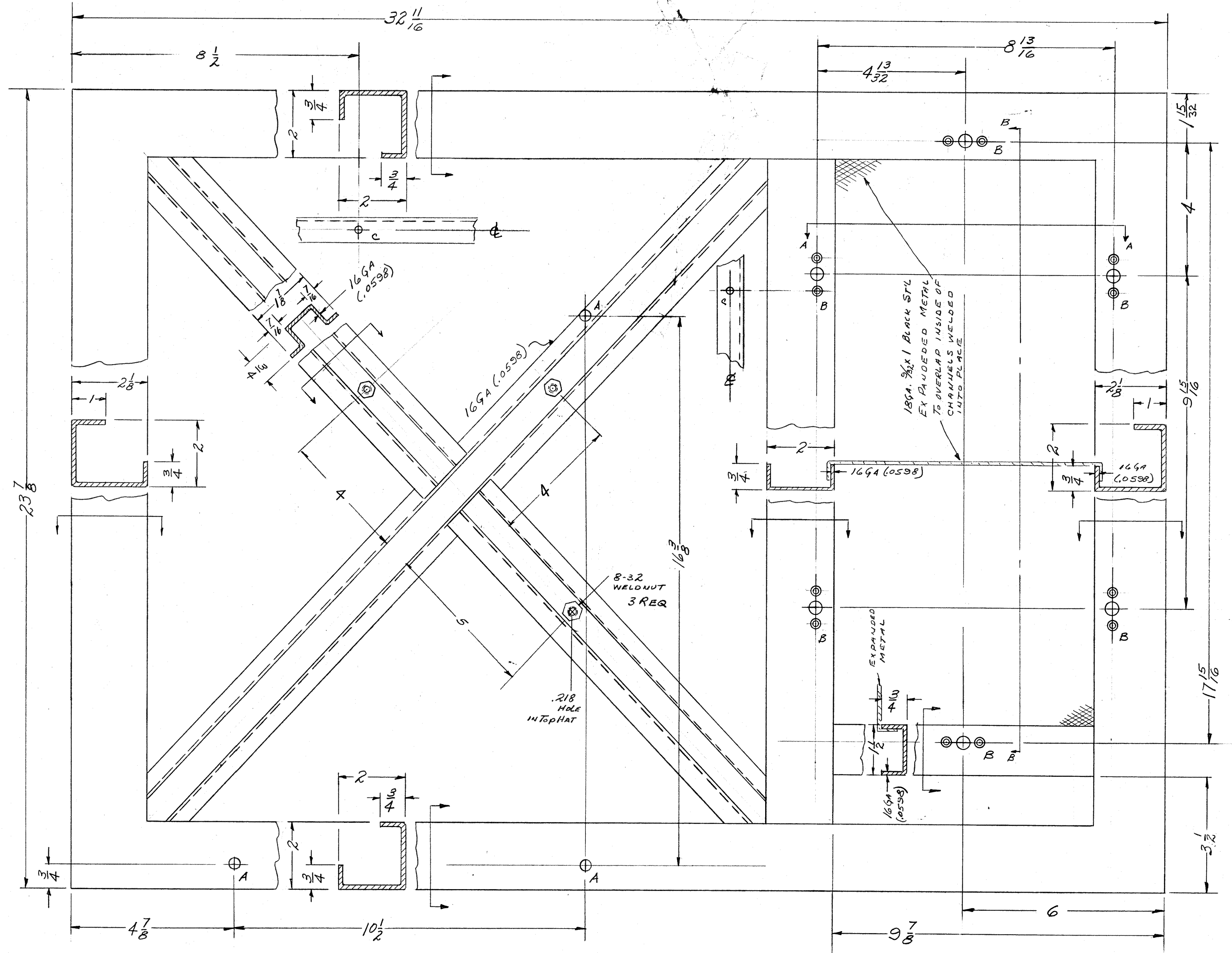
IF IT IS FOUND DESIRABLE TO CHANGE ANY TOLERANCE OR OTHER DETAIL SPECIFIED ON THIS DRAWING NOTIFY THE PURCHASER PROMPTLY.  
 MAXIMUM ALLOWABLE TOLERANCES HAVE BEEN DETERMINED AND DEVIATIONS WILL BE CAUSE FOR REJECTION. REMOVE ALL BURRS AND SHARP EDGES.

A -  $\frac{5}{16}$  (.312) DIA HOLES - 3 REQ.



DRILLING DETAIL FOR AIR FILTER MTS  
G REQ.

C -  $\frac{3}{16}$  (.187) DIA. HOLE - 2-REQ.



NOTICE TO PERSONS RECEIVING THIS DRAWING  
 THE TECHNICAL MATERIEL CORPORATION claims proprietary right in the material disclosed herein. This drawing is issued in confidence for engineering information only and may not be reproduced or used to manufacture anything shown herein without permission from THE TECHNICAL MATERIEL CORPORATION to the user. This drawing is loaned for mutual assistance and is subject to recall at any time.  
 Property of:  
 THE TECHNICAL MATERIEL CORPORATION  
 MAMARONECK, NEW YORK

NOTE:  
 ALL MEMBERS 12 GA (.105) UNLESS NOTED OTHERWISE

REV.	DATE	BY	CHKD.	DESCRIPTION
K	6/22/12	20740	GE	23
J	11/12/11	15893	WTD	23
H	2/15/11	8242	SEL	23
G	11/16/10	5807	RL	23
F	1/31/11	4019	DM	23
E	1/19/10	724	AK	23
D	1/14/10	616	AK	23
C	1/14/10	559	AK	23
B	1/14/10	-	AK	23
A	1/14/10	-	AK	23

ALL OTHERS	DEC. DIM. ±	FRAC. DIM. ±	ANGULAR DIM. ±	SEE	DRILL PUNCH, COMMERCIAL STOCK SIZES AND MANUFACTURERS TOLERANCES ARE NOT INCLUDED.
				SEE 5-396	

1	CAB-7	PROJECT NO.	ASSY. NO.	10-8-58	DATE
REQ PER UNIT	MODEL	PROJECT NO.	ASSY. NO.	DATE	USED ON

REQ. ITEM	PART NO.	DESCRIPTION	SYMBOL
12	6	NTH0348BNG	NUT, HEX
12	5	LW503MRN	LOCKWASHER, SPLIT
6	4	FS-102-4	SPRING, "S" TYPE
24	3	FW03HBN	WASHER, FLAT, .031 THK.
2		DELETED	
12	1	SCFS0348BNG	SCREW, MACHINE, FH, 3-48 x 3/8 LG

SEE 5-396		THE TECHNICAL MATERIEL CORP.	
STOCK SIZE		MAMARONECK, NEW YORK	
CABINET			
TOP VIEW			
MATERIAL	WEIGHT PER PC.	TYPE & TEMPER	10-8-58 LW
HEAT TREAT. SPEC.		CHECKED	FINAL APPROVAL
SEE 5-396		M5-1360 K	
FINISH & SPEC. NO.		SHEET 7 OF 12	

MS-1360 K