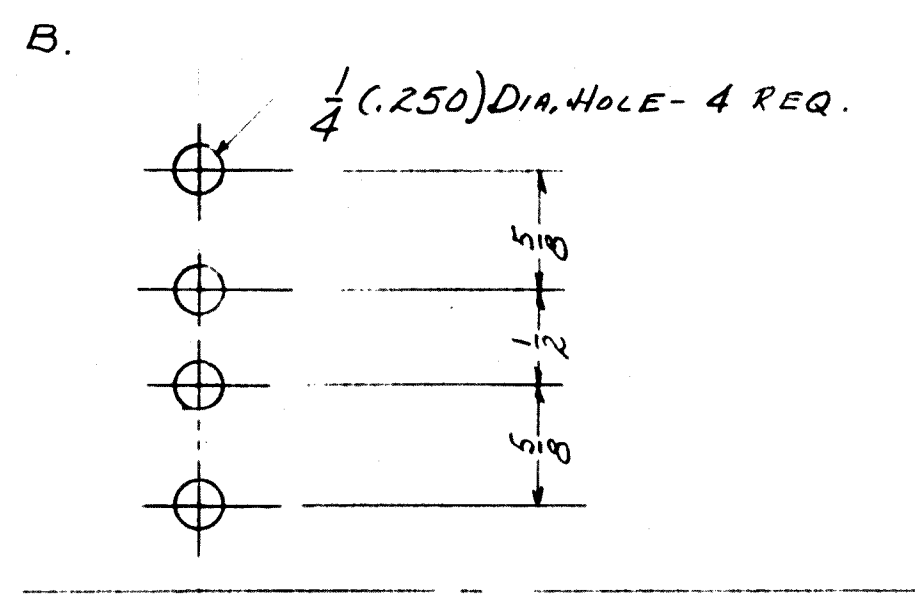
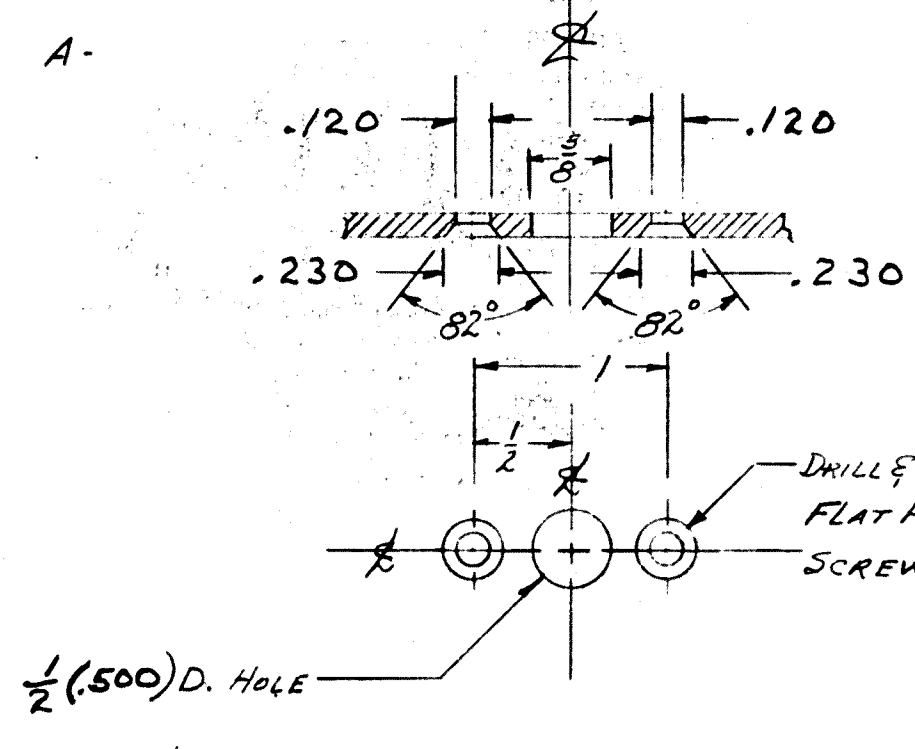


IF IT IS FOUND NECESSARY TO CHANGE ANY TOLERANCE OR OTHER DETAIL SPECIFIED ON THIS DRAWING NOTIFY THE PURCHASER PROMPTLY.
 MAXIMUM ALLOWABLE TOLERANCES HAVE BEEN DETERMINED AND DEVIATIONS WILL BE CAUSE FOR REJECTION.
 REMOVE ALL BURRS AND SHARP EDGES

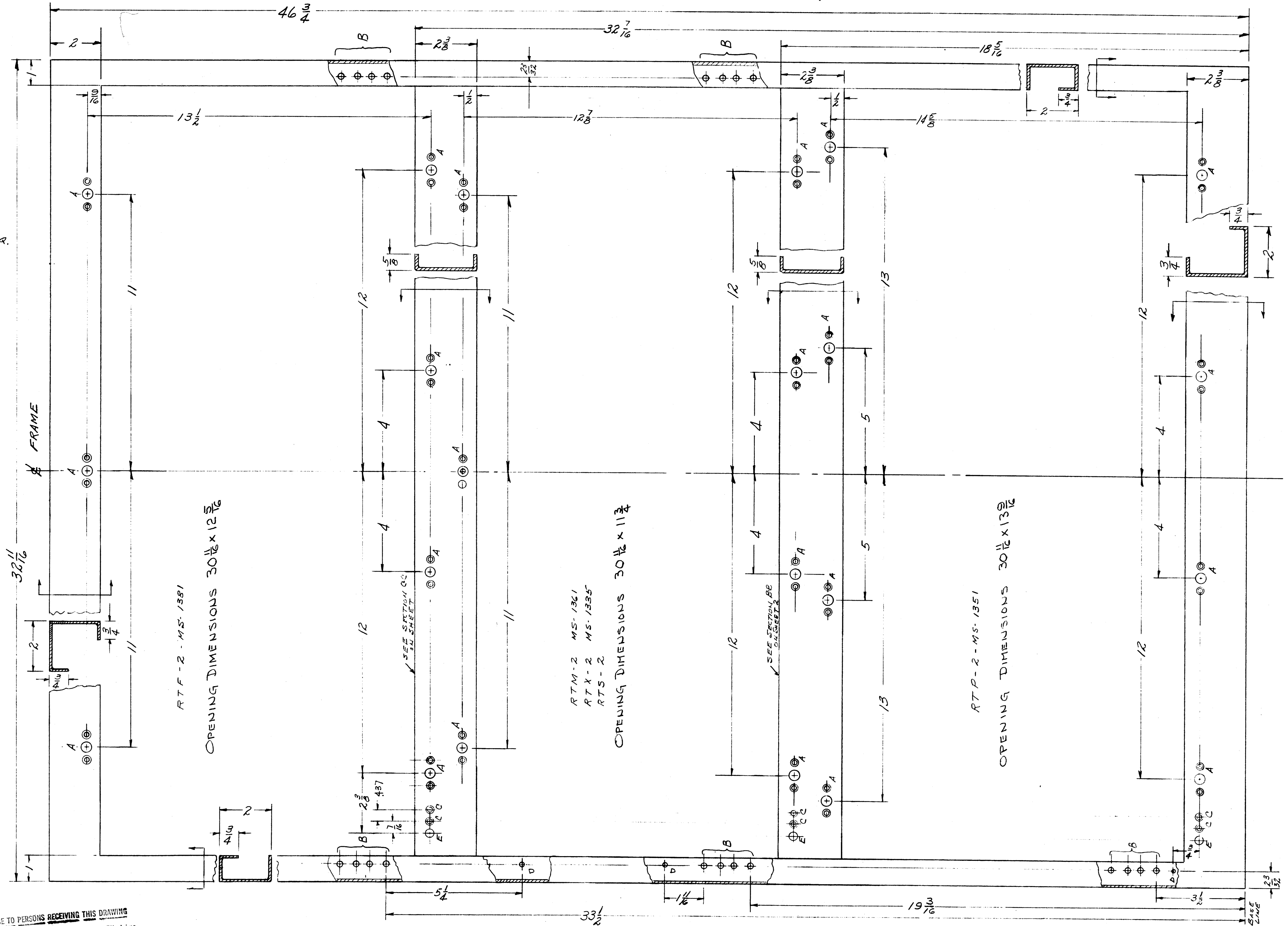


- E - 3/16 (.375) DIA. HOLE 3 REQ.
- D - 1/4 (.171) DIA. HOLE 3 REQ.
- C - DRILL & SINK FOR 6-32 FLATHEAD SCREW 6 REQ.

REV	ITEM	CHANGED FROM	DATE	EN. NO.	DRAFTS	CHECKER	ENG. APP.
K		SEE SHT 7	6/22/42	20710	GE		
J		SEE SHEET 1 OF 12	3/9/44	15893	WU		
H		SEE SHEET 11 OF 12	2/15/43	8242			
G		See Sheet 12 of 12	11/6/41	5807	KU		
F		Revision Letter Clarified	1/31/61	4019			
E	2	"E" HOLE WAS 5/16	1/4/58				
E	1	19 3/16 WAS 19 3/8					
D		4-40 SINK DETAIL WAS 6-32	1/4/58	616			
C		REVISION LETTER WAS BY	1/14/41	587			
B		"D" 5/16 BELOW THE HOLE	1/14/41	572			
A		"D" HOLES RELOCATED	1/4/58	558			

NOTICE TO PERSONS RECEIVING THIS DRAWING
 THE TECHNICAL MATERIEL CORPORATION claims proprietary right in the material disclosed hereon. This drawing is issued in confidence for engineering information only and may not be reproduced or used to manufacture anything shown hereon without permission from THE TECHNICAL MATERIEL CORPORATION to the user. This drawing is loaned for mutual assistance and is subject to recall at any time.
 Property of:
 THE TECHNICAL MATERIEL CORPORATION
 MAMARONECK, NEW YORK

NOTE: MATERIAL 12GA (1046) MILD STEEL UNLESS NOTED OTHERWISE.



REQ. ITEM	PART NO.	DESCRIPTION	SYMBOL
1	CAB-7	THE TECHNICAL MATERIEL CORP. MAMARONECK, NEW YORK	
SEE S-396		CABINET	
STOCK SIZE		FRONT VIEW	
MATERIAL		10-8-58	
TYPE & TEMPER		MECH. DES. APP. RFB	
HEAT TREAT. SPEC.		DRAWN	
FINISH & SPEC. NO.		CHECKED	
SHEET 3 OF 12		MS-1360 K	

REQ. PER UNIT	MODEL	PROJECT NO.	ASSY. NO.	DATE
1	CAB-7			10-11-58

MS-1360 K