

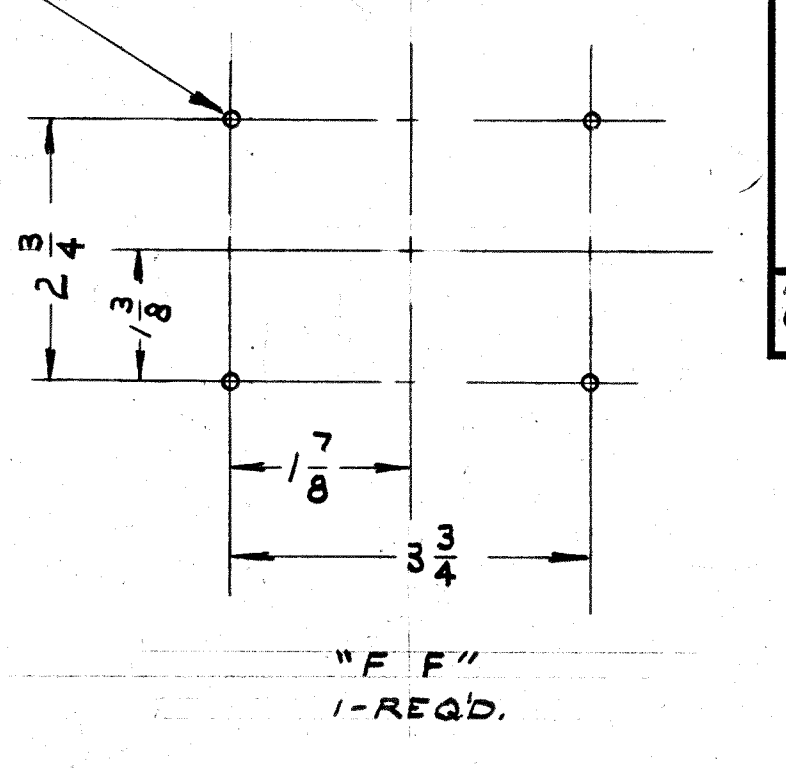
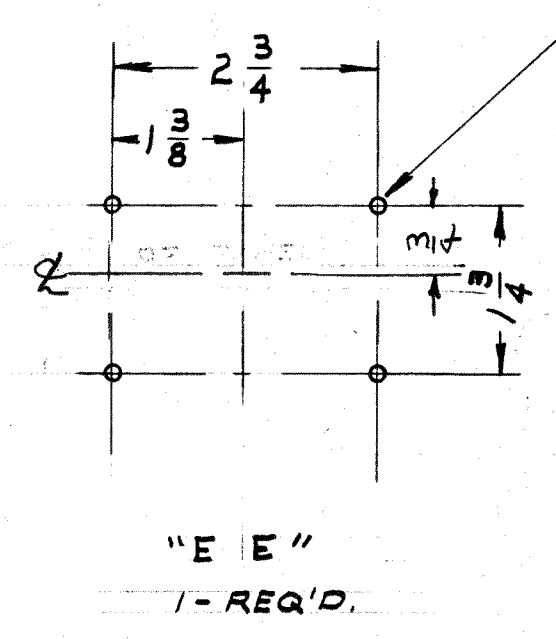
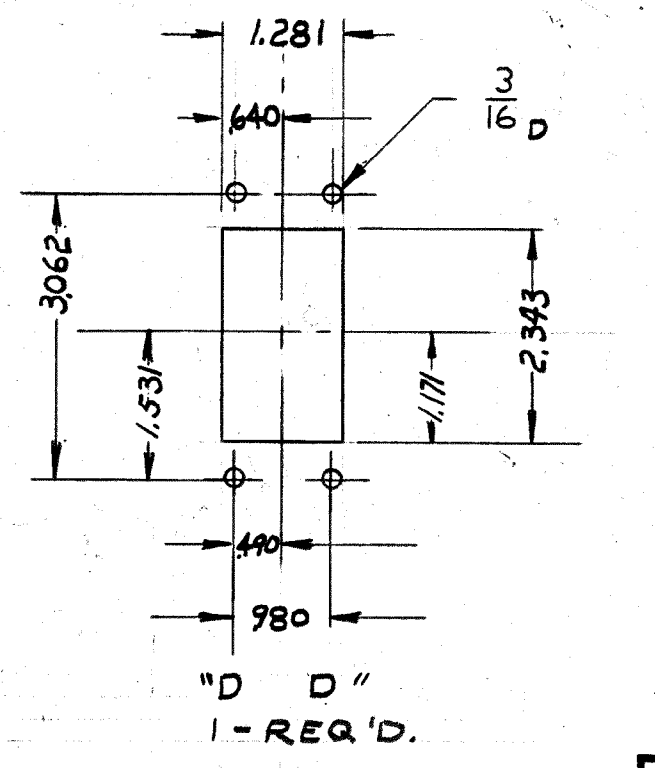
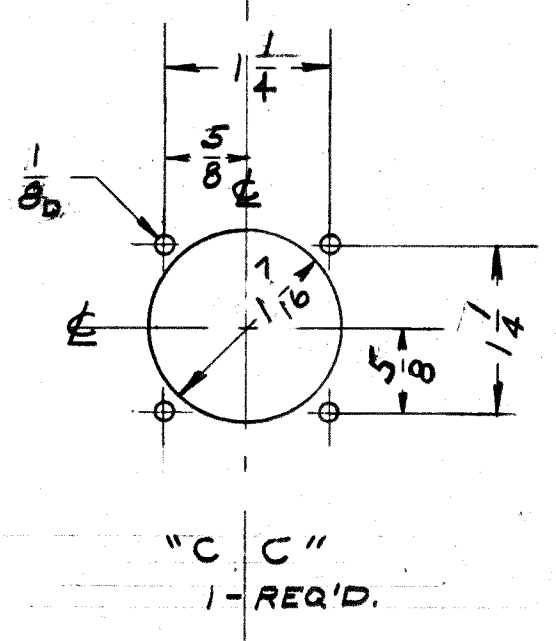
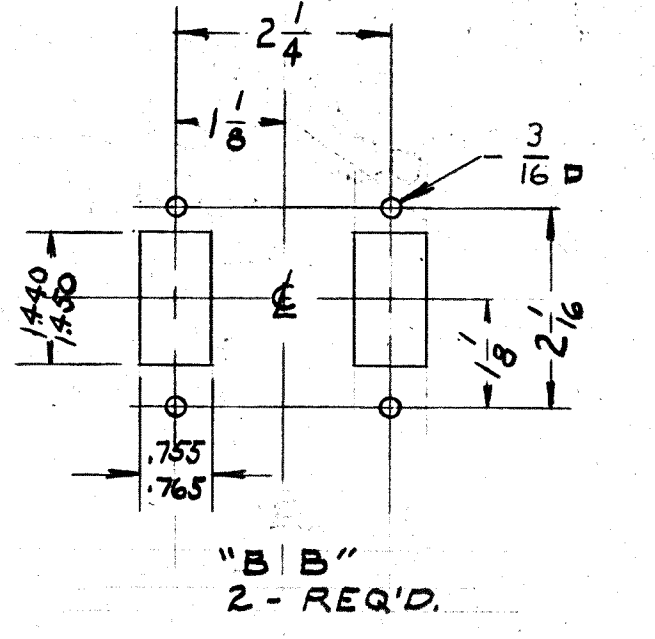
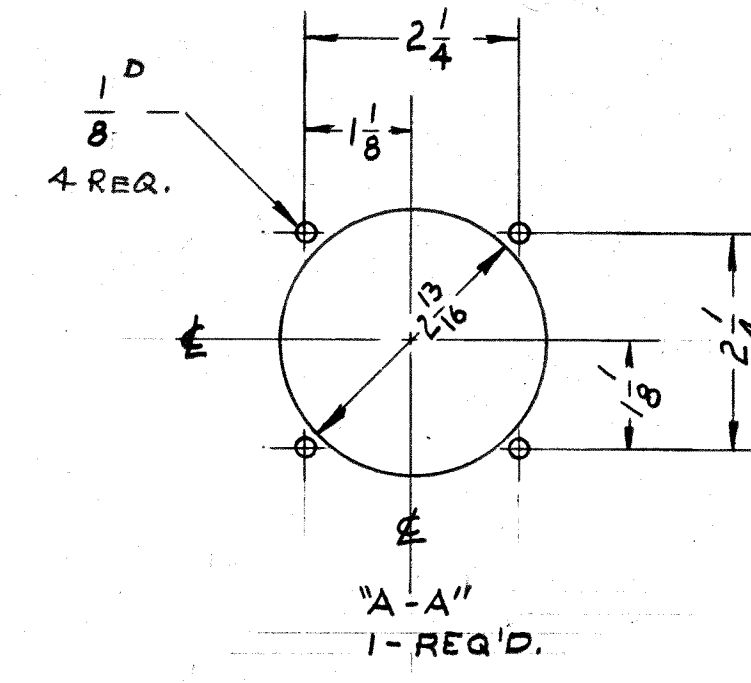
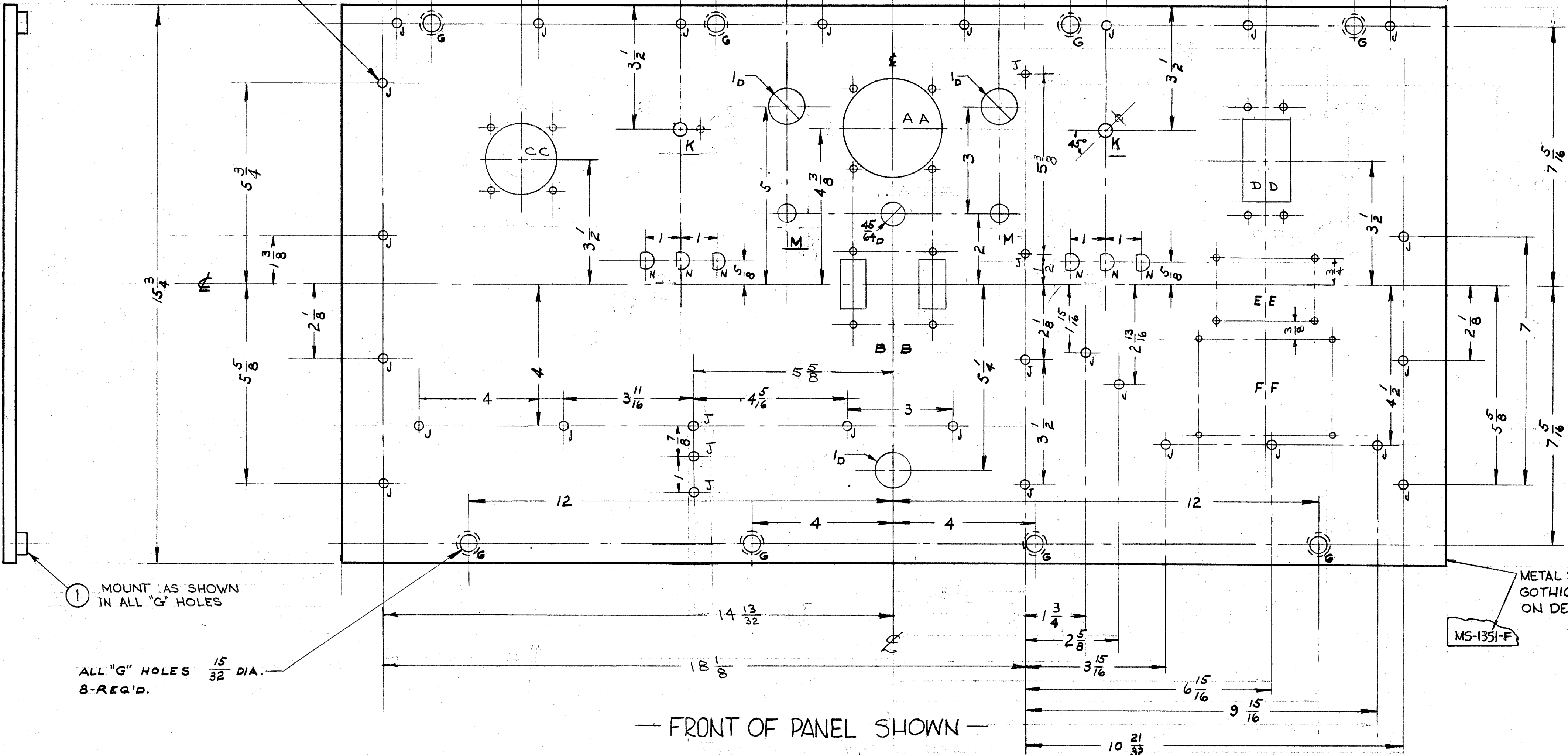
IF IT IS FOUND DESIRABLE TO CHANGE ANY TOLERANCE OR OTHER DETAIL SPECIFIED ON THIS DRAWING NOTIFY THE PURCHASER PROMPTLY.
 MAXIMUM ALLOWABLE TOLERANCES HAVE BEEN DETERMINED AND DEVIATIONS WILL BE CAUSE FOR REJECTION.
 REMOVE ALL BURRS AND SHARP EDGES

NOTICE TO PERSONS RECEIVING THIS DRAWING

THE TECHNICAL MATERIEL CORPORATION claims proprietary right in the material disclosed herein. This drawing is issued in confidence for engineering information only and may not be reproduced or used to manufacture anything shown hereon without permission from THE TECHNICAL MATERIEL CORPORATION to the user. This drawing is loaned for mutual assistance and is subject to recall at any time.

Property of:
 THE TECHNICAL MATERIEL CORPORATION
 MAMARONECK, NEW YORK

ALL "J" HOLES 15/64 DIA. 234 REQ'D.



1 MOUNT AS SHOWN IN ALL "G" HOLES

ALL "G" HOLES 15/32 DIA. 8-REQ'D.

METAL STAMP TMC PART NO. 1/8 HIGH GOTHIC ON REAR OF PANEL AS SHOWN ON DETAIL
 MS-1351-F

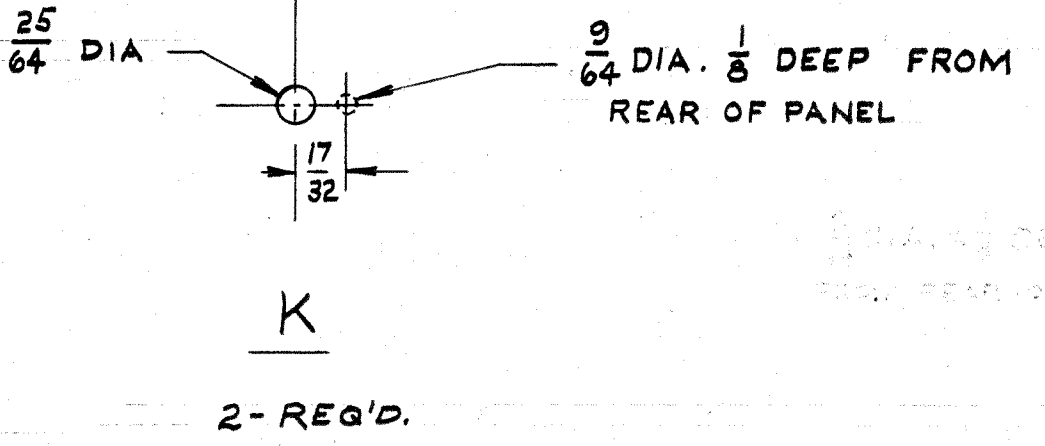
NOTES

- FINISH -**
 S404 YELLOW IRIDITE
 S114 ZINC CHROMATE PRIMER
 S115 TMC SMOOTH GREY ENAMEL FRONT
 OR PRIME & PAINT TO CUST. SPEC. EDGE ONLY

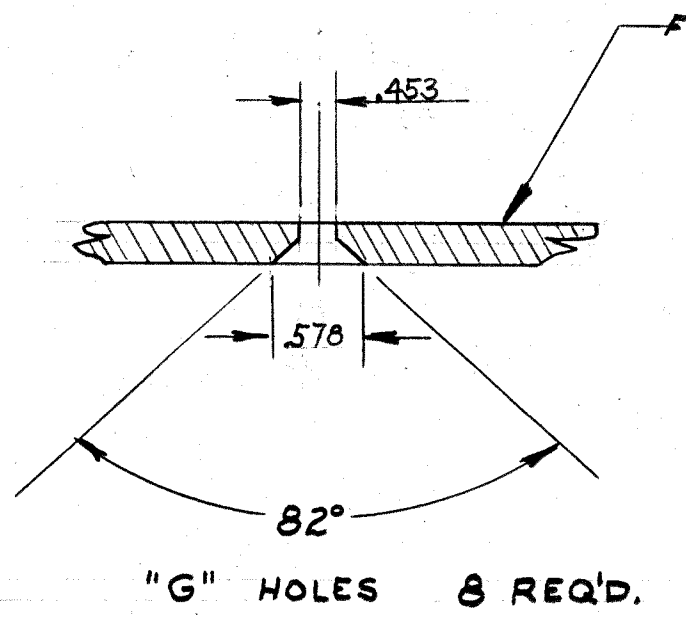
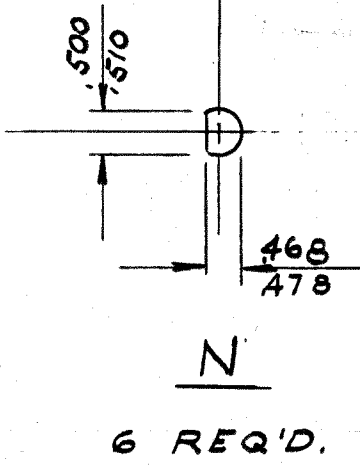
- MACHINING -**
 1- LATERAL BOW OF PANEL MUST BE KEPT TO .031 TOLERANCE
 2- MILL ALL EDGES
 3- HOLES MUST BE DRILLED
 4- PANEL MUST BE FREE OF ALL MACHINING MARKS, GOUGES, AND SCRATCHES IF NECESSARY SAND FRONT OF PANEL WITH NO. 120 GRIT SANDPAPER

REF: LD451 (S) ENGRAVING & MS-1363

3	DELE REF LD 162	11/70	DRG	GE			
1	ITEM (1) ASIDE VIEW ADDED	4/22/53	5823	EA	JK		
1	1/16 DIA HOLES WERE 11/64 DIA ON "B-B" & "D-D" DETAILS	11-3-61	5800	EA	JK		
1	S-404 YEL IRIDITE WAS S-101 CAUSTIC DIP	4/9	1001	AB	JK		
1	453 WAS 152	1/59	1650	AB	JK		
1	574 WAS 574	1/13	623	AK	JK		
1	574 WAS 574	1/13	623	AK	JK		
1	ADDED "J" HOLE	12/15/58	552	AK	JK		
1	C-C DETAIL CHANGED	7/21/58		PEZ	JK		
ISSUE	ITEM	CHANGED FROM	DATE	CH. NO.	DRAFTS	CHECKER	ENG. APP.
TOLERANCES				SCALE: #			
ALL	DEC. DIM.	± .053	DRILL, PUNCH, COMMERCIAL STOCK				
OTHER	FRACTIONAL DIM.	± 1/64	SIZES AND MANUFACTURERS				
	ANGULAR DIM.	± 2°	TOLERANCES ARE NOT INCLUDED.				



M - 17/32 D - 2 REQ'D



1	RTP-2	PROJECT NO.	10-7-58
REQ PER UNIT	MODEL	ASSY. NO.	DATE
USED ON			

B 1	NT-124	CAPTIVE INSERT	"G"
REQ. ITEM	PART NO.	DESCRIPTION	SYMBOL
3/16	MAT'L.	THE TECHNICAL MATERIEL CORP. MAMARONECK, NEW YORK	
ALUMINUM		PANEL, FRONT	
2024-T3		RTP-2	
TYPE & TEMPER		DRAWN: [Signature]	
HEAT TREAT. SPEC.		ELEC. DES. APP. [Signature]	
CHECKED: [Signature]		FINAL APPROVAL [Signature]	
SEE FINISH NOTE		MS-1351 G	
FINISH & SPEC. NO.			