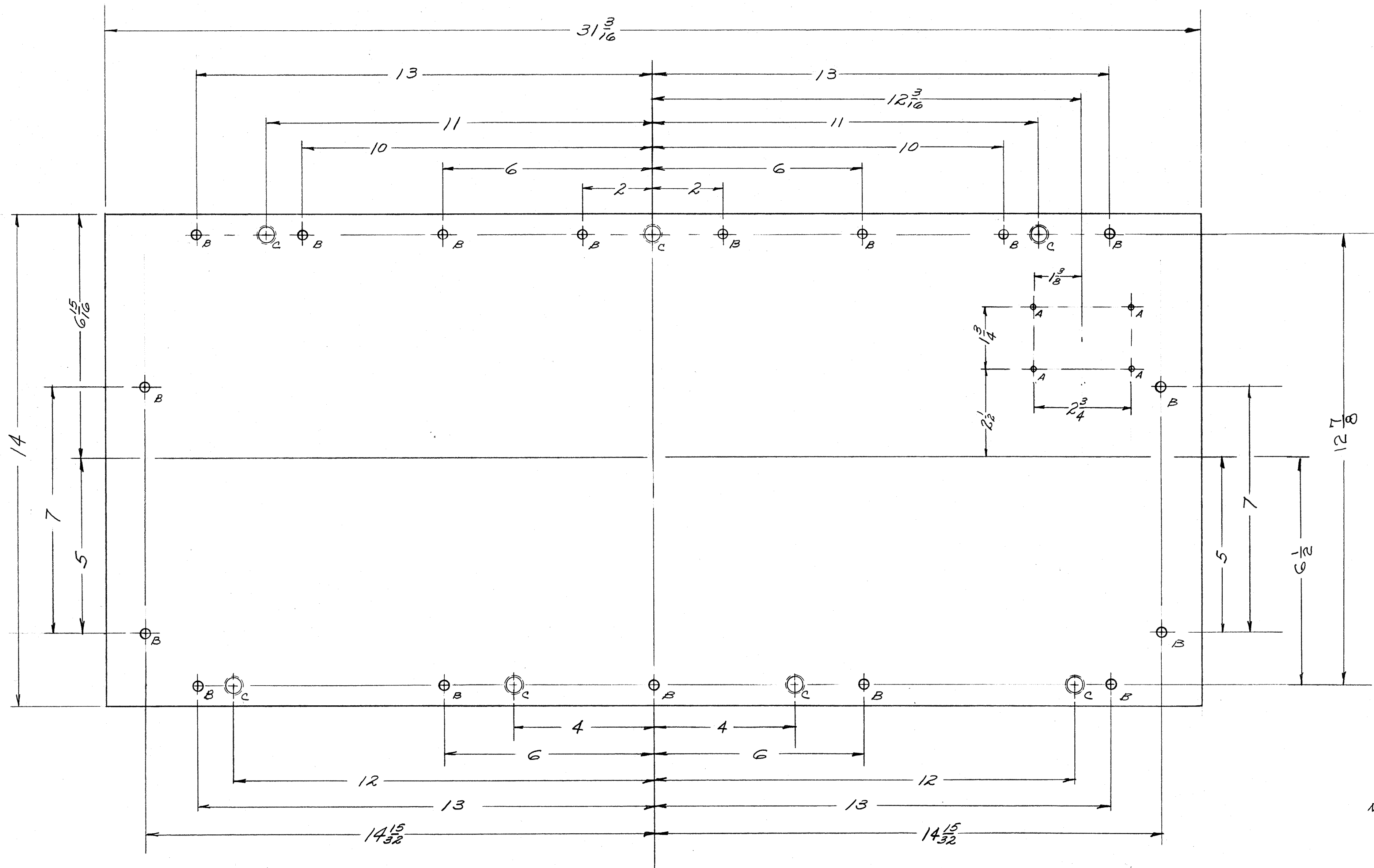


IF IT IS FOUND DESIRABLE TO CHANGE ANY TOLERANCE OR OTHER DETAIL SPECIFIED ON THIS DRAWING NOTIFY THE PURCHASER PROMPTLY.
 MAXIMUM ALLOWABLE TOLERANCES HAVE BEEN DETERMINED AND DEVIATIONS WILL BE CAUSE FOR REJECTION.
 REMOVE ALL BURRS AND SHARP EDGES

NOTICE TO PERSONS RECEIVING THIS DRAWING

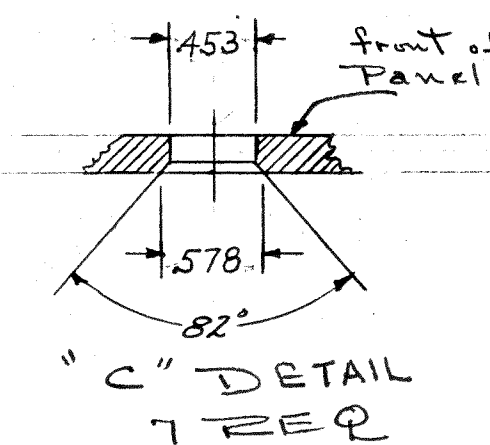
THE TECHNICAL MATERIEL CORPORATION claims proprietary right in the material disclosed hereon. This drawing is issued in confidence for engineering information only and may not be reproduced or used to manufacture anything shown hereon without permission from THE TECHNICAL MATERIEL CORPORATION to the user. This drawing is loaned for mutual assistance and is subject to recall at any time.

Property of:
 THE TECHNICAL MATERIEL CORPORATION
 MAMARONECK, NEW YORK



HOLE LEGEND

- A- # 47 DRILL (.0785) DIA HOLE 4 REQ.
- B- $\frac{15}{64}$ (.234) DIA. HOLE 17 REQ.
- C- DETAIL "C" 7 REQ.



NOTES.

1. LATERAL BOW OF PANEL MUST BE KEPT TO .031 TOL.
2. HOLES MUST BE DRILLED.
3. MILL ALL EDGES.
4. PANEL MUST BE FREE OF ALL MACHINING MARKS, GROUDES AND SCRATCHES. IF NECESSARY SAND FRONT OF PANEL WITH #120 GRIT SANDPAPER.

FINISH: FRONT & EDGES ONLY

- S-404 YELLOW IRIDITE
- S-114 ZINC CHROMATE PRIMER
- S-115 SMOOTH GRAY ENAMEL

REF.: PH-504, PH-505

REQ. ITEM	PART NO.	DESCRIPTION	SYMBOL
	3/16 THICK	THE TECHNICAL MATERIEL CORP. MAMARONECK, NEW YORK	
	ALUMINUM CPO	MACHINING, FRONT PANEL	
	2020-T3	MODEL RTY-2	
	TYPE & TEMPER	10-20-53	
	CPO	DRAWN	
	HEAT TREAT. SPEC.	CHECKED	
	SEE NOTES	APPROVAL	
	FINISH & SPEC. NO.		

REQ. PER UNIT	MODEL	PROJECT NO.	ASSY. NO.	DATE
1	RTY-2			10-20-53

ISSUE ITEM	CHANGED FROM	DATE	CN. NO.	DRAFTS	CHECKER	ENG. APP.
A	S-404 YEL IRIDITE WAS S-104 CAUSTIC DIP 453 WAS 1/8 578 WAS 1/32	12/9/59	1001		EMN	
			1650			

FORM-111

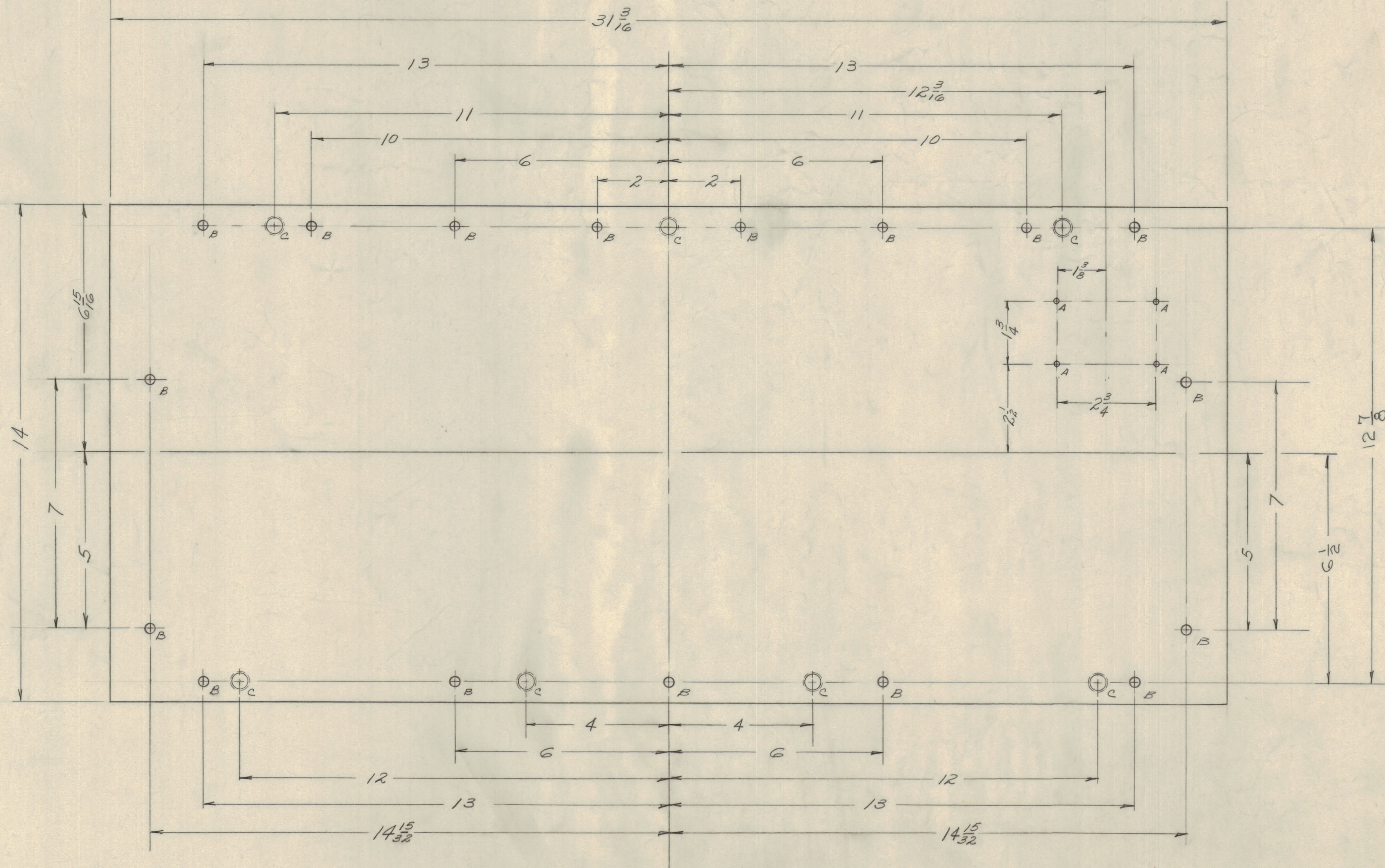
MS-1386 A

IF IT IS FOUND DESIRABLE TO CHANGE ANY TOLERANCE OR OTHER DETAIL SPECIFIED ON THIS DRAWING NOTIFY THE PURCHASER PROMPTLY.
 MAXIMUM ALLOWABLE TOLERANCES HAVE BEEN DETERMINED AND DEVIATIONS WILL BE CAUSE FOR REJECTION.
 REMOVE ALL BURRS AND SHARP EDGES

NOTICE TO PERSONS RECEIVING THIS DRAWING

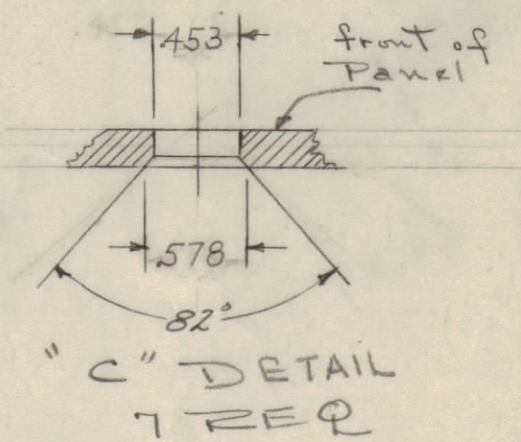
THE TECHNICAL MATERIEL CORPORATION claims proprietary right in the material disclosed herein. This drawing is issued in confidence for engineering information only and may not be reproduced or used to manufacture anything shown herein without permission from THE TECHNICAL MATERIEL CORPORATION to the user. This drawing is loaned for mutual assistance and is subject to recall at any time.

Property of:
 THE TECHNICAL MATERIEL CORPORATION
 MAMARONECK, NEW YORK



HOLE LEGEND

A-	# 47 DRILL (.0785) DIA HOLE	4 REQ.
B-	15 (.234) DIA. HOLE	17 REQ.
C-	DETAIL "C"	7 REQ.



- NOTES.**
1. LATERAL BOW OF PANEL MUST BE KEPT TO .031 TOL.
 2. HOLES MUST BE DRILLED.
 3. MILL ALL EDGES.
 4. PANEL MUST BE FREE OF ALL MACHINING MARKS, GROUES AND SCRATCHES. IF NECESSARY SAND FRONT OF PANEL WITH #120 GRIT SANDPAPER.

FINISH: FRONT & EDGES ONLY
 S-404 YELLOW IRIDITE
 S-114 ZINC CHROMATE PRIMER
 S-115 SMOOTH GRAY ENAMEL

REF.: PH-504, PH-505

REQ. PER UNIT	ITEM	PART NO.	DESCRIPTION	SYMBOL
		3/16 THICK	THE TECHNICAL MATERIEL CORP. MAMARONECK, NEW YORK	
		ALUMINUM	MACHINING, FRONT PANEL	
		2020-T3	MODEL RTY-2	
		C/P	DRAWN	
		HEAT TREAT SPEC.	CHECKED	
		SEE NOTES	FINAL APPROVAL	
		FINISH & SPEC. NO.		MS-1386 A

1	RTY-2	PROJECT NO.	ASSY. NO.	10-20-58	DATE
		USED ON			

5-404 YEL IRIDITE WAS S-101 CAUSTIC DIP .453 WAS 1952 .578 WAS 1952	12/10/59	1001	165D	EMN	
ISSUE	CHANGED FROM	DATE	CN. NO. DRAFTS	CHECKER	ENG. APP.
TOLERANCES		SCALE: 6" = 1' 0"			
ALL OTHERS	DEC. DIM. ± FRAC. DIM. ± ANGULAR DIM. ±	DRILL, PUNCH, COMMERCIAL STOCK SIZES AND MANUFACTURERS TOLERANCES ARE NOT INCLUDED.			

MS-1386 A