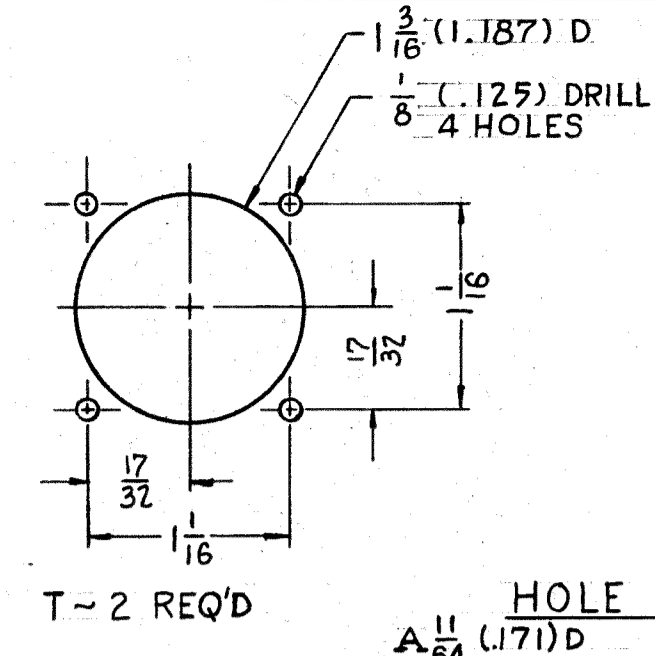
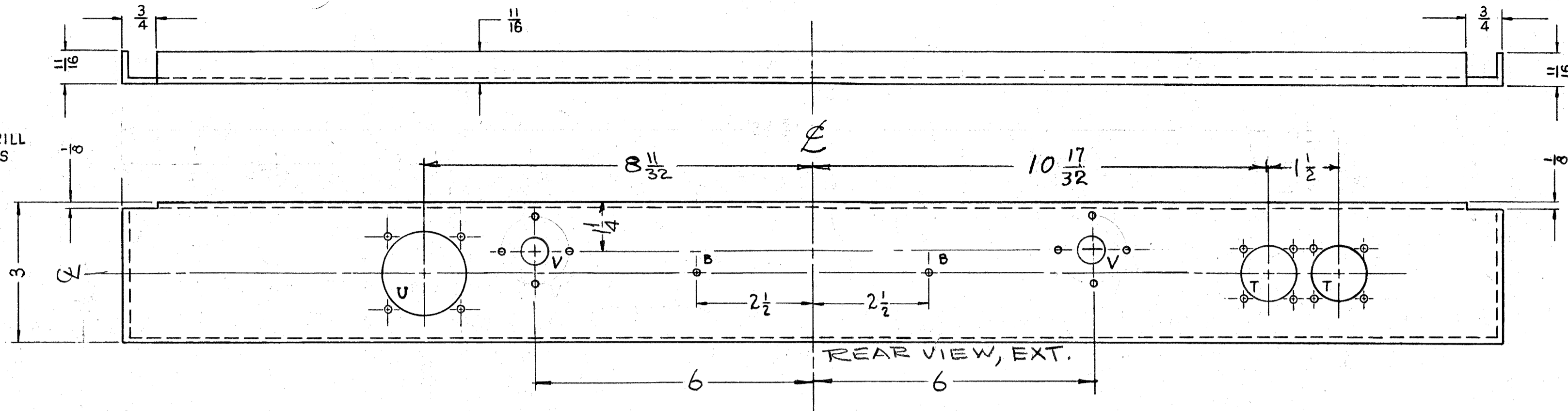
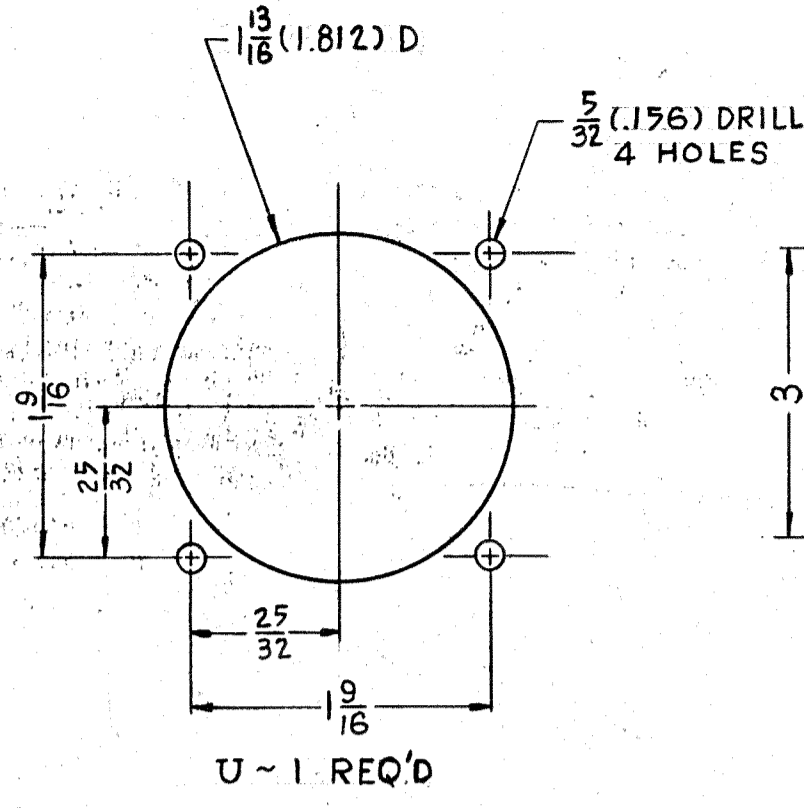


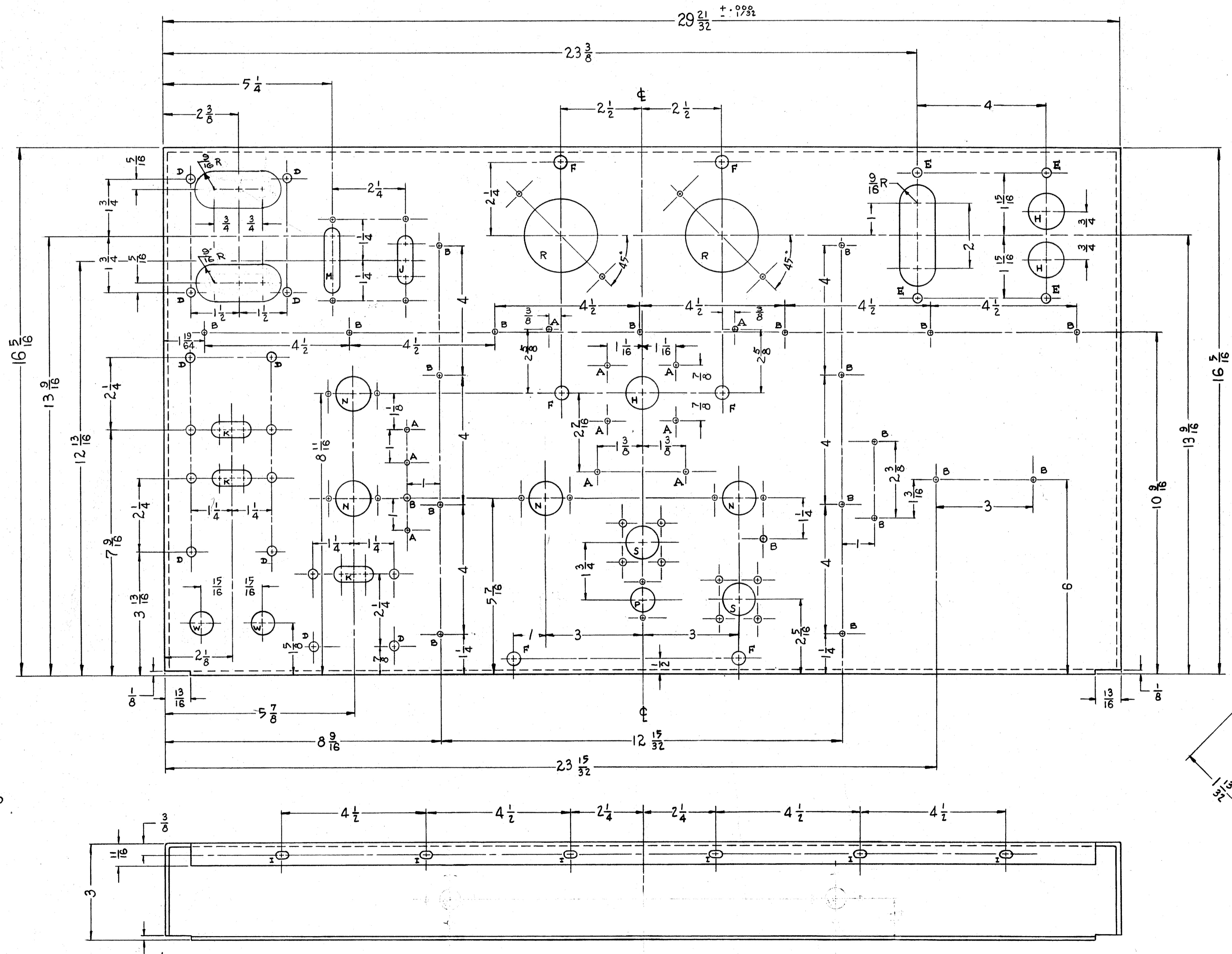
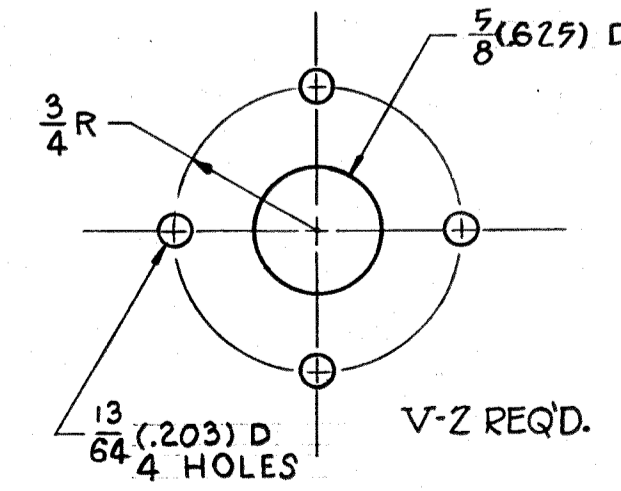
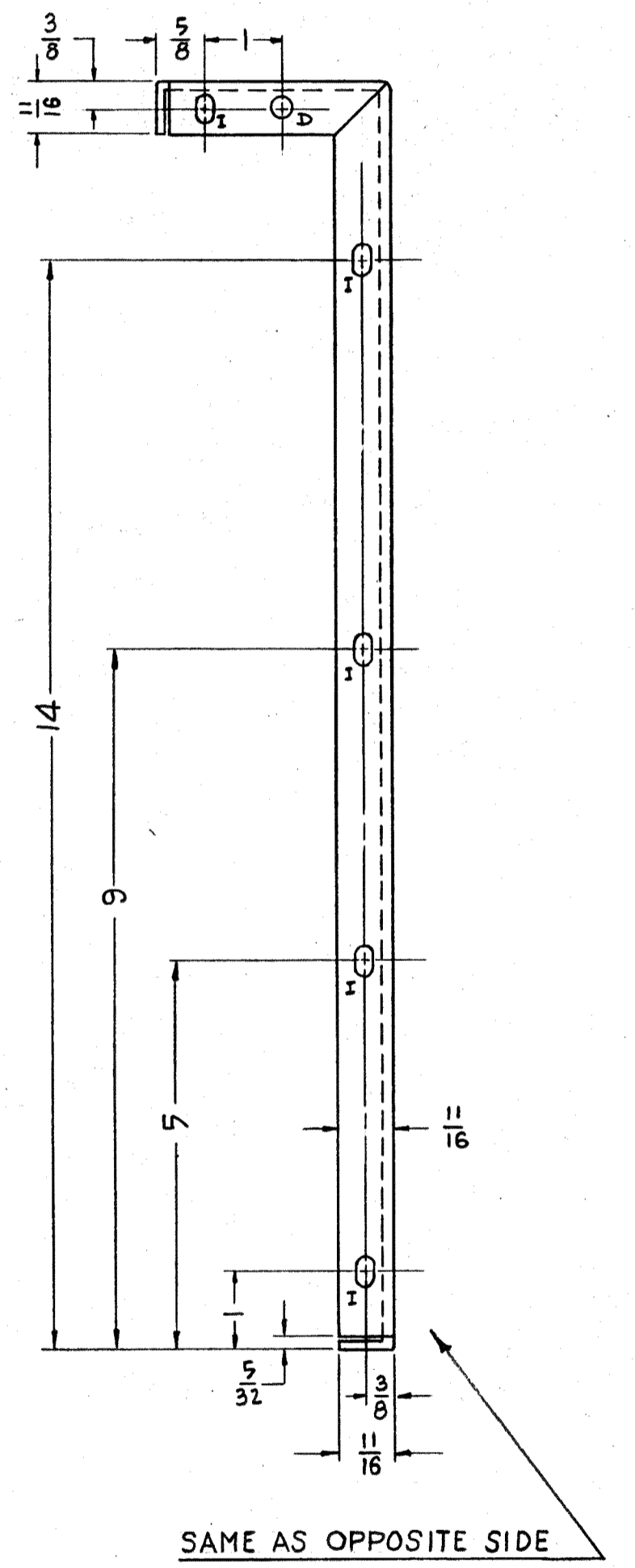
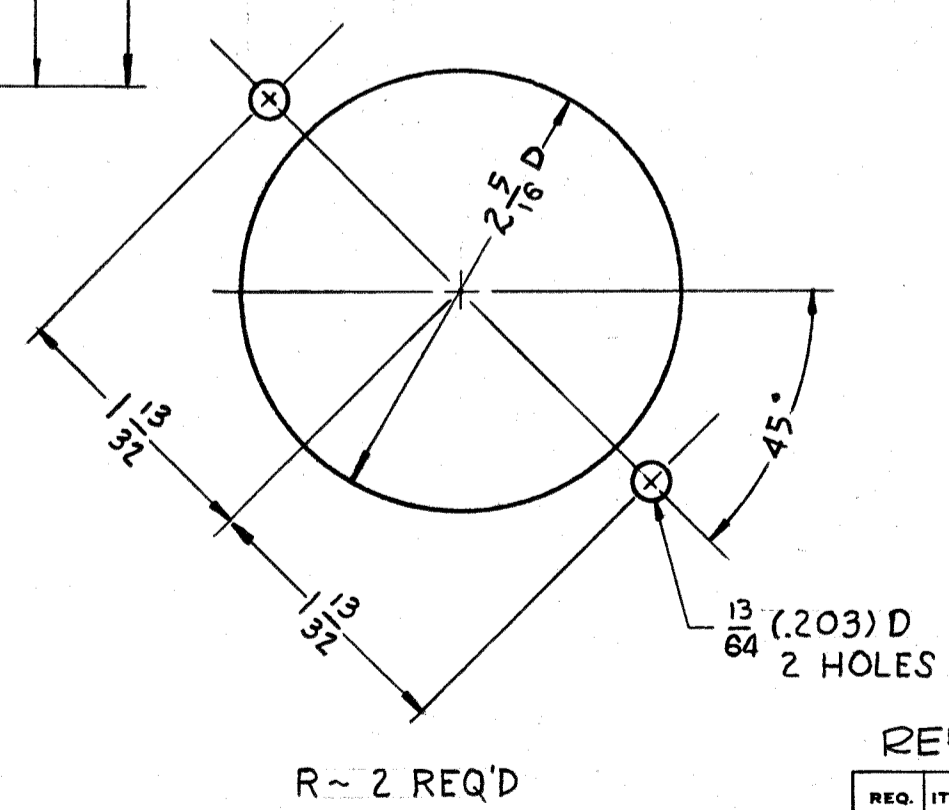
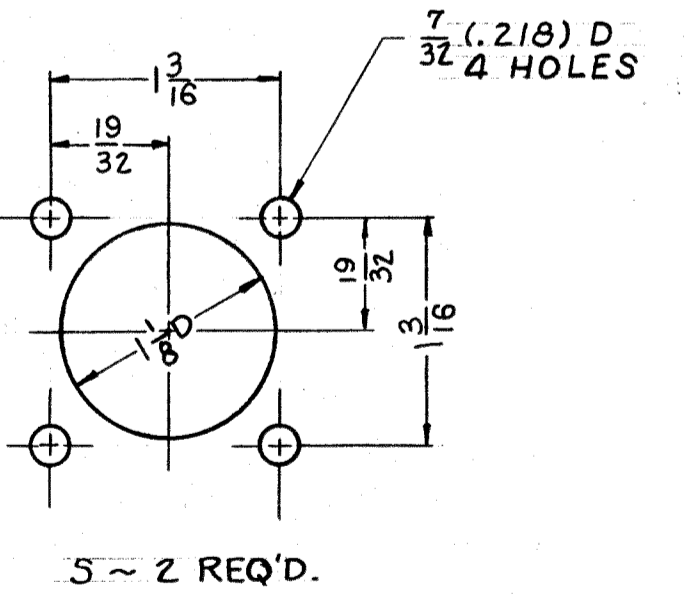
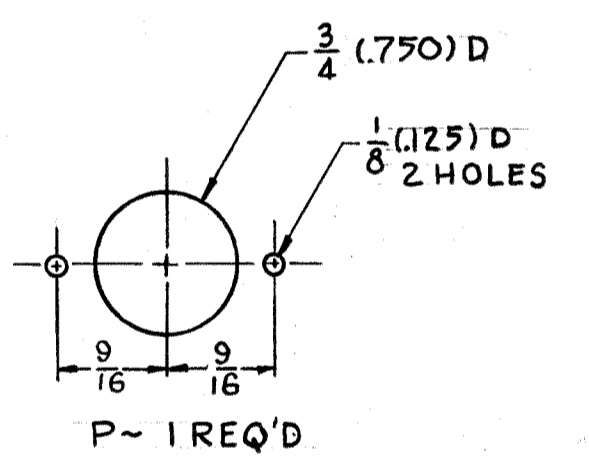
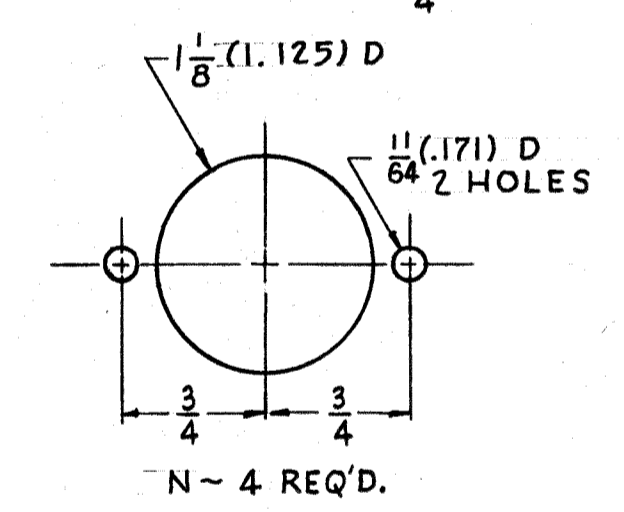
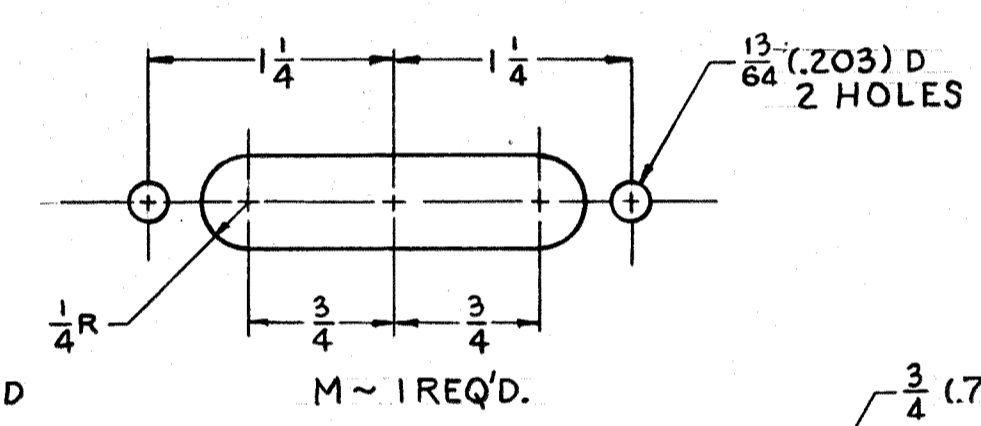
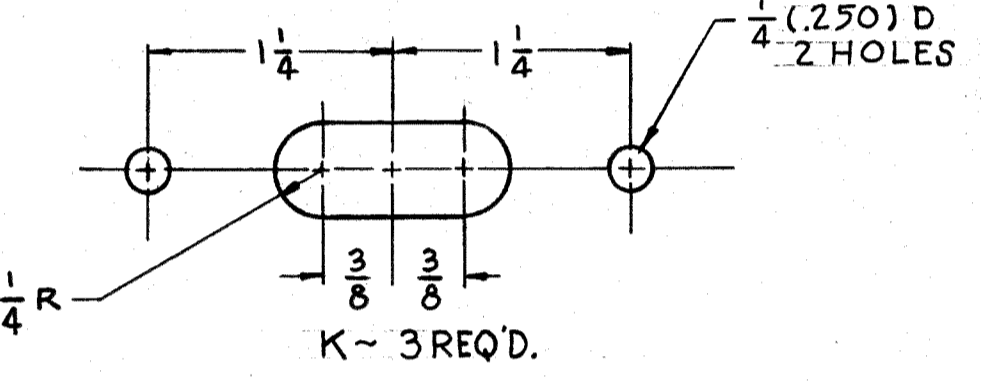
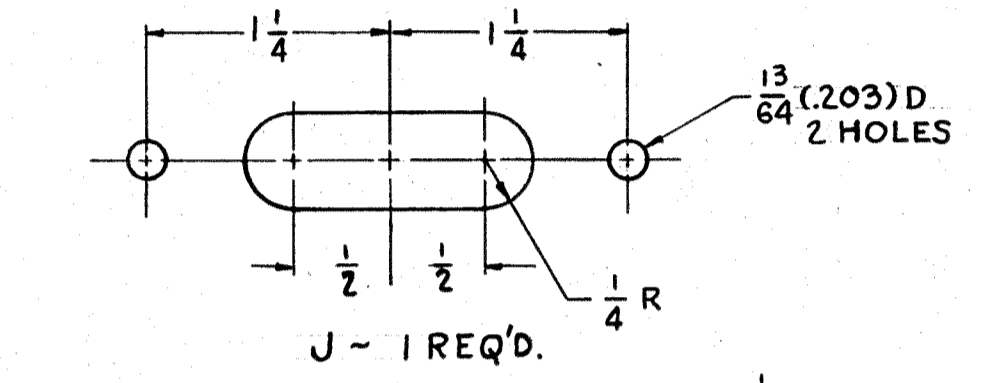
IF IT IS FOUND DESIRABLE TO CHANGE ANY TOLERANCE OR OTHER DETAIL SPECIFIED ON THIS DRAWING NOTIFY THE PURCHASER PROMPTLY.
MAXIMUM ALLOWABLE TOLERANCES HAVE BEEN DETERMINED AND DEVIATIONS WILL BE CAUSE FOR REJECTION.
REMOVE ALL BURRS AND SHARP EDGES



NOTICE TO PERSONS RECEIVING THIS DRAWING
THE TECHNICAL MATERIEL CORPORATION claims proprietary right in the material disclosed herein. This drawing is issued in confidence for engineering information only and may not be reproduced or used to manufacture anything shown hereon without permission from THE TECHNICAL MATERIEL CORPORATION to the user. This drawing is loaned for mutual assistance and is subject to recall at any time.
Property of:
THE TECHNICAL MATERIEL CORPORATION
MAMARONECK, NEW YORK

HOLE LEGEND

Letter	Quantity	Size	Requirement
A	11	(.171) D	HOLES REQ.
B	23	(.203) D	" "
D	12	(.250) D	" "
E	4	(.312) D	" "
F	6	(.375) D	" "
H	3	(1.125) D	" "
I	16	SLOTS	
W	2	HOLES	



NOTE:
HOLES LEFT OUT ON THIS VIEW, ARE SHOWN ON REAR VIEW ABOVE.

ISSUE	ITEM	CHANGED FROM	DATE	BY	CHK'D	ENGR. APP.
D	1	REAR VIEW CLARIFIED	10/18/58	3304		
B	1	NO CHANGE LEGS				
A	1	5/16 WAS 5/16 (ERROR)	1/15/58			
A	1	Two "A" holes Added	1/8/58	517		

TOLERANCES FROM: ALL DEC. DIM. ± .001; FRACTIONAL DIM. ± .004; ANGULAR DIM. ± .02°

SCALE: DRILL, PUNCH, COMMERCIAL STOCK SIZES AND MANUFACTURERS TOLERANCES ARE NOT INCLUDED.

REQ. PER UNIT	MODEL	PROJECT NO.	DATE
1	RTM-2	10-13-58	

REF - TMC DWG - LD-461

REQ. ITEM	PART NO.	DESCRIPTION	SYMBOL
.081		THE TECHNICAL MATERIEL CORP.	
STOCK SIZE		MAMARONECK, NEW YORK	
ALUMINUM		MODULATOR CHASSIS	
MATERIAL	WEIGHT PER PC.		
5052	H-32	J.C. BIELE	RFB
TYPE & TEMPER		DRAWN	ELC. DES. APP.
		HEAT TREAT. SPEC.	MECH. DES. APP.
S-404 YEL. IRIDITE		CHECKED	FINAL APPROVAL
FINISH & SPEC. NO.		MS-1382 D	

MS-1382 D