

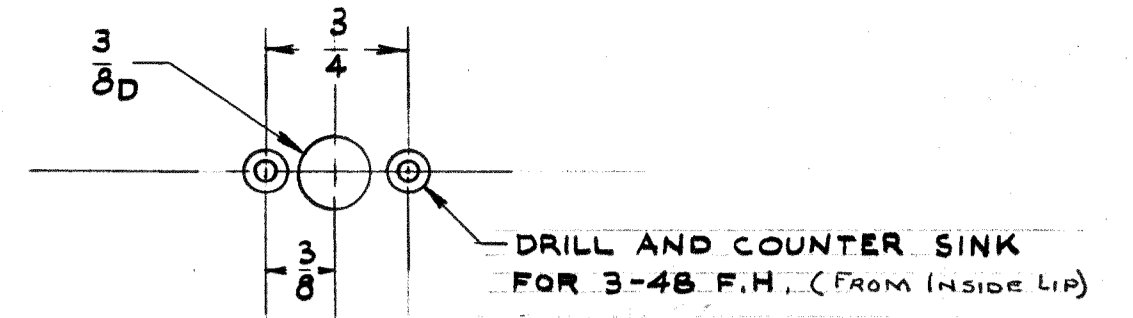
IF IT IS FOUND DESIRABLE TO CHANGE ANY TOLERANCE OR OTHER DETAIL SPECIFIED ON THIS DRAWING NOTIFY THE PURCHASER PROMPTLY.

MAXIMUM ALLOWABLE TOLERANCES HAVE BEEN DETERMINED AND DEVIATIONS WILL BE CAUSE FOR REJECTION. REMOVE ALL BURRS AND SHARP EDGES

NOTICE TO PERSONS RECEIVING THIS DRAWING

THE TECHNICAL MATERIEL CORPORATION claims proprietary right in the material disclosed hereon. This drawing is issued in confidence for engineering information only and may not be reproduced or used to manufacture anything shown hereon without permission from THE TECHNICAL MATERIEL CORPORATION to the user. This drawing is loaned for mutual assistance and is subject to recall at any time.

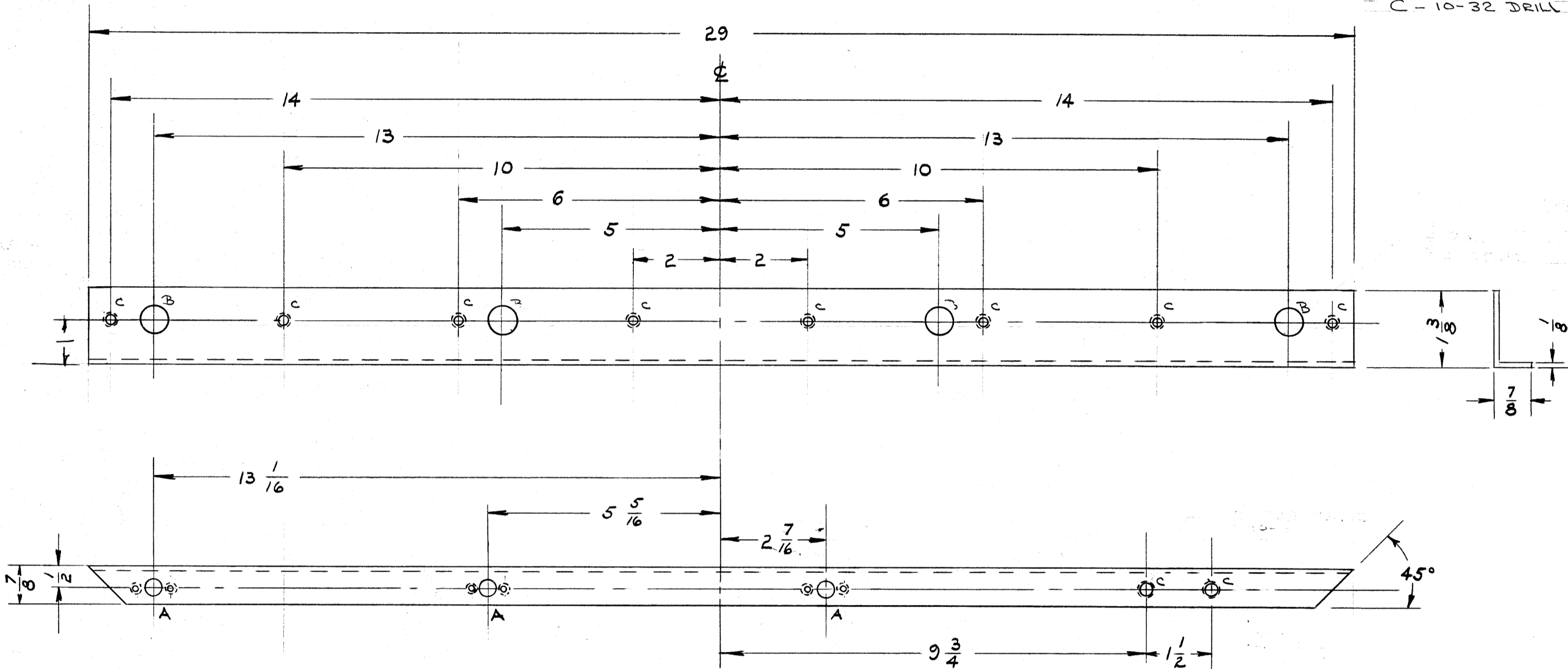
Property of:
THE TECHNICAL MATERIEL CORPORATION
MAMARONECK, NEW YORK



A - 3 REQ

B - 5/8 D - 4 REQ

C - 10-32 DRILL & TAP 10 REQ



MS-1363 C

ISSUE	ITEM	CHANGED FROM	DATE	CN. NO.	DRAFTS	CHECKER	ENG. APP.
C	1	"A" DRILLING WAS OUTSIDE LIP	11/15/58	656	ave	JCB	[Signature]
B	1	1 3/8 DIM WAS 1 3/4	12-2-58		J.C.B.	JCB	[Signature]
A	1	B + c HOLES DIM. ADDED	11/18/58		JCB	JCB	[Signature]

TOLERANCES		SCALE:
ALL OTHERS	DEC. DIM. ± FRAC. DIM. ± 1/64 ANGULAR DIM. ±	DRILL, PUNCH, COMMERCIAL STOCK SIZES AND MANUFACTURERS TOLERANCES ARE NOT INCLUDED.

UNLESS OTHERWISE SPECIFIED DIMENSIONS ARE IN INCHES AND INCLUDE CHEMICALLY APPLIED OR PLATED FINISHES

DECIMALS	FRACTIONS
.X ± .05	± 1/64
.XX ± .01	ANGLES ± 0° 30'
.XXX ± .005	

1	RTP-2			10-6-58
REQ. PER UNIT	MODEL	PROJECT NO.	ASS'Y. NO.	DATE
	USED ON			

REF: MS-1351; MS-1364	
REQ. ITEM	PART NO.
1 3/8 x 7/8 x 1/8	
STOCK SIZE	
STEEL	STIFFENER, FRONT PANEL
MATERIAL	WEIGHT PER PC.
HOT ROLLED	RTP-2
TYPE & TEMPER	CP
HEAT TREAT. SPEC.	S-971 DEGREASE
	S-105 CAD. PLATE
	FINISH & SPEC. NO.
DRAWN	ELEC. DES. APP.
10-16-58	[Signature]
CHECKED	FINAL APPROVAL
	[Signature]
	MS-1363 E