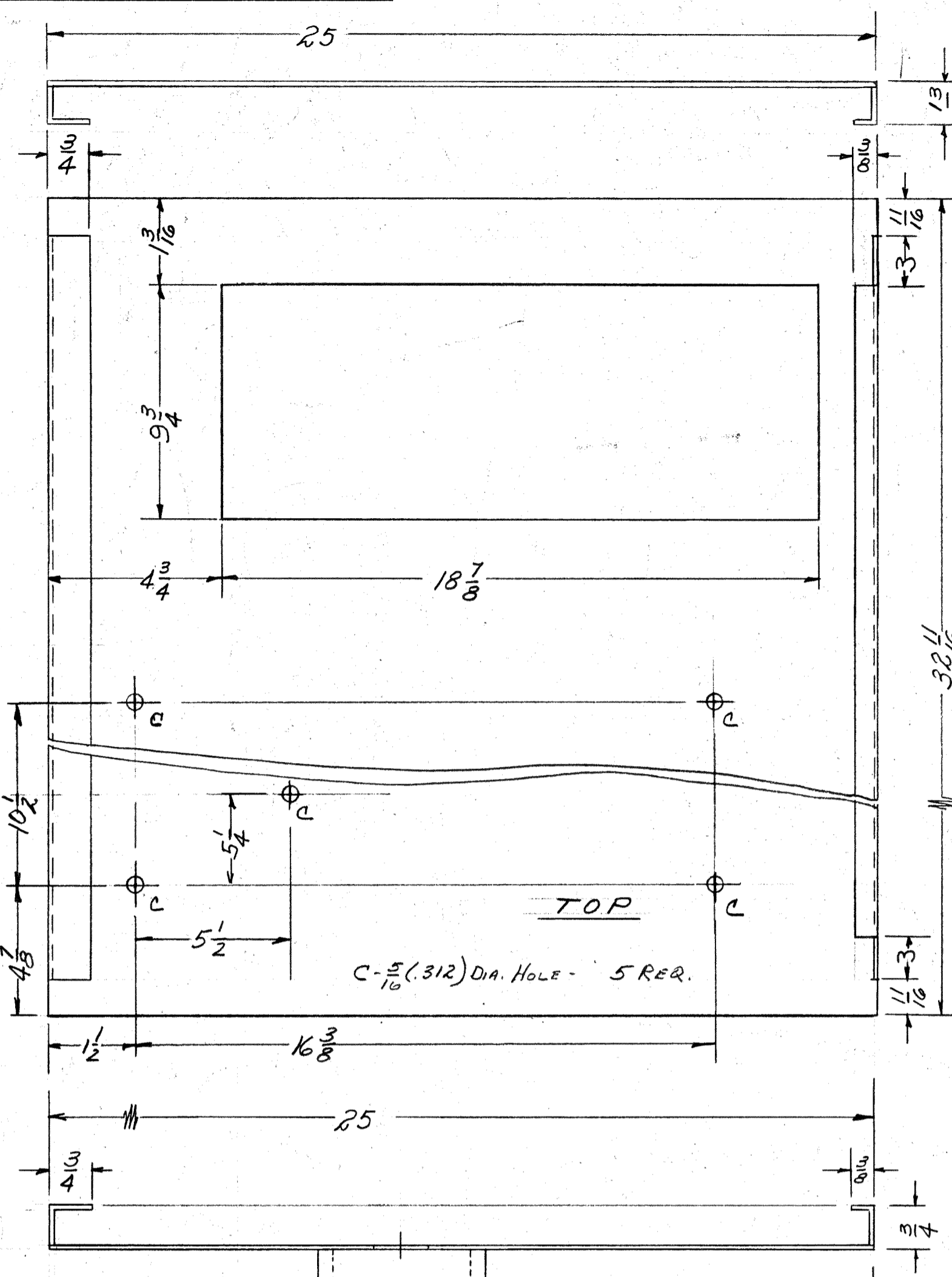
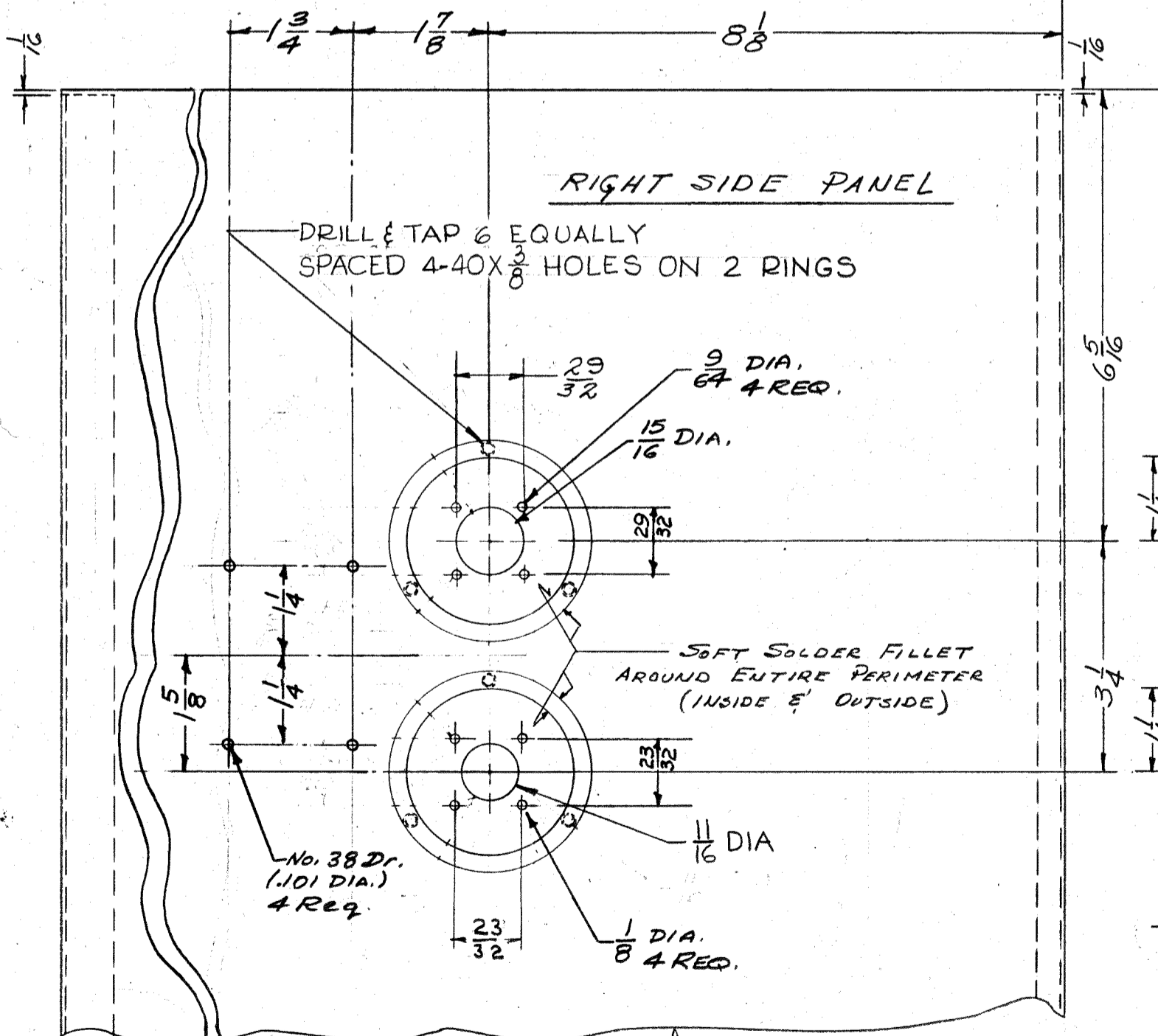
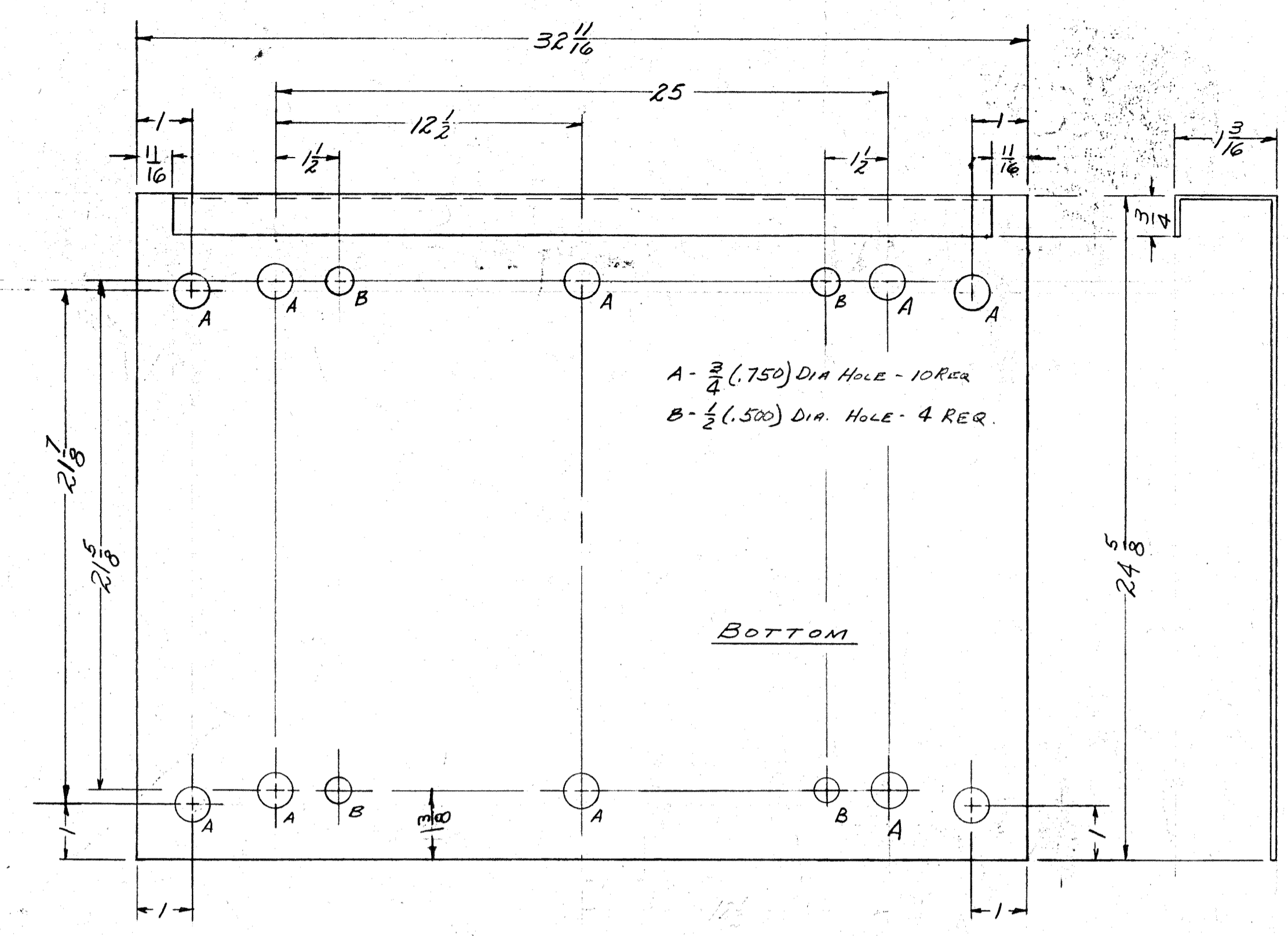
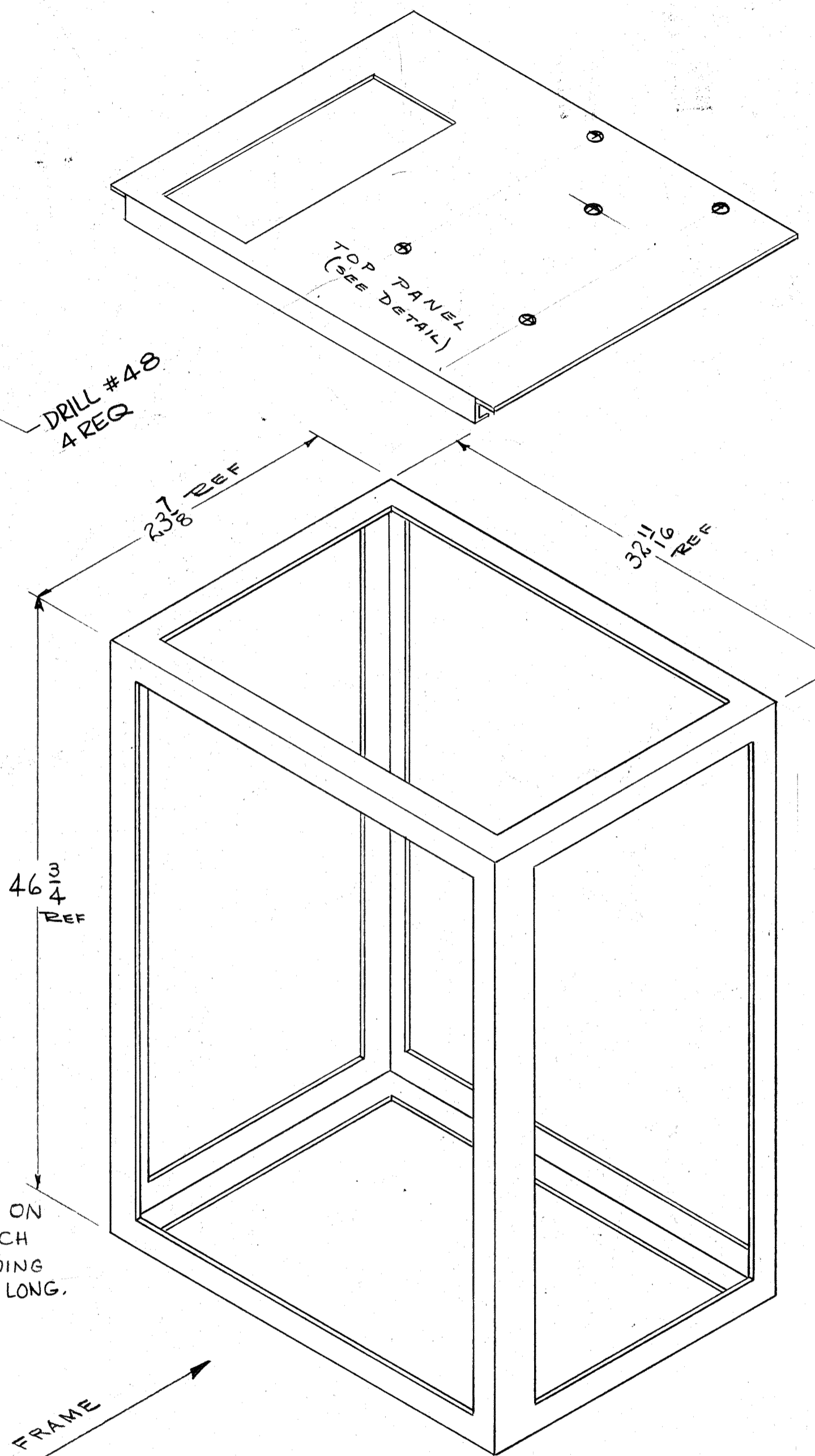
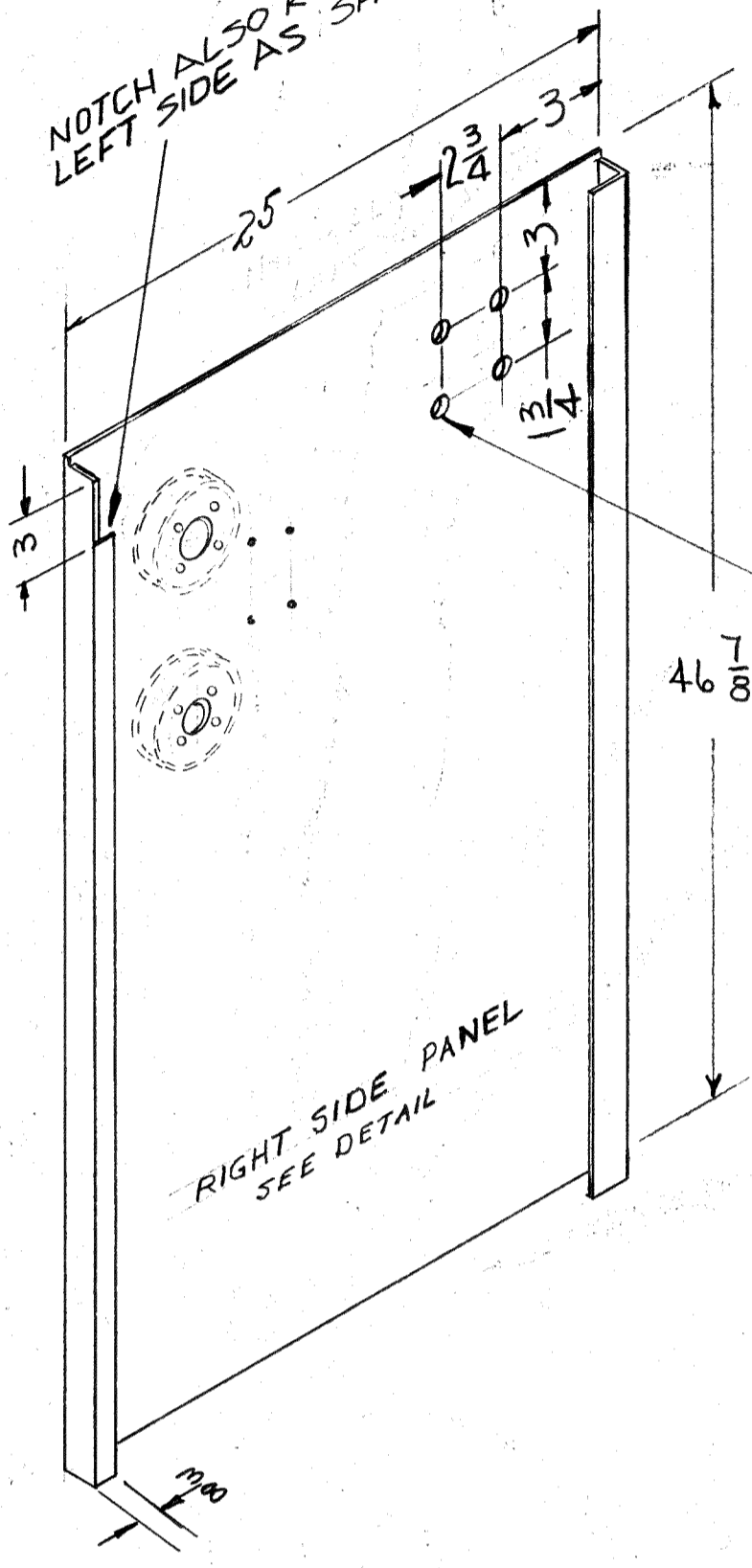


IF IT IS FOUND DESIRABLE TO CHANGE ANY TOLERANCE OR OTHER DETAIL SPECIFIED ON THIS DRAWING NOTIFY THE PURCHASER PROMPTLY.
 MAXIMUM ALLOWABLE TOLERANCES HAVE BEEN DETERMINED AND DEVIATIONS WILL BE CAUSE FOR REJECTION.
 REMOVE ALL BURRS AND SHARP EDGES

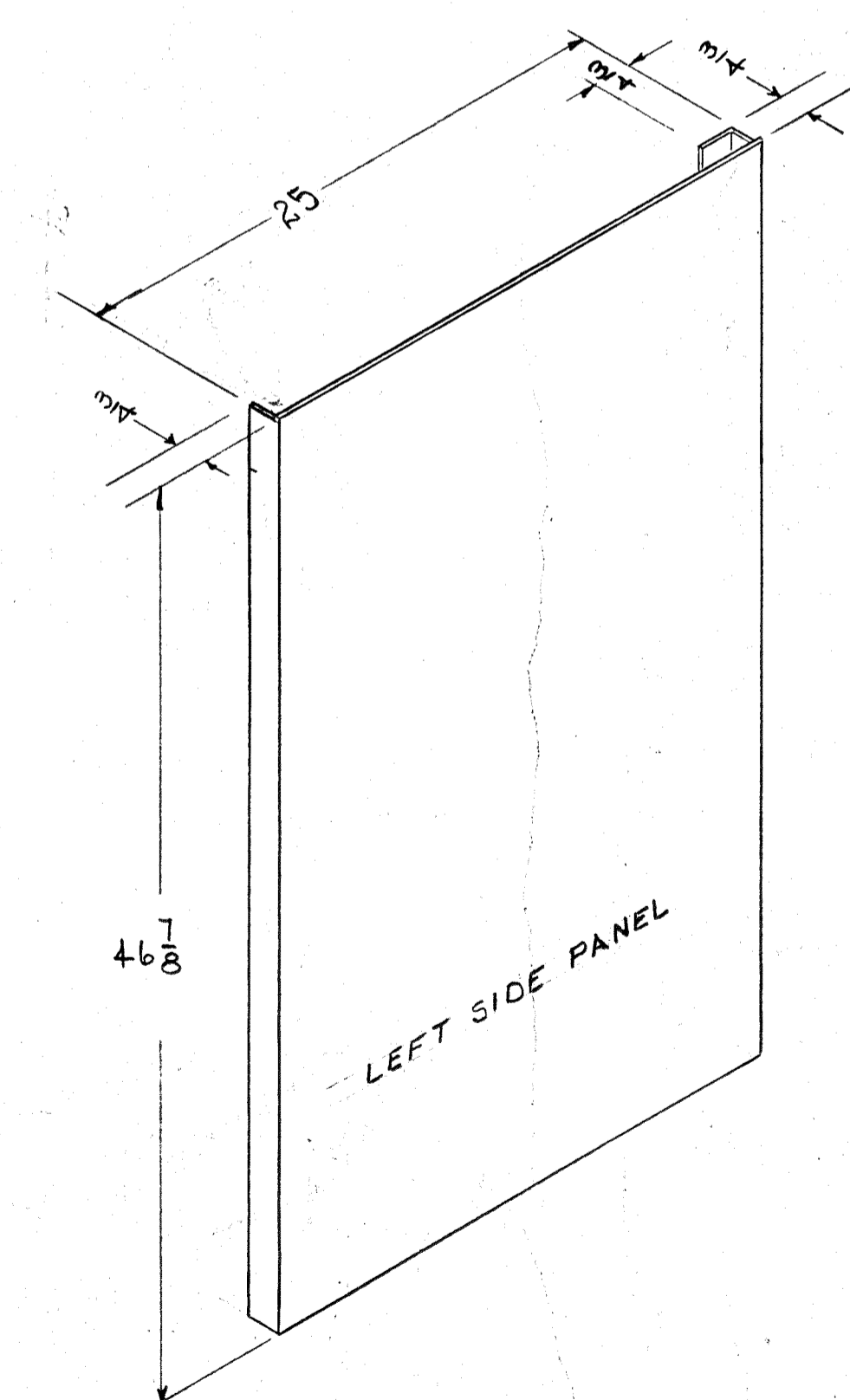


NOTCH ALSO REQ'D ON LEFT SIDE AS SHOWN



DRILL 6 HOLES THRU SKIN .125 DIA ON 2.687 DIA TO MATCH RINGS. USE BINDING HEAD SCREWS 1/4 LONG.

REAR OF FRAME



NOTICE TO PERSONS RECEIVING THIS DRAWING
 THE TECHNICAL MATERIEL CORPORATION claims proprietary right in the material disclosed hereon. This drawing is issued in confidence for engineering information only and may not be reproduced or used to manufacture anything shown hereon without permission from THE TECHNICAL MATERIEL CORPORATION to the user. This drawing is loaned for mutual assistance and is subject to recall at any time.
 Property of:
 THE TECHNICAL MATERIEL CORPORATION
 BAHAMONCK, NEW YORK

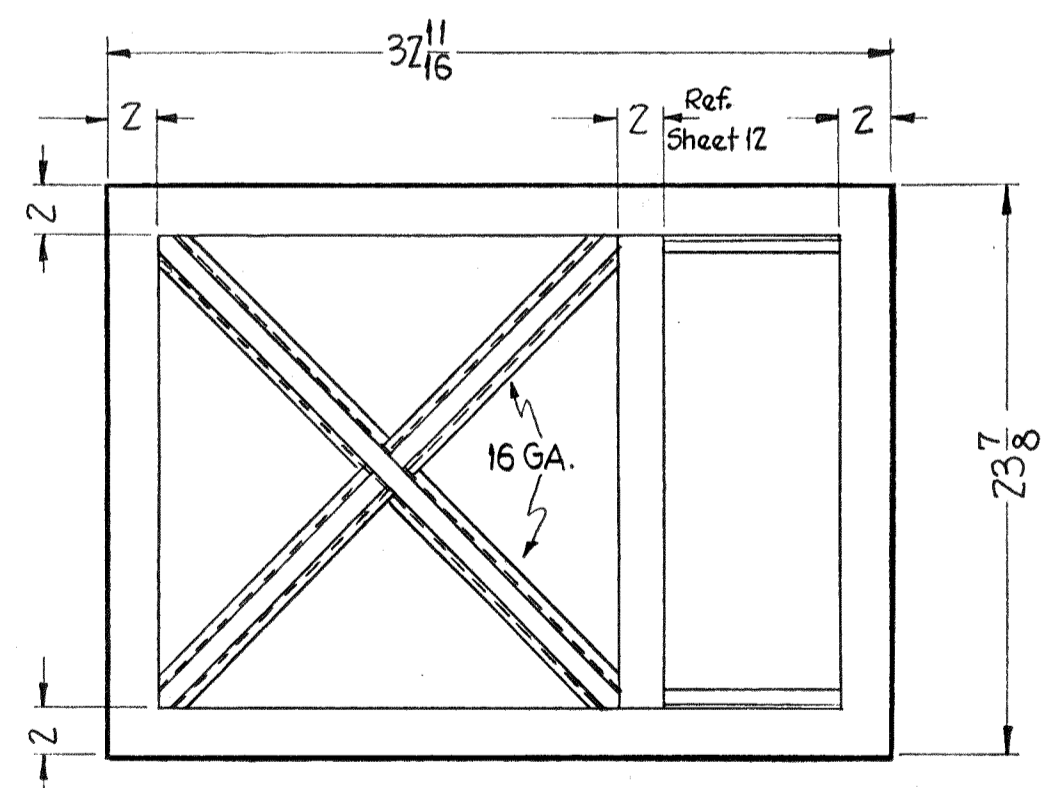
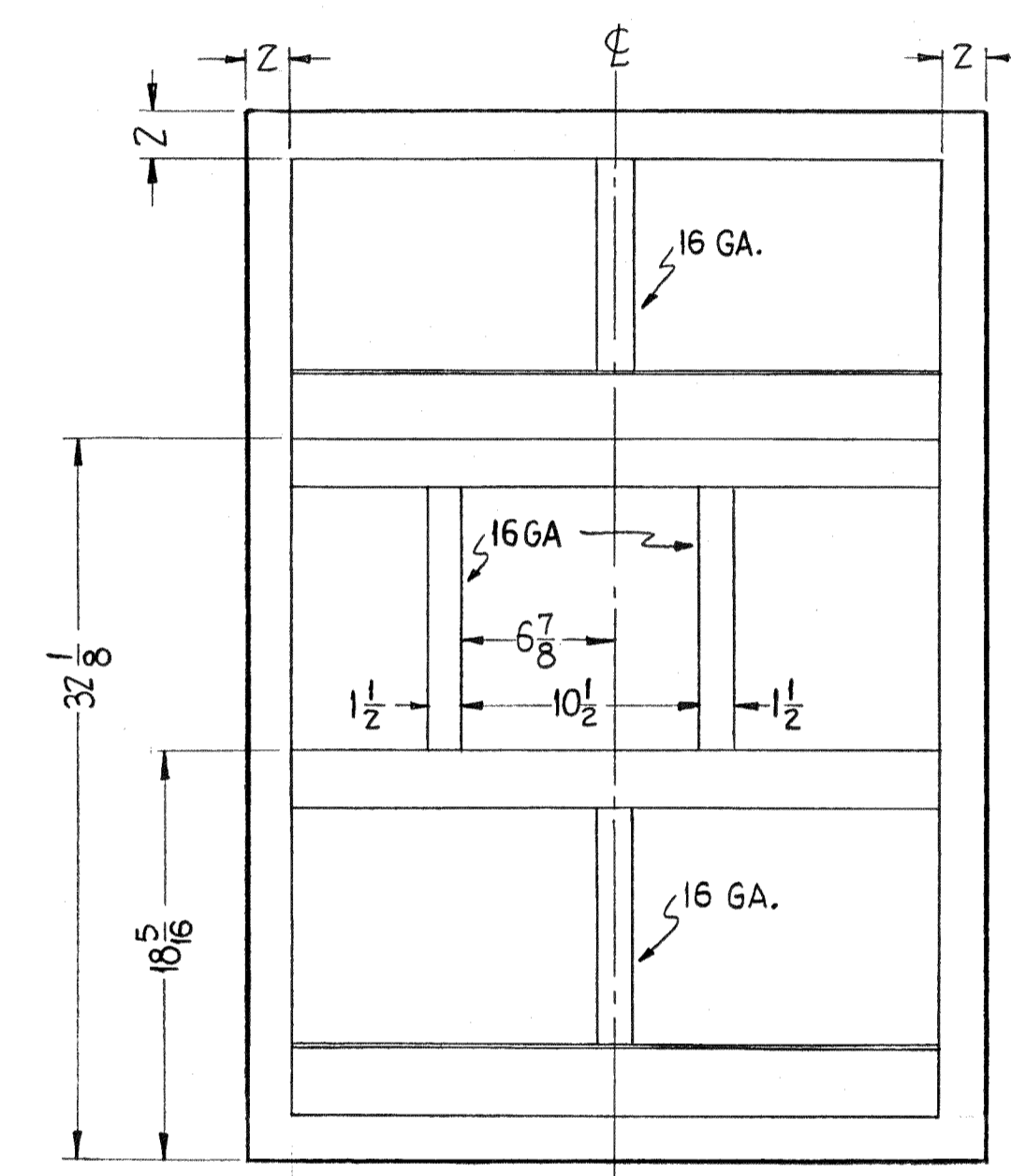
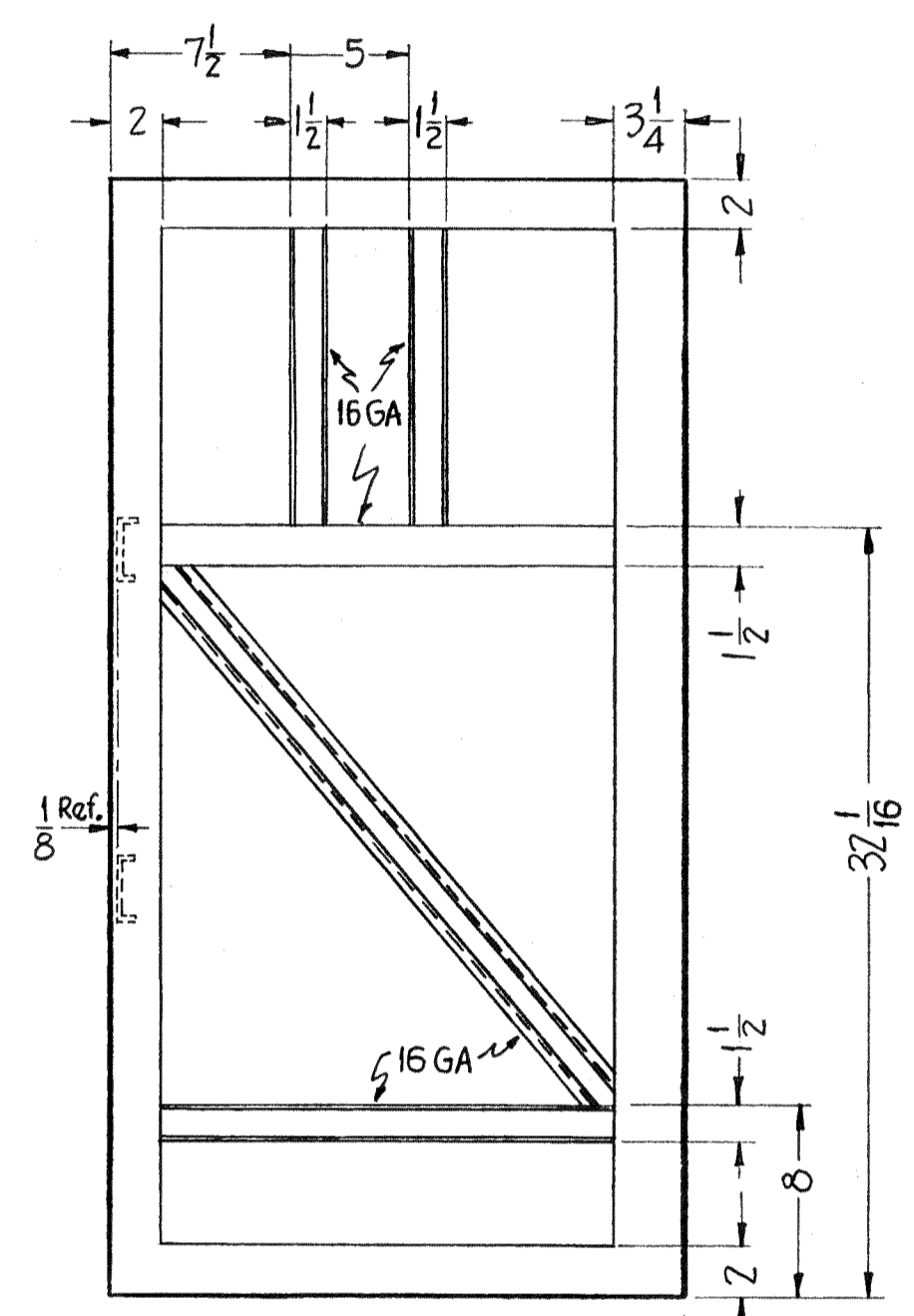
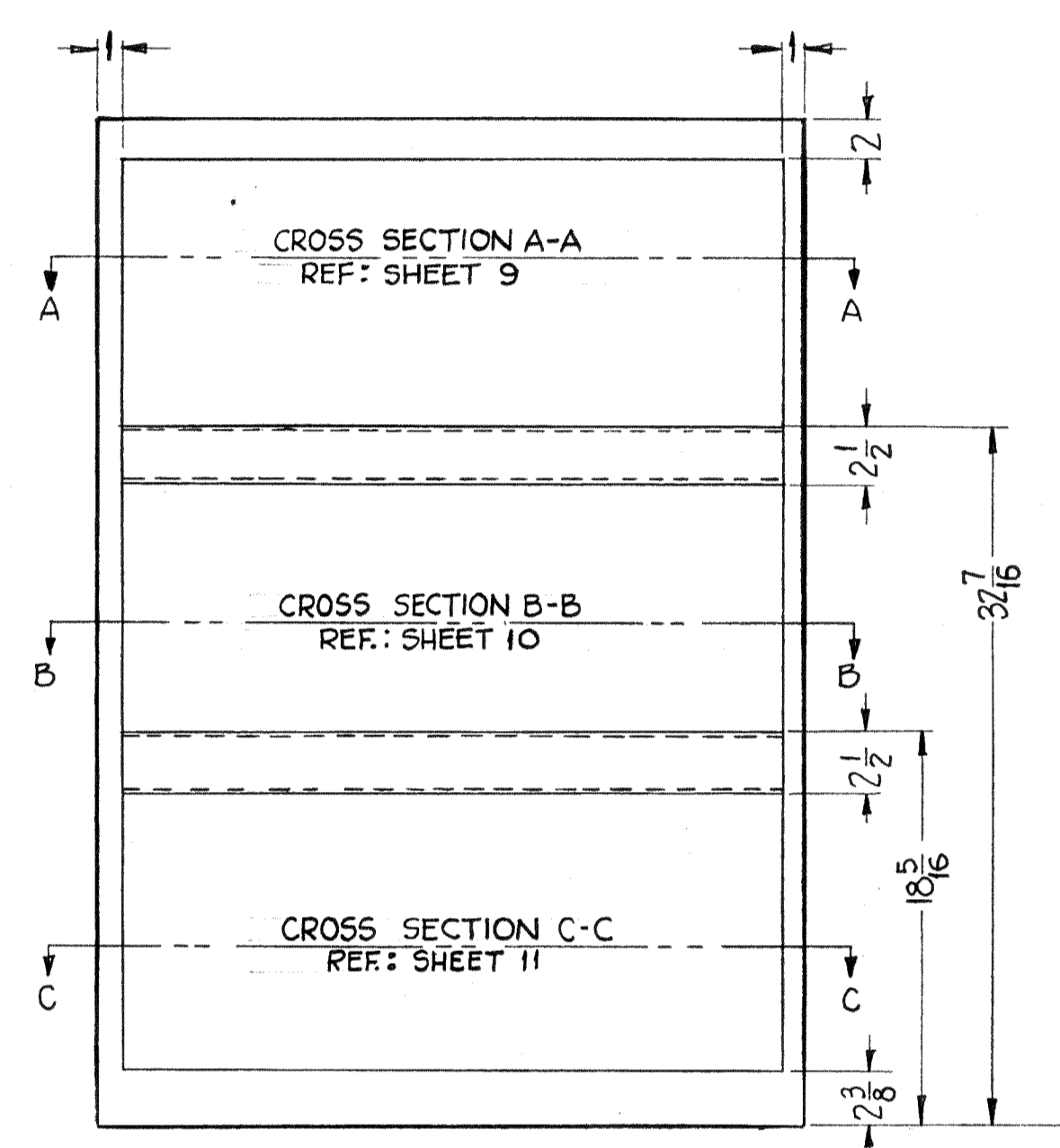
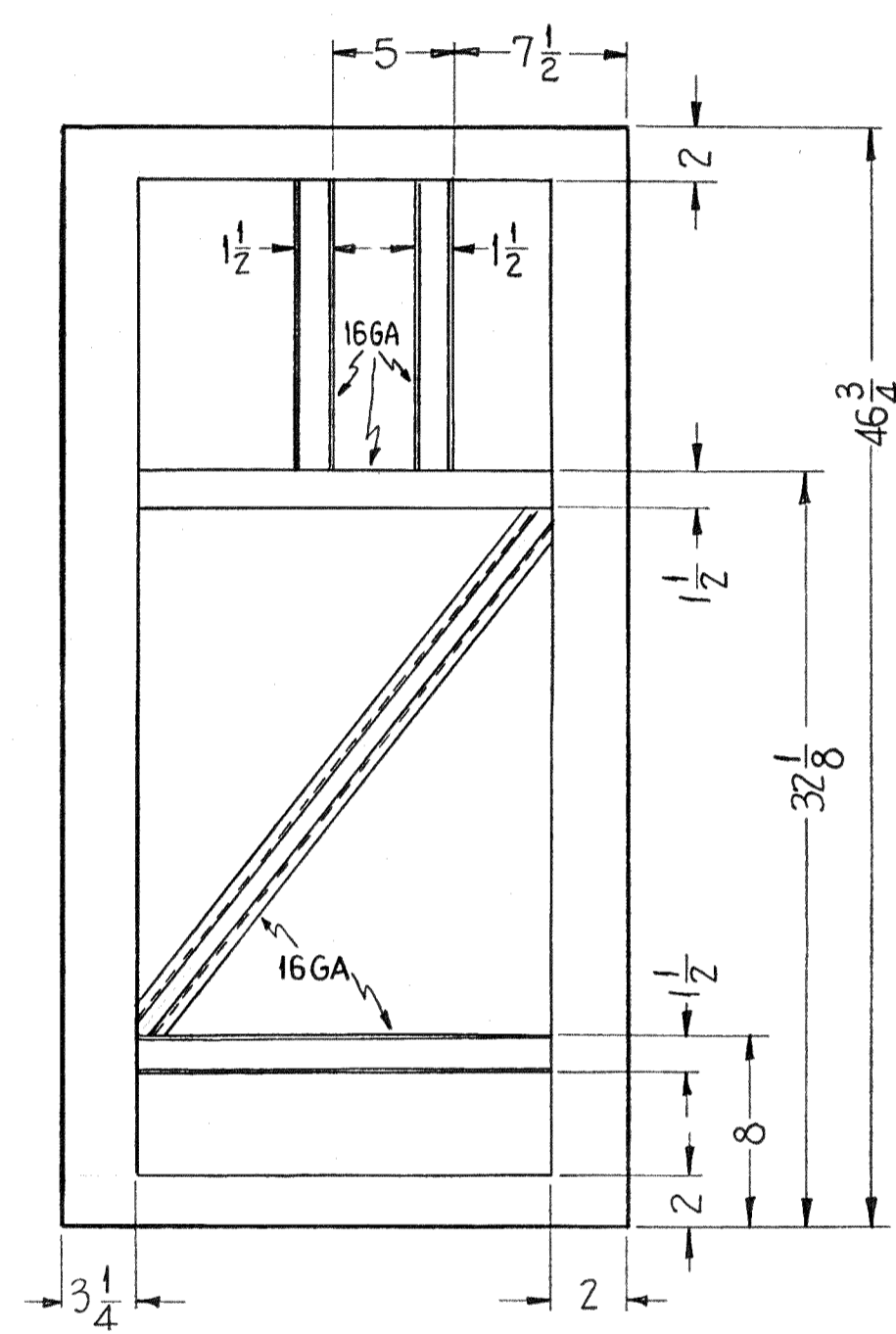
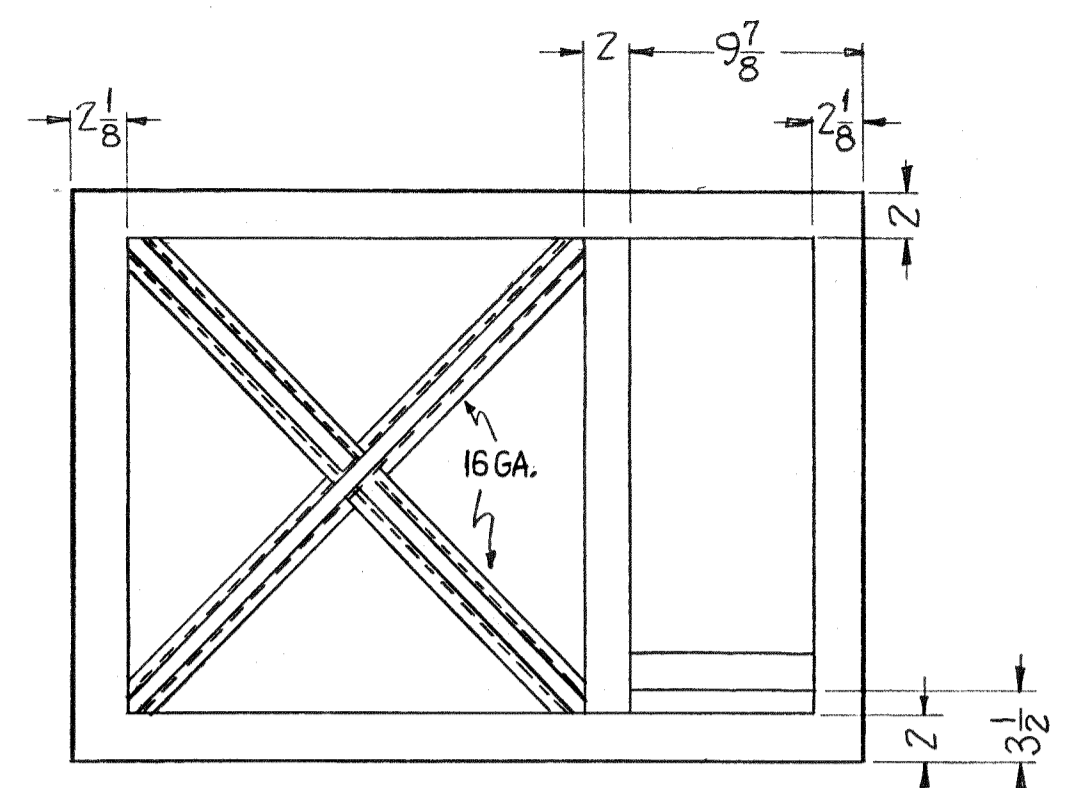
| | | | | | | | |
|--|----------------|---|-----------|--------|-------|------|--|
| C | 1 | SWITCH ADDED | 11/12/58 | 4 | FA | | |
| B | 1 | BOTTOM PLATE DIM. CHANGED | 11/15/58 | | FA | | |
| A | 1 | ADDED 3 C HOLES | 10/4/58 | | KVC | | |
| ISSUE ITEM CHANGED FROM DATE CH. NO. DRAFTER CHECKER ENG. APP. | | | | | | | |
| TOLERANCES SCALE: CVD | | | | | | | |
| ALL | DEC. DIM. ± | DRILL PUNCH COMMERCIAL STOCK SIZES AND MANUFACTURERS TOLERANCES ARE NOT INCLUDED. | | | | | |
| OTHERS | ANGULAR DIM. ± | | SEE S-396 | | | | |
| ISS. ITEM | REVISION | DATE | CH. NO. | DRAFT. | CHKR. | APP. | |
| K | + | SEE SHIT. 7 | 6/22/52 | 20740 | GE | | |
| J | + | 6 4-40 X 3/8 HOLES TAPPED ON RINGS | 3-9-66 | 15803 | WHU | | |
| H | 1 | SEE SHEET 11 OF 12 | 2-15-63 | 8242 | | | |
| G | 1 | Right Side Panel #48 Dr. Holes | 11/16/51 | 5807 | RLM | | |
| F | + | Revision Letter Clarified | 11/16/51 | 4019 | DM | | |
| D | 1 | Four No. 38 Drill Holes Added to Right Side Panel | 11/14/51 | 586 | 16 | | |

| | | | |
|--------------|-------|-------------|----------|
| 1 | CAB-7 | PROJECT NO. | 10-10-58 |
| REQ PER UNIT | MODEL | ASBY. NO. | DATE |
| USED ON | | | |

| | | | |
|-------------------------|----------------|---|----------------|
| REQ. ITEM | PART NO. | DESCRIPTION | SYMBOL |
| SEE S-396 | | THE TECHNICAL MATERIEL CORP. MAMARONECK, NEW YORK | |
| CABINET | | | |
| MATERIAL | WEIGHT PER PC. | | |
| TYPE & TEMPER | 11-0-58 | DRW | RFB |
| HEAT TREAT. SPEC. | NO | CHECKED | FINAL APPROVED |
| FINISH & SPEC. NO. | SEE S-396 | | |
| SHEET 1 OF 12 MS-1360 K | | | |

MS-1360 K

NOTE TO PERSONS RECEIVING THIS DRAWING
 THE TECHNICAL MATERIEL CORPORATION claims proprietary right in the material disclosed hereon. This drawing is issued in confidence for engineering information only and may not be reproduced or used to manufacture anything shown hereon without permission from THE TECHNICAL MATERIEL CORPORATION to the user. This drawing is loaned for mutual assistance and is subject to recall at any time.
 Property of:
 THE TECHNICAL MATERIEL CORPORATION
 MAMARONECK, NEW YORK



MS-1360
 K

| K | SEE SHT. 7 | 6-22-61 | 20740 | GE | 1 | 1 | |
|-----|--------------------------------------|-------------|-------|---------|--------|---------|-----------|
| J | SEE SHEET 1 OF 12 | 3-9-66 | 15893 | WV | 1 | 1 | |
| H | SEE SHEET 11 OF 12 | 2-15-63 | 8242 | WV | 1 | 1 | |
| G | SEE SHEETS 12 & 1 | 11-16-61 | 5807 | ZU | 1 | 1 | |
| F | Revision Letter Clarified | 1-31-61 | 4019 | DM | 1 | 1 | |
| A | Redrawn from Roll Size (NO REVISION) | 1-26-61 | | DM | 1 | 1 | |
| SYM | ZONE | DESCRIPTION | DATE | CH. NO. | DRAFTS | CHECKER | ENG. APP. |

UNLESS OTHERWISE SPECIFIED:
 DIMENSIONS ARE IN INCHES
 TOLERANCES ON
 FRACTIONS ± 1/64 DECIMALS ± .005 ANGLES ± 1/2°

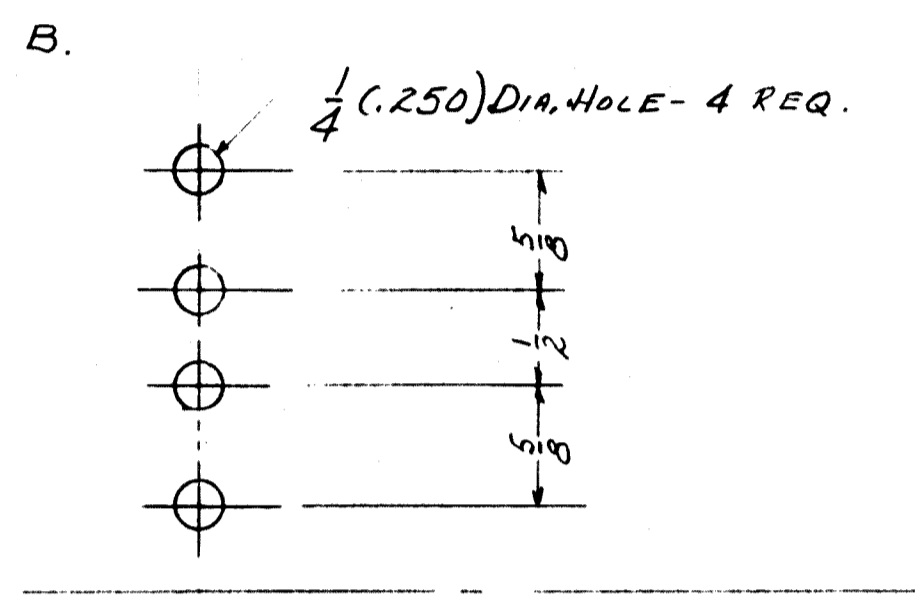
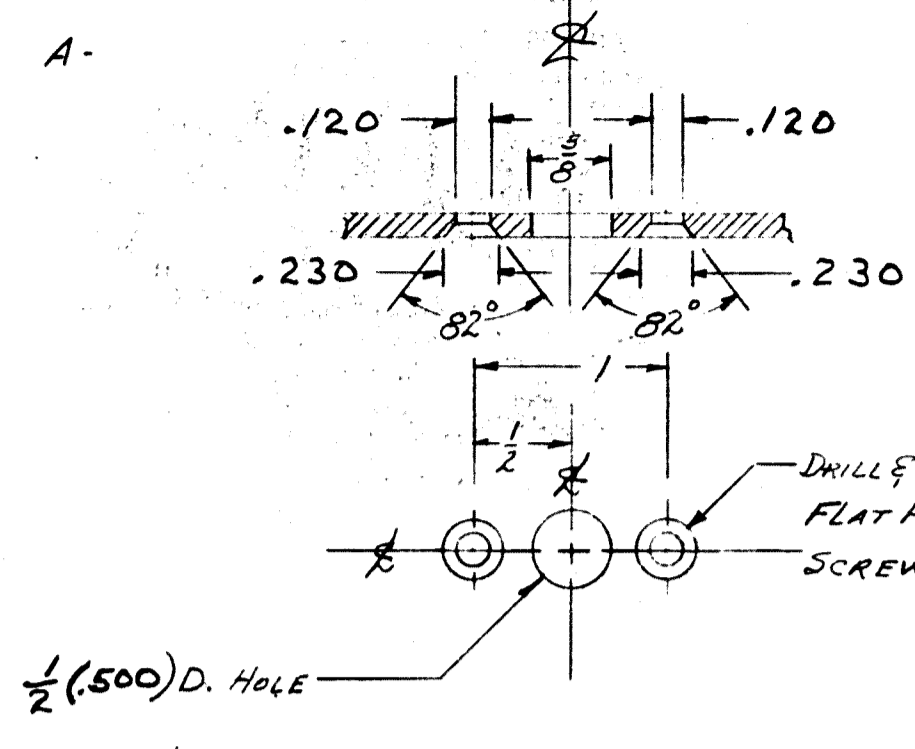
SCALE
 MAXIMUM ALLOWABLE TOLERANCES HAVE BEEN DETERMINED AND ANY DEVIATIONS WILL BE CAUSE FOR REJECTION. REMOVE ALL BURRS & SHARP EDGES

| | | | | | |
|---|-------|---------|------------|------|---------|
| REQ. PER UNIT | CAB-7 | SECTION | ASS'Y. NO. | DATE | 1-26-61 |
| USED ON | | | | | |
| FINISH & SPEC. NO. | | | | | |
| ELEC. DES. APP. MECH. DES. APP. SHEET 2 OF 12 | | | | | |

| REQ. ITEM | PART NO. | DESCRIPTION | SYMBOL |
|------------------------------------|----------|-------------|--------|
| STOCK SIZE | | | |
| MATERIAL | | | |
| TYPE & TEMPER HEAT TREAT. SPEC. | | | |
| FINISH & SPEC. NO. | | | |

THE TECHNICAL MATERIEL CORP.
 MAMARONECK, NEW YORK
 FRAME, PICTORIAL MODEL CAB-7
 DRAWN: [Signature] CHECKED: [Signature] FINAL APPROVAL: [Signature]
 MS-1360
 K

IF IT IS FOUND NECESSARY TO CHANGE ANY TOLERANCE OR OTHER DETAIL SPECIFIED ON THIS DRAWING NOTIFY THE PURCHASER PROMPTLY.
 MAXIMUM ALLOWABLE TOLERANCES HAVE BEEN DETERMINED AND DEVIATIONS WILL BE CAUSE FOR REJECTION.
 REMOVE ALL BURRS AND SHARP EDGES

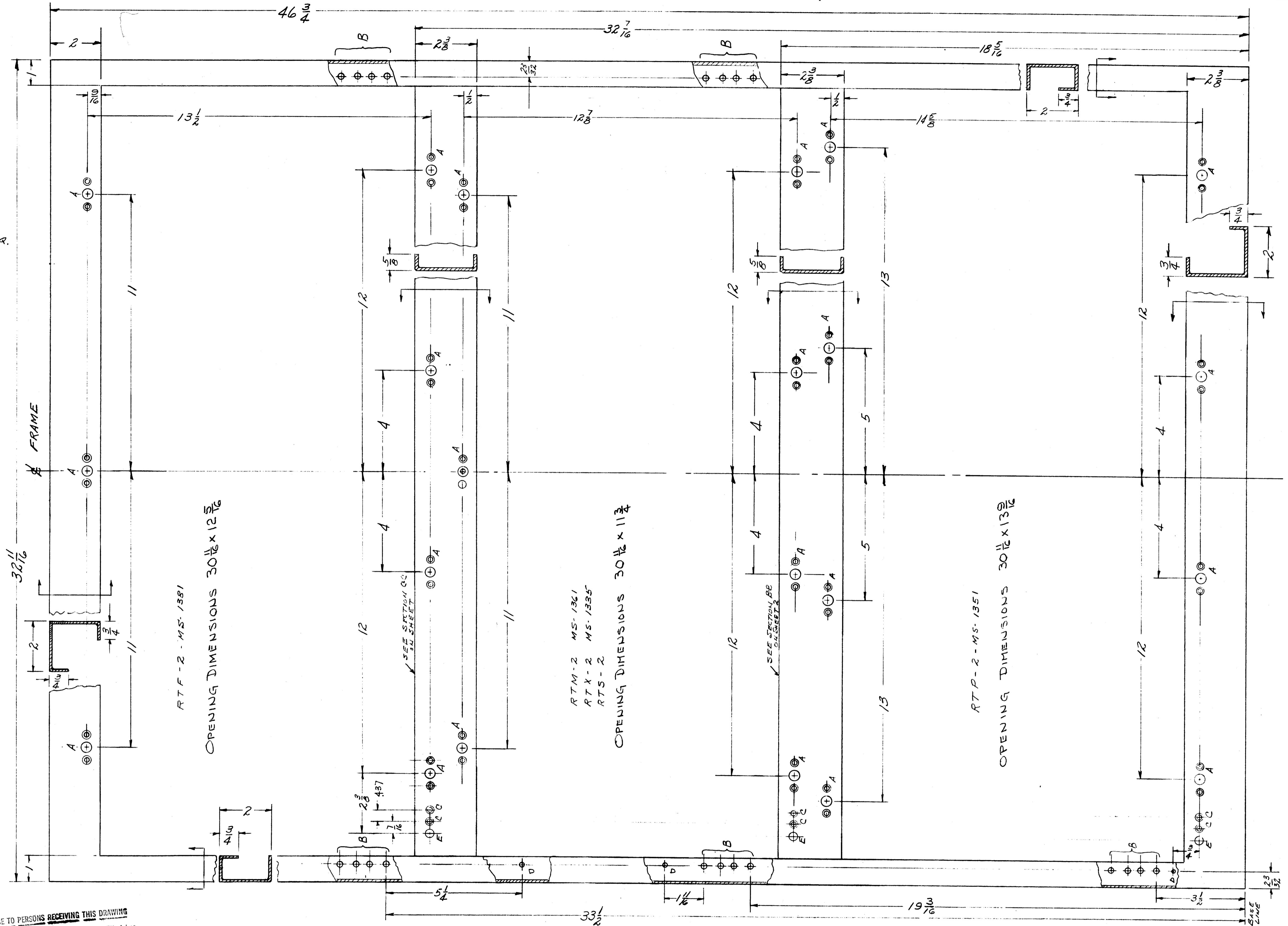


- E - 3/16 (.375) DIA. HOLE 3 REQ.
- D - 1/4 (.171) DIA. HOLE 3 REQ.
- C - DRILL & SINK FOR 6-32 FLATHEAD SCREW 6 REQ.

| REV | ITEM | CHANGED FROM | DATE | EN. NO. | DRAFTS | CHECKER | ENG. APP. |
|-----|------|---|---------|---------|--------|---------|-----------|
| K | | SEE SHT 7 | 6/22/42 | 20710 | GE | | |
| J | | SEE SHEET 1 OF 12 | 3/9/44 | 15893 | WU | | |
| H | | SEE SHEET 11 OF 12 | 2/15/43 | 8242 | | | |
| G | | See Sheet 12 of 12 | 11/6/41 | 5807 | KU | | |
| F | | Revision Letter Clarified | 1/31/61 | 4019 | | | |
| E | 2 | "HOLE WAS 5/16" | 1/1/58 | | | | |
| E | 1 | "HOLE WAS 19/32" | | | | | |
| D | | 4-40 SINK DETAIL WAS 6-32 | 1/1/58 | 616 | | | |
| C | | 4-40 SINK DETAIL WAS 6-32 | 1/1/58 | 587 | | | |
| B | | 1/4 (.250) DIA. HOLE WAS 5/16 (.3125) DIA. HOLE | 1/1/58 | 572 | | | |
| A | | 1/2 (.500) DIA. HOLE WAS 3/4 (.750) DIA. HOLE | 1/1/58 | 558 | | | |

NOTICE TO PERSONS RECEIVING THIS DRAWING
 THE TECHNICAL MATERIEL CORPORATION claims proprietary right in the material disclosed hereon. This drawing is issued in confidence for engineering information only and may not be reproduced or used to manufacture anything shown hereon without permission from THE TECHNICAL MATERIEL CORPORATION to the user. This drawing is loaned for mutual assistance and is subject to recall at any time.
 Property of:
 THE TECHNICAL MATERIEL CORPORATION
 MAMARONECK, NEW YORK

NOTE: MATERIAL 12GA (1046) MILD STEEL UNLESS NOTED OTHERWISE.



| REQ. ITEM | PART NO. | DESCRIPTION | SYMBOL |
|--------------------|----------|---|--------|
| 1 | CAB-7 | THE TECHNICAL MATERIEL CORP. MAMARONECK, NEW YORK | |
| SEE S-396 | | CABINET | |
| STOCK SIZE | | FRONT VIEW | |
| MATERIAL | | 10-8-58 | |
| TYPE & TEMPER | | MECH. DES. APP. RFB | |
| HEAT TREAT. SPEC. | | DRAWN | |
| FINISH & SPEC. NO. | | CHECKED | |
| SHEET 3 OF 12 | | FINAL APPROVAL | |

| REQ. PER UNIT | MODEL | PROJECT NO. | ASSY. NO. | DATE |
|---------------|-------|-------------|-----------|----------|
| 1 | CAB-7 | | | 10-11-58 |

MS-1360 K

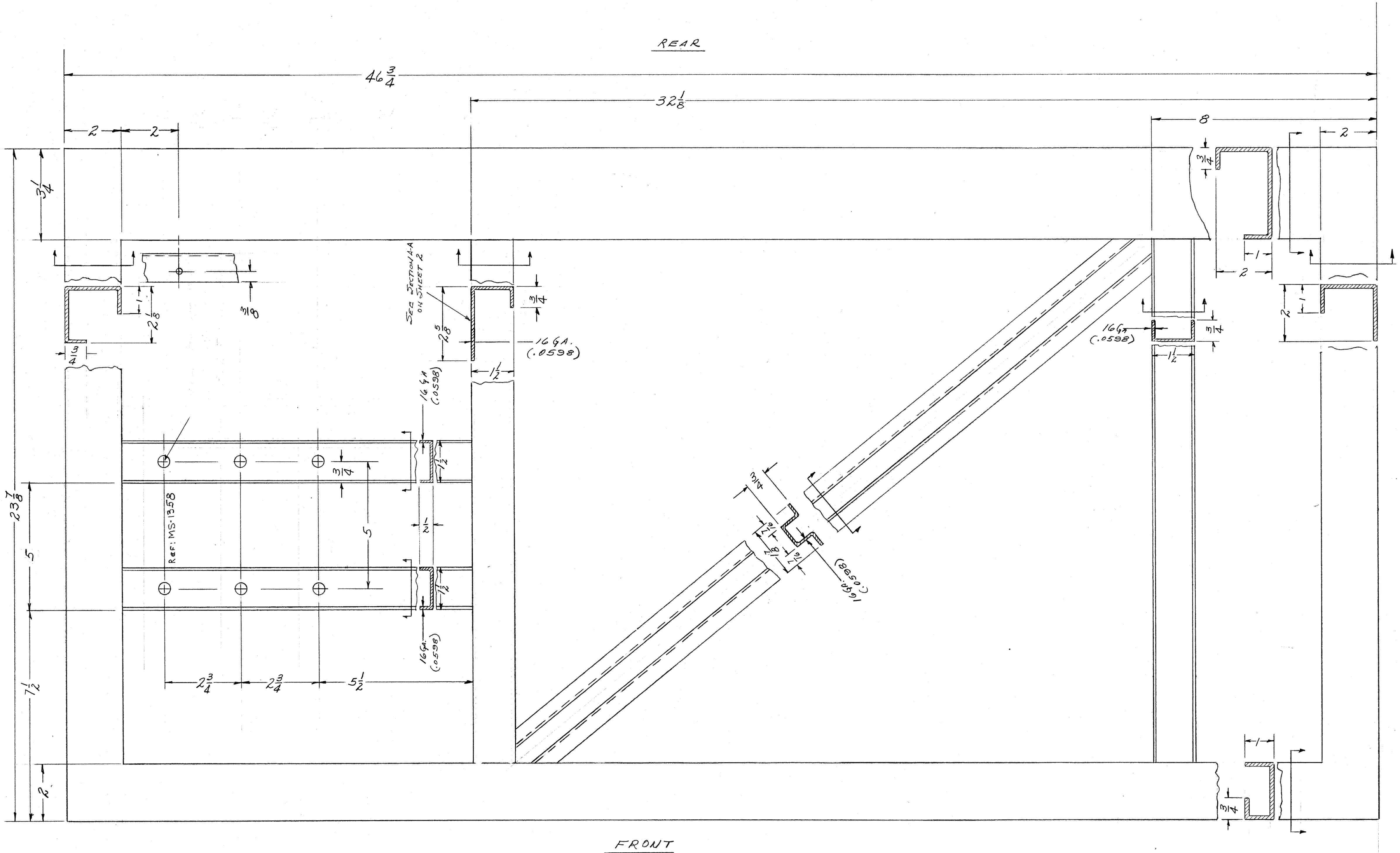
IF IT IS FOUND DESIRABLE TO CHANGE ANY TOLERANCE OR OTHER DETAIL SPECIFIED ON THIS DRAWING NOTIFY THE PURCHASER PROMPTLY.
 MAXIMUM ALLOWABLE TOLERANCES HAVE BEEN DETERMINED AND DEVIATIONS WILL BE CAUSE FOR REJECTION. REMOVE ALL BURRS AND SHARP EDGES.

NOTICE TO PERSONS RECEIVING THIS DRAWING

THE TECHNICAL MATERIEL CORPORATION claims proprietary right in the materiel disclosed herein. This drawing is issued in confidence for engineering information only and may not be reproduced or used to manufacture anything shown herein without permission from THE TECHNICAL MATERIEL CORPORATION to the user. This drawing is loaned for mutual assistance and is subject to recall at any time.

Property of:
 THE TECHNICAL MATERIEL CORPORATION
 MAMARONECK, NEW YORK

A- $\frac{3}{16}$ (.187) DIA. HOLE 1 Req.



NOTE:
 ALL MEMBERS 12 GA. (.105) UNLESS NOTED OTHERWISE.

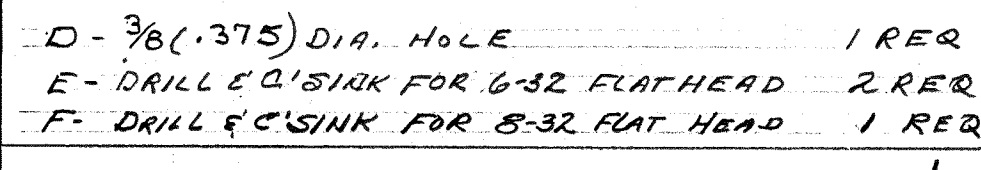
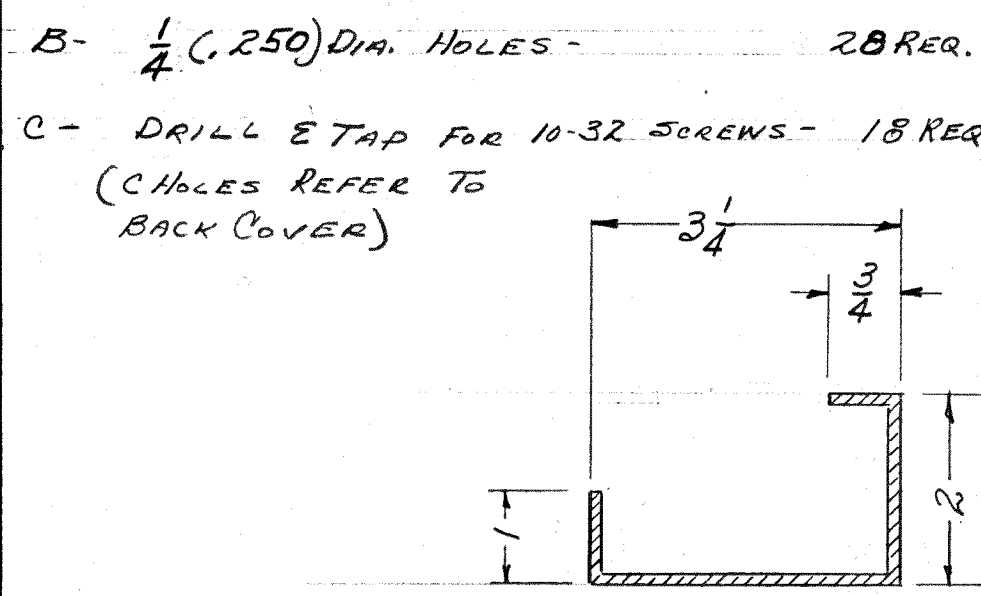
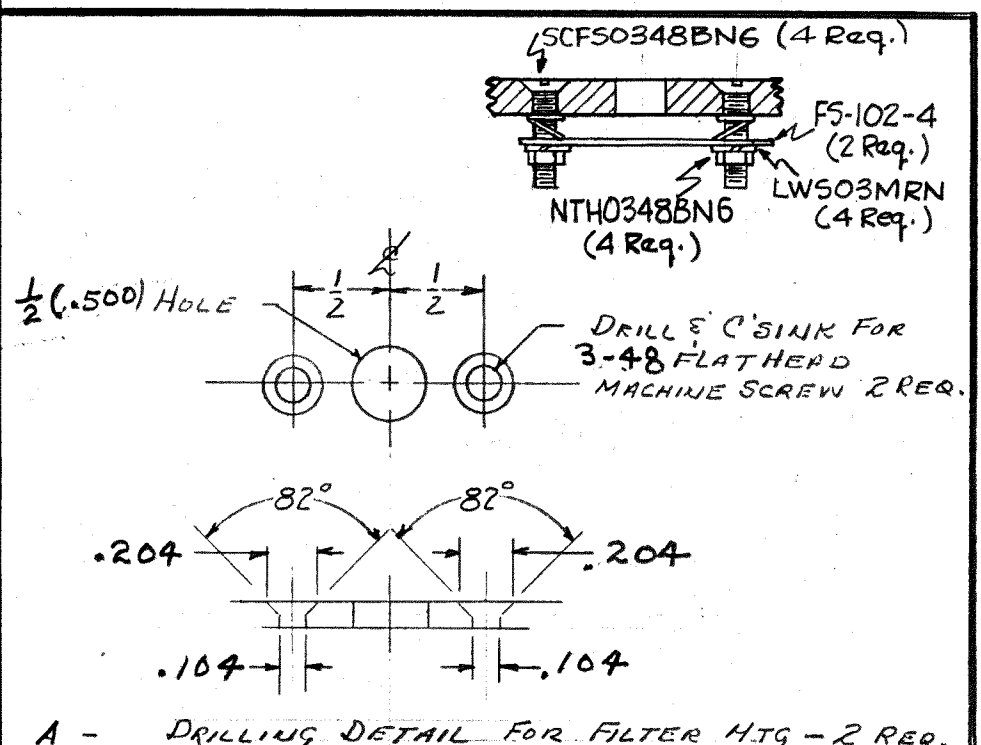
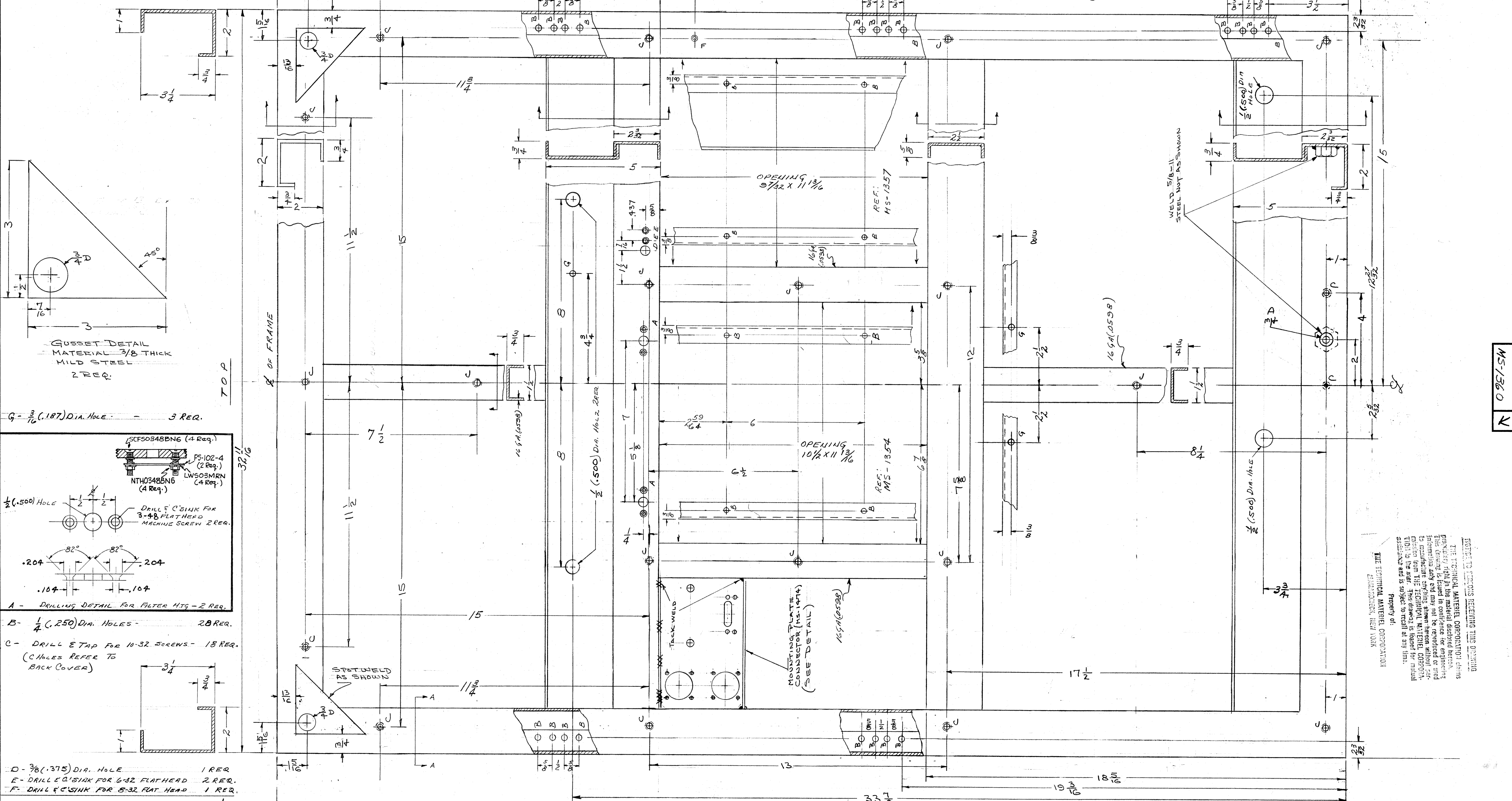
| | | | | | | |
|------------|--|---|---------|--------|---------|-----------|
| K | SEE SHT 7 | 62278 20740 GE | 9 | 25 | | |
| U | SEE SHEET 1 OF 12 | 3-9-66 15593 WHO | | | | |
| H | SEE SHEET 11 OF 12 | 2-15-63 8248 RU | | | | |
| G | SEE SHEETS 12 & 1 | 11-6-61 5807 RU | | | | |
| F | Revision Letter Clarified | 11-16-61 4019 JRM | | | | |
| B | ADDED A HOLE | 11-10-63 724 AER | | | | |
| A | DIM. CHANGE 32 1/8 W x 32 1/2 H | 11-10-63 | | | | |
| ISSUE ITEM | CHANGED FROM | DATE | CN. NO. | DRAFTS | CHECKER | ENG. APP. |
| TOLERANCES | | SCALE: 6"=10" | | | | |
| ALL OTHERS | DEC. DIM. \pm FRACTIONAL DIM. \pm ANGULAR DIM. \pm | DRILL, PUNCH, COMMERCIAL STOCK SIZES AND MANUFACTURERS TOLERANCES ARE NOT INCLUDED. | | | | |

| | | | |
|--------------|-------|-------------|----------|
| 1 | CAB-7 | PROJECT NO. | 10-13-58 |
| REQ PER UNIT | MODEL | ASSY. NO. | DATE |
| USED ON | | | |

| | | | |
|--------------------|------------|---|-----------------|
| REQ. ITEM | PART NO. | DESCRIPTION | SYMBOL |
| SEE S-396 | | THE TECHNICAL MATERIEL CORP. MAMARONECK, NEW YORK | |
| STOCK SIZE | CVA | CABINET | |
| MATERIAL | WGT PER PC | RIGHT SIDE VIEW | |
| TYPE & TEMPER | 10-8-58 | DUR | REF |
| HEAT TREAT. SPEC. | DRWN | ELEC. DES. APP. | MECH. DES. APP. |
| FINISH & SPEC. NO. | CHECKED | FINAL APPROVAL | |
| SHEET 4 OF 12 | | MS-1360 K | |

MS-1360 K

IF IT IS FOUND DESIRABLE TO CHANGE ANY TOLERANCE OR OTHER DETAIL SPECIFIED ON THIS DRAWING NOTIFY THE PURCHASER PROMPTLY.
 MAXIMUM ALLOWABLE TOLERANCES HAVE BEEN DETERMINED AND DEVIATIONS WILL BE CAUSE FOR REJECTION.
 REMOVE ALL BURRS AND SHARP EDGES



| ISSUE | ITEM | CHANGED FROM | DATE | CH. NO. | DRAFTS | CHECKER | ENG. APP. |
|-------|------|--|----------|---------|--------|---------|-----------|
| C | 1 | 3-48 CHAMFER DETAIL WAS 6-32 | 12/15/58 | | 616 | JUR | |
| B | 1 | DRILLING WAS LOCATED 60 DEG OF C/TAP HOLES OVERLAPPING CHANNELS WERE TO BE 1/8" DIA. HOLES | 12/15/58 | | 555 | MC | |
| A | 1 | DIMENSIONS CLARIFIED | 11/15/58 | | | | |

| ISSUE | ITEM | CHANGED FROM | DATE | CH. NO. | DRAFT | CK | APP |
|-------|------|---|----------|---------|-------|-----|-----|
| K | 1 | SEE SHT. 7 | 12/22/58 | | JMD | | |
| J | 1 | SEE SHEET 1 OF 12 | 3-9-58 | | 15893 | WHD | |
| H | 1 | SEE SHEET 11 OF 12 | 2-15-58 | | 18742 | | |
| G | 1 | SEE SHEET 12 OF 12 | 11-6-58 | | 5807 | RL | |
| F | 1 | Revision letter clarified and customer added to 'A' holes | 11/16/58 | | 4019 | DM | |
| E | 2 | 3-48 CHAMFER DETAIL | 11/15/58 | | 724 | AA | |
| D | 2 | MS-1474 & DETAIL ADDED TO THIS WAS 5/16 13/16 WAS 13/32 | 11/15/58 | | 668 | AA | |

NOTES
 MATERIAL 12 GA MILD STEEL UNLESS NOTED OTHERWISE.

| REQ. PER UNIT | MODEL | PROJECT NO. | ASBY. NO. | DATE | USED ON |
|---------------|-------|-------------|-----------|------|---------|
| SEE 5-396 | | | | | |

| REG. ITEM | PART NO. | DESCRIPTION | SYMBOL |
|-----------|----------|---|--------|
| SEE 5-396 | | THE TECHNICAL MATERIEL CORP. MAMARONECK, NEW YORK | |
| | | CABINET REAR VIEW | |
| | | 10-8-58 | REB |
| | | MECH. DES. APP. | REB |
| | | FINAL APPROVAL | REB |
| | | SEE - 396 | |
| | | FINISH & SPEC. NO. | |

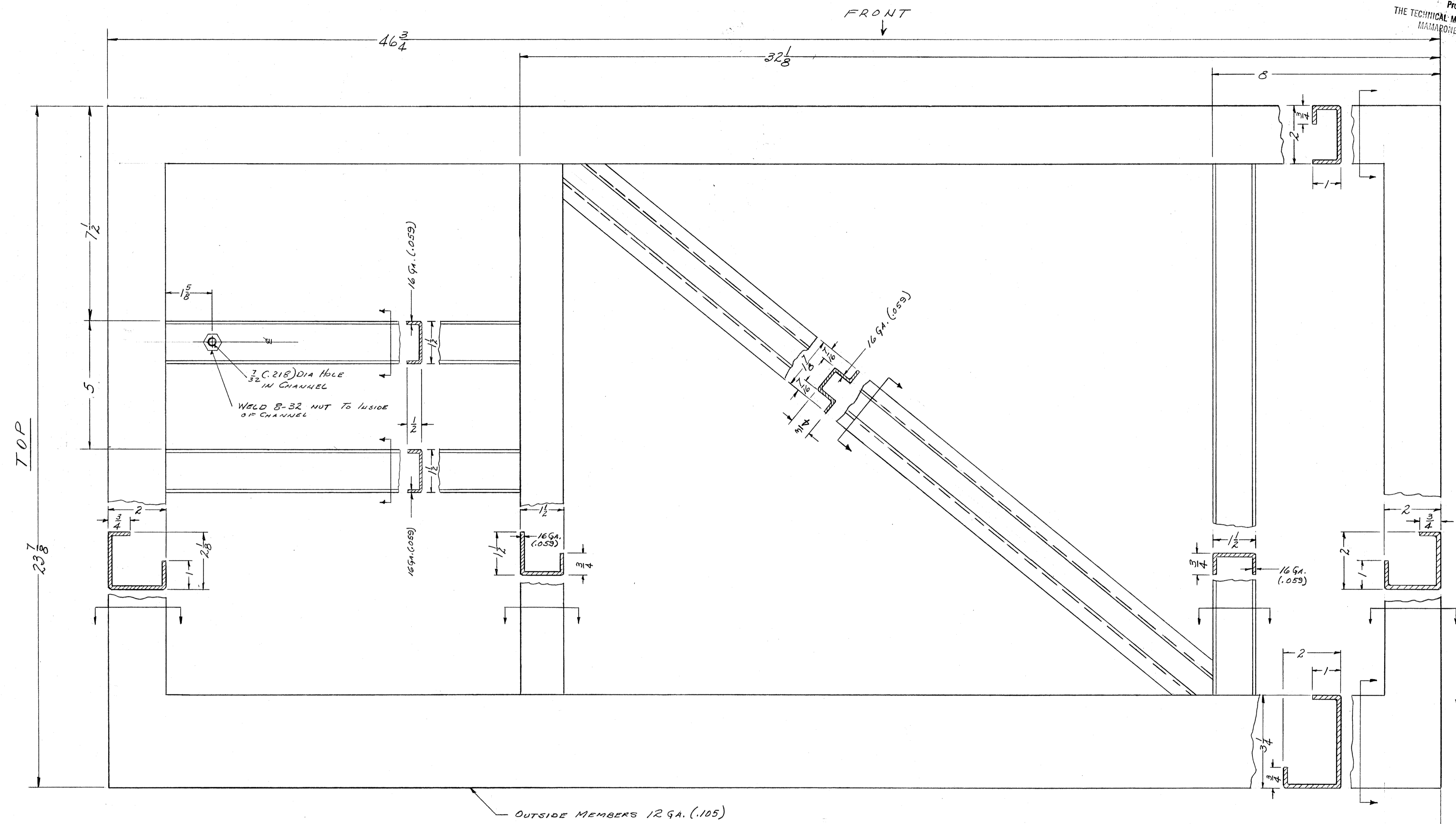
PROPERTY OF
 THE TECHNICAL MATERIEL CORPORATION
 MANHATTAN, NEW YORK

MS-1360 K

IF IT IS FOUND DESIRABLE TO CHANGE ANY TOLERANCE OR OTHER DETAIL SPECIFIED ON THIS DRAWING NOTIFY THE PURCHASER PROMPTLY.
 MAXIMUM ALLOWABLE TOLERANCES HAVE BEEN DETERMINED AND DEVIATIONS WILL BE CAUSE FOR REJECTION. REMOVE ALL BURRS AND SHARP EDGES

NOTE TO PERSONS RECEIVING THIS DRAWING
 THE TECHNICAL MATERIEL CORPORATION claims proprietary right in the material disclosed hereon. This drawing is issued in confidence for engineering information only and may not be reproduced or used to manufacture anything shown hereon without permission from THE TECHNICAL MATERIEL CORPORATION to the user. This drawing is loaned for mutual assistance and is subject to recall at any time.

Property of:
 THE TECHNICAL MATERIEL CORPORATION
 MAMARONECK, NEW YORK



NOTE: MATERIAL 12 GA. (.1046) MILD STEEL UNLESS NOTED OTHERWISE

MS-1360 K

| | | | | | | | |
|------------|---------------------------|-------------------------------|-------|---------|--------|---------|-----------|
| K | SEE SHT 7 | 6-22-57 | 20740 | GE | | | |
| J | SEE SHEET 1 OF 12 | 3-9-54 | 15893 | WV | | | |
| H | SEE SHEET 11 OF 12 | 2-15-53 | 2242 | | | | |
| G | SEE SHEET 12 OF 12 | 11-16-51 | 5807 | RU | | | |
| F | Revision Letter Clarified | 11/31/61 | 4019 | DM | | | |
| A | ADDED 8-32 NUT & WELDNUT | 11/4/58 | 560 | me | | | |
| ISSUE | ITEM | CHANGED FROM | DATE | CN. NO. | DRAFTS | CHECKER | ENG. APP. |
| TOLERANCES | | SCALE: | | | | | |
| ALL OTHERS | DEC. DIM. ± | DRILL PUNCH, COMMERCIAL STOCK | | | | | |
| | FRAC. DIM. ± | SIZES AND MANUFACTURERS | | | | | |
| | ANGULAR DIM. ± | TOLERANCES ARE NOT INCLUDED. | | | | | |

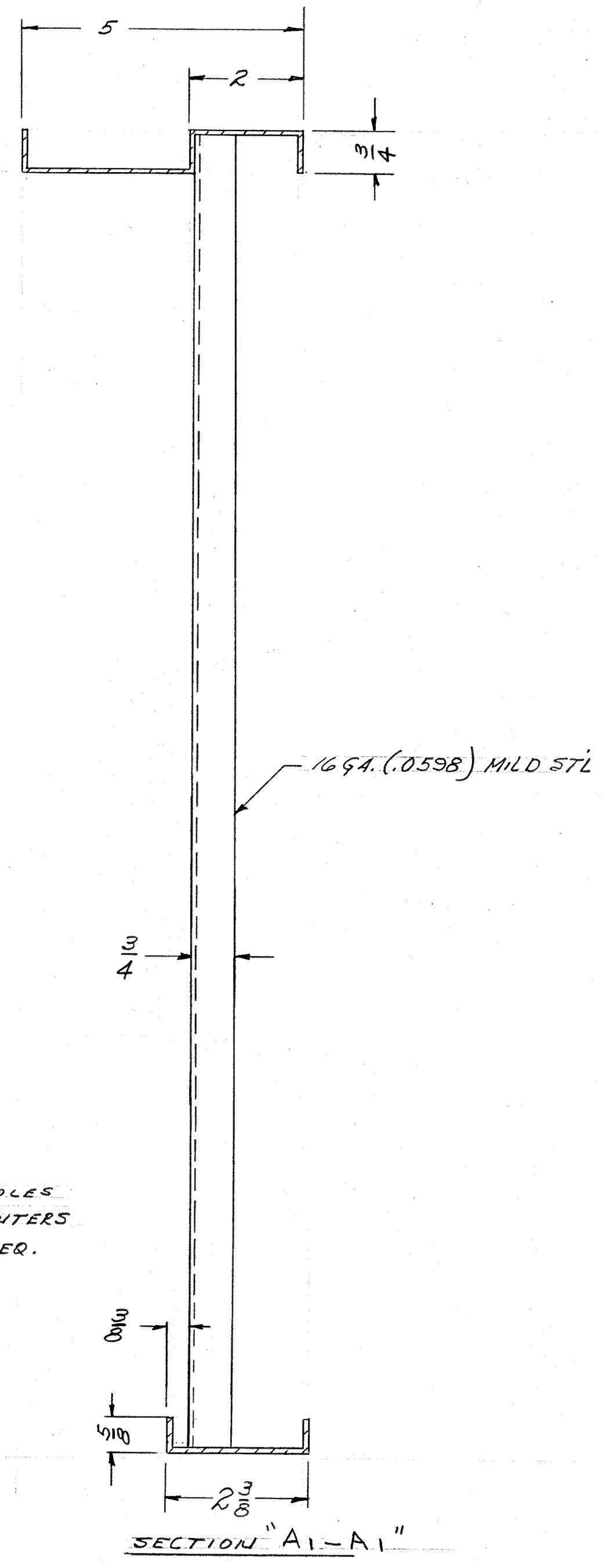
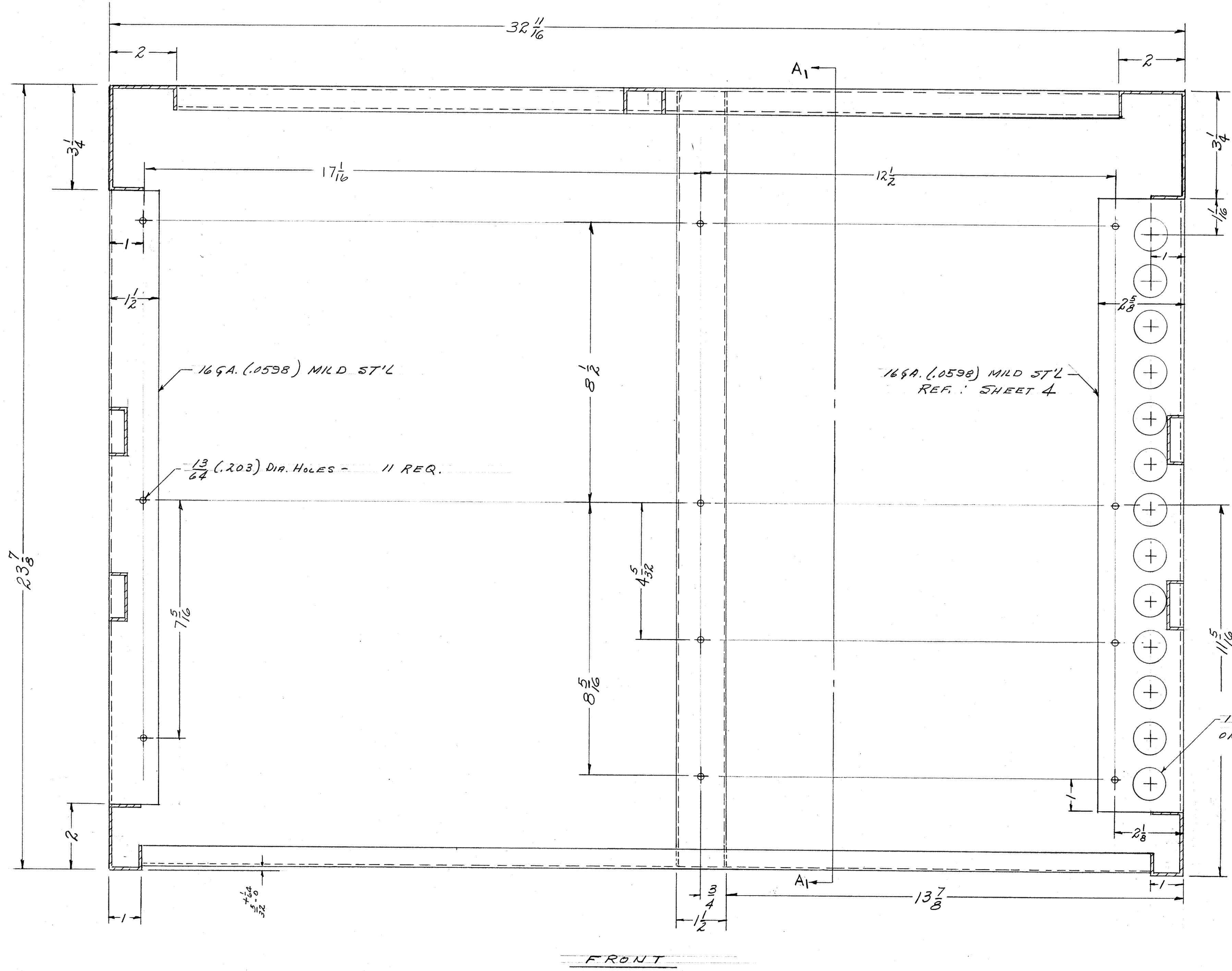
| | | | |
|--------------------|-----------|--|-----------------|
| REQ. ITEM | PART NO. | DESCRIPTION | SYMBOL |
| 1 | SEE S-396 | THE TECHNICAL MATERIEL CORP. MAMARONECK, NEW YORK | |
| STOCK SIZE | | CABINET | |
| MATERIAL | | LEFT SIDE VIEW | |
| WEIGHT PER PC. | | 10-8-58 | |
| TYPE & TEMPER | | DRAWN | MECH. DES. APP. |
| HEAT TREAT. SPEC. | | CHECKED | FINAL APPROVAL |
| FINISH & SPEC. NO. | | SEE S-396 | MS-1360 K |

IF IT IS FOUND DESIRABLE TO CHANGE ANY TOLERANCE OR OTHER DETAIL SPECIFIED ON THIS DRAWING NOTIFY THE PURCHASER PROMPTLY.
 MAXIMUM ALLOWABLE TOLERANCES HAVE BEEN DETERMINED AND DEVIATIONS WILL BE CAUSE FOR REJECTION. REMOVE ALL BURRS AND SHARP EDGES

NOTICE TO PERSONS RECEIVING THIS DRAWING

THE TECHNICAL MATERIEL CORPORATION claims proprietary right in the material disclosed herein. This drawing is issued in confidence for engineering information only and may not be reproduced or used to manufacture anything shown hereon without permission from THE TECHNICAL MATERIEL CORPORATION to the user. This drawing is loaned for mutual assistance and is subject to recall at any time.

Property of:
 THE TECHNICAL MATERIEL CORPORATION
 MAMARONECK, NEW YORK



NOTE: MATERIAL 12 GA. (.1046) MILD STEEL UNLESS NOTED OTHERWISE

| | | | | | | | |
|------------|---------------------------|--------------|-------|------------------------------|--------|---------|-----------|
| K | SEE SHEET 7 | 1/22/72 | 20710 | GE | 2 | 2 | |
| J | SEE SHEET 1 OF 2 | 3-9-66 | 15893 | WHJ | 2 | 2 | |
| H | SEE SHEET 11 OF 12 | 4-15-63 | 8242 | RE | 2 | 2 | |
| G | SEE SHEET 12 OF 1 | 11-15-66 | 5807 | RL | 2 | 2 | |
| F | Revision Letter Clarified | 1/31/61 | 4019 | DM | 2 | 2 | |
| E | DIHEUS CLARIFIED | 7/18/62 | 244 | RE | 2 | 2 | |
| D | 5/2 WAS 1/8 | 12/6/62 | 556 | RE | 2 | 2 | |
| A | REDIMENSIONED | 1/12/63 | | RE | 2 | 2 | |
| ISSUE | ITEM | CHANGED FROM | DATE | CN. NO. | DRAFTS | CHECKER | ENG. APP. |
| TOLERANCES | | | | SCALE: 6"=1'-0" | | | |
| ALL | DEC. DIM. ± | SEE 5-396 | | DRILL PUNCH COMMERCIAL STOCK | | | |
| OTHERS | FRAC. DIM. ± | SEE 5-396 | | SIZES AND MANUFACTURERS | | | |
| | ANGULAR DIM. ± | SEE 5-396 | | TOLERANCES ARE NOT INCLUDED. | | | |

| | | | | | |
|--------------|-------|-------------|-----------|----------|---------|
| 1 | CAB-7 | PROJECT NO. | ABBY. NO. | 10-13-58 | DATE |
| REQ PER UNIT | MODEL | PROJECT NO. | ABBY. NO. | DATE | USED ON |

| REQ. ITEM | PART NO. | DESCRIPTION | SYMBOL |
|--------------------|----------------|--|---------------------------------|
| SEE 5-396 | | THE TECHNICAL MATERIEL CORP. MAMARONECK, NEW YORK | |
| STOCK SIZE | | CABINET | |
| MATERIAL | WEIGHT PER PC. | CROSS SECTION A-A | |
| TYPE & TEMPER | | 10-13-58 | REB |
| HEAT TREAT. SPEC. | | DRAWN | ELEC. DES. APP. MECH. DES. APP. |
| FINISH & SPEC. NO. | | CHECKED | FINAL APPROVAL |
| | | SHEET 9 OF 12 | MS-1360 K |

MS-1360 K

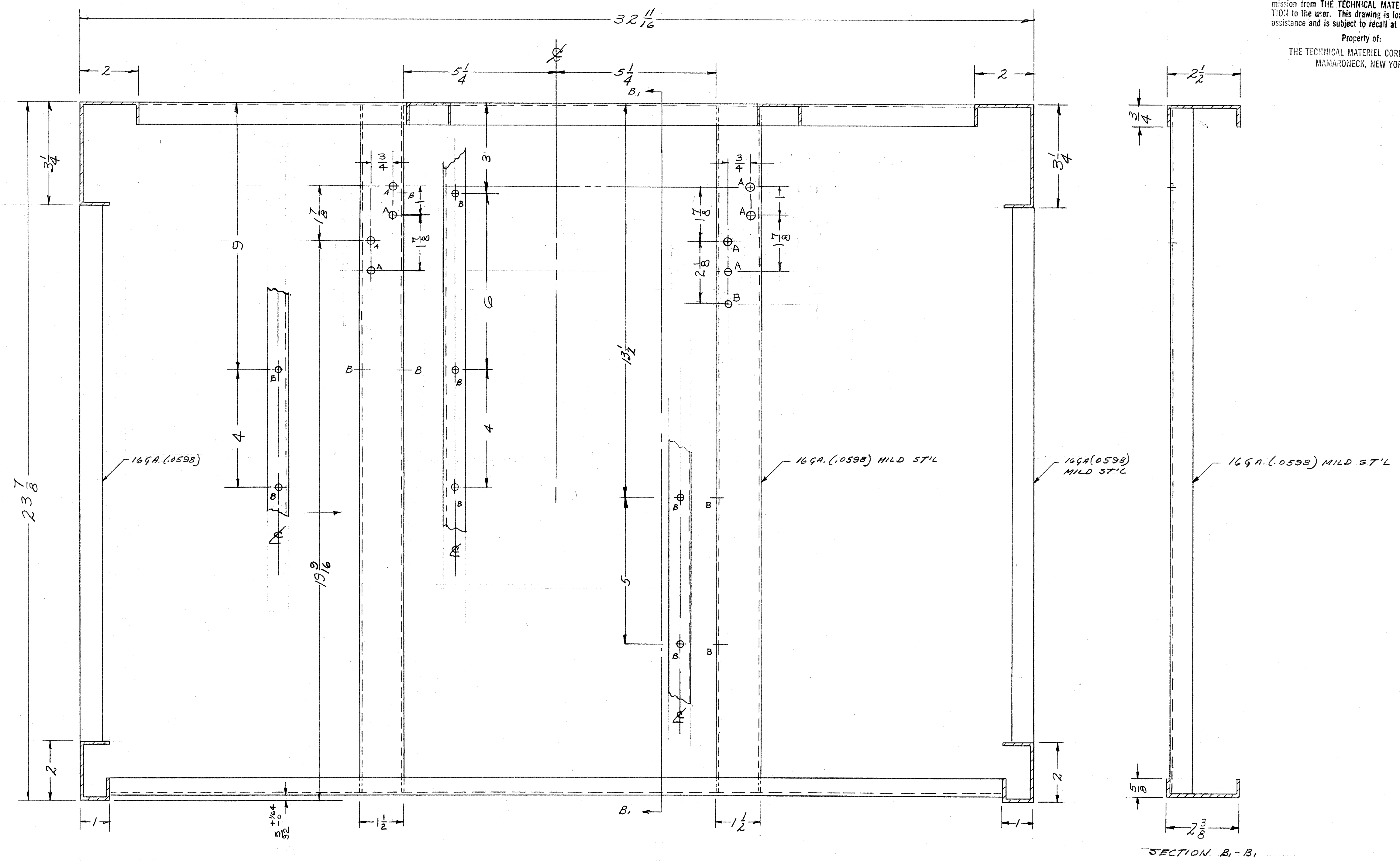
IF IT IS FOUND DESIRABLE TO CHANGE ANY TOLERANCE OR OTHER DETAIL SPECIFIED ON THIS DRAWING NOTIFY THE PURCHASER PROMPTLY.
 MAXIMUM ALLOWABLE TOLERANCES HAVE BEEN DETERMINED AND DEVIATIONS WILL BE CAUSE FOR REJECTION. REMOVE ALL BURRS AND SHARP EDGES

NOTICE TO PERSONS RECEIVING THIS DRAWING

THE TECHNICAL MATERIEL CORPORATION claims proprietary right in the material disclosed herein. This drawing is issued in confidence for engineering information only and may not be reproduced or used to manufacture anything shown herein without permission from THE TECHNICAL MATERIEL CORPORATION to the user. This drawing is loaned for mutual assistance and is subject to recall at any time.

Property of:
 THE TECHNICAL MATERIEL CORPORATION
 MAMARONECK, NEW YORK

HOLE LEGEND
 A - $\frac{9}{32}$ (.281) DIA. HOLE - 8 REQ.
 B - $\frac{13}{64}$ (.203) DIA. HOLE - 8 REQ.



NOTE: MATERIAL 12 GA. (.1046) MILD STEEL UNLESS NOTED OTHERWISE.

| | | | | | | |
|------------|--|----------|-----------|--|---------|-----------|
| K | SEE SHT. 7 | 6227 | 20740 | GE | ES | 3 |
| J | SEE SHEET 1 OF 12 | 3-9-44 | 15893 | WLD | RCB | 2 |
| H | SEE SHEET 11 OF 12 | 2-15-43 | 8242 | WLD | RCB | 2 |
| G | SEE SHEET 12 OF 12 | 11-15-41 | 5807 | WLD | RCB | 2 |
| F | Revision Letter Clarified | 1/21/61 | 4019 | DRY | RCB | 2 |
| D | (4) 'A' HOLES ADDED | 9-21-60 | 3010 | DRY | RCB | 2 |
| C | 2 1/8 DIM. WAS 1 3/4 | 5-20-60 | 2305 | DRY | RCB | 2 |
| B | 1 ANT. 'B' HOLES WAS 4 2 ANT. 'A' HOLES WAS 8 | 1/23/59 | 724 | DRY | RCB | 2 |
| A | 1 ANT. 'A' HOLES WAS 4 2 ADDED 'B' HOLES | 8/16/57 | 557 | DRY | RCB | 2 |
| ISSUE | CHANGED FROM | DATE | CN. NO. | DRAFTS | CHECKER | ENG. APP. |
| ALL OTHERS | DEC. DIM. ± FRAC. DIM. ± ANGULAR DIM. ± | ? | SEE 5-396 | DRILL PUNCH, COMMERCIAL STOCK SIZES AND MANUFACTURERS TOLERANCES ARE NOT INCLUDED. | | |

| | | | | | |
|--------------|-------|-------------|------------|----------|------|
| 1 | CAB-7 | PROJECT NO. | ABS'Y. NO. | 10-13-58 | DATE |
| REQ PER UNIT | MODEL | USED ON | | | |

| | | | |
|--------------------|----------------|--|----------------|
| REQ. ITEM | PART NO. | DESCRIPTION | SYMBOL |
| SEE-5-396 | | THE TECHNICAL MATERIEL CORP. MAMARONECK, NEW YORK | |
| STOCK SIZE | | CABINET | |
| MATERIAL | WEIGHT PER PC. | SECTION B-B | |
| TYPE & TEMPER | | 10-13-58 | REB |
| HEAT TREAT. SPEC. | | 2-4-60 | RCB |
| FINISH & SPEC. NO. | | CHECKED | FINAL APPROVAL |
| | | | |

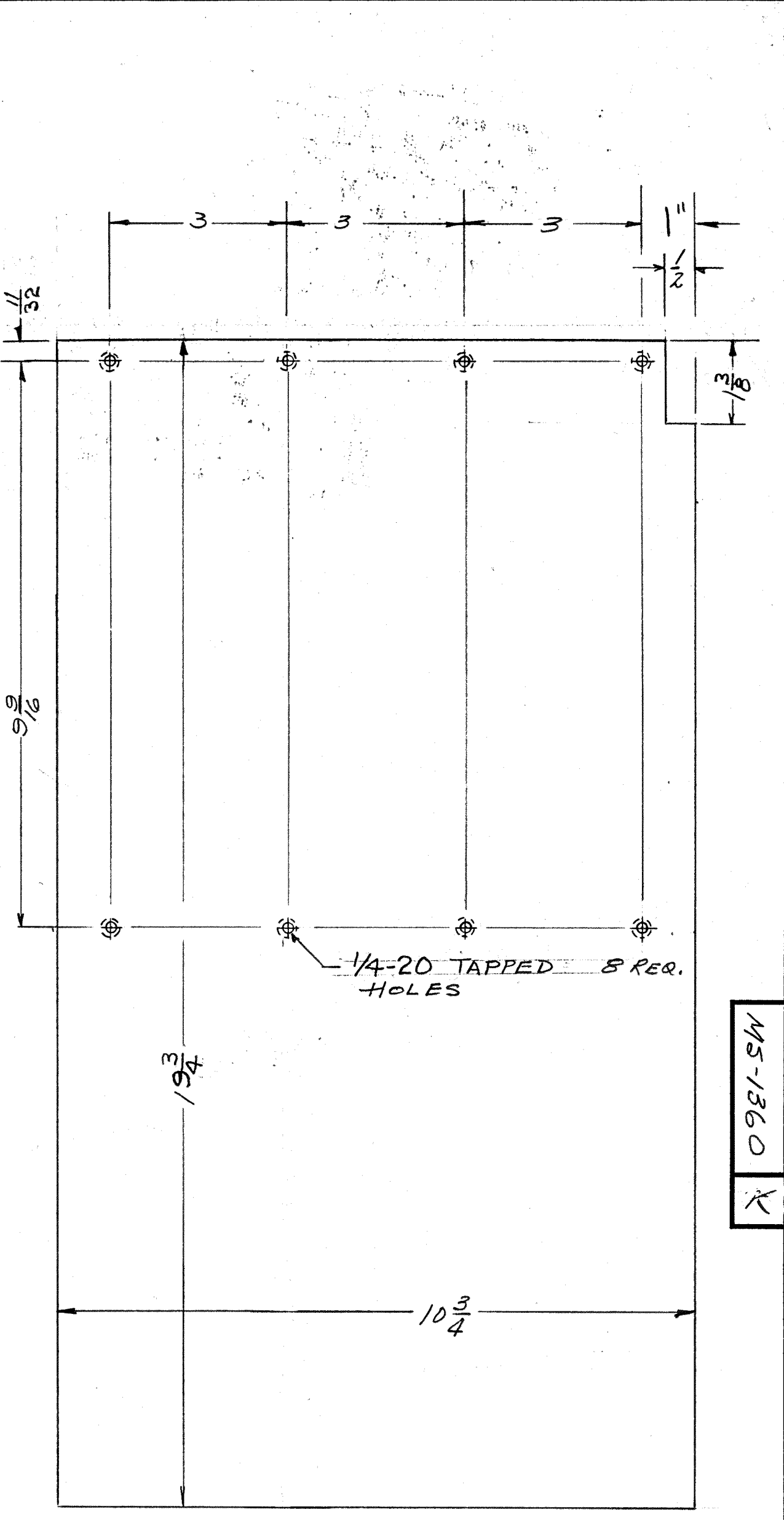
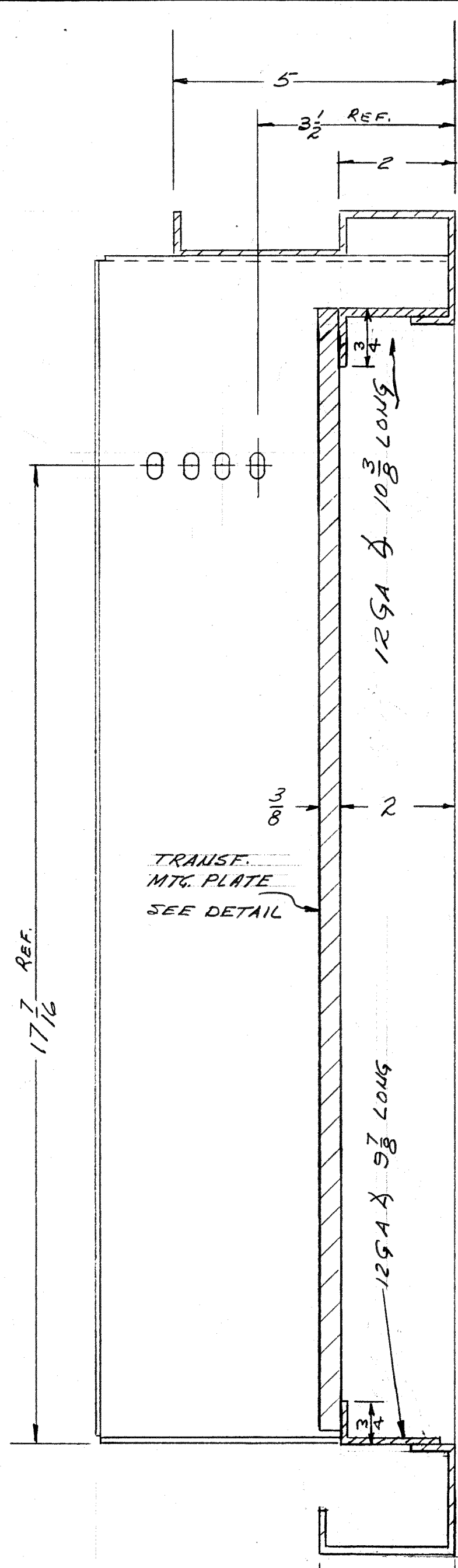
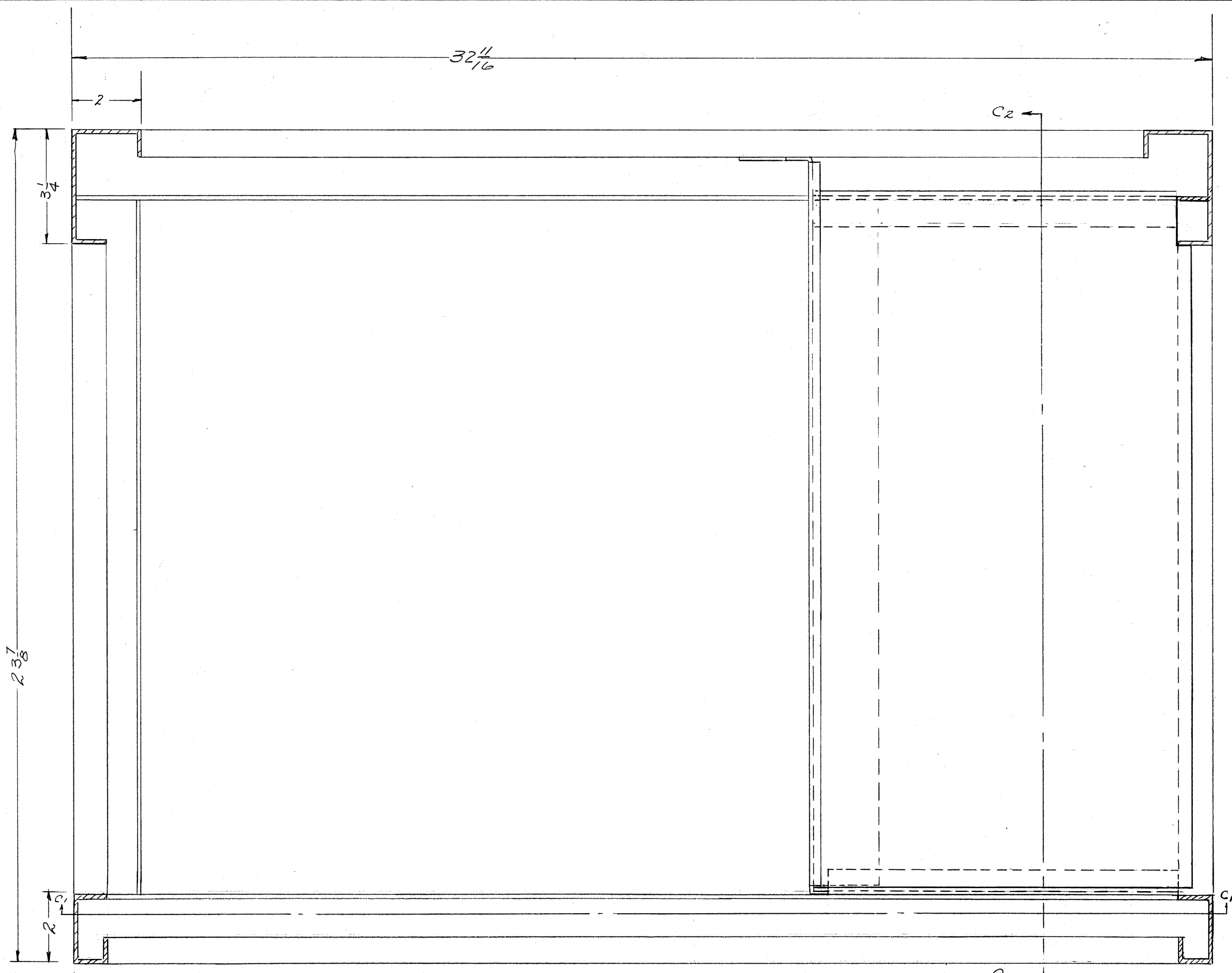
MS-1360 K

IF IT IS FOUND DESIRABLE TO CHANGE ANY TOLERANCE OR OTHER DETAIL SPECIFIED ON THIS DRAWING NOTIFY THE PURCHASER PROMPTLY.
 MAXIMUM ALLOWABLE TOLERANCES HAVE BEEN DETERMINED AND DEVIATIONS WILL BE CAUSE FOR REJECTION. REMOVE ALL BURRS AND SHARP EDGES

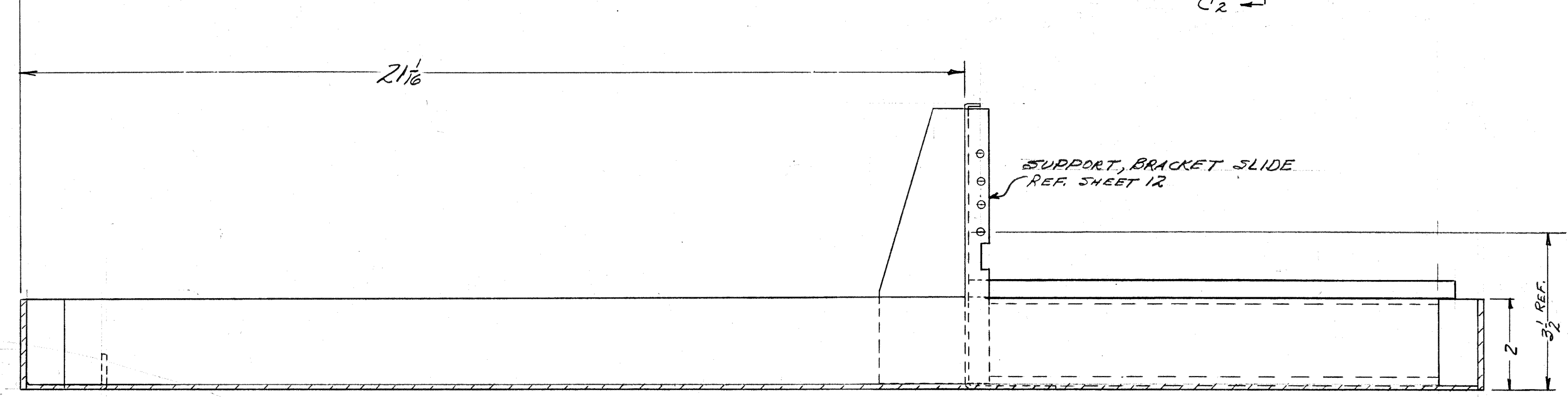
NOTICE TO PERSONS RECEIVING THIS DRAWING

THE TECHNICAL MATERIEL CORPORATION claims proprietary right in the material disclosed herein. This drawing is issued in confidence for engineering information only and may not be reproduced or used to manufacture anything shown hereon without permission from THE TECHNICAL MATERIEL CORPORATION to the user. This drawing is loaned for mutual assistance and is subject to recall at any time.

Property of:
 THE TECHNICAL MATERIEL CORPORATION
 MAMARONECK, NEW YORK



TRANSFORMER MOUNTING PLATE
 MAT'L: 3/16" PLATE STL



SECTION C1-C1

| | | | | | | |
|---|---|----------|-------|-----|----|----|
| K | SEE SHT. 7 | 6/27/60 | 20710 | GE | ES | ES |
| J | SEE SHEET 1 OF 12 | 5-9-66 | 15893 | WHD | ES | ES |
| H | ON TRANS. MTC. PLATE DIM 1" WAS 7/8 | 2-15-63 | 8242 | RL | ES | ES |
| G | SEE SHEET 12 & 1 | 11-16-61 | 5807 | RL | ES | ES |
| F | Revision Letter Clarified | 7/16/61 | 4019 | DM | ES | ES |
| D | 2 1/2 WAS 2 1/8 | | | | ES | ES |
| C | 1/4-20 TAPPED HOLES WERE 3/16" (8 REQ.) | 7-1-60 | C16 | RL | ES | ES |
| B | 1/4" X 2" WAS 5/8" X 1 1/4" | | | | ES | ES |
| A | 1/4" WAS 19/16 | | | | ES | ES |
| A | TRANS. MTC. PLATE DIM 19 1/8 WAS 19 3/8 CUTO PRODUCE DIMS | 7/6/63 | | RL | ES | ES |

ISSUE ITEM CHANGED FROM DATE CN. NO. DRAFTS CHECKER ENG. APP.

TOLERANCES SCALE: 6" = 1'-0"

ALL DEC. DIM. ± 3 SEE DRILL PUNCH COMMERCIAL STOCK OTHERS FRAC. DIM. ± 3 S-396 SIZES AND MANUFACTURERS ANGULAR DIM. ± 3 S-396 TOLERANCES ARE NOT INCLUDED.

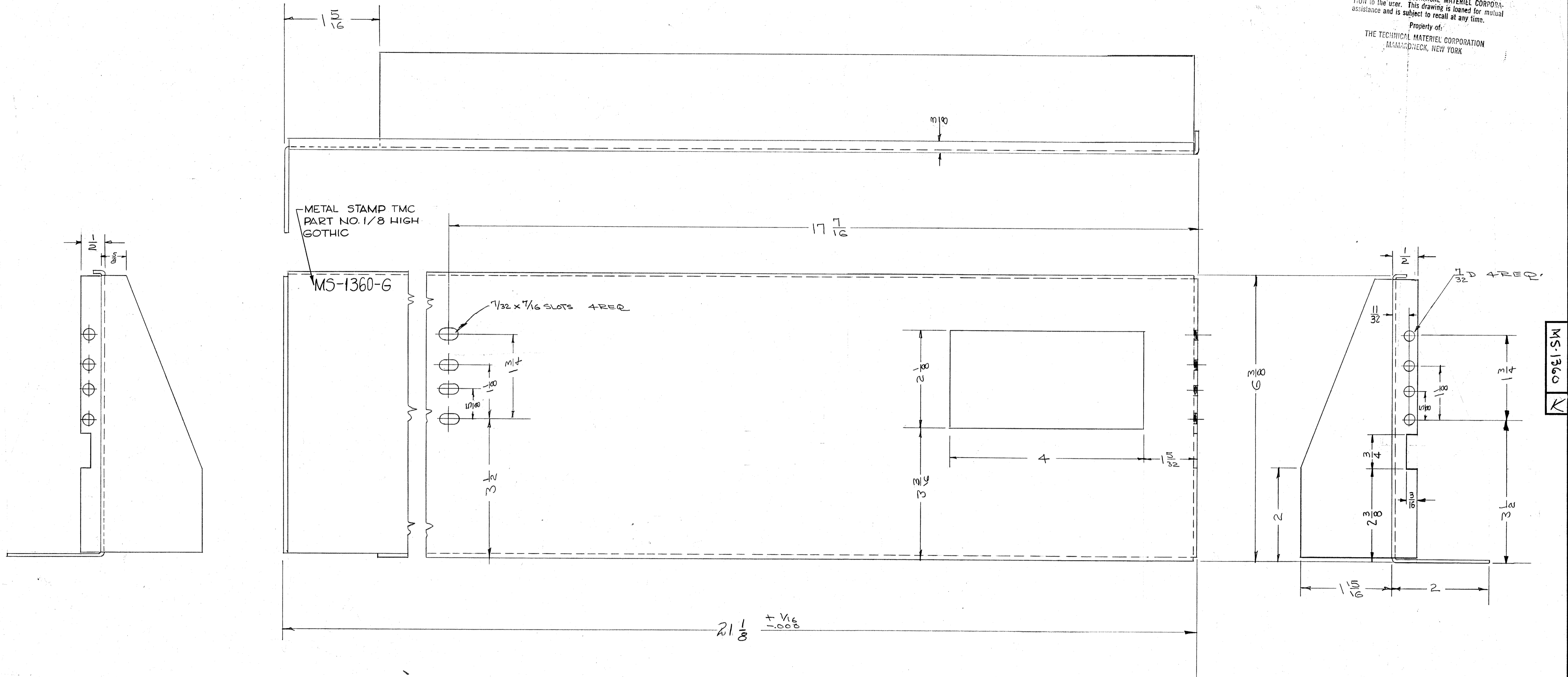
| | | | |
|--------------|-------|-------------|----------|
| 1 | CAB-7 | PROJECT NO. | 10-13-58 |
| REQ PER UNIT | MODEL | ASBY. NO. | DATE |
| USED ON | | | |

| REQ. ITEM | PART NO. | DESCRIPTION | SYMBOL |
|--------------------|----------|---|---------------------------------|
| SEE S-396 | | THE TECHNICAL MATERIEL CORP. MAMARONECK, NEW YORK | |
| STOCK SIZE | | CABINET | |
| MATERIAL | | SECTION C-C | |
| WEIGHT PER PC. | | | |
| TYPE & TEMPER | | 10-13-58 | |
| HEAT TREAT. SPEC. | | DRWN: JAC | ELEC. DES. APP. MECH. DES. APP. |
| FINISH & SPEC. NO. | | CHECKED: JAC | FINAL APPROVAL: JEM |
| | | SHEET 11 OF 12 | MS-1360 K |

MS-1360 K

IF IT IS FOUND DESIRABLE TO CHANGE ANY TOLERANCE OR OTHER DETAIL, SPECIFIED ON THIS DRAWING NOTIFY THE PURCHASER PROMPTLY.
 MAXIMUM ALLOWABLE TOLERANCES HAVE BEEN DETERMINED AND DEVIATIONS WILL BE CAUSE FOR REJECTION. REMOVE ALL BURRS AND SHARP EDGES

NOTICE TO PERSONS RECEIVING THIS DRAWING
 THE TECHNICAL MATERIEL CORPORATION claims proprietary right in the material disclosed hereon. This drawing is issued in confidence for engineering information only and may not be reproduced or used to manufacture anything shown hereon without permission from THE TECHNICAL MATERIEL CORPORATION to the user. This drawing is loaned for mutual assistance and is subject to recall at any time.
 Property of:
 THE TECHNICAL MATERIEL CORPORATION
 MAMARONECK, NEW YORK



| | | | | | | | |
|------------|---------------------------|----------------|-------|---|--------|---------|-----------|
| K | SEE SHIT. 7 | 6222 | 2710 | GE | ES | ES | |
| N | SEE SHEET 1 OF 12 | 3-9-66 | 15893 | W | W | W | |
| H | SEE SHEET 11 OF 12 | 24543 | 8242 | W | W | W | |
| G | 3/4 x 3/16 Notch Added | 11-15-61 | 5801 | RL | RL | RL | |
| E | Revision Letter Clarified | 11/15/61 | 4019 | DM | DM | DM | |
| D | Pictorial Clarified | 1/16/62 | - | HL | HL | HL | |
| A | Dim. Change: 3/8 W x 3/16 | 11/14/63 | - | HL | HL | HL | |
| ISSUE | ITEM | CHANGED FROM | DATE | CH. NO. | DRAFTS | CHECKER | ENG. APP. |
| TOLERANCES | | SCALE: 1" = 1" | | | | | |
| ALL OTHERS | DEC. DIM. ± | SEE S-396 | | DRILL, PUNCH, COMMERCIAL STOCK SIZES AND MANUFACTURERS TOLERANCES ARE NOT INCLUDED. | | | |

| | | | | | |
|--------------------|-------|----------------|-----------|-------------------|---------|
| 1 | CAB-7 | PROJECT NO. | ABBY. NO. | 8-25-58 | DATE |
| REQ PER UNIT | MODEL | PROJECT NO. | ABBY. NO. | DATE | USED ON |
| MATERIAL | | WEIGHT PER PC | | HEAT TREAT. SPEC. | |
| STEEL | | 12 GA. | | MILD | |
| MATERIAL | | WEIGHT PER PC | | HEAT TREAT. SPEC. | |
| MILD | | 12 GA. | | MILD | |
| TYPE & TEMPER | | DRAWN | | ELEC. DES. APP. | |
| MILD | | W.R. | | R.F.R. | |
| FINISH & SPEC. NO. | | CHECKED | | FINAL APPROVAL | |
| SEE S-396 | | G.H. | | R.K.B. | |
| FINISH & SPEC. NO. | | SHEET 12 OF 12 | | MS-1360 K | |