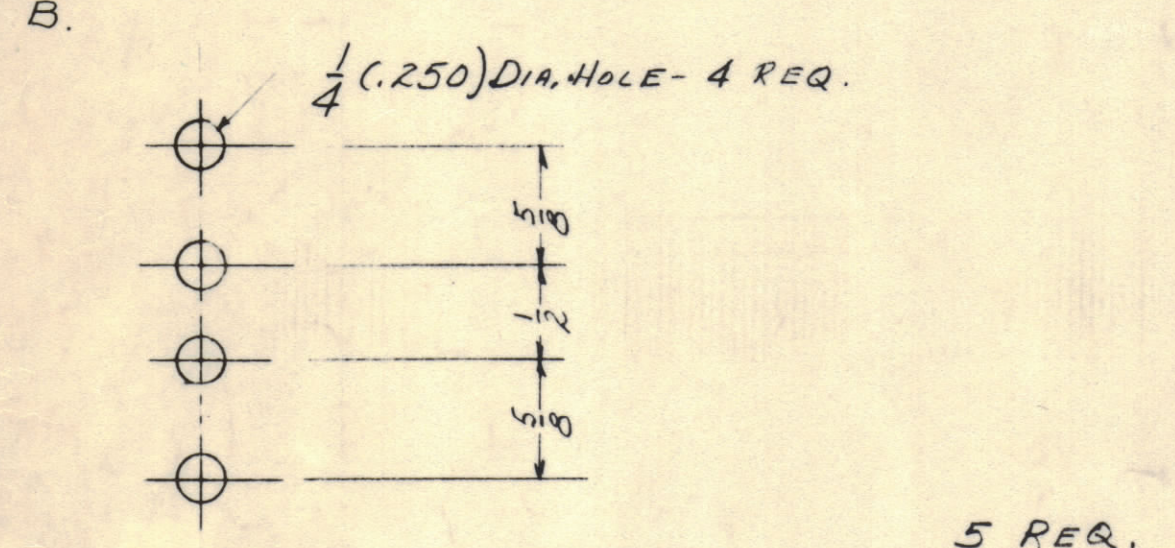
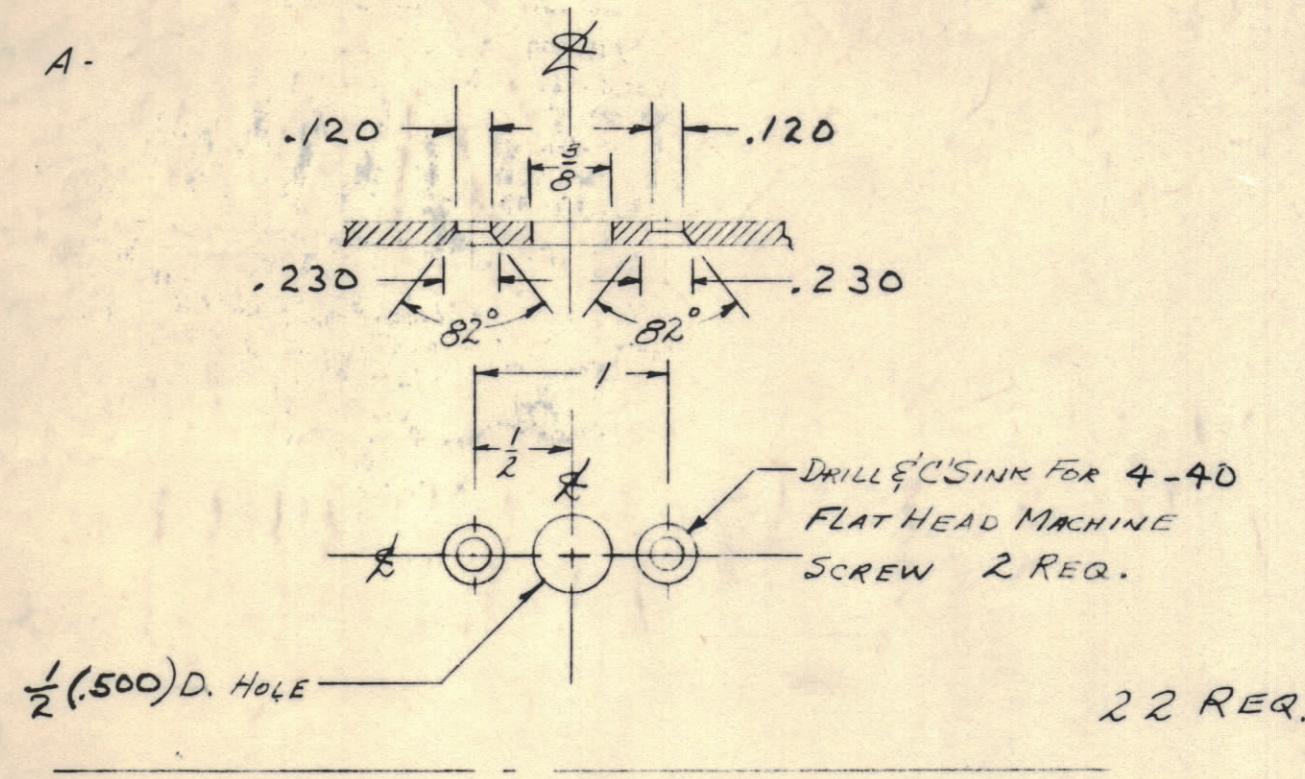


IF IT IS FOUND DESIRABLE TO CHANGE ANY TOLERANCE OR OTHER DETAIL SPECIFIED ON THIS DRAWING NOTIFY THE PURCHASER PROMPTLY.

MAXIMUM ALLOWABLE TOLERANCES HAVE BEEN DETERMINED AND DEVIATIONS WILL BE CAUSE FOR REJECTION. REMOVE ALL BURRS AND SHARP EDGES.

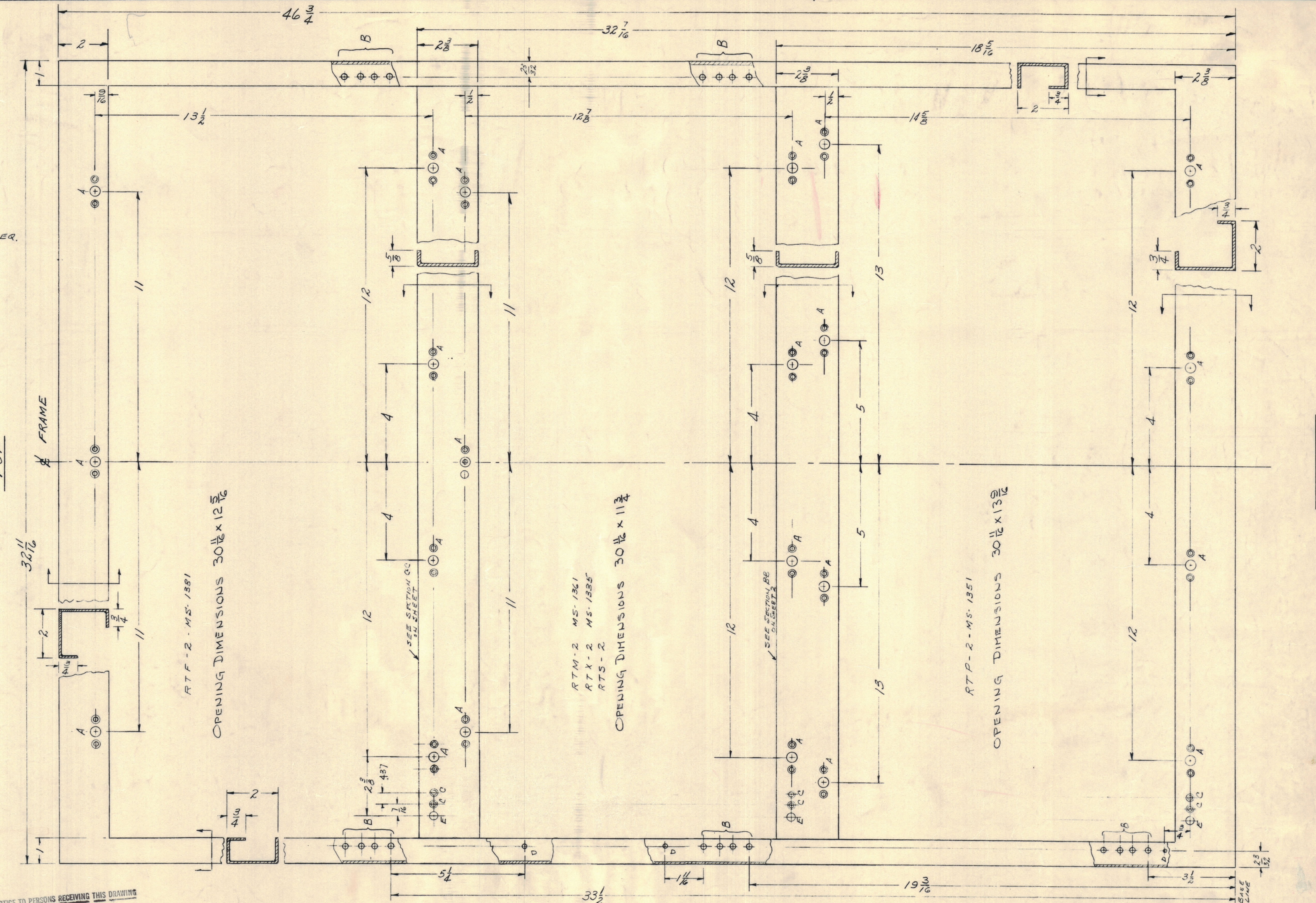


- E- $\frac{9}{16}$ (.375) DIA. HOLE 3 REQ.
 D- $\frac{11}{64}$ (.171) DIA. HOLE 3 REQ.
 C- DRILL & C/SINK FOR 6-32 FLATHEAD SCREW 6 REQ.
- TOP

| K | SEE SHT 7 | 6277 | 2074 | GE | EB | EB | |
|-------|---|--------------|-------|---------|--------|---------|-----------|
| J | SEE SHEET 1 OF 12 | 3-9-66 | 15893 | WJW | QCW | J | |
| H | SEE SHEET 11 OF 12 | 2-15-63 | 2242 | RU | J | J | |
| G | See Sheet 12 of 12 | 1-16-61 | 5807 | RU | J | J | |
| F | Revision Letter Clarified | 1/31/61 | 4019 | DOM | QCW | J | |
| E | "E" HOLE WAS $5/16$ | | | | | | |
| | $19 3/16$ WAS $19 3/8$ | | | | | | |
| D | 4-40 C/SINK DETAIL WAS 6-32 | | | | | | |
| | "E" WAS C/SINK WAS BY "C/SINK" BUBBLE CUTAWAY | | | | | | |
| C | "D" 5/16 BELOW "E" HOLE WAS 1/2 ABOVE "E" HOLES | | | | | | |
| B | "D" HOLES RELOCATED | | | | | | |
| A | "D" WAS 2 1/2 WAS 2 1/2 1/2 WAS 3/8 | | | | | | |
| ISSUE | ITEM | CHANGED FROM | DATE | CN. NO. | DRAFTS | CHECKER | ENG. APP. |

NOTICE TO PERSONS RECEIVING THIS DRAWING
 THE TECHNICAL MATERIEL CORPORATION claims proprietary right in the material disclosed hereon. This drawing is issued in confidence for engineering information only and may not be reproduced or used to manufacture anything shown hereon without permission from THE TECHNICAL MATERIEL CORPORATION to the user. This drawing is loaned for mutual assistance and is subject to recall at any time.

Property of:
 THE TECHNICAL MATERIEL CORPORATION
 MAMARONECK, NEW YORK



NOTE. MATERIAL 12 GA (.1046) MILD STEEL UNLESS NOTED OTHERWISE.

ALL DIM. ± .015
 DEC. DIM. ± .005
 OTHER ANGULAR DIM. ± .5°

SCALE: 6"=1'0"

DRILL, PUNCH, COMMERCIAL STOCK SIZES AND MANUFACTURERS TOLERANCES ARE NOT INCLUDED.

| | | | | |
|---------------|-------|-------------|-----------|------|
| 1 | CAB-7 | PROJECT NO. | ABBY. NO. | DATE |
| REQ. PER UNIT | | USED ON | | |

| REQ. ITEM | PART NO. | DESCRIPTION | SYMBOL |
|--------------------|----------|--|-----------------|
| SEE S-396 | | THE TECHNICAL MATERIEL CORP. MAMARONECK, NEW YORK | |
| STOCK SIZE | | | |
| MATERIAL | | CABINET FRONT VIEW | |
| WEIGHT PER PC. | | | |
| TYPE & TEMPER | | 10-8-65 | REF |
| HEAT TREAT. SPEC. | | 1/2 | MECH. DES. APP. |
| FINISH & SPEC. NO. | | CHECKED | FINAL APPROVAL |
| | | | MS-1360 K |