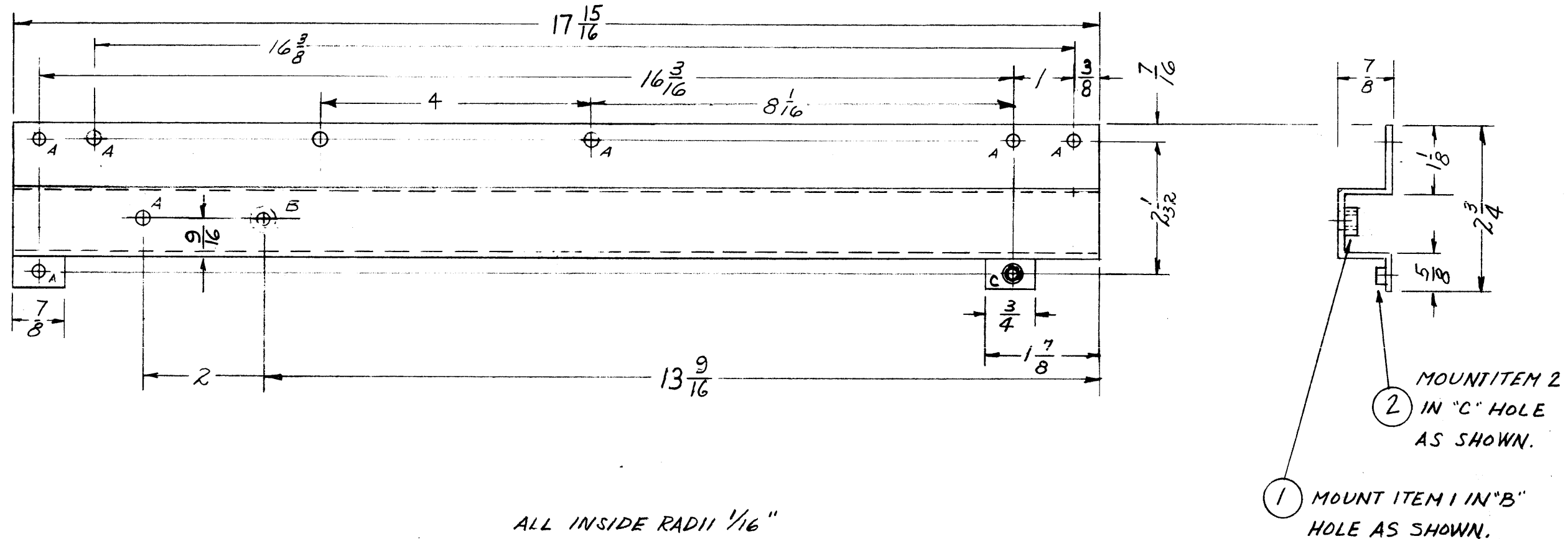


A -  $\frac{15}{64}$  (.234) DIA. HOLE 8 REQ.  
 B - .251-.254 DIA. HOLE FOR NT-129-1032-4 1 REQ.  
 C - .221-.224 DIA. HOLE FOR NT-129-0832-6 1 REQ.



ALL INSIDE RADII  $\frac{1}{16}$ "

NOTICE TO PERSONS RECEIVING THIS DRAWING

THE TECHNICAL MATERIEL CORPORATION claims proprietary right in the material disclosed hereon. This drawing is issued in confidence for engineering information only and may not be reproduced or used to manufacture anything shown hereon without permission from THE TECHNICAL MATERIEL CORPORATION to the user. This drawing is loaned for mutual assistance and is subject to recall at any time.

Property of:  
 THE TECHNICAL MATERIEL CORPORATION,  
 MAMARONECK, NEW YORK

|                              |       |   |  |         |         |         |           |
|------------------------------|-------|---|--|---------|---------|---------|-----------|
| F                            | 3     | ITEM 2 ADDED, ITEM 1 WAS 4                            | 7-12-62  | 6888    | J.F.    | J.C.S.  | J.P.B.    |
|                              | 2     | 2 (A) HOLES DELETED                                   |  |         |         |         |           |
|                              | 1     | 1 (C) HOLE ADDED                                      |  |         |         |         |           |
| E                            | 4     | 9/16 DIM. WAS 5/8                                     | 10-13-60   | 3194    | M.F.    | J.H.E.  | J.P.B.    |
|                              | 3     | 13 9/16 DIM. WAS 13 5/8                               |  |         |         |         |           |
|                              | 2     | 3/8 DIM. WAS 7/16                                     |  |         |         |         |           |
|                              | 1     | O/A LENGTH WAS 18 1/16                                |  |         |         |         |           |
| D.                           | 1     | ONE "A" HOLE $\frac{15}{64}$ (.234) ADDED             | 11/14/60   | 1763    | M.F.    | J.H.E.  | J.P.B.    |
| C                            | 1     | 13 5/8 DIM WAS 13 15/16                               | 5/26/59  | 1032    | J.C.B.  | J.H.E.  | J.P.B.    |
| B                            | 1     | QUAN. "A" WAS 10<br>FIN. WAS 3101 & 5107              | 5/14/59  | 1015    | J.C.B.  | J.H.E.  | J.P.B.    |
| A                            |       | 1 1/8 WAS 9/8, 7/16 WAS 5/16<br>ADDED 2 "A" & (1) "B" | 4-16-59  |         | J.C.B.  | J.H.E.  | J.P.B.    |
| ISSUE                        | ITEM  | CHANGED FROM  | DATE   | CH. NO. | DRAFTS  | CHECKER | ENG. APP. |
| TOLERANCES                   |       |   | SCALE: <i>CP</i>   |         |         |         |           |
| DEC. DIM. $\pm$              |       |   | MAXIMUM ALLOWABLE TOLERANCES HAVE BEEN DETERMINED AND ANY DEVIATIONS WILL BE CAUSE FOR REJECTION. REMOVE ALL BURRS AND SHARP EDGES |         |         |         |           |
| FRAC. DIM. $\pm$ <i>1/64</i> |       |   |  |         |         |         |           |
| ANGULAR DIM. $\pm$           |       |   |  |         |         |         |           |
| 1                            |       | RTS-2   |  |         |         |         | 4-16-59   |
| 1                            |       | RTX-2   |  | E-1041  |         |         | 9-16-58   |
| REQ. PER UNIT                | MODEL | PROJECT NO.   | ASS'Y. NO.   | DATE    | USED ON |         |           |

|                    |          |                   |                              |                 |
|--------------------|----------|-------------------|------------------------------|-----------------|
| 1                  | 2        | NT-129-0832-6     | NUT, ROUND, SWAGE TYPE       |                 |
| 1                  | 1        | NT-129-1032-6     | NUT, ROUND, SWAGE TYPE       |                 |
| REQ. ITEM          | PART NO. |                   | DESCRIPTION                  | SYMBOL          |
| .081 THICK         |          |                   | THE TECHNICAL MATERIEL CORP. |                 |
| STOCK SIZE         |          |                   | MAMARONECK, NEW YORK         |                 |
| ALUMINUM           |          |                   | CROSS MEMBER, RIGHT          |                 |
| MATERIAL           |          |                   |                              |                 |
| 5052-H32           | CPA      | 9/16/58           | 16                           | <i>J.P.B.</i>   |
| TYPE & TEMPER      |          | HEAT TREAT. SPEC. | DRAWN                        | CHECKED         |
| 5404 IRIDITE       |          |                   | <i>R.F.B.</i>                |                 |
| FINISH & SPEC. NO. |          |                   | ELEC. DES. APP.              | MECH. DES. APP. |
|                    |          |                   |                              | MS-1340 F       |