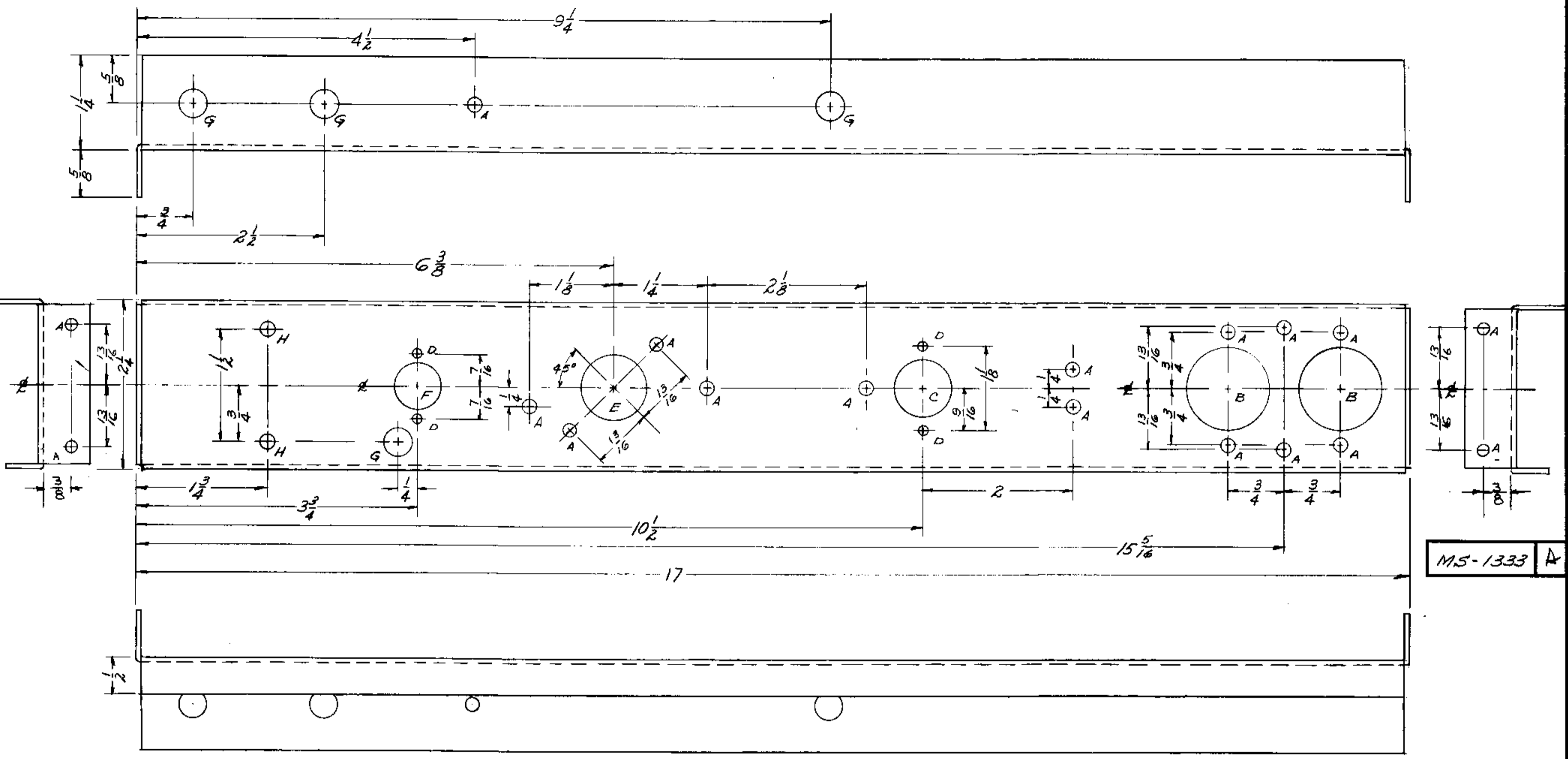


IF IT IS FOUND DESIRABLE TO CHANGE ANY TOLERANCE OR OTHER DETAIL SPECIFIED ON THIS DRAWING NOTIFY THE PURCHASER PROMPTLY.
 MAXIMUM ALLOWABLE TOLERANCES HAVE BEEN DETERMINED AND DEVIATIONS WILL BE CAUSED FOR REJECTION. REMOVE ALL BURRS AND SHARP EDGES



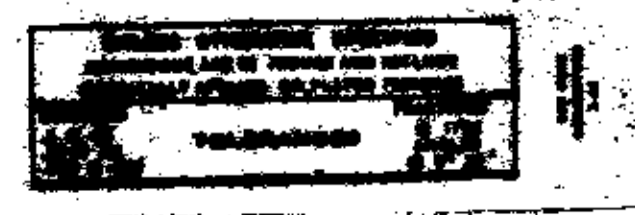
M5-1333 A

HOLE LEGEND

- A - $\frac{1}{64}$ (.171) DIA. HOLE 18 REQ.
- B - $\frac{1}{8}$ DIA. HOLE 1 REQ.
- C - $\frac{3}{4}$ (.750) DIA. HOLE 1 REQ.
- D - $\frac{1}{8}$ (.125) DIA. HOLE 4 REQ.
- E - $\frac{7}{8}$ (.875) DIA. HOLE 1 REQ.
- F - $\frac{5}{8}$ (.625) DIA. HOLE 1 REQ.
- G - $\frac{3}{8}$ (.375) DIA. HOLE 1 REQ.
- H - $\frac{13}{64}$ (.203) DIA. HOLE 2 REQ.

REF: LD-447

A	1	S404-IRIDITE WAS 8101-CAUSTIC DIP	12-9 59	1501	P	EMN
ISSUE ITEM	CHANGED FROM	DATE	CH. NO.	DRAFTS	CHECKER	ENG. APP.
TOLERANCES		SCALE: FULL SIZE				
ALL OTHERS	DEC. DIM. $\pm .005$ FRAC. DIM. $\pm \frac{1}{64}$ ANGULAR DIM. $\pm .05^\circ$	DRILL, PUNCH, COMMERCIAL STOCK SIZES AND MANUFACTURERS TOLERANCES ARE NOT INCLUDED.				



REQ. ITEM	PART NO.	DESCRIPTION	SYMBOL
	.064 THICK	THE TECHNICAL MATERIEL CORP.	
	STOCK SIZE	MAMARONECK, NEW YORK	
ALUMINUM		CHASSIS, MAIN	
MATERIAL	WEIGHT PER PC.	PROTECTIVE CIRCUIT KIT	S394
5052-H32	9/10/50		
TYPE & TEMPER			
HEAT TREAT. SPEC.			
S404-YEL-IRIDITE			
FINISH & SPEC. NO.			

REQ. PER UNIT	MODEL	PROJECT NO.	ASBY. NO.	DATE