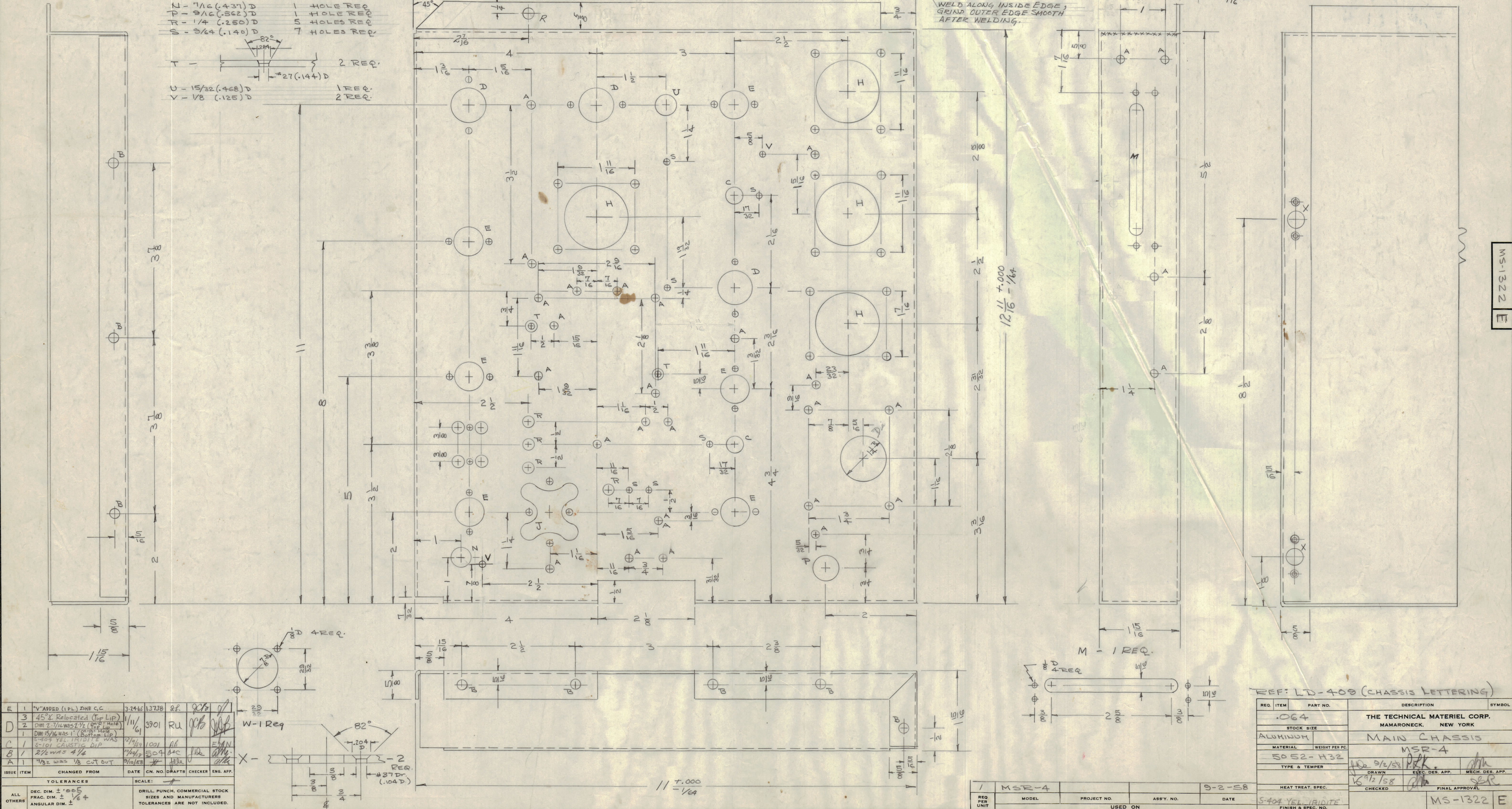
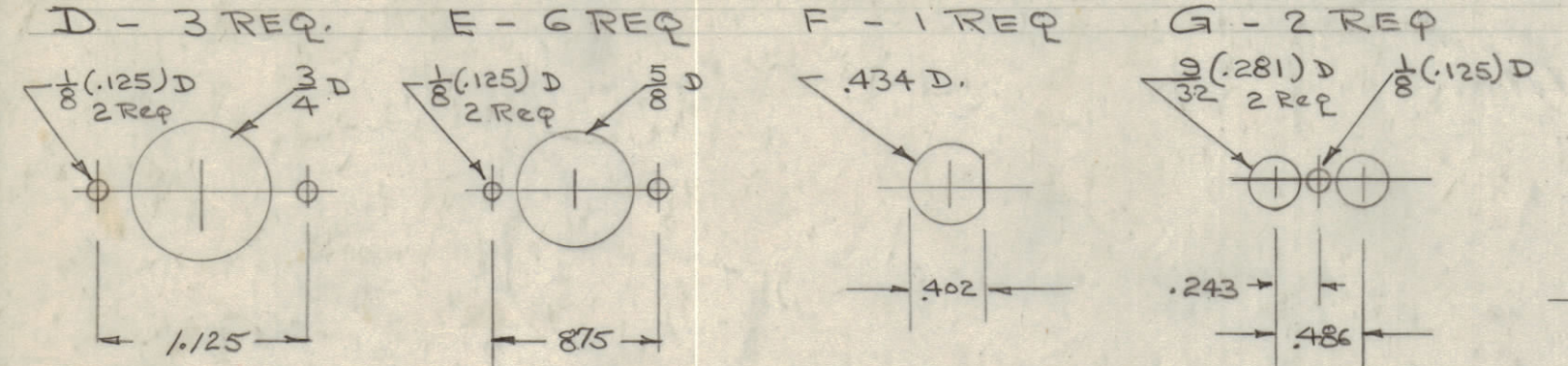


IF IT IS FOUND DESIRABLE TO CHANGE ANY TOLERANCE OR OTHER DETAIL SPECIFIED ON THIS DRAWING NOTIFY THE PURCHASER PROMPTLY.
 MAXIMUM ALLOWABLE TOLERANCES HAVE BEEN DETERMINED AND DEVIATIONS WILL BE CAUSE FOR REJECTION. REMOVE ALL BURRS AND SHARP EDGES.

A - $\frac{11}{16}$ (.171) D 28 HOLES REQ.
 B - $\frac{13}{16}$ (.203) D 12 HOLES REQ.
 C - $\frac{3}{8}$ (.375) D 3 HOLES REQ.



ISSUE	ITEM	CHANGED FROM	DATE	CN. NO.	DRAFTS	CHECKER	ENG. APP.
E	1	"V" ADDED (IPL) ZINC C.C.	3-24-62	13738	28	JKS	JKS
D	3	45° X Relocated (top Lip)	1/11/61	3901	RU	JKS	JKS
D	2	DIM 2-7/16 WAS 2-1/2 (TOP LIP)					
D	1	DIM 15/16 WAS 1" (BOTTOM LIP)					
C	1	5-404 YEL. TRILLI WAS 5-101 GAUSTIC DIP	2/1/58	1001	AB	JKS	EMN
B	1	2-1/2 WAS 4-1/4	7/4/52	504	BAC	JKS	EMN
A	1	7/32 WAS 1/8 CUT OUT	9/10/52			JKS	EMN

SCALE: $\frac{1}{16}$ " = 1"

DRILL PUNCH, COMMERCIAL STOCK SIZES AND MANUFACTURERS TOLERANCES ARE NOT INCLUDED.

REF: LD-409 (CHASSIS LETTERING)

REQ. ITEM	PART NO.	DESCRIPTION	SYMBOL
.064		THE TECHNICAL MATERIEL CORP. MAMARONECK, NEW YORK	
ALUMINUM		MAIN CHASSIS	
5052-H32		MSR-4	
HEAT TREAT. SPEC.			
FINISH & SPEC. NO.			

1 MSR-4

REQ PER UNIT

MODEL PROJECT NO. ASSY. NO. DATE

9-2-58

5-404 YEL. TRILLI

MS-1322 E

MS-1322 E