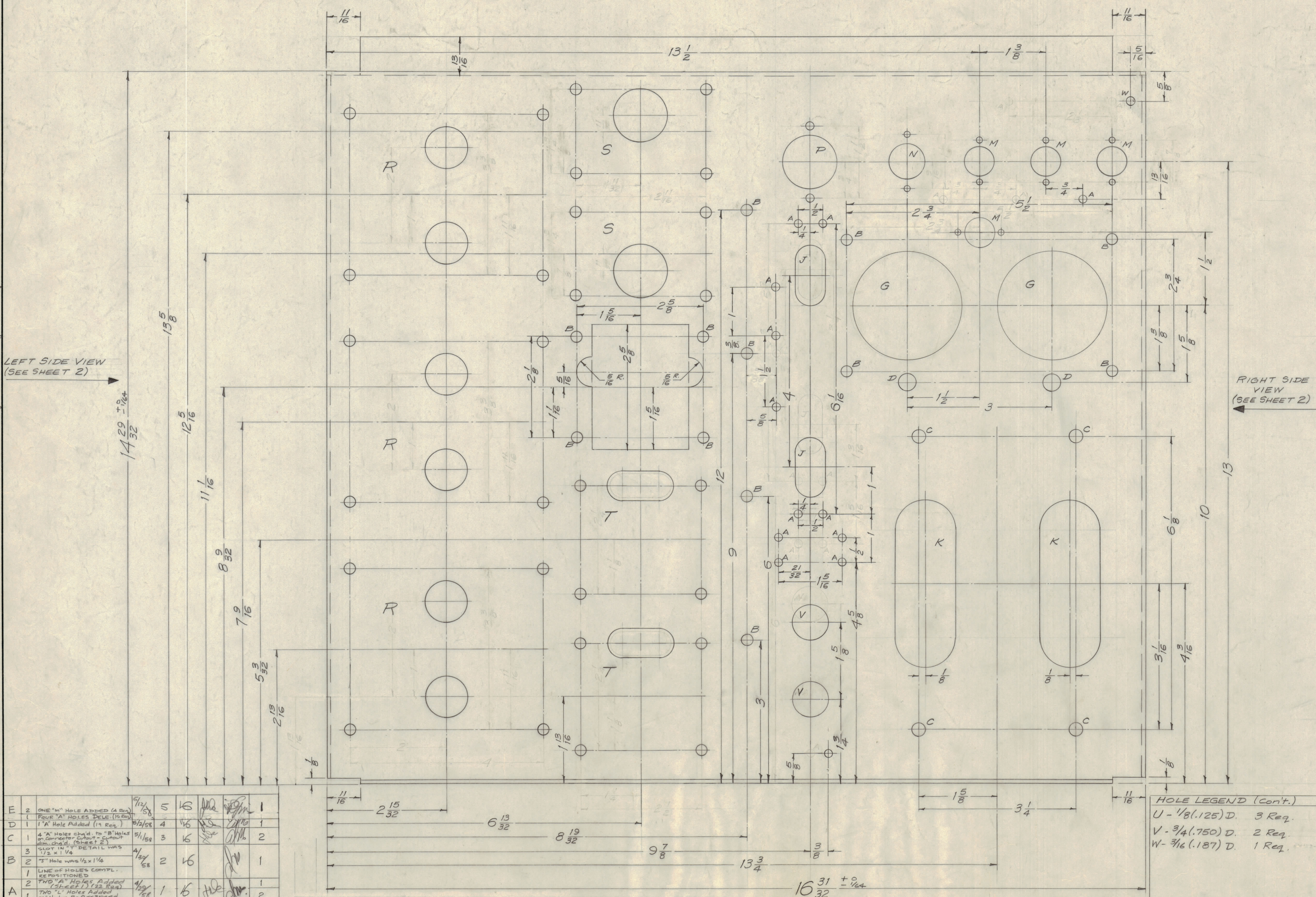
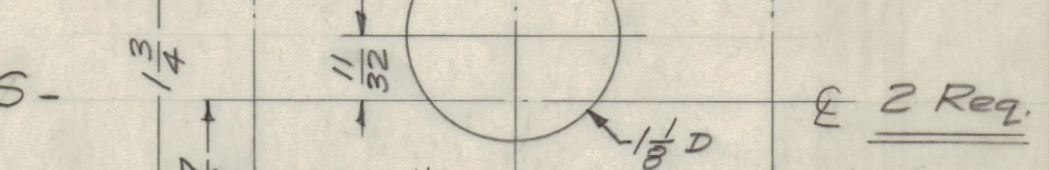
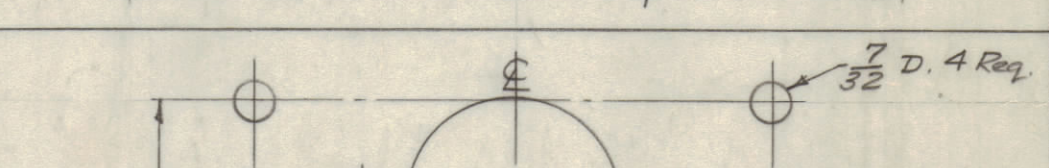
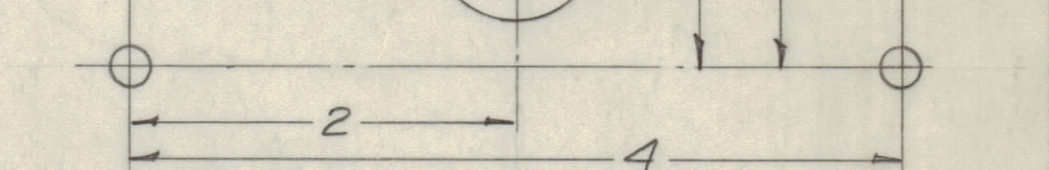
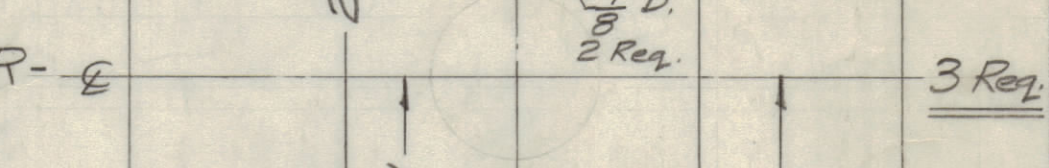
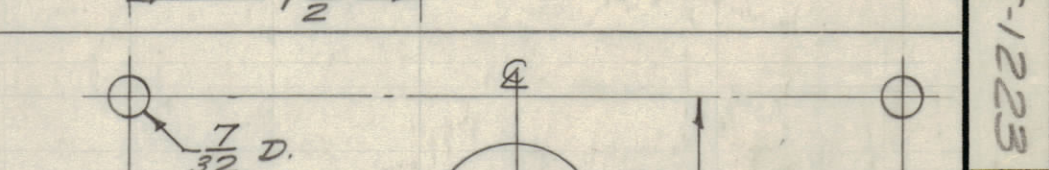
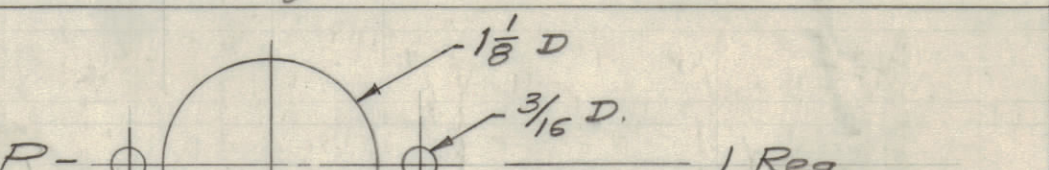
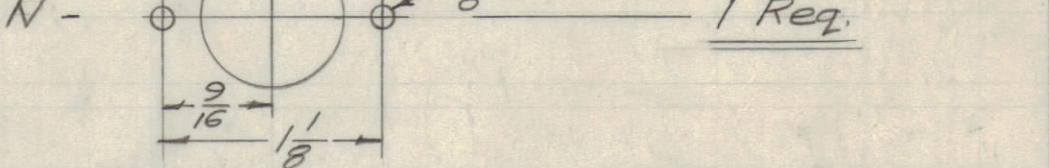
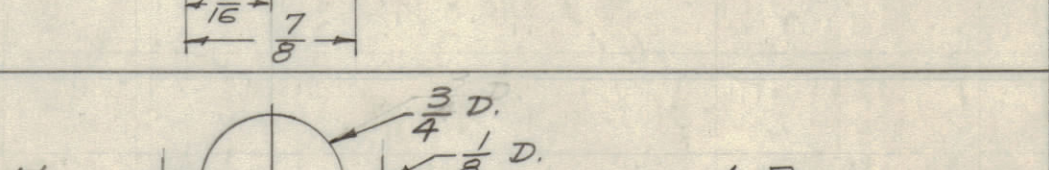
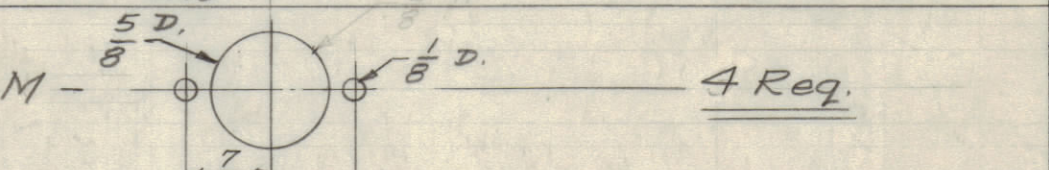
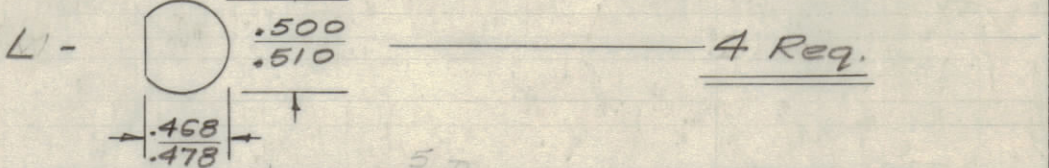


IF IT IS FOUND DESIRABLE TO CHANGE ANY TOLERANCE OR OTHER DETAIL SPECIFIED ON THIS DRAWING NOTIFY THE PURCHASER PROMPTLY.  
 MAXIMUM ALLOWABLE TOLERANCES HAVE BEEN DETERMINED AND DEVIATIONS WILL BE CAUSE FOR REJECTION.  
 REMOVE ALL BURRS AND SHARP EDGES



### HOLE LEGEND

A - 1/64 (.171) D.	15 Req.
B - 7/32 (.218) D.	22 Req.
C - 9/32 (.281) D.	4 Req.
D - 3/8 (.375) D.	2 Req.
E - 13/32 (.406) D.	1 Req.
F - 1-1/32 (1.031) D.	1 Req.
G - 2/4 (2.250) D.	2 Req.
H - 13/64 x 1/32 SLOT	11 Req.
J - 5/8 x 1-1/4 SLOT	2 Req.
K - 1-1/4 x 3-1/2 SLOT	2 Req.



ISSUE	ITEM	CHANGED FROM	DATE	CN. NO.	DRAFTS	CHECKER	ENG. APP.	SHEET NO.
E	2	ONE "A" HOLE ADDED (4 Req.)	5/15/58	5	10	[Signature]	[Signature]	1
D	1	FOUR "A" HOLES DELETED (15 Req.)	5/15/58	4	10	[Signature]	[Signature]	1
C	1	4 "A" HOLES CHANGED TO "B" HOLES ON CONNECTOR CUTOFF - CUTOFF ALLOWED (SEE SHEET 2)	5/15/58	3	15	[Signature]	[Signature]	2
B	3	1/2 x 1/4 SLOT	4/23/58	2	16	[Signature]	[Signature]	1
A	1	LINE OF HOLES COMPL. REPOSITIONED	4/23/58	1	16	[Signature]	[Signature]	2

ISSUE	ITEM	REVISION	DATE	CN. NO.	DRAFT	CHK	APP	SHEET NO.
H	1	S-404 YEL. TRIDITE WAS 3-191 CAUSTIC DIB	7/16/58	1001	16	[Signature]	[Signature]	1#2
G	1	BEAK UP BENT OVER, RESEC. (WAS BENT IN) OVER HOLE	7/16/58	1001	16	[Signature]	[Signature]	1#2
F	1	ONE "A" HOLE MOVED, TWO "A" HOLES ADDED	5/15/58	6	16	[Signature]	[Signature]	1

### HOLE LEGEND (Cont.)

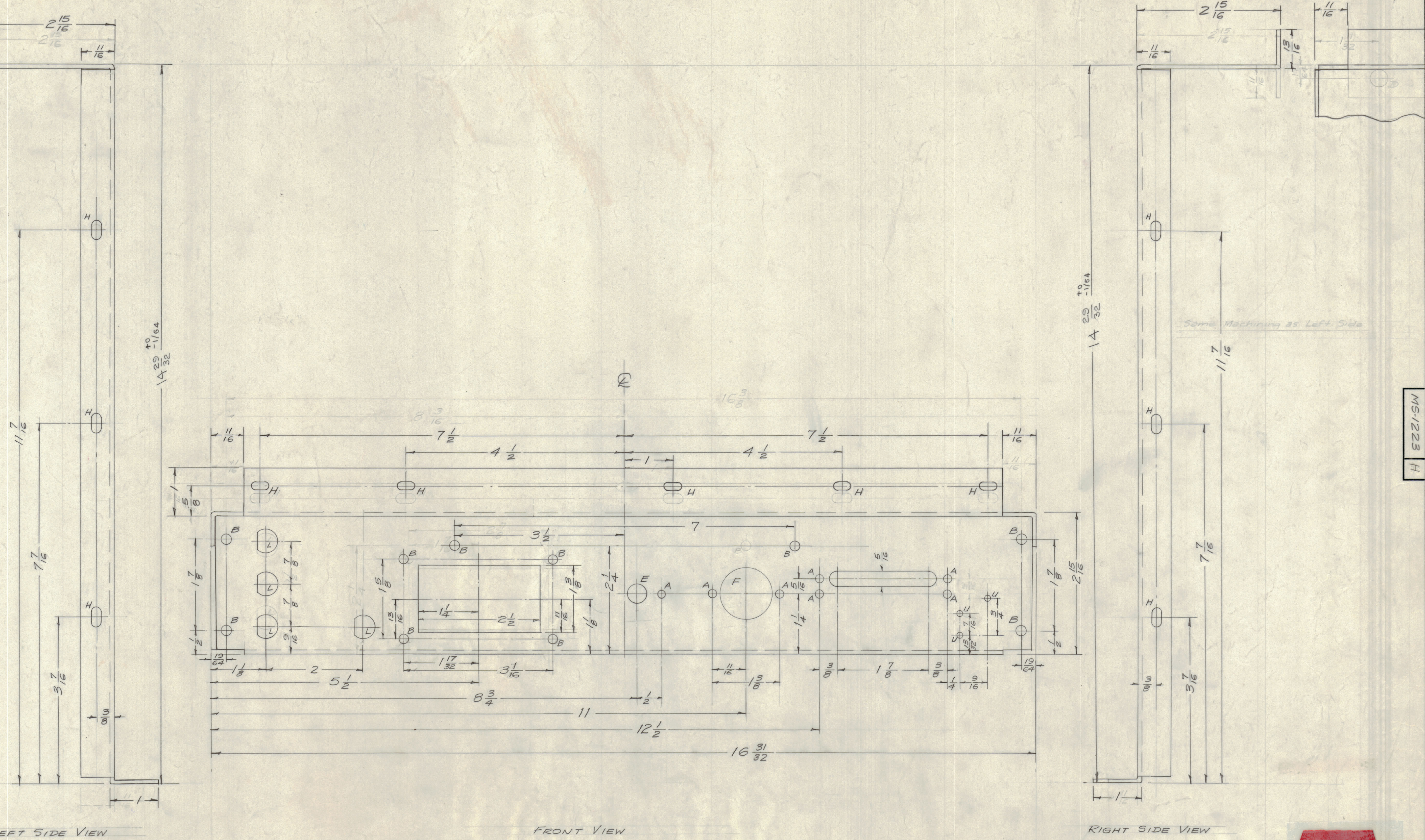
U - 1/8 (.125) D.	3 Req.
V - 3/4 (.750) D.	2 Req.
W - 3/16 (.187) D.	1 Req.

Ref 8LD-396 (Lettering) 2 Sheets

1	PSP-350	PAL-350	4-26-58
REQ PER UNIT	MODEL	PROJECT NO.	DATE
		ASSY. NO.	
		USED ON	

REQ. ITEM	PART NO.	DESCRIPTION	SYMBOL
.081 THK.		THE TECHNICAL MATERIEL CORP.	
STOCK SIZE		MAMARONECK, NEW YORK	
Aluminum ff		CHASSIS, MAIN	
MATERIAL	WEIGHT PER PC		
5052 - H32	464-26-58		
TYPE & TEMPER	DRAWN	ELEC. DES. APP.	MECH. DES. APP.
HEAT TREAT. SPEC.	CHECKED		FINAL APPROVAL
S-404 YEL. TRIDITE			
FINISH & SPEC. NO.	SHEET 1	MS-1223 H	SHEET 1 OF 2

IF IT IS FOUND DESIRABLE TO CHANGE ANY TOLERANCE OR OTHER DETAIL SPECIFIED ON THIS DRAWING NOTIFY THE PURCHASER PROMPTLY.  
 MAXIMUM ALLOWABLE TOLERANCES HAVE BEEN DETERMINED AND DEVIATIONS WILL BE CAUSE FOR REJECTION. REMOVE ALL BURRS AND SHARP EDGES.



LEFT SIDE VIEW

FRONT VIEW

RIGHT SIDE VIEW

**NOTICE TO PERSONS RECEIVING THIS DRAWING**  
 THE TECHNICAL MATERIEL CORPORATION claims proprietary right in the material disclosed herein. This drawing is issued in confidence for engineering information only and may not be reproduced or used to manufacture anything shown hereon without permission from THE TECHNICAL MATERIEL CORPORATION to the user. This drawing is loaned for mutual assistance and is subject to recall at any time.  
 Property of:  
**THE TECHNICAL MATERIEL CORPORATION**  
 MAMARONECK, NEW YORK

SEE SHEET ONE FOR REVISIONS

ISSUE	ITEM	CHANGED FROM	DATE	CN. NO.	DRAFTS	CHECKER	ENG. APP.
TOLERANCES							
SCALE:							
ALL OTHERS	DEC. DIM. $\pm$ 1/64		DRILL PUNCH, COMMERCIAL STOCK SIZES AND MANUFACTURERS TOLERANCES ARE NOT INCLUDED.				

Ref 8LD-396 (Lettering) 2 Sheets

REQ. ITEM	PART NO.	DESCRIPTION	SYMBOL
.081 THK		THE TECHNICAL MATERIEL CORP. MAMARONECK, NEW YORK	
STOCK SIZE			
Aluminum	H	CHASSIS, MAIN	
MATERIAL	WEIGHT PER PC.	(Sheet 2)	
5052-H32	164-26-58		
TYPE & TEMPER	DRAWN	ELEC. DES. APP.	MECH. DES. APP.
H			
HEAT TREAT. SPEC.	CHECKED	FINAL APPROVAL	
S-404 YEL IRIDITE			
FINISH & SPEC. NO.	SHEET 2 MS-1223 H		

1 PSP-350 PAL-350 4-26-58  
 REQ PER UNIT MODEL PROJECT NO. ASS'Y. NO. DATE  
 USED ON

MS-1223 H