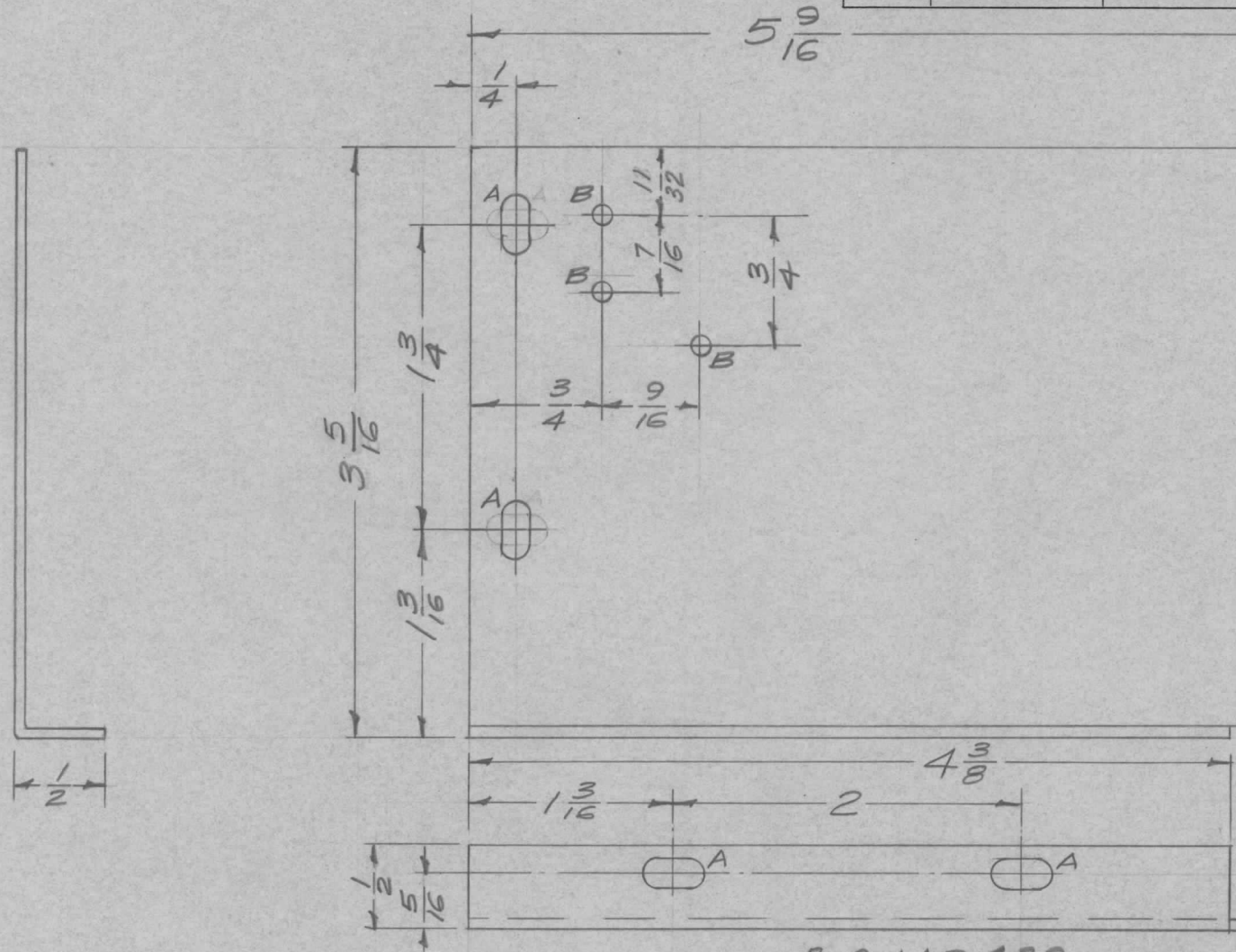


REQ. PER UNIT	USED ON			MS-1256	B
	MODEL	ASS'Y. NO.	DATE		
1	RFA-1		5-12-58		

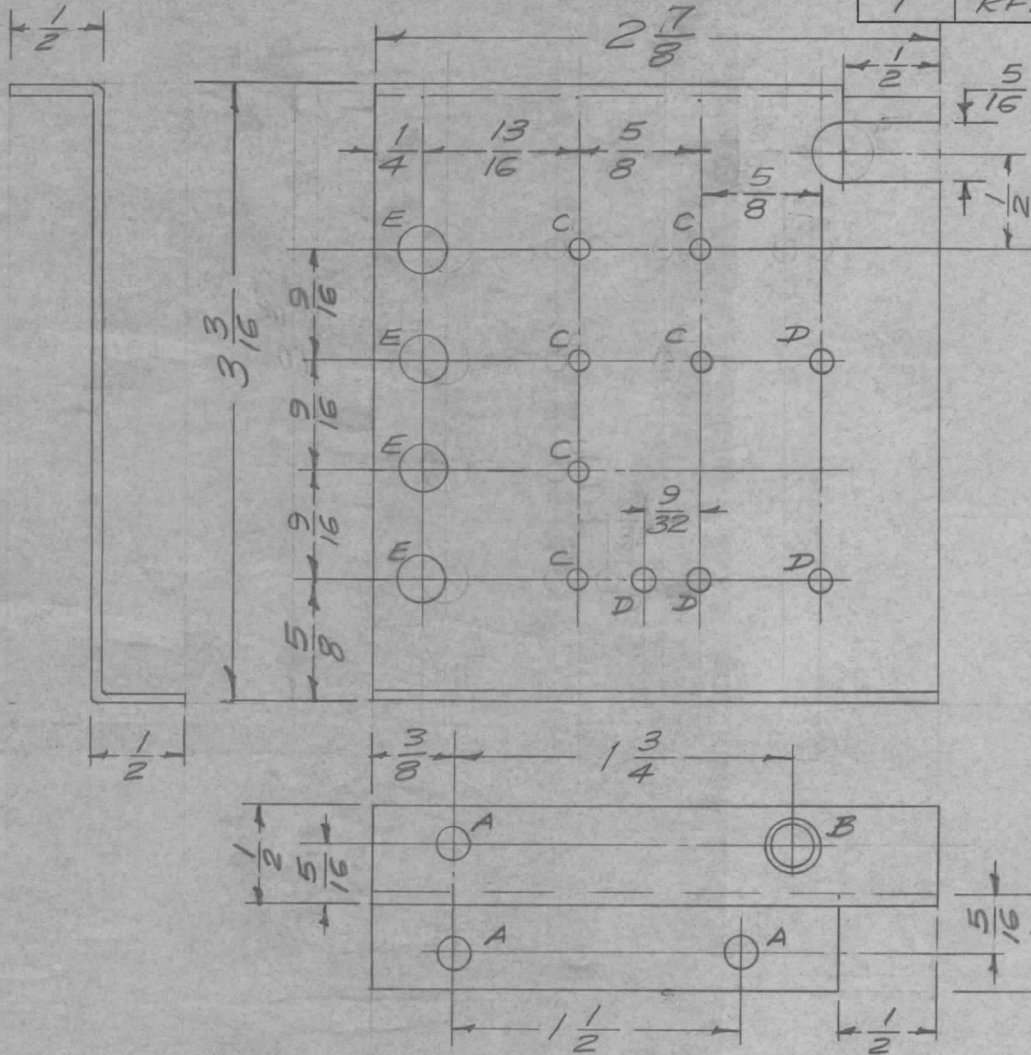


A - 1/64 x 1/32 SLOT 4 Req.  
 B - 1/8 (.125) D. 3 Req.

Ref-1 LD-429

REQ. ITEM	PART NO.	DESCRIPTION	SYMBOL
B 1	5404-Y-IRIDITE WAS 5101 CAUSTIC DIP	THE TECHNICAL MATERIEL CORP. MAMARONECK, NEW YORK	
A 1	3-5/16 DIA WAS 3-3/8 1/32 WAS 13/32 TWO SLOTS TURNED 90°	SHIELD, FIL. TRANSFORMER	
ISSUE ITEM	CHANGED FROM	DATE	CH. NO. DRAFTS CHECKER ENG. APP.
TOLERANCES		SCALE: FULL	
DEC. DIM. ±	MAXIMUM ALLOWABLE TOLERANCES HAVE BEEN DETERMINED AND ANY DEVIATIONS WILL BE CAUSE FOR REJECTION.		
FRAC. DIM. ± 1/64	REMOVE ALL BURRS AND SHARP EDGES		
ANGULAR DIM. ±			
5052-H32	— 11 —	6 5/12/58	JHE AHW
5404-YEL-IRIDITE		DRAWN	CHECKED
FINISH & SPEC. NO.	ELEC. DES. APP.	MECH. DES. APP.	MS-1256 B

REQ. PER UNIT 1	USED ON			MS-1257	C
	MODEL RFA-1	ASS'Y. NO.	DATE 5-12-58		



A -  $\frac{1}{64}$  (.171) D. 3 Req.

B - 1 Req.

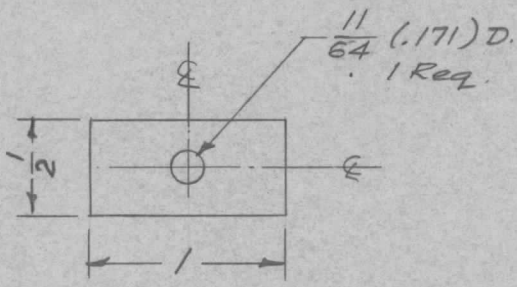
Mount SM-111-D-206 in "B" Hole as shown

C -  $\frac{7}{64}$  (.109) D. 6 Req.  
 D -  $\frac{1}{8}$  (.125) D. 4 Req.  
 E -  $\frac{1}{4}$  (.250) D. 4 Req.

Ref-2LD-430

REQ.	ITEM	PART NO.	DESCRIPTION				SYMBOL	
C	1	S-404 WAS S-101	12/15/59	1001	AB	EMN	<b>THE TECHNICAL MATERIEL CORP.</b> MAMARONECK, NEW YORK SHIELD, SIDE, FIL. TRANSFORMER	
B	1	DA 2-7/8 WAS 2-15/16 "D" Hole Moved 3/8 WAS "D" Hole Added 7/16	7/1/58	404	16	<i>[Signature]</i>		
A	1	"F" Hole Added.	4/6/58	1	16	<i>[Signature]</i>		
ISSUE	ITEM	CHANGED FROM	DATE	CH. NO.	DRAFTS	CHECKER	ENG. APP.	
TOLERANCES			SCALE: FULL					
DEC. DIM. $\pm$			MAXIMUM ALLOWABLE TOLERANCES HAVE BEEN DETERMINED AND ANY DEVIATIONS WILL BE CAUSE FOR REJECTION. REMOVE ALL BURRS AND SHARP EDGES					
FRAC. DIM. $\pm$ $\frac{1}{64}$								
ANGULAR DIM. $\pm$								
5052-H32		HEAT TREAT. SPEC.		DRAWN		CHECKED	FINAL APPROVAL	
S-404 YELLOW IRIDITE						<i>RFB</i>	MS-1257	
FINISH & SPEC. NO.		ELEC. DES. APP.		MECH. DES. APP.			C	

REQ. PER UNIT 2	USED ON			MS-1258	A
	MODEL RFA-1	ASS'Y. NO.	DATE 5-12-58		

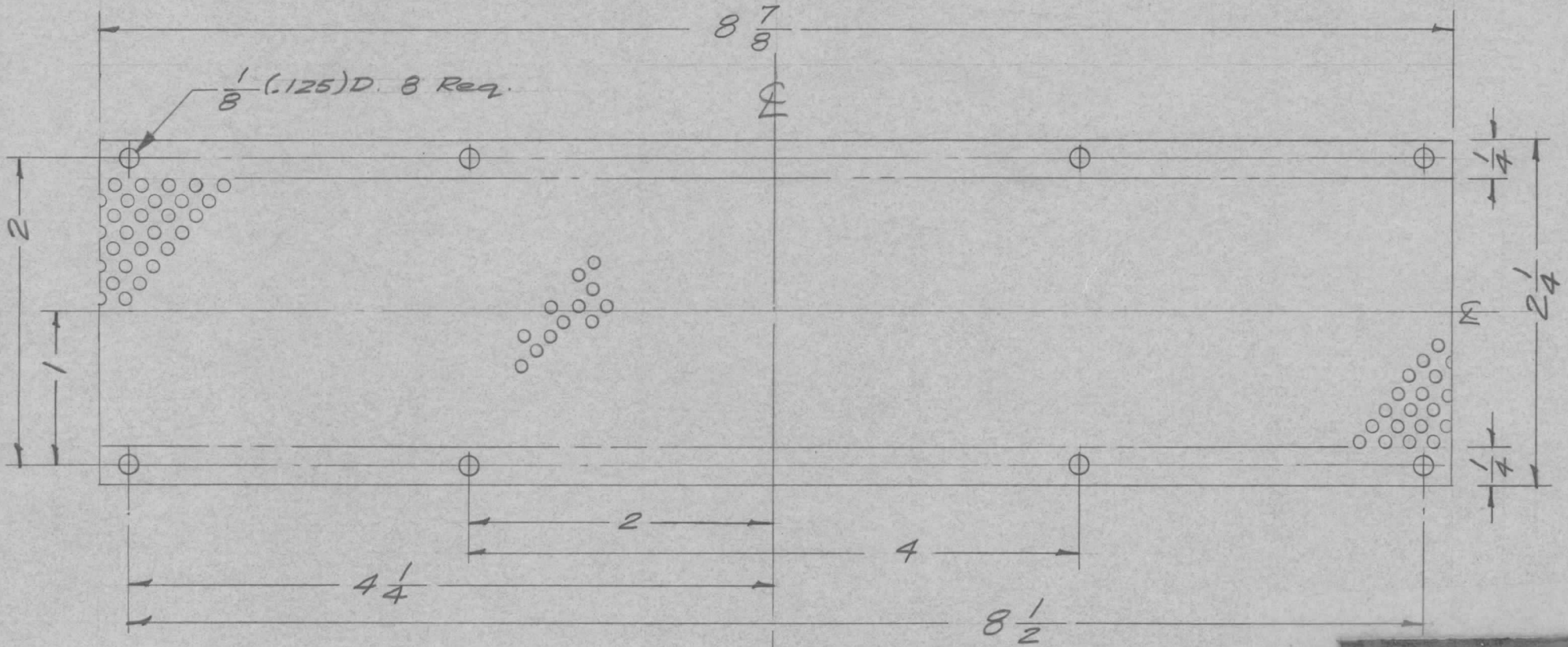


REQ.	ITEM	PART NO.	DESCRIPTION				SYMBOL
		3/16 THK.	THE TECHNICAL MATERIEL CORP.				
		STOCK SIZE	MAMARONECK, NEW YORK				
A	1	ALUMINUM	SPACER, CAPACITOR				
		MATERIAL					
ISSUE	ITEM	CHANGED FROM	DATE	CH. NO.	DRAFTS	CHECKER	ENG. APP.
		5404 - Y-IRIDITE W/3 5101 - CAUSTIC DIP	12-8 59	1001	P		EMH
TOLERANCES			SCALE: FULL				
DEC. DIM. ±			MAXIMUM ALLOWABLE TOLERANCES HAVE BEEN DETERMINED AND ANY DEVIATIONS WILL BE CAUSE FOR REJECTION. REMOVE ALL BURRS AND SHARP EDGES				
FRAC. DIM. ±1/64							
ANGULAR DIM. ±							
2024-T3		HEAT TREAT. SPEC.	16 5/12/58	DRAWN		CHECKED	FINAL APPROVAL
S404-YEL. IRIDITE		FINISH & SPEC. NO.	RFB	ELEC. DES. APP.		MECH. DES. APP.	
							MS-1258
							A



REQ. PER UNIT	USED ON			MS-1260	A
	MODEL	ASS'Y. NO.	DATE		
1	RFA-1		5-13-58		

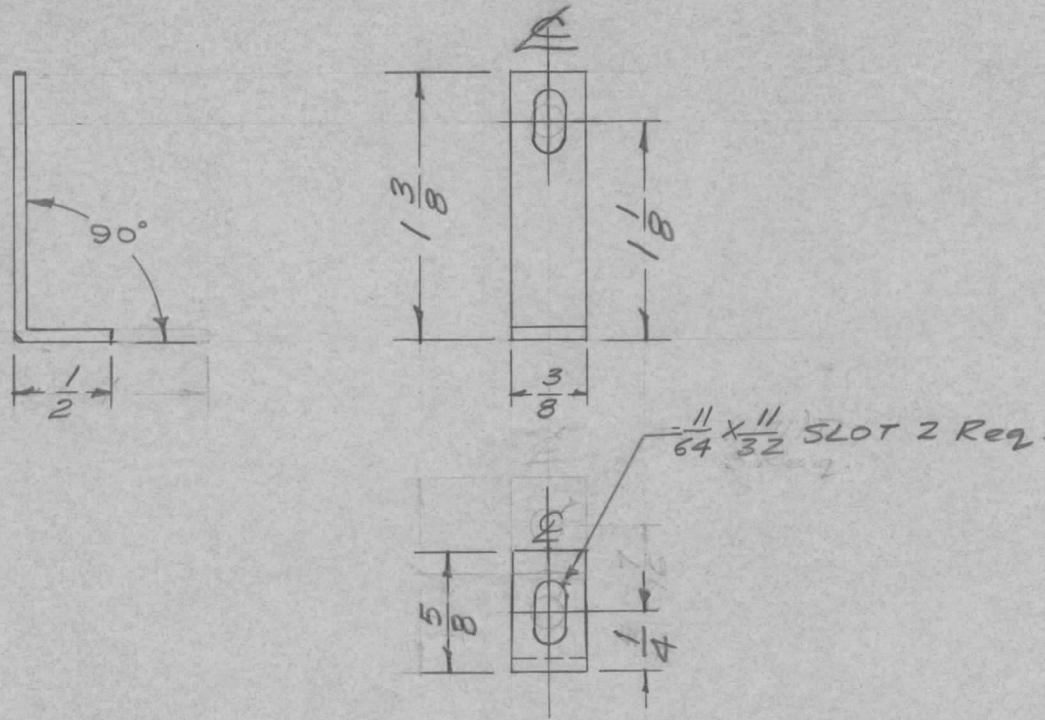
Perforation - .072 D. Holes on 1/8 Centers



Ref. MS-973-1 B 8.87 (Blank Size)

REQ. ITEM	PART NO.	DESCRIPTION			SYMBOL	
	.051 THK	THE TECHNICAL MATERIEL CORP.				
	STOCK SIZE	MAMARONECK, NEW YORK				
A 1	Aluminum	VENT, RIGHT SIDE, WRAPAROUND				
	MATERIAL					
ISSUE ITEM	CHANGED FROM	DATE	CH. NO.	DRAFTS	CHECKER	ENG. APP.
		11-8	1001	P		EMN
TOLERANCES		SCALE: FULL				
DEC. DIM. ±		MAXIMUM ALLOWABLE TOLERANCES HAVE BEEN DETERMINED AND ANY DEVIATIONS WILL BE CAUSE FOR REJECTION. REMOVE ALL BURRS AND SHARP EDGES				
FRAC. DIM. ± 1/64						
ANGULAR DIM. ±						
5052-H32		#	16 5/13/58	Jase	almo	
TYPE & TEMPER		HEAT TREAT. SPEC.	DRAWN	CHECKED	FINAL APPROVAL	
5404-Y-IRIDITE				ZFTB	MS-1260 A	
FINISH & SPEC. NO.		ELEC. DES. APP.	MECH. DES. APP.			

REQ. PER UNIT	USED ON			MS-1261	B
	MODEL	ASS'Y. NO.	DATE		
1	RFA-1		5-17-58		

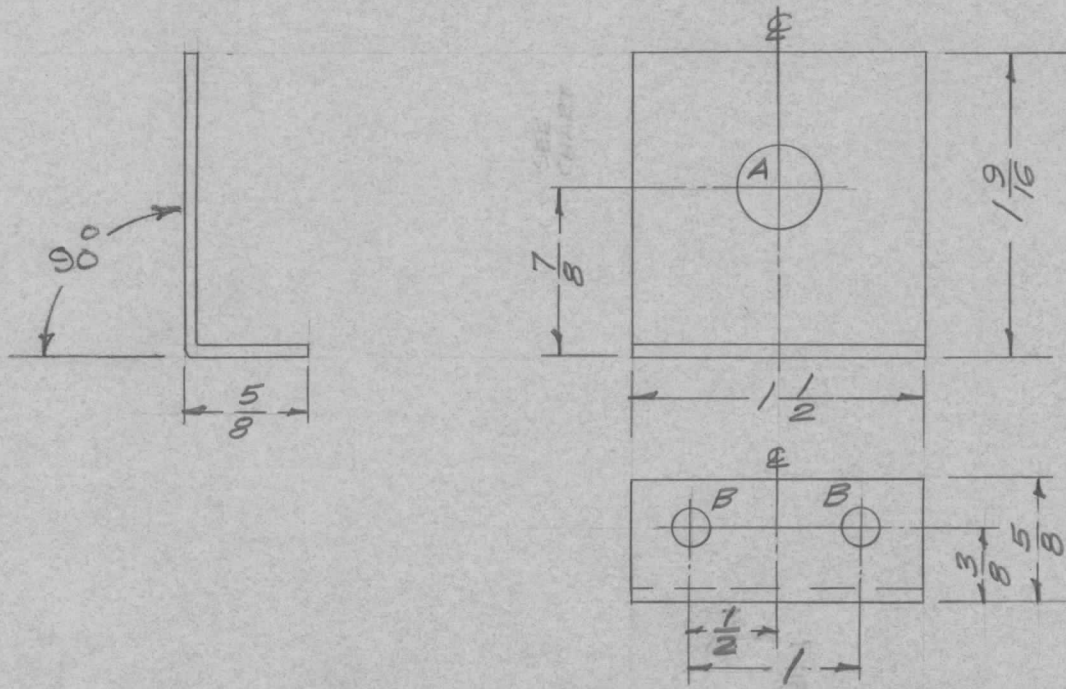


REQ.	ITEM	PART NO.	DESCRIPTION				SYMBOL
		.064 THK.	THE TECHNICAL MATERIEL CORP.				
		STOCK SIZE	MAMARONECK, NEW YORK				
B	1	5404-Y-IRIDITE	BRACKET, PA COIL				
		5101 CAUSTIC DIP					
A	1	5/8 WAS 1/2					
		Hole was 11/64 D.					
ISSUE	ITEM	CHANGED FROM	DATE	CH. NO.	DRAFTS	CHECKER	ENG. APP.
			12-8	1001	P		EMN
			7/1/58	404	16	Hole	AM
TOLERANCES			SCALE: FULL				
DEC. DIM. ±			MAXIMUM ALLOWABLE TOLERANCES HAVE BEEN DETERMINED AND ANY DEVIATIONS WILL BE CAUSE FOR REJECTION.				
FRAC. DIM. ± 1/64			REMOVE ALL BURRS AND SHARP EDGES				
ANGULAR DIM. ± .5°							
5052-H32		16 5/17/58		HQ		AP	
TYPE & TEMPER		HEAT TREAT. SPEC.		DRAWN		CHECKED	
5404-Y-EL-IRIDITE				RFB		MS-1261	
FINISH & SPEC. NO.		ELEC. DES. APP.		MECH. DES. APP.		B	

REQ. PER UNIT	USED ON			MS-1262	B
	MODEL	ASS'Y. NO.	DATE		
1	RFA-1		5-16-58		

A - 7/16 (.437) D. 1 Req.

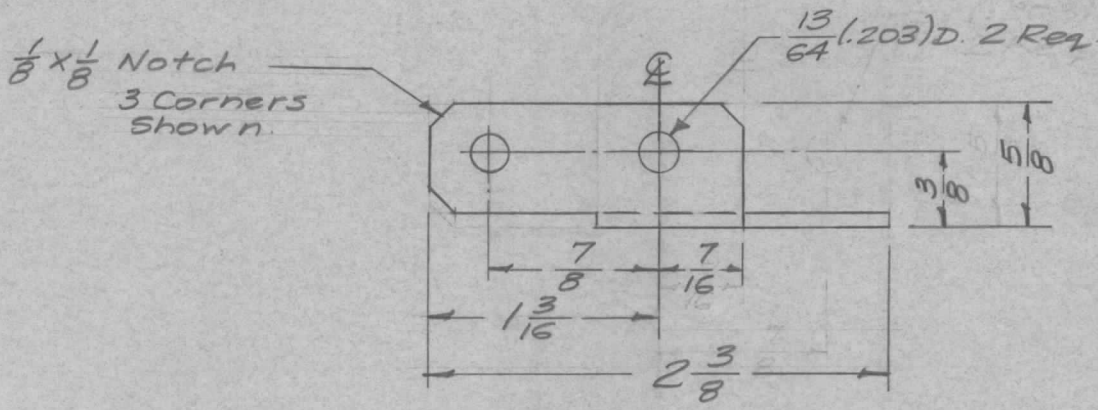
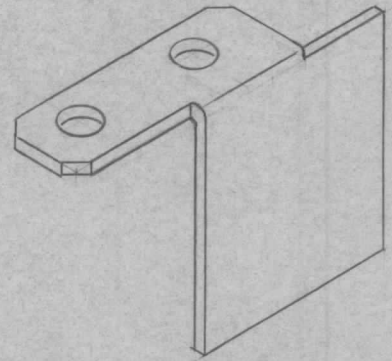
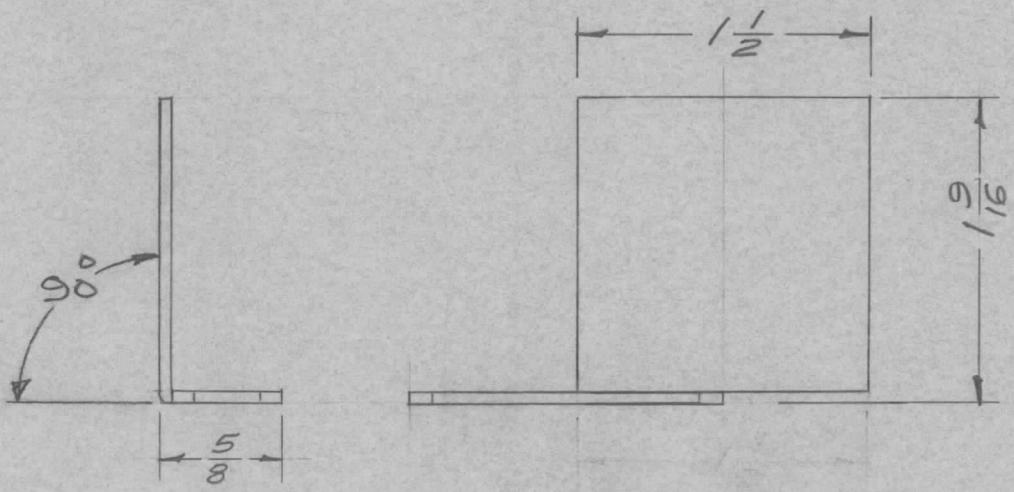
B - 13/64 D. 2 Req.




REQ. PER UNIT	TMC NO.	A. HOLE
1		7/16 D.
1		NONE

ISSUE	ITEM	CHANGED FROM	DATE	CH. NO.	DRAFTS	CHECKER	ENG. APP.	REQ. ITEM	PART NO.	DESCRIPTION	SYMBOL						
B	1	5404 - YALRIDITE WAS 5101 - CAUSTIC DIP	12-8 59	1001	P		EMN	.064 THK. STOCK SIZE		THE TECHNICAL MATERIEL CORP. MAMARONECK, NEW YORK							
A	1	1/2-1 WAS 7/16-7/8	7/1/58	404	16	Jude	[Signature]	Aluminum		BRACKET, MOUNTING, NEUTRALIZING CAPACITOR							
TOLERANCES								5052-H32									
SCALE: FULL								TYPE & TEMPER		HEAT TREAT. SPEC.		DRAWN		CHECKED		FINAL APPROVAL	
DEC. DIM. ±								5404 YEL-IRIDITE				RFB		MS-1262		B	
FRAC. DIM. ± 1/64								FINISH & SPEC. NO.		ELEC. DES. APP.		MECH. DES. APP.					
ANGULAR DIM. ± 1/2°																	
MAXIMUM ALLOWABLE TOLERANCES HAVE BEEN DETERMINED AND ANY DEVIATIONS WILL BE CAUSE FOR REJECTION.																	
REMOVE ALL BURRS AND SHARP EDGES																	

REQ. PER UNIT	USED ON			MS-1263	B
	MODEL	ASS'Y. NO.	DATE		
			5-17-58		

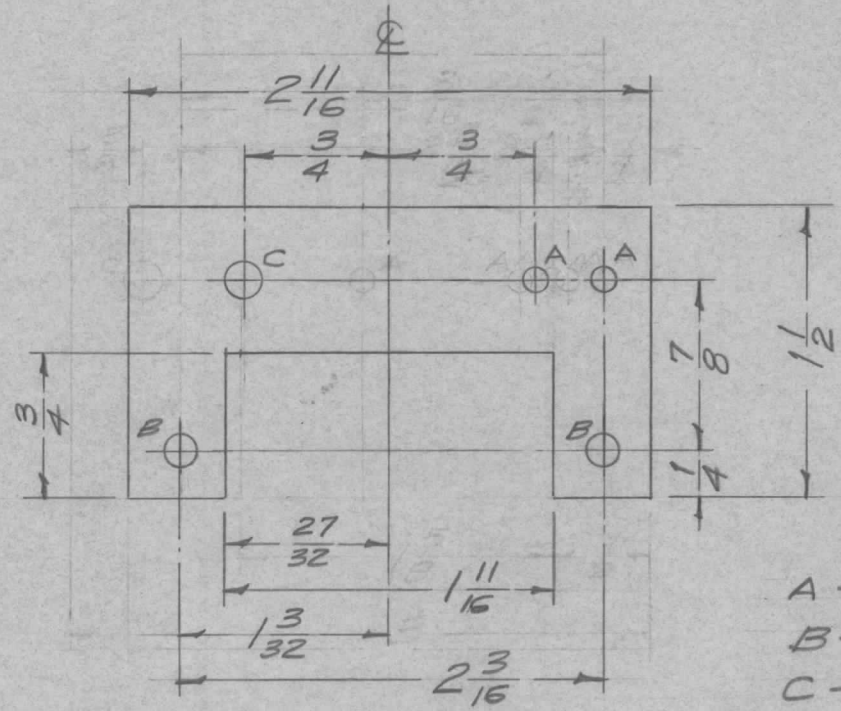


Deleted from RFA-1 5-27-58 - Replaced by MS-1272

ISSUE ITEM	CHANGED FROM	DATE	CH. NO.	DRAFTS	CHECKER	ENG. APP.	REQ. ITEM	PART NO.	DESCRIPTION	SYMBOL		
									THE TECHNICAL MATERIEL CORP. MAMARONECK, NEW YORK			
B 1	5404 Y-IRIDITE WAS S101-CAUSTIC DIP	12-8 59	100	P		ETAN		.064 THK. STOCK SIZE	PLATE, FIXED,			
A 1	COMPLETE REVISION (WAS  )	5/21/58	1	file		AK		ALUMINUM MATERIAL	NEUTRALIZING CAPACITOR			
TOLERANCES		SCALE: FULL						5052-H32	16 5/17/58	file	AK	
DEC. DIM. ±		MAXIMUM ALLOWABLE TOLERANCES HAVE BEEN DETERMINED AND ANY DEVIATIONS WILL BE CAUSE FOR REJECTION. REMOVE ALL BURRS AND SHARP EDGES						TYPE & TEMPER	HEAT TREAT. SPEC.	DRAWN	CHECKED	FINAL APPROVAL
FRAC. DIM. ± 1/64												5404 Y-EL. IRIDITE
ANGULAR DIM. ± 1/2°							FINISH & SPEC. NO.	ELEC. DES. APP.	MECH. DES. APP.		B	



REQ. PER UNIT	USED ON			MS-1264	B
	MODEL	ASS'Y. NO.	DATE		
1	RFA-1		5-16-58		

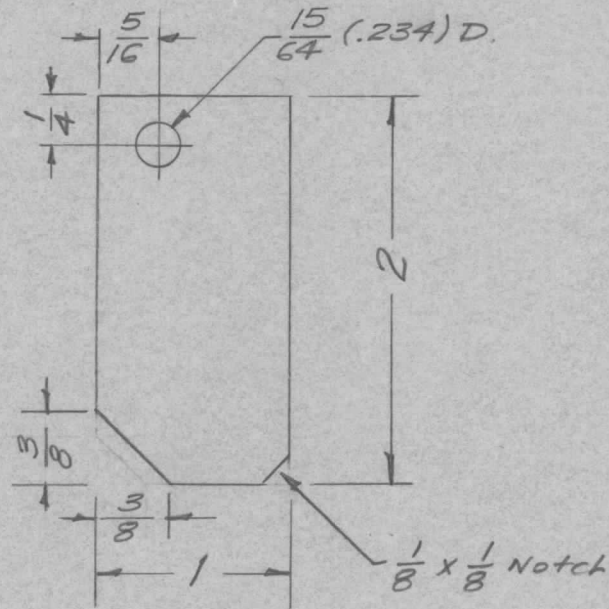


A -  $\frac{1}{8}$ (.125) D. 2 Req.  
 B -  $\frac{1}{4}$ (.171) D. 2 Req.  
 C -  $\frac{13}{64}$ (.203) D. 1 Req.

Ref - LD-431 (1)

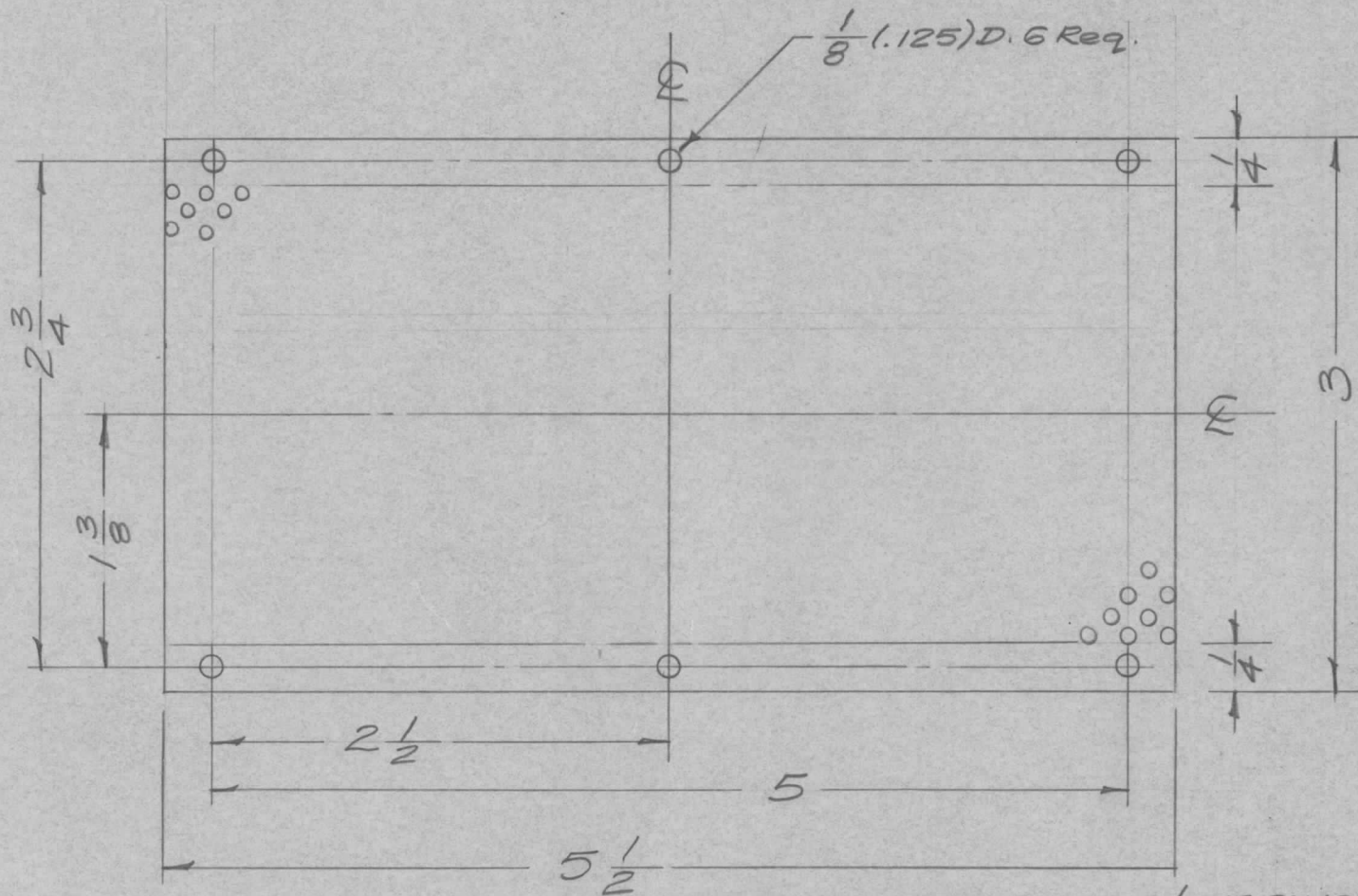
ISSUE	ITEM	CHANGED FROM	DATE	CH. NO.	DRAFTS	CHECKER	ENG. APP.	REQ. ITEM	PART NO.	DESCRIPTION	SYMBOL			
										THE TECHNICAL MATERIEL CORP. MAMARONECK. NEW YORK PLATE, CAPACITOR MTG.				
									.064 THK. STOCK SIZE					
									ALUMINUM					
									MATERIAL					
B	1	S404-YEL/IRIDITE - WAS S101 CAUSTIC DIP	12-8-59	1001	✓		EMN	5052-H32		16 5/16/58	<i>[Signature]</i>			
A	1	Compl. Rev. WAS 3 Long Holes Moved - Cutout chgd.	5/24/58	1	16	RFB	<i>[Signature]</i>							
TOLERANCES			SCALE: FULL					TYPE & TEMPER		HEAT TREAT. SPEC.	DRAWN	CHECKED	FINAL APPROVAL	
DEC. DIM. ±			MAXIMUM ALLOWABLE TOLERANCES HAVE BEEN DETERMINED AND ANY DEVIATIONS WILL BE CAUSE FOR REJECTION. REMOVE ALL BURRS AND SHARP EDGES					S404-YEL-IRIDITE				RFB	MS-1264	B
FRAC. DIM. ± 1/64								FINISH & SPEC. NO.		ELEC. DES. APP.	MECH. DES. APP.			
ANGULAR DIM. ±														

REQ. PER UNIT	USED ON			MS-1265	B
	MODEL	ASS'Y. NO.	DATE		
1	RFA-1		5-17-58		



REQ.	ITEM	PART NO.	DESCRIPTION				SYMBOL
		.081 THK.	THE TECHNICAL MATERIEL CORP.				
		STOCK SIZE	MAMARONECK. NEW YORK				
B	1	5404-YEL IRIDITE WAS 5101-CAUSTIC DIP	12-B 59	1001	P	EMN	PLATE, CONNECTOR LOCKING
A	1	1/8 x 1/8 Notch Added	7/1/58	404	16	file	
ISSUE	ITEM	CHANGED FROM	DATE	CH. NO.	DRAFTS	CHECKER	ENG. APP.
TOLERANCES			SCALE: FULL				
DEC. DIM. ±			MAXIMUM ALLOWABLE TOLERANCES HAVE				
FRAC. DIM. ± 1/64			BEEN DETERMINED AND ANY DEVIATIONS				
ANGULAR DIM. ±			WILL BE CAUSE FOR REJECTION.				
			REMOVE ALL BURRS AND SHARP EDGES				
		5052-H32	16 5/17/58				
TYPE & TEMPER		HEAT TREAT. SPEC.	DRAWN	CHECKED	FINAL APPROVAL		
5404-YEL IRIDITE				RFB	MS-1265 B		
FINISH & SPEC. NO.		ELEC. DES. APP.	MECH. DES. APP.				

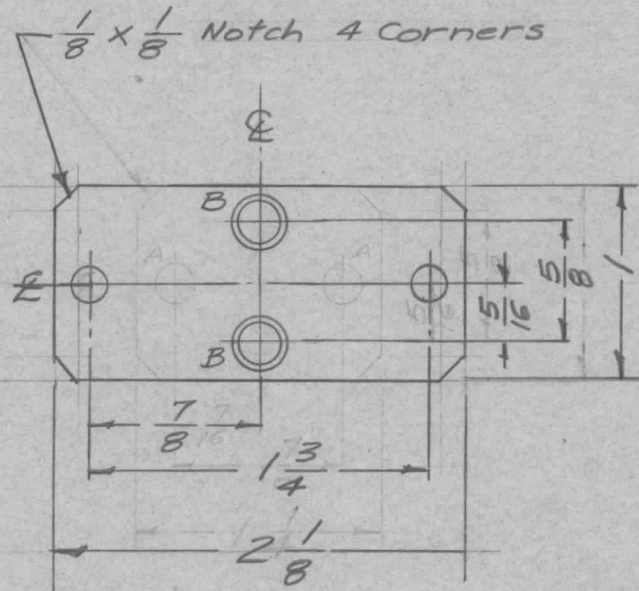
REQ. PER UNIT	USED ON			MS-1268 A
	MODEL	ASS'Y. NO.	DATE	
1	FEAR		5-21-58	



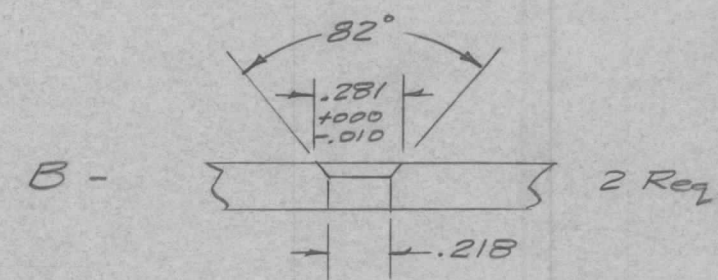
Deleted from RFA-1 5-21-58 (USE SN-101 & MS-1274)  
 USE MS-973-2B5.00 (Blank Size)

REQ. ITEM	PART NO.	DESCRIPTION	SYMBOL			
	.051	THE TECHNICAL MATERIEL CORP. MAMARONECK, NEW YORK				
	STOCK SIZE					
A 1	5404-VEL-IRIDITE WAS S101-CAUSTIC DIP	VENT, TOP COVER				
ISSUE ITEM	CHANGED FROM	DATE	CH. NO.	DRAFTS	CHECKER	ENG. APP.
		12-8 59	1001	P		EMN
TOLERANCES		SCALE: FULL				
DEC. DIM. $\pm$		MAXIMUM ALLOWABLE TOLERANCES HAVE BEEN DETERMINED AND ANY DEVIATIONS WILL BE CAUSE FOR REJECTION. REMOVE ALL BURRS AND SHARP EDGES				
FRAC. DIM. $\pm$ 1/64						
ANGULAR DIM. $\pm$						
5052-H32		16 5/21/58	JME	JME		
TYPE & TEMPER		HEAT TREAT. SPEC.	DRAWN	CHECKED	FINAL APPROVAL	
S404VEL IRIDITE			RFB	MS-1268 A		
FINISH & SPEC. NO.		ELEC. DES. APP.	MECH. DES. APP.			

REQ. PER UNIT	USED ON			MS-1270	B
	MODEL	ASS'Y. NO.	DATE		
1	RFA-1		5-21-58		



A -  $1\frac{3}{64}$  (.203) D. 2 Req.

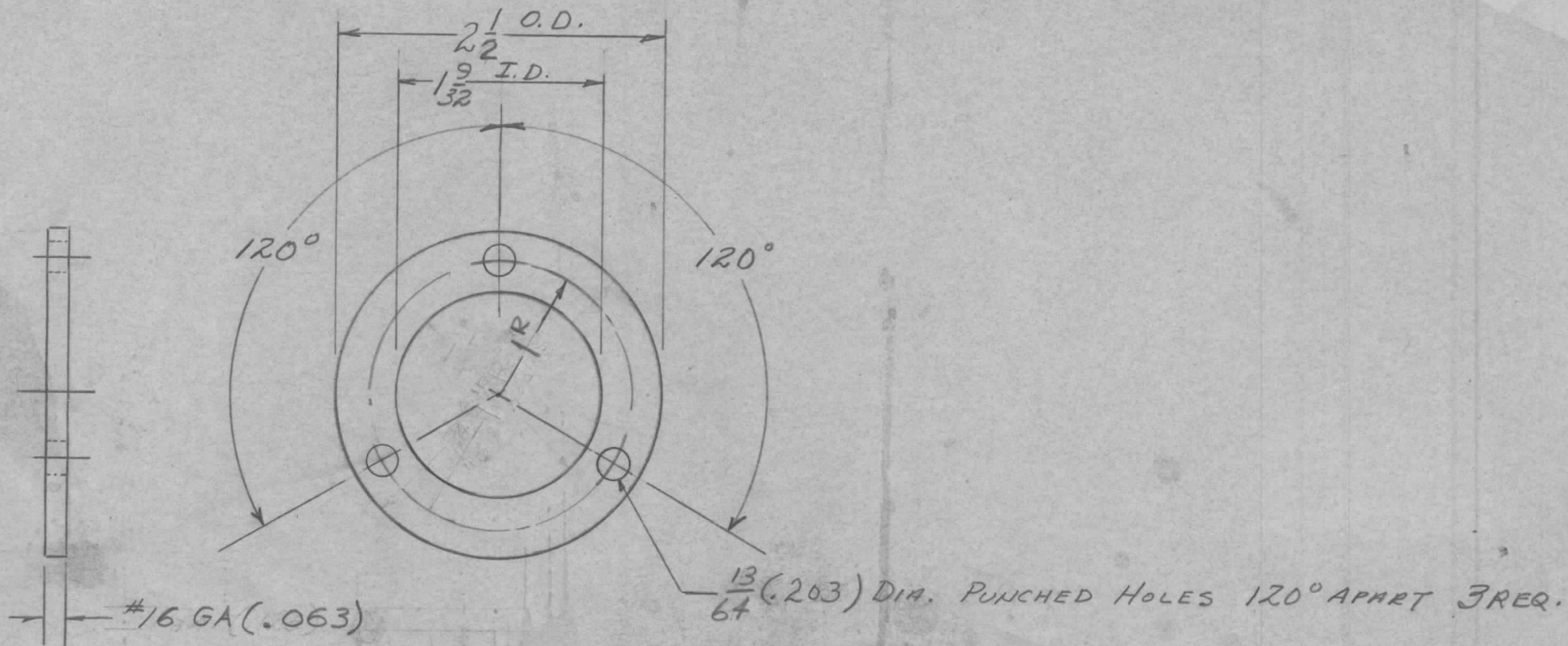


Mount SM-111-D-206 in "B" Holes as Shown

REQ. ITEM	PART NO.	DESCRIPTION	SYMBOL
B 1	5404-Y-IRIDITE WAS S101-CAUSTIC DIP	THE TECHNICAL MATERIEL CORP. MAMARONECK, NEW YORK	
A 1	2-1/8 WAS 1-1/4 7/8, 1-3/4 WAS 7/16, 7/8	PLATE, TUBE CLAMP MOUNTING	
ISSUE	ITEM	CHANGED FROM	DATE CH. NO. DRAFTS CHECKER ENG. APP.
TOLERANCES		SCALE: FULL	
DEC. DIM. $\pm$		MAXIMUM ALLOWABLE TOLERANCES HAVE BEEN DETERMINED AND ANY DEVIATIONS WILL BE CAUSE FOR REJECTION.	
FRAC. DIM. $\pm$ 1/64		REMOVE ALL BURRS AND SHARP EDGES	
ANGULAR DIM. $\pm$			
5052-H32		16 5/21/58	FILE
TYPE & TEMPER		HEAT TREAT. SPEC.	DRAWN CHECKED
5404-1/62 IRIDITE			FILE
FINISH & SPEC. NO.		ELEC. DES. APP.	MECH. DES. APP.
			MS-1270 B

REQ. PER UNIT	USED ON		
	MODEL	ASS'Y. NO.	DATE
1	A-1486		5-27-58

MS-1271



NOTE: MAT'L COLD ROLLED S.S. SHEET TYPE 302  
PICKLED & ANNEALED - #16 GA. (.063) SHEAR 2 3/4" WIDE.

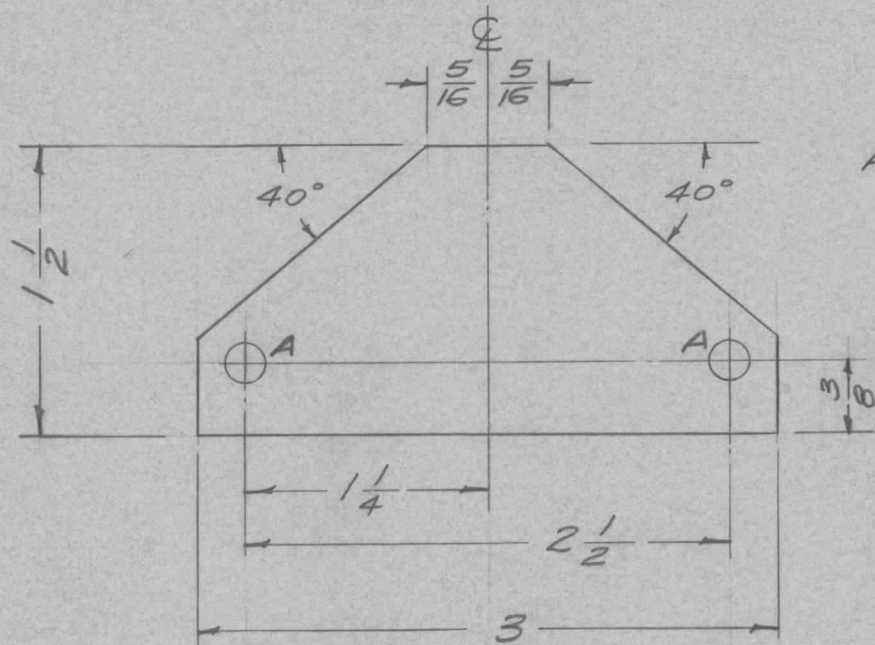
REF: PREMAX # RA-1185.

UNLESS OTHERWISE SPECIFIED DIMENSIONS ARE IN INCHES AND INCLUDE CHEMICALLY APPLIED OR PLATED FINISHES	
DECIMALS	FRACTIONS
.X ± .05	± 1/64
.XX ± .01	ANGLES
.XXX ± .005	± 0° 30'

CUT HERE  
GUARANTEED  
2-66

ISSUE	ITEM	CHANGED FROM	DATE	CH. NO.	DRAFTS	CHECKER	ENG. APP.	REQ. ITEM	PART NO.	DESCRIPTION	SYMBOL	
C	2	DIMS REVISED; TITLE CLARIFIED	2-19-62	6392	G.S.	[Signature]	[Signature]	16 GA. (.063)		THE TECHNICAL MATERIEL CORP. MAMARONECK, NEW YORK GUY RING, ANTENNA (USED FOR 1 1/4 DIA. TUBE)	C	
	1	STOCK SIZE WAS .125; FINISH ADDED						STOCK SIZE				
B	1	DIM. CHG. ID WAS 1 1/4	7/1/58	2	file	file	file	SEE NOTE				
	2	ADDED MFRS REF.										
A	1	2 1/4 OD WAS 2 OD KAD WAS 3/16 D	6/24/58	1	file	file	file					
TOLERANCES			SCALE:			MAXIMUM ALLOWABLE TOLERANCES HAVE BEEN DETERMINED AND ANY DEVIATIONS WILL BE CAUSE FOR REJECTION. REMOVE ALL BURRS AND SHARP EDGES		TYPE & TEMPER	HEAT TREAT. SPEC.	DRAWN	CHECKED	FINAL APPROVAL
DEC. DIM. ±								PASSIVATE				
FRAC. DIM. ±												
ANGULAR DIM. ±												
								FINISH & SPEC. NO.	ELEC. DES. APP.	MECH. DES. APP.	MS-1271	C

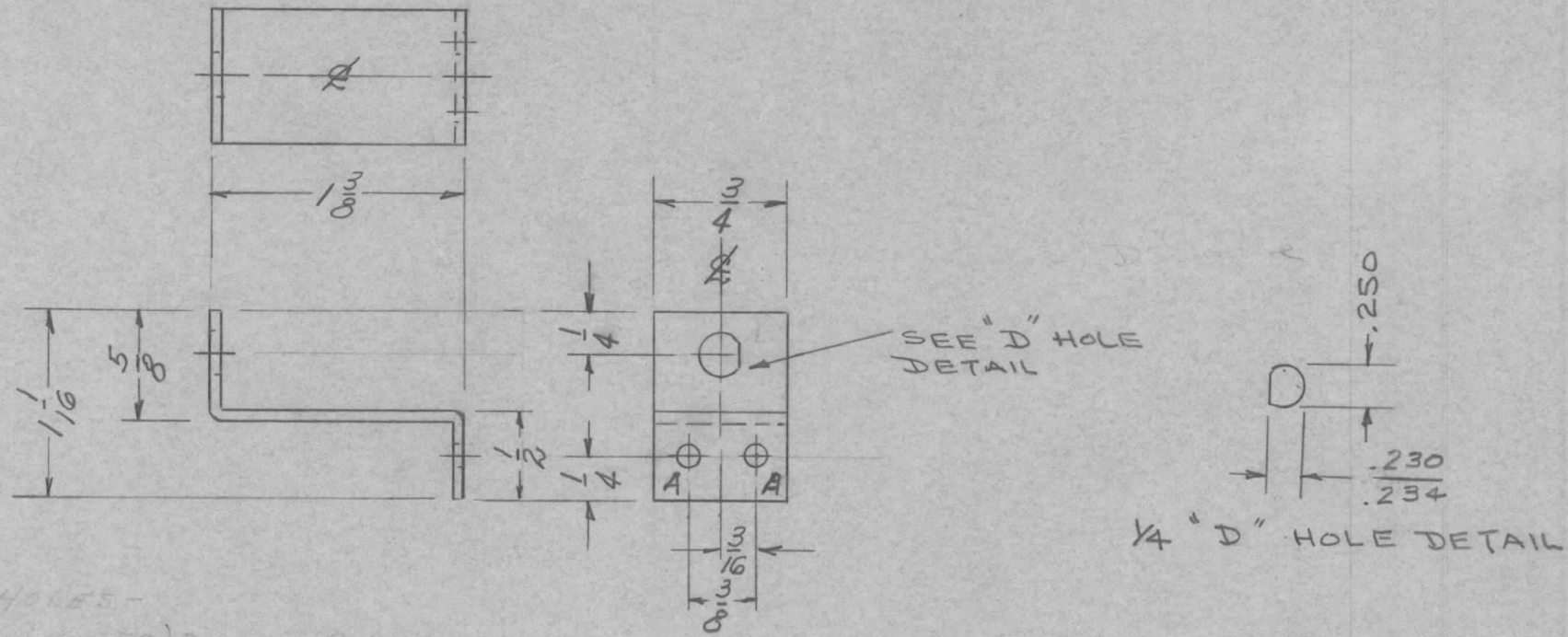
REQ. PER UNIT	USED ON			MS-1272	A
	MODEL	ASS'Y. NO.	DATE		
1	RFA-1		5-27-58		



A -  $\frac{13}{64}$  (.203) D. 2 Req.

ISSUE	ITEM	CHANGED FROM	DATE	CH. NO.	DRAFTS	CHECKER	ENG. APP.	REQ. ITEM	PART NO.	DESCRIPTION	SYMBOL	
								.064 THK.		THE TECHNICAL MATERIEL CORP. MAMARONECK, NEW YORK		
								STOCK SIZE				
A	1	5404-Y-IRIDITE WAS S101-CAUSTIC DIP	12-8 59	1001	P		EMN	Aluminium		PLATE, FIXED, NEUTRALIZING		
								MATERIAL		CAPACITOR		
TOLERANCES			SCALE: FULL					5052-H32	16 <sup>5/27/58</sup>	file	APM	
DEC. DIM. $\pm$			MAXIMUM ALLOWABLE TOLERANCES HAVE BEEN DETERMINED AND ANY DEVIATIONS WILL BE CAUSE FOR REJECTION. REMOVE ALL BURRS AND SHARP EDGES					TYPE & TEMPER	HEAT TREAT. SPEC.	DRAWN	CHECKED	FINAL APPROVAL
FRAC. DIM. $\pm$ 1/64								S404 YEL IRIDITE				RFB
ANGULAR DIM. $\pm$ 2°								FINISH & SPEC. NO.	ELEC. DES. APP.	MECH. DES. APP.		

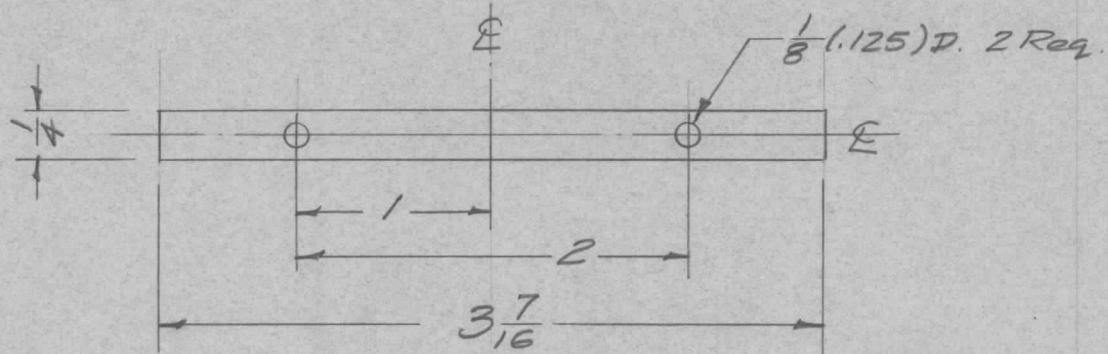
REQ. PER UNIT	USED ON			MS-1273	B
	MODEL	ASS'Y. NO.	DATE		
1	SWR-3000 <sub>CV</sub>	A-1547	5/27/58		
1	SWR-3000 CV	A-1548			



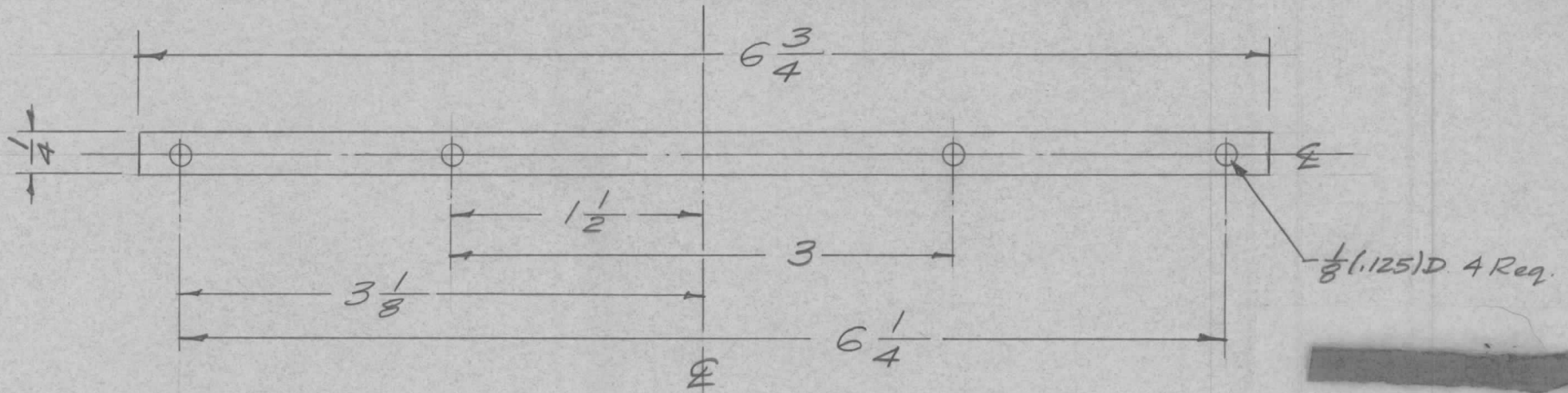
HOLE S -  
 A -  $\frac{1}{8}$  (.125) DIA - 2 REQ.

REQ.	ITEM	PART NO.	DESCRIPTION				SYMBOL
		.064 THICK	THE TECHNICAL MATERIEL CORP.				
		STOCK SIZE	MAMARONECK, NEW YORK				
B	1	.234/.234 WAS 210	BRACKET				
A	1	5404-Y-IRIDITE WAS 5101-CAUSTIC DIP					
ISSUE	ITEM	CHANGED FROM	DATE	CH. NO.	DRAFTS	CHECKER	ENG. APP.
			11-30-65	15294	2	JLV	EMN
TOLERANCES		SCALE:					
DEC. DIM. $\pm$		MAXIMUM ALLOWABLE TOLERANCES HAVE BEEN DETERMINED AND ANY DEVIATIONS WILL BE CAUSE FOR REJECTION.					
FRAC. DIM. $\pm$ 1/64		REMOVE ALL BURRS AND SHARP EDGES					
ANGULAR DIM. $\pm$							
5052-H32		CPS		DWN 5/27/58		JLR	
TYPE & TEMPER		HEAT TREAT. SPEC.		DRAWN		CHECKED	
5404-YEL IRIDITE				DWN		DWN	
FINISH & SPEC. NO.		ELEC. DES. APP.		MECH. DES. APP.		MS-1273 B	

REQ. PER UNIT	USED ON			MS-1274	B
	MODEL	ASS'Y. NO.	DATE		
2Ea.	RFA-1		6-4-58		



MS-1274-1



MS-1274-2

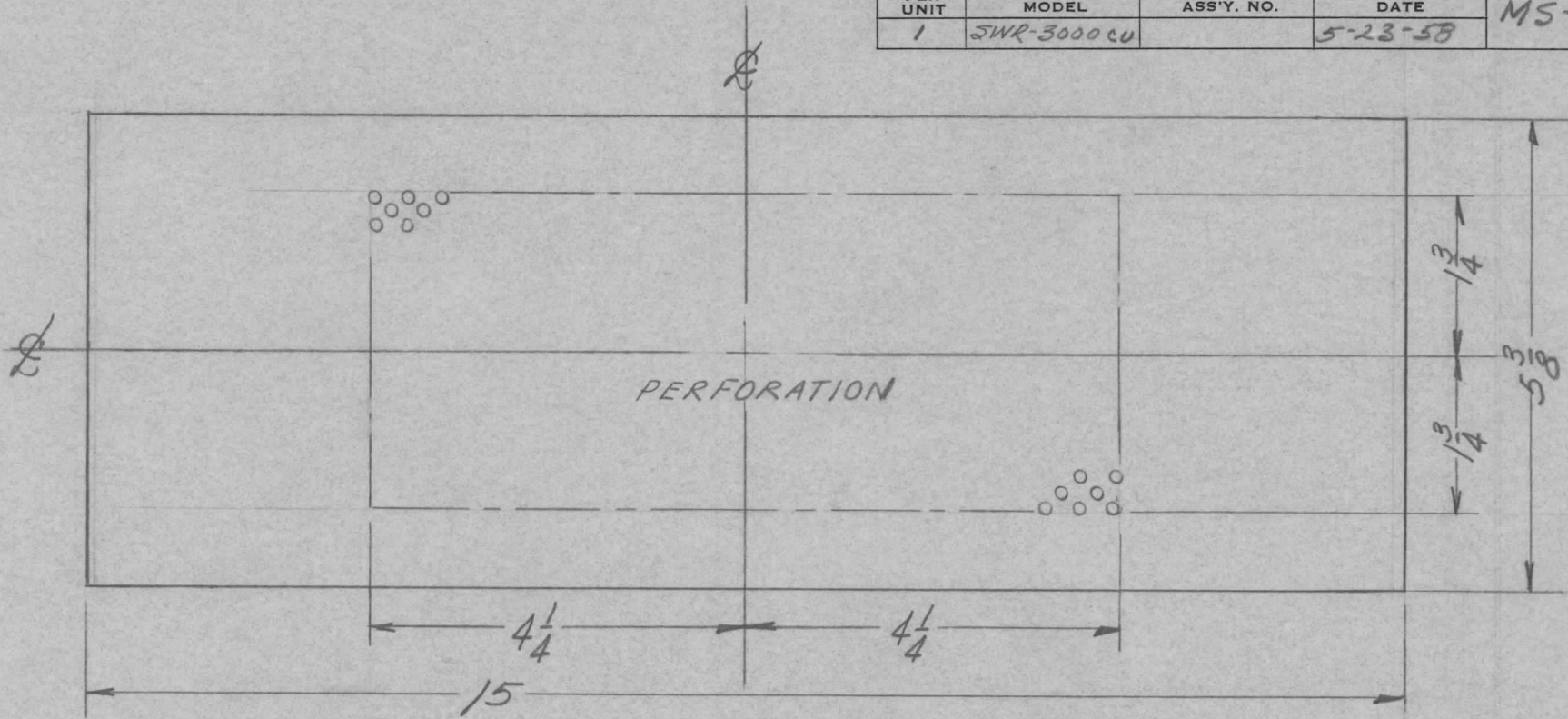
For SN-101

REQ. ITEM	PART NO.	DESCRIPTION	SYMBOL
B 1	S404-Y-IRIDITE WAS	THE TECHNICAL MATERIEL CORP.	
A 1	S101 CAUSTIC DIP	MAMARONECK, NEW YORK	
	Redrawn - completely revised - made into Family	STRAP, SCREEN RETAINING	
ISSUE ITEM	CHANGED FROM	DATE	CH. NO.
		12-8	1001
		6/4/58	1
TOLERANCES		SCALE: FULL	
DEC. DIM. ±		MAXIMUM ALLOWABLE TOLERANCES HAVE BEEN DETERMINED AND ANY DEVIATIONS WILL BE CAUSE FOR REJECTION.	
FRAC. DIM. ± 1/64		REMOVE ALL BURRS AND SHARP EDGES	
ANGULAR DIM. ±			
MATERIAL		5052-H32	16 9/4/58
FINISH & SPEC. NO.		S404-YEL. IRIDITE	
ELEC. DES. APP.		RE-DRAWN	CHECKED
MECH. DES. APP.			FINAL APPROVAL
			MS-1274
			B



REQ. PER UNIT	USED ON		
	MODEL	ASS'Y. NO.	DATE
1	SWR-3000 CU		5-23-58

MS-1280



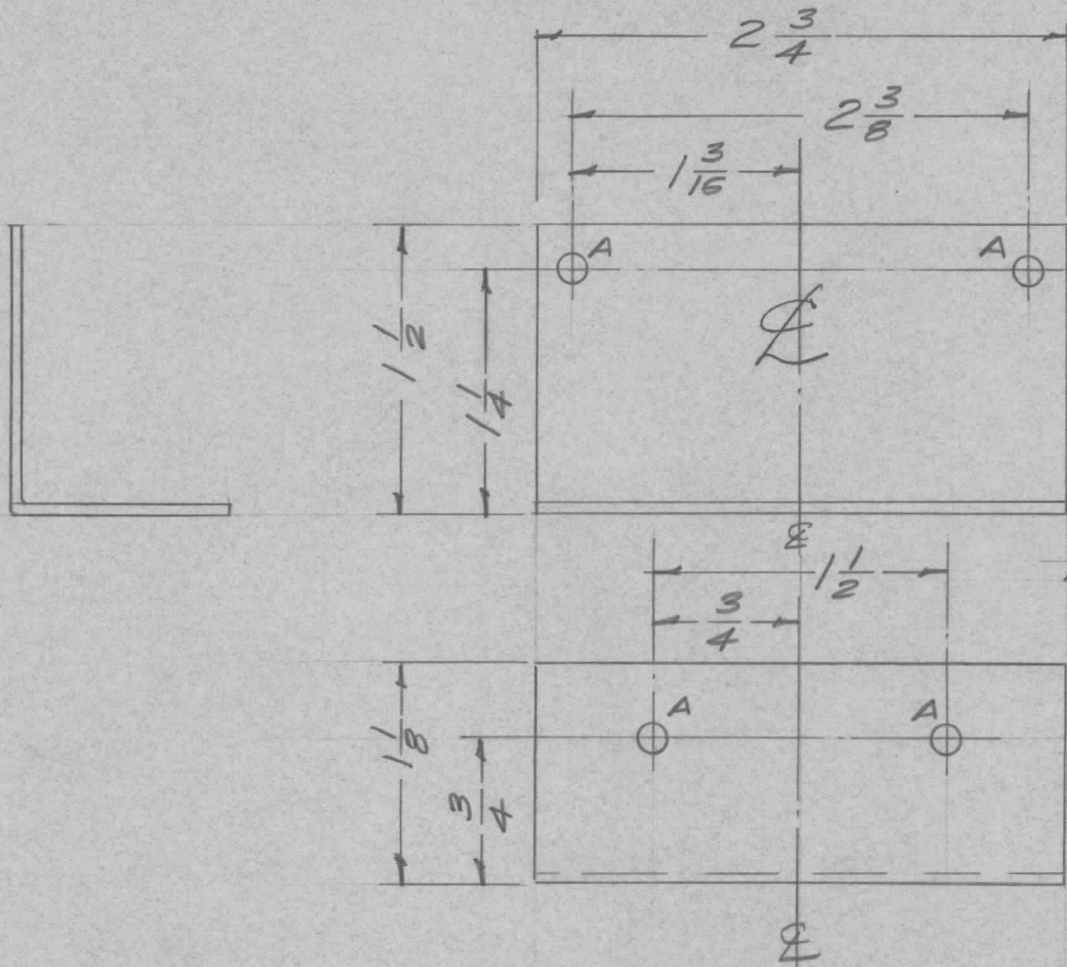
PERFORATION

PERFORATION:  
 .072 DIAM. HOLES ON 1/8 CENTERS

REF - THC #1279

REQ. ITEM	PART NO.	DESCRIPTION	SYMBOL
	.064 THICK	THE TECHNICAL MATERIEL CORP. MAMARONECK, NEW YORK	
	STOCK SIZE		
	ALUMINUM	BLANK SIZE, COVER	
	MATERIAL		
ISSUE ITEM	CHANGED FROM	DATE	CH. NO. DRAFTS CHECKER ENG. APP.
TOLERANCES		SCALE: 1/2	
DEC. DIM. ±		MAXIMUM ALLOWABLE TOLERANCES HAVE BEEN DETERMINED AND ANY DEVIATIONS WILL BE CAUSE FOR REJECTION.	
FRAC. DIM. ± 1/64		REMOVE ALL BURRS AND SHARP EDGES	
ANGULAR DIM. ±			
5052-H32	CPA	5-23-58	ADe
TYPE & TEMPER	HEAT TREAT. SPEC.	DRAWN	CHECKED
	CPA	BAF	JSR
FINISH & SPEC. NO.		ELEC. DES. APP.	MECH. DES. APP.
			MS-1280

REQ. PER UNIT	USED ON			MS-1282	A
	MODEL	ASS'Y. NO.	DATE		
1	PSP-350		6-5-58		



Ref- 1LD-403

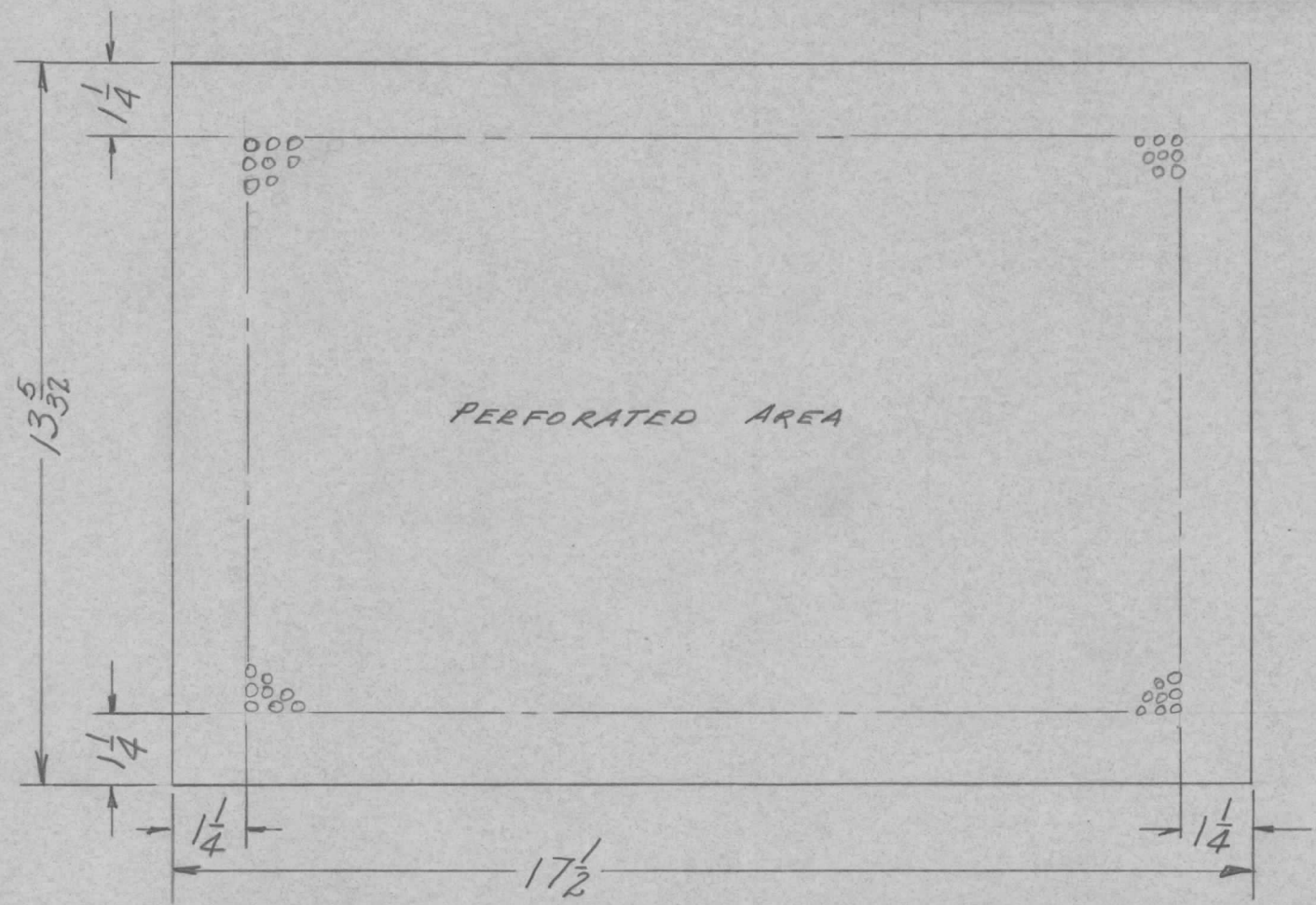
REQ. ITEM	PART NO.	DESCRIPTION	SYMBOL
	.064 THK.	THE TECHNICAL MATERIEL CORP. MAMARONECK, NEW YORK	A
	STOCK SIZE		
	ALUMINUM	BRACKET, CAPACITOR MTG.	
	MATERIAL		
	5052-H32	16 6/5/58	
		DRAWN	CHECKED
			FINAL APPROVAL
	S404-YEL-IRIDITE		MS-1282
	FINISH & SPEC. NO.	ELEC. DES. APP.	MECH. DES. APP.

A / 5404-YEL-IRIDITE WAS 12-8 1001 P EMN  
 S101 CAUSTIC DIP 59  
 ISSUE ITEM CHANGED FROM DATE CH. NO. DRAFTS CHECKER ENG. APP.  
 TOLERANCES SCALE: FULL  
 DEC. DIM. ±  
 FRAC. DIM. ± 1/64  
 ANGULAR DIM. ±  
 MAXIMUM ALLOWABLE TOLERANCES HAVE BEEN DETERMINED AND ANY DEVIATIONS WILL BE CAUSE FOR REJECTION.  
 REMOVE ALL BURRS AND SHARP EDGES

BTTM.  
BOTH

REQ. PER UNIT	USED ON		
	MODEL	ASS'Y. NO.	DATE
1	MSR-1	MS-1005	6-12-58
2	FFR	A-317	6-12-58

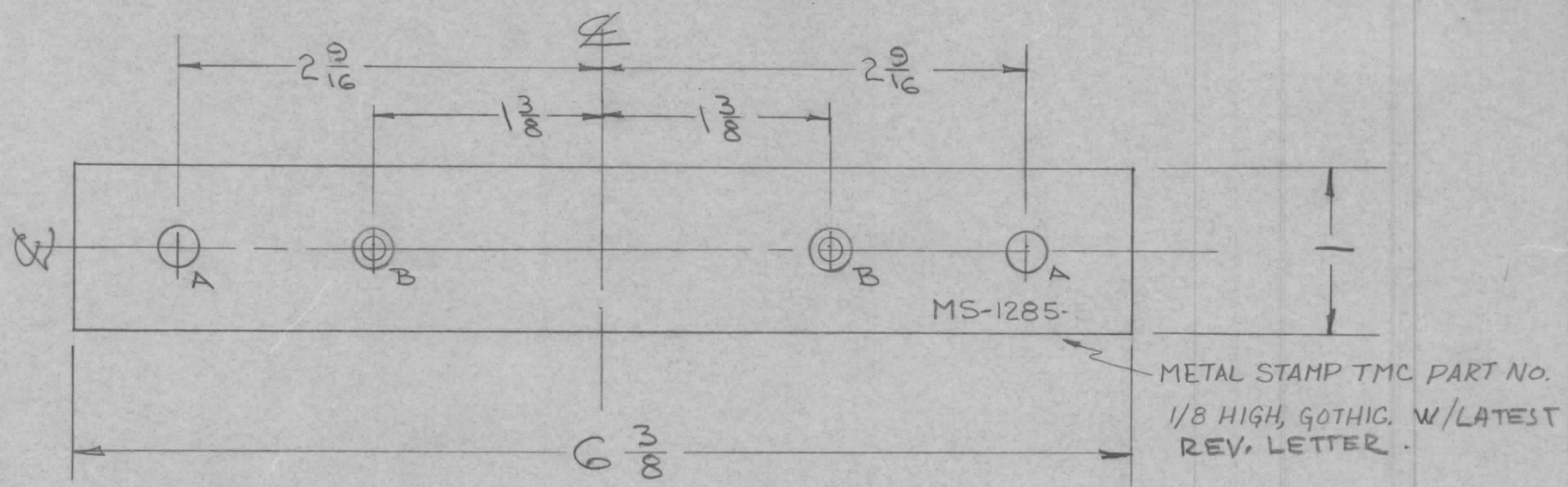
MS-1283



NOTE:  
PERFORATION  
.072 DIA HOLES  
ON 1/8" CENTERS

REQ. ITEM	PART NO.	DESCRIPTION	SYMBOL
	.051 THICK	THE TECHNICAL MATERIEL CORP. MAMARONECK, NEW YORK	
	STOCK SIZE		
	ALUMINUM		BLANK SIZE, COVER
ISSUE ITEM	CHANGED FROM	DATE	CH. NO. DRAFTS CHECKER ENG. APP.
TOLERANCES		SCALE: NO SCALE	
DEC. DIM. ±		MAXIMUM ALLOWABLE TOLERANCES HAVE BEEN DETERMINED AND ANY DEVIATIONS WILL BE CAUSE FOR REJECTION. REMOVE ALL BURRS AND SHARP EDGES	
FRAC. DIM. ± 1/64			
ANGULAR DIM. ±			
5052-H32	cta	6/12/58	cta
TYPE & TEMPER	HEAT TREAT. SPEC.	DRAWN	CHECKED
	cta		cta
FINISH & SPEC. NO.	ELEC. DES. APP.	MECH. DES. APP.	MS-1283

REQ. PER UNIT	USED ON		MS-1285 C
	MODEL	ASS'Y. NO.	
2	ATS-70 CU		6/19/58
2	ATS-70 CU-2		4/23/59

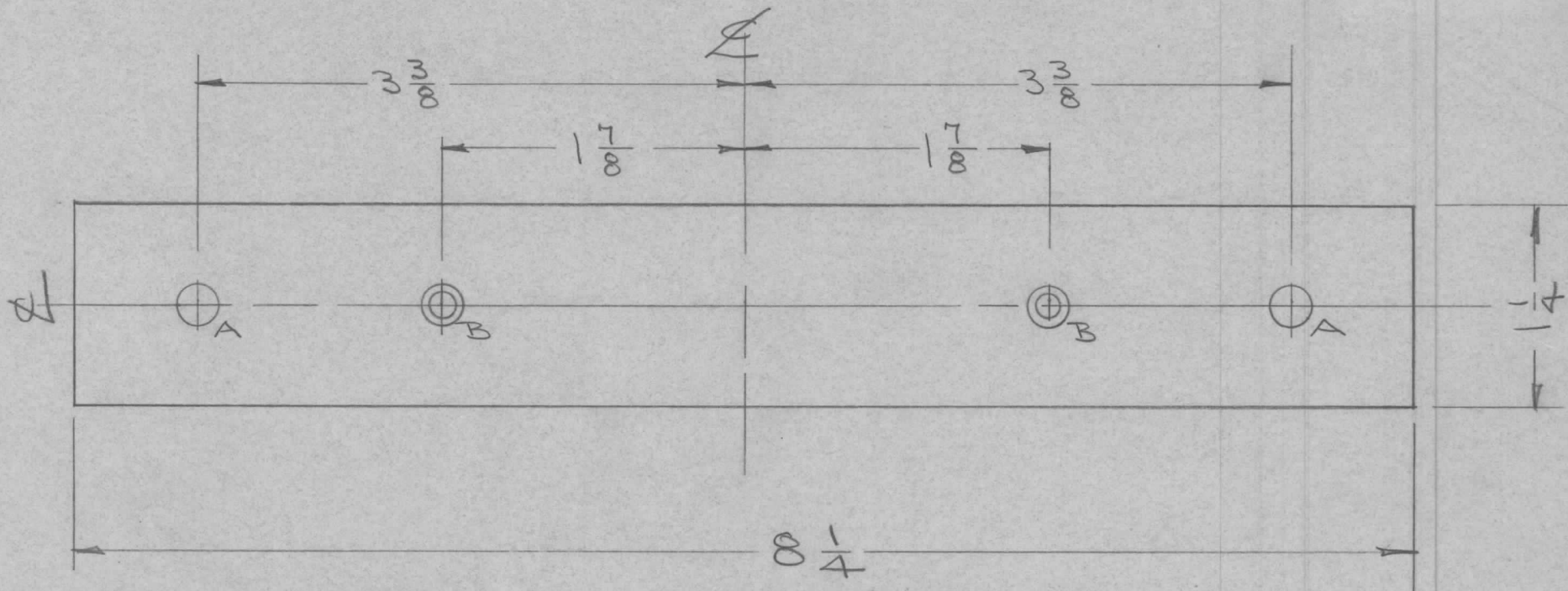


A - 1/4 (.250) DIA 2 REQ.  
 B - .169 DIA. C'SINK 82° TO .337 DIA 2 REQ

FINISH NOTES:  
 S-404 YELLOW TRIDITE  
 S-114 ZINC CHROMATE PRIMER  
 S-115 SMOOTH GRAY ENAMEL

REQ.	ITEM	PART NO.	DESCRIPTION				SYMBOL
C			1/8" x 1"				THE TECHNICAL MATERIEL CORP. MAMARONECK, NEW YORK BRACKET, MOUNTING
B	2		STOCK SIZE				
A	1		ALUMINUM				
ISSUE ITEM			MATERIAL				
CHANGED FROM			6063-T5	DRAWN		CHECKED	FINAL APPROVAL
TOLERANCES			SCALE: FULL				
DEC. DIM. ±			MAXIMUM ALLOWABLE TOLERANCES HAVE BEEN DETERMINED AND ANY DEVIATIONS WILL BE CAUSE FOR REJECTION.				
FRAC. DIM. ± 1/64			REMOVE ALL BURRS AND SHARP EDGES				
ANGULAR DIM. ±			FINISH & SPEC. NO.				
			ELEC. DES. APP.		MECH. DES. APP.		MS-1285 C

REQ. PER UNIT	USED ON			MS 1286 C
	MODEL	ASS'Y. NO.	DATE	
2	SWR-3000CU		6-19-58	

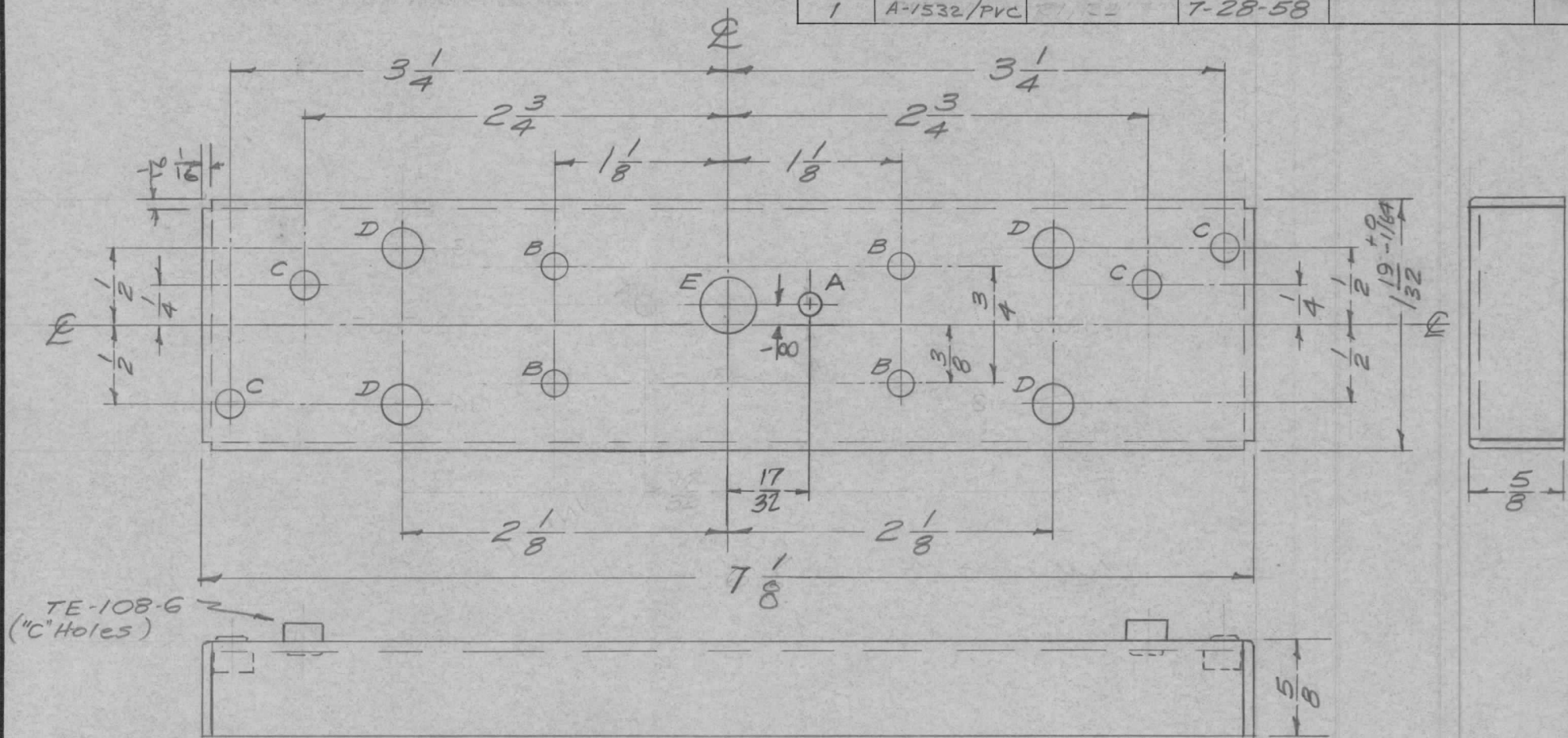


A - 1/4 (.250) DIA 2 REQ  
 B - .169 DIA. C'SINK 82° TO .337 DIA. 2 REQ.

FINISH NOTES:  
 S409 YEL IRIDITE  
 S-114 ZINC CHROMATE PRIMER  
 S520 BLUE GRAY TEXTURED VINYL.

REQ.	ITEM	PART NO.	DESCRIPTION				SYMBOL	
C	B HOLE WAS DRILL & CHSK FOR 8 F.H.S	10-7-66 17007	1/8 THICK				THE TECHNICAL MATERIEL CORP. MAMARONECK, NEW YORK  BRACKET, MOUNTING SWR-3000 CU	
B	S220 REPLACED BY S520 (FINISH)	10/5/65 14932	STOCK SIZE					
A	S404 - IRIDITE WAS S101 - CAUSTIC DIP	12-8/59 1001	ALUMINUM					
ISSUE ITEM CHANGED FROM DATE CH. NO. DRAFTS CHECKER ENG. APP.			MATERIAL					
TOLERANCES			SCALE: FULL					
DEC. DIM. ±			MAXIMUM ALLOWABLE TOLERANCES HAVE BEEN DETERMINED AND ANY DEVIATIONS WILL BE CAUSE FOR REJECTION.					
FRAC. DIM. ± 1/64			REMOVE ALL BURRS AND SHARP EDGES					
ANGULAR DIM. ±								
S052-H32			TYPE & TEMPER		HEAT TREAT. SPEC.	DRAWN	CHECKED	FINAL APPROVAL
			SEE NOTES					
			FINISH & SPEC. NO.		ELEC. DES. APP.	MECH. DES. APP.	MS-1286 C	

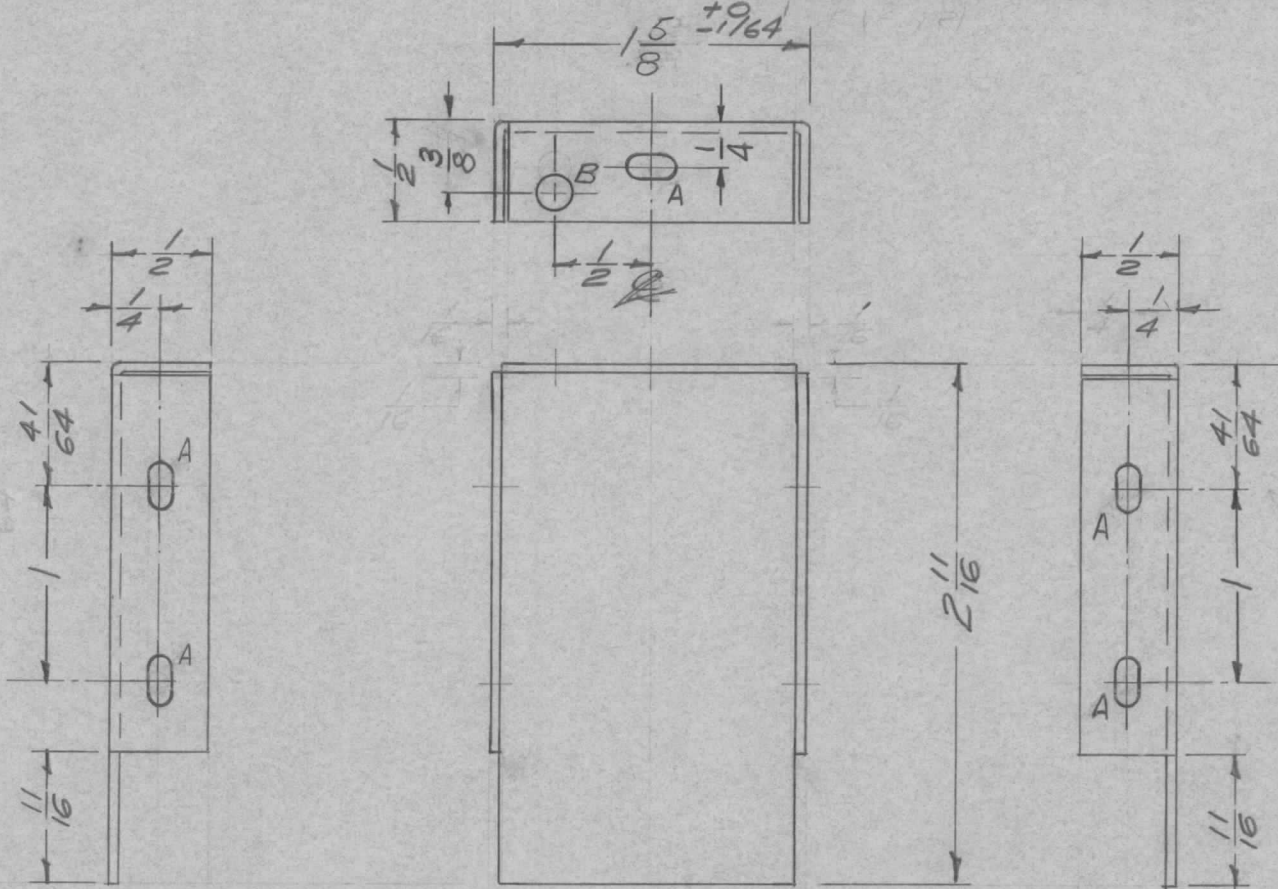
REQ. PER UNIT	USED ON			MS-1294	D
	MODEL	ASSY. NO.	DATE		
1	A-1532/PVC		7-28-58		



- A - 9/64 (.140) D. 1 Req.      D - 17/64 (.265) D. 4 Req.  
 B - 11/64 (.171) D. 4 Req.      E - 3/8 (.375) D. 1 Req.  
 C - No. 12 Dr. (.189 D) 4 Req. (For TE-108-6, mount as shown)      Ref: (1) LD-440

REQ. ITEM	PART NO.	DESCRIPTION	SYMBOL
D 1	5404-YEL IRIDITE WAS 12-8		
C 1	S101-CAUSTIC DIP 59		
B 1	"A" HOLE RELOCATED 10-15-58		
A 1	DIN CHG. 7/8 WAS 6 7/8 8/11/58		
ISSUE ITEM      CHANGED FROM		DATE	CH. NO.   DRAFTS   CHECKER   ENG. APP.
TOLERANCES		SCALE:	
DEC. DIM. ±		MAXIMUM ALLOWABLE TOLERANCES HAVE BEEN DETERMINED AND ANY DEVIATIONS WILL BE CAUSE FOR REJECTION.	
FRAC. DIM. ± 1/64		REMOVE ALL BURRS AND SHARP EDGES	
ANGULAR DIM. ±			
.064 THK.		THE TECHNICAL MATERIEL CORP. MAMARONECK, NEW YORK	
STOCK SIZE		CHASSIS,	
Aluminium			
MATERIAL			
5052-H32		16 7/28/58	
TYPE & TEMPER		HEAT TREAT. SPEC.	DRAWN      CHECKED      FINAL APPROVAL
5404 YEL-IRIDITE			
FINISH & SPEC. NO.		ELEC. DES. APP.	MECH. DES. APP.
			MS-1294 D

REQ. PER UNIT	USED ON		MS-1296 D
	MODEL	ASSY. NO.	
2	A-1532/PVC		7-28-58



A -  $\frac{1}{8} \times \frac{1}{4}$  Slots 5 Req.  
 B -  $\frac{11}{64}$  (.171) D. 1 Req.

USE MATERIAL THICKNESS FOR MAX. RADIUS ON ALL BENDS UNLESS OTHERWISE SPECIFIED

ISSUE	ITEM	CHANGED FROM	DATE	CH. NO.	DRAFTS	CHECKER	ENG. APP.	REQ. ITEM	PART NO.	DESCRIPTION	SYMBOL	
D	2	1-5/8" DIN WAS 1-19/32	7-12-62	6896	ef	<del>ef</del>	<del>ef</del>			THE TECHNICAL MATERIEL CORP. MAMARONECK, NEW YORK PLATE, SIDE	MS-1296 D	
	1	1/16" NOTCHES DELETED										
C	1	5404-YEL-IRIDITE S/D CAUSTIC DIP	12-59	1001	P		EMN					
B	1	"A" holes were 7/64 DIA	2-19-59	794	J.C.B.	file	ah					
A	1	"B" HOLE RELOCATED	10-17-58		J.C.B.	file	ah					
TOLERANCES								SCALE: FULL				
DEC. DIM. ±								MAXIMUM ALLOWABLE TOLERANCES HAVE BEEN DETERMINED AND ANY DEVIATIONS WILL BE CAUSE FOR REJECTION.				
FRAC. DIM. ± 1/64								REMOVE ALL BURRS AND SHARP EDGES				
ANGULAR DIM. ±												
								5052-H32		16 7/28/58	file	ah
								5404 YEL-IRIDITE		Rpm	ah	
								FINISH & SPEC. NO.		ELEC. DES. APP.	MECH. DES. APP.	