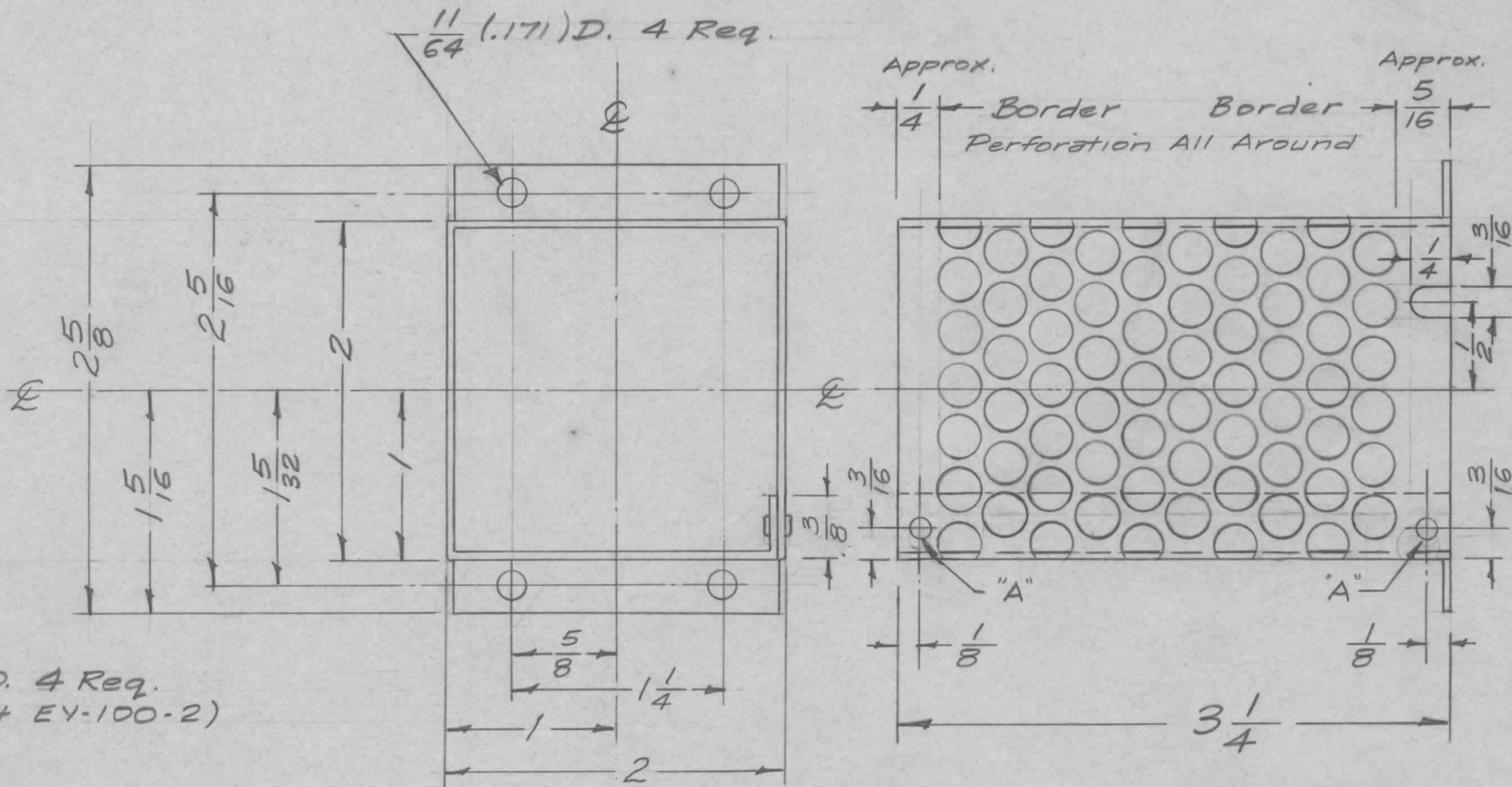


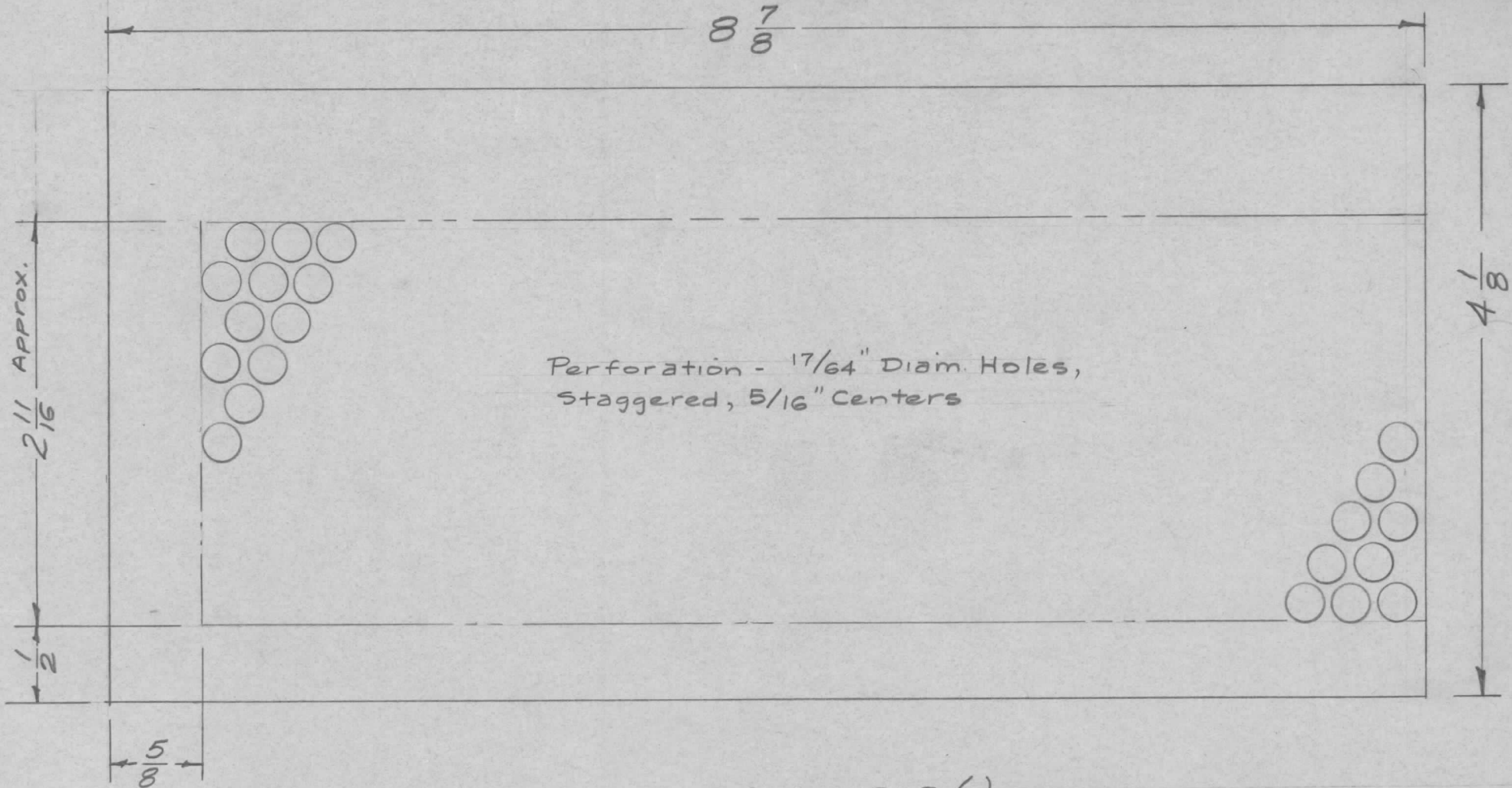
REQ. PER UNIT	USED ON			MS-1202	B
	MODEL	ASS'Y. NO.	DATE		
1	ATS-TU		3-11-58		



Ref- MS-1203(1) Blank Size

REQ. ITEM	PART NO.	DESCRIPTION	SYMBOL
B /	S404-IRIDITE WAS S101-CAUSTIC DIP	12-8 59	1001 P
A /	3/16 X 1/4 SLOT ADDED	4/3/58	1 16
ISSUE	ITEM	CHANGED FROM	DATE CH. NO. DRAFTS CHECKER ENG. APP.
TOLERANCES		SCALE: FULL	
DEC. DIM. $\pm$		MAXIMUM ALLOWABLE TOLERANCES HAVE BEEN DETERMINED AND ANY DEVIATIONS WILL BE CAUSE FOR REJECTION.	
FRAC. DIM. $\pm \frac{1}{64}$		REMOVE ALL BURRS AND SHARP EDGES	
ANGULAR DIM. $\pm$			
5052-H32		16 $\frac{3}{16}$ 58	EMM
.051 THK. STOCK SIZE		THE TECHNICAL MATERIEL CORP. MAMARONECK, NEW YORK	
Aluminum		COVER, HUMIDITY ELEMENT	
MATERIAL			
TYPE & TEMPER		DRAWN	CHECKED
HEAT TREAT. SPEC.		FINAL APPROVAL	
S404 IRIDITE		MS-1202 B	
FINISH & SPEC. NO.		ELEC. DES. APP.	MECH. DES. APP.

REQ. PER UNIT	USED ON			MS-1203
	MODEL	ASS'Y. NO.	DATE	
1	ATS-TU		3-12-58	



Ref- MS-1202 (i) cover

ISSUE	ITEM	CHANGED FROM	DATE	CH. NO.	DRAFTS	CHECKER	ENG. APP.	REQ. ITEM	PART NO.	DESCRIPTION	SYMBOL	
										<b>THE TECHNICAL MATERIEL CORP.</b> MAMARONECK, NEW YORK BLANK SIZE, HUMIDITY ELEMENT COVER		
									.051 Thk.			
									STOCK SIZE			
									Aluminum			
									MATERIAL			
								5052-H32	N	16 3/11/58		
										DRAWN	CHECKED	FINAL APPROVAL
												MS-1203
										FINISH & SPEC. NO.	ELEC. DES. APP.	MECH. DES. APP.

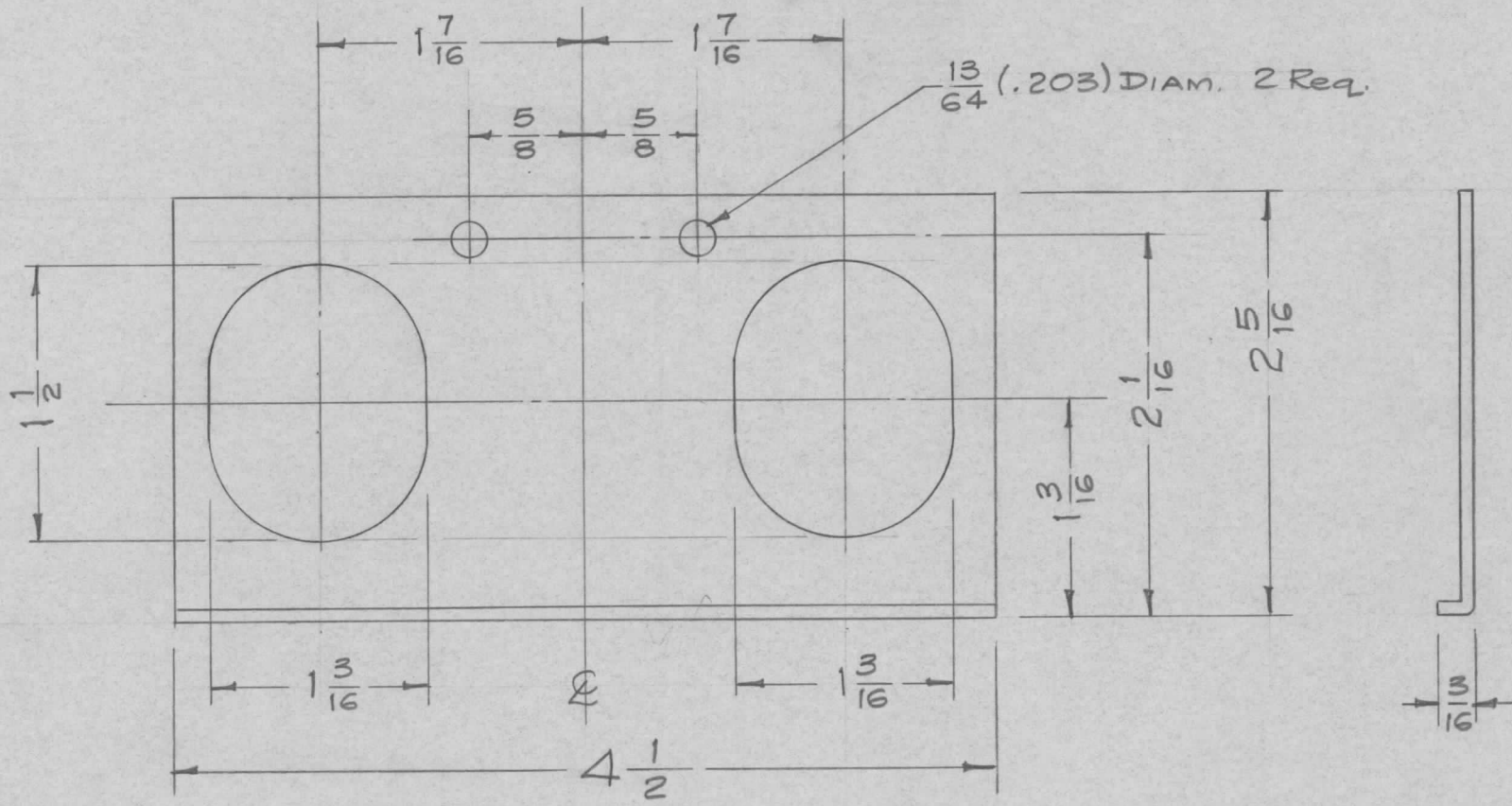
DEC. DIM.  $\pm$   
FRAC. DIM.  $\pm$  1/64  
ANGULAR DIM.  $\pm$

SCALE:  
MAXIMUM ALLOWABLE TOLERANCES HAVE BEEN DETERMINED AND ANY DEVIATIONS WILL BE CAUSE FOR REJECTION.  
REMOVE ALL BURRS AND SHARP EDGES





REQ. PER UNIT	USED ON			MS-1206	A
	MODEL	ASS'Y. NO.	DATE		
1	SBE-1&2	A-1514	3-17-58		

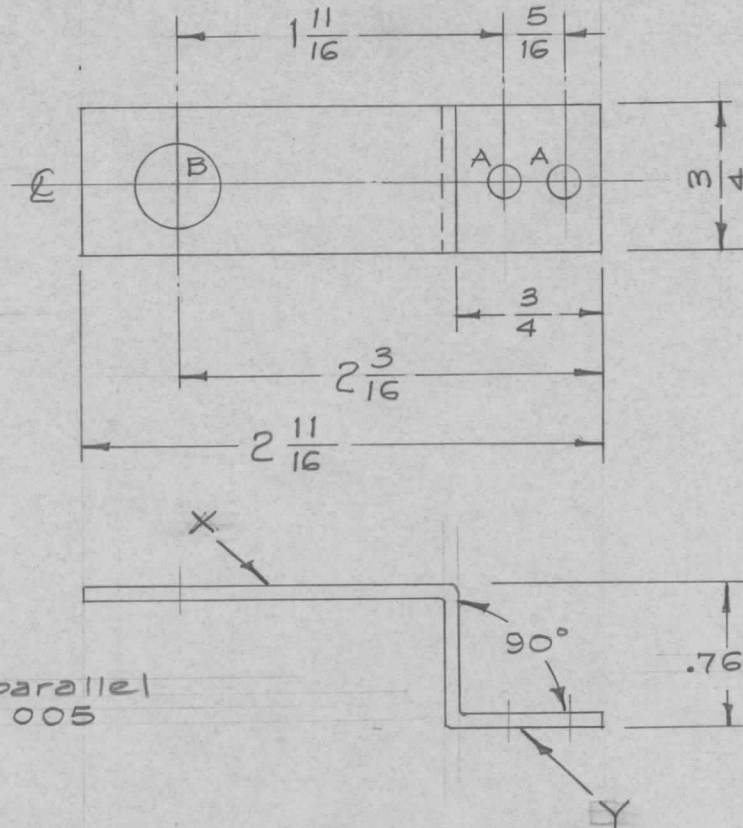


ISSUE	ITEM	CHANGED FROM	DATE	CH. NO.	DRAFTS	CHECKER	ENG. APP.	REQ. ITEM	PART NO.	DESCRIPTION	SYMBOL	
										THE TECHNICAL MATERIEL CORP. MAMARONECK, NEW YORK		
									.064 THK STOCK SIZE	PLATE, RETAINING		
A	1	5404 - IRIDITE WAS 5101 CAUSTIC DIP	12-8 59	1001	P		EMN		Aluminum			
									MATERIAL			
								5052H32		6/3/17/58		
									TYPE & TEMPER	CHECKED		
									HEAT TREAT. SPEC.		FINAL APPROVAL	
									S404 IRIDITE		MS-1206	
									FINISH & SPEC. NO.	ELEC. DES. APP.	A	
TOLERANCES			SCALE: FULL									
DEC. DIM. $\pm$			MAXIMUM ALLOWABLE TOLERANCES HAVE BEEN DETERMINED AND ANY DEVIATIONS WILL BE CAUSE FOR REJECTION.									
FRAC. DIM. $\pm 1/64$			REMOVE ALL BURRS AND SHARP EDGES									
ANGULAR DIM. $\pm$												



REQ. PER UNIT	USED ON		
	MODEL	ASS'Y. NO.	DATE
1	SBE-2	A-1517	3-17-58
1	SBE-3	AP-100	11-30-59

MS-1209 A



A -  $\frac{11}{64}$  (.171) Diam. 2 Req.  
 B -  $\frac{7}{16}$  (.437) Diam. 1 Req.

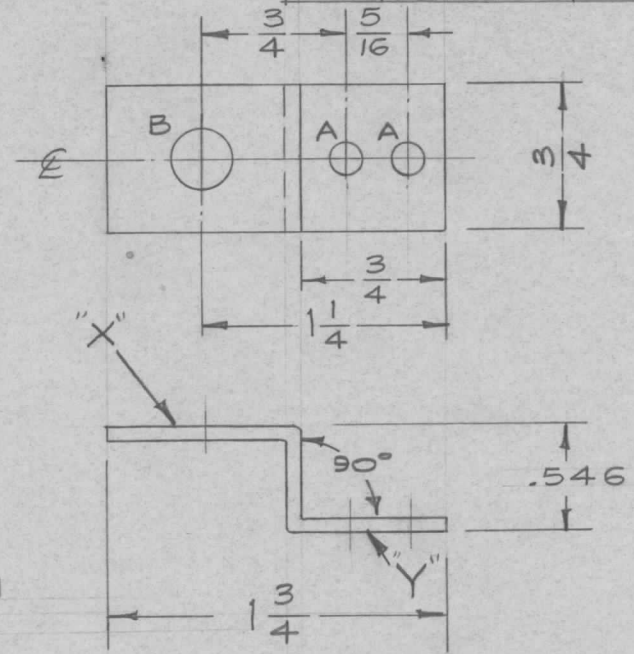
Note - Surface "X" will be parallel with surface "Y" within .005

REQ.	ITEM	PART NO.	DESCRIPTION				SYMBOL
		.081 THK.	THE TECHNICAL MATERIEL CORP.				
		STOCK SIZE	MAMARONECK, NEW YORK				
		Aluminum	BRACKET, INERTIA WHEEL				
		MATERIAL					
A	1	5404 - IRIDITE WAS S/O CAUSTIC DIP	12-8 59	1001	EMX		
ISSUE	ITEM	CHANGED FROM	DATE	CH. NO.	DRAFTS	CHECKER	ENG. APP.
TOLERANCES			SCALE: FULL				
DEC. DIM. $\pm$ .001			MAXIMUM ALLOWABLE TOLERANCES HAVE BEEN DETERMINED AND ANY DEVIATIONS WILL BE CAUSE FOR REJECTION. REMOVE ALL BURRS AND SHARP EDGES				
FRAC. DIM. $\pm$ 1/64							
ANGULAR DIM. $\pm$ 1°							
5052-H32		HEAT TREAT. SPEC.	16 <sup>3/17/58</sup>	JAE	CHK		
S404 IRIDITE		FINISH & SPEC. NO.		ahm		MS-1209	A
		ELEC. DES. APP.	MECH. DES. APP.				



REQ. PER UNIT	USED ON		
	MODEL	ASS'Y. NO.	DATE
1	SBE-2	A-1517	3-17-58
1	SBE-3	AP-100	11-30-59
1	CHG-1		5-10-60

MS-1210 A



Note - Surface "X" will be parallel with surface "Y" within .005

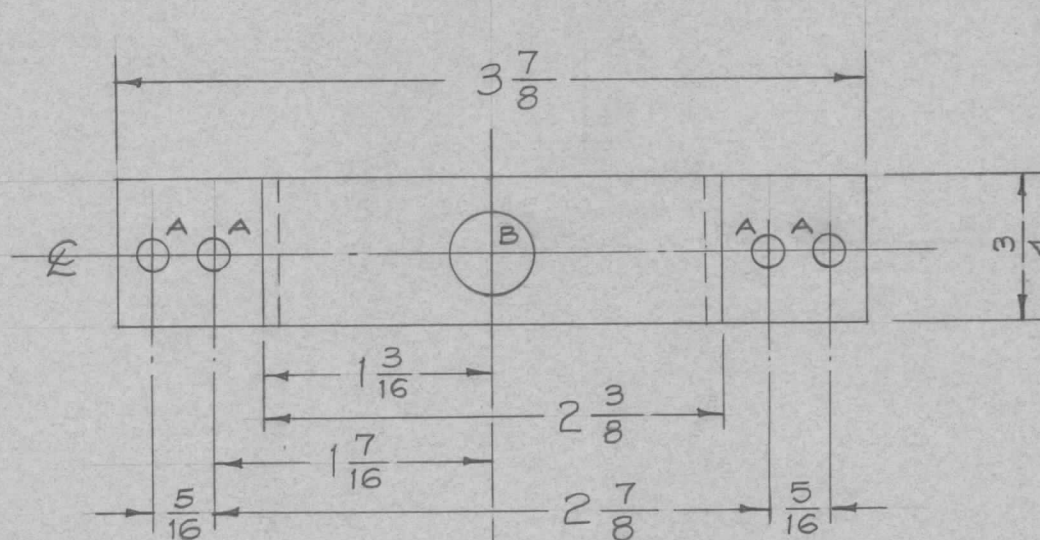
- A -  $\frac{11}{64}$  (.171) Diam. 2 Req.
- B -  $\frac{5}{16}$  (.312) Diam. 1 Req.

ISSUE	ITEM	CHANGED FROM	DATE	CH. NO.	DRAFTS	CHECKER	ENG. APP.	REQ. ITEM	PART NO.	DESCRIPTION	SYMBOL		
								.081 Thk.		THE TECHNICAL MATERIEL CORP. MAMARONECK, NEW YORK			
								STOCK SIZE		BRACKET, GEAR MTG.			
A	1	5404- IRIDITE WAS S101 CAUSTIC DIP	12-8 59	1001	P		EMV	Aluminum		(REF: (A-1456))			
								MATERIAL					
								5052-H32		16 <sup>3/17/58</sup>			
TOLERANCES			SCALE: FULL					TYPE & TEMPER		HEAT TREAT. SPEC.	DRAWN	CHECKED	FINAL APPROVAL
DEC. DIM. $\pm .001$			MAXIMUM ALLOWABLE TOLERANCES HAVE BEEN DETERMINED AND ANY DEVIATIONS WILL BE CAUSE FOR REJECTION. REMOVE ALL BURRS AND SHARP EDGES					S404-IRIDITE					
FRAC. DIM. $\pm 1/64$								FINISH & SPEC. NO.		ELEC. DES. APP.	MECH. DES. APP.		
ANGULAR DIM. $\pm 1^\circ$												MS-1210	A

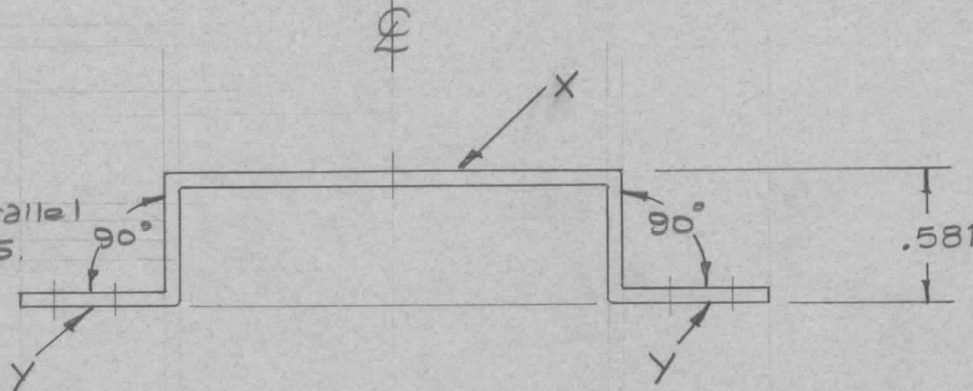
REQ. PER UNIT	USED ON		
	MODEL	ASS'Y. NO.	DATE
1	SBE-2	A-1517	3-17-58
1	SBE-3	AP-100	11-30-59

MS-1211

A

A -  $\frac{11}{64}$  (.171) Diam. 4 Req.B -  $\frac{7}{16}$  (.437) Diam. 1 Req.

Note - Surface "X" will be parallel with Surface "Y" within .005.



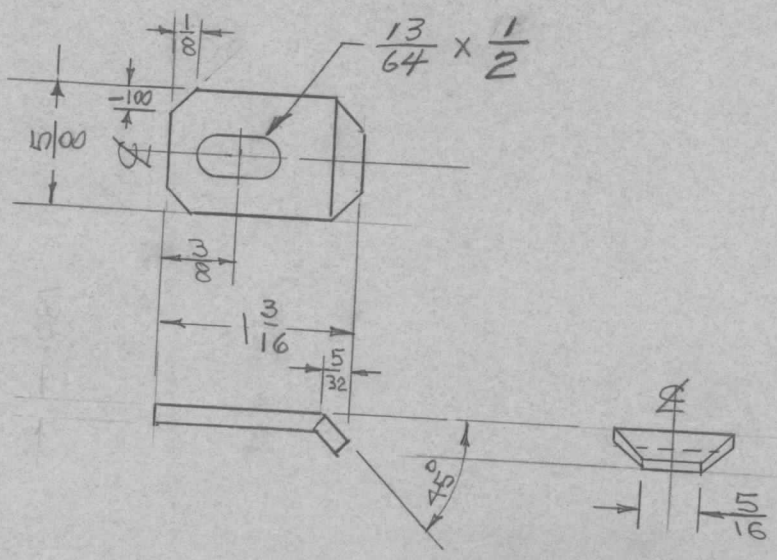
							REQ. ITEM	PART NO.	DESCRIPTION	SYMBOL			
							.081 Thk.		THE TECHNICAL MATERIEL CORP. MAMARONECK, NEW YORK				
							STOCK SIZE						
							Aluminum		BRACKET, GEAR MTG.				
							MATERIAL		(REF: GR-132)				
A	1	5404-IRIDITE WAS SIDI-CAUSTIC DIP	12-8 59	1001	P	EMN	5052-H32	16 3/17/58	<i>[Signature]</i>	<i>[Signature]</i>			
ISSUE ITEM		CHANGED FROM	DATE	CH. NO.	DRAFTS	CHECKER	ENG. APP.	DRAWN	CHECKED	FINAL APPROVAL			
TOLERANCES			SCALE: FULL			TYPE & TEMPER		HEAT TREAT. SPEC.		ELEC. DES. APP. MECH. DES. APP.			
DEC. DIM. $\pm .001$			MAXIMUM ALLOWABLE TOLERANCES HAVE BEEN DETERMINED AND ANY DEVIATIONS WILL BE CAUSE FOR REJECTION. REMOVE ALL BURRS AND SHARP EDGES			S404-IRIDITE				MS-1211			
FRAC. DIM. $\pm 1/64$						FINISH & SPEC. NO.						A	
ANGULAR DIM. $\pm 1^\circ$													





REQ. PER UNIT	MODEL	USED ON	
		ASS'Y. NO.	DATE
2	GPR-90RX		4-3-58
2	RAK-4		4-23-58

MS-1214 C



ISSUE	ITEM	CHANGED FROM	DATE	CH. NO.	DRAFTS	CHECKER	ENG. APP.	REQ. ITEM	PART NO.	DESCRIPTION	SYMBOL
	C	Mat. was 16 GA.	9/2/58	440	file	LS	John				
	B	Dim. Chg 13/16 w x 1 1/8	8/7/58	417	file	LS	John				
	A	1/8 was 1	6/4/58	1	file	LS	John				
TOLERANCES								MATERIAL		CLAMP, CHASSIS	
DEC. DIM. ±								STEEL		THE TECHNICAL MATERIEL CORP. MAMARONECK, NEW YORK	
FRAC. DIM. ± 1/64								COLD ROLLED			
ANGULAR DIM. ± 1°								CADMIUM PLATED		DRAWN	
SCALE:								#0002			
MAXIMUM ALLOWABLE TOLERANCES HAVE BEEN DETERMINED AND ANY DEVIATIONS WILL BE CAUSE FOR REJECTION. REMOVE ALL BURRS AND SHARP EDGES								FINISH & SPEC. NO.		CHECKED	
										FINAL APPROVAL	
										ELEC. DES. APP.	
										MECH. DES. APP.	
										MS-1214 C	

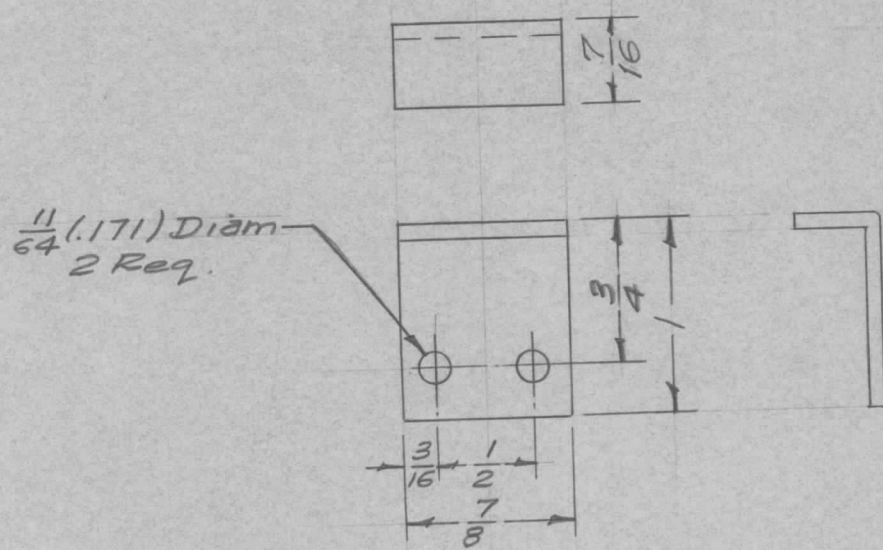
FORM-108-A

ISSUE	ITEM	CHANGED FROM	DATE	CH. NO.	DRAFTS	CHECKER	ENG. APP.	REQ. ITEM	PART NO.	DESCRIPTION	SYMBOL
TOLERANCES								MATERIAL			
DEC. DIM. ±								TYPE & TEMPER		ELEC. DES. APP.	
FRAC. DIM. ± 1/64								FINISH & SPEC. NO.			
SCALE:										ELEC. DES. APP.	
MAXIMUM ALLOWABLE TOLERANCES HAVE BEEN DETERMINED AND ANY DEVIATIONS WILL BE CAUSE FOR REJECTION. REMOVE ALL BURRS AND SHARP EDGES											

1/8" CENTER  
0.03 DIM. HOLES ON  
REPRODUCTION



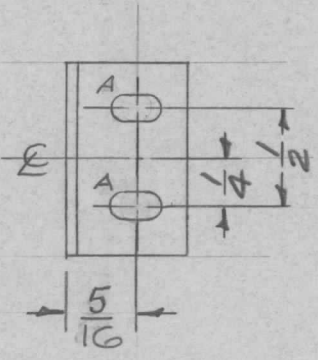
REQ. PER UNIT	USED ON			MS-1226	B
	MODEL	ASS'Y. NO.	DATE		
2	PSP-350		5-1-58		
2	PSP-350A				



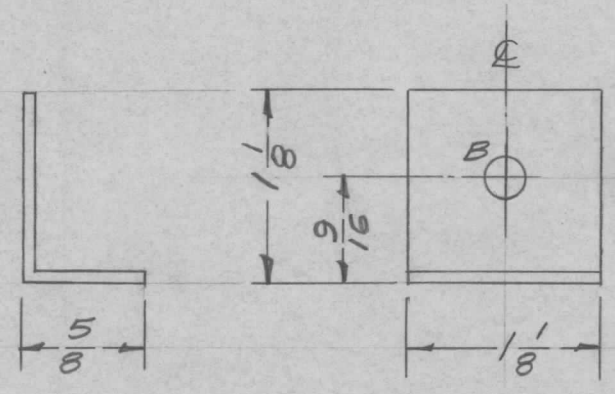
							REQ. ITEM	PART NO.	DESCRIPTION	SYMBOL		
							.081 THK		THE TECHNICAL MATERIEL CORP. MAMARONECK, NEW YORK			
							STOCK SIZE					
							Aluminum		BRACKET, TOP COVER			
							MATERIAL					
							5052-H32		16 5/1 58	<i>[Signature]</i>	<i>[Signature]</i>	
							TYPE & TEMPER	HEAT TREAT. SPEC.	DRAWN	CHECKED	FINAL APPROVAL	
							S404-IRIDITE				MS-1226	B
							FINISH & SPEC. NO.		ELEC. DES. APP.	MECH. DES. APP.		
TOLERANCES DEC. DIM. ± FRAC. DIM. ± 1/64 ANGULAR DIM. ±							SCALE: FULL MAXIMUM ALLOWABLE TOLERANCES HAVE BEEN DETERMINED AND ANY DEVIATIONS WILL BE CAUSE FOR REJECTION. REMOVE ALL BURRS AND SHARP EDGES					
B	1	DWG UPDATED	11/8/63	10348	<i>[Signature]</i>	<i>[Signature]</i>						
A	1	S404-IRIDITE WAS S101-CAUSTIC DIP	12-8 59	1001	P	EMN						
ISSUE	ITEM	CHANGED FROM	DATE	CH. NO.	DRAFTS	CHECKER	ENG. APP.					



REQ. PER UNIT	USED ON			MS-1227	D
	MODEL	ASS'Y. NO.	DATE		
2	PSP-350		4-24-58		



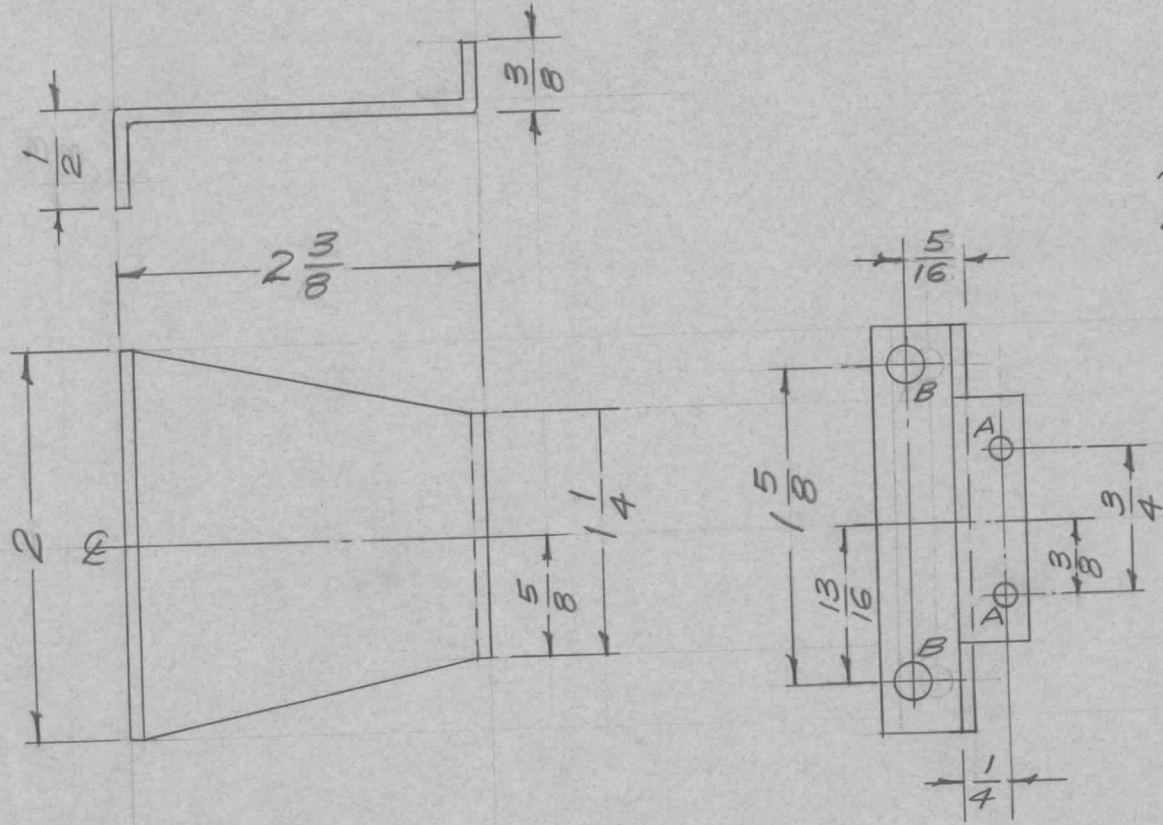
A -  $\frac{11}{64} \times \frac{11}{32}$  SLOT 2 REQ.  
 B -  $\frac{7}{32}$  (.218) D. 1 Req.



Ref. MS-1126 (Front Bracket)

ISSUE	ITEM	CHANGED FROM	DATE	CH. NO.	DRAFTS	CHECKER	ENG. APP.	REQ. ITEM	PART NO.	DESCRIPTION	SYMBOL		
D	1	S404 - IRIDITE WAS 5/16 WAS 5/32 (156) D	12-59	1001	P		EMN						
C	1	A - WAS 5/32 (.156) D HOLE - 2 REQ.	8/7/58	417	ave	file							
B	1	5/16 WAS 3/8	5/9/58	2	file	16							
A	1	1/8 WAS 1 WAS 1 PER UNIT	4/30/58	1	file								
TOLERANCES								SCALE: FULL					
DEC. DIM. $\pm$								MAXIMUM ALLOWABLE TOLERANCES HAVE BEEN DETERMINED AND ANY DEVIATIONS WILL BE CAUSE FOR REJECTION.					
FRAC. DIM. $\pm$ 1/64								REMOVE ALL BURRS AND SHARP EDGES					
ANGULAR DIM. $\pm$													
								5052H32		16/29/58			
								TYPE & TEMPER	HEAT TREAT. SPEC.	DRAWN	CHECKED	FINAL APPROVAL	
								S404 - IRIDITE					
								FINISH & SPEC. NO.	ELEC. DES. APP.	MECH. DES. APP.	MS-1227	D	

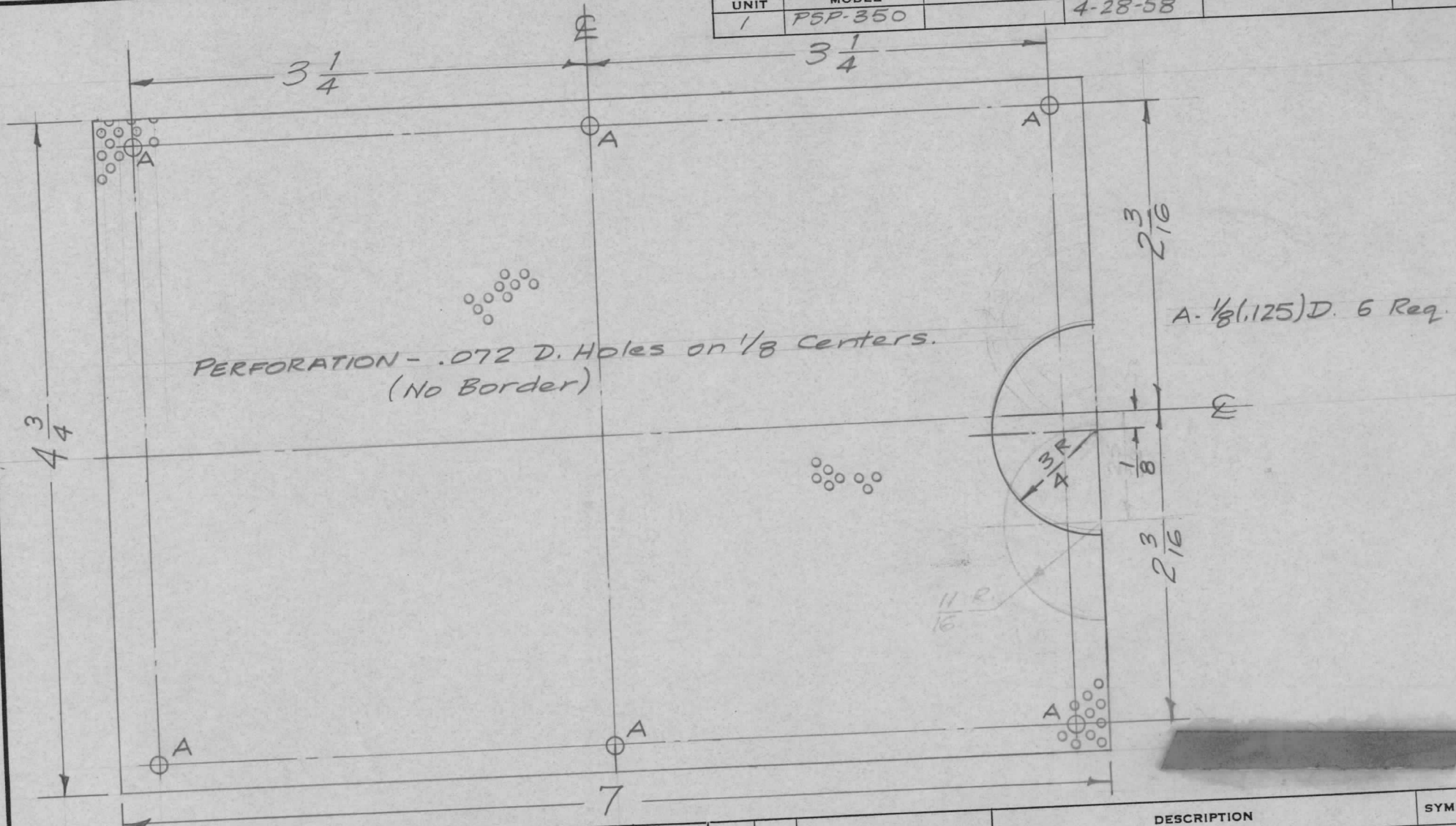
REQ. PER UNIT	USED ON		MS-1229	C
	MODEL	ASS'Y. NO.		
2	PSP-350		4-28-58	
2	PSP-350A			



A - 1/8 (.125) D. 2 Req.  
 B - 13/64 (.203) D. 2 Req.

ISSUE	ITEM	CHANGED FROM	DATE	CH. NO.	DRAFTS	CHECKER	ENG. APP.	REQ. ITEM	PART NO.	DESCRIPTION	SYMBOL				
C	1	DWG UPDATED	11/8/53	10348	DD	mf	Robb			THE TECHNICAL MATERIEL CORP. MAMARONECK, NEW YORK	BRACKET, CONNECTOR MTS.				
B	1	S404-1RIDITE WAS 5101 CAUSTIC DIP	12-8-59	1001	P		EDMN		.064 THK STOCK SIZE						
A	1	1/2 LIP WAS 3/8 5/16 C. WAS 3/16 2-3/8 WAS 1-7/8	5/1/58	1	16	Jase	AM		ALUMINUM						
TOLERANCES								SCALE: FULL		DRAWN		CHECKED		FINAL APPROVAL	
DEC. DIM. ±			MAXIMUM ALLOWABLE TOLERANCES HAVE BEEN DETERMINED AND ANY DEVIATIONS WILL BE CAUSE FOR REJECTION.			5052-H32		N		164/28/58		Jase		alt	
FRAC. DIM. ± 1/64			REMOVE ALL BURRS AND SHARP EDGES			S404-1RIDITE				JM				MS-1229 C	
ANGULAR DIM. ±						FINISH & SPEC. NO.				ELEC. DES. APP.		MECH. DES. APP.			

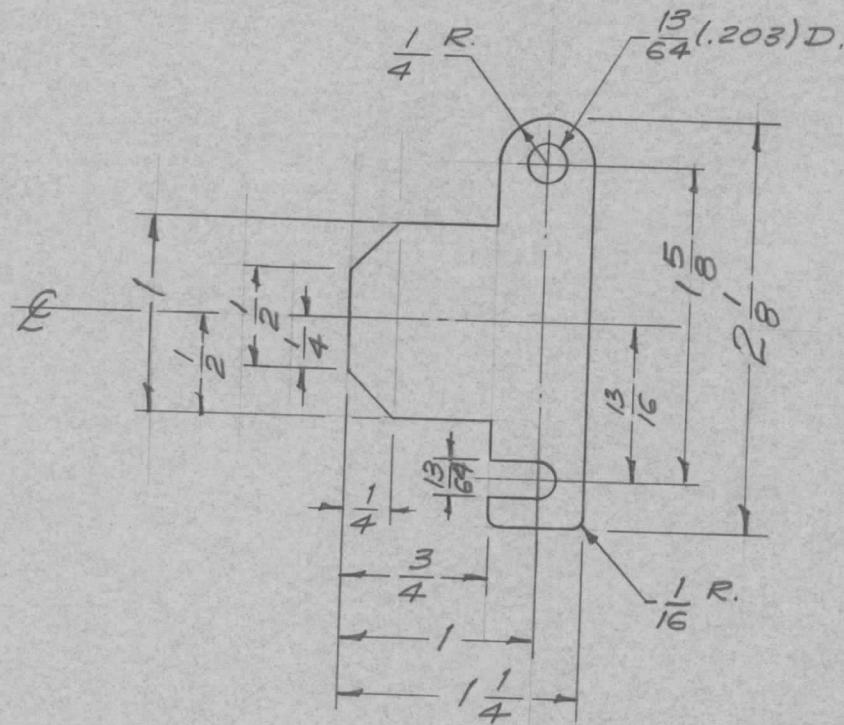
REQ. PER UNIT	USED ON		MS-1230	B
	MODEL	ASS'Y. NO.		
1	PSP-350		4-28-58	



REQ.	ITEM	PART NO.	DESCRIPTION			SYMBOL	
		.051 THK. STOCK SIZE	THE TECHNICAL MATERIEL CORP. MAMARONECK, NEW YORK				
		ALUMINUM	VENT, RIGHT SIDEPLATE				
		MATERIAL					
B	1	S404-YEL. IRIDITE S101-LAUSTIC DIP	12-8 59	1001	P	EMN	
A	1	Notch (3/4 R) WAS 11/16 R Notch Moved UP	6/5/58	1	16	Handwritten initials	
ISSUE	ITEM	CHANGED FROM	DATE	CH. NO.	DRAFTS	CHECKER	ENG. APP.
TOLERANCES			SCALE: FULL				
DEC. DIM. ±			MAXIMUM ALLOWABLE TOLERANCES HAVE BEEN DETERMINED AND ANY DEVIATIONS WILL BE CAUSE FOR REJECTION.				
FRAC. DIM. ± 1/64			REMOVE ALL BURRS AND SHARP EDGES				
ANGULAR DIM. ±							
5052-H32		HEAT TREAT. SPEC.	DRAWN		CHECKED	FINAL APPROVAL	
S404-YEL. IRIDITE		FINISH & SPEC. NO.	ELEC. DES. APP.		MECH. DES. APP.	MS-1230	
			Handwritten signatures and dates			B	



REQ. PER UNIT	USED ON			MS-1231	A
	MODEL	ASS'Y. NO.	DATE		
1	P5P-350		5-1-58		



REQ. ITEM	PART NO.	DESCRIPTION	SYMBOL
	.081 THK.	THE TECHNICAL MATERIEL CORP. MAMARONECK, NEW YORK	A 1
	STOCK SIZE		
	Aluminium	PLATE, CONNECTOR LOCKING	
	MATERIAL		
	5052-H32	1651-58	
	TYPE & TEMPER	DRAWN	
	HEAT TREAT. SPEC.	CHECKED	
	5404-YEL IRIDITE	FINAL APPROVAL	
	FINISH & SPEC. NO.	ELEC. DES. APP.	MECH. DES. APP.
		MS-1231	A

ISSUE	ITEM	CHANGED FROM	DATE	CH. NO.	DRAFTS	CHECKER	ENG. APP.
A	1	5404-YEL-IRIDITE WAS S101-CAUSTIC DIP	12-8 59	1001	P		EMN

TOLERANCES		SCALE: FULL	
DEC. DIM. $\pm$	FRAC. DIM. $\pm$ / 64	MAXIMUM ALLOWABLE TOLERANCES HAVE BEEN DETERMINED AND ANY DEVIATIONS WILL BE CAUSE FOR REJECTION. REMOVE ALL BURRS AND SHARP EDGES	
ANGULAR DIM. $\pm$			