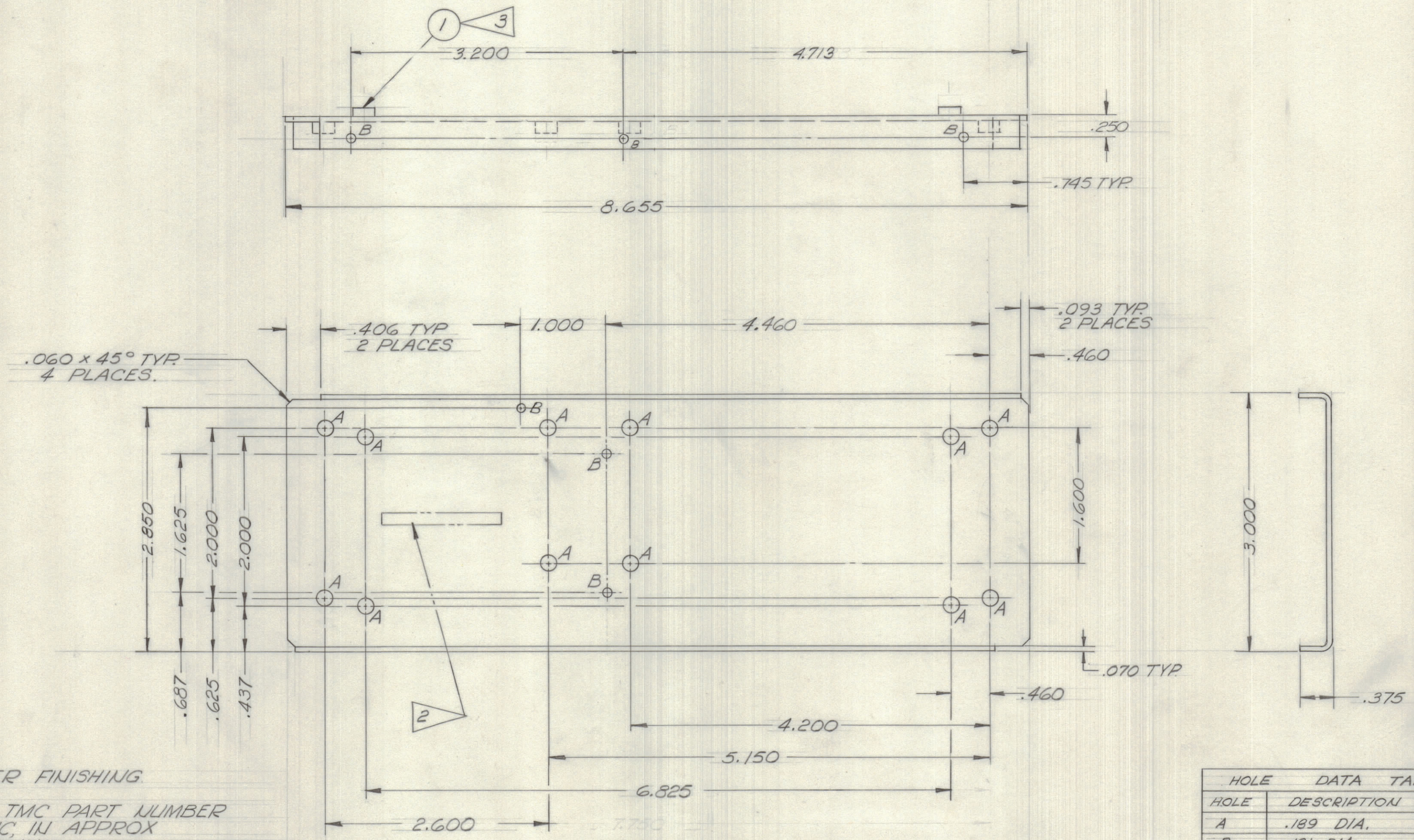


IF IT IS FOUND DESIRABLE TO CHANGE ANY TOLERANCE OR OTHER DETAIL SPECIFIED ON THIS DRAWING NOTIFY THE PURCHASER PROMPTLY.		DIMENSIONS IN INCHES UNLESS OTHERWISE SPECIFIED					
MAXIMUM ALLOWABLE TOLERANCES HAVE BEEN DETERMINED AND DEVIATIONS WILL BE CAUSE FOR REJECTION. REMOVE ALL BURRS AND SHARP EDGES.							
ISSUE	ITEM	CHANGED FROM	DATE	CN. NO.	DRAFTS	CHECKER	ENG. APP.
X		ENG. RELEASE	5 JUN 72		NAT.	H.C.S.	H.C.S.
X <sub>1</sub>		1 VIEW ADDED, 1 'B HOLE ADDED, HORIZONTAL 'B HOLE DIMS. CHANGED	19 OCT 72		C.R.		H.C.S.

REQ.	ITEM	PART NO.	DESCRIPTION	USED ON	REMARKS
12	1	TE 164-6	UNIT, PLAIN, CLINCH	MS11439	'A' HOLES

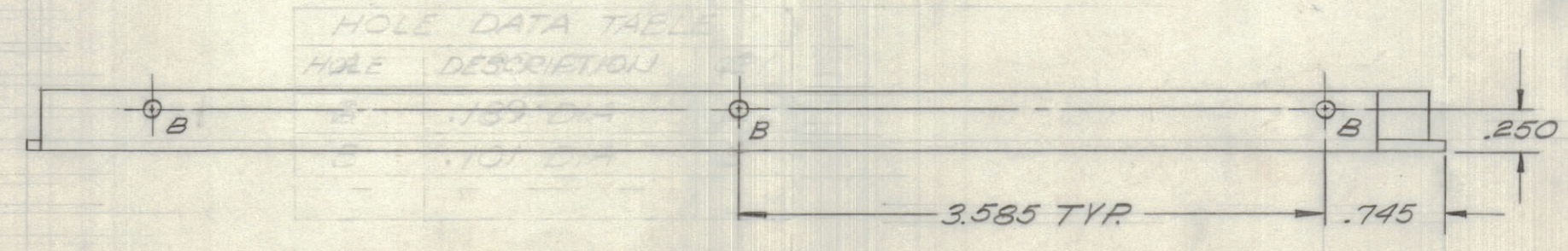


3. INSTALL AFTER FINISHING.

2. METAL STAMP TMC PART NUMBER 1/8 HIGH, GOTHIC, IN APPROX POSITION SHOWN.

1. INSIDE BEND RADIUS, .064 MIN.

NOTES.



TOLERANCES		SCALE: 1:1
ALL	DEC. DIM. ± .05	DRILL, PUNCH, COMMERCIAL STOCK
OTHERS	FRAC. DIM. ± 1/64 .XX*.01	SIZES AND MANUFACTURERS
	ANGULAR DIM. ± 0° 30' .XXX*.005	TOLERANCES ARE NOT INCLUDED.

MMX( )3	5 JUN 72
MODEL	DATE
PROJECT NO.	ASS'Y. NO.

.064 THK		TMC (Canada) LIMITED	
STOCK SIZE		OTTAWA ONTARIO	
AL ALY		CENTER CHANNEL	
MATERIAL WEIGHT PER PC.		SYNTHESIZER MODULE	
57S H32		THOMAS	H.C. SCHAFER
TYPE & TEMPER		DRAWN	ELEC. DES. APP.
		H.C. SCHAFER	MECH. DES. APP.
HEAT TREAT. SPEC.		FINAL APPROVAL	
IRIDITE 5404		MS11439 X <sub>1</sub>	
FINISH & SPEC. NO.			