

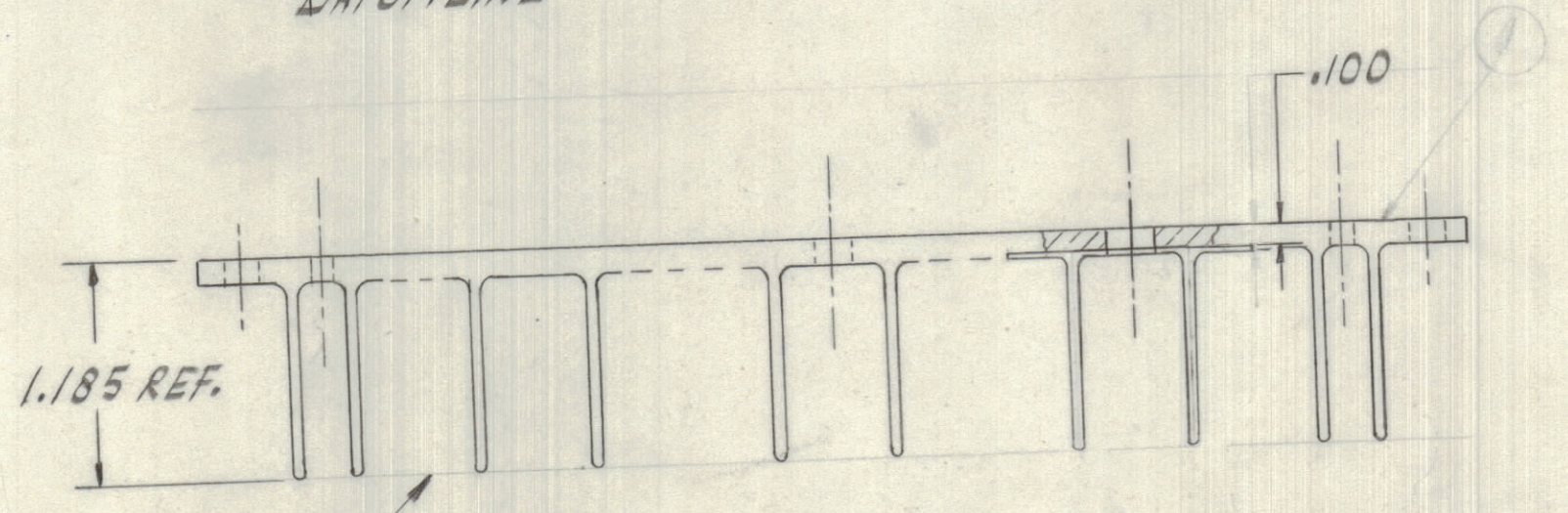
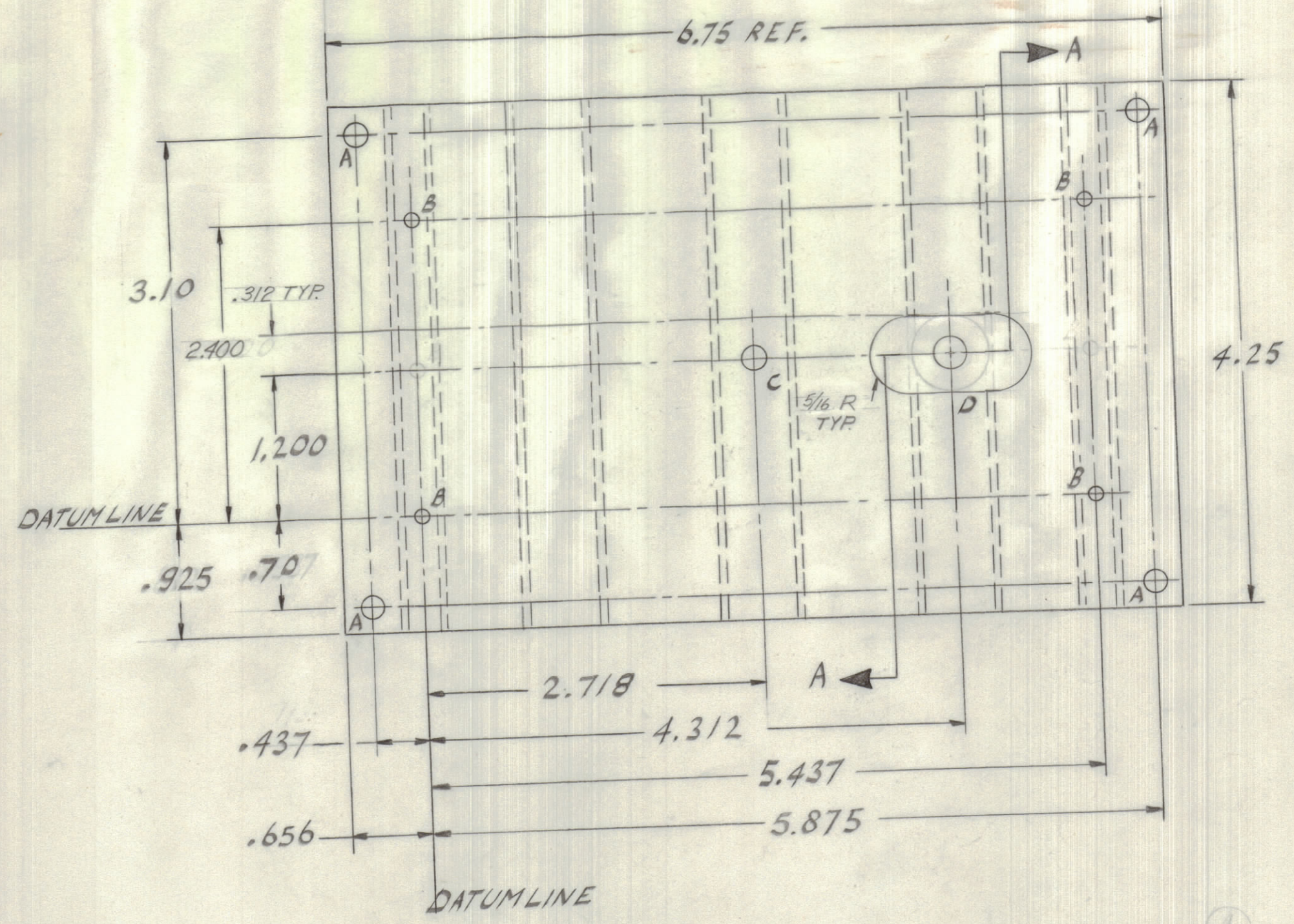
IF IT IS FOUND DESIRABLE TO CHANGE ANY TOLERANCE OR OTHER DETAIL SPECIFIED ON THIS DRAWING NOTIFY THE PURCHASER PROMPTLY.

DIMENSIONS IN INCHES UNLESS OTHERWISE SPECIFIED

MAXIMUM ALLOWABLE TOLERANCES HAVE BEEN DETERMINED AND DEVIATIONS WILL BE CAUSE FOR REJECTION. REMOVE ALL BURRS AND SHARP EDGES.

ISSUE	ITEM	CHANGED FROM	DATE	CH. NO.	DRAFTS	CHECKER	ENG. APP.
X		ENG. RELEASE	JUNE/172		JVR	HCS	HCS
X ₁		TWO "B" HOLES REMOVED .625 SURFACE CHANGED TO .625 SLOT THRU TWO RIBS	31 AL4 72		CC		ACS

A-2494 HEAT SINK EXTRUSION



FINS ONLY PARTLY SHOWN FOR CLARITY
SECTION 'A-A'

HOLE	DESCRIPTION	QTY
A	.189 DIA.	4
B	.125 DIA.	4
C	.201 DIA.	1
D	.290 DIA. THRU MILL .625 x .312 SLOT TO .100 THK.	1

MS11433 X₁

TOLERANCES		SCALE: 1:1
ALL OTHERS	DEC. DIM. ± .05 FRAC. DIM. ± 1/64 ANGULAR DIM. ± 0° 30'	DRILL, PUNCH, COMMERCIAL STOCK SIZES AND MANUFACTURERS TOLERANCES ARE NOT INCLUDED.

LPA 400	PROJECT NO.	A11048	DATE	JUNE 1-72
	ASS'Y. NO.			

A-2494 WAKEFIELD ENGINEERING		TMC (Canada) LIMITED OTTAWA ONTARIO	
STOCK SIZE	ALUM. ALLOY 1.23 LB.	5W. WIDEBAND AMPLIFIER HEAT SINK	
MATERIAL	WEIGHT PER PC.	6063-T5	J. VANRHEE
TYPE & TEMPER	DRAWN	HEAT TREAT SPEC.	H.C. SCHAFER
99-A-200	CHECKED	FINISH & SPEC. NO.	MS11433 X ₁