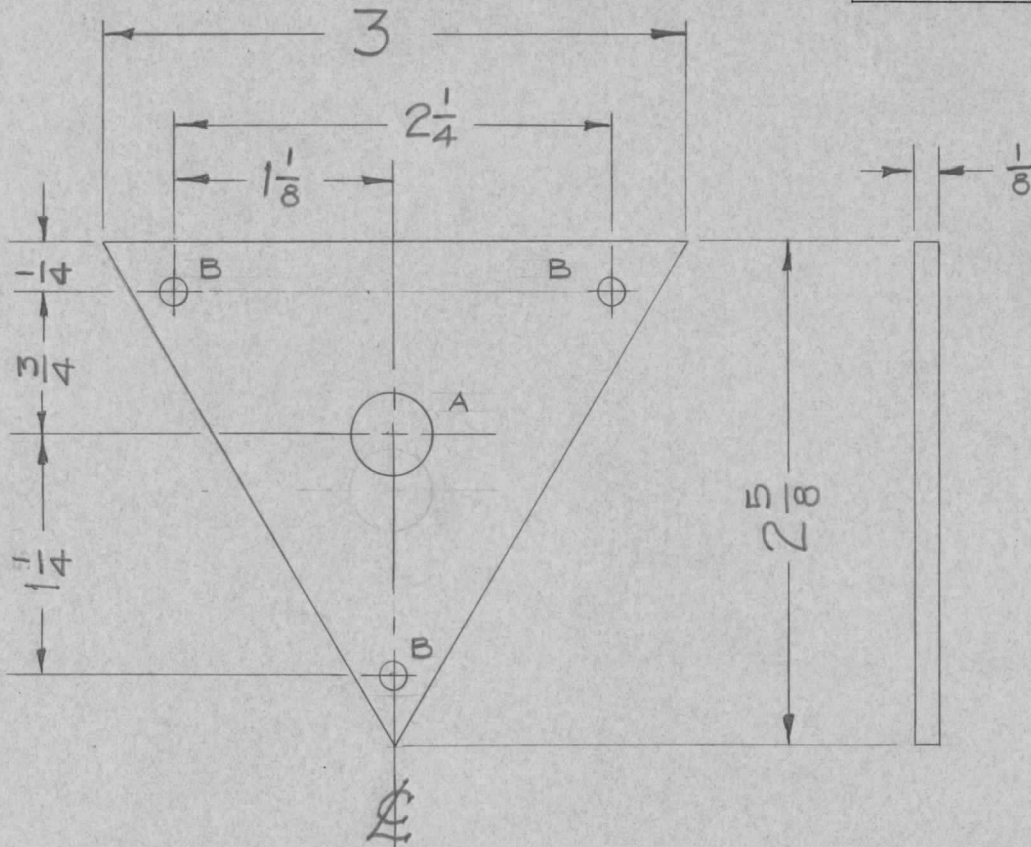


REQ. PER UNIT	USED ON			MS-1101	A
	MODEL	ASS'Y. NO.	DATE		
1	SBE-1		7-17-57		

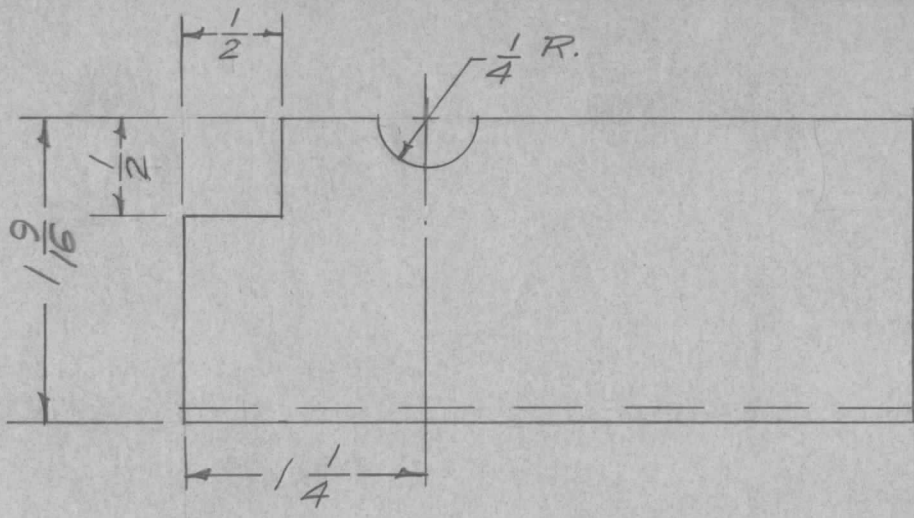


"A" - 7/16 (.437) D. AFTER ETCH. 1 REQ.
 "B" - 5/32 (.156) D. 3 REQ.

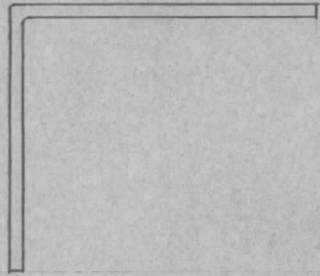
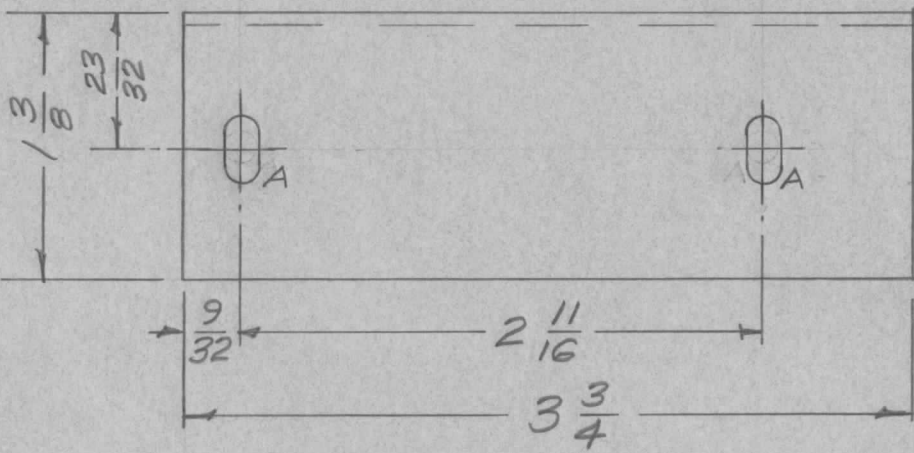
ISSUE	ITEM	CHANGED FROM	DATE	CH. NO.	DRAFTS	CHECKER	ENG. APP.	REQ. ITEM	PART NO.	DESCRIPTION	SYMBOL		
								1/8 SHEET		THE TECHNICAL MATERIEL CORP.			
								STOCK SIZE		MAMARONECK, NEW YORK			
A	1	S404 - IRIDITE WAS S101 - CAUSTIC DIP	12-8 59	1001	P		EMN	ALUMINUM		SUPPORT PLATE, GEAR			
								MATERIAL		SBE-1			
								5052-H32		EC. 7-17-57			
TOLERANCES			SCALE:										
DEC. DIM. ±			MAXIMUM ALLOWABLE TOLERANCES HAVE BEEN DETERMINED AND ANY DEVIATIONS WILL BE CAUSE FOR REJECTION.										
FRAC. DIM. ± 1/64			REMOVE ALL BURRS AND SHARP EDGES										
ANGULAR DIM. ±													
								TYPE & TEMPER	HEAT TREAT. SPEC.	DRAWN	CHECKED	FINAL APPROVAL	
								S404 IRIDITE				MS-1101	A
								FINISH & SPEC. NO.		ELEC. DES. APP.	MECH. DES. APP.		

REQ. PER UNIT	USED ON		
	MODEL	ASS'Y. NO.	DATE
1	SBE-1		7-17-57
1	SBE-2		5-5-58
1	SBE-3	AD-102	12-2-59

MS-1102 A



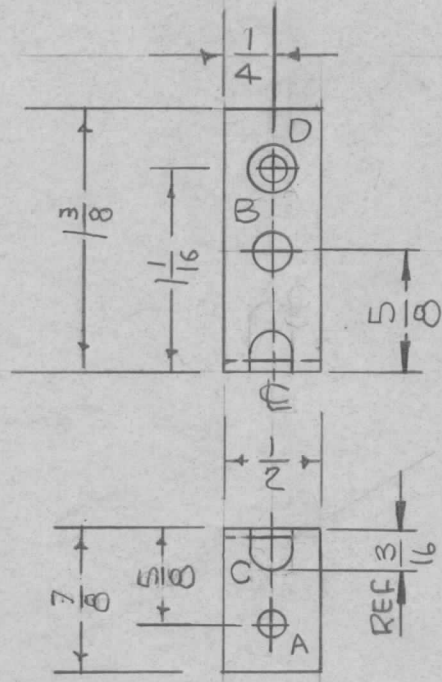
A - 11/64 x 11/32 SLOTS - 2 Req.



ISSUE	ITEM	CHANGED FROM	DATE	CH. NO.	DRAFTS	CHECKER	ENG. APP.	REQ. ITEM	PART NO.	DESCRIPTION	SYMBOL			
										THE TECHNICAL MATERIEL CORP. MAMARONECK, NEW YORK				
										SHIELD, 2-4 Mc OSC.				
A	1	5404-IRIDITE WAS S101-CAUSTIC DIP	12-8 59	1001	P		EMN			SBE-1				
TOLERANCES								SCALE: FULL		5052H32	16 7-17-57	RWB	MS-1102 A	
DEC. DIM. ± FRAC. DIM. ± 1/64 ANGULAR DIM. ±								MAXIMUM ALLOWABLE TOLERANCES HAVE BEEN DETERMINED AND ANY DEVIATIONS WILL BE CAUSE FOR REJECTION. REMOVE ALL BURRS AND SHARP EDGES		ALUMINUM				
								MATERIAL		5404-IRIDITE				
								TYPE & TEMPER						
								HEAT TREAT. SPEC.						
								DRAWN		RWB				
								CHECKED		RWB				
								FINAL APPROVAL						
								ELEC. DES. APP.						
								MECH. DES. APP.						

REQ. PER UNIT	USED ON		
	MODEL	ASS'Y. NO.	DATE
1	SBE-1		7-26-57
1	SBE-2		5-5-58
1	SBE-3 AX-205	A-1460	12-2-59

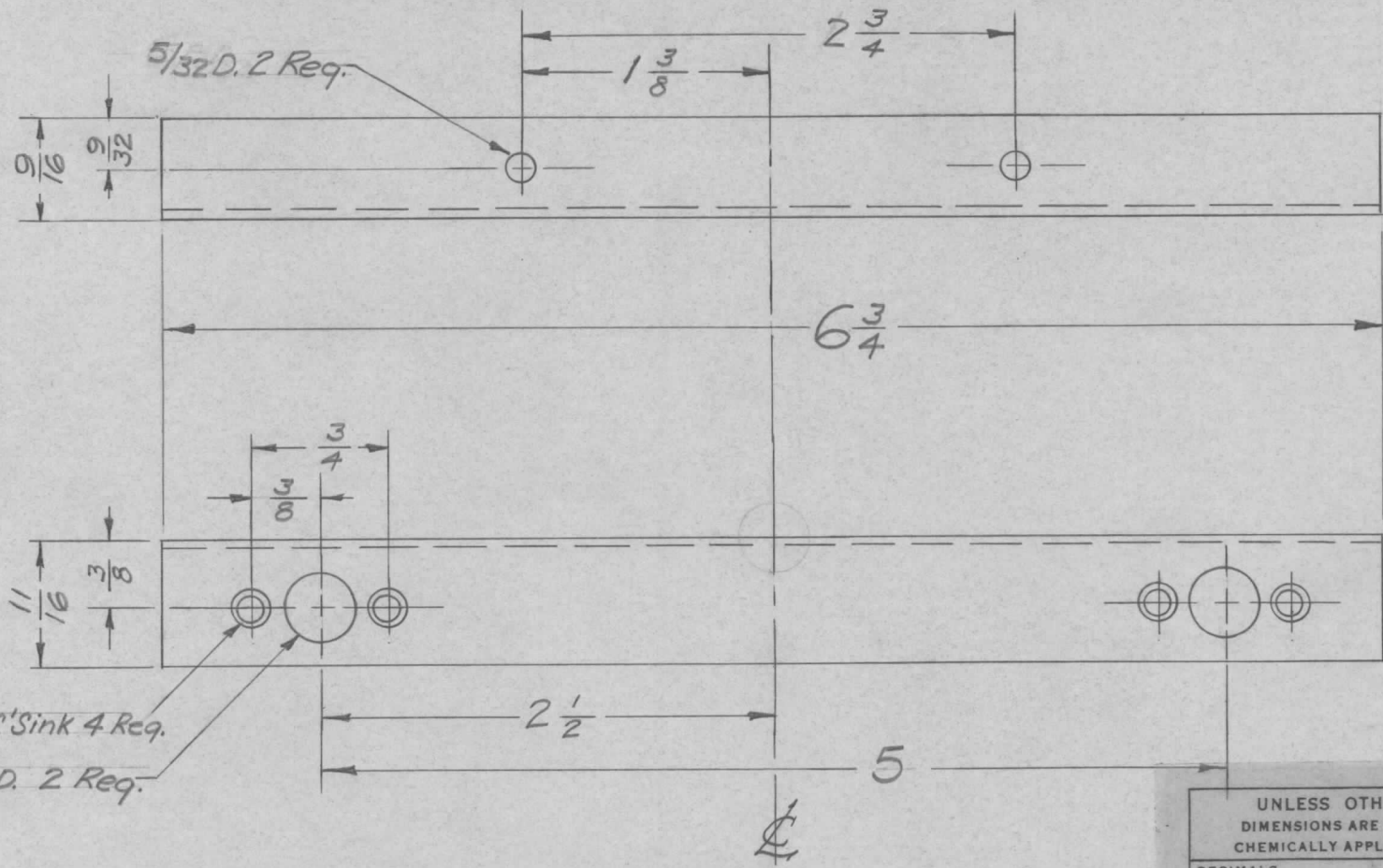
MS-1117 B



A = 1/64 ~ 1 REQ
 B = 3/16 DIA ~ 1 REQ
 C = 7/32 X 3/8 SLOT ~ 1 REQ
 D = .120 DIA C'SK 82° TO .230 DIA ~ 1 REQ

REQ. ITEM	PART NO.	DESCRIPTION	SYMBOL										
	.064	THE TECHNICAL MATERIEL CORP. MAMARONECK, NEW YORK											
B	ADDED "B," "C," & "D" HOLES. DELETED "A" HOLE 7/8 X 5/8 WAS 3/4 X 9/16	BRACKET, RELAY											
A	S404 - IRIDITE WAS 5101 - CAUSTIC DIP	SBE-1											
ISSUE	ITEM	CHANGED FROM	DATE	CH. NO.	DRAFTS	CHECKER	ENG. APP.						
TOLERANCES		SCALE:											
DEC. DIM. ±		MAXIMUM ALLOWABLE TOLERANCES HAVE BEEN DETERMINED AND ANY DEVIATIONS WILL BE CAUSE FOR REJECTION.											
FRAC. DIM. ±		REMOVE ALL BURRS AND SHARP EDGES											
ANGULAR DIM. ±		5052-H32		-11-		DB		16		APB			
		TYPE & TEMPER		HEAT TREAT. SPEC.		DRAWN		CHECKED		FINAL APPROVAL			
		S404-IRIDITE				DB				MS-1117 B			
		FINISH & SPEC. NO.		ELEC. DES. APP.		MECH. DES. APP.							

REQ. PER UNIT	USED ON			MS-1118	A
	MODEL	ASS'Y. NO.	DATE		
2	GSB IIR		7-26-57		



NOTE:
S404-IRIDITE

UNLESS OTHERWISE SPECIFIED
DIMENSIONS ARE IN INCHES AND INCLUDE
CHEMICALLY APPLIED OR PLATED FINISHES

DECIMALS	TOLERANCES	FRACTIONS
.X ± .05		± 1/64
.XX ± .01		ANGLES
.XXX ± .005		± 0° 30'

CUT HERE
GUARANTEED
2-56

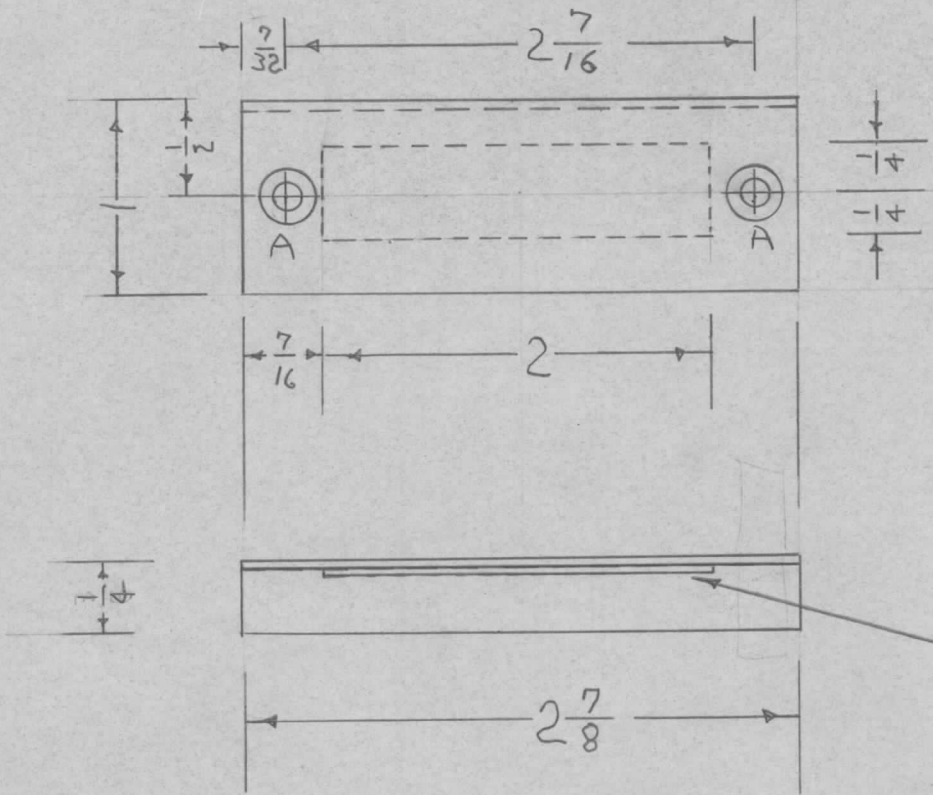
ISSUE	ITEM	CHANGED FROM	DATE	CH. NO.	DRAFTS	CHECKER	ENG. APP.	REQ. ITEM	PART NO.	DESCRIPTION	SYMBOL
									.064	THE TECHNICAL MATERIEL CORP. MAMARONECK, NEW YORK	A
									STOCK SIZE		
									ALUMINUM	BOTTOM COVER BRACKET	
									MATERIAL	GSB-1 MARK II (RACK)	
									5052-H32	SC. 7-26-57	
									TYPE & TEMPER	CHECKED	
									HEAT TREAT. SPEC.	FINAL APPROVAL	
									SEE NOTE		MS-1118
									FINISH & SPEC. NO.	ELEC. DES. APP.	A
										MECH. DES. APP.	

DEC. DIM. ±
FRAC. DIM. ±
ANGULAR DIM. ±

SCALE:
MAXIMUM ALLOWABLE TOLERANCES HAVE
BEEN DETERMINED AND ANY DEVIATIONS
WILL BE CAUSE FOR REJECTION.
REMOVE ALL BURRS AND SHARP EDGES

REQ. PER UNIT	USED ON		
	MODEL	ASS'Y. NO.	DATE
1	SBE-1		8-1-57
1	SBE-2		5-5-58
1	SBE-3	A0-101	11-30-59

MS-1122 B



A w DR. & C'SK 2 REQ.
(FOR 6-32 FHS)

CEMENT FISH PAPER AS SHOWN.
(USE 6L-101-1) 6L-101-1 PLI 63010

FISH PAPER

UNLESS OTHERWISE SPECIFIED DIMENSIONS ARE IN INCHES AND INCLUDE CHEMICALLY APPLIED OR PLATED FINISHES		
DECIMALS	TOLERANCES	FRACTIONS
.X ± .05		± 1/64
.XX ± .01		ANGLES
.XXX ± .005		± 0° 30'

CUT HERE
GUARANTEED
2-66

ISSUE	ITEM	CHANGED FROM	DATE	CH. NO.	DRAFTS	CHECKER	ENG. APP.	REQ. ITEM	PART NO.	DESCRIPTION	SYMBOL	
									.040	THE TECHNICAL MATERIEL CORP. MAMARONECK, NEW YORK	SHIELD, OVEN HEATER	
									STOCK SIZE			
									ALUMINUM			
									MATERIAL	SBE-1		
								11	11	2RB	RWB	AWB
										DRAWN	CHECKED	FINAL APPROVAL
									S404 IRIDITE	2RB	RWB	MS-1122 B
									FINISH & SPEC. NO.	ELEC. DES. APP.	MECH. DES. APP.	

B 1 6-32 C/SNK HOLES ADDED 9-21-60 1987 CS JHE [Signature]

A 1 S404 - IRIDITE WAS 12-8 1001 P [Signature] EMN 59

ISSUE ITEM CHANGED FROM DATE CH. NO. DRAFTS CHECKER ENG. APP.

TOLERANCES SCALE:

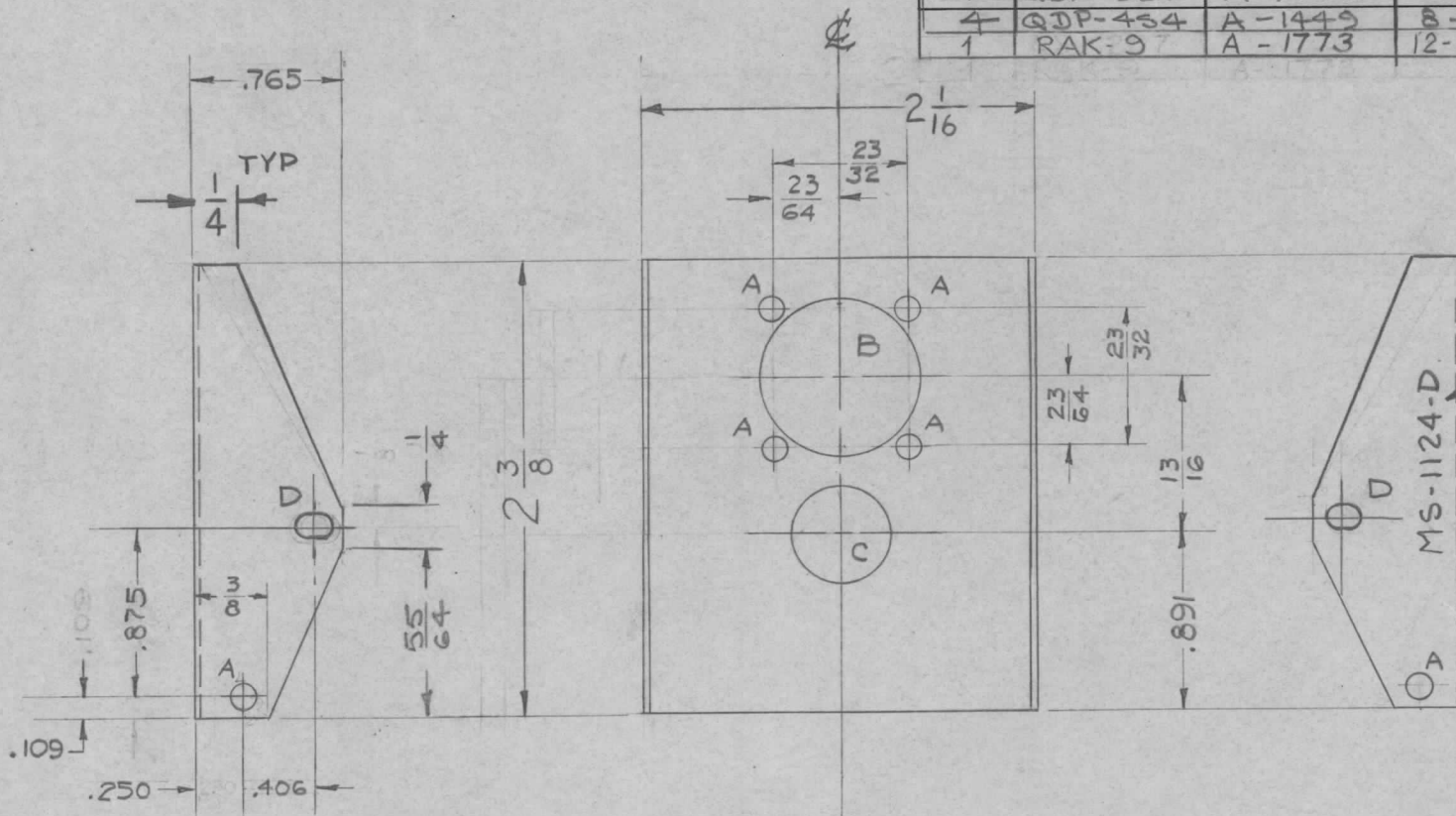
DEC. DIM. ±
FRAC. DIM. ±
ANGULAR DIM. ±

MAXIMUM ALLOWABLE TOLERANCES HAVE BEEN DETERMINED AND ANY DEVIATIONS WILL BE CAUSE FOR REJECTION.
REMOVE ALL BURRS AND SHARP EDGES

REQ. PER UNIT	USED ON		
	MODEL	ASS'Y. NO.	DATE
4	QDP-354	A-1449	8-9-57
4	QDP-454	A-1449	8-9-57
1	RAK-97	A-1773	12-15-60

MS-1124

D



METAL STAMP TMC
PART NO. 1/8 HIGH
GOTHIC.

LEGEND

"A" 1/8 (.125) D. 6 REQ.
"B" 53/64 (.828) D. 1 REQ.
"C" 1/2 (.500) D. 1 REQ.
"D" 1/8 x 3/16 SLOTS - 2 REQ.

NOTE

S404 IRIDITE
S107 CAUSTIC DIP

UNLESS OTHERWISE SPECIFIED
DIMENSIONS ARE IN INCHES AND INCLUDE
CHEMICALLY APPLIED OR PLATED FINISHES

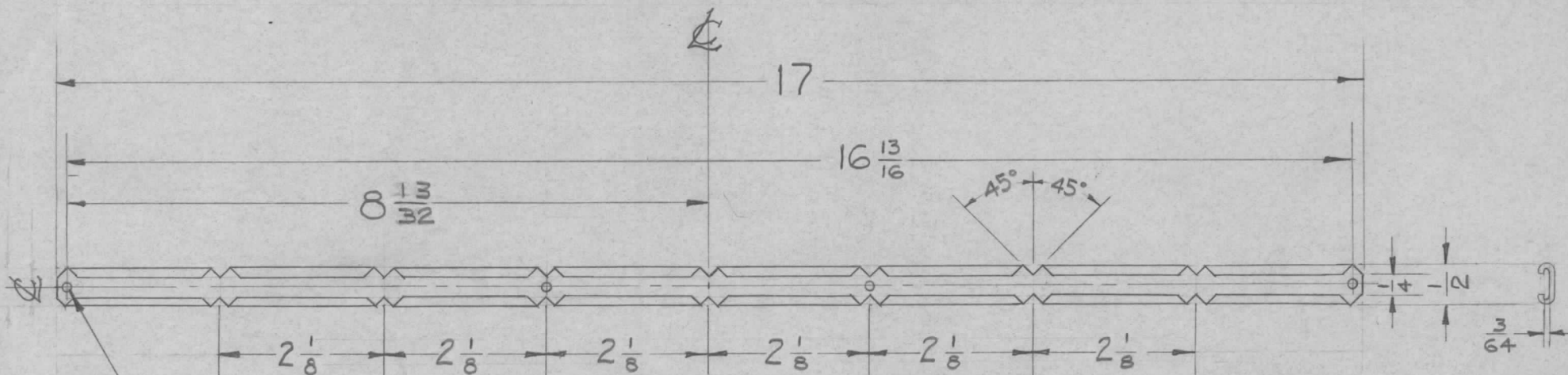
DECIMALS	TOLERANCES	FRACTIONS
.X ± .05		± 1/64
.XX ± .01		ANGLES, ± 0° 30'
.XXX ± .005		

CUT HERE
GUARANTEED
2-66

ISSUE	ITEM	CHANGED FROM	DATE	CH. NO.	DRAFTS	CHECKER	ENG. APP.	REQ. ITEM	PART NO.	DESCRIPTION	SYMBOL		
D	1	(1) "B" HOLE WAS 13/16 DIA.	1-30-63	8117						THE TECHNICAL MATERIEL CORP. MAMARONECK, NEW YORK BRACKET, SWITCH QDP-354	D		
C	1	1/4 Taper was to Base	3-1-61	4295	RU				.051				
B	1	S404 IRIDITE WAS S107 CAUSTIC DIP	12-8 59	1001			EMN		STOCK SIZE				
A	2	(2) "D" Slots added	5/26/59	1048	J.C.B.				ALUMINUM				
A	1	(2) "A" Holes deleted							MATERIAL				
TOLERANCES								SCALE:		5052-H32			
DEC. DIM. ± .005								MAXIMUM ALLOWABLE TOLERANCES HAVE BEEN DETERMINED AND ANY DEVIATIONS WILL BE CAUSE FOR REJECTION.		TYPE & TEMPER	HEAT TREAT. SPEC.	8-9-57	
FRAC. DIM. ± 1/64								REMOVE ALL BURRS AND SHARP EDGES		SEE NOTE			
ANGULAR DIM. ± 2°										FINISH & SPEC. NO.	ELEC. DES. APP.	MECH. DES. APP.	MS-1124

REQ. PER UNIT	USED ON		
	MODEL	ASS'Y. NO.	DATE
1	QDP-38	A-1452	8.9.57
1	QDP-48	A-1452	9.4.57

MS-1125 A



LEGEND

A-#37 DRILL (.107) DIA. 4 REQ.

NOTE

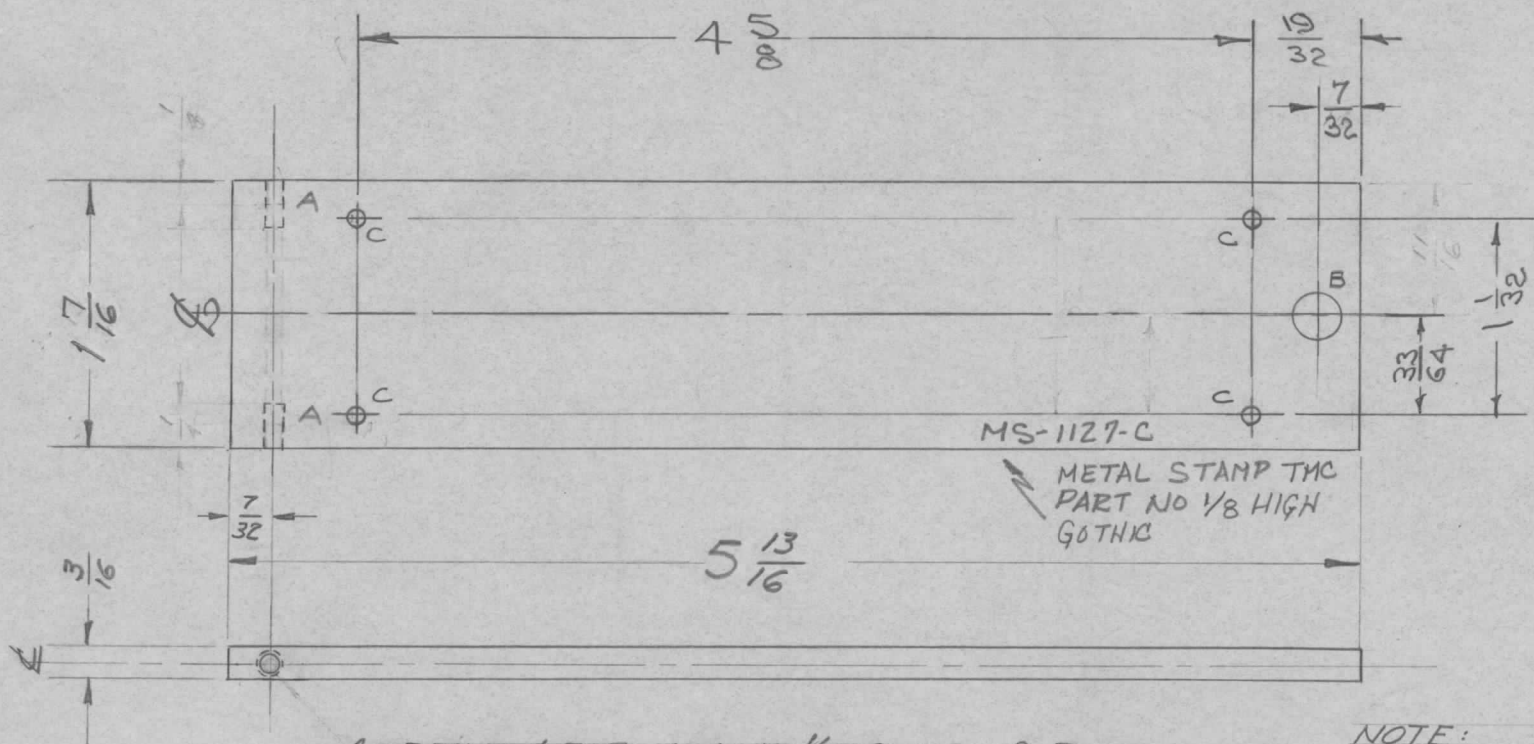
- S404 IRIDITE DIP
- S-114 ZINC CHROMATE PRIMER
- S-115 TMC GRAY

UNLESS OTHERWISE SPECIFIED DIMENSIONS ARE IN INCHES AND INCLUDE CHEMICALLY APPLIED OR PLATED FINISHES		
DECIMALS	TOLERANCES	FRACTIONS
.X ± .05		± 1/64
.XX ± .01		ANGLES
.XXX ± .005		± 0° 30'

CUT HERE
GUARANTEED
2-66

REQ.	ITEM	PART NO.	DESCRIPTION	SYMBOL				
		.020	THE TECHNICAL MATERIEL CORP. MAMARONECK, NEW YORK	A				
		STOCK SIZE						
		ALUMINUM	CARD HOLDER					
		MATERIAL	QDP-38					
A	1	S404-IRIDITE WAS S101-CAUSTIC DIP	8-9-57	EMN				
ISSUE	ITEM	CHANGED FROM	DATE	CH. NO.	DRAFTS	CHECKER	ENG. APP.	
TOLERANCES		SCALE: 1/2		5052-H32		DRAWN		CHECKED
DEC. DIM. ±		MAXIMUM ALLOWABLE TOLERANCES HAVE BEEN DETERMINED AND ANY DEVIATIONS WILL BE CAUSE FOR REJECTION.		TYPE & TEMPER		HEAT TREAT. SPEC.		FINAL APPROVAL
FRAC. DIM. ± 1/64		REMOVE ALL BURRS AND SHARP EDGES		SEE NOTE				MS-1125 A
ANGULAR DIM. ±				FINISH & SPEC. NO.		ELEC. DES. APP.		MECH. DES. APP.

REQ. PER UNIT	USED ON			MS-1127	C
	MODEL	ASS'Y. NO.	DATE		
1	GPR90RX		8-15-57		



- A. DRILL & TAP 4-40 X 1/4 DEEP 2 REQ.
- B. 1/4 (.250) D. 1 REQ. AFTER PLATING
- C. #47 (.078) DRILL 4 REQ. PAINT FRONT, REAR & EDGES

NOTE:
 S404 IRIDITE
 S-114 ZINC CHROMATE PRIMER
 S-115 SMOOTH GRAY ENAMEL
 OR PRIME & PAINT TO CUSTOMERS SPECIFICATION

REF: MS-1128

UNLESS OTHERWISE SPECIFIED DIMENSIONS ARE IN INCHES AND INCLUDE CHEMICALLY APPLIED OR PLATED FINISHES	
DECIMALS	FRACTIONS
.X ± .05	± 1/64
.XX ± .01	ANGLES ± 0° 30'
.XXX ± .005	

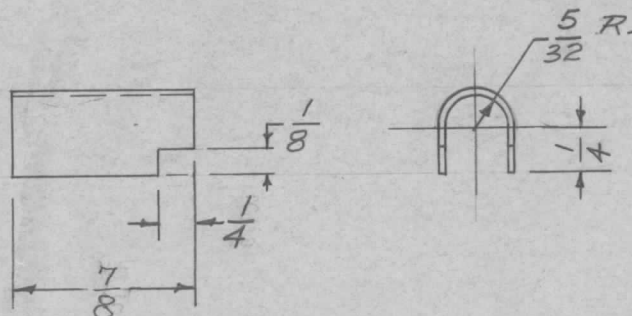
CUT HERE GUARANTEED 2-66

REQ.	ITEM	PART NO.	DESCRIPTION	SYMBOL											
C	1	(4) "C" HOLES WERE *50DR.	11-12-62 7643	Handwritten initials											
B	1	S404 - IRIDITE WAS 3101 CAUSTIC DIP	12-B 59 1001	EMN											
A	1	1 7/16 WAS 1 13/32	10/29/57 1	Handwritten initials											
ISSUE		ITEM	CHANGED FROM	DATE	CH. NO.	DRAFTS	CHECKER	ENG. APP.	MATERIAL		DESCRIPTION		SYMBOL		
TOLERANCES		SCALE:		245-T3		fc. 8.15.57		Handwritten initials		A.J.J.		MS-1127		C	
DEC. DIM. ±		MAXIMUM ALLOWABLE TOLERANCES HAVE BEEN DETERMINED AND ANY DEVIATIONS WILL BE CAUSE FOR REJECTION.		TYPE & TEMPER		HEAT TREAT. SPEC.		DRAWN		CHECKED		FINAL APPROVAL			
FRAC. DIM. ± 1/64		REMOVE ALL BURRS AND SHARP EDGES		SEE NOTE		P.L.K.		Handwritten initials							
ANGULAR DIM. ±				FINISH & SPEC. NO.		ELEC. DES. APP.		MECH. DES. APP.							

REQ. PER UNIT	USED ON		
	MODEL	ASS'Y. NO.	DATE
2	SBE-1		8-22-57
2	SBE-2		5-5-58
2	SBE-3	AX-204	11-30-59
3	CHG-2		8-8-61

MS-1129

A



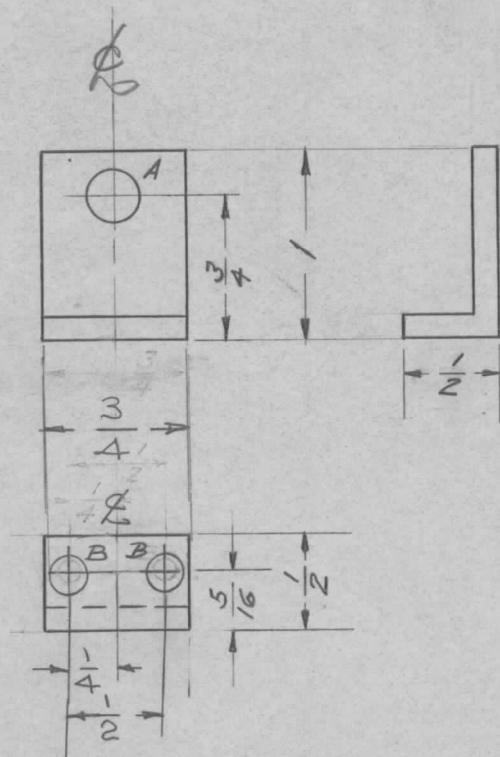
UNLESS OTHERWISE SPECIFIED
DIMENSIONS ARE IN INCHES AND INCLUDE
CHEMICALLY APPLIED OR PLATED FINISHES

DECIMALS	TOLERANCES	FRACTIONS
.X ± .05		± 1/64
.XX ± .01		ANGLES
.XXX ± .005		± 0° 30'

CUT HERE
GUARANTEED
2-66

ISSUE	ITEM	CHANGED FROM	DATE	CH. NO.	DRAFTS	CHECKER	ENG. APP.	REQ. ITEM	PART NO.	DESCRIPTION	SYMBOL		
									.025 Thk.	THE TECHNICAL MATERIEL CORP. MAMARONECK, NEW YORK			
									STOCK SIZE				
									COPPER		SHIELD, TUBE SOCKET		
									MATERIAL				
A	1	7/8 was 1	1/15/58	1	JMS	VB	AWB		SOFT	16 8/22/57	AWB		
TOLERANCES			SCALE: FULL										
DEC. DIM. ±			MAXIMUM ALLOWABLE TOLERANCES HAVE BEEN DETERMINED AND ANY DEVIATIONS WILL BE CAUSE FOR REJECTION. REMOVE ALL BURRS AND SHARP EDGES					TYPE & TEMPER		HEAT TREAT. SPEC.	DRAWN	CHECKED	FINAL APPROVAL
FRAC. DIM. ± 1/64								5245 Silver Plate					
ANGULAR DIM. ±								FINISH & SPEC. NO.		ELEC. DES. APP.	MECH. DES. APP.	MS-1129	A

REQ. PER UNIT	USED ON			MS-1133	D
	MODEL	ASS'Y. NO.	DATE		
1	GPR-90-RX		8-22-57		



LEGEND
 A. 17/64 (.265) 1 REQ.
 B. 5/32 (.156) D. 4-10 2 REQ.

NOTE
 S-404 IRIDITE
 S-107 LACQUER

UNLESS OTHERWISE SPECIFIED
 DIMENSIONS ARE IN INCHES AND INCLUDE
 CHEMICALLY APPLIED OR PLATED FINISHES

DECIMALS	FRACTIONS
.X ± .05	± 1/64
.XX ± .01	ANGLES
.XXX ± .005	± 0° 30'

TOLERANCES

CUT HERE
 GUARANTEED
 2-66

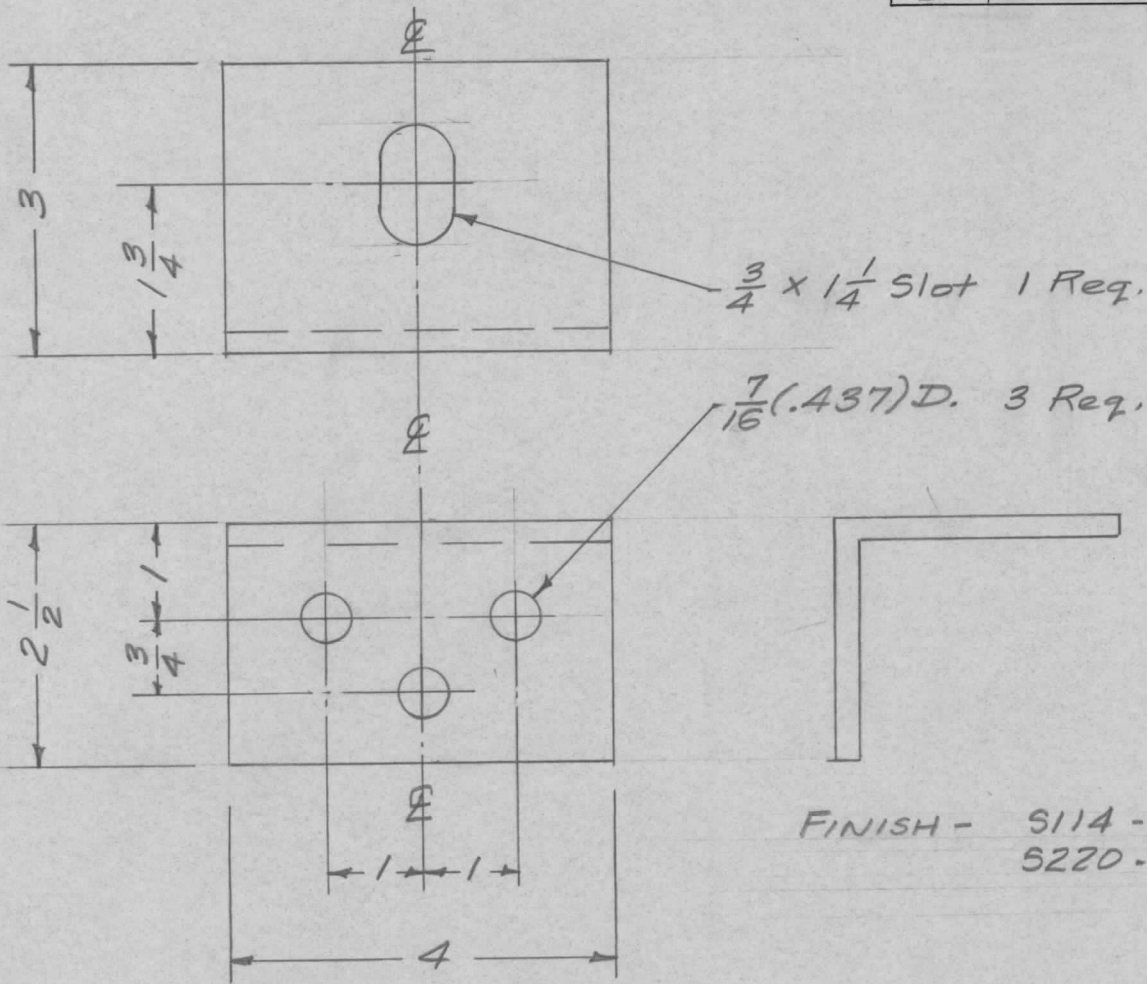
ISSUE	ITEM	CHANGED FROM	DATE	CH. NO.	DRAFTS	CHECKER	ENG. APP.	REQ. ITEM	PART NO.	DESCRIPTION	SYMBOL						
D	1	"B" holes were 3/16 (.187) D.	4/26/61	4681	DAM	JCB	[Signature]										
C	1	STOCK .081 WAS 1X1/2XV8	5-23-60	2360	CW	JCB	[Signature]										
B	1	S404-IRIDITE WAS S101-CAUSTIC DIP	12-8 59	1001	P	JCB	[Signature]										
A	1	"B" holes were 1/8 D	10/23/57	1	[Signature]	LB	[Signature]										
TOLERANCES DEC. DIM. ± FRAC. DIM. ± 1/64 ANGULAR DIM. ±								SCALE: MAXIMUM ALLOWABLE TOLERANCES HAVE BEEN DETERMINED AND ANY DEVIATIONS WILL BE CAUSE FOR REJECTION. REMOVE ALL BURRS AND SHARP EDGES		6063-75 TYPE & TEMPER SEE NOTE FINISH & SPEC. NO.		HEAT TREAT. SPEC. DRAWN P.L.K. ELEC. DES. APP.		DATE 8-22-57 CHECKED [Signature] MECH. DES. APP.		FINAL APPROVAL [Signature] MS-1133	

THE TECHNICAL MATERIEL CORP.
 MAMARONECK, NEW YORK

BRACKET, SWITCH

GPR-90 RX

REQ. PER UNIT	USED ON			MS-1134
	MODEL	ASS'Y. NO.	DATE	
2	GPT-750	ID-186	8-29-57	



FINISH - S114 - ZINC CHROMATE PRIMER
S220 - RCAF GREY WRINKLE ENAMEL

UNLESS OTHERWISE SPECIFIED DIMENSIONS ARE IN INCHES AND INCLUDE CHEMICALLY APPLIED OR PLATED FINISHES		
DECIMALS	TOLERANCES	FRACTIONS
.X ± .05		± 1/64
.XX ± .01		ANGLES
.XXX ± .005		± 0° 30'

CUT HERE
GUARANTEED
2-66

ISSUE	ITEM	CHANGED FROM	DATE	CH. NO.	DRAFTS	CHECKER	ENG. APP.	REQ. ITEM	PART NO.	DESCRIPTION	SYMBOL
								3 x 2 1/2 x 1/8	4	THE TECHNICAL MATERIEL CORP. MAMARONECK, NEW YORK	
								STOCK SIZE		BRACKET, SHOCK MTG.	
								MATERIAL		CAB. & FRAME	GPT-750
										16 8/29/57	
										Checked	
										Final Approval	
											MS-1134

TOLERANCES
DEC. DIM. ±
FRAC. DIM. ± 1/64
ANGULAR DIM. ±

SCALE: 1/2

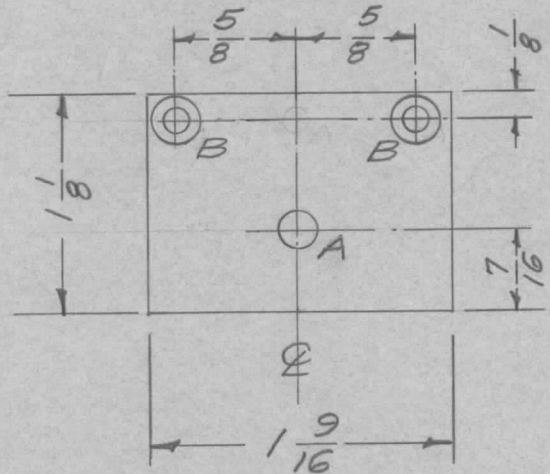
MAXIMUM ALLOWABLE TOLERANCES HAVE BEEN DETERMINED AND ANY DEVIATIONS WILL BE CAUSE FOR REJECTION.
REMOVE ALL BURRS AND SHARP EDGES

TYPE & TEMPER HEAT TREAT. SPEC. DRAWN CHECKED FINAL APPROVAL

SEE NOTE

FINISH & SPEC. NO. ELEC. DES. APP. MECH. DES. APP.

REQ. PER UNIT	USED ON			MS-1135	A
	MODEL	ASS'Y. NO.	DATE		
1	A-1461	A-1461	9-10-57		



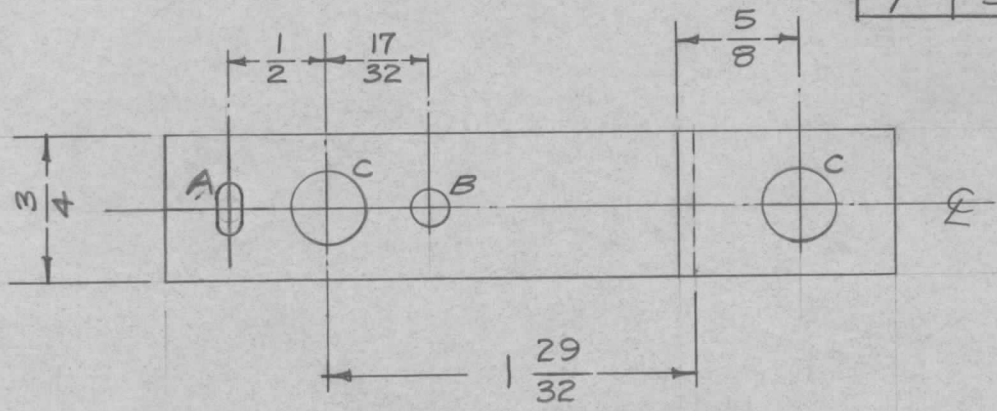
Mount TE-108-18 as shown

A - $\frac{1}{2}$ (.125) D. 2 Req.
 A - .189 D. 1 Req. for mtg. of TE-108-18
 B - $\frac{1}{2}$ (.125) D. 2 Req. (for #4 FHS)
 #31 Dr. (.120)

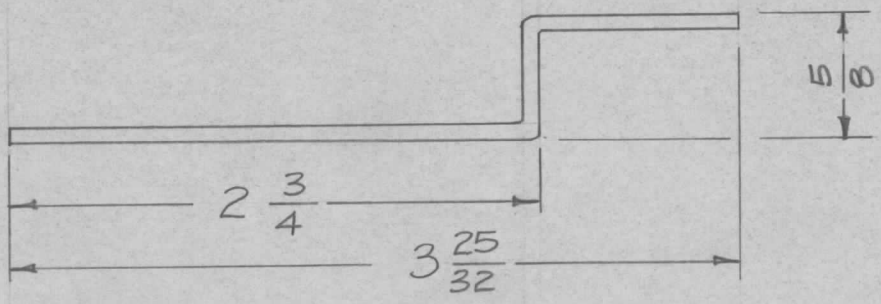
REQ.	ITEM	PART NO.	DESCRIPTION				SYMBOL
		.064 Thk.	THE TECHNICAL MATERIEL CORP.				
		STOCK SIZE	MAMARONECK, NEW YORK				
		Aluminum	CHASSIS, REJECTION NETWORK				
		MATERIAL					
A	1	S404-IRIDITE WAS S101-CAUSTIC DIP	12-8 59	1001	EMN		
ISSUE	ITEM	CHANGED FROM	DATE	CH. NO.	DRAFTS	CHECKER	ENG. APP.
TOLERANCES			SCALE: FULL				
DEC. DIM. \pm			MAXIMUM ALLOWABLE TOLERANCES HAVE BEEN DETERMINED AND ANY DEVIATIONS WILL BE CAUSE FOR REJECTION.				
FRAC. DIM. \pm 1/64			REMOVE ALL BURRS AND SHARP EDGES				
ANGULAR DIM. \pm							
		5052-H32	16 9/10/57				
		TYPE & TEMPER	HEAT TREAT. SPEC.	DRAWN	CHECKED	FINAL APPROVAL	
		S404-IRIDITE				MS-1135 A	
		FINISH & SPEC. NO.	ELEC. DES. APP.	MECH. DES. APP.			

REQ. PER UNIT	USED ON		
	MODEL	ASS'Y. NO.	DATE
1	SBE-1		10-10-57
1	SBE-2		5-5-58
1	SBE-3	AP-101	11-30-59

MS-1155 A



- A - 1/8 x 1/4 SLOT. 1 Req.
- B - 3/16 (.187) D. 1 Req.
- C - 13/32 (.406) D. 2 Req.



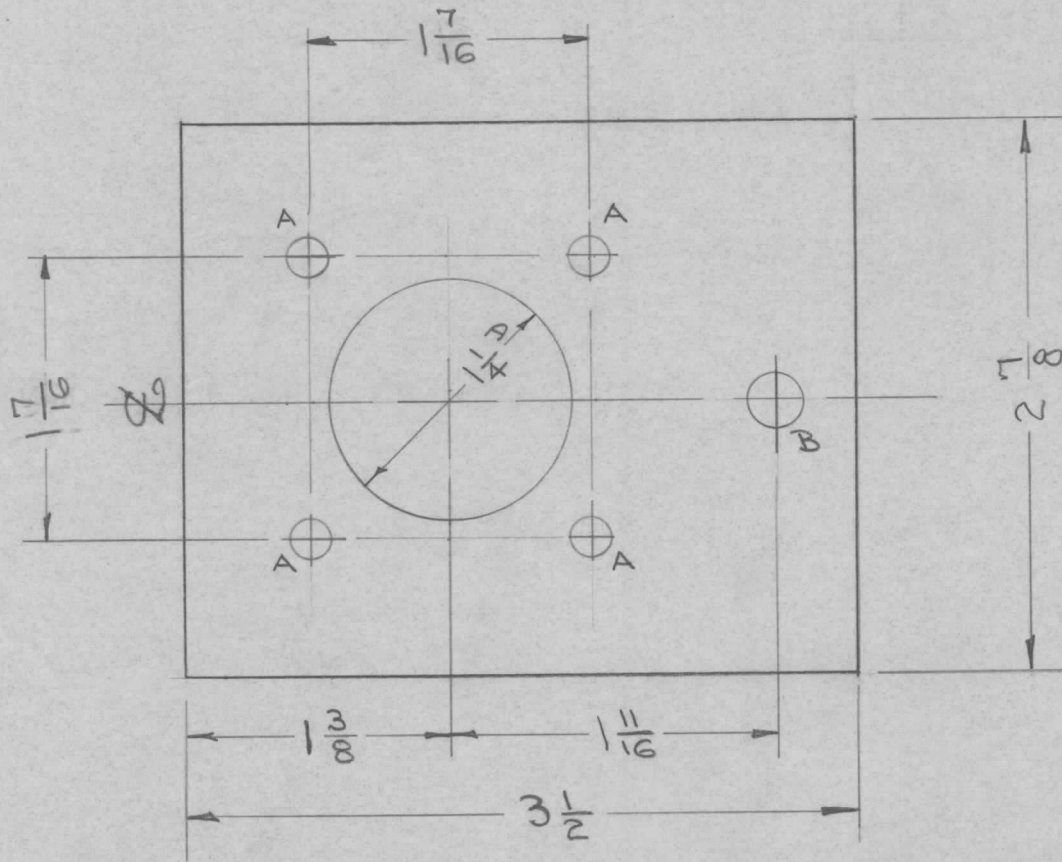
UNLESS OTHERWISE SPECIFIED
DIMENSIONS ARE IN INCHES AND INCLUDE
CHEMICALLY APPLIED OR PLATED FINISHES

DECIMALS	TOLERANCES	FRACTIONS
.X ± .05		± 1/64
.XX ± .01		ANGLES
.XXX ± .005		± 0° 30'

CUT HERE
GUARANTEED
2-66

ISSUE	ITEM	CHANGED FROM	DATE	CH. NO.	DRAFTS	CHECKER	ENG. APP.	REQ. ITEM	PART NO.	DESCRIPTION	SYMBOL			
									.081 THK STOCK SIZE	THE TECHNICAL MATERIEL CORP. MAMARONECK, NEW YORK				
A	1	S404-IRIDITE WAS S101-CAUSTIC DIP	12-8 59	1001	P		EMN		Aluminum	BRACKET, POTENTIOMETER, R135 (SBE-1)				
TOLERANCES								SCALE: FULL		5052-H32	1610-10-57			
DEC. DIM. ± FRAC. DIM. ± ANGULAR DIM. ±								MAXIMUM ALLOWABLE TOLERANCES HAVE BEEN DETERMINED AND ANY DEVIATIONS WILL BE CAUSE FOR REJECTION. REMOVE ALL BURRS AND SHARP EDGES		TYPE & TEMPER	HEAT TREAT. SPEC.	DRAWN	CHECKED	FINAL APPROVAL
								S404-IRIDITE						
								FINISH & SPEC. NO.		ELEC. DES. APP.	MECH. DES. APP.	MS-1155 A		

REQ. PER UNIT	USED ON			MS-1156	A
	MODEL	ASS'Y. NO.	DATE		
1	TER-3500-70	A-1472	10-18-57		
1	TER-500-70	A-1475	10-18-57		

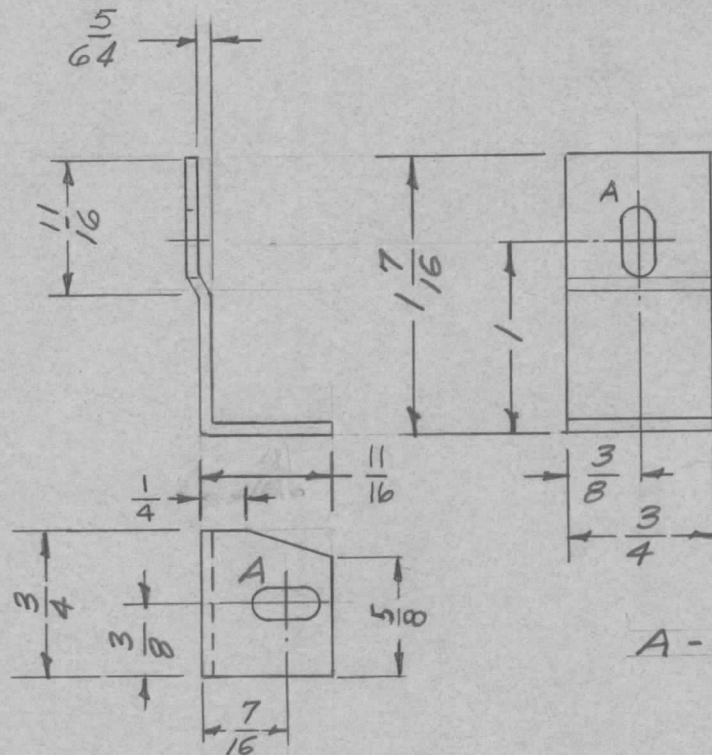


A - 13/64 D = 4 HOLES
 B - 9/32 D = 1 HOLE

ISSUE	ITEM	CHANGED FROM	DATE	CH. NO.	DRAFTS	CHECKER	ENG. APP.	REQ. ITEM	PART NO.	DESCRIPTION	SYMBOL		
									.064	THE TECHNICAL MATERIEL CORP. MAMARONECK, NEW YORK			
									STOCK SIZE				
									ALUMINUM	STIFFENER, COVER			
									MATERIAL				
A	1	5404-IRIDITE WAS S101-CAUSTIC DIP	12-B 59	1001	SP		EMN						
								5052-H32		ADD 10/18/57	16		
TOLERANCES								SCALE: $\frac{1}{2}$					
DEC. DIM. \pm FRAC. DIM. \pm 1/64 ANGULAR DIM. \pm								MAXIMUM ALLOWABLE TOLERANCES HAVE BEEN DETERMINED AND ANY DEVIATIONS WILL BE CAUSE FOR REJECTION. REMOVE ALL BURRS AND SHARP EDGES					
								TYPE & TEMPER	HEAT TREAT. SPEC.	DRAWN	CHECKED	FINAL APPROVAL	
								5404 IRIDITE		RAF		MS-1156	A
								FINISH & SPEC. NO.	ELEC. DES. APP.	MECH. DES. APP.			

REQ. PER UNIT	USED ON		
	MODEL	ASS'Y. NO.	DATE
1	SBE-1		10-21-57
1	SBE-2		5-5-58

MS-1158 C

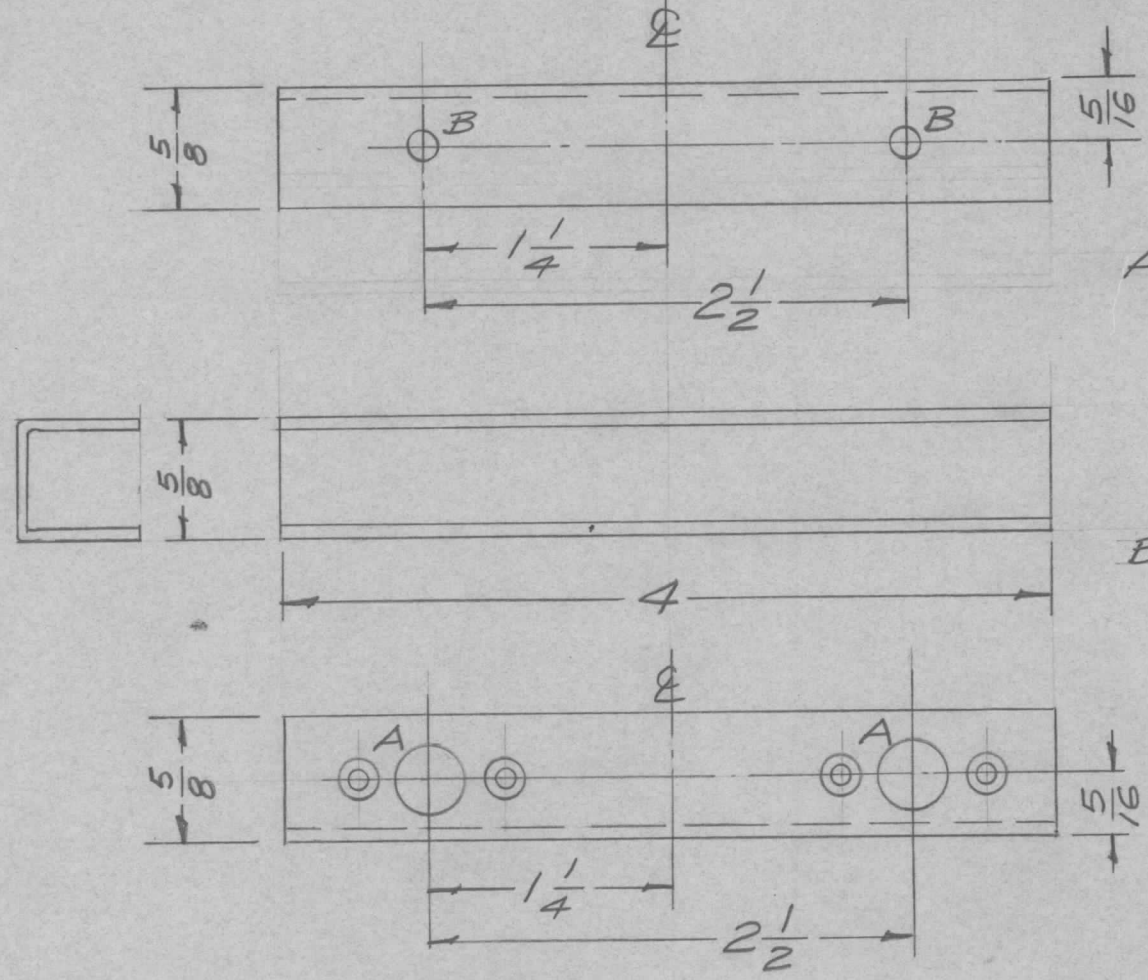


A - $\frac{11}{64} \times \frac{11}{32}$ Slot - 2 Req.

ISSUE	ITEM	CHANGED FROM	DATE	CH. NO.	DRAFTS	CHECKER	ENG. APP.	REQ. ITEM	PART NO.	DESCRIPTION	SYMBOL	
C	1	DIM. $\frac{1}{4}$ & $\frac{5}{8}$ ADD. TO PICT.	2-18-65	13550	J.P.	JCB		.064		THE TECHNICAL MATERIEL CORP. MAMARONECK, NEW YORK		
B	1	S404- IRIDITE WAS S101- CAUSTIC DIP	12-8 59	1001	P		EMN	STOCK SIZE		BRACKET, SUPPORT, AUDIO CHASSIS		
A	1	ADDED $\frac{5}{64}$ BEND TO $\frac{17}{16}$ LENGTH	8/11/63	419	PK			ALUMINUM				
TOLERANCES								MATERIAL				
DEC. DIM. \pm			SCALE: FULL		1-1181		5052-H32		16 ¹⁹ /21/57		JCB	
FRAC. DIM. \pm $\frac{1}{64}$							TYPE & TEMPER		DRAWN		CHECKED	
ANGULAR DIM. \pm							S404-IRIDITE		□		20	
MAXIMUM ALLOWABLE TOLERANCES HAVE BEEN DETERMINED AND ANY DEVIATIONS WILL BE CAUSE FOR REJECTION. REMOVE ALL BURRS AND SHARP EDGES								FINISH & SPEC. NO.		ELEC. DES. APP.		MECH-DES. APP.
										MS-1158 C		C

REQ. PER UNIT	USED ON		
	MODEL	ASS'Y. NO.	DATE
1	ATS-50TU		2-24-58
1	ATS-70TU		2-24-58

MS-1161 A

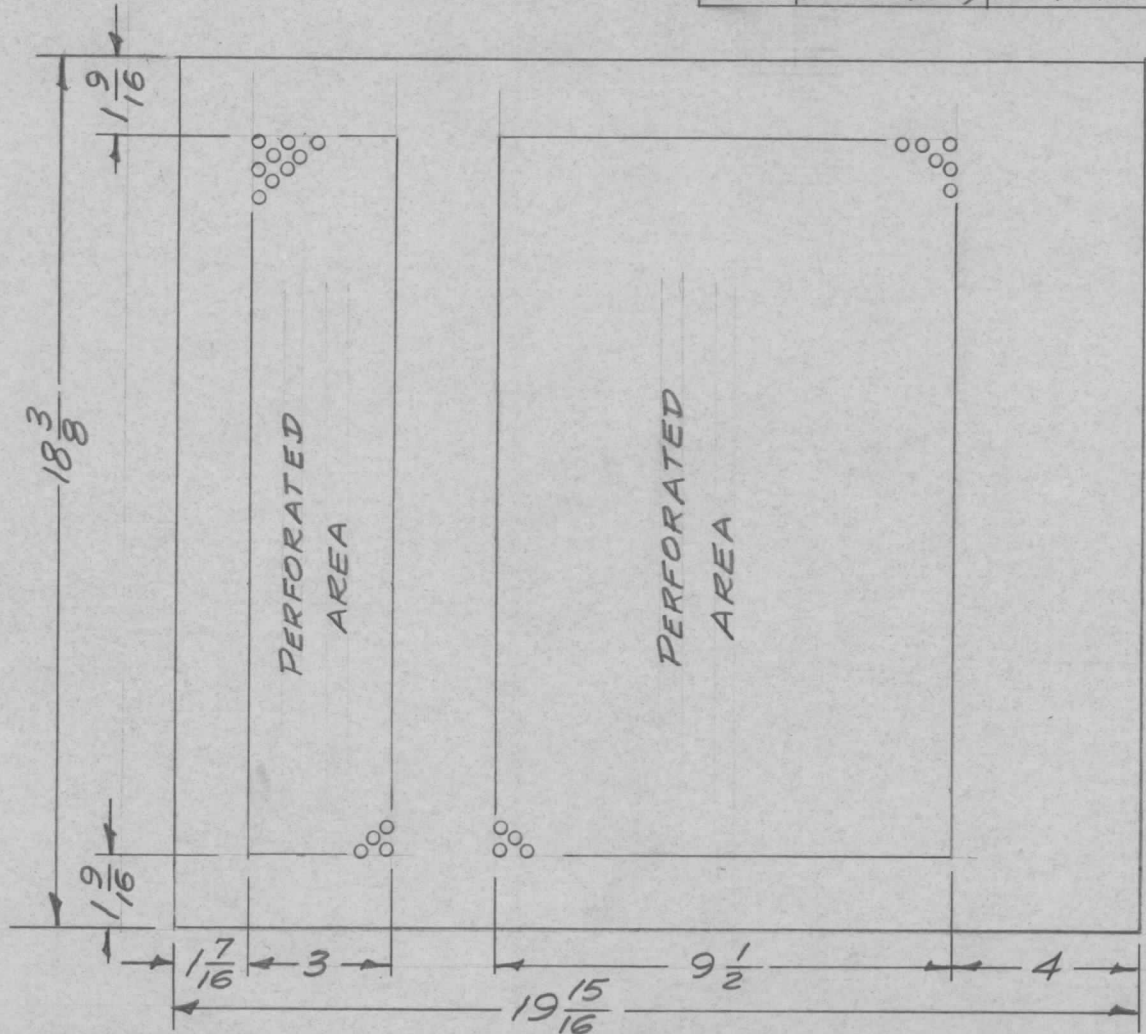


A - 2 Req. -
 #37 (.104) D. Dr.
 .204 D.
 82°
 .375 D.
 3/8
 3/4
 B - 1/64 (.171) Diam. 2 Req.

ISSUE	ITEM	CHANGED FROM	DATE	CH. NO.	DRAFTS	CHECKER	ENG. APP.	REQ. ITEM	PART NO.	DESCRIPTION	SYMBOL		
									.064 Thk.	THE TECHNICAL MATERIEL CORP. MAMARONECK, NEW YORK	A		
									STOCK SIZE				
									Aluminum	BRACKET, MTG, DESICCANT COVER			
									MATERIAL				
A	1	5404 - IRIDITE WAS 5101 - CAUSTIC DIP	12-8 59	1001	P		EMN	5052-H32		16 2/24/58	JAR		
TOLERANCES			SCALE: FULL					TYPE & TEMPER		HEAT TREAT. SPEC.	DRAWN	CHECKED	FINAL APPROVAL
DEC. DIM. ± FRAC. DIM. ± 1/64 ANGULAR DIM. ±			MAXIMUM ALLOWABLE TOLERANCES HAVE BEEN DETERMINED AND ANY DEVIATIONS WILL BE CAUSE FOR REJECTION. REMOVE ALL BURRS AND SHARP EDGES					5404-IRIDITE					MS-1161 A
								FINISH & SPEC. NO.		ELEC. DES. APP.	MECH. DES. APP.		

REQ. PER UNIT	USED ON		
	MODEL	ASS'Y. NO.	DATE
1	GPR-90(R)	MS-639	11-18-57
1	GPR-90(RX)	MS-1140	11-18-57

MS-1162

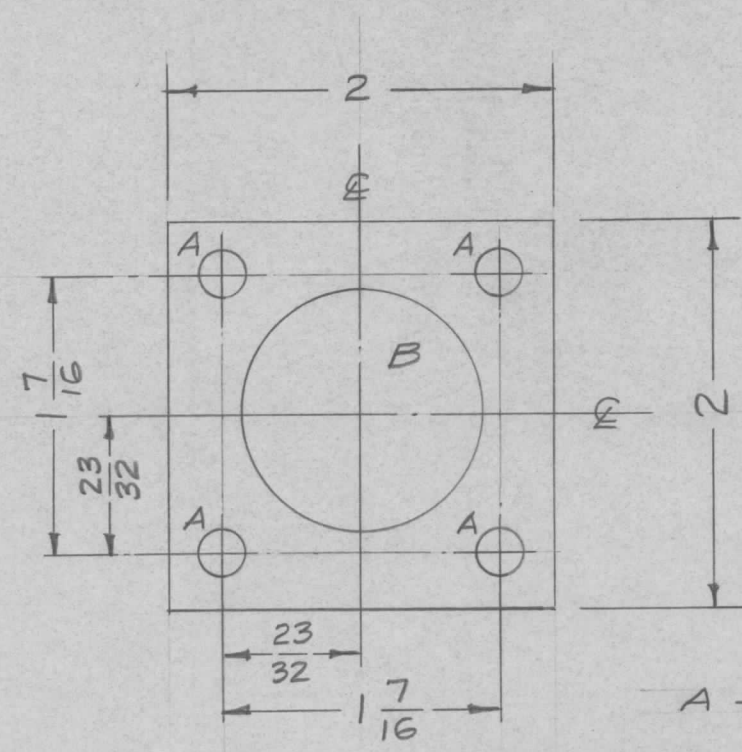


NOTE:
Perforation - .072 D.
Holes on 1/8" centers

ISSUE	ITEM	CHANGED FROM	DATE	CH. NO.	DRAFTS	CHECKER	ENG. APP.	REQ. ITEM	PART NO.	DESCRIPTION	SYMBOL		
									.051 Thk.	THE TECHNICAL MATERIEL CORP. MAMARONECK, NEW YORK COVER, BLANK			
									STOCK SIZE				
									Aluminum				
									MATERIAL				
								5052-H32		16 11/18/57			
TOLERANCES			SCALE: 1/4					TYPE & TEMPER. HEAT TREAT. SPEC.		DRAWN	CHECKED	FINAL APPROVAL	
DEC. DIM. ±			MAXIMUM ALLOWABLE TOLERANCES HAVE BEEN DETERMINED AND ANY DEVIATIONS WILL BE CAUSE FOR REJECTION. REMOVE ALL BURRS AND SHARP EDGES					FINISH & SPEC. NO.		ELEC. DES. APP.	MECH. DES. APP.	MS-1162	
FRAC. DIM. ± 1/64								5052					
ANGULAR DIM. ±													

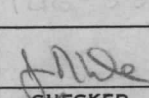
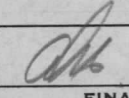
REQ. PER UNIT	USED ON		
	MODEL	ASS'Y. NO.	DATE
1	ATS-50TU		12-17-57
1	ATS-70TU		12-17-57

MS-1168 A



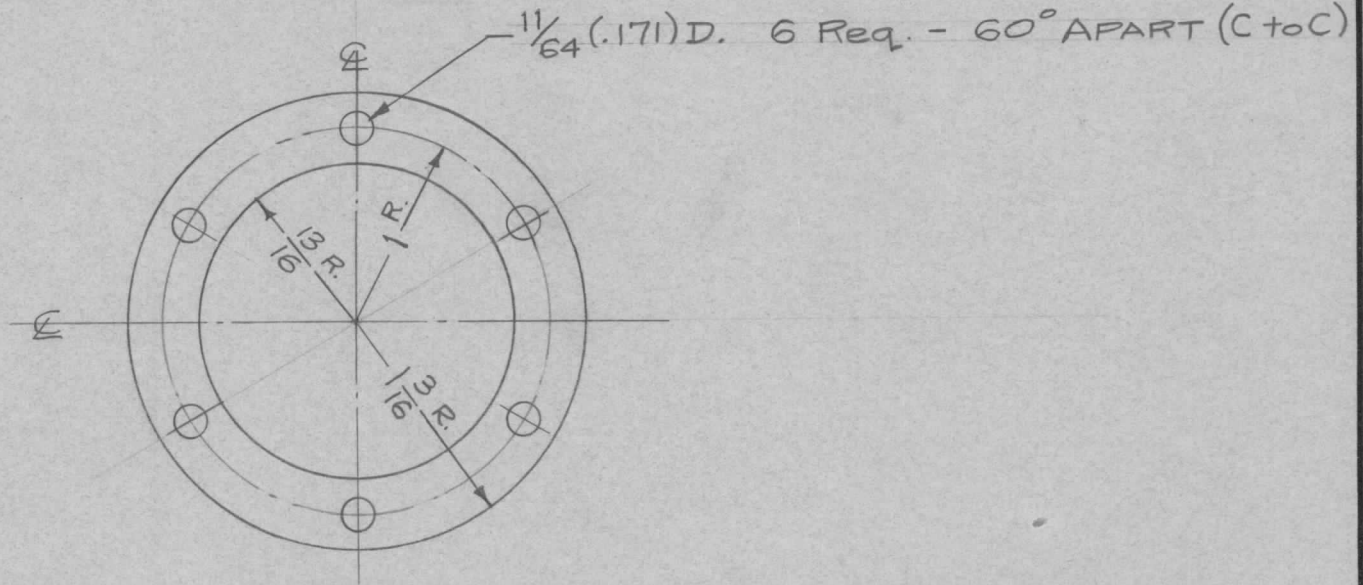
A - 15/64 (.234) D. 4 Req.
 B - 1 (1.000) D. 1 Req.

Ref - UG-352/U & GA-136

ISSUE	ITEM	CHANGED FROM	DATE	CH. NO.	DRAFTS	CHECKER	ENG. APP.	REQ. ITEM	PART NO.	DESCRIPTION	SYMBOL		
								.081 THK. STOCK SIZE		THE TECHNICAL MATERIEL CORP. MAMARONECK, NEW YORK			
								Aluminum		PLATE, ANTENNA CONNECTOR			
								MATERIAL					
A	1	5404 - IRIDITE WAS 5101 - CAUSTIC DIP	12-8 59	1001	P		EMN	5052-H32	— * —	16 12/17/57	 		
TOLERANCES			SCALE: FULL					TYPE & TEMPER		HEAT TREAT. SPEC.	DRAWN	CHECKED	FINAL APPROVAL
DEC. DIM. ±			MAXIMUM ALLOWABLE TOLERANCES HAVE BEEN DETERMINED AND ANY DEVIATIONS WILL BE CAUSE FOR REJECTION. REMOVE ALL BURRS AND SHARP EDGES					5404 IRIDITE					MS-1168 A
FRAC. DIM. ± 1/64								FINISH & SPEC. NO.		ELEC. DES. APP.	MECH. DES. APP.		
ANGULAR DIM. ±													

REQ. PER UNIT	USED ON		
	MODEL	ASS'Y. NO.	DATE
1	ATS-50TU		12-17-57
1	ATS-70TU		12-17-57

MS-1169 A



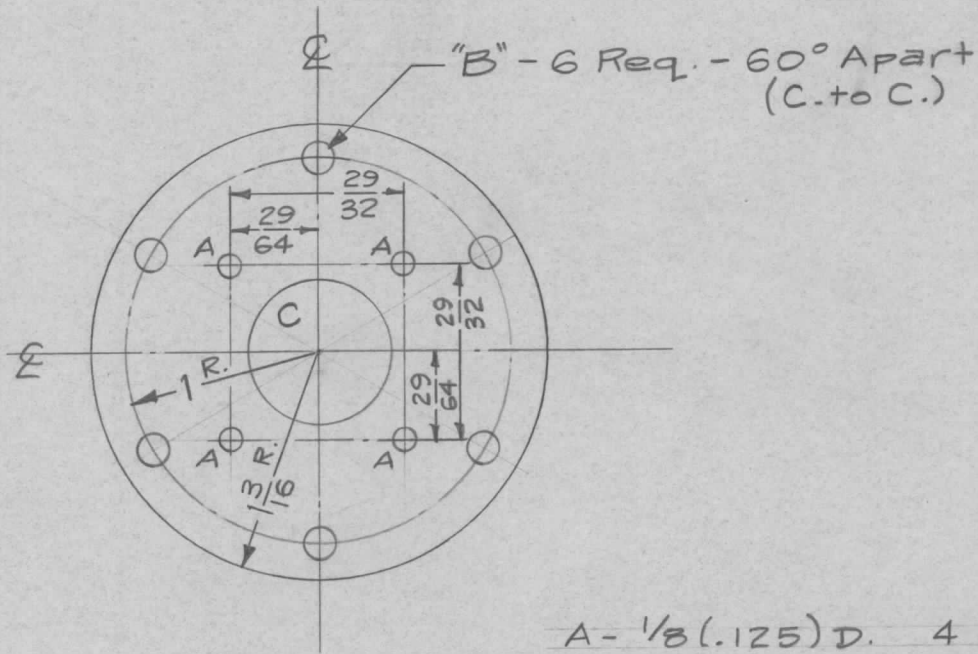
Finish
 S404 IRIDITE DIP
 S114 Zinc Chromate Primer
 S115 Smooth Grey Enamel

Ref-MS-1170

REQ.	ITEM	PART NO.	DESCRIPTION				SYMBOL
		.064 THK.	THE TECHNICAL MATERIEL CORP.				
		STOCK SIZE	MAMARONECK, NEW YORK				
		Aluminum	PLATE, RF CONNECTOR				
		MATERIAL					
A	1	S404-IRIDITE WAS S101 CAUSTIC DIP	12-8 59	1001	P	EMN	
ISSUE	ITEM	CHANGED FROM	DATE	CH. NO.	DRAFTS	CHECKER	ENG. APP.
TOLERANCES			SCALE: FULL				
DEC. DIM. ±			MAXIMUM ALLOWABLE TOLERANCES HAVE BEEN DETERMINED AND ANY DEVIATIONS WILL BE CAUSE FOR REJECTION.				
FRAC. DIM. ± 1/64			REMOVE ALL BURRS AND SHARP EDGES				
ANGULAR DIM. ± .5°							
		5052-H32			12/17/57	JME	Ch
		TYPE & TEMPER	HEAT TREAT. SPEC.	DRAWN		CHECKED	FINAL APPROVAL
		SEE NOTE		ELEC. DES. APP.		MECH. DES. APP.	MS-1169 A
		FINISH & SPEC. NO.					

REQ. PER UNIT	USED ON		
	MODEL	ASS'Y. NO.	DATE
1	ATS-50 TU	CA-364	12-17-57
1	ATS-70 TU	CA-364	12-17-57

MS-1170 A



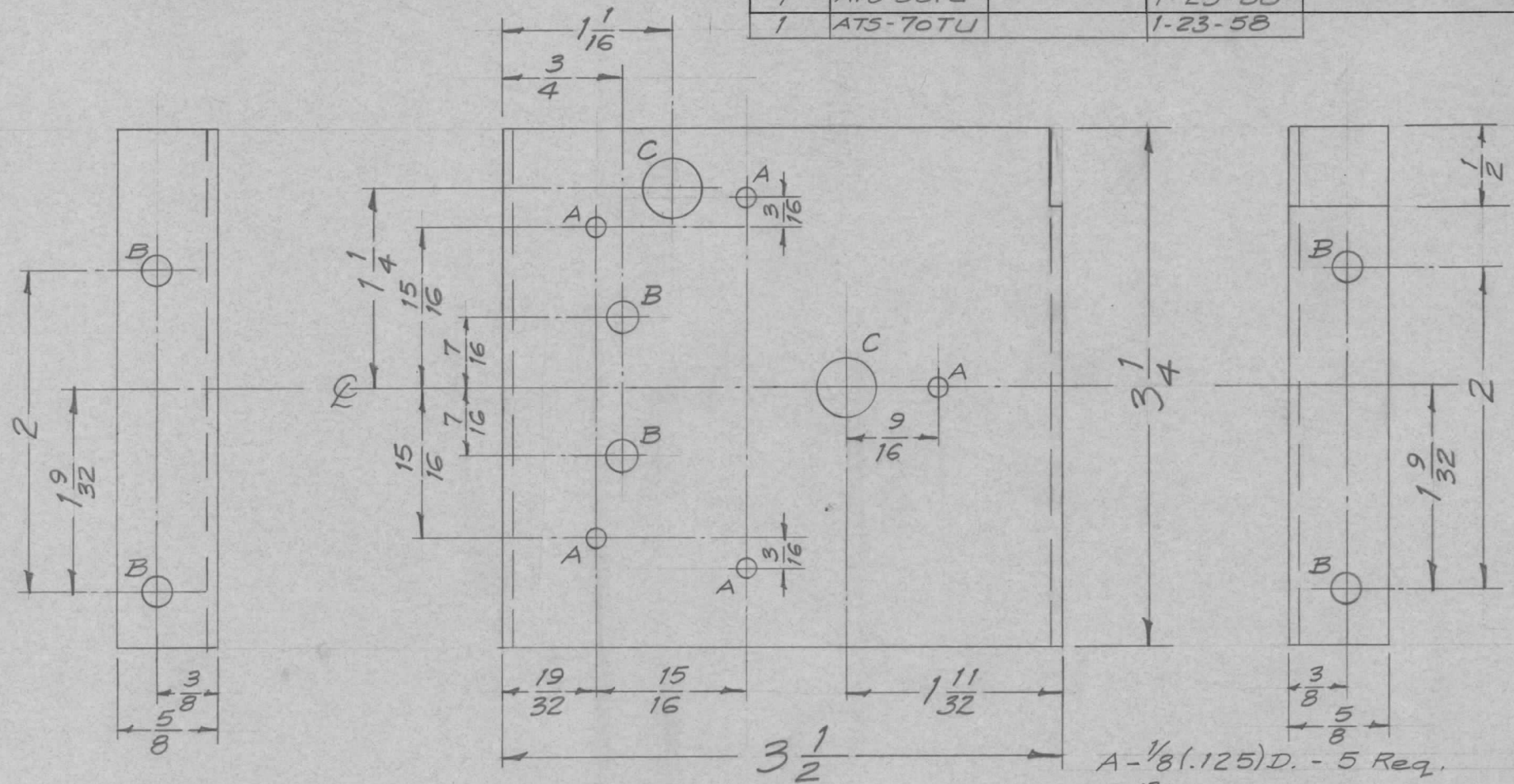
- A - 1/8 (.125) D. 4 Req.
- B - 1/64 (.171) D. 6 Req. - 60° Apart
- C - 3/4 (.750) D. 1 Req.

Ref-UG-61B/U & GA-141

ISSUE	ITEM	CHANGED FROM	DATE	CH. NO.	DRAFTS	CHECKER	ENG. APP.	REQ. ITEM	PART NO.	DESCRIPTION	SYMBOL						
										THE TECHNICAL MATERIEL CORP. MAMARONECK. NEW YORK							
									.064 THK. STOCK SIZE	PLATE, MOUNTING, RF CONNECTOR							
A	1	5404-IRIDITE WAS 5101-CAUSTIC DIP	12-8 59	1001	P		EMN	Aluminum									
TOLERANCES								MATERIAL		DRAWN		CHECKED		FINAL APPROVAL			
DEC. DIM. ±			SCALE: FULL					5052-H32		16 12/17/57		JAL		AMB			
FRAC. DIM. ± 1/64			MAXIMUM ALLOWABLE TOLERANCES HAVE BEEN DETERMINED AND ANY DEVIATIONS WILL BE CAUSE FOR REJECTION. REMOVE ALL BURRS AND SHARP EDGES					TYPE & TEMPER		HEAT TREAT. SPEC.		DRAWN		CHECKED		FINAL APPROVAL	
ANGULAR DIM. ± .5°								S404-IRIDITE									
								FINISH & SPEC. NO.		ELEC. DES. APP.		MECH. DES. APP.					

REQ. PER UNIT	USED ON		
	MODEL	ASSY. NO.	DATE
1	ATS-50TU		1-23-58
1	ATS-70TU		1-23-58

MS-1171 A

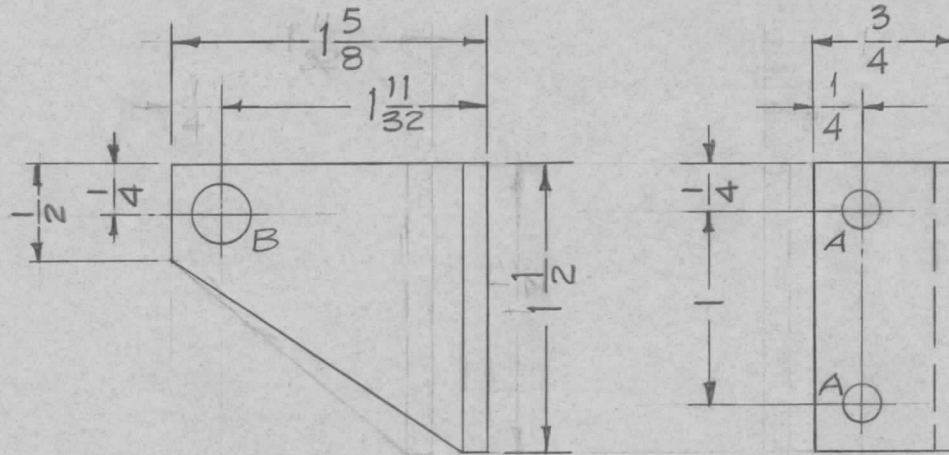


A - $\frac{1}{8}$ (.125) D. - 5 Req.
 B - $\frac{13}{64}$ (.203) D. - 6 Req.
 C - $\frac{3}{8}$ (.375) D. - 2 Req.
 REF - LD-401

ISSUE	ITEM	CHANGED FROM	DATE	CH. NO.	DRAFTS	CHECKER	ENG. APP.	REQ. ITEM	PART NO.	DESCRIPTION	SYMBOL		
									.064 THK.	THE TECHNICAL MATERIEL CORP. MAMARONECK, NEW YORK	BRACKET, POTENTIOMETER		
									STOCK SIZE				
A	1	S404 - IRIDITE WAS S101 - CAUSTIC DIP	12-8 59	1001	P		EMN		Aluminum				
TOLERANCES								SCALE: FULL					
DEC. DIM. \pm FRAC. DIM. $\pm \frac{1}{64}$ ANGULAR DIM. \pm								MAXIMUM ALLOWABLE TOLERANCES HAVE BEEN DETERMINED AND ANY DEVIATIONS WILL BE CAUSE FOR REJECTION. REMOVE ALL BURRS AND SHARP EDGES					
								5052-H32	N	161-23-58	FILE	OK	
								S404 IRIDITE			DR	MS-1171	A
								FINISH & SPEC. NO.		ELEC. DES. APP.	MECH. DES. APP.		

REQ. PER UNIT	USED ON		
	MODEL	ASS'Y. NO.	DATE
1	ATS-50TU		12-17-57
1	ATS-70TU		12-17-57

MS-1173 B

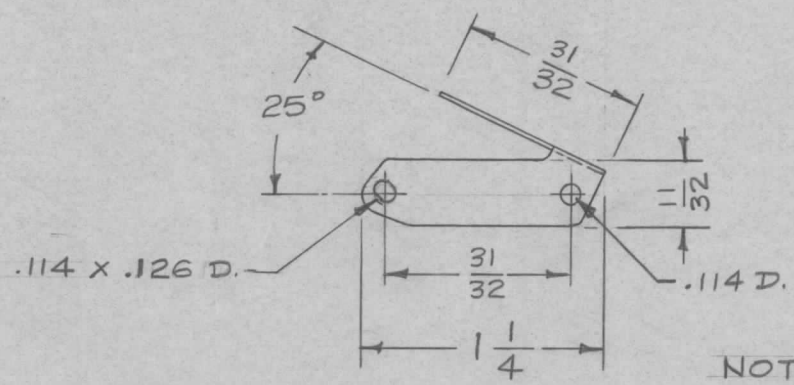
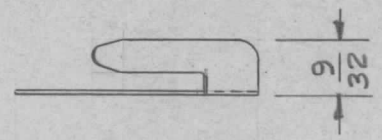


A - 13/64 (.203) D. - 2 Req.

B - 5/16 (.312) D. - 1 Req. (for BB-117-6)

ISSUE	ITEM	CHANGED FROM	DATE	CH. NO.	DRAFTS	CHECKER	ENG. APP.	REQ. ITEM	PART NO.	DESCRIPTION	SYMBOL														
								1 x 12 ₂ x 1/8 Thk.	THE TECHNICAL MATERIEL CORP. MAMARONECK, NEW YORK																
B	2	On lip, 1/4" Dim was 1/2"	10/24/60	3251	J.C.B.	Jde	Jde	STOCK SIZE	SUPPORT, POTENTIOMETER SHAFT																
	1	On lip, 3/4" Dim. was 1"						Aluminum																	
A	1	S404 - IRIDITE WAS S101 - CAUSTIC DIP	12-8 59	1001	P		EMN	MATERIAL																	
TOLERANCES								6063-T5	A	12-17-57	Jde	ah													
SCALE: FULL								TYPE & TEMPER		HEAT TREAT. SPEC.		DRAWN		CHECKED		FINAL APPROVAL									
DEC. DIM. ± FRAC. DIM. ± 1/64 ANGULAR DIM. ±								MAXIMUM ALLOWABLE TOLERANCES HAVE BEEN DETERMINED AND ANY DEVIATIONS WILL BE CAUSE FOR REJECTION. REMOVE ALL BURRS AND SHARP EDGES								S404-IRIDITE		Jde		BAP		MS-1173		B	
								FINISH & SPEC. NO.		ELEC. DES. APP.		MECH. DES. APP.													

REQ. PER UNIT	USED ON			MS-1174 A
	MODEL	ASS'Y. NO.	DATE	
2	ATS		12-18-57	



NOTE - All Dimensions for Reference Only.

Mfg. Hardware (Screw)

UNLESS OTHERWISE SPECIFIED DIMENSIONS ARE IN INCHES AND INCLUDE CHEMICALLY APPLIED OR PLATED FINISHES		
DECIMALS	TOLERANCES	FRACTIONS
.X ± .05		± 1/64
.XX ± .01		ANGLES ± 0° 30'
.XXX ± .005		

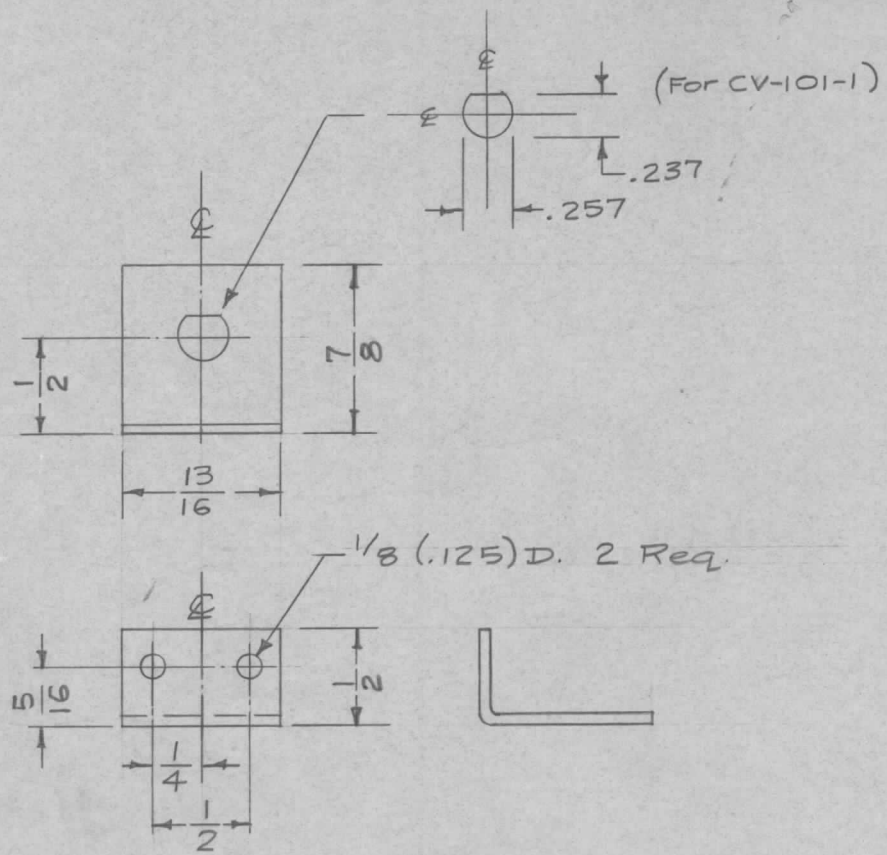
CUT HERE
GUARANTEED
2-66

REF: MICRO - CAT. # JV-43 (USE WITH SW-189)

REQ.	ITEM	PART NO.	DESCRIPTION				SYMBOL
		.012 THK. (27 GA)	THE TECHNICAL MATERIEL CORP. MAMARONECK, NEW YORK				
		CORROSION RESISTANT STEEL	ADAPTOR, SWITCH ACTUATOR				
		MATERIAL					
A	DELE. MFG. HWARE NOTE JV43 WAS JV-1, 012 THK WAS .014	12-18-64	13104	WLD	JSR	JSR	
ISSUE	ITEM	CHANGED FROM	DATE	CH. NO.	DRAFTS	CHECKER	ENG. APP.
TOLERANCES			SCALE: FULL				
DEC. DIM. ± FRAC. DIM. ± ANGULAR DIM. ±			MAXIMUM ALLOWABLE TOLERANCES HAVE BEEN DETERMINED AND ANY DEVIATIONS WILL BE CAUSE FOR REJECTION. REMOVE ALL BURRS AND SHARP EDGES				
TYPE & TEMPER		HEAT TREAT. SPEC.	DRAWN	CHECKED	FINAL APPROVAL		
FINISH & SPEC. NO.		ELEC. DES. APP.	MECH. DES. APP.	MS-1174 A			

REQ. PER UNIT	USED ON		
	MODEL	ASS'Y. NO.	DATE
2	ATS-70CU		12-19-57
2	ATS-70/CU-2		12-19-57

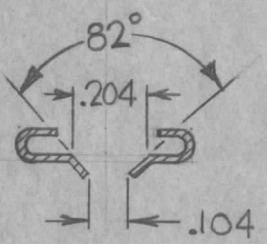
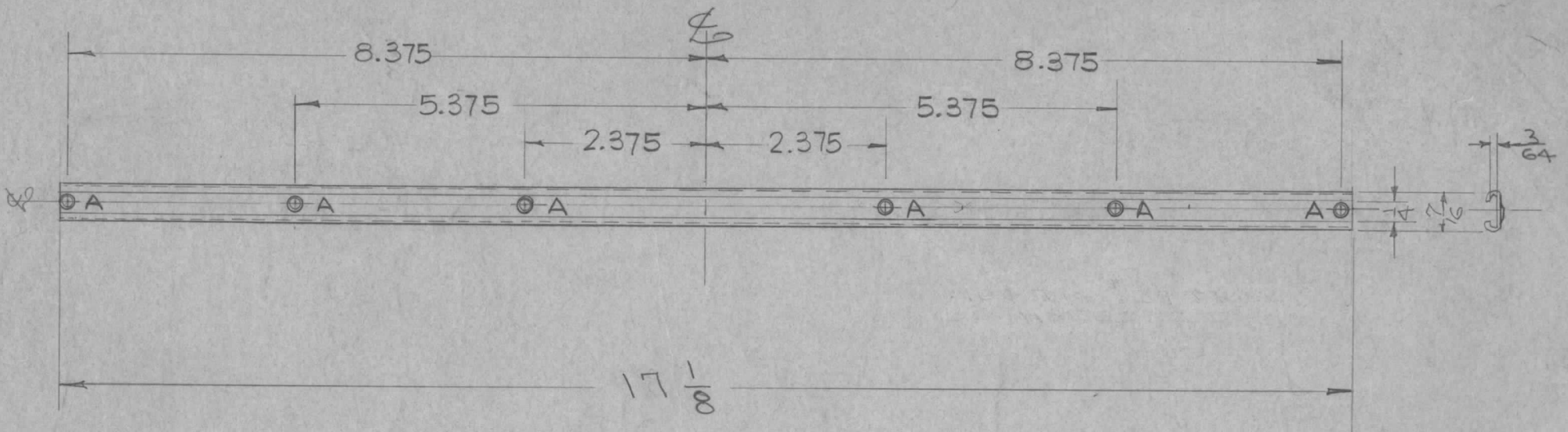
MS-1176 A



ISSUE	ITEM	CHANGED FROM	DATE	CH. NO.	DRAFTS	CHECKER	ENG. APP.	REQ. ITEM	PART NO.	DESCRIPTION	SYMBOL		
									.051 THK.	THE TECHNICAL MATERIEL CORP. MAMARONECK, NEW YORK	BRACKET, CAPACITOR MTG.		
									STOCK SIZE				
									Aluminum				
									MATERIAL				
A	1	S404-IRIDITE WAS S101-CAUSTIC DIP	12-8 59	1001	P		EMN	5052-H32	— H —	12-19-57	JND	MS-1176 A	
TOLERANCES			SCALE: FULL					TYPE & TEMPER		HEAT TREAT. SPEC.	DRAWN	CHECKED	FINAL APPROVAL
DEC. DIM. ±			MAXIMUM ALLOWABLE TOLERANCES HAVE BEEN DETERMINED AND ANY DEVIATIONS WILL BE CAUSE FOR REJECTION. REMOVE ALL BURRS AND SHARP EDGES					S404-IRIDITE					
FRAC. DIM. ± 1/CA								FINISH & SPEC. NO.		ELEC. DES. APP.	MECH. DES. APP.		
ANGULAR DIM. ±													

REQ. PER UNIT	USED ON		
	MODEL	ASS'Y. NO.	DATE
2	SPP-3		12-20-57
1	QDP-411		5-20-58
1	BJP-1		10-2-58

MS-1184 A



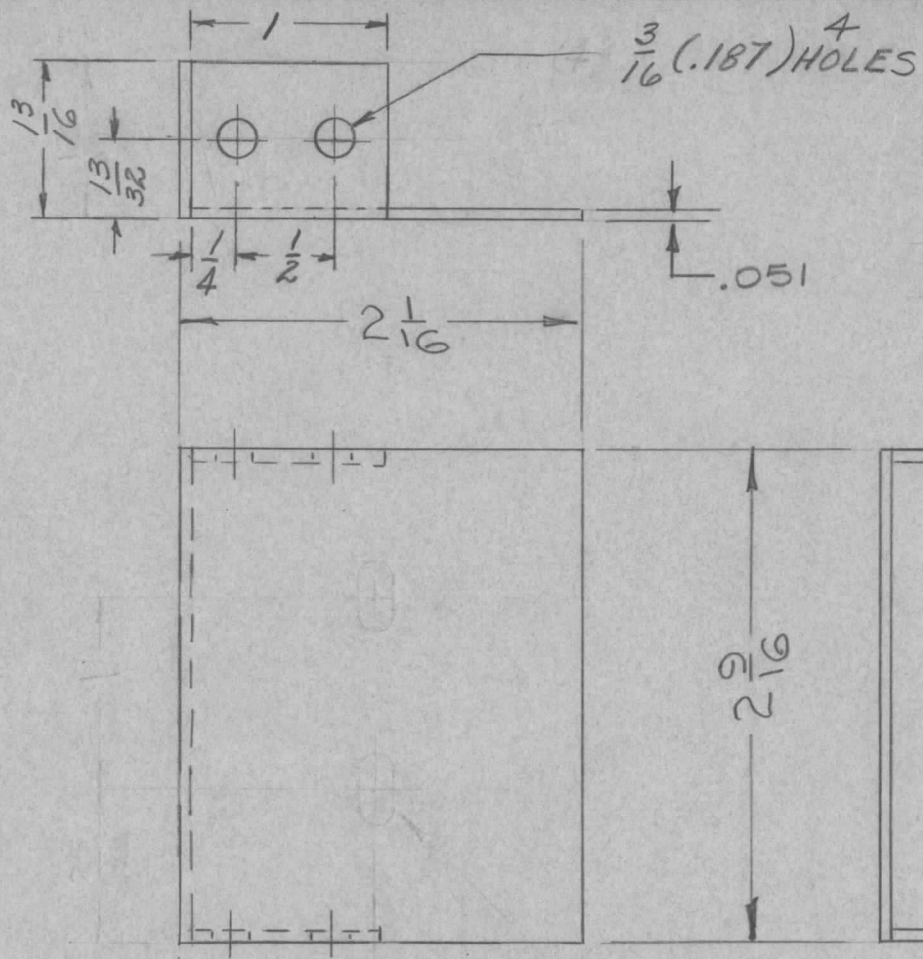
DETAIL "A"
G REQ'D.

NOTE

FINISH:
 DEGREASE
 S-114 ZINC CHROMATE PRIMER
 S-115-SMOOTH GRAY ENAMEL
MATING COMPONENTS
 PR 101-17
 PX 396-17

REQ. ITEM	PART NO.	DESCRIPTION	SYMBOL				
	.012	THE TECHNICAL MATERIEL CORP. MAMARONECK, NEW YORK	HOLDER, CARD				
	STEEL						
	MILD						
A	ADD "A" HOLES (G) DIM. WERE FRACT.; ADD MATING COMP.	2-23-66	15838	HLA	QC		
ISSUE ITEM	CHANGED FROM	DATE	CH. NO.	DRAFTS	CHECKER	ENG. APP.	
TOLERANCES		SCALE: //					
DEC. DIM. ± .005		MAXIMUM ALLOWABLE TOLERANCES HAVE BEEN DETERMINED AND ANY DEVIATIONS WILL BE CAUSE FOR REJECTION. REMOVE ALL BURRS AND SHARP EDGES					
FRAC. DIM. ± 1/64							
ANGULAR DIM. ±							
TYPE & TEMPER		HEAT TREAT. SPEC.		DRAWN		CHECKED	
FINISH & SPEC. NO.		ELEC. DES. APP.		MECH. DES. APP.		MS-1184 A	

REQ. PER UNIT	USED ON			MS-1185	B
	MODEL	ASS'Y. NO.	DATE		
1	GPT CAB.		1-15-58		

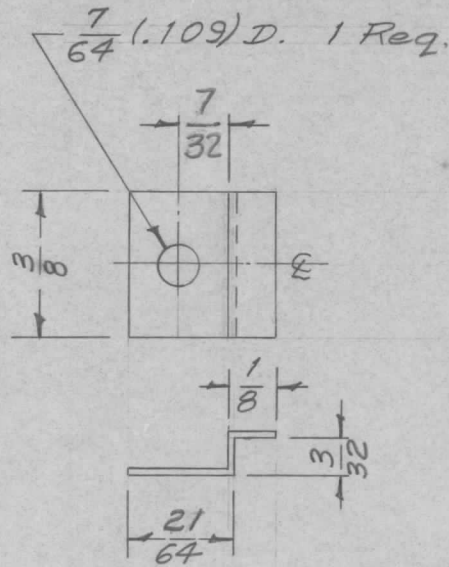


NOTE - This bracket used only when Mounting Flue on GPT-750

REQ.	ITEM	PART NO.	DESCRIPTION				SYMBOL
		.051	THE TECHNICAL MATERIEL CORP.				
		STOCK SIZE	MAMARONECK, NEW YORK				
B	1	5404-IRIDITE WAS S101-CAUSTIC DIP	12-8	1001	P	EMN	BRACKET, AIR BLOCKING
A	1	DELETED (2) SLOTS; ADDED FLANGES & HOLES	5/14/58	1	EMN	EMN	
ISSUE	ITEM	CHANGED FROM	DATE	CH. NO.	DRAFTS	CHECKER	ENG. APP.
TOLERANCES			SCALE: $\frac{1}{4}$				
DEC. DIM. \pm			MAXIMUM ALLOWABLE TOLERANCES HAVE BEEN DETERMINED AND ANY DEVIATIONS WILL BE CAUSE FOR REJECTION. REMOVE ALL BURRS AND SHARP EDGES				
FRAC. DIM. \pm $\frac{1}{64}$							
ANGULAR DIM. \pm							
5052-H32		TYPE & TEMPER		HEAT TREAT. SPEC.		DRAWN	
S404-IRIDITE		FINISH & SPEC. NO.		ELEC. DES. APP.		MECH. DES. APP.	
		DATE 1/9/58		CHECKED		FINAL APPROVAL	
		MS-1185		B			

REQ. PER UNIT	USED ON		
	MODEL	ASS'Y. NO.	DATE
4	ATS-MCU		2-10-57
4	SWR-3000		5-21-58
4	ATS-MCU-2		7-8-59

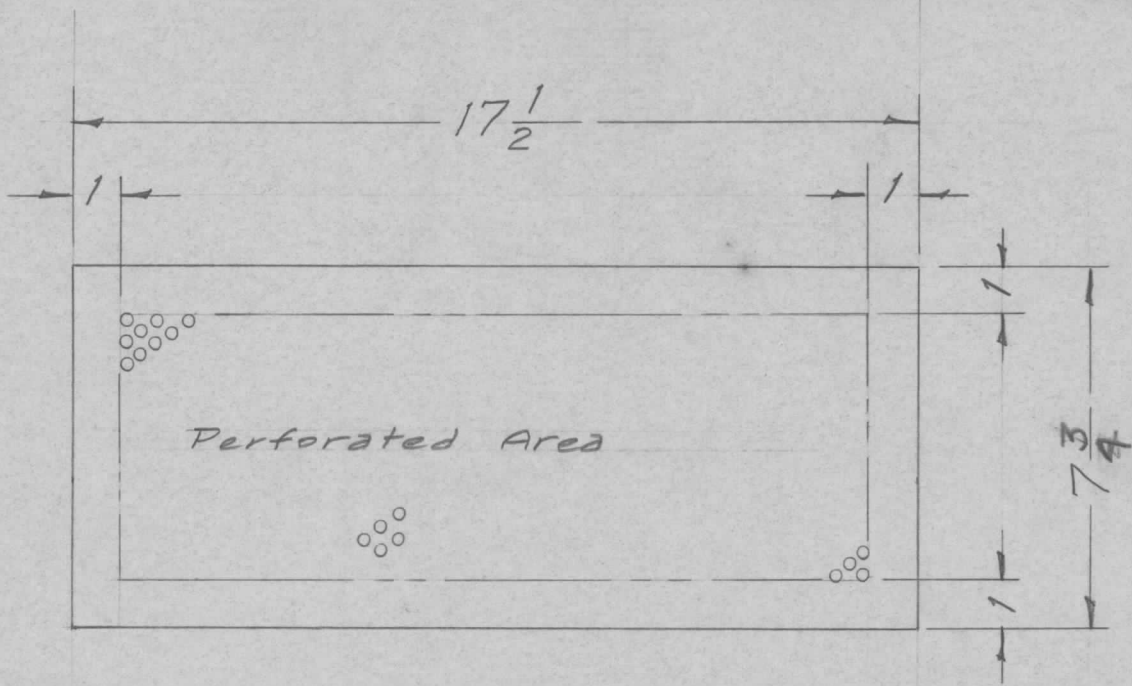
MS-1194 B



REQ.	ITEM	PART NO.	DESCRIPTION	SYMBOL										
		.020 THK.	THE TECHNICAL MATERIEL CORP. MAMARONECK, NEW YORK	CLAMP, WINDOW										
		STOCK SIZE												
B		7/32 DIM'S WAS 3/16												
A	1	3/16 WAS 1/8 21/64 WAS 17/64												
ISSUE	ITEM	CHANGED FROM	DATE	CH. NO.	DRAFTS	CHECKER	ENG. APP.	MATERIAL						
TOLERANCES			SCALE: 2X		N		N		16	2/10/57	JME	AKK		
DEC. DIM. \pm			MAXIMUM ALLOWABLE TOLERANCES HAVE BEEN DETERMINED AND ANY DEVIATIONS WILL BE CAUSE FOR REJECTION.		TYPE & TEMPER		HEAT TREAT. SPEC.		DRAWN		CHECKED		FINAL APPROVAL	
FRAC. DIM. \pm 1/64			REMOVE ALL BURRS AND SHARP EDGES		N						RFB		MS-1194 B	
ANGULAR DIM. \pm					FINISH & SPEC. NO.		ELEC. DES. APP.		MECH. DES. APP.					

REQ. PER UNIT	USED ON		
	MODEL	ASS'Y. NO.	DATE
1	ATS-MCU		2-10-58
1	SWR-3000RM		
1	ATS-MCU-2		6-8-59

MS-1195



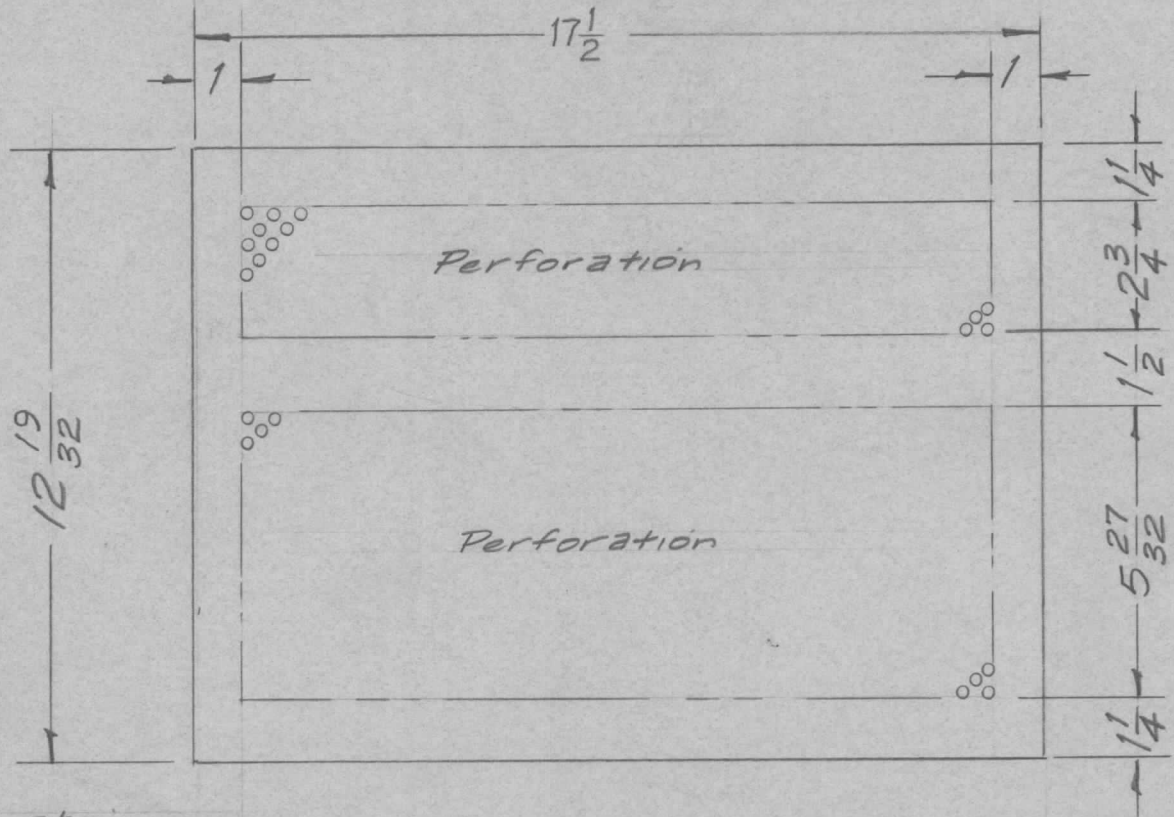
Perforation:
 .072 Diam. Holes on 1/8 Centers.

Ref - MS-1193(4) Cover, Bottom

REQ.	ITEM	PART NO.	DESCRIPTION			SYMBOL	
		.051 THK.	THE TECHNICAL MATERIEL CORP.				
		STOCK SIZE	MAMARONECK, NEW YORK				
		ALUMINUM	BLANK SIZE, BOTTOM				
		MATERIAL	COVER				
ISSUE	ITEM	CHANGED FROM	DATE	CH. NO.	DRAFTS	CHECKER	ENG. APP.
TOLERANCES			SCALE: 1/4				
DEC. DIM. ±			MAXIMUM ALLOWABLE TOLERANCES HAVE BEEN DETERMINED AND ANY DEVIATIONS WILL BE CAUSE FOR REJECTION. REMOVE ALL BURRS AND SHARP EDGES				
FRAC. DIM. ± 1/64							
ANGULAR DIM. ±							
TYPE & TEMPER		HEAT TREAT. SPEC.	DRAWN	CHECKED	FINAL APPROVAL		
FINISH & SPEC. NO.		ELEC. DES. APP.	MECH. DES. APP.	MS-1195			

REQ. PER UNIT	USED ON		
	MODEL	ASS'Y. NO.	DATE
1	ATS-MCU		2-10-58
1	SWR-3000 R.H.		6-3-58
1	ATS-MCU-2		6-8-59

MS-1196 A



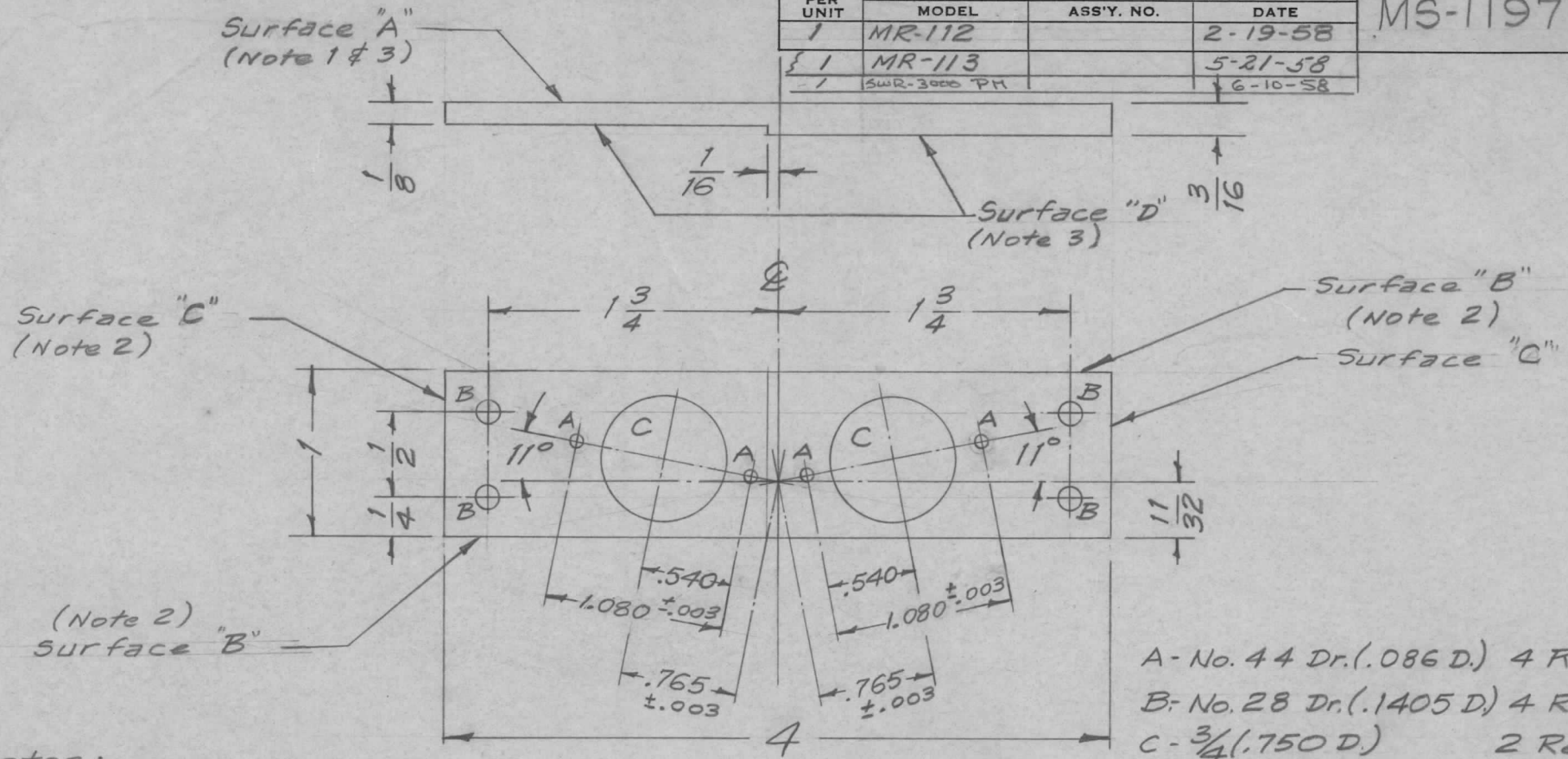
Perforation -
.072 Diam. Holes on 1/8 Centers.

Ref- MS-1192(B) Top Cover

REQ.	ITEM	PART NO.	DESCRIPTION				SYMBOL
		.051 THK.	THE TECHNICAL MATERIEL CORP.				
		STOCK SIZE	MAMARONECK, NEW YORK				
		Aluminium	BLANK SIZE, TOP COVER				
		MATERIAL					
A	1	17 1/2 added	9-15-59	1296	DM	<i>[Signature]</i>	
ISSUE	ITEM	CHANGED FROM	DATE	CH. NO.	DRAFTS	CHECKER	ENG. APP.
TOLERANCES			SCALE: 1/4				
DEC. DIM. ±			MAXIMUM ALLOWABLE TOLERANCES HAVE BEEN DETERMINED AND ANY DEVIATIONS WILL BE CAUSE FOR REJECTION.				
FRAC. DIM. ± 1/64			REMOVE ALL BURRS AND SHARP EDGES				
ANGULAR DIM. ±							
		5052H32	N		16 2/10/58	<i>[Signature]</i>	<i>[Signature]</i>
TYPE & TEMPER		HEAT TREAT. SPEC.	DRAWN		CHECKED	FINAL APPROVAL	
		N			RFB	MS-1196 A	
FINISH & SPEC. NO.		ELEC. DES. APP.		MECH. DES. APP.			

REQ. PER UNIT	USED ON		
	MODEL	ASS'Y. NO.	DATE
1	MR-112		2-19-58
1	MR-113		5-21-58
1	SWR-3000 PH		6-10-58

MS-1197 B



- A - No. 44 Dr. (.086 D.) 4 Req.
- B - No. 28 Dr. (.1405 D.) 4 Req.
- C - $3/4$ (.750 D.) 2 Req.

Notes:

1. Surface "A" Must be flat within .002
2. Surfaces "B" & "C" must be Milled.
Surface "B" must be parallel & square with Surface "C".
3. Surface "A" must be parallel with Surface "D".

REQ.	ITEM	PART NO.	DESCRIPTION	SYMBOL					
		1 x 3/16 THK.	THE TECHNICAL MATERIEL CORP. MAMARONECK, NEW YORK PLATE, MTG., METER MOVEMENT						
		STOCK SIZE							
		Aluminum							
		MATERIAL							
ISSUE	ITEM	CHANGED FROM	DATE	CH. NO.	DRAFTS	CHECKER	ENG. APP.		
TOLERANCES (UNLESS OTHERWISE SPECIFIED)		SCALE: FULL							
DEC. DIM. $\pm .005$		MAXIMUM ALLOWABLE TOLERANCES HAVE BEEN DETERMINED AND ANY DEVIATIONS WILL BE CAUSE FOR REJECTION. REMOVE ALL BURRS AND SHARP EDGES							
FRAC. DIM. $\pm 1/64$									
ANGULAR DIM. $\pm 1^\circ$									
		2024-T3	N	16 3/19/58					
		TYPE & TEMPER	HEAT TREAT. SPEC.	DRAWN	CHECKED	FINAL APPROVAL			
		5404-IRIDITE				MS-1197 B			
		FINISH & SPEC. NO.	ELEC. DES. APP.	MECH. DES. APP.					