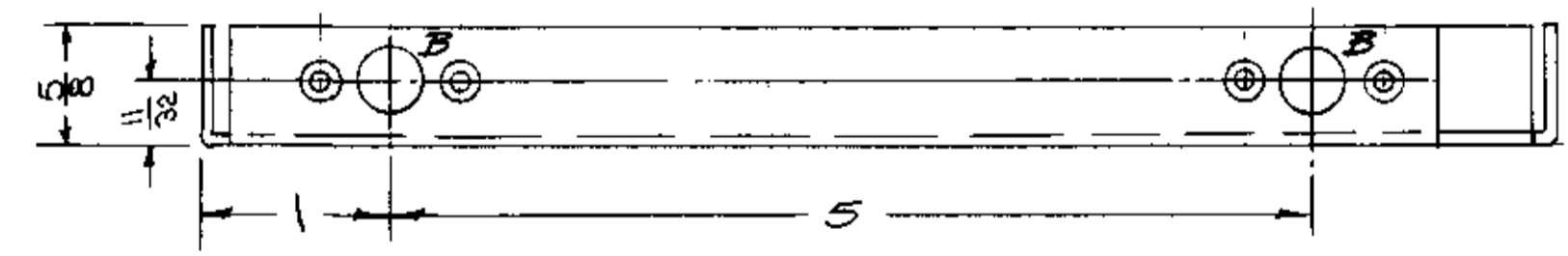
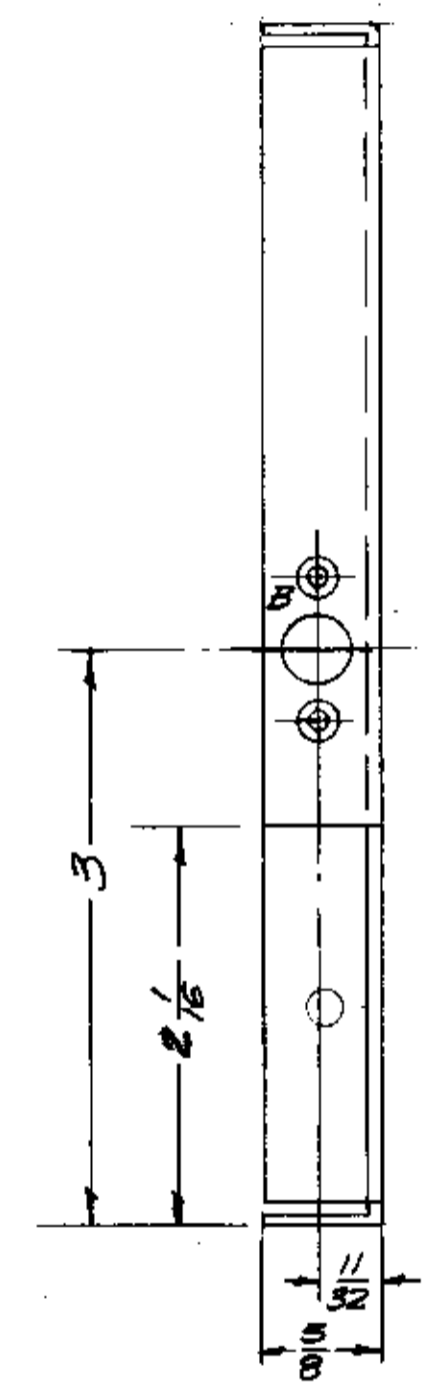
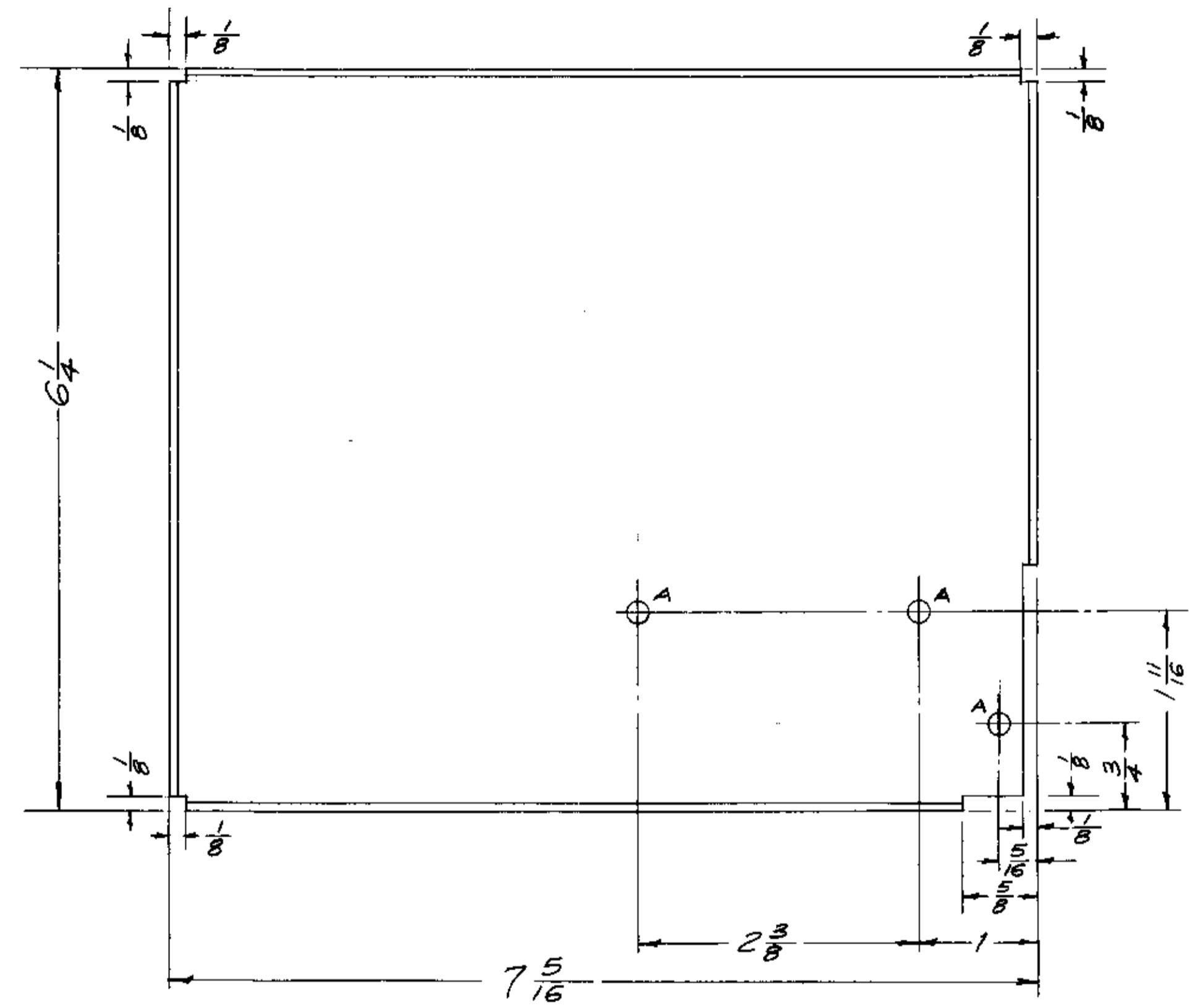
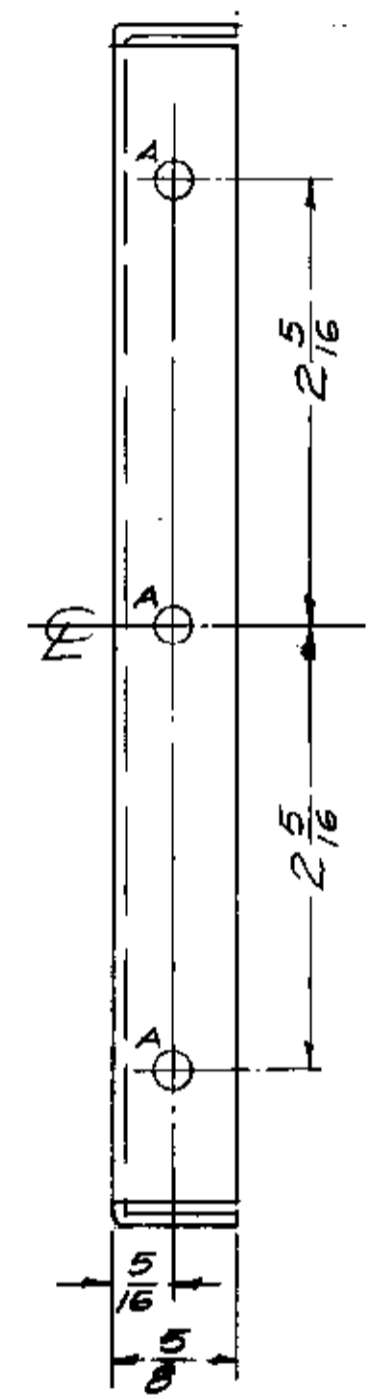
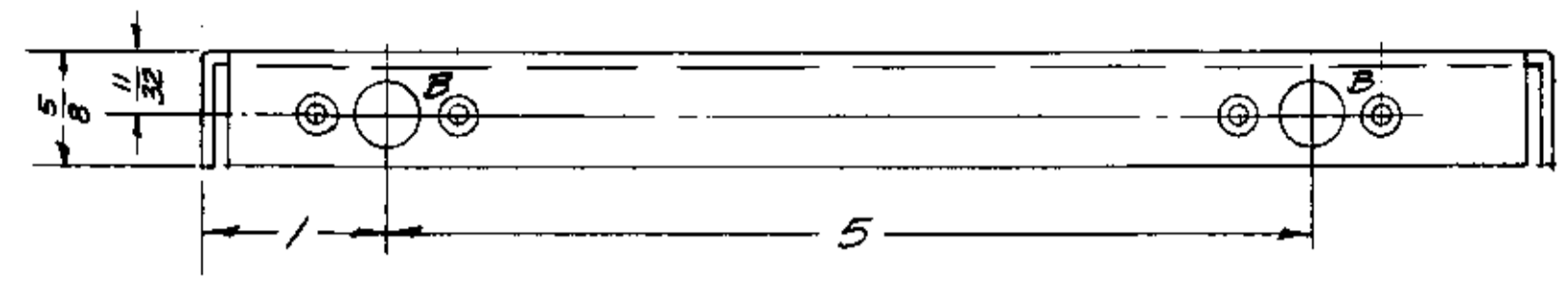
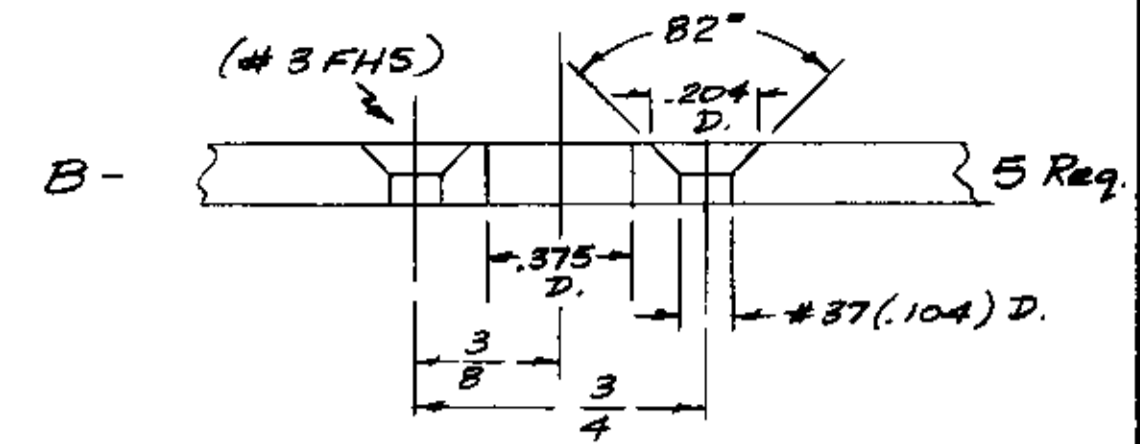


IF IT IS FOUND DESIRABLE TO CHANGE ANY TOLERANCE OR OTHER DETAIL SPECIFIED ON THIS DRAWING NOTIFY THE PURCHASER PROMPTLY.

MAXIMUM ALLOWABLE TOLERANCES HAVE BEEN DETERMINED AND DEVIATIONS WILL BE CAUSE FOR REJECTION. REMOVE ALL BURRS AND SHARP EDGES

A - 13/64 (.203) D. 6 Req.



MS-1189 B

NOTICE TO PERSONS RECEIVING THIS DRAWING

THE TECHNICAL MATERIEL CORPORATION claims proprietary right in the material disclosed hereon. This drawing is issued in confidence for engineering information only and may not be reproduced or used to manufacture anything shown hereon without permission from THE TECHNICAL MATERIEL CORPORATION to the user. This drawing is loaned for mutual assistance and is subject to recall at any time.

Property of:
THE TECHNICAL MATERIEL CORPORATION
M. MAMARONECK, NEW YORK

ISSUE	ITEM	CHANGED FROM	DATE	GN. NO.	DRAFTER	CHECKER	ENG. APP.
B	1	CLERICAL CHANGE	1-4-65	-	FB	EMN	
A	1	8404 - TEL - 121878	12-9-58	1001	P		EMN
		3181 - CAUSTIC DIP					

TOLERANCES: SCALE: FULL

ALL OTHERS: DEC. DIM. ± 1/64, FRAC. DIM. ± 1/64, ANGULAR DIM. ±

DRILL, PUNCH, COMMERCIAL STOCK SIZES AND MANUFACTURERS TOLERANCES ARE NOT INCLUDED.

REQ. PER UNIT	MODEL	PROJECT NO.	ASSY. NO.	DATE
1	SWR-10K-RM			12-10-64
1	ATS-MDU-2			6-8-59
1	SWR-3000-RM			5-19-58
1	ATS-MCL-1			2-4-58

USED ON

REQ. ITEM	PART NO.	DESCRIPTION	SYMBOL
	.064 Thk.	THE TECHNICAL MATERIEL CORP. MAMARONECK, NEW YORK	
	STOCK SIZE		
	Aluminum	PLATE, SIDE, LEFT	
	MATERIAL		
	WEIGHT PER PC.		
	5052-H32		
	TYPE & TEMPER		
	HEAT TREAT. SPEC.		
	5404 TEL-121878		
	FINISH & SPEC. NO.		

16 3/4 58

DRAWN: [Signature] CHECKED: [Signature] FINAL APPROVAL: [Signature]

MS-1189 B