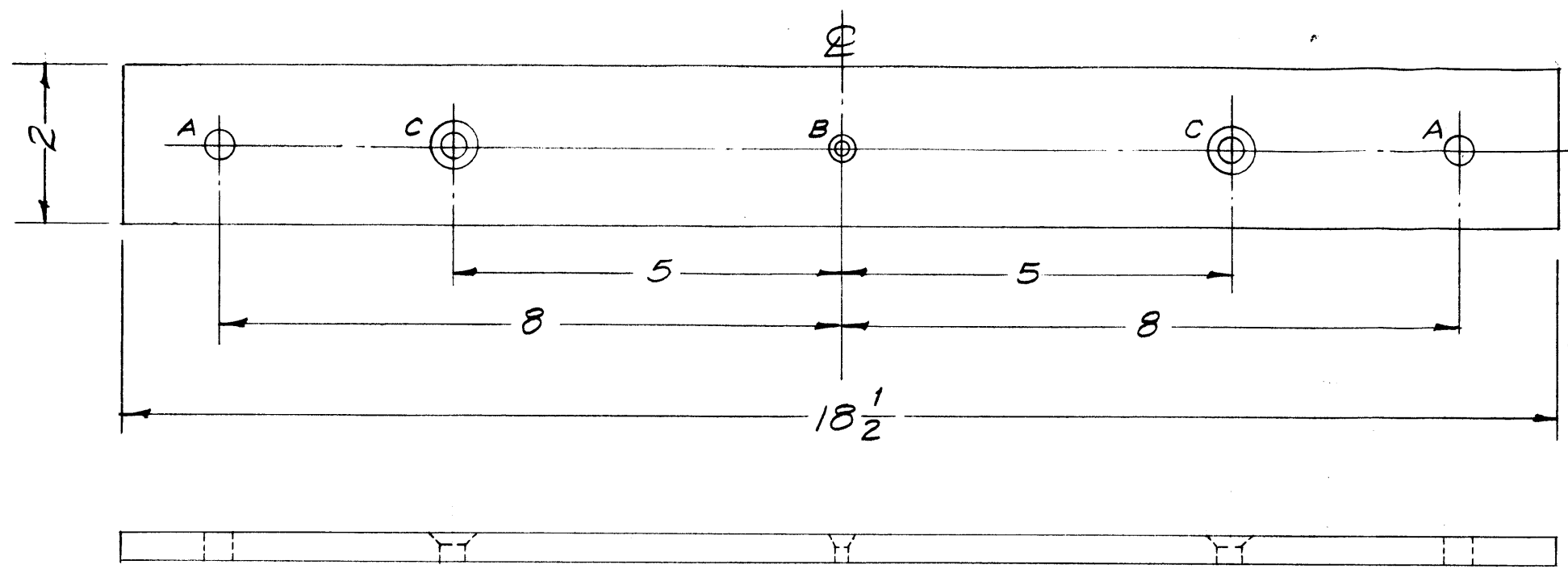


MS-1186 A

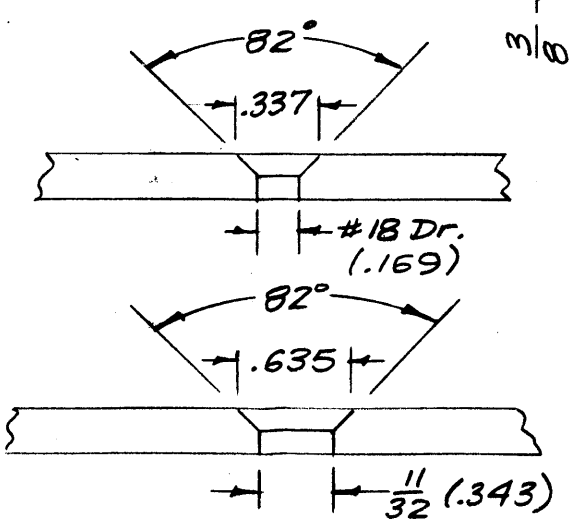


NOTICE TO PERSONS RECEIVING THIS DRAWING  
 THE TECHNICAL MATERIEL CORPORATION claims proprietary right in the material disclosed hereon. This drawing is issued in confidence for engineering information only and may not be reproduced or used to manufacture anything shown hereon without permission from THE TECHNICAL MATERIEL CORPORATION to the user. This drawing is loaned for mutual assistance and is subject to recall at any time.  
 Property of:  
 THE TECHNICAL MATERIEL CORPORATION  
 MAMARONECK, NEW YORK

A -  $\frac{25}{64}$  (.390) D. 2 Req.

B - Drill & C'sink for 8-32 FHS 1 Req.

C - Drill & C'sink for  $\frac{5}{16}$ -18 FHS 2 Req.



FINISH NOTE -  
 S-404 YELLOW IRIDITE  
 5114 Zinc Chromate Primer  
 5115 Smooth Grey Enamel

ISSUE	ITEM	CHANGED FROM	DATE	CH. NO.	DRAFTS	CHECKER	ENG. APP.
A	1	S-404 WAS S-101	12/14/59	1001	AB		EMN

TOLERANCES  
 DEC. DIM.  $\pm$   
 FRAC. DIM.  $\pm$  1/64  
 ANGULAR DIM.  $\pm$

SCALE: 1/2  
 MAXIMUM ALLOWABLE TOLERANCES HAVE BEEN DETERMINED AND ANY DEVIATIONS WILL BE CAUSE FOR REJECTION.  
 REMOVE ALL BURRS AND SHARP EDGES

REQ. PER UNIT	MODEL	PROJECT NO.	ASS'Y. NO.	DATE
2	ATS-70TU			1-22-58
2	ATS-50TU			1-22-58

USED ON

REQ. ITEM	PART NO.	DESCRIPTION	SYMBOL
	3/8 THK.	THE TECHNICAL MATERIEL CORP. MAMARONECK, NEW YORK	
	STOCK SIZE		
	ALUMINUM	PLATE, MOUNTING, OUTSIDE	
	MATERIAL		
	6063-T5	16 1/22/58	
	TYPE & TEMPER	HEAT TREAT. SPEC.	DRAWN
	See Note		CHECKED
			FINAL APPROVAL
			MS-1186 A