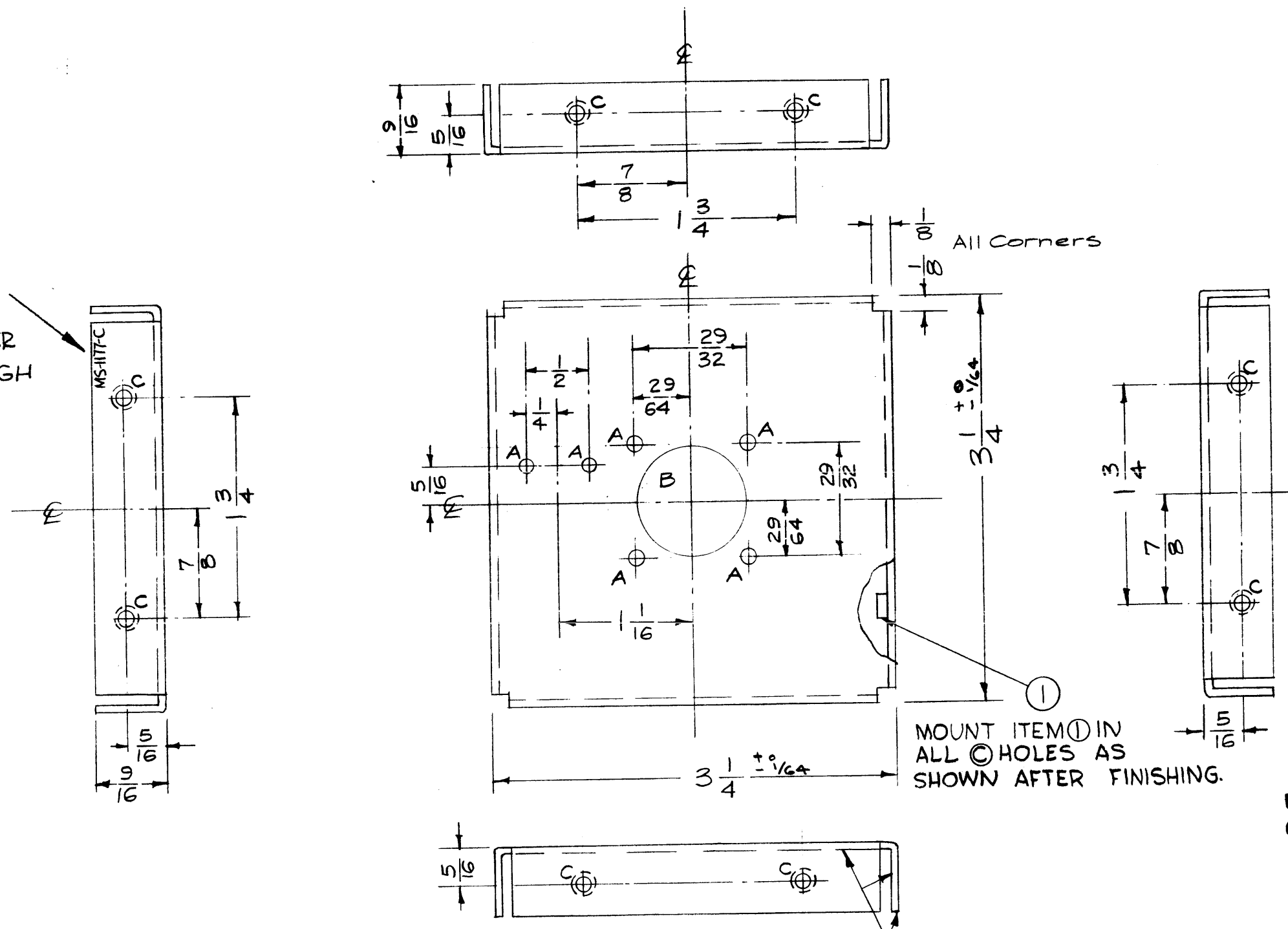


MS-1177 C

LEGEND		
HOLE	DESCRIPTION	REQ.
A	1/8 DIA.	6
B	7/8 DIA.	1
C	.161-.164 DIA.	8

METAL STAMP
TMC PART NO
AS SHOWN AFTER
FINISH 1/8 HIGH
GOTHIC



NOTICE TO PERSONS RECEIVING THIS DRAWING

THE TECHNICAL MATERIEL CORPORATION claims proprietary right in the material disclosed hereon. This drawing is issued in confidence for engineering information only and may not be reproduced or used to manufacture anything shown hereon without permission from THE TECHNICAL MATERIEL CORPORATION to the user. This drawing is loaned for mutual assistance and is subject to recall at any time.

Property of:
THE TECHNICAL MATERIEL CORPORATION
MAMARONECK, NEW YORK

USE MATERIAL THICKNESS FOR MAX. RADIUS ON ALL BENDS UNLESS OTHERWISE SPECIFIED

MOUNT INSERTS AFTER FINISHING

FINISH NOTE -
S404 YELLOW IRIDITE (All Surfaces)
S114 Zinc Chromate Primer } All Inside Surfaces & Edges
S115 TMC Grey Enamel

ISSUE	ITEM	CHANGED FROM	DATE	CH. NO.	DRAFTS	CHECKER	ENG. APP.
C	1	8 C Holes Were A Holes	4-2-62	6572	LS	MS	[Signature]
B	1	S404 WAS S101	6/9/59	---	JR		[Signature]
A	1	FINISH WAS S254 RCAF Grey Wrinkle	4/16/58	1	VB		[Signature]

TOLERANCES		SCALE: FULL	
DEC. DIM. ±	MAXIMUM ALLOWABLE TOLERANCES HAVE BEEN DETERMINED AND ANY DEVIATIONS WILL BE CAUSE FOR REJECTION.	REQUIREMENT	USED ON
FRAC. DIM. ± 1/64	REMOVE ALL BURRS AND SHARP EDGES	2	ATS-70CU-2
ANGULAR DIM. ±		2	ATS-70CU

2	ATS-70CU-2		4-23-59
2	ATS-70CU	ATS-70	12-19-57
REQ. PER UNIT	MODEL	PROJECT NO.	DATE

REF: LD-389-1, -2

8	1	NT-129-440-4	NUT, ROUND, SWAGE TYPE	C
REQ. ITEM	PART NO.		DESCRIPTION	SYMBOL
.064 THK.			THE TECHNICAL MATERIEL CORP. MAMARONECK, NEW YORK	
Aluminum			BRACKET, END	
5052-H32			16 ² /19/57	[Signature]
TYPE & TEMPER		HEAT TREAT. SPEC.	DRAWN	CHECKED
SEE FINISH NOTE			[Signature]	[Signature]
FINISH & SPEC. NO.		ELC. DES. APP.	MECH. DES. APP.	MS-1177 C