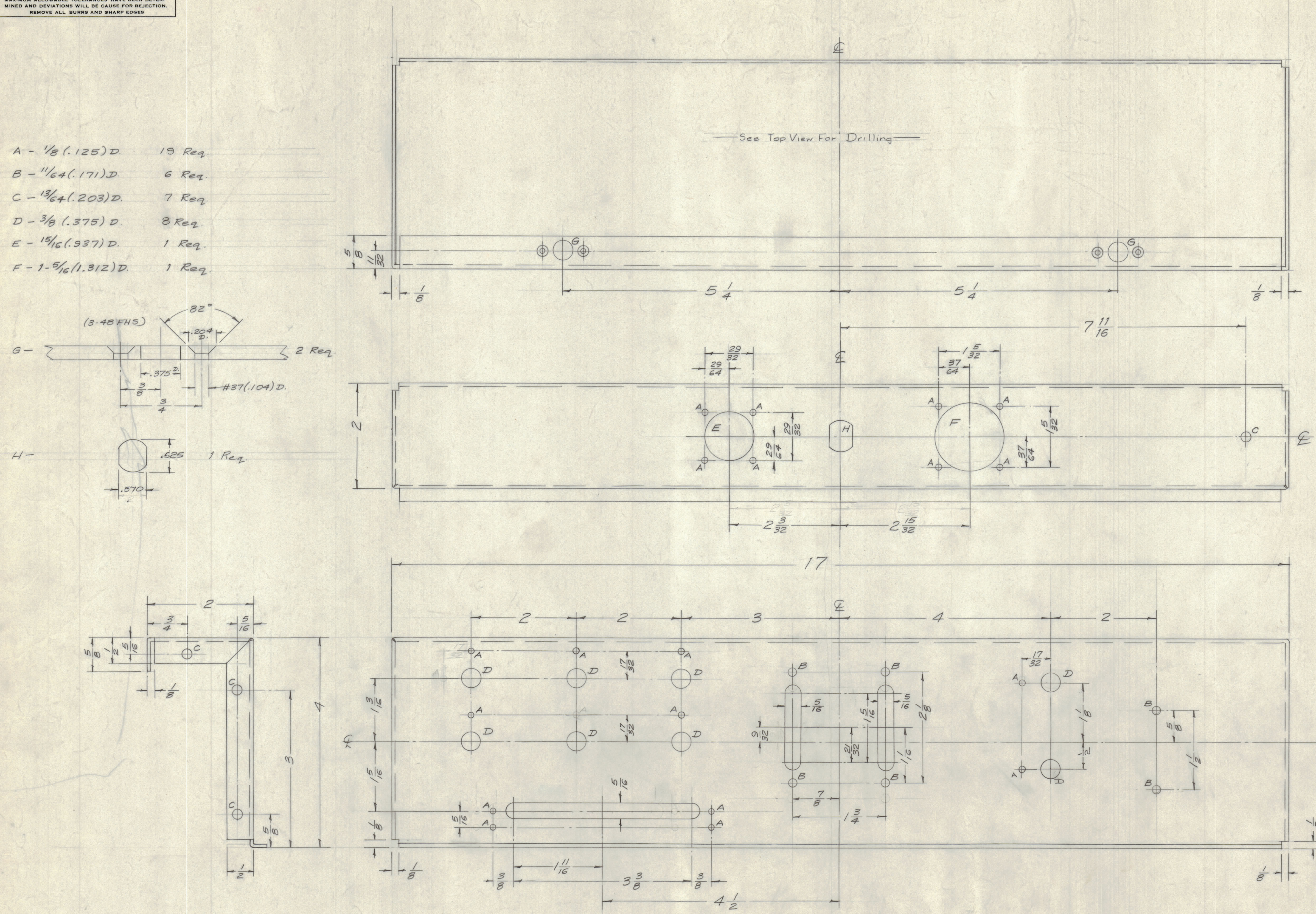
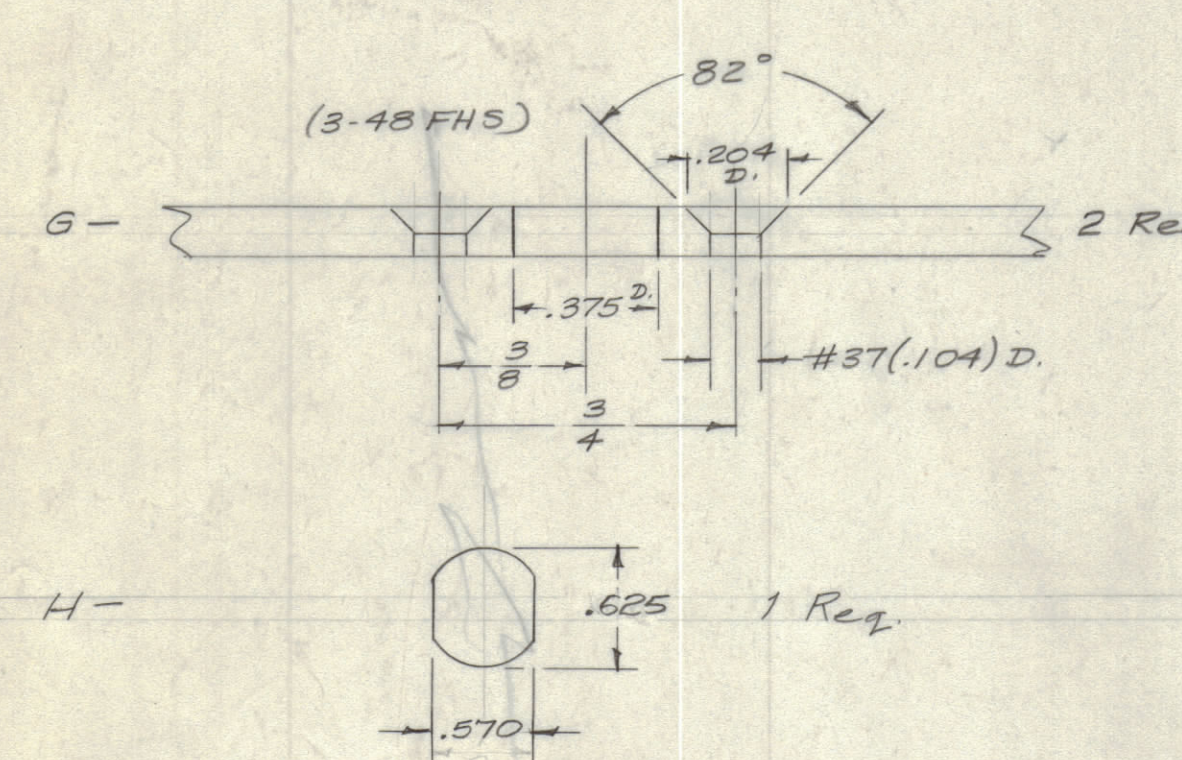


IF IT IS FOUND DESIRABLE TO CHANGE ANY TOLERANCE OR OTHER DETAIL SPECIFIED ON THIS DRAWING NOTIFY THE PURCHASER PROMPTLY.
 MAXIMUM ALLOWABLE TOLERANCES HAVE BEEN DETERMINED AND DEVIATIONS WILL BE CAUSE FOR REJECTION. REMOVE ALL BURRS AND SHARP EDGES

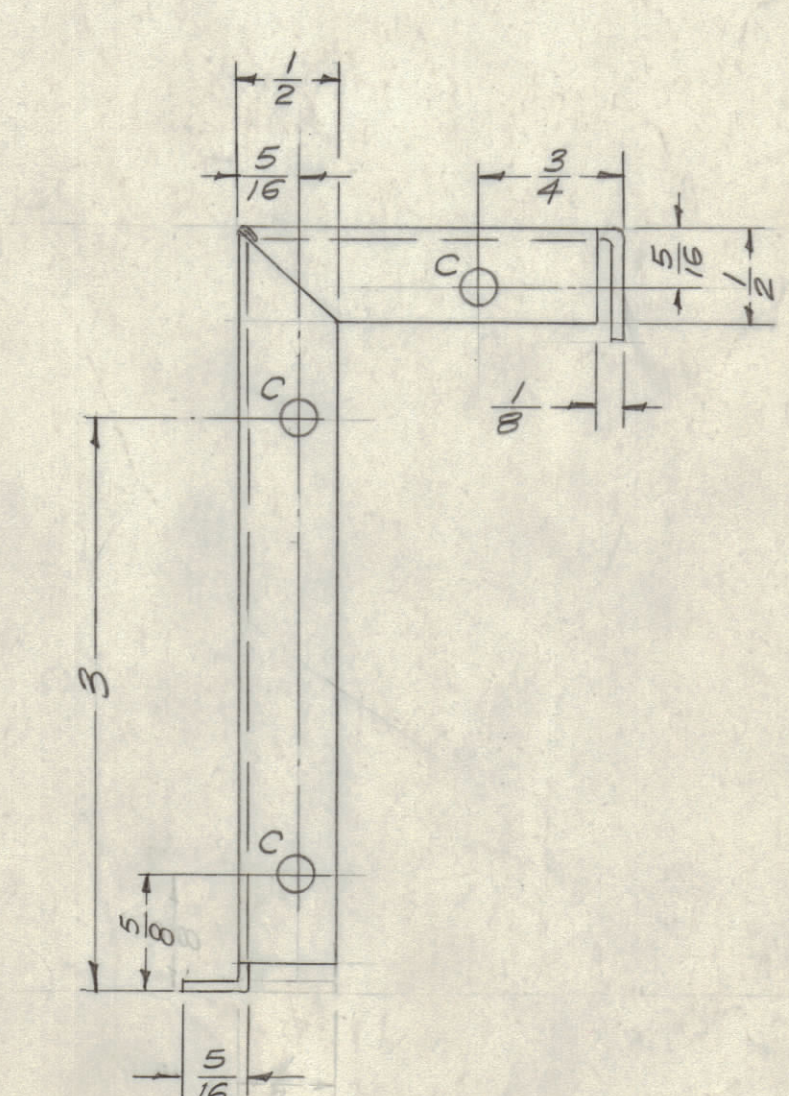
- A - $\frac{1}{8}$ (.125) D. 19 Req.
- B - $\frac{1}{64}$ (.0156) D. 6 Req.
- C - $\frac{13}{64}$ (.203) D. 7 Req.
- D - $\frac{3}{8}$ (.375) D. 8 Req.
- E - $\frac{15}{16}$ (.937) D. 1 Req.
- F - $1\frac{5}{16}$ (1.312) D. 1 Req.



See Top View For Drilling

NOTICE TO PERSONS RECEIVING THIS DRAWING.
 THE TECHNICAL MATERIEL CORPORATION claims proprietary right in the material disclosed herein. This drawing is issued in confidence for engineering information only and may not be reproduced or used to manufacture anything shown herein without permission from THE TECHNICAL MATERIEL CORPORATION to the user. This drawing is loaned for mutual assistance and is subject to recall at any time.
 Property of:
 THE TECHNICAL MATERIEL CORPORATION
 MAMARONECK, NEW YORK

C	S-404 YEL. IRIDITE WAS	12/61	1001	AB	EMN	
B	S-101 CAUSTIC DIP	1/58	2	16	HRE	
A	1/4" HOLE WAS 1/2 X 5/8 NOW IS .570 X .625	3/58	1	11	XAA	
ISSUE	CHANGED FROM	DATE	CN. NO.	DRAFTS	CHECKER	ENG. APP.
TOLERANCES						
SCALE:						
ALL OTHERS	DEC. DIM. ±	DRILL PUNCH, COMMERCIAL STOCK SIZES AND MANUFACTURERS TOLERANCES ARE NOT INCLUDED.				
	FRAC. DIM. ±					
	ANGULAR DIM. ±					



Ref. LD-373(B) STAMPING			
REQ. ITEM	PART NO.	DESCRIPTION	SYMBOL
	.064 THK.	THE TECHNICAL MATERIEL CORP. MAMARONECK, NEW YORK	
STOCK SIZE			
MATERIAL	WEIGHT PER PC	CHASSIS	
5052H32		ATS-MCU	
TYPE & TEMPER	DATE	DRAWN	ELEC. DES. APP. MECH. DES. APP.
	10/21/58		
HEAT TREAT. SPEC.		CHECKED	FINAL APPROVAL
1	ATS-MCU	PROJECT NO.	DATE 2-4-58
REQ PER UNIT	MODEL	ASSY. NO.	USED ON
			S-404 YEL. IRIDITE FINISH & SPEC. NO.
			MS-1160 C

MS-1160 C