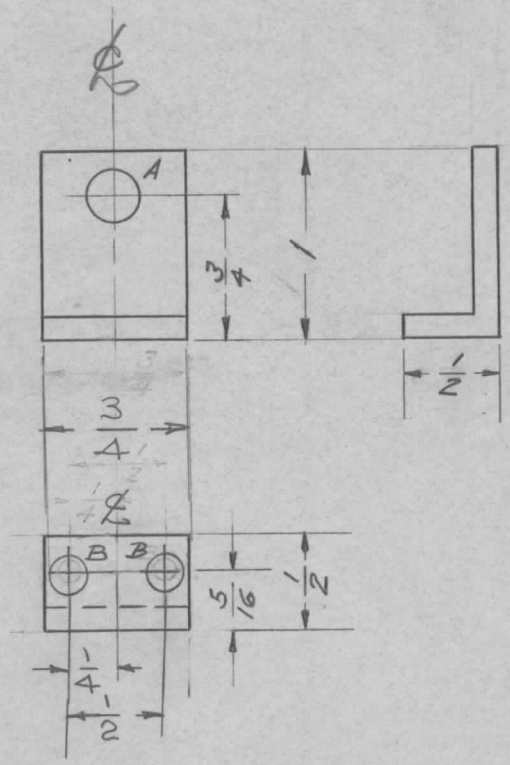


REQ. PER UNIT	USED ON			MS-1133	D
	MODEL	ASS'Y. NO.	DATE		
1	GPR-90-RX		8-22-57		



LEGEND
 A. 17/64 (.265) 1 REQ.
 B. 5/32 (.156) D. 4-10 2 REQ.

NOTE
 S-404 IRIDITE
 S-107 LACQUER

UNLESS OTHERWISE SPECIFIED
 DIMENSIONS ARE IN INCHES AND INCLUDE
 CHEMICALLY APPLIED OR PLATED FINISHES

DECIMALS	FRACTIONS
.X ± .05	± 1/64
.XX ± .01	ANGLES
.XXX ± .005	± 0° 30'

TOLERANCES

CUT HERE
 GUARANTEED
 2-66

ISSUE	ITEM	CHANGED FROM	DATE	CH. NO.	DRAFTS	CHECKER	ENG. APP.	REQ. ITEM	PART NO.	DESCRIPTION	SYMBOL				
D	1	"B" holes were 3/16 (.187) D.	4/26/61	4681	DAM	JCB	[Signature]								
C	1	STOCK .081 WAS 1X1/2XV8	5-23-60	2360	CW	JCB	[Signature]								
B	1	S404-IRIDITE WAS S101-CAUSTIC DIP	12-8 59	1001	P	JCB	[Signature]								
A	1	"B" holes were 1/8 D	10/23/57	1	[Signature]	LB	[Signature]								
TOLERANCES DEC. DIM. ± FRAC. DIM. ± 1/64 ANGULAR DIM. ±								SCALE: MAXIMUM ALLOWABLE TOLERANCES HAVE BEEN DETERMINED AND ANY DEVIATIONS WILL BE CAUSE FOR REJECTION. REMOVE ALL BURRS AND SHARP EDGES		6063-75 TYPE & TEMPER HEAT TREAT. SPEC.		8-22-57 DRAWN CHECKED		AMB FINAL APPROVAL	
								SEE NOTE FINISH & SPEC. NO.		P.L.K. ELEC. DES. APP. MECH. DES. APP.		MS-1133 D			