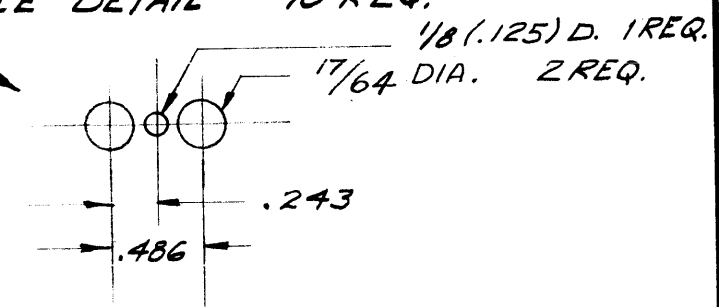


LEGEND

- A - 3/16 (.187) D. 1 REQ.
- B - 1/8 X 1/4 2 SLOTS REQ.
- C - DRILL & C'SINK 3/48 2 REQ.
- D - 3/8 (.375) D. 1 REQ.
- E - SEE DETAIL 10 REQ.



NOTE:
S-404 YELLOW IRIDITE

NOTICE TO PERSONS RECEIVING THIS DRAWING

THE TECHNICAL MATERIEL CORPORATION claims proprietary right in the material disclosed hereon. This drawing is issued in confidence for engineering information only and may not be reproduced or used to manufacture anything shown hereon without permission from THE TECHNICAL MATERIEL CORPORATION to the user. This drawing is loaned for mutual assistance and is subject to recall at any time.

Property of:
THE TECHNICAL MATERIEL CORPORATION
MAMARONECK, NEW YORK

REF. LD-368

ISSUE	ITEM	CHANGED FROM	DATE	CH. NO.	DRAFTS	CHECKER	ENG. APP.
C	1	"E"-DETAIL 17/64 WAS 1/4	4.16.64	11207	KB	@	MMK
B	1	S-404 WAS S-101	12/14/59	1001	AB		EMN
A	2	13/16 Replaced 1/4	9-25-57	1	SE		
	1	13/16 Overall Was 13/8					

TOLERANCES		SCALE:
DEC. DIM. ±		MAXIMUM ALLOWABLE TOLERANCES HAVE BEEN DETERMINED AND ANY DEVIATIONS WILL BE CAUSE FOR REJECTION. REMOVE ALL BURRS AND SHARP EDGES
FRAC. DIM. ±	1/64	
ANGULAR DIM. ±		

REQ. PER UNIT	MODEL	PROJECT NO.	ASSY. NO.	DATE
1	GPR 90 RX			8-22-57

REQ. ITEM	PART NO.	DESCRIPTION	SYMBOL
	.064	THE TECHNICAL MATERIEL CORP. MAMARONECK, NEW YORK	
	STOCK SIZE		
	ALUMINUM	XTAL CHASSIS	
		GPR 90 RX	
5052-H32		8-22-57	MMK
TYPE & TEMPER	HEAT TREAT. SPEC.	DRAWN	CHECKED
SEE NOTE			
FINISH & SPEC. NO.		ELEC. DES. APP.	MECH. DES. APP.

MS-1132 C