

IF IT IS FOUND DESIRABLE TO CHANGE ANY TOLERANCE OR OTHER DETAIL SPECIFIED ON THIS DRAWING NOTIFY THE PURCHASER PROMPTLY.

MAXIMUM ALLOWABLE TOLERANCES HAVE BEEN DETERMINED AND DEVIATIONS WILL BE CAUSE FOR REJECTION. REMOVE ALL BURRS AND SHARP EDGES

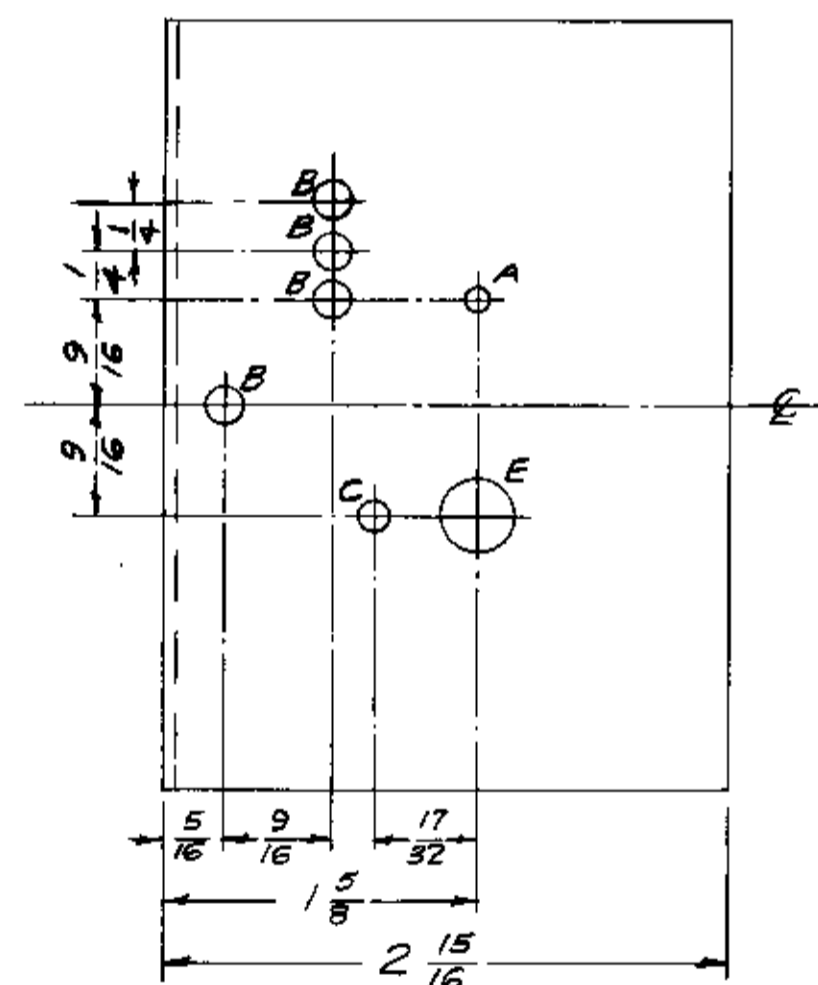
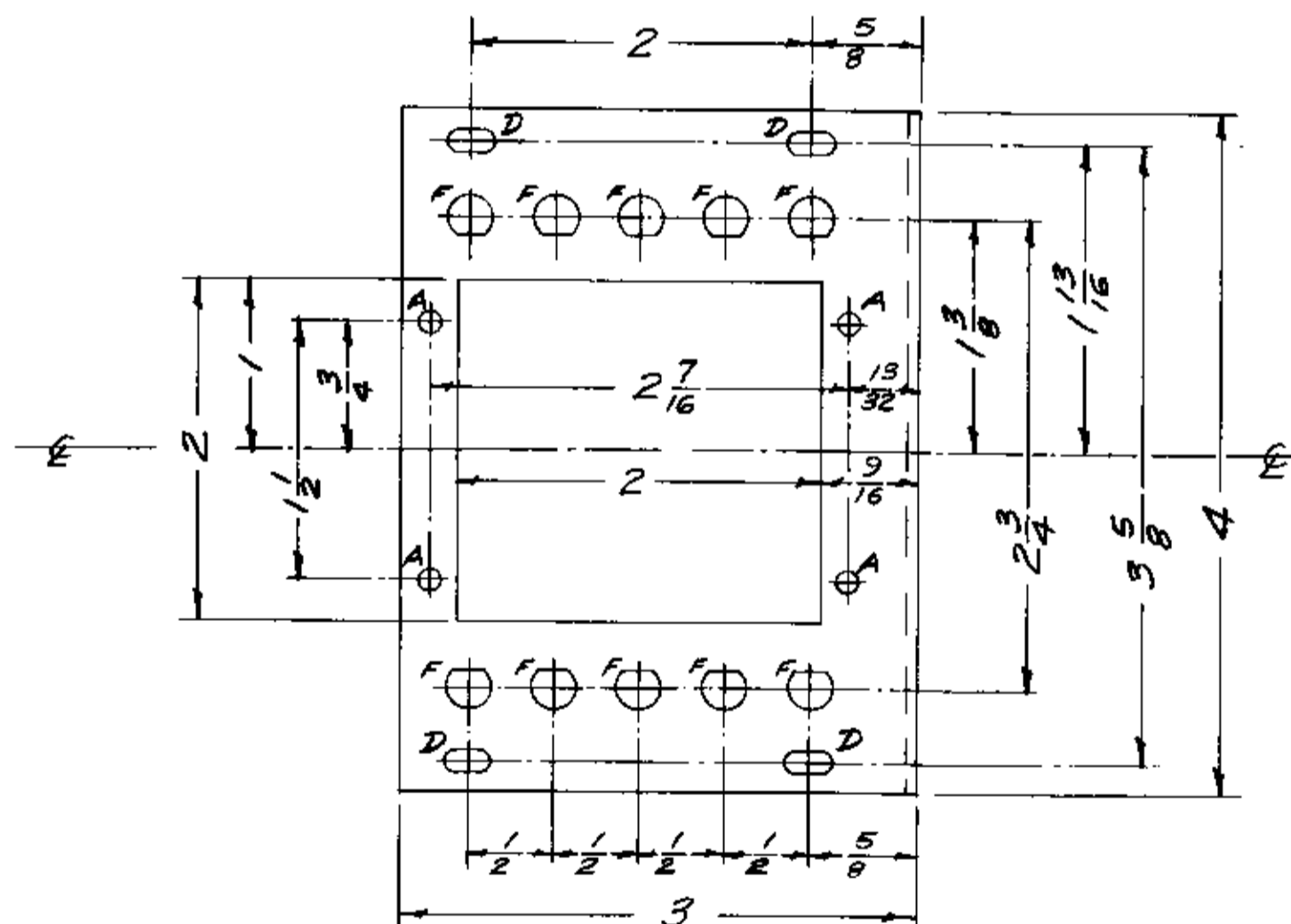
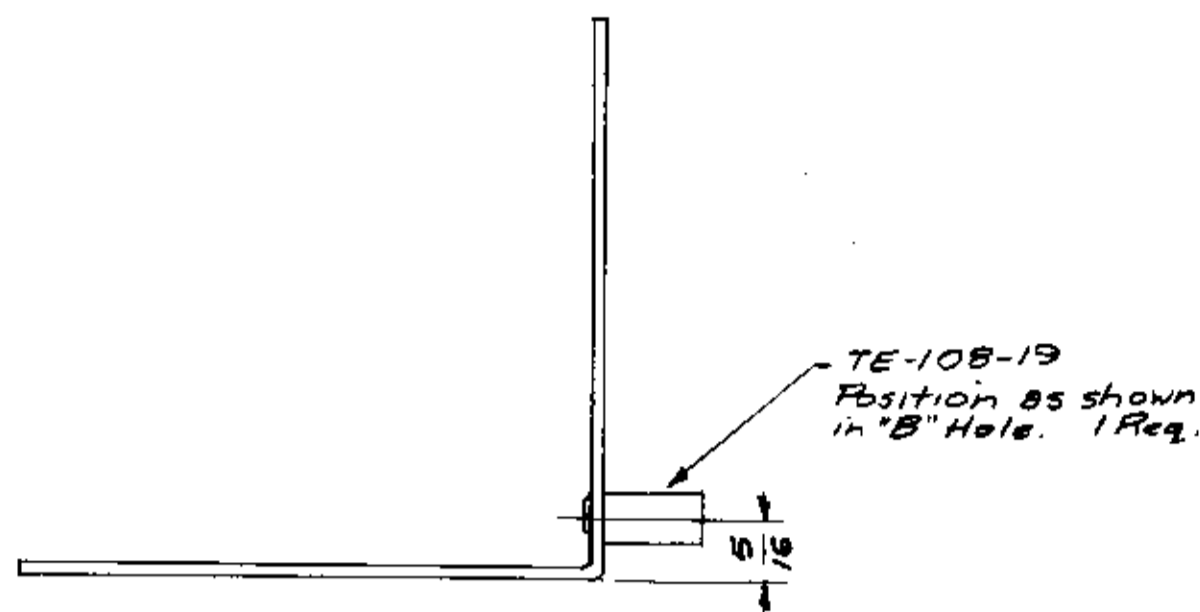
**NOTICE TO PERSONS RECEIVING THIS DRAWING**

THE TECHNICAL MATERIEL CORPORATION claims proprietary right in the material disclosed hereon. This drawing is issued in confidence for engineering information only and may not be reproduced or used to manufacture anything shown hereon without permission from THE TECHNICAL MATERIEL CORPORATION to the user. This drawing is loaned for mutual assistance and is subject to recall at any time.

Property of:

THE TECHNICAL MATERIEL CORPORATION  
MAMARONECK, NEW YORK

- A -  $\frac{1}{8}$  (.125) D. 5 Req.
- B -  $\frac{3}{16}$  (.187) D. 4 Req.
- C -  $\frac{5}{32}$  (.156) D. 1 Req.
- D -  $\frac{1}{8} \times \frac{1}{4}$  SLOTS 4 Req.
- E -  $\frac{3}{8}$  (.375) D. 1 Req.
- F -  $\frac{1}{16}$  (.0625) D. 10 Req.



MS-1110 D

REF - MS-1139 Inner Shell, Btm.  
MS-1109 Cover, Inner Shell  
LD-365-1 Stamping

ISSUE	ITEM	CHANGED FROM	DATE	CR. NO.	DRAFTS	CHECKER	ENG. APP.
D	1	1.8" HOLE ADDED	8/24/57	5702	HLW	RLB	EMN
C	1	2" X 2" CUTOUT WAS 2-1/8 X 2" CUTOUT	5-10-57	2934	RLB	JCS	EMN
B	1	SA-04 - IRIDIUM S/DI - CAUSTIC DIP	12-9-57	1001	P		EMN
A	1	Redrawn - Made into two dwgs. - Top & Btm. SEC MS-1139 for Btm.	9/30/57	1	16		EMN

SCALE: FULL

TOLERANCES: DEC. DIM.  $\pm 1/64$ , FRAG. DIM.  $\pm$ , ANGULAR DIM.  $\pm$

DRILL PUNCH, COMMERCIAL STOCK SIZES AND MANUFACTURERS TOLERANCES ARE NOT INCLUDED.

REQ. PER UNIT	MODEL	PROJECT NO.	ASBY. NO.	DATE
1	SBE-3	AO-102		12-2-59
1	SBE-2		A-1516	5-2-58
1	SBE-1			9-30-57

USED ON

REQ. ITEM	PART NO.	DESCRIPTION	SYMBOL
	.064	THE TECHNICAL MATERIEL CORP. MAMARONECK, NEW YORK	
	Aluminum	INNER SHELL, TOP,	
	5052-H32	XTAL OVEN	
	16 9/30/57	2AP	
	SA-04-YEL-IRIDIUM	FINISH & SPEC. NO.	

MS-1110 D