

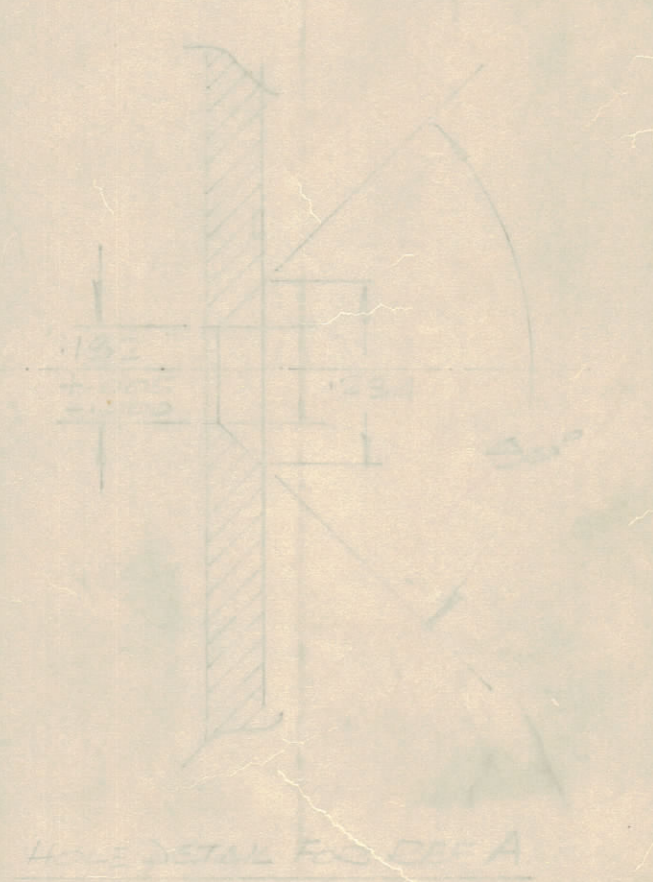
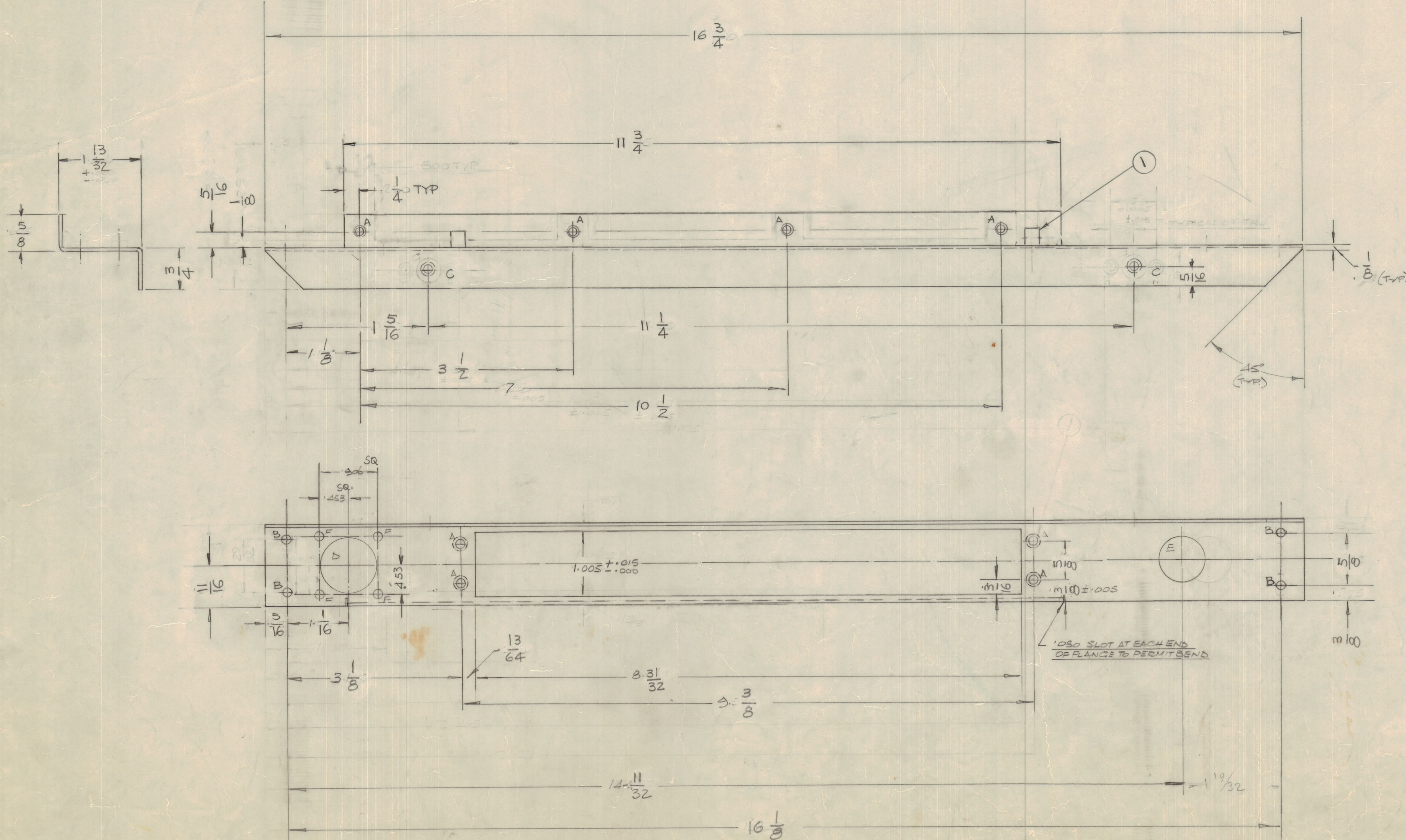
MS 10336 E

REQ	ITEM	PART NO	DESCRIPTION	SYMBOL
B	1	NT29-0440-4	NUT, ROUND	A
Z	2	NT29-0632-4	NUT, ROUND	C

IF IT IS FOUND DESIRABLE TO CHANGE ANY TOLERANCE OR OTHER DETAIL SPECIFIED ON THIS DRAWING NOTIFY THE PURCHASER PROMPTLY.

MAXIMUM ALLOWABLE TOLERANCES HAVE BEEN DETERMINED AND DEVIATIONS WILL BE CAUSE FOR REJECTION. REMOVE ALL BURRS AND SHARP EDGES.

ISSUE	ITEM	CHANGED FROM	DATE	CN. NO.	DRAFTS	CHECKER	ENG. APP.
Ø		RELEASED TO PROD	3/11/68		JB		
A		CHANGED AS PER CEMN	4 DEC 1968	410	RB		
B		REV AS CEMN	DEC 7/68	413	AP		
C		REV AS PER CEMN	30 JAN 69	436	RB		
D		REV PER CEMN	23 NOV 71	1096	DR	LB	



HOLE DETAILS ~

REF	Nº	DETAIL
A	8	.161-.164 DIA
B	4	.171 DIA
C	2	.191-.194 DIA
D	1	DRILL 5/16 DIA.
E	1	DRILL 3/4 DIA.
F	4	DRILL .140 DIA.

NO LONGER REQUIRED
USE MS 6968

TOLEANCE ~
± .015 UNLESS OTHERWISE STATED
BENDS - .06 INT RAD.

TOLERANCES UNLESS OTHERWISE SPECIFIED	SCALE: FULL
ALL DEC DIM ± .005	DRILL PUNCH, COMMERCIAL STOCK SIZES AND MANUFACTURERS TOLERANCES ARE NOT INCLUDED
OTHERS ± .015	
ANGULAR DIM ± 0° 30'	

NOTE: 1. ITEM 1 TO BE FITTED AFTER SILKSCREENING AND FINISHING

REF LD 10311

.062 THICK STOCK SIZE		TMC (Canada) LIMITED OTTAWA ONTARIO	
ALUM. ALLOY		PANEL, EAR	
MATERIAL	WEIGHT PER PC		
57 S - H34			
TYPE & TEMPER		BARTLETT	
		DRAWN	ELEC. DES. APP.
		CHECKED	MECH. DES. APP.
HEAT TREAT. SPEC.		FINAL APPROVAL	
100ITE 3101		MS 10336 D	
FINISH & SPEC NO.			

AMC 850 & 75 Ω LD 10311 17 OCT 68

MODEL	PROJECT NO.	ASS'Y. NO.	DATE

USED ON