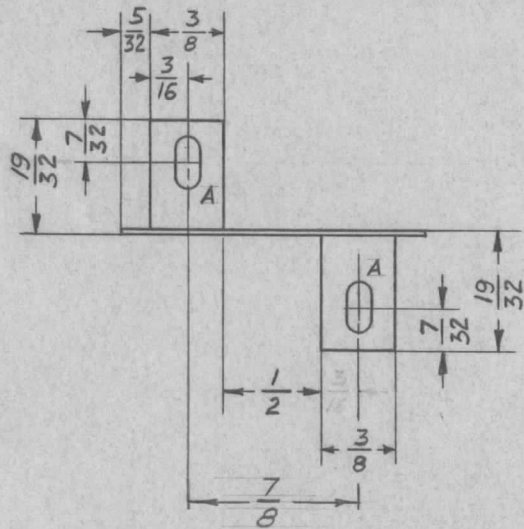
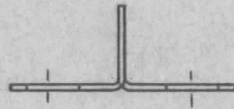
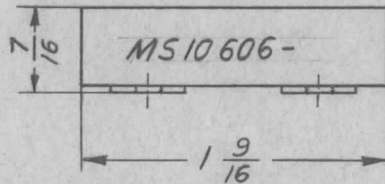


ISSUE	ITEM	CHANGED FROM	DATE	CN. NO.	DRAFTS	CHECKER	ENG. APP.	REQ.	ITEM	PART NO.	DESCRIPTION	SYMBOL
Ø		RELEASED FOR PRODUCTION	11-1-66		RD							



- UNLESS OTHERWISE SPECIFIED:
1. USE MATERIAL THICKNESS FOR MAXIMUM RADIUS ON ALL BENDS
 2. ALL ANGULAR BENDS 90 DEGREES
 3. REMOVE ALL BURRS AND SHARP EDGES

HOLE A - SLOT - 9/64 x 9/32



METAL STAMP TMC PART NO. 1/8
HIGH GOTHIC W/LATEST REVISION LETTER

AMC 20	020/65	A 10 376	29-10-65	.021 THK.		TMC (Canada) LIMITED OTTAWA ONTARIO	
MODEL	PROJECT NO.	ASS'Y. NO.	DATE	STOCK SIZE			
USED ON				COPPER	SHIELD, OUTPUT		
MAXIMUM ALLOWABLE TOLERANCES HAVE BEEN DETERMINED AND DEVIATIONS WILL BE CAUSE FOR REJECTION. REMOVE ALL BURRS AND SHARP EDGES				IF IT IS FOUND DESIRABLE TO CHANGE ANY TOLERANCE OR OTHER DETAIL SPECIFIED ON THIS DRAWING NOTIFY THE PURCHASER PROMPTLY.		(PRE-AMP)	
				SCALE 1:1		MATERIAL WEIGHT PER PC.	
TOLERANCES				TYPE & TEMPER		Drawn	MECH. DES. APP.
ALL OTHERS DEC. DIM. ± FRAC. DIM. ± 1/64 ANGULAR DIM. ± 0° 30'				DIMENSIONS IN INCHES UNLESS OTHERWISE SPECIFIED		DRAWN	ELEC. DES. APP.
				DRILL, PUNCH, COMMERCIAL STOCK SIZES AND MANUFACTURERS TOLERANCES ARE NOT INCLUDED.		HEAT TREAT. SPEC.	
				S 245 SILVER PLATE		CHECKED	FINAL APPROVAL
				FINISH & SPEC. NO.		MS 10 606 Ø	