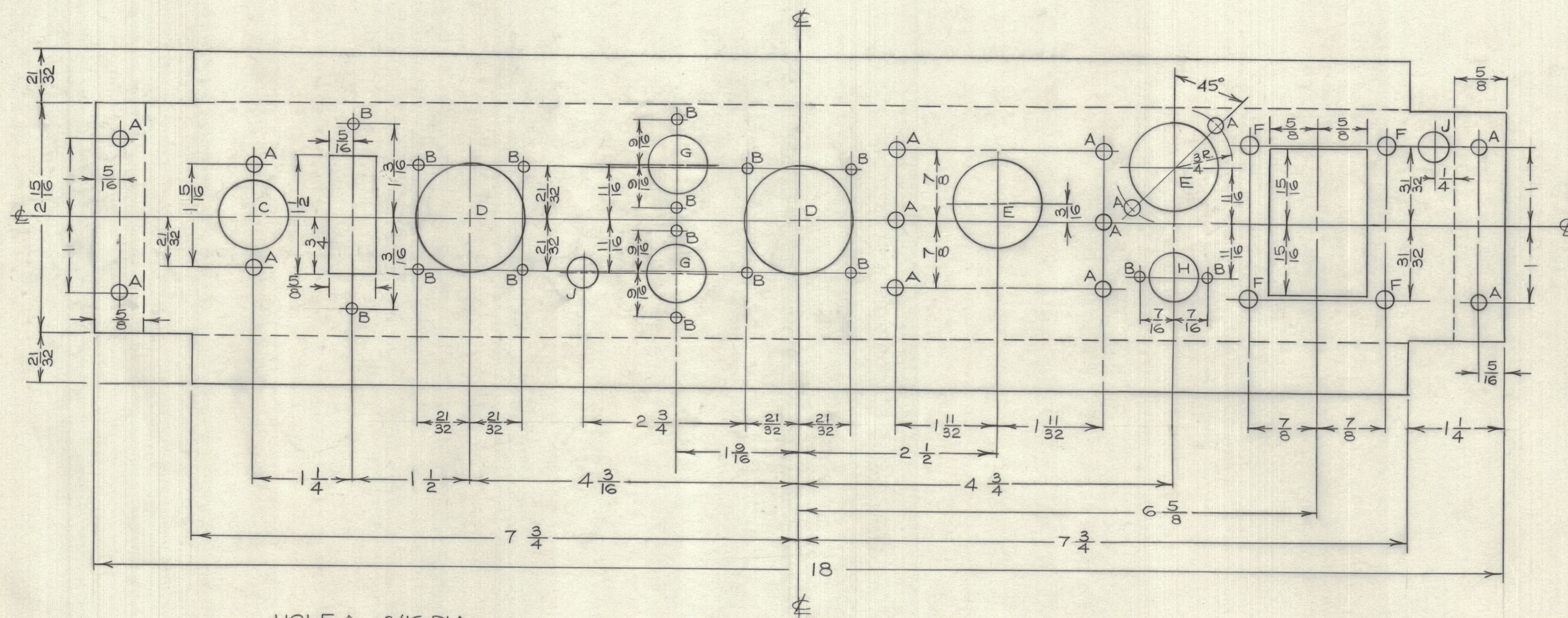


IF IT IS FOUND DESIRABLE TO CHANGE ANY TOLERANCE OR OTHER DETAIL SPECIFIED ON THIS DRAWING NOTIFY THE PURCHASER PROMPTLY.
 MAXIMUM ALLOWABLE TOLERANCES HAVE BEEN DETERMINED AND DEVIATIONS WILL BE CAUSE FOR REJECTION. REMOVE ALL BURRS AND SHARP EDGES.

NOTICE TO PERSONS RECEIVING THIS DRAWING

THE TECHNICAL MATERIEL CORPORATION claims proprietary right in the material disclosed herein. This drawing is issued in confidence for engineering information only and may not be reproduced or used to manufacture anything shown hereon without permission from THE TECHNICAL MATERIEL CORPORATION to the user. This drawing is loaned for mutual assistance and is subject to recall at any time.

Property of:
 THE TECHNICAL MATERIEL CORPORATION
 MAMARONECK, NEW YORK



- HOLE A - 3/16 DIA.
- B - 1/8 —
- C - 7/8 —
- D - 1-3/8 —
- E - 1-1/8 —
- F - 7/32 —
- G - 3/4 —
- H - 5/8 —
- J - 3/8 —

NOTE: BEND UP TO 90° ON ALL DOTTED LINES.

MS10508

ISSUE	ITEM	CHANGED FROM	DATE	CH. NO.	DRAFTS	CHECKER	ENG. APP.
TOLERANCES							
ALL DEC. DIM. ±				SCALE: N.T.S.			
OTHERS FRAC. DIM. ±				DRILL, PUNCH, COMMERCIAL STOCK			
				SIZES AND MANUFACTURERS			
				TOLERANCES ARE NOT INCLUDED.			

VCR-1 MOD CAN-1.

JAN. 12 1961

MODEL	PROJECT NO.	ASS'Y. NO.	DATE

REQ. ITEM	PART NO.	DESCRIPTION	SYMBOL
.064 TK.		TMC (Canada) LIMITED	
STOCK SIZE		OTTAWA ONTARIO	
ALUM.		BARRIER	
MATERIAL	WEIGHT PER PC.		
TYPE & TEMPER	JPC		
DRAWN		ELEC. DES. APP.	
HEAT TREAT. SPEC.		MECH. DES. APP.	
CHECKED		FINAL APPROVAL	
FINISH & SPEC. No.			

S101 & S404

MS10508