

IF IT IS FOUND DESIRABLE TO CHANGE ANY TOLERANCE OR OTHER DETAIL SPECIFIED ON THIS DRAWING NOTIFY THE PURCHASER PROMPTLY.

MS10490

MAXIMUM ALLOWABLE TOLERANCES HAVE BEEN DETERMINED AND DEVIATIONS WILL BE CAUSE FOR REJECTION. REMOVE ALL BURRS AND SHARP EDGES

USED ON

MODEL

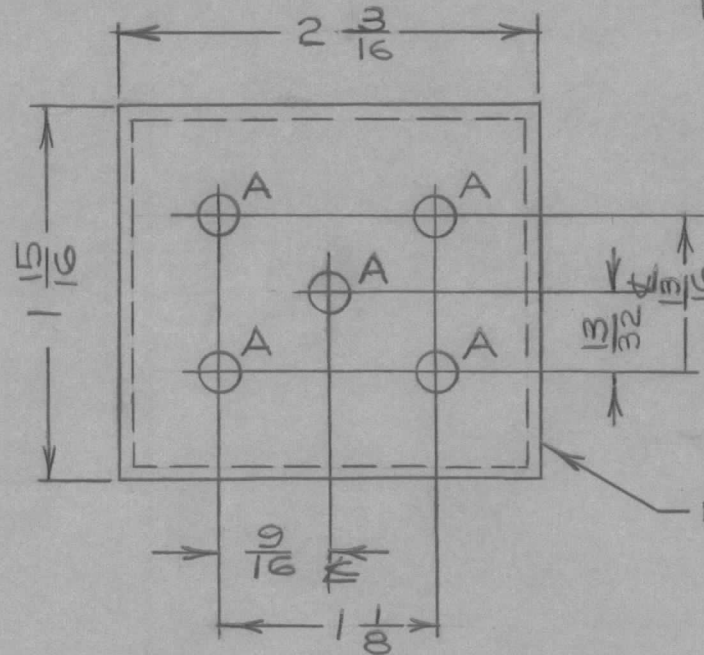
PROJECT NO.

ASS'Y. NO.

DATE

TR155

2/12/60.



HOLE A - 13/64 DIA.

REF: BX100-8

NOTICE TO PERSONS RECEIVING THIS DRAWING

THE TECHNICAL MATERIEL CORPORATION claims proprietary right in the material disclosed hereon. This drawing is issued in confidence for engineering information only and may not be reproduced or used to manufacture anything shown hereon without permission from THE TECHNICAL MATERIEL CORPORATION to the user. This drawing is loaned for mutual assistance and is subject to recall at any time.

Property of:

THE TECHNICAL MATERIEL CORPORATION
MAMARONECK, NEW YORK

| REQ. | ITEM | PART NO. | DESCRIPTION | SYMBOL |
|------|------|--------------------|---|---------------------------------|
| | | | TMC (Canada) LIMITED OTTAWA ONTARIO | |
| | | STOCK SIZE | MACHINING, XFMR TR155 | |
| | | MATERIAL | WEIGHT PER PC. | |
| | | | BASE. | |
| | | TYPE & TEMPER | J.P.C. | <i>u. Kr.</i> |
| | | | DRAWN | ELEC. DES. APP. MECH. DES. APP. |
| | | | CHECKED | FINAL APPROVAL |
| | | HEAT TREAT. SPEC. | | |
| | | FINISH & SPEC. NO. | | |
| | | | | MS10490 |

| ISSUE | ITEM | CHANGED FROM | DATE | CN. NO. | DRAFTS | CHECKER | ENG. APP. |
|------------|------|---|---|-----------|--------|---------|-----------|
| TOLERANCES | | | | SCALE 1:1 | | | |
| ALL OTHERS | | DEC. DIM. ± FRAC. DIM. ± ANGULAR DIM. ± | DIMENSIONS IN INCHES UNLESS OTHERWISE SPECIFIED DRILL, PUNCH, COMMERCIAL STOCK SIZES AND MANUFACTURERS TOLERANCES ARE NOT INCLUDED. | | | | |