

IF IT IS FOUND DESIRABLE TO CHANGE ANY TOLERANCE OR OTHER DETAIL SPECIFIED ON THIS DRAWING NOTIFY THE PURCHASER PROMPTLY.

MS10484

MAXIMUM ALLOWABLE TOLERANCES HAVE BEEN DETERMINED AND DEVIATIONS WILL BE CAUSE FOR REJECTION. REMOVE ALL BURRS AND SHARP EDGES

USED ON

MODEL

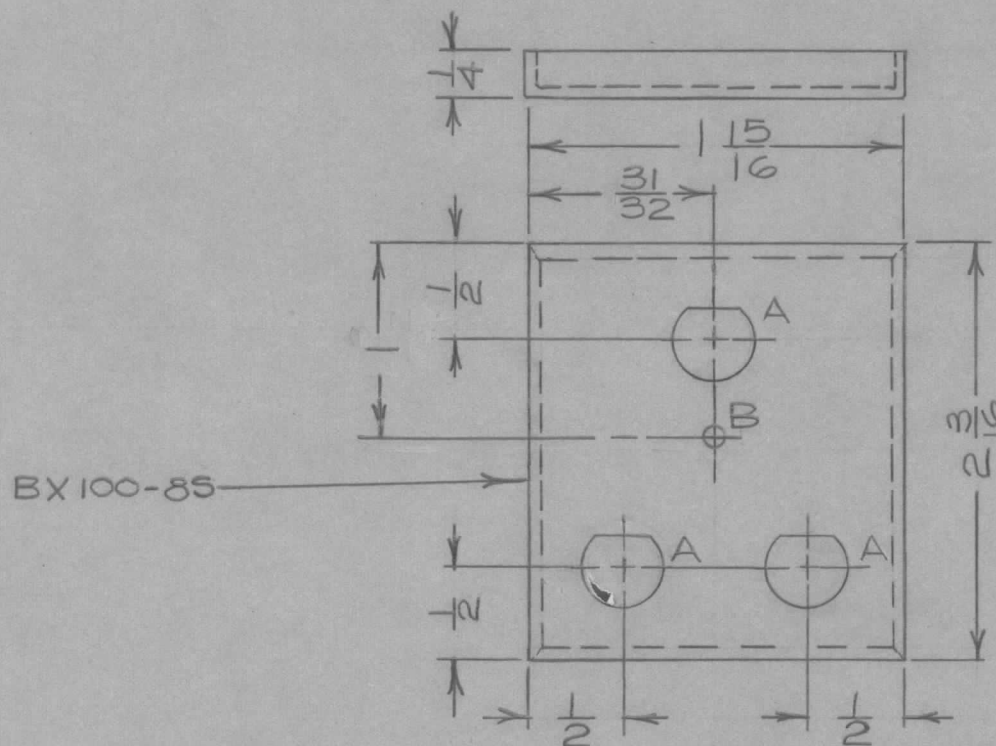
PROJECT NO.

ASS'Y. NO.

DATE

MSR

10/7/60



HOLE A = 7/16 DIA. D-HOLE.
HOLE B = 1/8 DIA.

NOTE:
EDGES TO SOLDERED &
SANDED.

REQ.	ITEM	PART NO.	DESCRIPTION	SYMBOL
			TMC(Canada)LIMITED OTTAWA ONTARIO	
		STOCK SIZE	LID, TRANSFORMER	
		MATERIAL	CAN, MACHINING	
		WEIGHT PER PC.	JPC	
		TYPE & TEMPER	DRAWN	ELEC. DES. APP. MECH. DES. APP.
		HEAT TREAT. SPEC.	CHECKED	FINAL APPROVAL
		FINISH & SPEC. NO.	TMC GREY	MS10484

ISSUE	ITEM	CHANGED FROM	DATE	CN. NO.	DRAFTS	CHECKER	ENG. APP.
ALL OTHERS		DEC. DIM. ± FRAC. DIM. ± 1/64 ANGULAR DIM. ±					

TOLERANCES

SCALE 1:1

DIMENSIONS IN INCHES UNLESS OTHERWISE SPECIFIED

DRILL, PUNCH, COMMERCIAL STOCK SIZES AND MANUFACTURERS TOLERANCES ARE NOT INCLUDED.