

IF IT IS FOUND DESIRABLE TO CHANGE ANY TOLERANCE OR OTHER DETAIL SPECIFIED ON THIS DRAWING NOTIFY THE PURCHASER PROMPTLY.

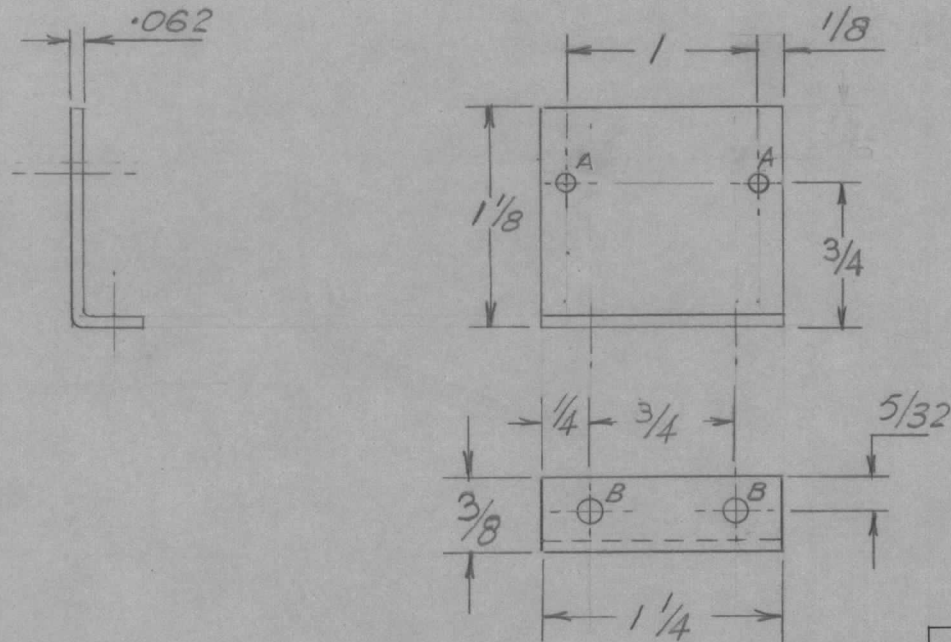
MS-10471 A

MAXIMUM ALLOWABLE TOLERANCES HAVE BEEN DETERMINED AND DEVIATIONS WILL BE CAUSE FOR REJECTION. REMOVE ALL BURRS AND SHARP EDGES

USED ON

MODEL	PROJECT NO.	ASS'Y. NO.	DATE
DA-101	CE-5107		11 AUG '60

HOLE SIZES	
A	N°42 DRILL
B	1/8 DIA.



NOTICE TO PERSONS RECEIVING THIS DRAWING

THE TECHNICAL MATERIEL CORPORATION claims proprietary right in the material disclosed hereon. This drawing is issued in confidence for engineering information only and may not be reproduced or used to manufacture anything shown hereon without permission from THE TECHNICAL MATERIEL CORPORATION to the user. This drawing is loaned for mutual assistance and is subject to recall at any time.

Property of:

THE TECHNICAL MATERIEL CORPORATION
MAMARONECK, NEW YORK

REQ.	ITEM	PART NO.	DESCRIPTION	SYMBOL
	.062		TMC (Canada) LIMITED OTTAWA ONTARIO	
	STOCK SIZE			
	ALUM. ALLOY		BRACKET-MOUNTING POTENTIOMETER	
	MATERIAL	WEIGHT PER PC.		
			WH DAVISON	M. W.
			DRAWN	ELEC. DES. APP.
			CHECKED	FINAL APPROVAL
				MS-10471
				A

ISSUE	ITEM	CHANGED FROM	DATE	CN. NO.	DRAFTS	CHECKER	ENG. APP.
A		DA101 WAS LMC-10	4/11 1960		JPC	LHS	MKS

TOLERANCES		SCALE
ALL OTHERS	DEC. DIM. ± FRAC. DIM. ± 1/64 ANGULAR DIM. ±	1:1

DIMENSIONS IN INCHES UNLESS OTHERWISE SPECIFIED
DRILL, PUNCH, COMMERCIAL STOCK SIZES AND MANUFACTURERS TOLERANCES ARE NOT INCLUDED.