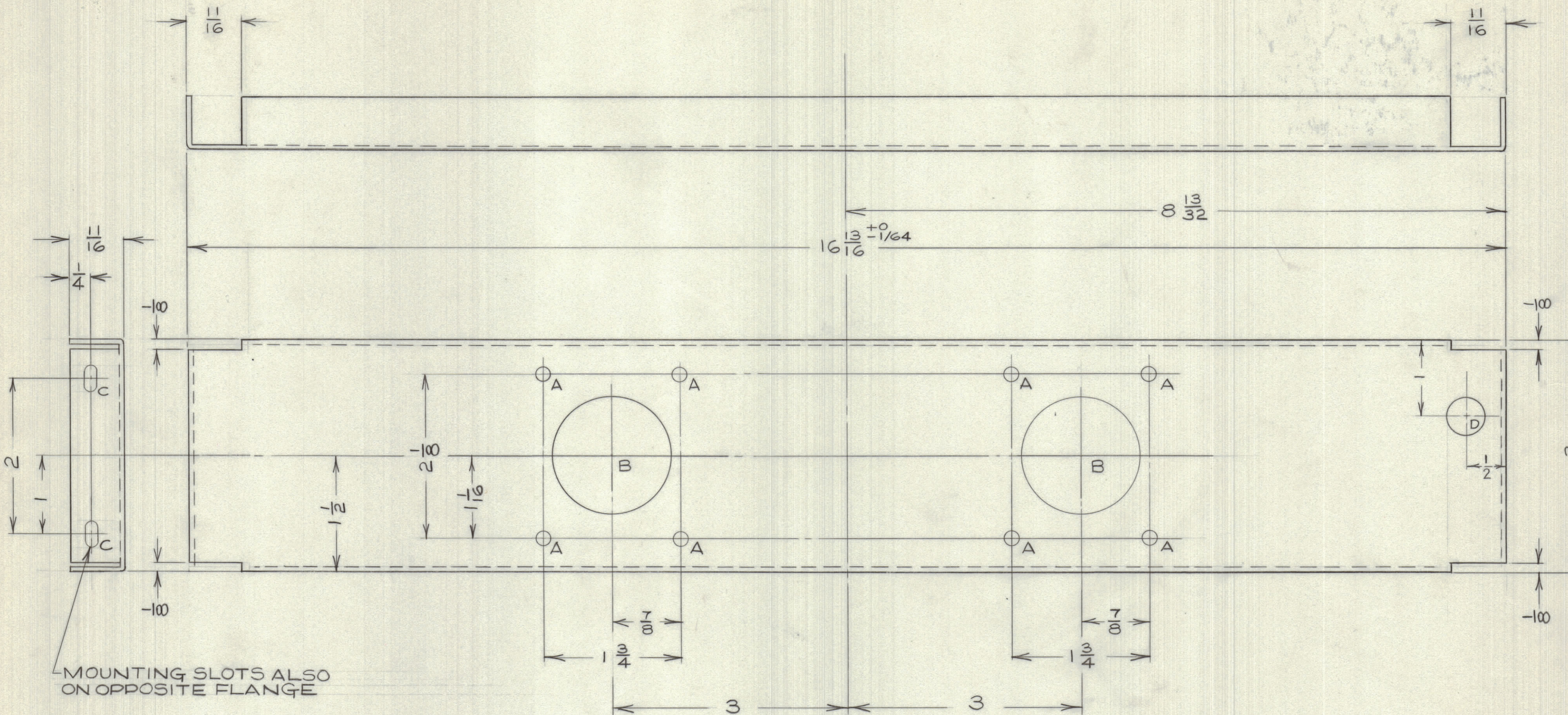


IF IT IS FOUND DESIRABLE TO CHANGE ANY TOLERANCE OR OTHER DETAIL SPECIFIED ON THIS DRAWING NOTIFY THE PURCHASER PROMPTLY.

MAXIMUM ALLOWABLE TOLERANCES HAVE BEEN DETERMINED AND DEVIATIONS WILL BE CAUSE FOR REJECTION. REMOVE ALL BURRS AND SHARP EDGES



MS10374

- HOLE A - 13/64 DIA
- HOLE B - 1-1/2 DIA
- HOLE C - 11/64 X 11/32 SLOT
- HOLE D - 1/2 DIA

NOTICE TO PERSONS RECEIVING THIS DRAWING

THE TECHNICAL MATERIEL CORPORATION claims proprietary right in the material disclosed hereon. This drawing is issued in confidence for engineering information only and may not be reproduced or used to manufacture anything shown hereon without permission from THE TECHNICAL MATERIEL CORPORATION to the user. This drawing is loaned for mutual assistance and is subject to recall at any time.

Property of:

THE TECHNICAL MATERIEL CORPORATION
MAMARONECK, NEW YORK

TTF-2

NOV4/59

ISSUE	ITEM	CHANGED FROM	DATE	CN. NO.	DRAFTS	CHECKER	ENG. APP.
TOLERANCES		SCALE: 1 : 1					
ALL OTHERS	DEC. DIM. ± FRAC. DIM. ± ANGULAR DIM. ±	DRILL, PUNCH, COMMERCIAL STOCK SIZES AND MANUFACTURERS TOLERANCES ARE NOT INCLUDED.					

REQ.	ITEM	PART No.	DESCRIPTION	SYMBOL
	14 GA. SH		TMC (Canada) LIMITED	
	STOCK SIZE		OTTAWA	ONTARIO
	ALUMINUM		BARRIER	
	MATERIAL	WEIGHT PER PC.	TTF-2	
	TYPE & TEMPER		DCM	
	HEAT TREAT. SPEC.		DRAWN	ELEC. DES. APP. MECH. DES. APP.
			CHECKED	FINAL APPROVAL
	ETCH & IRIDITE			MS10374
	FINISH & SPEC. No.			