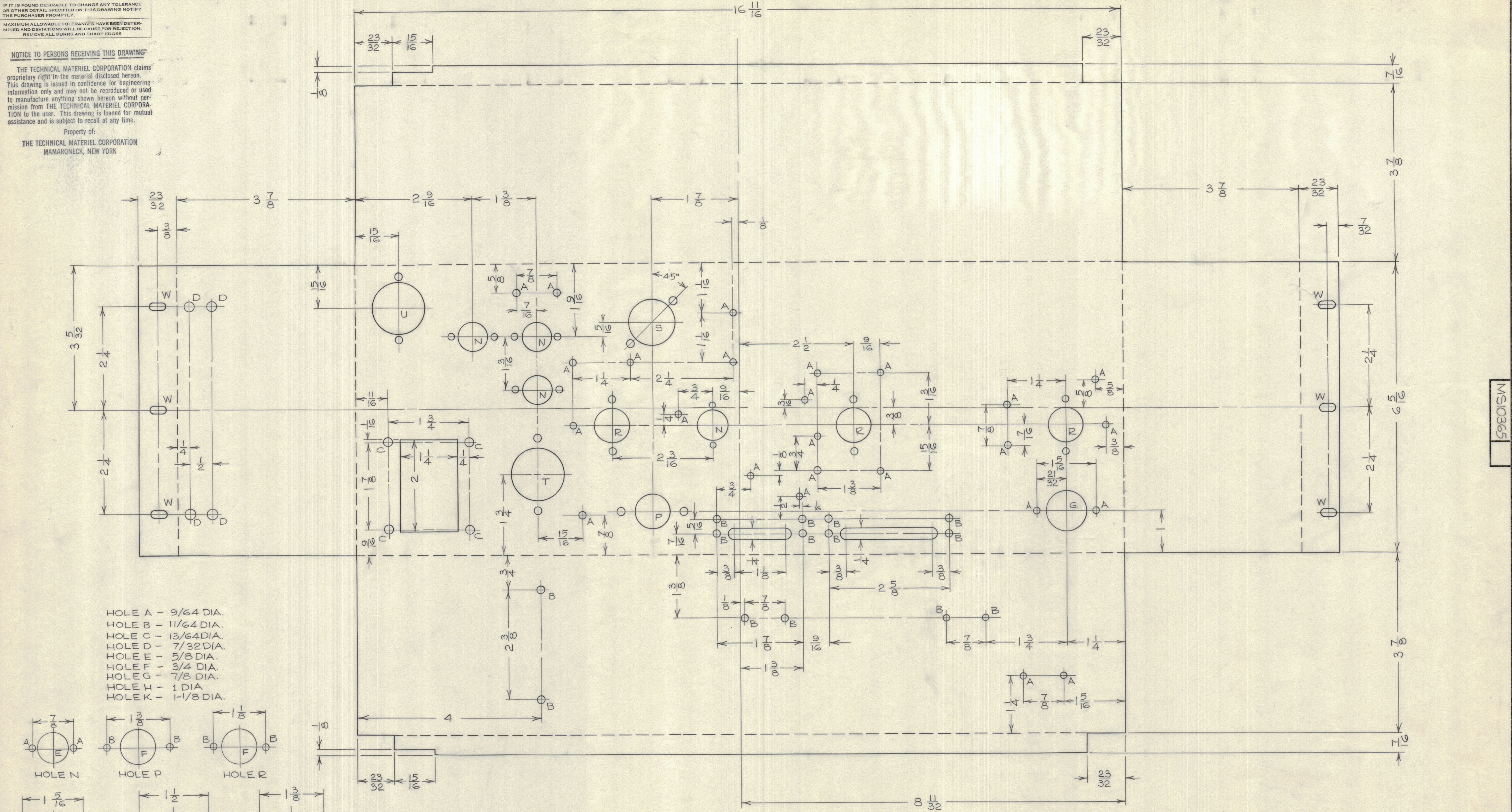


IF IT IS FOUND DESIRABLE TO CHANGE ANY TOLERANCE OR OTHER DETAIL SPECIFIED ON THIS DRAWING NOTIFY THE PURCHASER PROMPTLY.  
 MAXIMUM ALLOWABLE TOLERANCES HAVE BEEN DETERMINED AND DEVIATIONS WILL BE CAUSE FOR REJECTION. REMOVE ALL BURRS AND SHARP EDGES.

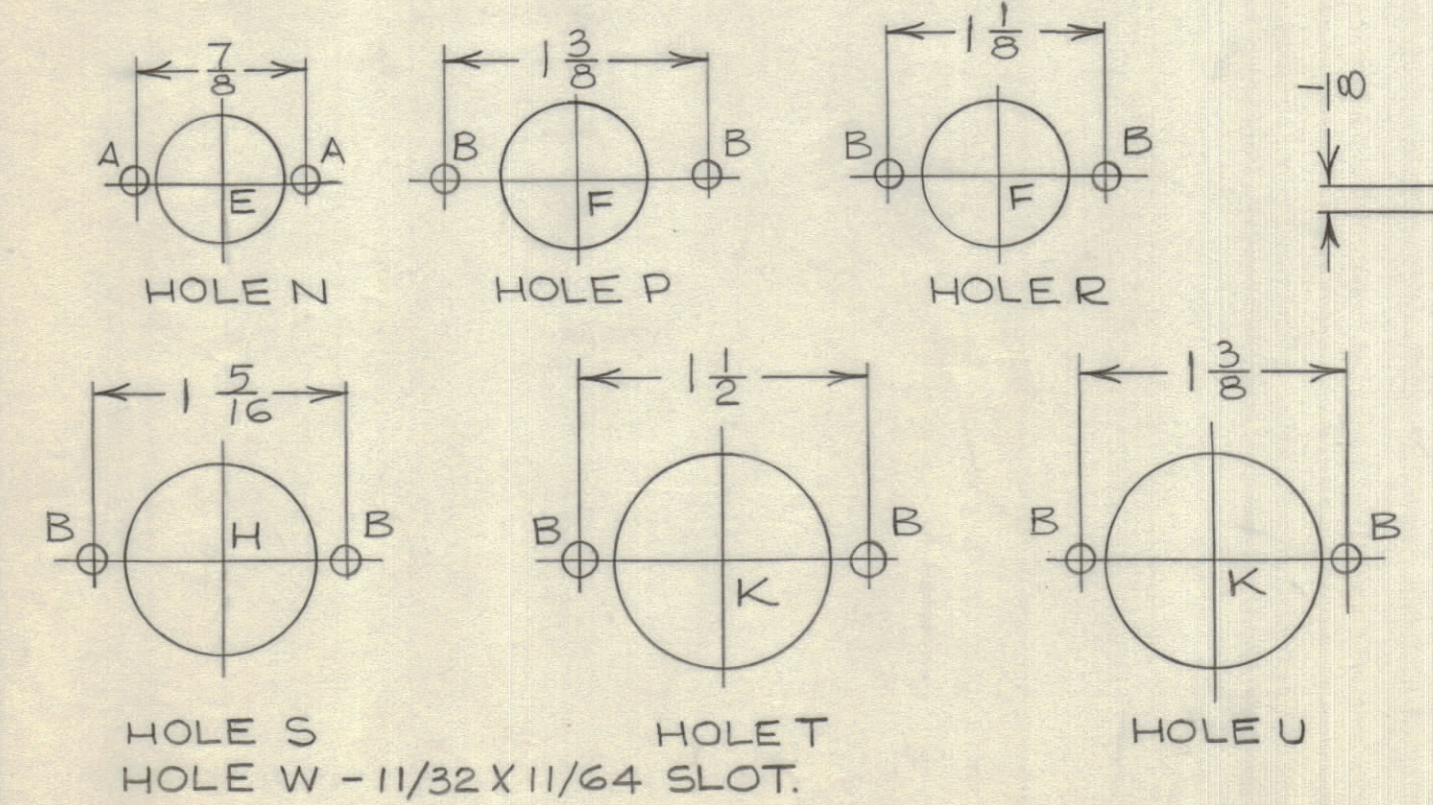
**NOTICE TO PERSONS RECEIVING THIS DRAWING**

THE TECHNICAL MATERIEL CORPORATION claims proprietary right in the material disclosed hereon. This drawing is issued in confidence for engineering information only and may not be reproduced or used to manufacture anything shown hereon without permission from THE TECHNICAL MATERIEL CORPORATION to the user. This drawing is loaned for mutual assistance and is subject to recall at any time.

Property of:  
 THE TECHNICAL MATERIEL CORPORATION  
 MAMARONECK, NEW YORK



- HOLE A - 9/64 DIA.
- HOLE B - 11/64 DIA.
- HOLE C - 13/64 DIA.
- HOLE D - 7/32 DIA.
- HOLE E - 5/8 DIA.
- HOLE F - 3/4 DIA.
- HOLE G - 7/8 DIA.
- HOLE H - 1 DIA.
- HOLE K - 1-1/8 DIA.



BEND UP ON ALL DOTTED LINES.

MS10365

ISSUE	ITEM	CHANGED FROM	DATE	CN. NO.	DRAFTS	CHECKER	ENG. APP.
TOLERANCES							
ALL DEC. DIM. ±		DRILL, PUNCH, COMMERCIAL STOCK					
OTHERS FRAC. DIM. ±		SIZES AND MANUFACTURERS					
		TOLERANCES ARE NOT INCLUDED.					

PCA-1	CE 5010	DEC 12/61
MODEL	PROJECT NO.	DATE

REQ. ITEM	PART NO.	DESCRIPTION	SYMBOL
.064 TK.		TMC (Canada) LIMITED	
STOCK SIZE		OTTAWA ONTARIO	
ALUM.	2 1/2 lbs.	CHASSIS	
MATERIAL	WEIGHT PER PC.	PCA-1	
TYPE & TEMPER		JPC	
DRAWN		ELEC. DES. APP.	MECH. DES. APP.
HEAT TREAT. SPEC.		CHECKED	FINAL APPROVAL
S101 & S404			MS10365
FINISH & SPEC. NO.			