

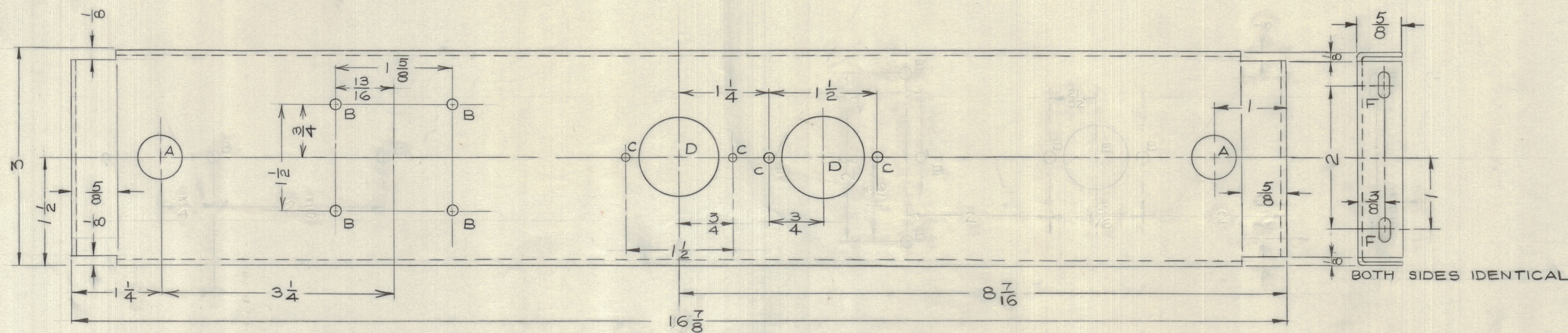
IF IT IS FOUND DESIRABLE TO CHANGE ANY TOLERANCE OR OTHER DETAIL SPECIFIED ON THIS DRAWING NOTIFY THE PURCHASER PROMPTLY.

MAXIMUM ALLOWABLE TOLERANCES HAVE BEEN DETERMINED AND DEVIATIONS WILL BE CAUSE FOR REJECTION. REMOVE ALL BURRS AND SHARP EDGES.

NOTICE TO PERSONS RECEIVING THIS DRAWING

THE TECHNICAL MATERIEL CORPORATION claims proprietary right in the material disclosed hereon. This drawing is issued in confidence for engineering information only and may not be reproduced or used to manufacture anything shown hereon without permission from THE TECHNICAL MATERIEL CORPORATION to the user. This drawing is loaned for mutual assistance and is subject to recall at any time.

Property of:
THE TECHNICAL MATERIEL CORPORATION
MAMARONECK, NEW YORK



HOLE A = 1/2 DIA.
HOLE B = 11/64 DIA.
HOLE C = 9/64 DIA.
HOLE D = 1-1/8 DIA.
HOLE E = 7/8 DIA.
HOLE F = 11/64 X 11/32 SLOT. (4 HOLES)

MS10358

ISSUE	ITEM	CHANGED FROM	DATE	EN. NO.	DRAFTS	CHECKER	ENG. APP.
TOLERANCES							SCALE: NTS
ALL OTHERS	DEC. DIM. ±	1/64	DRILL, PUNCH, COMMERCIAL STOCK SIZES AND MANUFACTURERS TOLERANCES ARE NOT INCLUDED.				

CRCU-1 CE 5004-A SEPT. 11/59
MODEL PROJECT NO. ASS'Y. No. DATE
USED ON

REQ. ITEM	PART NO.	DESCRIPTION	SYMBOL
14GA		TMC (Canada) LIMITED	
ALUM		OTTAWA ONTARIO	
		BARRIER	
		REMOTE CONTROL UNIT	
		JPC	
		ETCH & IRIDITE	
		MS10358	