

IF IT IS FOUND DESIRABLE TO CHANGE ANY TOLERANCE OR OTHER DETAIL SPECIFIED ON THIS DRAWING NOTIFY THE PURCHASER PROMPTLY.

MS10334-A

MAXIMUM ALLOWABLE TOLERANCES HAVE BEEN DETERMINED AND DEVIATIONS WILL BE CAUSE FOR REJECTION. REMOVE ALL BURRS AND SHARP EDGES

USED ON

MODEL

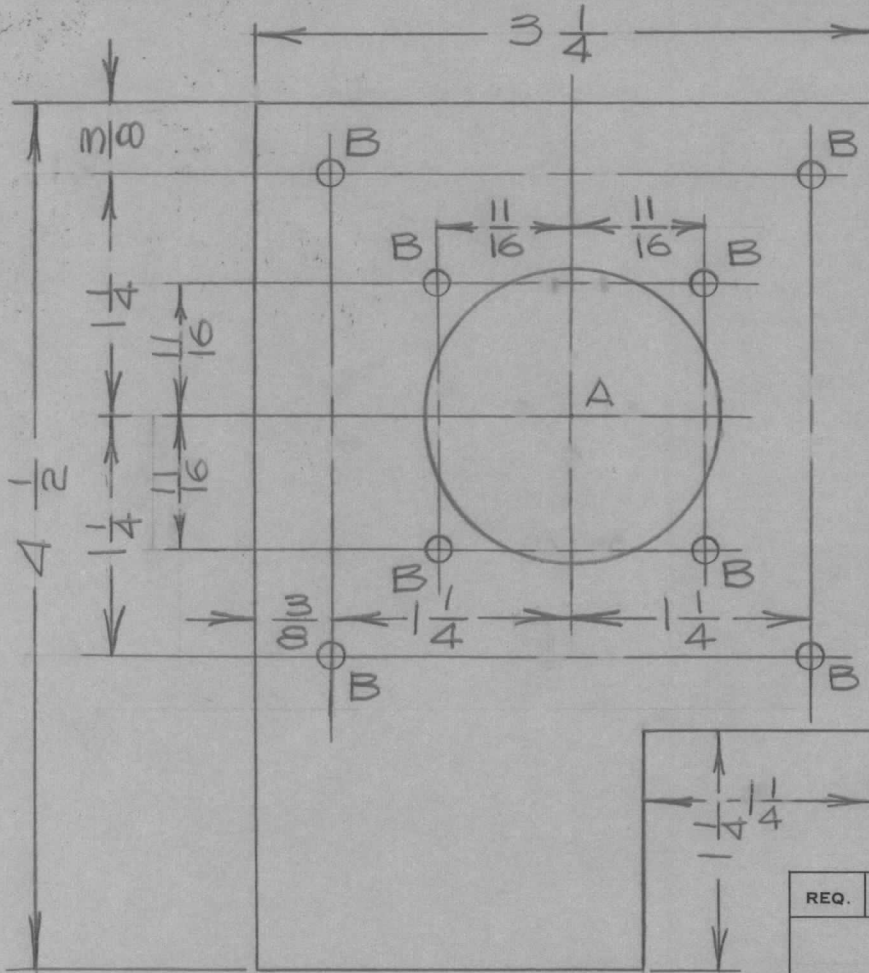
PROJECT NO.

ASS'Y. NO.

DATE

GPT-750 MOD.CAN-1

MAY. 5/60



HOLE A = 1-1/2 DIA.
HOLE B = #28 DRILL.

REQ.	ITEM	PART NO.	DESCRIPTION	SYMBOL			
		14 GA.	TMC (Canada) LIMITED OTTAWA ONTARIO				
		STOCK SIZE					
		ALUM	ADAPTOR PLATE FOR XTAL. OVEN				
		MATERIAL					
		WEIGHT PER PC.					
A		REDRAWN					
		MAY 5/60	JC				
ISSUE	ITEM	CHANGED FROM	DATE	CN. NO.	DRAFTS	CHECKER	ENG. APP.
TOLERANCES			SCALE 1:1				
ALL OTHERS			DIMENSIONS IN INCHES UNLESS OTHERWISE SPECIFIED				
			DRILL, PUNCH, COMMERCIAL STOCK SIZES AND MANUFACTURERS TOLERANCES ARE NOT INCLUDED.				
			TYPE & TEMPER		HEAT TREAT. SPEC.		
			FINISH & SPEC. NO.				
			DRAWN		ELEC. DES. APP.		MECH. DES. APP.
			CHECKED		FINAL APPROVAL		
					MS10334		A

J.P.C.
DRAWN
ELEC. DES. APP.
MECH. DES. APP.
R.W. Thomas