

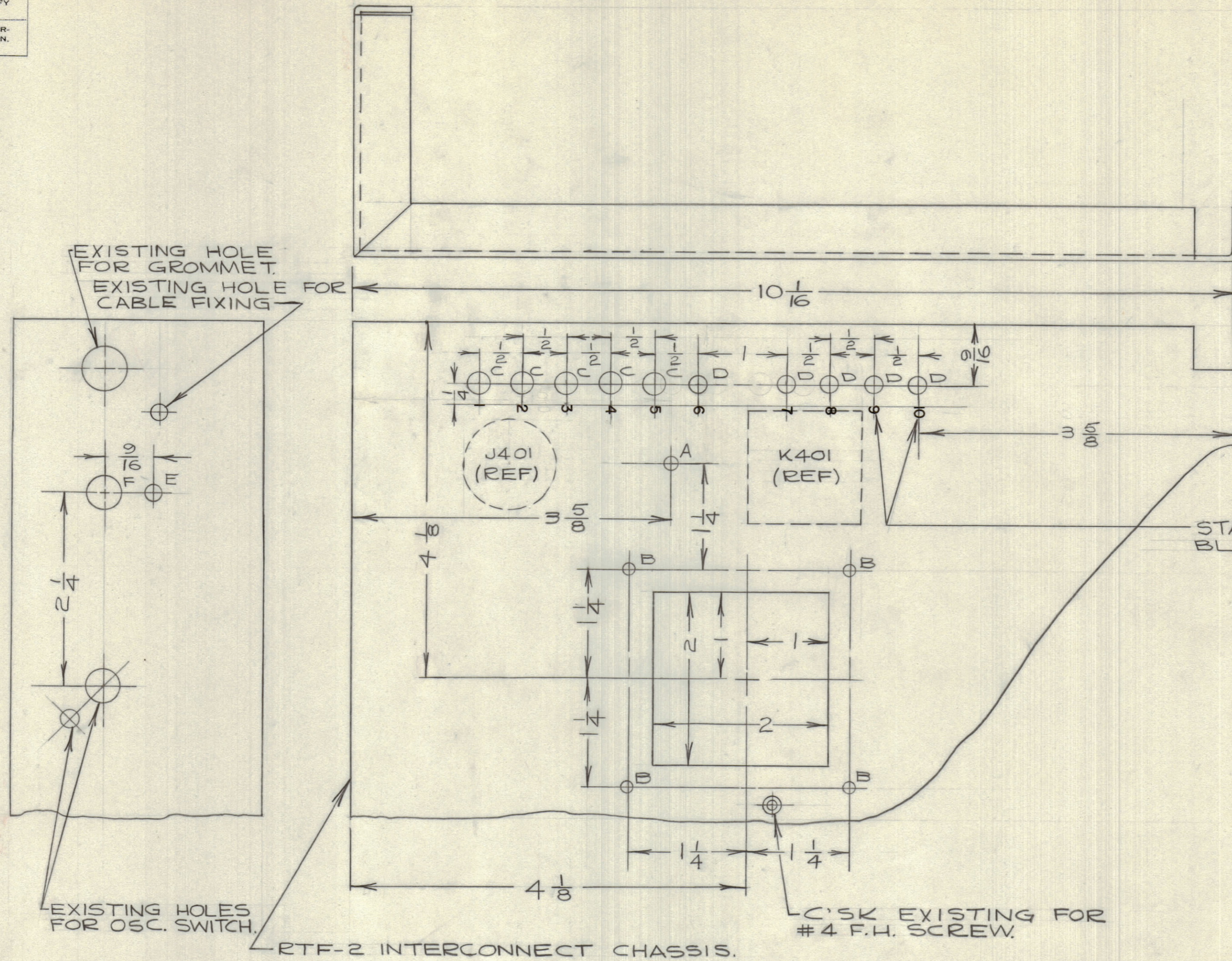
IF IT IS FOUND DESIRABLE TO CHANGE ANY TOLERANCE OR OTHER DETAIL SPECIFIED ON THIS DRAWING NOTIFY THE PURCHASER PROMPTLY.

MAXIMUM ALLOWABLE TOLERANCES HAVE BEEN DETERMINED AND DEVIATIONS WILL BE CAUSE FOR REJECTION. REMOVE ALL BURRS AND SHARP EDGES

NOTICE TO PERSONS RECEIVING THIS DRAWING:

THE TECHNICAL MATERIEL CORPORATION claims proprietary right in the material disclosed herein. This drawing is issued in confidence for engineering information only and may not be reproduced or used to manufacture anything shown herein without permission from THE TECHNICAL MATERIEL CORPORATION to the user. This drawing is loaned for mutual assistance and is subject to recall at any time.

Property of:  
THE TECHNICAL MATERIEL CORPORATION  
MAMARONECK, NEW YORK



- HOLE A = #19 DRILL
- HOLE B = #28 DRILL
- HOLE C = #12 DRILL TO MOUNT TRIMMER CB10003.
- HOLE D = #12 DRILL TO MOUNT TRIMMER CB10004.
- HOLE E = 3/16 DIA.
- HOLE F = 3/8 DIA.

RTF-2 INTERCONNECT CHASSIS.

STAMPING TO BE BLACK & 1/8 HIGH.

MS10324

REF: MS1387 B

REQ. ITEM	PART NO.	DESCRIPTION	SYMBOL
		<b>TMC (Canada) LIMITED</b> OTTAWA ONTARIO	
		MOD. TO RTF-2	
		INTERCONNECT CHAS.	
		JPC	R.W. Thomas
		DRAWN	MECH. DES. APP.
		CHECKED	FINAL APPROVAL
			MS10324

ISSUE	ITEM	CHANGED FROM	DATE	CN. NO.	DRAFTS	CHECKER	ENG. APP.
TOLERANCES							
SCALE: 1:1							
DRILL, PUNCH, COMMERCIAL STOCK SIZES AND MANUFACTURERS TOLERANCES ARE NOT INCLUDED.							

GPT-750 MOD. CAN.-1 MAY 5/60  
MODEL PROJECT NO. ASS'Y. NO. DATE  
USED ON FINISH & SPEC. NO.