

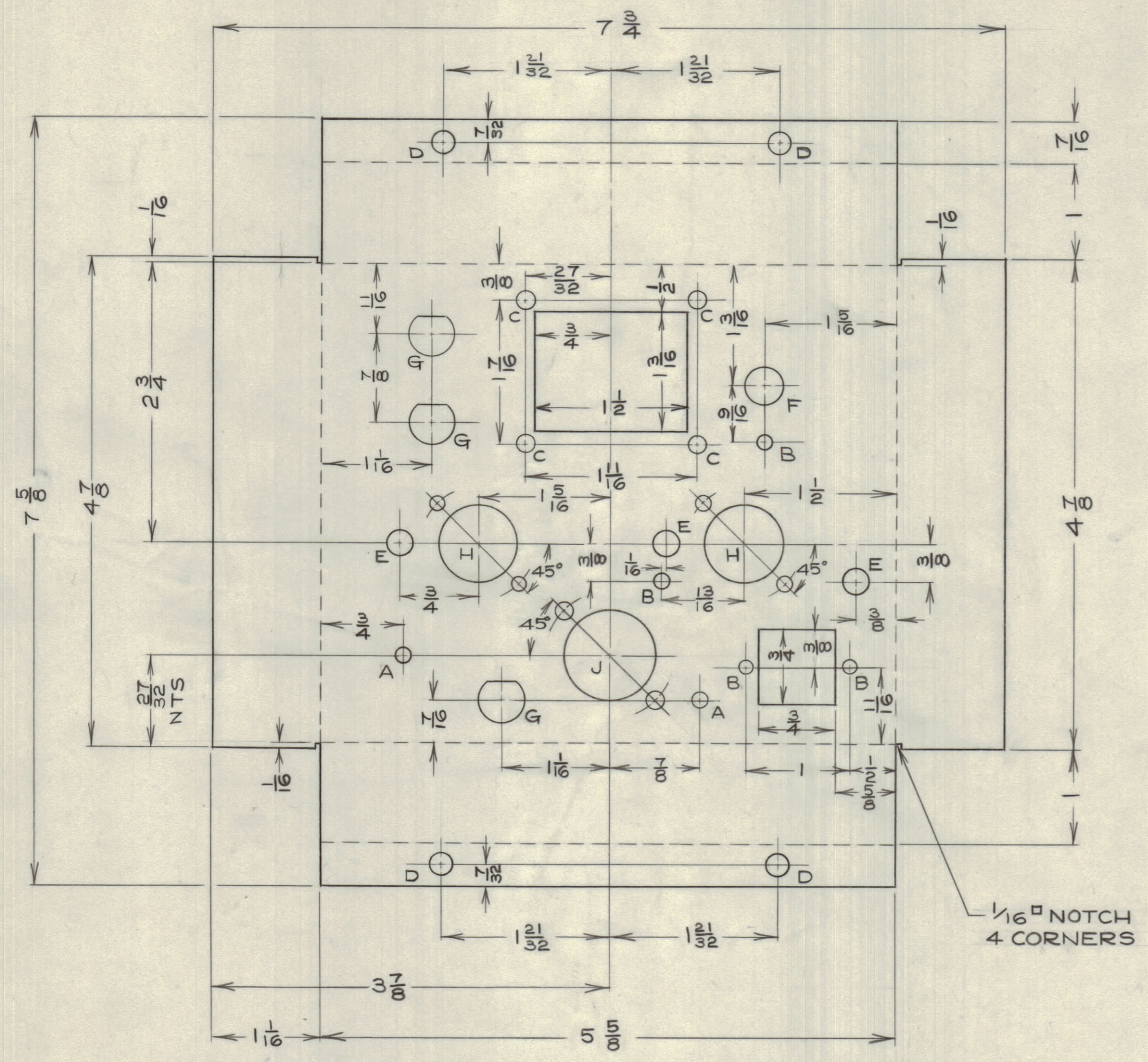
IF IT IS FOUND DESIRABLE TO CHANGE ANY TOLERANCE OR OTHER DETAIL SPECIFIED ON THIS DRAWING NOTIFY THE PURCHASER PROMPTLY.

MAXIMUM ALLOWABLE TOLERANCES HAVE BEEN DETERMINED AND DEVIATIONS WILL BE CAUSE FOR REJECTION. REMOVE ALL BURRS AND SHARP EDGES

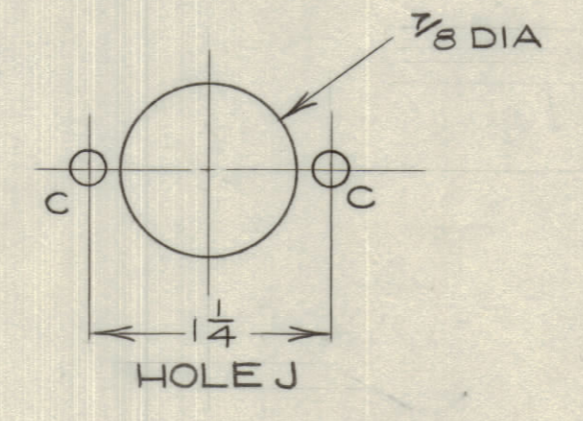
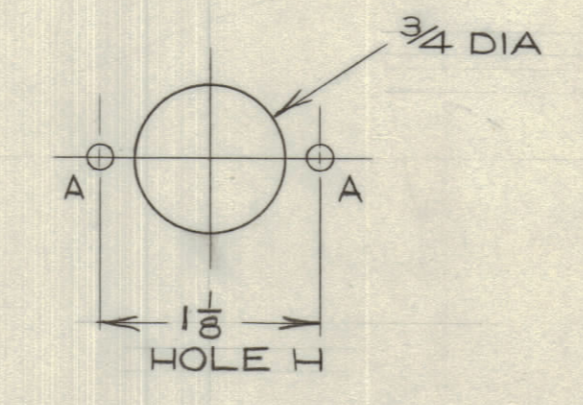
NOTICE TO PERSONS RECEIVING THIS DRAWING

THE TECHNICAL MATERIEL CORPORATION claims proprietary right in the material disclosed hereon. This drawing is issued in confidence for engineering information only and may not be re-produced or used to manufacture anything shown hereon without permission from THE TECHNICAL MATERIEL CORPORATION to the user. This drawing is loaned for mutual assistance and is subject to recall at any time.

Property of:
THE TECHNICAL MATERIEL CORPORATION
MAMARONECK, NEW YORK



- HOLE A - 1/8 DIA
- HOLE B - 9/64 DIA
- HOLE C - 1/16 DIA
- HOLE D - 7/32 DIA
- HOLE E - 1/4 DIA
- HOLE F - 3/8 DIA
- HOLE G - 7/16" DIA HOLE



1/16" NOTCH
4 CORNERS

BEND UP ON ALL BENDLINES

MS10300

ISSUE	ITEM	CHANGED FROM	DATE	CN. NO.	DRAFTS	CHECKER	ENG. APP.
TOLERANCES							
ALL OTHERS				DEC. DIM. ± 1/64			
FRAC. DIM. ± 1/64				ANGULAR DIM. ±			
SCALE: 1 : 1							
DRILL, PUNCH, COMMERCIAL STOCK SIZES AND MANUFACTURERS TOLERANCES ARE NOT INCLUDED.							

AMC6-5 CE646 MAR 3/59

MODEL PROJECT No. ASS'Y. No. DATE

USED ON

REQ.	ITEM	PART No.	DESCRIPTION	SYMBOL
1	1		CHASSIS	
7 3/4 X 7 5/8			TMC (Canada) LIMITED	
STOCK SIZE			OTTAWA ONTARIO	
14GA ALUM			CHASSIS-FRONT END	
MATERIAL			WEIGHT PER PC.	
TYPE & TEMPER			DCM	
DRAWN			ELEC. DES. APP.	
HEAT TREAT. SPEC.			MECH. DES. APP.	
ETCH + IRIDITE			CHECKED	
FINISH & SPEC. No.			FINAL APPROVAL	
				MS10300