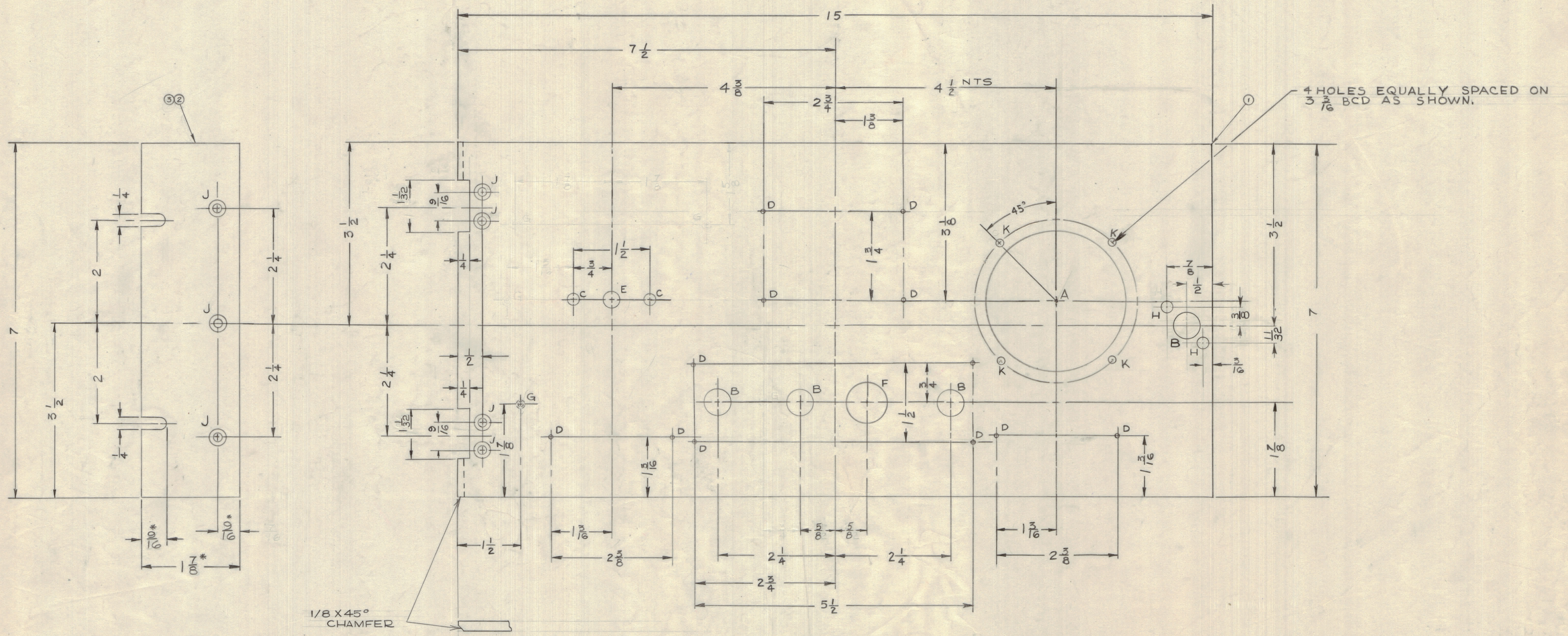


IF IT IS FOUND DESIRABLE TO CHANGE ANY TOLERANCE OR OTHER DETAIL SPECIFIED ON THIS DRAWING NOTIFY THE PURCHASER PROMPTLY.
 MAXIMUM ALLOWABLE TOLERANCES HAVE BEEN DETERMINED AND DEVIATIONS WILL BE CAUSE FOR REJECTION. REMOVE ALL BURRS AND SHARP EDGES

NOTICE TO PERSONS RECEIVING THIS DRAWING
 THE TECHNICAL MATERIEL CORPORATION claims proprietary right in the material disclosed herein. This drawing is issued in confidence for engineering information only and may not be reproduced or used to manufacture anything shown hereon without permission from THE TECHNICAL MATERIEL CORPORATION to the user. This drawing is loaned for mutual assistance and is subject to recall at any time.
 Property of:
 THE TECHNICAL MATERIEL CORPORATION
 MAMARONECK, NEW YORK



- HOLE A - 2 $\frac{13}{16}$ DIA - 1 REQ'D
- HOLE B - $\frac{1}{2}$ DIA - 4 REQ'D
- HOLE C - #19 DRILL - 2 REQ'D
- HOLE D - #49 DRILL - 12 REQ'D
- HOLE E - $\frac{5}{16}$ DIA - 1 REQ'D
- HOLE F - $\frac{11}{16}$ DIA - 1 REQ'D
- HOLE G - DRILL & TAP 6-32 x $\frac{1}{8}$ DEEP FROM BACK - 5 REQ'D
- HOLE H - FORCE FIT FOR $\frac{1}{8}$ O.D. ROD FROM BACK - 2 REQ'D
- HOLE J - #19 DRILL & CSK FOR #8 F.H. SCREW - 10
- HOLE K - #28 DRILL - 4 HOLES

B	* 1 3/8 WAS 1 1/2 * 9/16 WAS 1 1/32 4" HOLES DELETED	DEC 27 1961	JPC	<i>[Signature]</i>			
A	HOLE K ADDED. HOLE C WAS #28 DRILL - 5 REQ.	AUG 5 1959	JPC	<i>[Signature]</i>			
ISSUE	ITEM	CHANGED FROM	DATE	CH. NO.	DRAFTS	CHECKER	ENG. APP.
TOLERANCES		SCALE:					
ALL OTHERS	DEC. DIM. ± FRAC. DIM. ± ANGULAR DIM. ±	DRILL, PUNCH, COMMERCIAL STOCK SIZES AND MANUFACTURERS TOLERANCES ARE NOT INCLUDED.					

REF:MS-157-4-S-UP PANEL

1/3	R.H. SECTION		
1/2	L.H. SECTION		
1/1	CENTRE SECTION		
REQ. ITEM	PART NO.	DESCRIPTION	SYMBOL
STANDARD PANEL MS 157-4-S-UP		TMC (Canada) LIMITED OTTAWA ONTARIO	
MATERIAL		PCA	
TYPE & TEMPER		J.P.C.	<i>[Signature]</i>
HEAT TREAT. SPEC.		S101, S404, S114 & S115	
FINISH & SPEC. NO.		MS10272 B	

PCA. AUG. 5/59
 MODEL PROJECT NO. ASS'Y. NO. DATE
 USED ON

B MS10272