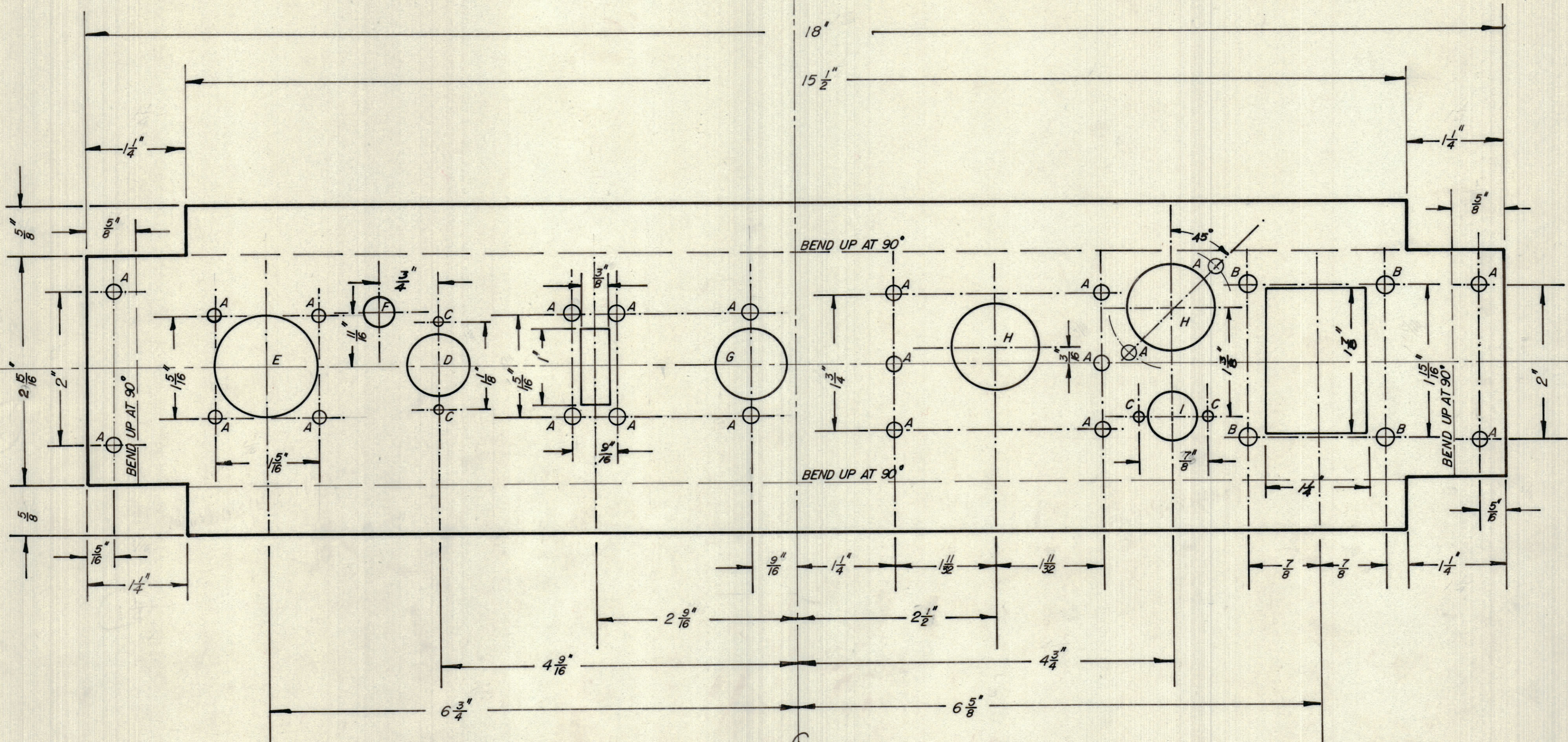


IF IT IS FOUND DESIRABLE TO CHANGE ANY TOLERANCE OR OTHER DETAIL SPECIFIED ON THIS DRAWING NOTIFY THE PURCHASER PROMPTLY.

MAXIMUM ALLOWABLE TOLERANCES HAVE BEEN DETERMINED AND DEVIATIONS WILL BE CAUSE FOR REJECTION. REMOVE ALL BURRS AND SHARP EDGES

NOTICE TO PERSONS RECEIVING THIS DRAWING
 THE TECHNICAL MATERIEL CORPORATION claims proprietary right in the material disclosed hereon. This drawing is issued in confidence for engineering information only and may not be reproduced or used to manufacture anything shown hereon without permission from THE TECHNICAL MATERIEL CORPORATION to the user. This drawing is loaned for mutual assistance and is subject to recall at any time.

Property of:
 THE TECHNICAL MATERIEL CORPORATION
 MAMARONECK, NEW YORK



22	A	HOLE 3/16" DIA.
4	B	" 7/32" "
4	C	" 1/8" "
1	D	" 3/4" "
1	E	" 1-5/16" "
1	F	" 3/8" "
1	G	" 7/8" "
2	H	" 1-1/8" "
1	I	" 5/8" "
R. IT.	PART NO.	DESCRIPTION

ISSUE	ITEM	CHANGED FROM	DATE	CN. NO.	DRAFTS	CHECKER	ENG. APP.
TOLERANCES		SCALE:					
ALL OTHERS	DEC. DIM. ±	DRILL, PUNCH, COMMERCIAL STOCK SIZES AND MANUFACTURERS TOLERANCES ARE NOT INCLUDED.					
	FRAC. DIM. ±						
	ANGULAR DIM. ±						

VCT. MODEL PROJECT NO. ASS'Y. No. DATE *Jan. 30. 58*

REQ. ITEM	PART No.	DESCRIPTION	SYMBOL
064THK. FILUM 16 x 4 3/16 x 16 GA		TMC (Canada) LIMITED OTTAWA ONTARIO	
FILUM. 16 GA		BARRIER FOR VCT. PART OF TIS SYSTEM.	
MATERIAL	WEIGHT PER PC.	Drawn: <i>M. DeL...</i> Checked: <i>DCM</i>	ELEC. DES. APP. <i>H. Krauer</i> MECH. DES. APP. <i>[Signature]</i>
TYPE & TEMPER		FINAL APPROVAL	
HEAT TREAT. SPEC.		MS-10 253	
FINISH & SPEC. No.			