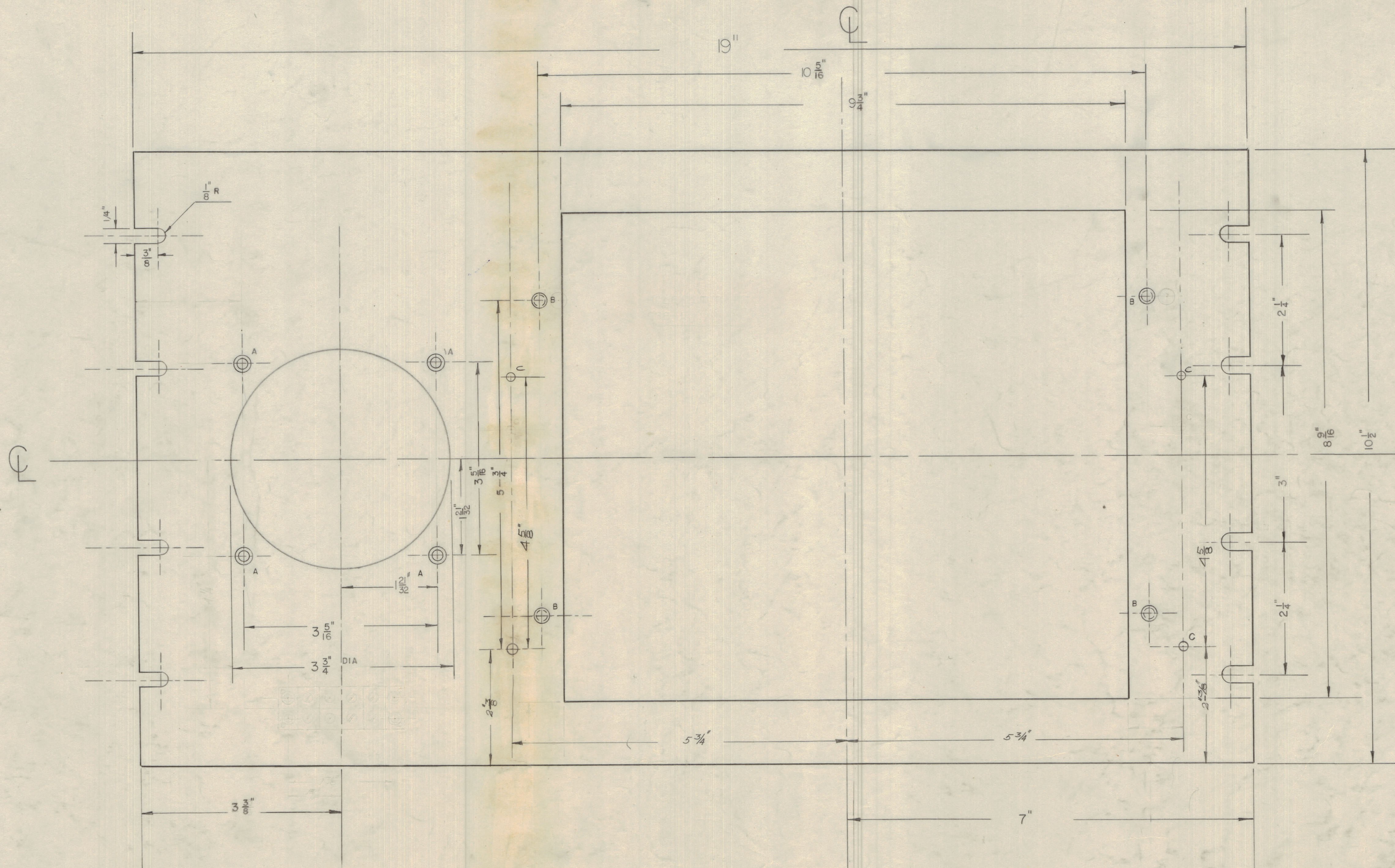


IF IT IS FOUND DESIRABLE TO CHANGE ANY TOLERANCE OR OTHER DETAIL SPECIFIED ON THIS DRAWING NOTIFY THE PURCHASER PROMPTLY.
 MAXIMUM ALLOWABLE TOLERANCES HAVE BEEN DETERMINED AND DEVIATIONS WILL BE CAUSE FOR REJECTION. REMOVE ALL BURRS AND SHARP EDGES.

NOTICE TO PERSONS RECEIVING THIS DRAWING
 THE TECHNICAL MATERIEL CORPORATION claims proprietary right in the material disclosed hereon. This drawing is issued in confidence for engineering information only and may not be reproduced or used to manufacture anything shown hereon without permission from THE TECHNICAL MATERIEL CORPORATION to the user. This drawing is loaned for mutual assistance and is subject to recall at any time.
 Property of:
 THE TECHNICAL MATERIEL CORPORATION
 MAMARONECK, NEW YORK



FOR INFORMATION ON TERMINAL BOARD MOUNTING BRACKET FOR LOUDSPEAKER SEE DRNG. NO. MS-10217 SIZE -4.

MS-10208

ISSUE	ITEM	CHANGED FROM	DATE	DN. NO.	DRAFTS	CHECKER	ENG. APP.
TOLERANCES							
SCALE:							
DRILL, PUNCH, COMMERCIAL STOCK SIZES AND MANUFACTURERS TOLERANCES ARE NOT INCLUDED.							

MODEL: GSB-1 PROJECT NO. ASS'Y. No. DATE: 10.4.58 USED ON

4	D	4 HOLES C.S. FOR 6-32	
4	C	4 HOLES 4 REG'D DRILL NO 19	
4	B	4 HOLES DRILL 10-32	
4	A	4 " C.S. FOR 8-32	
REQ. ITEM	PART No.	DESCRIPTION	SYMBOL
TMC (Canada) LIMITED OTTAWA ONTARIO			
GSB-1 AND SPEAKER PANEL			
MATERIAL		WEIGHT PER PC	
TYPE & TEMPER			
DRAWN		ELEC. DES. APP.	MECH. DES. APP.
HEAT TREAT. SPEC.		CHECKED	
FINAL APPROVAL			
MS-10208			