

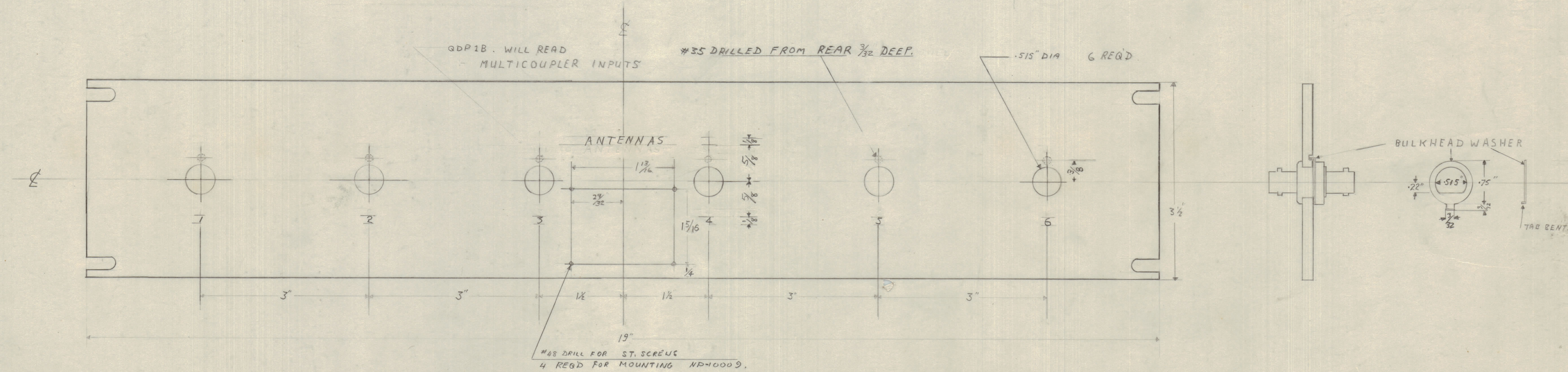
IF IT IS FOUND DESIRABLE TO CHANGE ANY TOLERANCE OR OTHER DETAIL SPECIFIED ON THIS DRAWING NOTIFY THE PURCHASER PROMPTLY.
 MAXIMUM ALLOWABLE TOLERANCES HAVE BEEN DETERMINED AND DEVIATIONS WILL BE CAUSE FOR REJECTION. REMOVE ALL BURRS AND SHARP EDGES

NOTICE TO PERSONS RECEIVING THIS DRAWING

THE TECHNICAL MATERIEL CORPORATION claims proprietary right in the material disclosed herein. This drawing is issued in confidence for engineering information only and may not be reproduced or used to manufacture anything shown hereon without permission from THE TECHNICAL MATERIEL CORPORATION to the user. This drawing is loaned for material assistance and is subject to recall at any time.

Property of:
 THE TECHNICAL MATERIEL CORPORATION
 MAMARONECK, NEW YORK

MS-10192



REVISION	DATE	BY	CHKD	APP'D
A 1				
SUPERSEDES DRAWGS. B-10088 - G-10089				
ISSUE	ITEM	CHANGED FROM	DATE	CN. NO. DRAFTS
TOLERANCES				
SCALE: FULL				
ALL DEC. DIM. ±		DRILL, PUNCH, COMMERCIAL STOCK		
OTHERS PRAC. DIM. ±		SIZES AND MANUFACTURERS		
		TOLERANCES ARE NOT INCLUDED.		

MODEL	PROJECT NO.	ASSY. NO.	DATE
GDP 1C	TE-539		20/3/57
USED ON			

REQ. ITEM	PART NO.	DESCRIPTION	SYMBOL
3/16 SHEET.		TMC(Canada)LIMITED	
STOCK SIZE		OTTAWA ONTARIO	
ALUMINUM		PATCHING PANEL	
MATERIAL WEIGHT PER PC.		MACHINING + ENGRAVING DETAILS.	
575 1/2 HARD.		T. Hayes	
TYPE & TEMPER		DRAWN	ELEC. DES. APP.
HEAT TREAT. SPEC.		CHECKED	MECH. DES. APP.
FINISH & SPEC. NO.		M. Y. 10/60	
		FINAL APPROVAL	
		MS-10192	