

IF IT IS FOUND DESIRABLE TO CHANGE ANY TOLERANCE OR OTHER DETAIL SPECIFIED ON THIS DRAWING NOTIFY THE PURCHASER PROMPTLY.

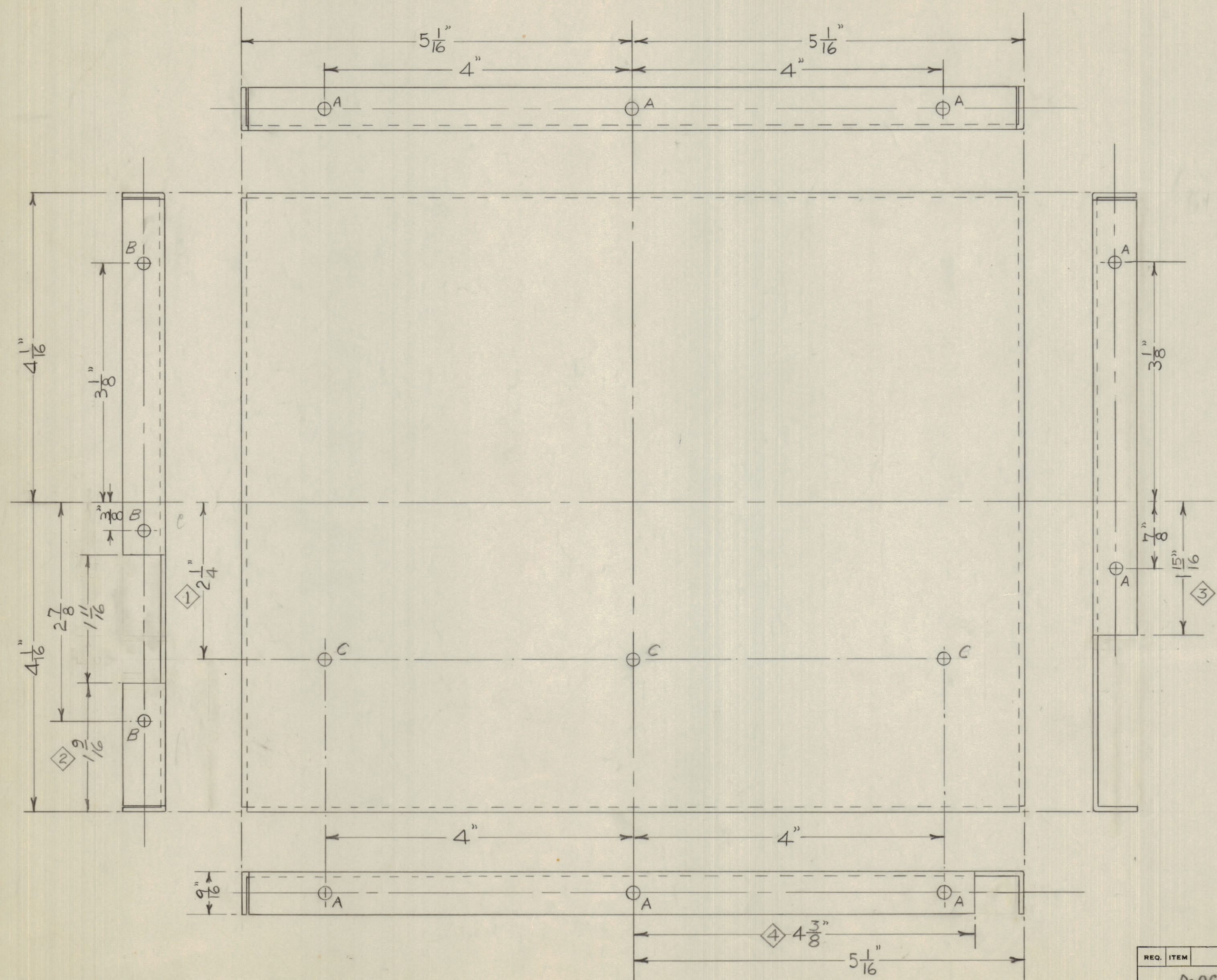
MAXIMUM ALLOWABLE TOLERANCES HAVE BEEN DETERMINED AND DEVIATIONS WILL BE CAUSE FOR REJECTION. REMOVE ALL BURRS AND SHARP EDGES

**NOTICE TO PERSONS RECEIVING THIS DRAWING**

THE TECHNICAL MATERIEL CORPORATION claims proprietary right in the material disclosed hereon. This drawing is issued in confidence for engineering information only and may not be reproduced or used to manufacture anything shown hereon without permission from THE TECHNICAL MATERIEL CORPORATION to the user. This drawing is loaned for mutual assistance and is subject to recall at any time.

Property of:  
THE TECHNICAL MATERIEL CORPORATION  
MAMARONECK, NEW YORK

14 #27 DRILL HOLES  
A- 1/4 PUNCH 8 HOLES  
B- 3/16 PUNCH 3 HOLES  
C- 3/64 PUNCH 3 HOLES



MS-10120 A

4	4 3/8 WAS 4 7/16	17/2/56	L.M.	Waa		
3	1 13/16 WAS 1 3/4					
2	1 9/16 WAS 1 1/4					
1	2 1/4 WAS 2 1/16					
ISSUE	ITEM	CHANGED FROM	DATE	CN. NO. DRAFTS	CHECKER	ENG. APP.
TOLERANCES		SCALE: N.T.S.				
ALL OTHERS	DEC. DIM. ±	DRILL, PUNCH, COMMERCIAL STOCK SIZES AND MANUFACTURERS TOLERANCES ARE NOT INCLUDED.				
	FRAC. DIM. ±					
	ANGULAR DIM. ±					

MODEL	PROJECT NO.	ASS'Y. NO.	DATE
	A-10063		29/7/55
USED ON			

REQ. ITEM	PART NO.	DESCRIPTION	SYMBOL
	D-064	TMC (Canada) LIMITED	
	STOCK SIZE	OTTAWA ONTARIO	
MATERIAL	WEIGHT PER PC.	END COVER (R.H.)	
		TRMTR. RF SWITCHING UNIT	
TYPE & TEMPER		E. Champ	
		DRAWN	ELEC. DES. APP.
			MECH. DES. APP.
HEAT TREAT. SPEC.		Waa	
		CHECKED	FINAL APPROVAL
FINISH & SPEC. NO.			
			MS-10120 A