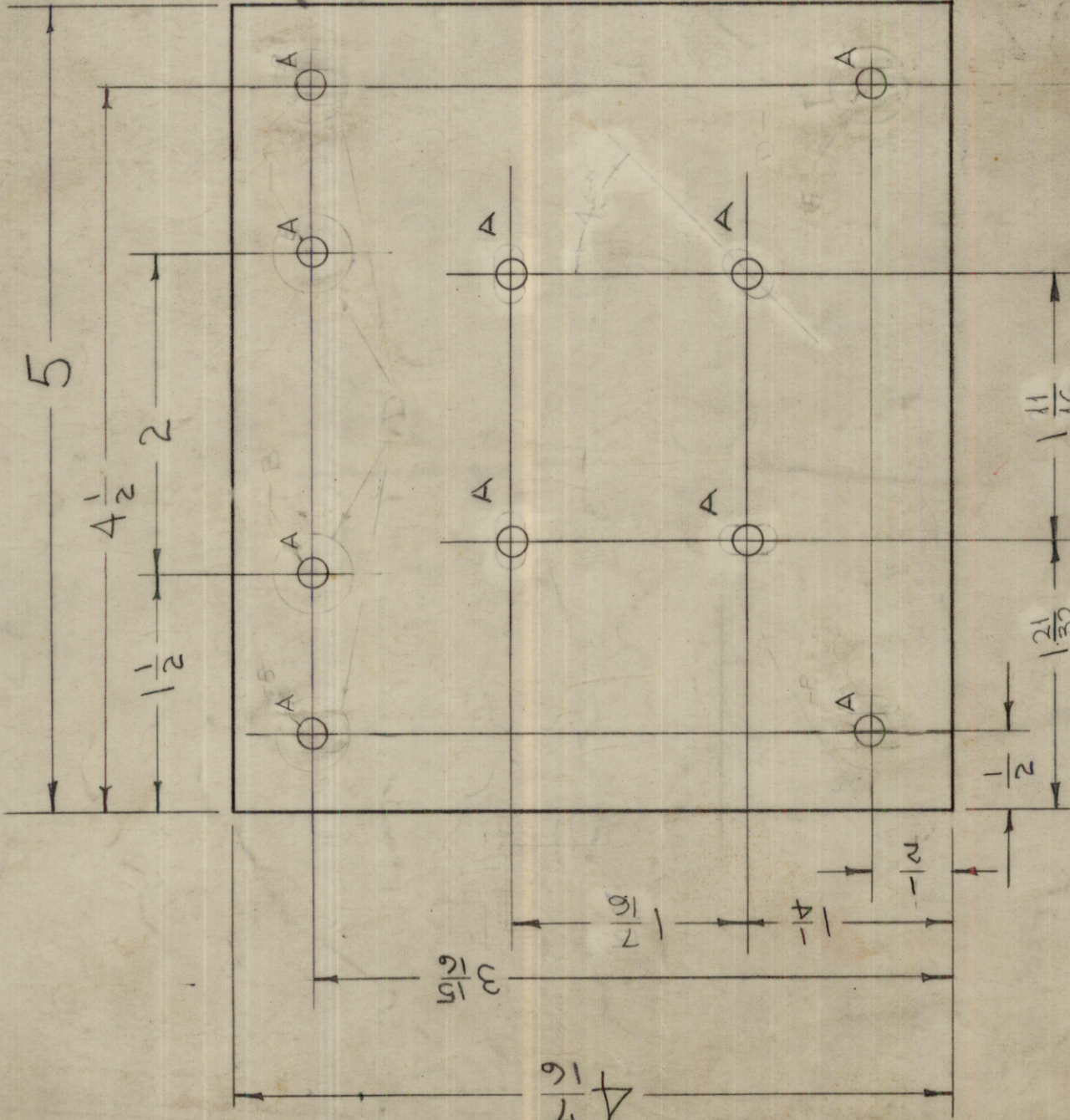


IF IT IS FOUND DESIRABLE TO CHANGE ANY TOLERANCE OR OTHER DETAIL SPECIFIED ON THIS DRAWING NOTIFY THE PURCHASER PROMPTLY.

MAXIMUM ALLOWABLE TOLERANCES HAVE BEEN DETERMINED AND DEVIATIONS WILL BE CAUSE FOR REJECTION. REMOVE ALL BURRS AND SHARP EDGES



ISSUE	ITEM	CHANGED FROM	DATE	CN. NO.	DRAFTS	CHECKER	ENG. APP.	SCALE:
H	1	"A" SLOTS WERE 1/16 X 1/32	9/25/56					
G	1	RAC-TA WAS RACT S-107 ADDED	7/16/56					
F	2	S-114, S-115 DELETED C'BORE ON 'B' HOLES DELETED	2-20-56					
E	1	'D' HOLES WERE 3/8"	12/21/55					
D	2	'B' HOLES WERE 2 RER.	9/27/54					
C	1	"A" SLOTS DELETED "A" HOLES CHGD. DRAWN	8/20/53					

DRILL, PUNCH, COMMERCIAL STOCK SIZES AND MANUFACTURERS TOLERANCES ARE NOT INCLUDED.

DEC. DIM. ±
FRAC. DIM. ±
ANGULAR DIM. ±

MS-100 L

A - 3/16 (.187) D. 10-HOLES REQ.
B - 1/8 (.125) D. 10-HOLES REQ.
C - 1/16 (.062) D. 10-HOLES REQ.
D - 1/32 (.031) D. 10-HOLES REQ.

NOTICE TO PERSONS RECEIVING THIS DRAWING

THE TECHNICAL MATERIEL CORPORATION claims proprietary right in the material disclosed hereon. This drawing is issued in confidence for engineering information only and may not be reproduced or used to manufacture anything shown hereon without permission from THE TECHNICAL MATERIEL CORPORATION to the user. This drawing is loaned for mutual assistance and is subject to recall at any time.

Property of:
THE TECHNICAL MATERIEL CORPORATION
MAMARONECK, NEW YORK

NOTE - FINISH (ONLY) UNLESS OTHERWISE SPECIFIED IS 125 GRIT SAND BLASTED TO A 15 MICRO INCH FINISH.

REQ. ITEM	PART NO.	DESCRIPTION	SYMBOL
.064		THE TECHNICAL MATERIEL CORP. MAMARONECK, NEW YORK	
ALUMINUM	II	MOUNTING PLATE	
MATERIAL	WEIGHT PER PC.		
52S-H32			
TYPE & TEMPER			
II			
HEAT TREAT. SPEC.			
S404 YELLOW IRIDITE			
FINISH & SPEC. NO.			

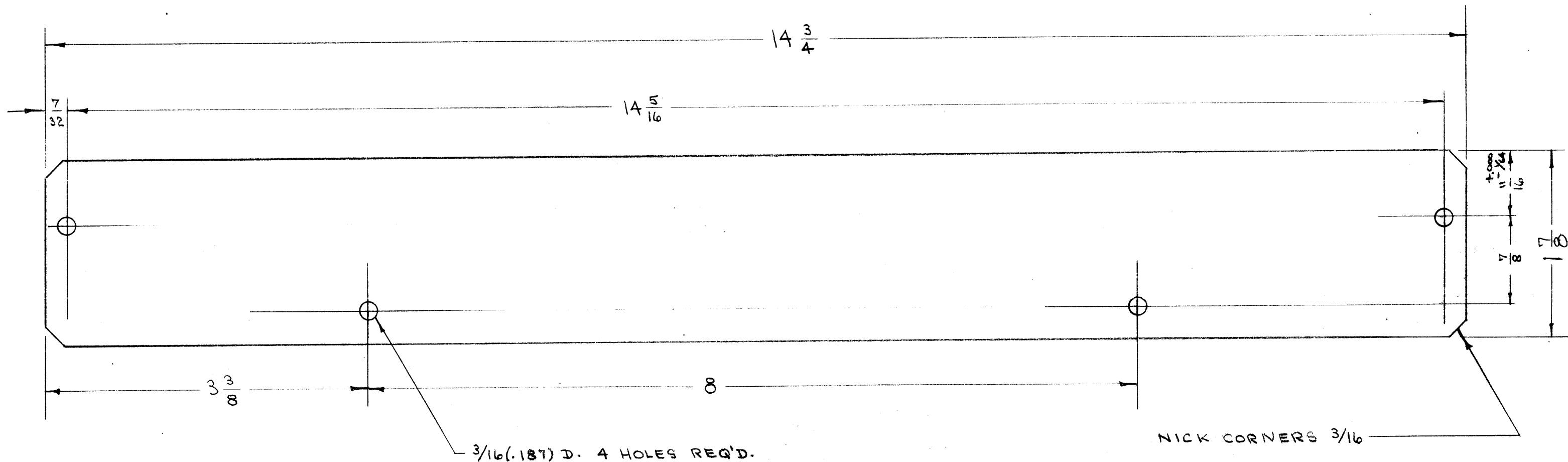
ISSUE	ITEM	DATE	CN. NO.	DRAFTS	CHECKER	ENG. APP.	SCALE:
H	1	10-13-57					
G	1	10-30-56					
F	2	3-14-56					
E	1	12-2-55					
D	2	9-15-53					
C	1	10-17-52					
B	1	6-5-52					

PROJECT NO. 112
MODEL RAC
ASSY. NO. A-105
DATE 6-5-52

IF IT IS FOUND DESIRABLE TO CHANGE ANY TOLERANCE OR OTHER DETAIL SPECIFIED ON THIS DRAWING NOTIFY THE PURCHASER PROMPTLY.

MAXIMUM ALLOWABLE TOLERANCES HAVE BEEN DETERMINED AND DEVIATIONS WILL BE CAUSE FOR REJECTION. REMOVE ALL BURRS AND SHARP EDGES

MS-102 C



3/16 (.187) D. 4 HOLES REQ'D.

NICK CORNERS 3/16

NOTICE TO PERSONS RECEIVING THIS DRAWING

THE TECHNICAL MATERIEL CORPORATION claims proprietary right in the material disclosed hereon. This drawing is issued in confidence for engineering information only and may not be reproduced or used to manufacture anything shown hereon without permission from THE TECHNICAL MATERIEL CORPORATION to the user. This drawing is loaned for mutual assistance and is subject to recall at any time.

Property of:

**THE TECHNICAL MATERIEL CORPORATION
MAMARONECK, NEW YORK**

C	1	S-404 WAS S-101	12/10/59	1001	AS	EMN	
B	1	BFP-1 REMOVED	8-31-54	2	C.D.D.	EMN	
A	1	REDRAWN - NO REVISION	2-25-53	1	C.D.D.	EMN	
ISSUE	ITEM	CHANGED FROM	DATE	CN. NO.	DRAFTS	CHECKER	ENG. APP.
TOLERANCES		SCALE: $\frac{1}{16}$					
ALL OTHERS	DEC. DIM. \pm FRAC. DIM. \pm $\frac{1}{64}$ AN ULAR DIM. \pm		DRILL, PUNCH, COMMERCIAL STOCK SIZES AND MANUFACTURERS TOLERANCES ARE NOT INCLUDED.				

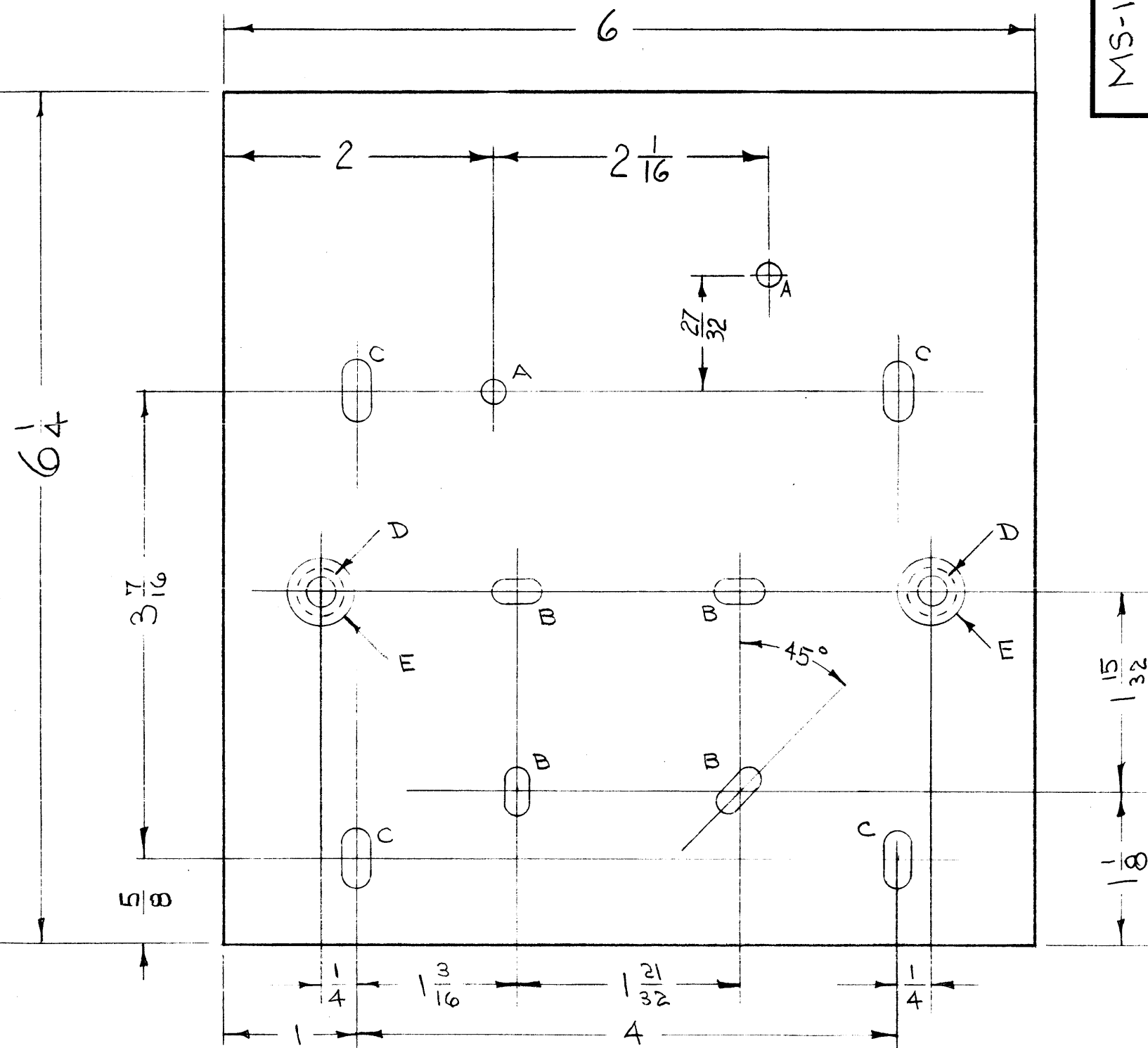
SFP-2	121	A-449	4-16-53
SPI-1	121	A-445	2-25-53
MODEL	PROJECT NO.	ASS'Y. NO.	DATE
USED ON			

REQ.	ITEM	PART NO.	DESCRIPTION	SYMBOL
		.051	THE TECHNICAL MATERIEL CORP. MAMARONECK, NEW YORK	
		ALUMINUM	COVER, DUST	
		52S - H32	C.D.D. 2-25-53	A. J. J.
		HEAT TREAT. SPEC.	MECH. DES. APP.	
		S-404 YELLOW IRIDITE	FINAL APPROVAL	
		FINISH & SPEC. NO.	MS-102	C

IF IT IS FOUND DESIRABLE TO CHANGE ANY TOLERANCE OR OTHER DETAIL SPECIFIED ON THIS DRAWING NOTIFY THE PURCHASER PROMPTLY.

MAXIMUM ALLOWABLE TOLERANCES HAVE BEEN DETERMINED AND DEVIATIONS WILL BE CAUSE FOR REJECTION. REMOVE ALL BURRS AND SHARP EDGES

MS-104 C



- A- 1/64 (.172) D. 2 HOLES REQ.
- B- 1/64 X 1/32 SLOT 4 SLOTS REQ.
- C- 13/64 X 13/32 SLOT 4 SLOTS REQ.
- D- DRILL & C'SINK (FROM REVERSE SIDE) FOR 8-32 FLAT HEAD SCREW. 2 HOLES REQ.
- E- 1/2 (.500) D. C'BORE SLIGHTLY (TOP SIDE) TO REMOVE PAINT.

NOTICE TO PERSONS RECEIVING THIS DRAWING

THE TECHNICAL MATERIEL CORPORATION claims proprietary right in the material disclosed hereon. This drawing is issued in confidence for engineering information only and may not be reproduced or used to manufacture anything shown hereon without permission from THE TECHNICAL MATERIEL CORPORATION to the user. This drawing is loaned for mutual assistance and is subject to recall at any time.

Property of:

THE TECHNICAL MATERIEL CORPORATION
MAMARONECK, NEW YORK

- NOTE - FINISH -
- S-404 YELLOW IRIDITE
 - S-114 ZINC CHROMATE PRIMER
 - S-115 SMOOTH GREY ENAMEL

C	2	ONE 1/4" HOLE DELETED & ONE RELOCATED	11-A-60	3389	WJ	MD	RE
B	1	2 1/16 DIM WAS 2	12/10/54	1001	HO	MD	EMN
A	1	REDRAWN W/CHANGES	8-21-53	1	C.D.D.	MD	MD
ISSUE	ITEM	CHANGED FROM	DATE	CN. NO.	DRAFTS	CHECKER	ENG. APP.

TOLERANCES		SCALE: 1" = 1"
ALL OTHERS	DEC. DIM. ± 1/64 FRAC. DIM. ± ANGULAR DIM. ±	DRILL, PUNCH, COMMERCIAL STOCK SIZES AND MANUFACTURERS TOLERANCES ARE NOT INCLUDED.

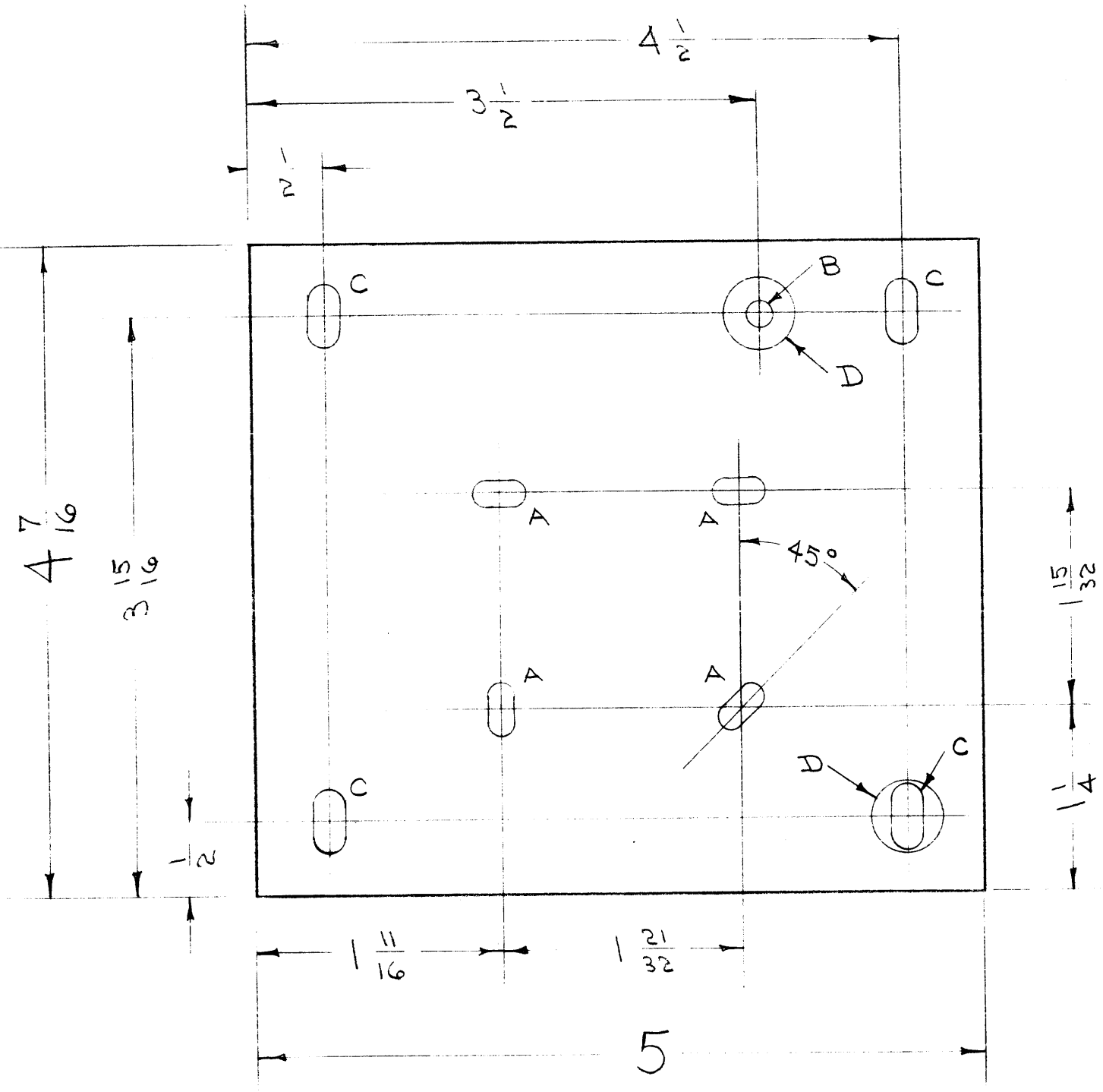
BAC-1-S-20	108	A-110	7-15-52
MODEL	PROJECT NO.	ASSY. NO.	DATE
USED ON			

REQ.	ITEM	PART NO.	DESCRIPTION	SYMBOL
		.081	THE TECHNICAL MATERIEL CORP. MAMARONECK, NEW YORK	
		ALUMINUM	MOUNTING PLATE	
		52S H32	C.D.D. 8-21-53	
		SEE NOTE	DRAWN: MD CHECKED: MD FINAL APPROVAL: MD	
				MS-104 C

IF IT IS FOUND DESIRABLE TO CHANGE ANY TOLERANCE OR OTHER DETAIL SPECIFIED ON THIS DRAWING NOTIFY THE PURCHASER PROMPTLY.

MAXIMUM ALLOWABLE TOLERANCES HAVE BEEN DETERMINED AND DEVIATIONS WILL BE CAUSE FOR REJECTION. REMOVE ALL BURRS AND SHARP EDGES

MS-109 B



- A - 1/64 X 1/32 SLOT 4 SLOTS REQ.
- B - 3/16 (.187) D. 1 HOLE REQ.
- C - 13/64 X 13/32 SLOT 4 SLOTS REQ.
- D - 1/2 (.500) D C'BORE SLIGHTLY TO REMOVE PAINT.

NOTICE TO PERSONS RECEIVING THIS DRAWING

THE TECHNICAL MATERIEL CORPORATION claims proprietary right in the material disclosed hereon. This drawing is issued in confidence for engineering information only and may not be reproduced or used to manufacture anything shown hereon without permission from THE TECHNICAL MATERIEL CORPORATION to the user. This drawing is loaned for mutual assistance and is subject to recall at any time.

Property of:
THE TECHNICAL MATERIEL CORPORATION
 MAMARONECK, NEW YORK

- NOTE FINISH-
- S-404 YELLOW IRIDITE
 - S-114 ZINC CHROMATE PRIMER
 - S-115 SMOOTH GREY ENAMEL

REQ.	ITEM	PART NO.	DESCRIPTION	SYMBOL
		.064	THE TECHNICAL MATERIEL CORP.	
		STOCK SIZE	MAMARONECK. NEW YORK	
		ALUMINUM	MOUNTING PLATE	
		MATERIAL		
		WEIGHT PER PC.		
		52S-H32		
		TYPE & TEMPER		
		HEAT TREAT. SPEC.		
		SEE NOTE		
		FINISH & SPEC. NO.		

ISSUE	ITEM	CHANGED FROM	DATE	CN. NO.	DRAFTS	CHECKER	ENG. APP.	MODEL	PROJECT NO.	ASS'Y. NO.	DATE
B	1	S-404 WAS S101	12/10/52	1001	AC		EMN	BAC-3-S-500	153	A-137	9-6-52
A	1	REPRAYN W/CHGS.	8/21/53	1	C.D.D.	J. De	EMN	BAC-A-S-500	153	A-117	9-6-52
								BAC-A-S-20	108	A-117	7-22-52
								BAC-3-S-20	108	A-118	7-22-52

TOLERANCES: DEC. DIM. ±, FRAC. DIM. ±, ANGULAR DIM. ±

SCALE: DRILL, PUNCH, COMMERCIAL STOCK SIZES AND MANUFACTURERS TOLERANCES ARE NOT INCLUDED.

USED ON

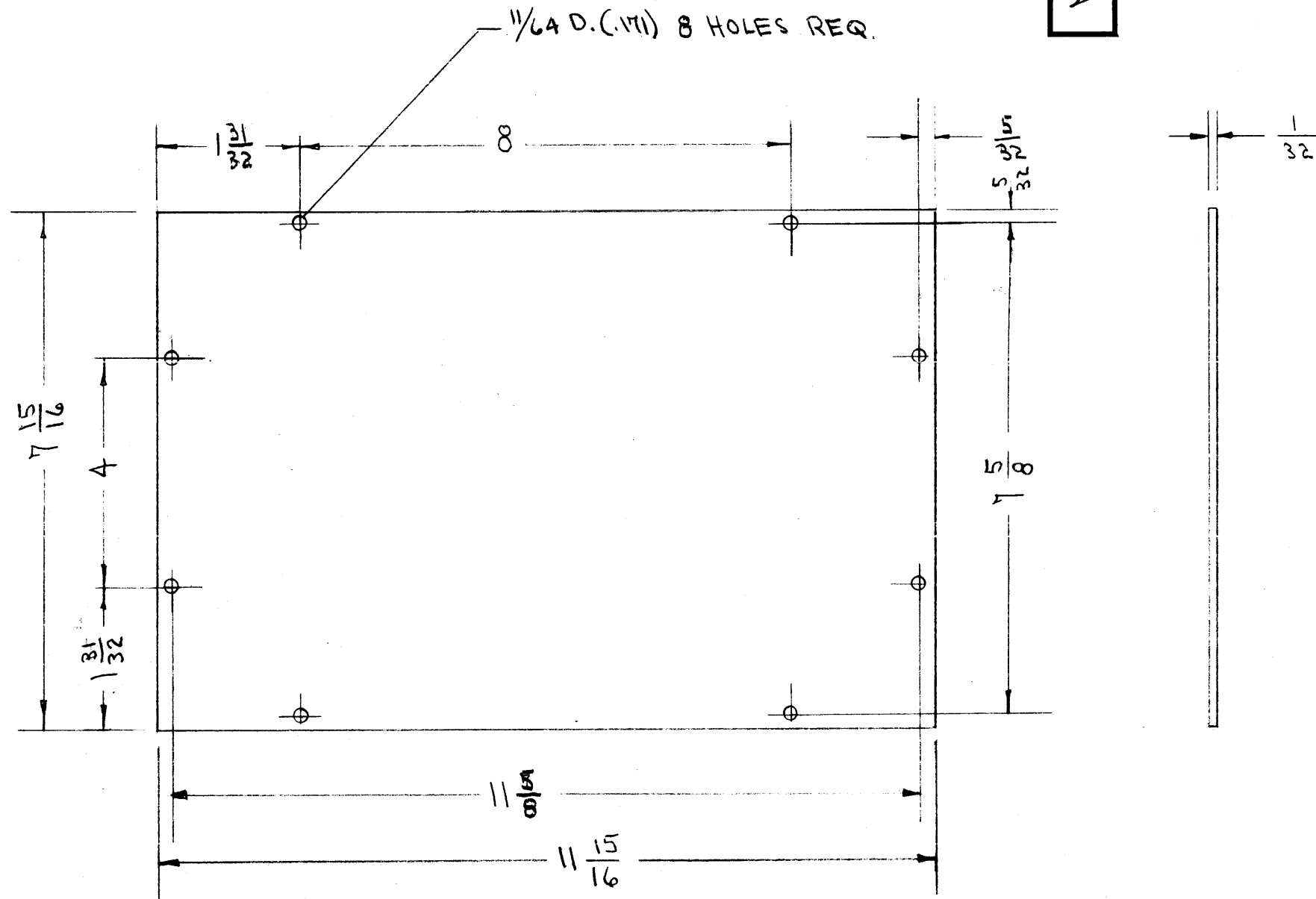
MS-109 B

IF IT IS FOUND DESIRABLE TO CHANGE ANY TOLERANCE OR OTHER DETAIL SPECIFIED ON THIS DRAWING NOTIFY THE PURCHASER PROMPTLY.

MAXIMUM ALLOWABLE TOLERANCES HAVE BEEN DETERMINED AND DEVIATIONS WILL BE CAUSE FOR REJECTION. REMOVE ALL BURRS AND SHARP EDGES

RELEASED

MS-117



NOTICE TO PERSONS RECEIVING THIS DRAWING

THE TECHNICAL MATERIEL CORPORATION claims proprietary right in the material disclosed hereon. This drawing is issued in confidence for engineering information only and may not be reproduced or used to manufacture anything shown hereon without permission from THE TECHNICAL MATERIEL CORPORATION to the user. This drawing is loaned for mutual assistance and is subject to recall at any time.

Property of:
THE TECHNICAL MATERIEL CORPORATION
MAMARONECK, NEW YORK

NOTE: GRAY WRINKLE FINISH TO BE SAME SHADE AS ICA CHASSIS #3792 COVER.

REF.: INSULINE CORP. OF AMER. CAT. # 1679

REQ.	ITEM	PART NO.	DESCRIPTION	SYMBOL
		17 GA.	THE TECHNICAL MATERIEL CORP.	
		STOCK SIZE	MAMARONECK. NEW YORK	
		STEEL	BOTTOM	
		MATERIAL		
		WEIGHT PER PC.		
		COLD ROLL		
		TYPE & TEMPER	C.D.D. 8-6-52	
			DRAWN	ELEC. DES. APP. MECH. DES. APP.
			CHECKED	FINAL APPROVAL
		HEAT TREAT. SPEC.		
		SEE NOTE		MS-117
		FINISH & SPEC. NO.		

ISSUE	ITEM	CHANGED FROM	DATE	CN. NO.	DRAFTS	CHECKER	ENG. APP.
TOLERANCES		SCALE: 1/2 SIZE					
ALL OTHERS	DEC. DIM. ± FRAC. DIM. ± ANGULAR DIM. ±	DRILL, PUNCH, COMMERCIAL STOCK SIZES AND MANUFACTURERS TOLERANCES ARE NOT INCLUDED.					

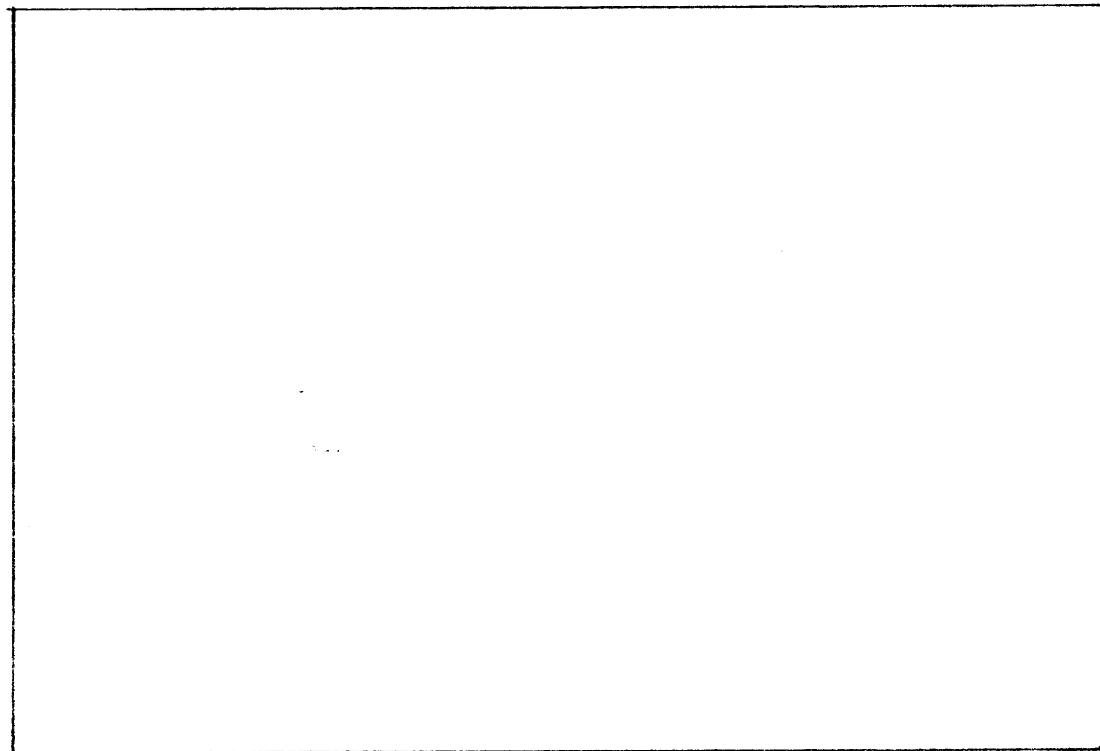
VTG	103	A-124	8-6-52
MODEL	PROJECT NO.	ASS'Y. NO.	DATE
USED ON			

IF IT IS FOUND DESIRABLE TO CHANGE ANY TOLERANCE OR OTHER DETAIL SPECIFIED ON THIS DRAWING NOTIFY THE PURCHASER PROMPTLY.

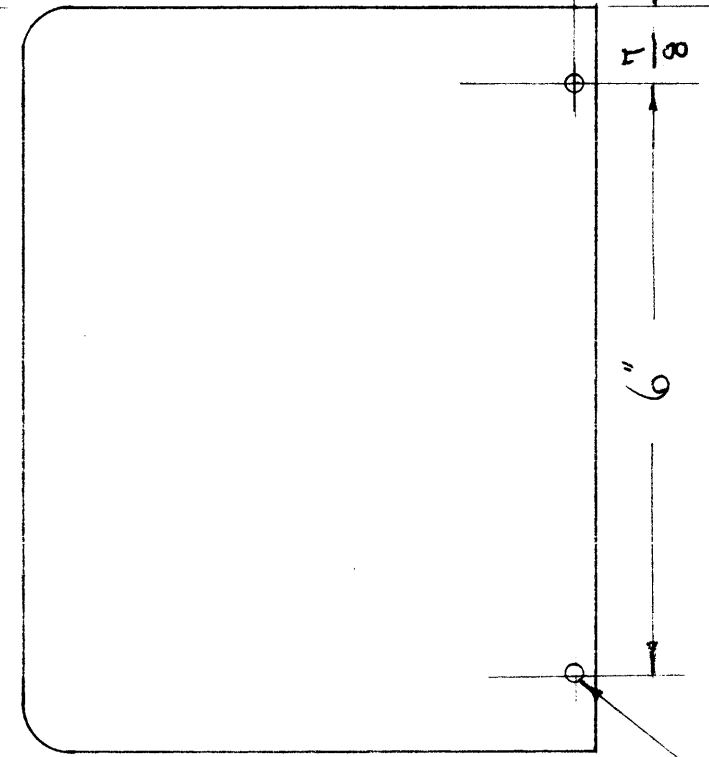
MAXIMUM ALLOWABLE TOLERANCES HAVE BEEN DETERMINED AND DEVIATIONS WILL BE CAUSE FOR REJECTION. REMOVE ALL BURRS AND SHARP EDGES

RELEASED

MS-118



$7 \frac{3}{4}$



$\frac{3}{16}$ D. (.187) 4 HOLES REQ.

$11 \frac{7}{8}$

6

DIMENSIONS FOR REFERENCE ONLY

PERSONS RECEIVING THIS DRAWING

THE TECHNICAL MATERIEL CORPORATION claims proprietary right in the material disclosed hereon. This drawing is issued in confidence for engineering information only and may not be reproduced or used to manufacture anything shown hereon without permission from THE TECHNICAL MATERIEL CORPORATION to the user. This drawing is loaned for mutual assistance and is subject to recall at any time.

Property of:

THE TECHNICAL MATERIEL CORPORATION
MAMARONECK, NEW YORK

REF.: INSULINE CORP. OF AMERICA. CAT. # 3972

REQ.	ITEM	PART NO.	DESCRIPTION	SYMBOL
			THE TECHNICAL MATERIEL CORP. MAMARONECK, NEW YORK	
		STOCK SIZE	COVER	
		MATERIAL	WEIGHT PER PC.	
		TYPE & TEMPER	C.D.D. 8-6-52	<i>PTB</i>
		HEAT TREAT. SPEC.	DRAWN	ELEC. DES. APP. MECH. DES. APP.
		FINISH & SPEC. NO.	CHECKED	FINAL APPROVAL
				MS-118

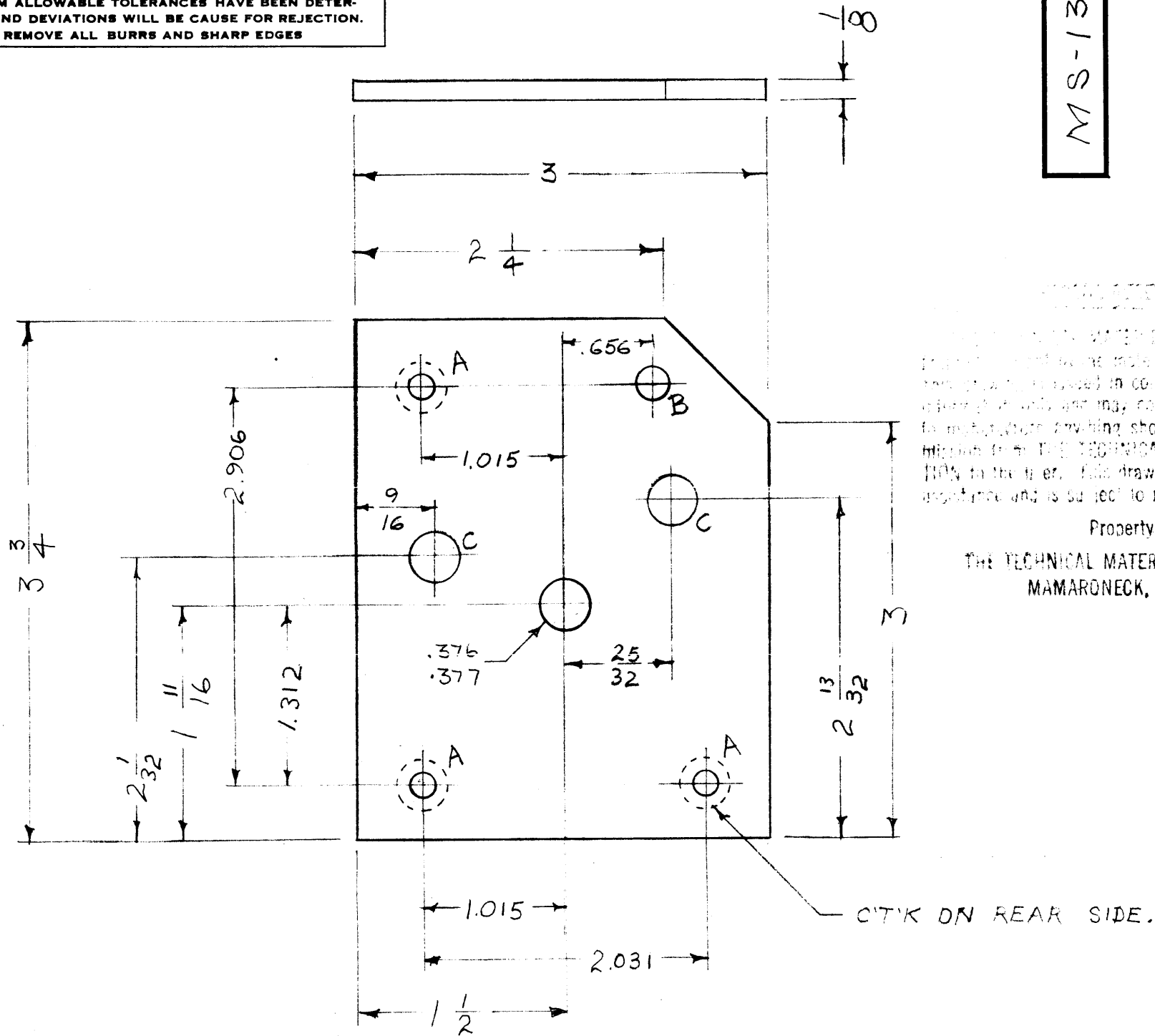
ISSUE	ITEM	CHANGED FROM	DATE	CN. NO.	DRAFTS	CHECKER	ENG. APP.
TOLERANCES		SCALE: $\frac{1}{2}$ SIZE					
ALL OTHERS	DEC. DIM. \pm FRAC. DIM. $\pm \frac{1}{64}$ ANGULAR DIM. \pm	DRILL, PUNCH, COMMERCIAL STOCK SIZES AND MANUFACTURERS TOLERANCES ARE NOT INCLUDED.					

VTG.	103	A-124	8-6-52
MODEL	PROJECT NO.	ASS'Y. NO.	DATE
USED ON			

IF IT IS FOUND DESIRABLE TO CHANGE ANY TOLERANCE OR OTHER DETAIL SPECIFIED ON THIS DRAWING NOTIFY THE PURCHASER PROMPTLY.

MAXIMUM ALLOWABLE TOLERANCES HAVE BEEN DETERMINED AND DEVIATIONS WILL BE CAUSE FOR REJECTION. REMOVE ALL BURRS AND SHARP EDGES

MS-135 A



THE TECHNICAL MATERIEL CORPORATION claims copyright in the material disclosed herein and it is understood in confidence for engineering information only and may not be reproduced or used for any other purpose without the permission of THE TECHNICAL MATERIEL CORPORATION in the U.S.A. This drawing is loaned for mutual assistance and is subject to recall at any time.

Property of:
THE TECHNICAL MATERIEL CORPORATION
MAMARONECK, NEW YORK

LEGEND

- A= #19 DRILL (.166), THEN C'T'K FOR #8 FLAT HEAD SCREW. 3 REQ.
- B= 1/4 D (.250). - 1 REQ.
- C= 3/8 D (.375) - 2 REQ.

NOTE:

RELATED HOLES WITH DWG. MS-134 ARE TO BE JIG DRILLED WITH THE SAME JIG.

.376 HOLE TO BE REAMED IN LINE WITH DWG. MS-134 AFTER ASSEMBLY.

REF. - DWG. MS-134

REQ.	ITEM	PART NO.	DESCRIPTION	SYMBOL
		1/8"	THE TECHNICAL MATERIEL CORP. MAMARONECK, NEW YORK	
		STOCK SIZE		
		ALUM.	REAR MOTOR MOUNT	
		MATERIAL		
		24S-73		
		TYPE & TEMPER		
		HEAT TREAT. SPEC.		
		S-404 YELLOW IRIDITE		
		FINISH & SPEC. NO.		

ISSUE	ITEM	CHANGED FROM	DATE	CN. NO.	DRAFTS	CHECKER	ENG. APP.
A	1	S-404 WAS S-101	12/10/52	1001	AB		EMN

TOLERANCES: DEC. DIM. ± .005, FRAC. DIM. ± 1/64, ANGULAR DIM. ±

SCALE: FULL

DRILL, PUNCH, COMMERCIAL STOCK SIZES AND MANUFACTURERS TOLERANCES ARE NOT INCLUDED.

QTY UNIT	MODEL	PROJECT NO.	ASS'Y. NO.	DATE
1	VOX	101	A-586	9-10-52

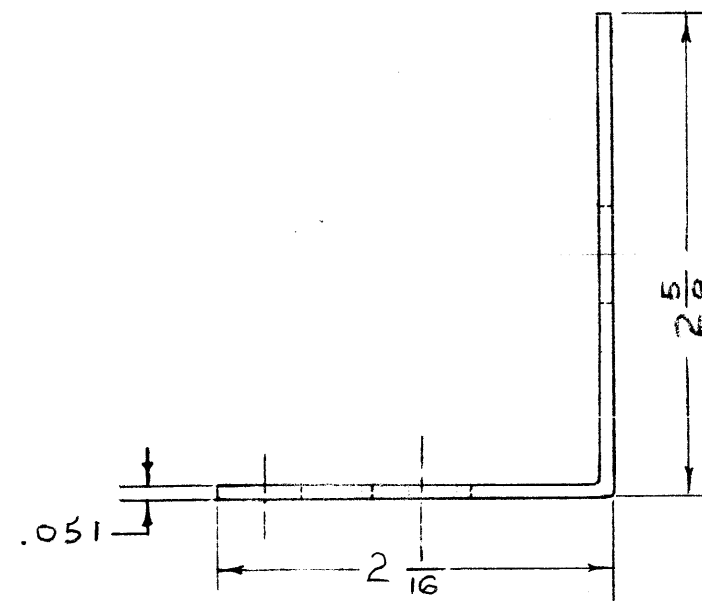
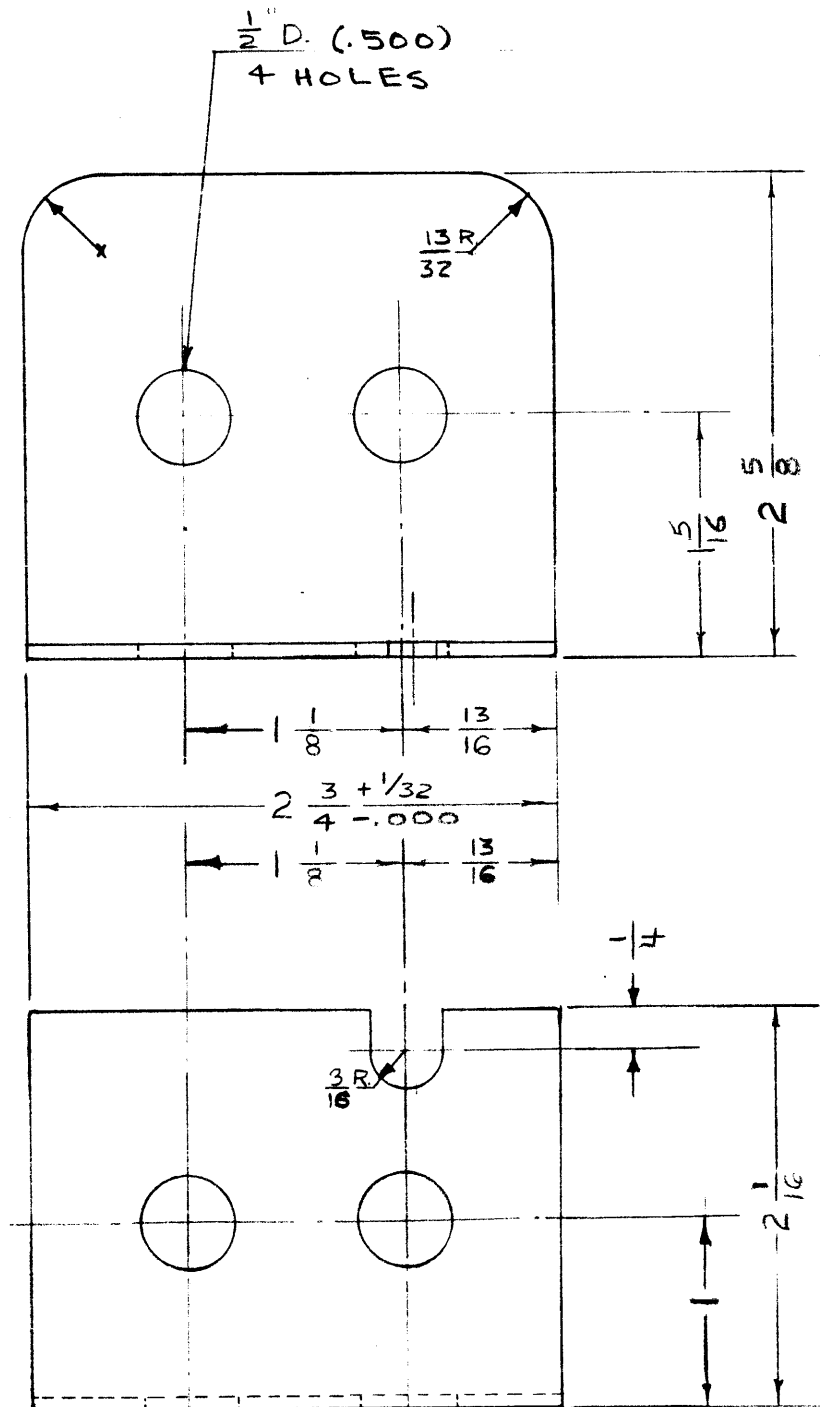
USED ON

IF IT IS FOUND DESIRABLE TO CHANGE ANY TOLERANCE OR OTHER DETAIL SPECIFIED ON THIS DRAWING NOTIFY THE PURCHASER PROMPTLY.

MAXIMUM ALLOWABLE TOLERANCES HAVE BEEN DETERMINED AND DEVIATIONS WILL BE CAUSE FOR REJECTION. REMOVE ALL BURRS AND SHARP EDGES

RELEASED

MS-158



NOTICE TO PERSONS RECEIVING THIS DRAWING

THE TECHNICAL MATERIEL CORPORATION claims proprietary right in the material disclosed herein. This drawing is issued in confidence for engineering information only and may not be reproduced or used to manufacture anything shown hereon without permission from THE TECHNICAL MATERIEL CORPORATION to the user. This drawing is loaned for mutual assistance and is subject to recall at any time.

Property of:
THE TECHNICAL MATERIEL CORPORATION
MAMARONECK, NEW YORK



REQ.	ITEM	PART NO.	DESCRIPTION	SYMBOL
		.051 THK.	THE TECHNICAL MATERIEL CORP. MAMARONECK, NEW YORK	
		STOCK SIZE		
	ALUMINUM	<i>ff</i>	TOP COVER,	
		MATERIAL	MOTOR HOUSING	
		52S-H32		
		TYPE & TEMPER		
		<i>ff</i>		
		HEAT TREAT. SPEC.		
		<i>ff</i>		
		FINISH & SPEC. NO.		

ISSUE	ITEM	CHANGED FROM	DATE	CN. NO.	DRAFTS	CHECKER	ENG. APP.
TOLERANCES							
SCALE: FULL SIZE							
DRILL, PUNCH, COMMERCIAL STOCK SIZES AND MANUFACTURERS TOLERANCES ARE NOT INCLUDED.							
ALL OTHERS	DEC. DIM. ± .005						
	FRAC. DIM. ± 1/64						
	ANGULAR DIM. ±						

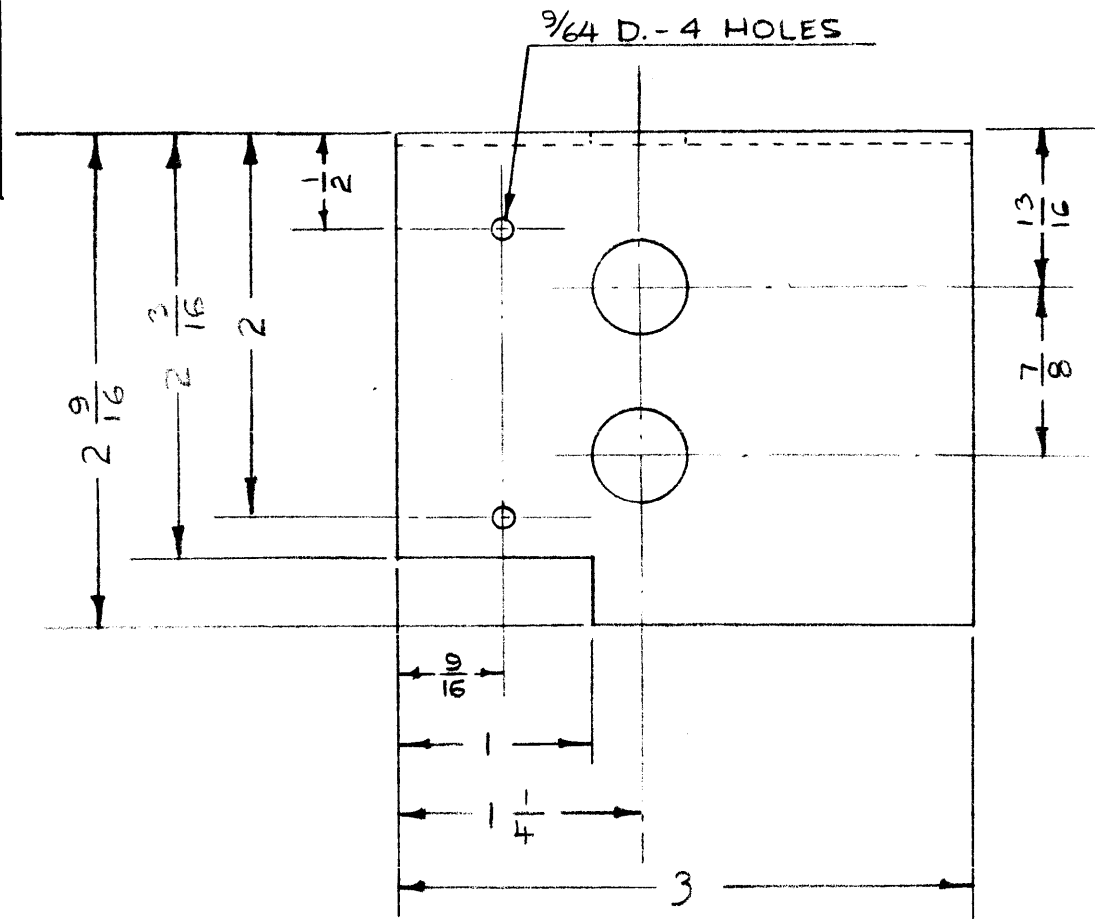
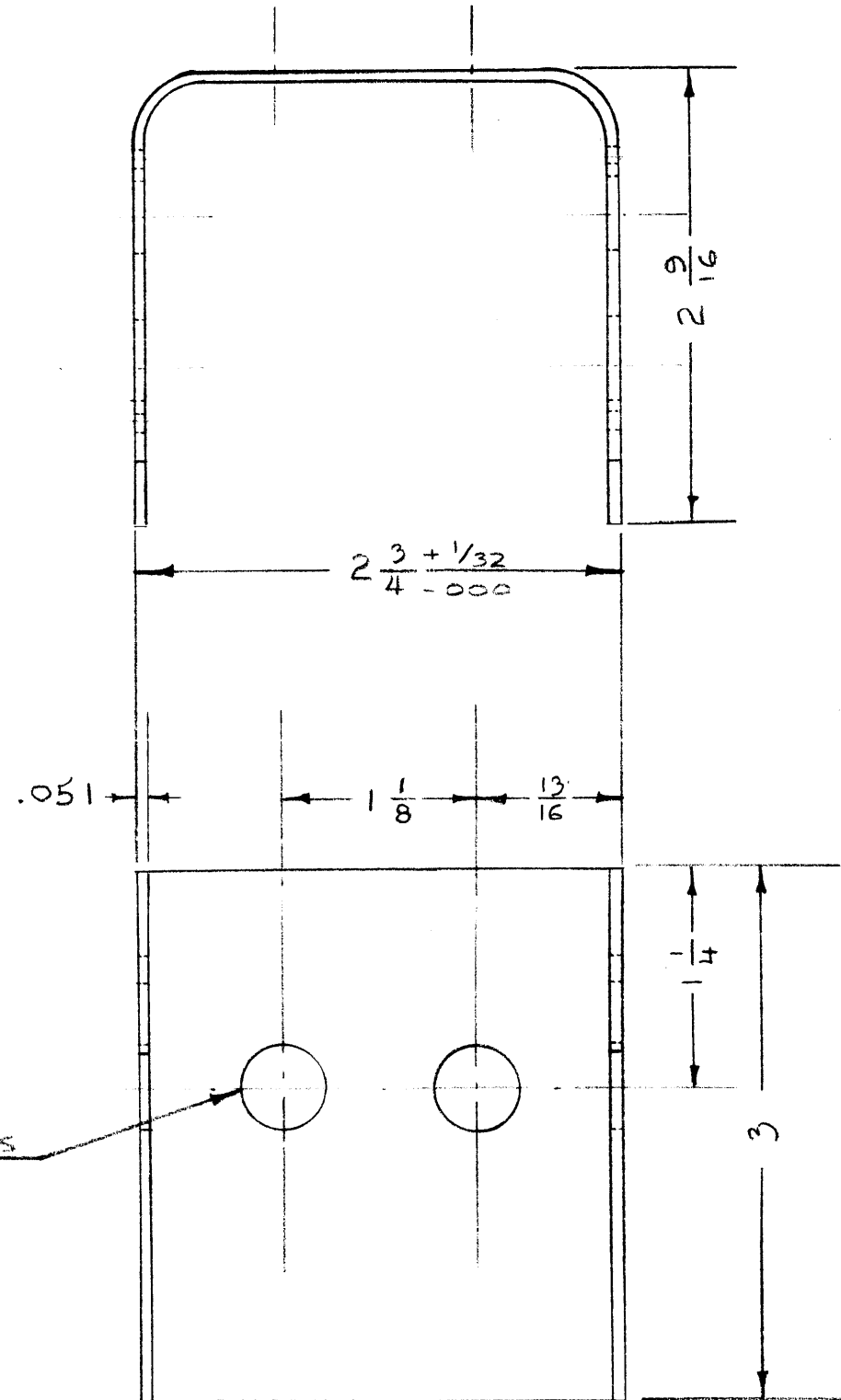
TWR-115	151	A-214	9-23-52
MODEL	PROJECT NO.	ASS'Y. NO.	DATE
USED ON			

IF IT IS FOUND DESIRABLE TO CHANGE ANY TOLERANCE OR OTHER DETAIL SPECIFIED ON THIS DRAWING NOTIFY THE PURCHASER PROMPTLY.

MAXIMUM ALLOWABLE TOLERANCES HAVE BEEN DETERMINED AND DEVIATIONS WILL BE CAUSE FOR REJECTION. REMOVE ALL BURRS AND SHARP EDGES

RELEASED

MS-159



NOTICE TO PERSONS RECEIVING THIS DRAWING

THE TECHNICAL MATERIEL CORPORATION claims proprietary right in the material disclosed hereon. This drawing is issued in confidence for engineering information only and may not be reproduced or used to manufacture anything shown hereon without permission from THE TECHNICAL MATERIEL CORPORATION to the user. This drawing is loaned for mutual assistance and is subject to recall at any time.

Property of:
THE TECHNICAL MATERIEL CORPORATION
MAMARONECK, NEW YORK



REQ.	ITEM	PART NO.	DESCRIPTION	SYMBOL
			.051 THK.	
			STOCK SIZE	
		ALUMINUM	ff	
		MATERIAL	WEIGHT PER PC.	
		525-H32		
		TYPE & TEMPER	ff	
		HEAT TREAT. SPEC.	ff	
		FINISH & SPEC. NO.	ff	
			9-23-52	
			AD 11/17/52	
			MS-159	

ISSUE	ITEM	CHANGED FROM	DATE	CN. NO.	DRAFTS	CHECKER	ENG. APP.

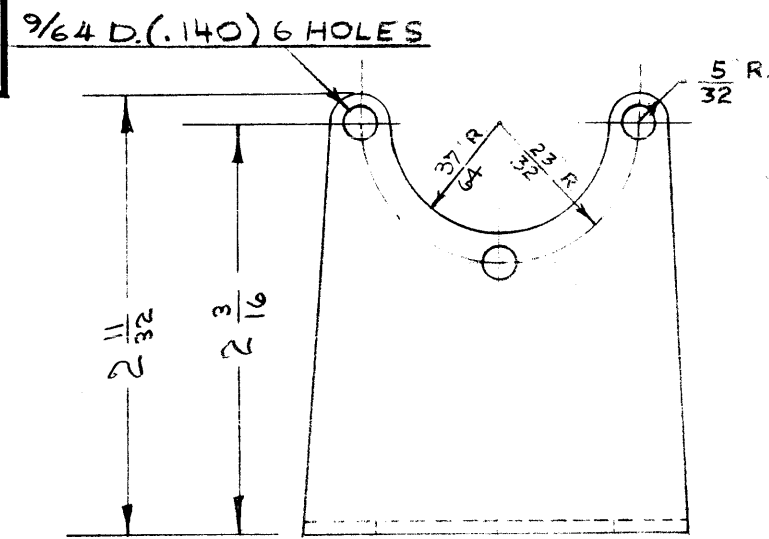
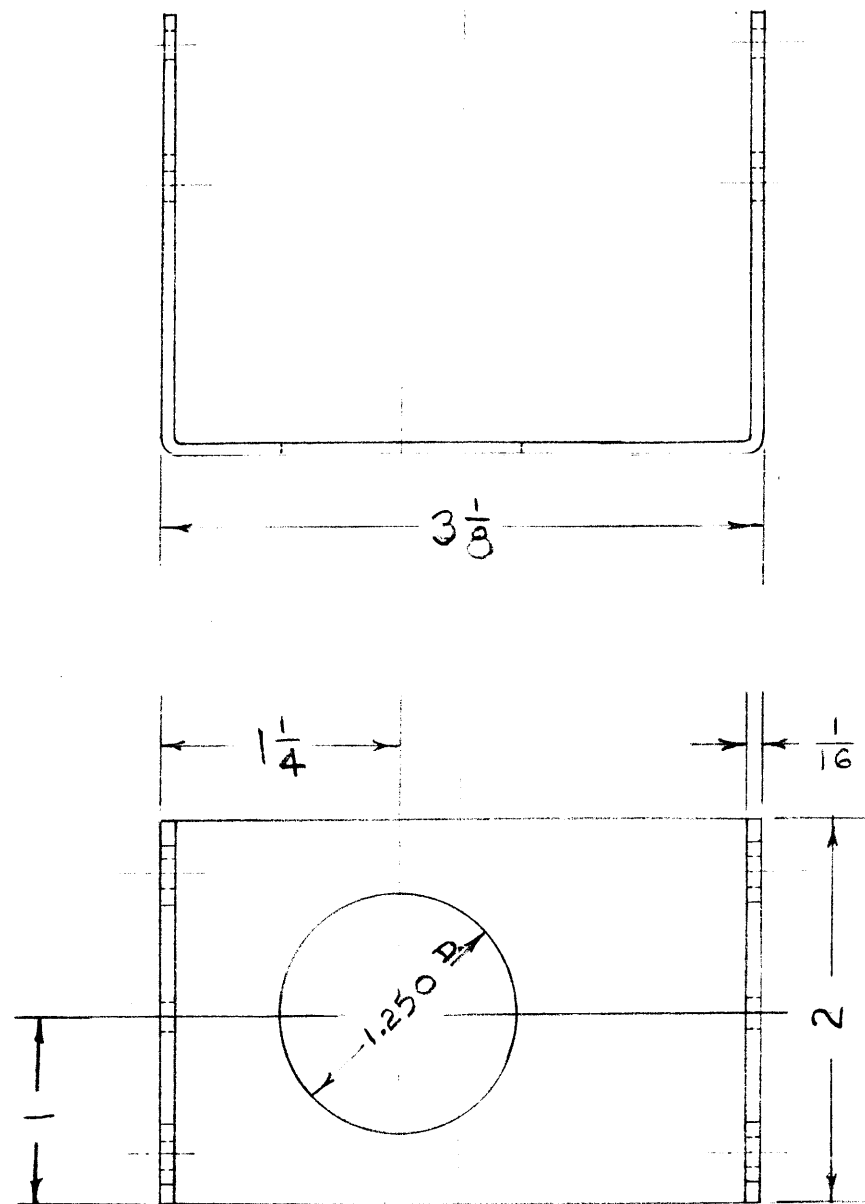
MODEL	PROJECT NO.	ASS'Y. NO.	DATE
TWR 115	151	A-214	9-23-52

IF IT IS FOUND DESIRABLE TO CHANGE ANY TOLERANCE OR OTHER DETAIL SPECIFIED ON THIS DRAWING NOTIFY THE PURCHASER PROMPTLY.

MAXIMUM ALLOWABLE TOLERANCES HAVE BEEN DETERMINED AND DEVIATIONS WILL BE CAUSE FOR REJECTION. REMOVE ALL BURRS AND SHARP EDGES

RELEASED

MS-160 B



NOTE TO PERSONS RECEIVING THIS DRAWING

THE TECHNICAL MATERIEL CORPORATION claims proprietary right in the material disclosed hereon. This drawing is issued in confidence for engineering information only and may not be reproduced or used to manufacture anything shown hereon without permission from THE TECHNICAL MATERIEL CORPORATION to the user. This drawing is loaned for mutual assistance and is subject to recall at any time.

Property of:
THE TECHNICAL MATERIEL CORPORATION
MAMARONECK, NEW YORK



B	2	3/8 WAS 37/32	9-9-53	2		PJM	PJM
A	1	DIMENSIONS CHANGED	3/2/53	1	C.D.D.	PJM	PJM
ISSUE	ITEM	CHANGED FROM	DATE	CN. NO.	DRAFTS	CHECKER	ENG. APP.

TOLERANCES		SCALE:
ALL OTHERS	DEC. DIM. ± .005 FRAC. DIM. ± 1/64 ANGULAR DIM. ±	DRILL, PUNCH, COMMERCIAL STOCK SIZES AND MANUFACTURERS TOLERANCES ARE NOT INCLUDED.

TWR-115	151	A-216	9-8-52
MODEL	PROJECT NO.	ASS'Y. NO.	DATE
USED ON			

REQ.	ITEM	PART NO.	DESCRIPTION	SYMBOL
		16 GA. (.062)	THE TECHNICAL MATERIEL CORP. MAMARONECK, NEW YORK	
		STOCK SIZE		SADDLE FRAME
	STEEL	ff		
	MATERIAL	WEIGHT PER PC.		
	COLD ROLL STEEL			
	TYPE & TEMPER			
	HEAT TREAT. SPEC.			
	FINISH & SPEC. NO.			

<i>L. J. Gabel</i>	<i>PJM</i>
DRAWN	MECH. DES. APP.
JAD. 1/1/52	
CHECKED	FINAL APPROVAL
	MS-160
	B

IF IT IS FOUND DESIRABLE TO CHANGE ANY TOLERANCE OR OTHER DETAIL SPECIFIED ON THIS DRAWING NOTIFY THE PURCHASER PROMPTLY.

MAXIMUM ALLOWABLE TOLERANCES HAVE BEEN DETERMINED AND DEVIATIONS WILL BE CAUSE FOR REJECTION. REMOVE ALL BURRS AND SHARP EDGES

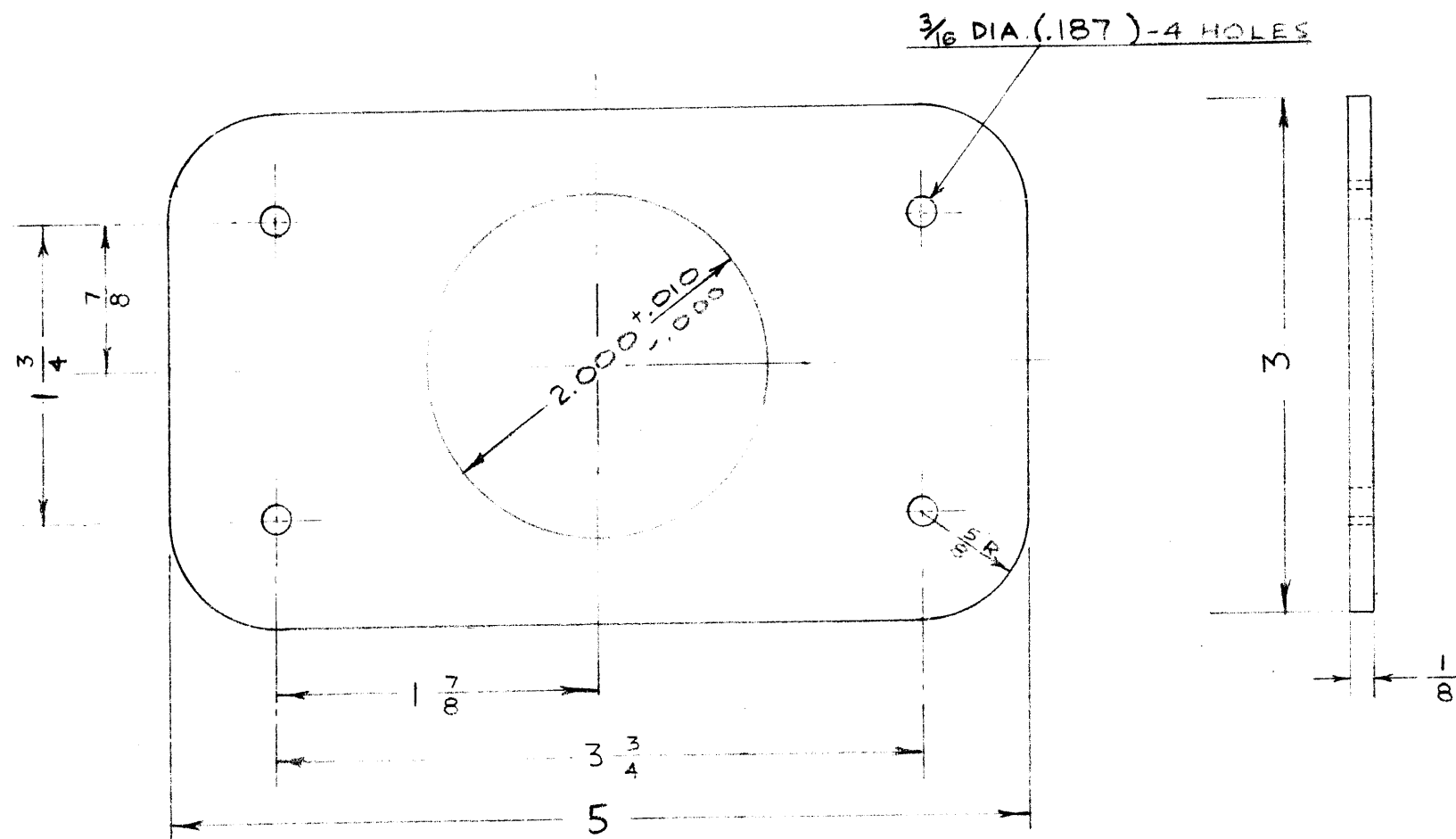
RELEASED

MS-161

NOTICE TO PERSONS RECEIVING THIS DRAWING

THE TECHNICAL MATERIEL CORPORATION claims proprietary right in the material disclosed hereon. This drawing is issued in confidence for engineering information only and may not be reproduced or used to manufacture anything shown hereon without permission from THE TECHNICAL MATERIEL CORPORATION to the user. This drawing is loaned for mutual assistance and is subject to recall at any time.

Property of:
THE TECHNICAL MATERIEL CORPORATION
MAMARONECK, NEW YORK



REQ.	ITEM	PART NO.	DESCRIPTION	SYMBOL
		1/8 THK.	THE TECHNICAL MATERIEL CORP.	
		STOCK SIZE	MAMARONECK, NEW YORK	
	STEEL	SS	FLANGE	
	MATERIAL	WEIGHT PER PC.		
	COLD ROLL STEEL			
	TYPE & TEMPER			
	HEAT TREAT. SPEC.			
	FINISH & SPEC. NO.			

ISSUE	ITEM	CHANGED FROM	DATE	CN. NO.	DRAFTS	CHECKER	ENG. APP.

TOLERANCES: DEC. DIM. ± .005, FRAC. DIM. ± 1/64, ANGULAR DIM. ±

SCALE: FULL SIZE

DRILL, PUNCH, COMMERCIAL STOCK SIZES AND MANUFACTURERS TOLERANCES ARE NOT INCLUDED.

TWR-115	151	A-217	9-8-52
MODEL	PROJECT NO.	ASS'Y. NO.	DATE

USED ON

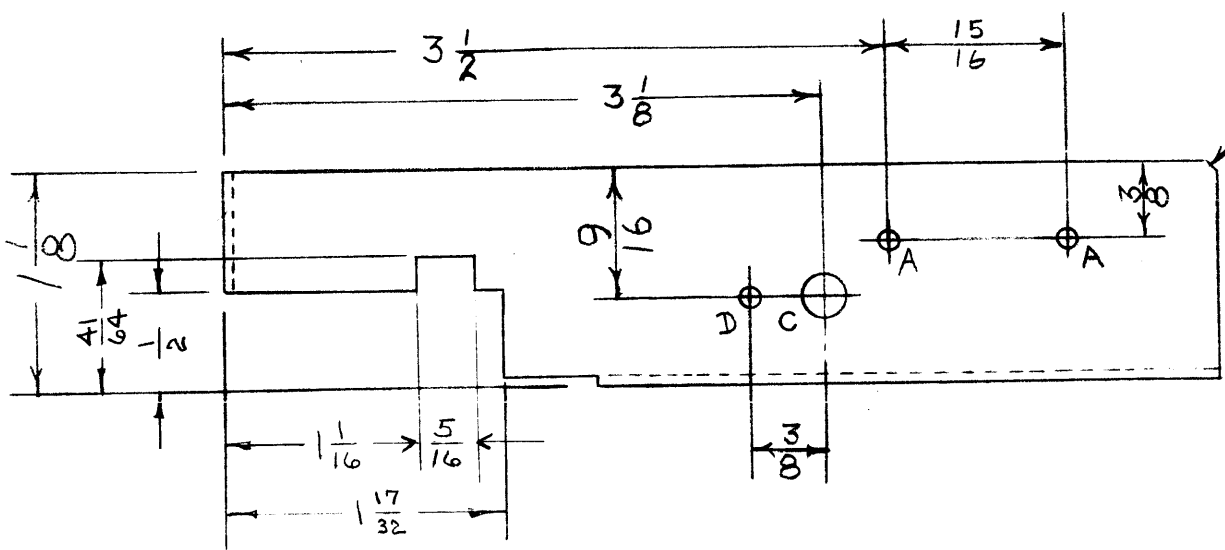
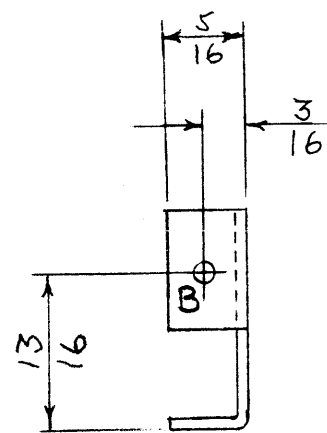


IF IT IS FOUND DESIRABLE TO CHANGE ANY TOLERANCE OR OTHER DETAIL SPECIFIED ON THIS DRAWING NOTIFY THE PURCHASER PROMPTLY.

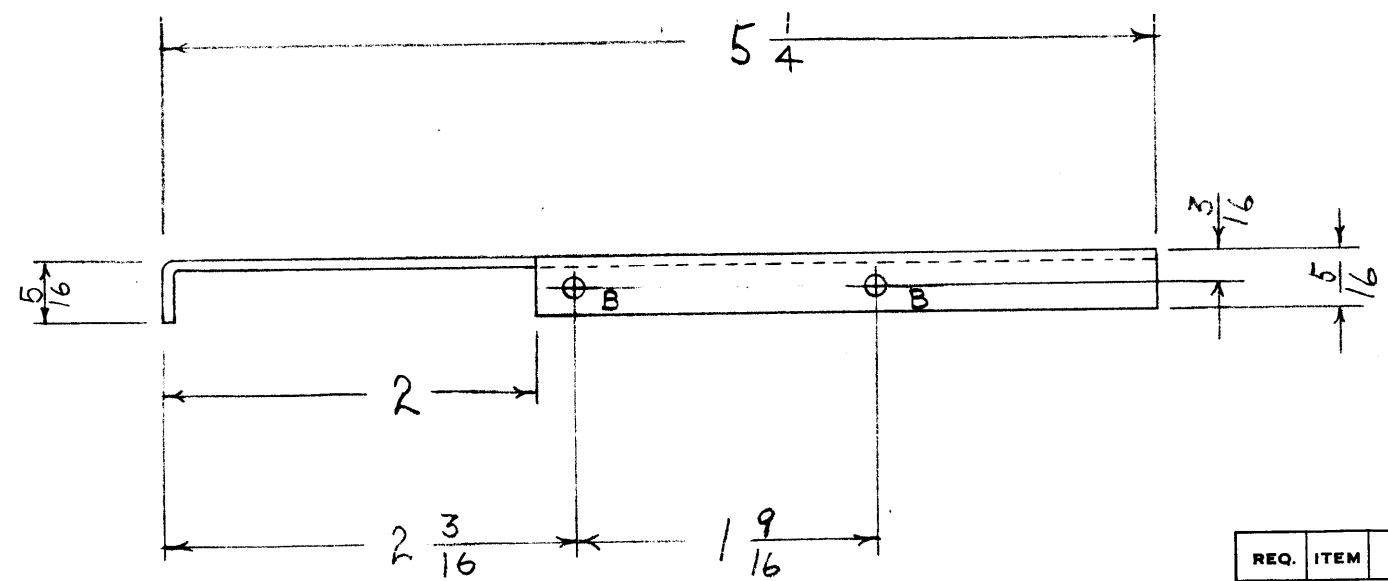
MAXIMUM ALLOWABLE TOLERANCES HAVE BEEN DETERMINED AND DEVIATIONS WILL BE CAUSE FOR REJECTION. REMOVE ALL BURRS AND SHARP EDGES

RELEASED

MS-165 C



A = 1/8 (.125) DIA. - 2 HOLES
 B = 9/64 (.140) DIA. - 3 HOLES
 C = 1/4 (.250) DIA. - 1 HOLE
 D = 3/32 (.093) DIA. - 1 HOLE



NOTICE TO PERSONS RECEIVING THIS DRAWING

THE TECHNICAL MATERIEL CORPORATION claims proprietary right in the material disclosed hereon. This drawing is issued in confidence for engineering information only and may not be reproduced or used to manufacture anything shown hereon without permission from THE TECHNICAL MATERIEL CORPORATION to the user. This drawing is loaned for mutual assistance and is subject to recall at any time.

Property of:
 THE TECHNICAL MATERIEL CORPORATION
 MAMARONECK, NEW YORK

REQ. ITEM	PART NO.	DESCRIPTION	SYMBOL
	.040	THE TECHNICAL MATERIEL CORP.	
	STOCK SIZE	MAMARONECK. NEW YORK	
ALUM.	—#	FRONT SHIELD	
MATERIAL	WEIGHT PER PC.		
	52S - H32		
	TYPE & TEMPER		
	—#		
	HEAT TREAT. SPEC.		
	S-404 YELLOW IRIDITE		
	FINISH & SPEC. NO.		

ISSUE	ITEM	CHANGED FROM	DATE	CN. NO.	DRAFTS	CHECKER	ENG. APP.
C	1	S-404 WAS S-101	12/11/52	1001	1/6		EMN
B	2	DIM. CHANGED	2/24/53	2	WSD	P776	P776
A	1	D HOLE ADDED	12/31/52	1	1/6	P776	P776

TOLERANCES		SCALE: 1/1
ALL OTHERS	DEC. DIM. ± FRAC. DIM. ± Y64 ANGULAR DIM. ±	DRILL, PUNCH, COMMERCIAL STOCK SIZES AND MANUFACTURERS TOLERANCES ARE NOT INCLUDED.

MODEL	PROJECT NO.	ASS'Y. NO.	DATE
FFRD-8	104	A-229	10-16-52
FFRD-7	104	A-229	10-16-52
FFRD-6	104	A-229	10-16-52
FFRD-5	104	A-229	10-16-52

USED ON

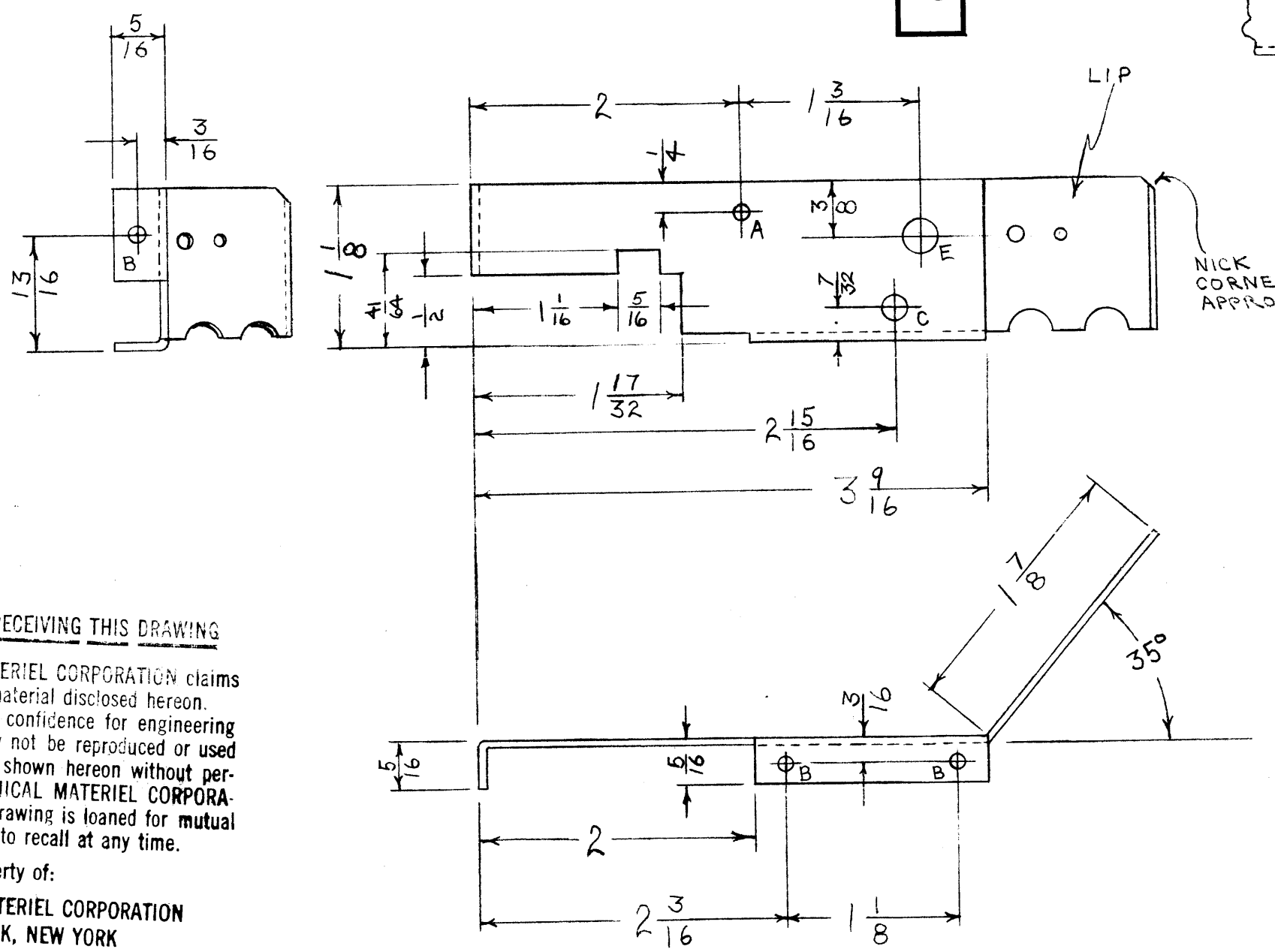
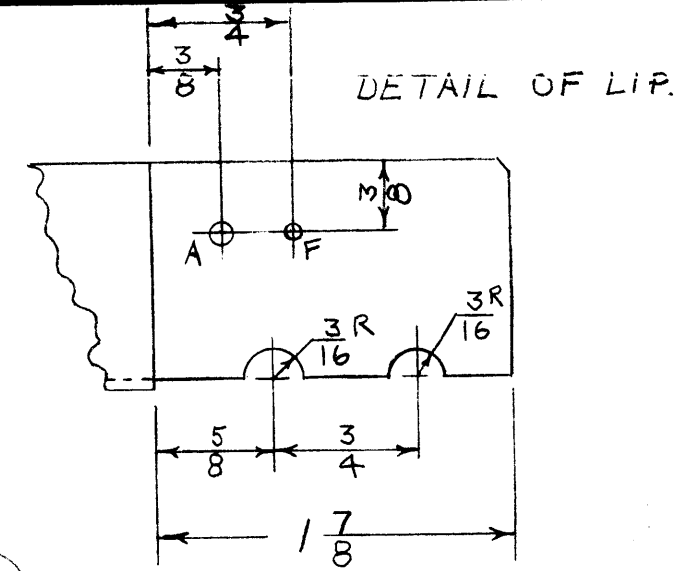
MS-165 C

IF IT IS FOUND DESIRABLE TO CHANGE ANY TOLERANCE OR OTHER DETAIL SPECIFIED ON THIS DRAWING NOTIFY THE PURCHASER PROMPTLY.

MAXIMUM ALLOWABLE TOLERANCES HAVE BEEN DETERMINED AND DEVIATIONS WILL BE CAUSE FOR REJECTION. REMOVE ALL BURRS AND SHARP EDGES

RELEASED

MS-166 B



- A = 1/8 (.125) DIA. - 2 HOLES
- B = 9/64 (.140) DIA. - 3 HOLES
- C = 3/16 (.187) DIA. - 1 HOLE
- E = 1/4 (.250) DIA. - 1 HOLE
- F = 3/32 (.093) DIA. - 1 HOLE

NOTICE TO PERSONS RECEIVING THIS DRAWING
 THE TECHNICAL MATERIEL CORPORATION claims proprietary right in the material disclosed hereon. This drawing is issued in confidence for engineering information only and may not be reproduced or used to manufacture anything shown hereon without permission from THE TECHNICAL MATERIEL CORPORATION to the user. This drawing is loaned for mutual assistance and is subject to recall at any time.

Property of:
 THE TECHNICAL MATERIEL CORPORATION
 MAMARONECK, NEW YORK

REQ. ITEM	PART NO.	DESCRIPTION	SYMBOL
	.040	THE TECHNICAL MATERIEL CORP.	
	STOCK SIZE	MAMARONECK. NEW YORK	
	ALUM. -#	CENTER SHIELD	
	MATERIAL		
	WEIGHT PER PC.		
	52S-H32		
	TYPE & TEMPER		
	HEAT TREAT. SPEC.		
	S-404 YELLOW IRIDITE.		
	FINISH & SPEC. NO.		

ISSUE	ITEM	CHANGED FROM	DATE	CN. NO.	DRAFTS	CHECKER	ENG. APP.
B	1	S-404 WAS S-101	12/1/52	1001	WJS		EMN
A	1	A HOLE DELETED. F HOLE ADDED. DIM. CHANGED	2/24/53	1	WJS	PJB	PJB

MODEL	PROJECT NO.	ASS'Y. NO.	DATE
FFRD-8	104	A-229	10-15-52
FFRD-7	104	A-229	10-15-52
FFRD-6	104	A-229	10-15-52
FFRD-5	104	A-229	10-15-52

TOLERANCES: DEC. DIM. ± 1/64, FRAC. DIM. ± 1/64, ANGULAR DIM. ±

SCALE: 1/4"

DRILL, PUNCH, COMMERCIAL STOCK SIZES AND MANUFACTURERS TOLERANCES ARE NOT INCLUDED.

USED ON

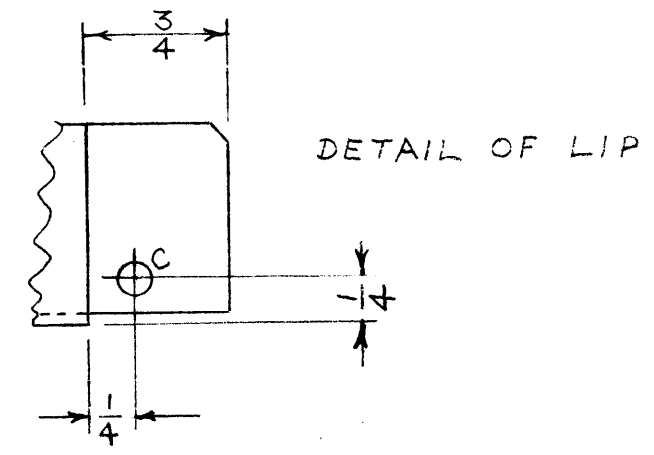
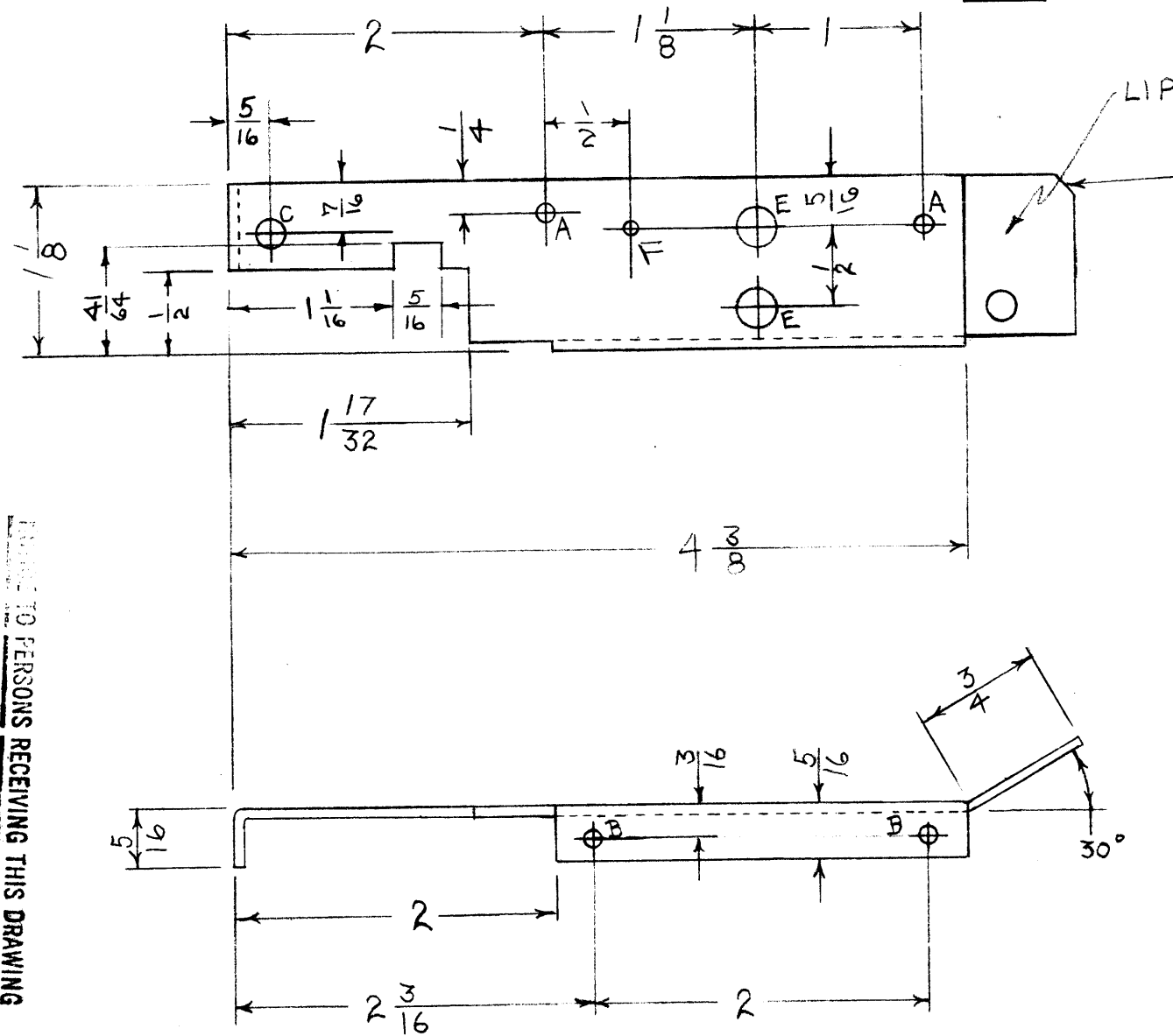
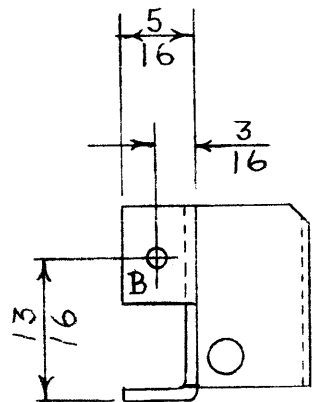
MS-166 B

IF IT IS FOUND DESIRABLE TO CHANGE ANY TOLERANCE OR OTHER DETAIL SPECIFIED ON THIS DRAWING NOTIFY THE PURCHASER PROMPTLY.

MAXIMUM ALLOWABLE TOLERANCES HAVE BEEN DETERMINED AND DEVIATIONS WILL BE CAUSE FOR REJECTION. REMOVE ALL BURRS AND SHARP EDGES

RELEASED

MS-167 D



- A = 1/8 (.125) DIA. - 2 HOLES
- B = 9/64 (.140) DIA. - 3 HOLES.
- C = 3/16 (.187) DIA. - 2 HOLE
- E = 1/4 (.250) DIA - 2 HOLES

F = 3/32 (.093) DIA - 1 HOLE
(FFRD-3M ONLY)

FOR PERSONS RECEIVING THIS DRAWING

THE TECHNICAL MATERIEL CORPORATION claims proprietary right in the material disclosed hereon. This drawing is issued in confidence for engineering information only and may not be reproduced or used to manufacture anything shown hereon without permission from THE TECHNICAL MATERIEL CORPORATION to the user. This drawing is loaned for mutual assistance and is subject to recall at any time.

Property of:
THE TECHNICAL MATERIEL CORPORATION
MAMARONECK, NEW YORK

ISSUE	ITEM	CHANGED FROM	DATE	CN. NO.	DRAFTS	CHECKER	ENG. APP.
D	1	S-404 WAS S-101	12/11/54	1001	AD	EMN	
C	1	BLANK SIZE ADDED	5-16-55	3	AD	JAS	
B	1	'F' HOLE ADDED	9/6/55	2	WDL	JAS	
A	1	DIM. CHANGED	2/24/53	1	WDL	JAS	

REQ PER UNIT	MODEL	PROJECT NO.	ASS'Y. NO.	DATE
1	FFRD-3M			5-6-55
1	FFRD-8	104	A-229	10-15-52
1	FFRD-7	104	A-229	10-15-52
1	FFRD-6	104	A-229	10-15-52
1	FFRD-5	104	A-229	10-15-52

REQ.	ITEM	PART NO.	DESCRIPTION	SYMBOL
		.040	THE TECHNICAL MATERIEL CORP.	
		STOCK SIZE	MAMARONECK. NEW YORK	
		ALUM.	REAR SHIELD	
		MATERIAL		
		WEIGHT PER PC.		
		52S - H32		
		TYPE & TEMPER		
		HEAT TREAT. SPEC.		
		S-404 YELLOW IRIDITE		
		FINISH & SPEC. NO.		

TOLERANCES: DEC. DIM. ± 1/64, FRAC. DIM. ± 1/64, ANGULAR DIM. ±

SCALE: DRILL, PUNCH, COMMERCIAL STOCK SIZES AND MANUFACTURERS TOLERANCES ARE NOT INCLUDED.

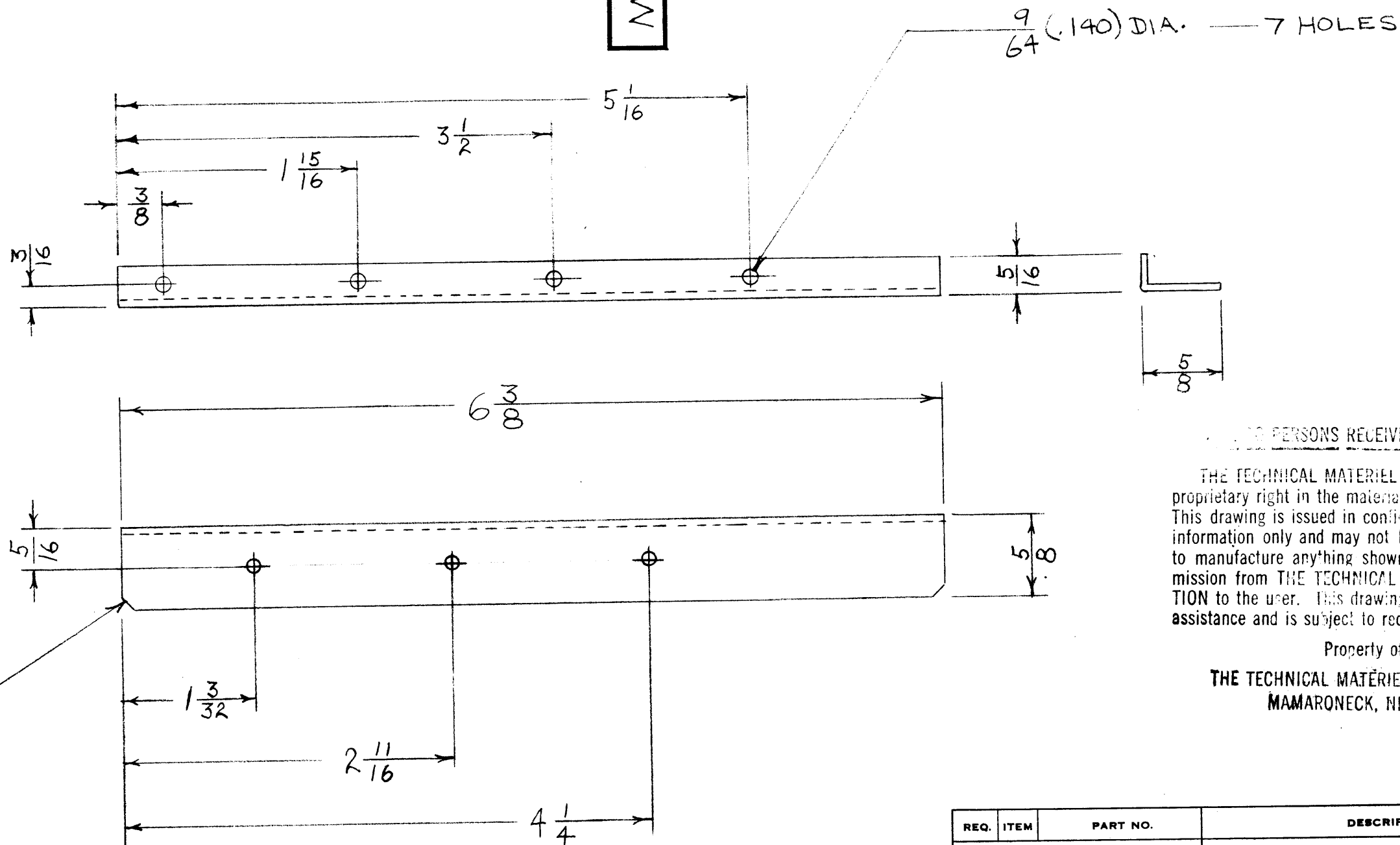
USED ON

IF IT IS FOUND DESIRABLE TO CHANGE ANY TOLERANCE OR OTHER DETAIL SPECIFIED ON THIS DRAWING NOTIFY THE PURCHASER PROMPTLY.

MAXIMUM ALLOWABLE TOLERANCES HAVE BEEN DETERMINED AND DEVIATIONS WILL BE CAUSE FOR REJECTION. REMOVE ALL BURRS AND SHARP EDGES

RELEASED

MS-168 A



PERSONS RECEIVING THIS DRAWING

THE TECHNICAL MATERIEL CORPORATION claims proprietary right in the material disclosed hereon. This drawing is issued in confidence for engineering information only and may not be reproduced or used to manufacture anything shown hereon without permission from THE TECHNICAL MATERIEL CORPORATION to the user. This drawing is loaned for mutual assistance and is subject to recall at any time.

Property of:

THE TECHNICAL MATERIEL CORPORATION
MAMARONECK, NEW YORK

NICK CORNERS
APPROX. 1/8

ISSUE	ITEM	CHANGED FROM	DATE	CN. NO.	DRAFTS	CHECKER	ENG. APP.
A	1	S-404 WAS S-101	12/11/52	1001	EMN		

TOLERANCES		SCALE:
ALL OTHERS	DEC. DIM. ± FRAC. DIM. ± 1/64 ANGULAR DIM. ±	DRILL, PUNCH, COMMERCIAL STOCK SIZES AND MANUFACTURERS TOLERANCES ARE NOT INCLUDED.

FFRD-8	104	A-229	12-12-52
FFRD-7	104	A-229	12-12-52
FFRD-6	104	A-229	12-12-52
FFRD-5	104	A-229	12-12-52
MODEL	PROJECT NO.	ASS'Y. NO.	DATE

REQ. ITEM	PART NO.	DESCRIPTION	SYMBOL
	.040	THE TECHNICAL MATERIEL CORP.	
	STOCK SIZE	MAMARONECK, NEW YORK	
	ALUM.	BRACKET	
	MATERIAL		
	WEIGHT PER PC.		
	52S-H32		
	TYPE & TEMPER		
	HEAT TREAT. SPEC.		
	S-404 YELLOW IRIDITE		
	FINISH & SPEC. NO.		

12-12-52
DRAWN
ELEC. DES. APP.
MECH. DES. APP.
ARB
FINAL APPROVAL

MS-168 A

USED ON

IF IT IS FOUND DESIRABLE TO CHANGE ANY TOLERANCE OR OTHER DETAIL SPECIFIED ON THIS DRAWING NOTIFY THE PURCHASER PROMPTLY.

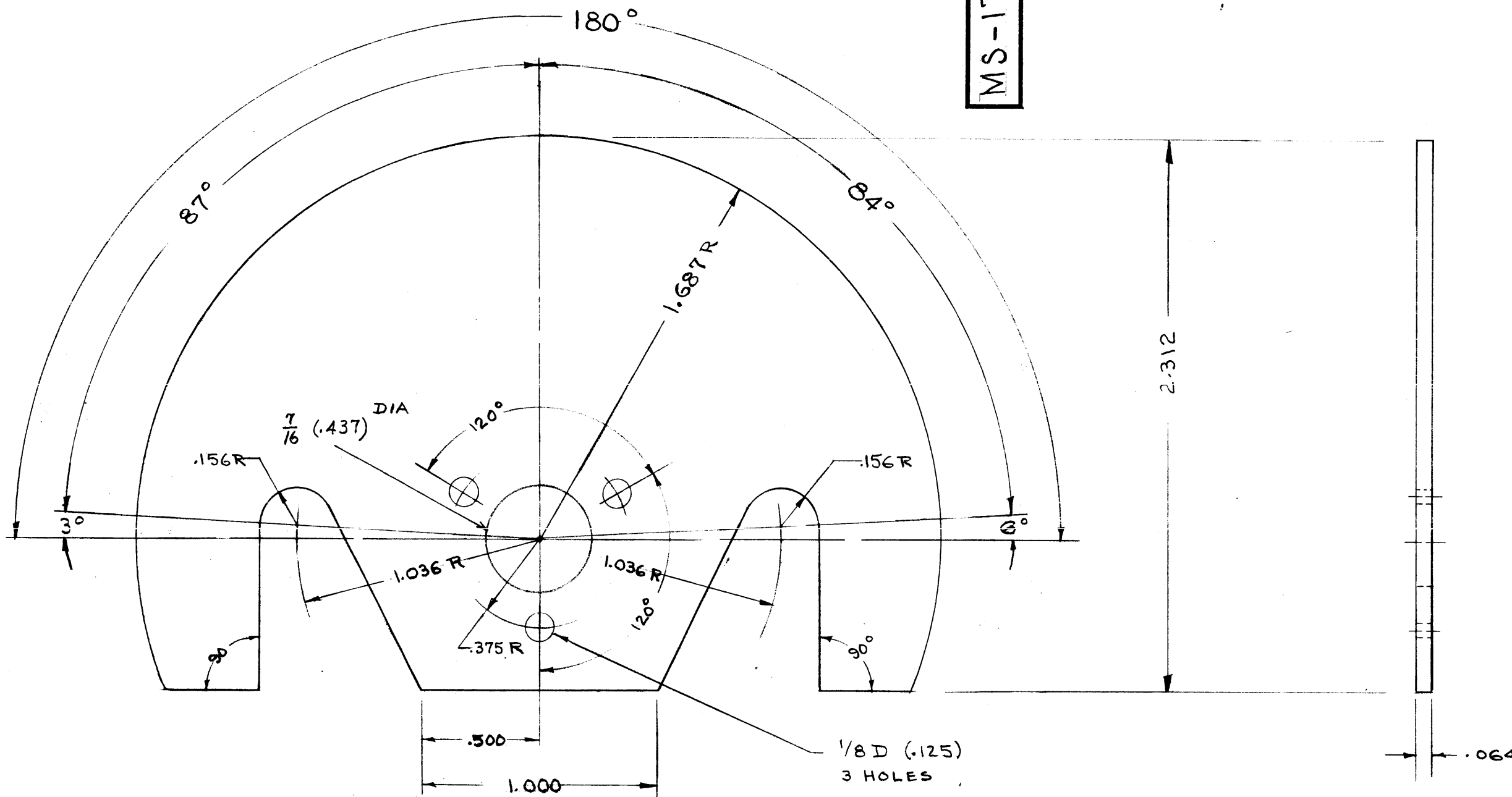
MAXIMUM ALLOWABLE TOLERANCES HAVE BEEN DETERMINED AND DEVIATIONS WILL BE CAUSE FOR REJECTION. REMOVE ALL BURRS AND SHARP EDGES

RELEASED

MS-179 E

MARKING REF.

MODEL	MARKING
FFRD-1	LD-267
FFRD-2	LD-268
FFRD-3	LD-295
FFRD-3M	LD-211
FFRD-5A	LD-129
FFRD-6A	LD-128
FFRD-7B	LD-127
FFRD-8B	LD-125



TO PERSONS RECEIVING THIS DRAWING
 THE TECHNICAL MATERIEL CORPORATION claims proprietary right in the material disclosed hereon. This drawing is issued in confidence for engineering information only and may not be reproduced or used to manufacture anything shown hereon without permission from THE TECHNICAL MATERIEL CORPORATION to the user. This drawing is loaned for mutual assistance and is subject to recall at any time.

Property of:
 THE TECHNICAL MATERIEL CORPORATION
 MAMARONECK, NEW YORK

ISSUE	ITEM	CHANGED FROM	DATE	CN. NO.	DRAFTS	CHECKER	ENG. APP.
E	1	ADDED MARKING REF	2/20/52	10911	A.M.	[Signature]	WCS
D	1	S-404 WAS S-101	12/11/51	1001	AD	[Signature]	EMN
C	2	84° WAS 87° 8° WAS 3°	9/3/51	3	FC	[Signature]	[Signature]
B	2	1.687R WAS 1.718R	12-23-51	2	JAD	[Signature]	G.T.O
A	1	GENERAL REVISION	12-14-51	1	JAD	[Signature]	G.T.O

TOLERANCES	SCALE:
DEC. DIM. ± .005 FRAC. DIM. ± ANGULAR DIM. ± 1°	2" = 1"

DRILL, PUNCH, COMMERCIAL STOCK SIZES AND MANUFACTURERS TOLERANCES ARE NOT INCLUDED.

REQ. PER UNIT	MODEL	PROJECT NO.	ASSY. NO.	DATE
1	FFRD-3M			5-6-55
1	FFRD-5	104	A-236	11/13/52
1	FFRD-6	104	A-236	11/13/52
1	FFRD-7	104	A-236	11/13/52
1	FFRD-8	104	A-236	11/13/52

REQ.	ITEM	PART NO.	DESCRIPTION	SYMBOL
		.064	THE TECHNICAL MATERIEL CORP.	
		ALUMINUM	MAMARONECK, NEW YORK	
		52S-H32	DIAL BLANK	
		G.T.O		
		11/13/52		
		11/14/52		
		5-404 YELLOW IRIDITE		
		MS-179 E		

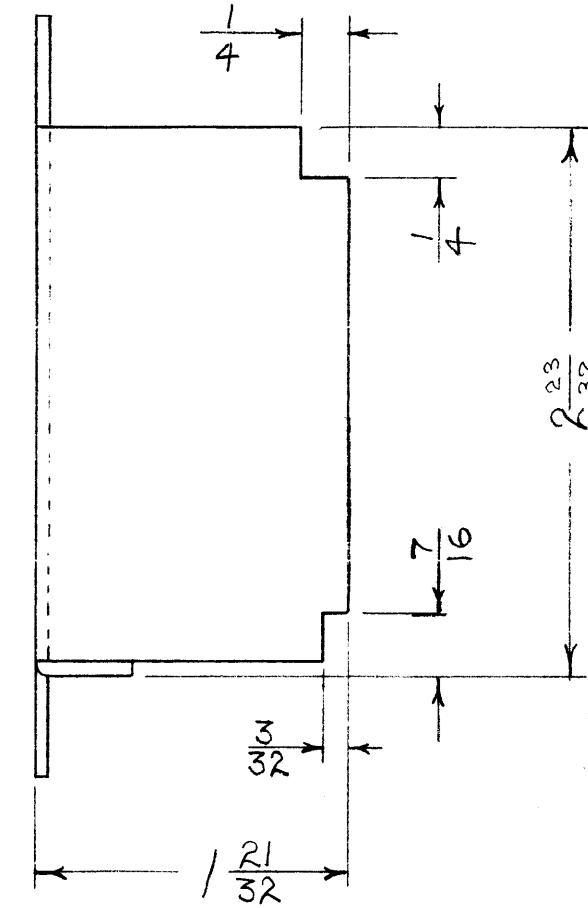
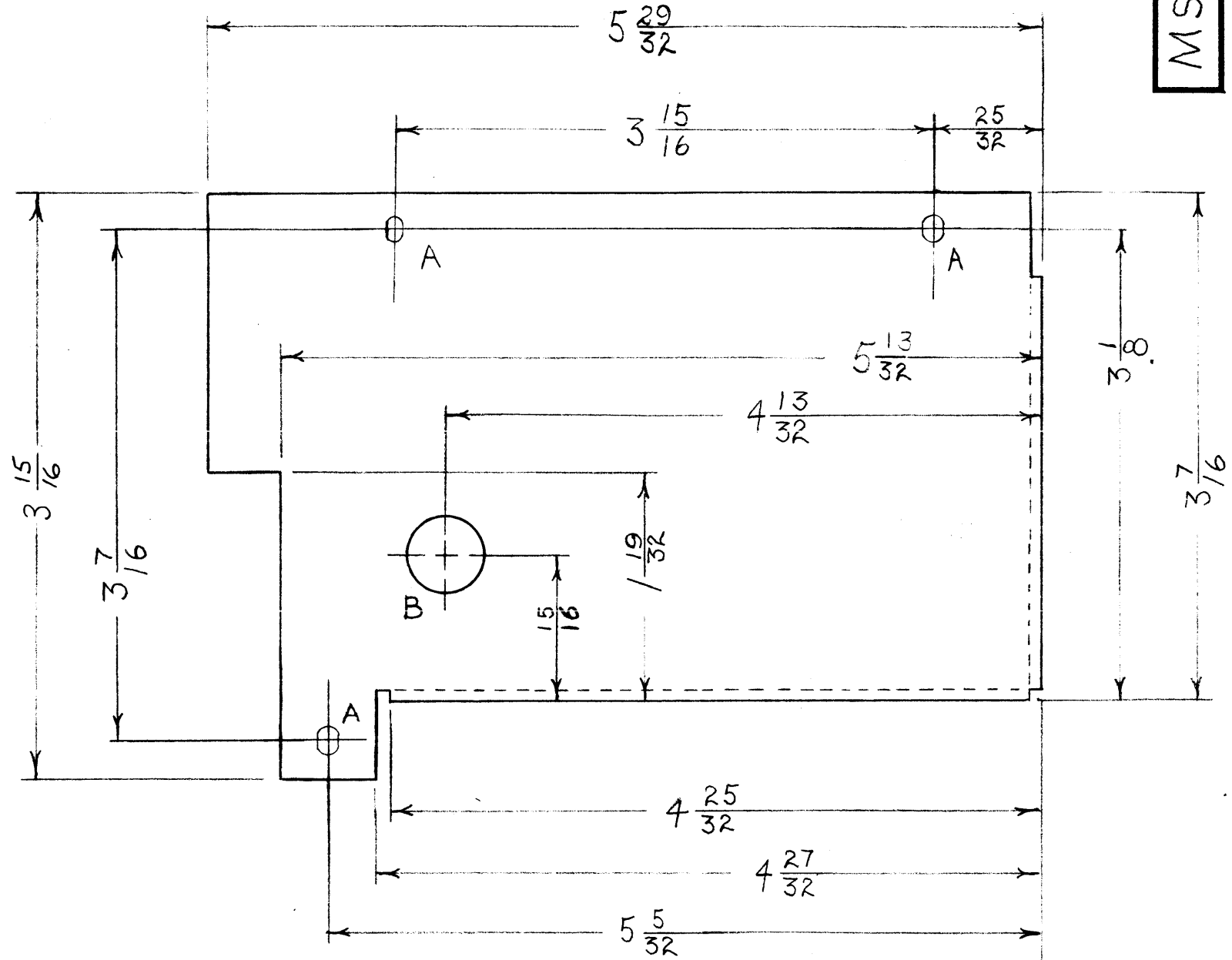
IF IT IS FOUND DESIRABLE TO CHANGE ANY TOLERANCE OR OTHER DETAIL SPECIFIED ON THIS DRAWING NOTIFY THE PURCHASER PROMPTLY.

MAXIMUM ALLOWABLE TOLERANCES HAVE BEEN DETERMINED AND DEVIATIONS WILL BE CAUSE FOR REJECTION. REMOVE ALL BURRS AND SHARP EDGES

RELEASED

MS 181 F

A = 9/64 X 9/32 SLOT - 3 REQ.
 B = 1/2 (.500) DIA - 1 REQ.



NOTICE TO PERSONS RECEIVING THIS DRAWING

THE TECHNICAL MATERIEL CORPORATION claims proprietary right in the material disclosed hereon. This drawing is issued in confidence for engineering information only and may not be reproduced or used to manufacture anything shown hereon without permission from THE TECHNICAL MATERIEL CORPORATION to the user. This drawing is loaned for mutual assistance and is subject to recall at any time.

Property of:
 THE TECHNICAL MATERIEL CORPORATION
 MAMARONECK, NEW YORK



METAL STAMP TMC PART NO. 1/8 HIGH, GOTHIC, W/LATEST REV. LETTER.

REF: LD 2084

F	LD2084 ADDED AS REF	6.9.66	CC	WFO	OC	MS	
E	3-15/16 DIM. WAS 4"	9-11-62	7332	GF	MS	MS	
1	(B) HOLE WAS 5/16 DIA.						
ISSUE	ITEM	CHANGED FROM	DATE	CN. NO.	DRAFTS	CHECKER	ENG. APP.
TOLERANCES		SCALE: FULL					
ALL OTHERS	DEC. DIM. ± FRAC. DIM. ± Y64 AN ULAR DIM. ±		DRILL, PUNCH, COMMERCIAL STOCK SIZES AND MANUFACTURERS TOLERANCES ARE NOT INCLUDED.				

FFR	104	A-122	11-26-52
MODEL	PROJECT NO.	ASS'Y. NO.	DATE
USED ON			

REQ.	ITEM	PART NO.	DESCRIPTION	SYMBOL
		.040	THE TECHNICAL MATERIEL CORP.	
		STOCK SIZE	MAMARONECK. NEW YORK	
		ALUM.	BFO SHIELD	
		MATERIAL		
		52S-H32		
		WEIGHT PER PC.		
		TYPE & TEMPER	WDC 11-26-52	
		HEAT TREAT. SPEC.	DRAWN	ELEC. DES. APP.
			MECH. DES. APP.	
		FINISH & SPEC. NO.	CHECKED	FINAL APPROVAL
				MS 181 F

IF IT IS FOUND DESIRABLE TO CHANGE ANY TOLERANCE OR OTHER DETAIL SPECIFIED ON THIS DRAWING NOTIFY THE PURCHASER PROMPTLY.

RELEASED

MAXIMUM ALLOWABLE TOLERANCES HAVE BEEN DETERMINED AND DEVIATIONS WILL BE CAUSE FOR REJECTION. REMOVE ALL BURRS AND SHARP EDGES

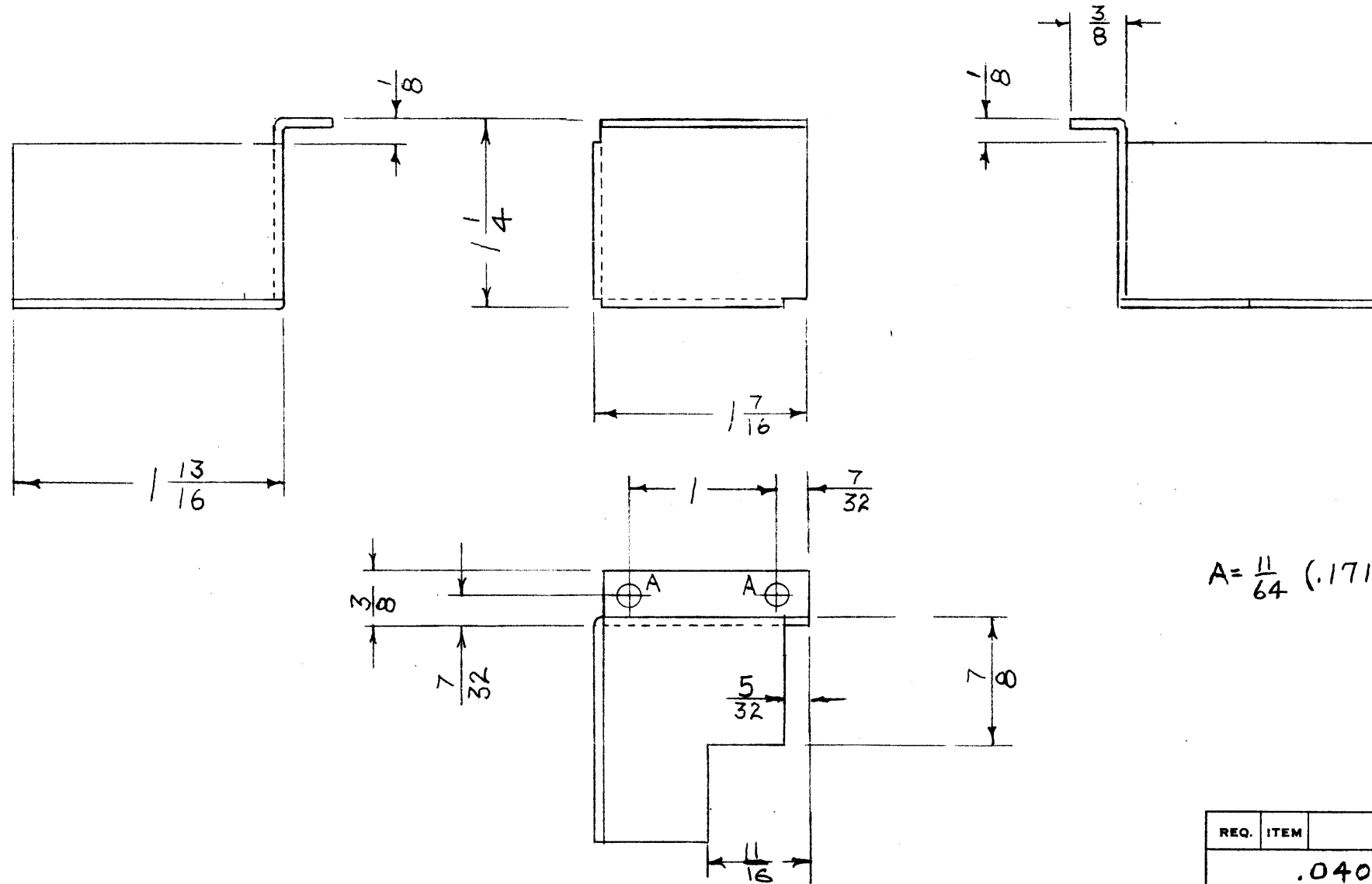
MS-187 C

NOTICE TO PERSONS RECEIVING THIS DRAWING

THE TECHNICAL MATERIEL CORPORATION claims proprietary right in the material disclosed hereon. This drawing is issued in confidence for engineering information only and may not be reproduced or used to manufacture anything shown hereon without permission from THE TECHNICAL MATERIEL CORPORATION to the user. This drawing is loaned for mutual assistance and is subject to recall at any time.

Property of:

THE TECHNICAL MATERIEL CORPORATION
MAMARONECK, NEW YORK



A = 11/64 (.171) DIA. - 2 HOLES

ISSUE	ITEM	CHANGED FROM	DATE	CN. NO.	DRAFTS	CHECKER	ENG. APP.
C	1	S-404 WAS S-101	12/4/59	1001	WDC		EAM
B	1	LIP REMOVED	3/10/58	2	HAD		
A	1	5/32 WAS 3/32	4/20/53	1	WDC	PMA	P216

MODEL	PROJECT NO.	ASSY. NO.	DATE
FFRD-3M			3/10/58
FFRD-1-2-3	E-458-P		4/16/56
FFRD-8	104	A-236	12-30-52
FFRD-7	104	A-236	12-30-52
FFRD-6	104	A-236	12-30-52
FFRD-5	104	A-236	12-30-52

REQ.	ITEM	PART NO.	DESCRIPTION	SYMBOL
		.040	THE TECHNICAL MATERIEL CORP.	
		STOCK SIZE	MAMARONECK, NEW YORK	
		ALUM.	SHIELD, PLUG	
		MATERIAL		
		WEIGHT PER PC.		
		52S-H32		
		TYPE & TEMPER	WDC 12-30	
		HEAT TREAT. SPEC.	ELEC. DES. APP.	MECH. DES. APP.
			ARB	
			CHECKED	FINAL APPROVAL
		S-404 YELLOW IRIDITE		
		FINISH & SPEC. NO.		

TOLERANCES	SCALE:	DRILL, PUNCH, COMMERCIAL STOCK SIZES AND MANUFACTURERS TOLERANCES ARE NOT INCLUDED.
ALL OTHERS	DEC. DIM. ±	
	FRAC. DIM. ± 1/64	
	ANGULAR DIM. ±	

MS-187 C