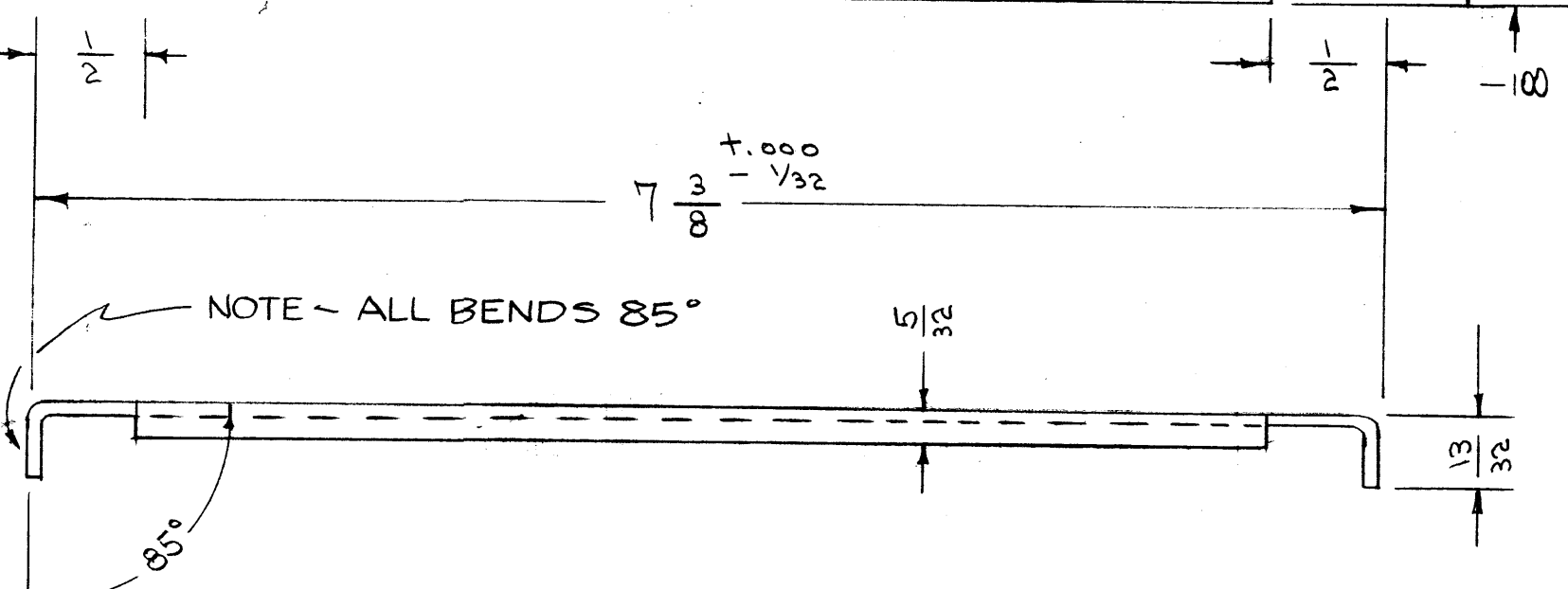
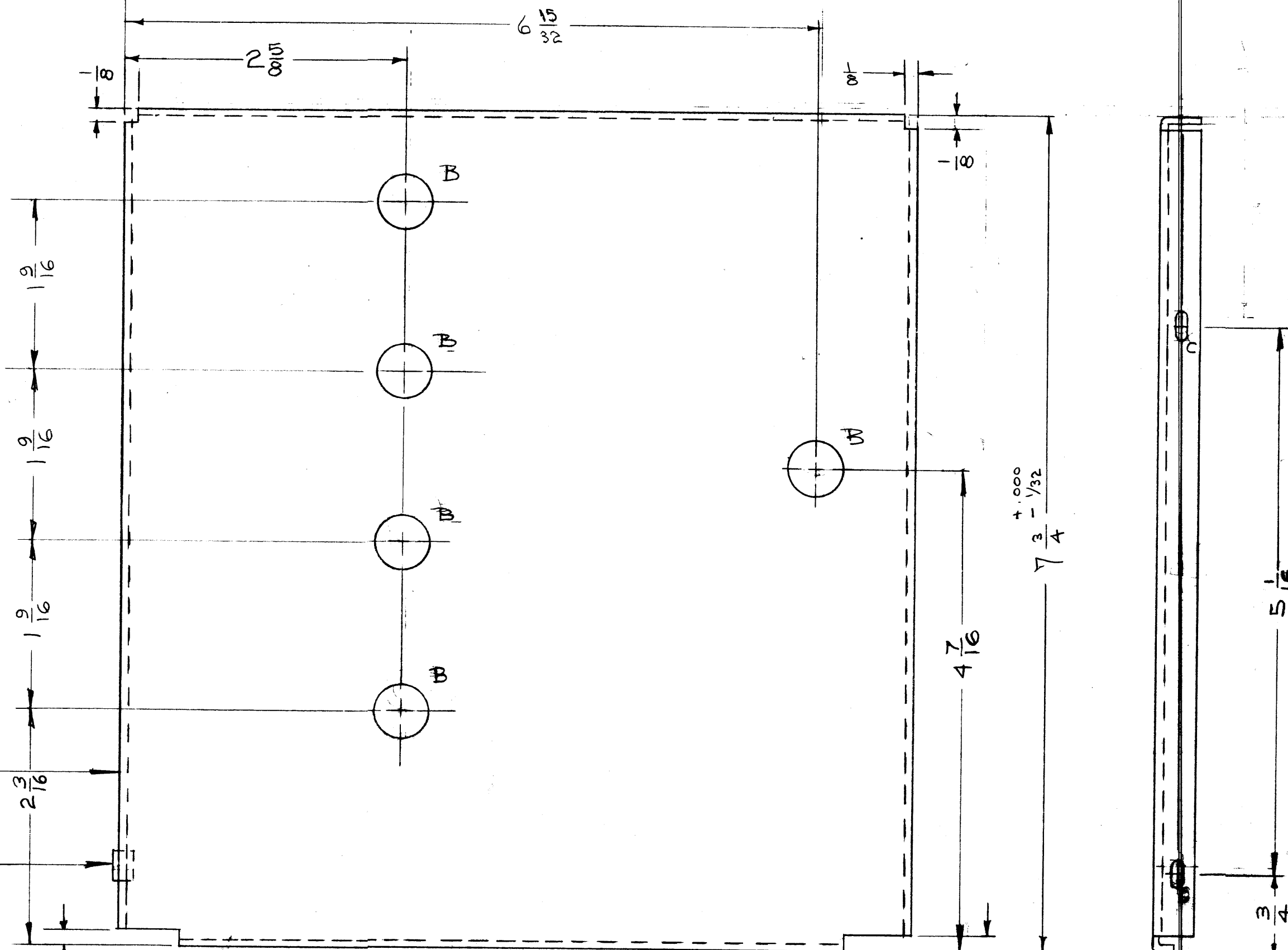
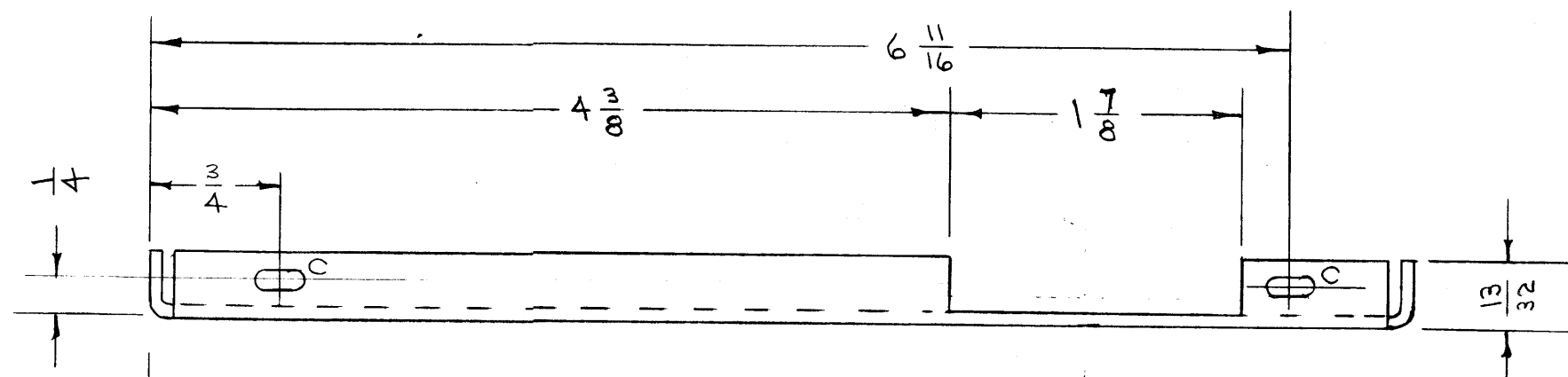
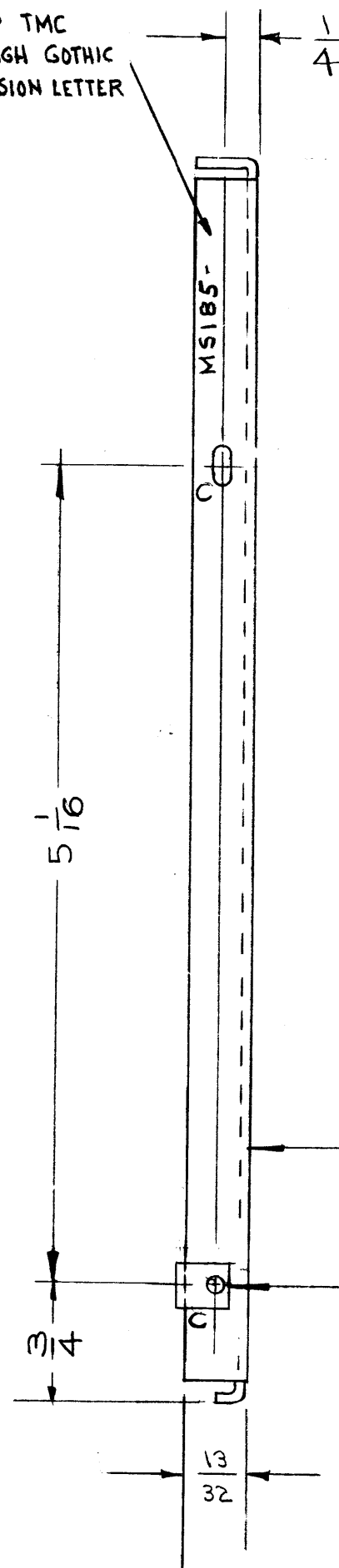


IF IT IS FOUND DESIRABLE TO CHANGE ANY TOLERANCE OR OTHER DETAIL SPECIFIED ON THIS DRAWING NOTIFY THE PURCHASER PROMPTLY.

MAXIMUM ALLOWABLE TOLERANCES HAVE BEEN DETERMINED AND DEVIATIONS WILL BE CAUSE FOR REJECTION. REMOVE ALL BURRS AND SHARP EDGES

METAL STAMP TMC
PART NO. 1/8 HIGH GOTHIC
W/LATEST REVISION LETTER



NOTE - ALL BENDS 85°

NOT TO BE REPRODUCED WITHOUT THE WRITTEN PERMISSION OF THE TECHNICAL MATERIEL CORPORATION

THE TECHNICAL MATERIEL CORPORATION claims proprietary right in the material disclosed herein. This drawing is issued in confidence for engineering information only and may not be reproduced or used to manufacture anything shown hereon without permission from THE TECHNICAL MATERIEL CORPORATION to the user. This drawing is loaned for mutual assistance and is subject to recall at any time.

Property of:

THE TECHNICAL MATERIEL CORPORATION
MAMARONECK, NEW YORK

B-1/2 (.500) D. 5 REQ'D.
C-3/16 X 1/4 PUNCH 6 REQ'D.

MS 185 G

LETTERING	USED ON
LD312 - 3M	FFRD - 3M
-5	-5A
-6	-6A
-7	-7B
LD 312 - 8	FFRD - 8B

NOTE:
HARDWARE WILL BE SUPPLIED
AND INSTALLED BY TMC.

REF-TMC DWG NO. LD312

61	NT-108-4	NUT, SPEED	6-32
REQ. ITEM	PART NO.	DESCRIPTION	SYMBOL
.051		THE TECHNICAL MATERIEL CORP. MAMARONECK, NEW YORK	
ALUMINUM		BOTTOM COVER ASSY.	
MATERIAL		WEIGHT PER PC.	
52S H32			
TYPE & TEMPER		C.D.D. 4-8-53	
HEAT TREAT. SPEC.		DRAWN	
S. 304 XE IRIDITE		ELEC. DES. APP.	
FINISH & SPEC. NO.		MECH. DES. APP.	
		CHECKED	
		FINAL APPROVAL	
		MS 185 G	

FFRD-8		A-236	
FFRD-7		A-236	
FFRD-6		A-236	
FFRD-5		A-236	
MODEL	PROJECT NO.	ASS'Y. NO.	DATE
USED ON			

G	THIS DWG. SUPERSEDES A 319	2-17-65	13513		
ISSUE ITEM	CHANGED FROM	DATE	CN. NO.	DRAFTS	CHECKER
TOLERANCES		SCALE:			
ALL OTHERS	DEC. DIM. ± FRAC. DIM. ± ANGULAR DIM. ±	DRILL, PUNCH, COMMERCIAL STOCK SIZES AND MANUFACTURERS TOLERANCES ARE NOT INCLUDED.			