

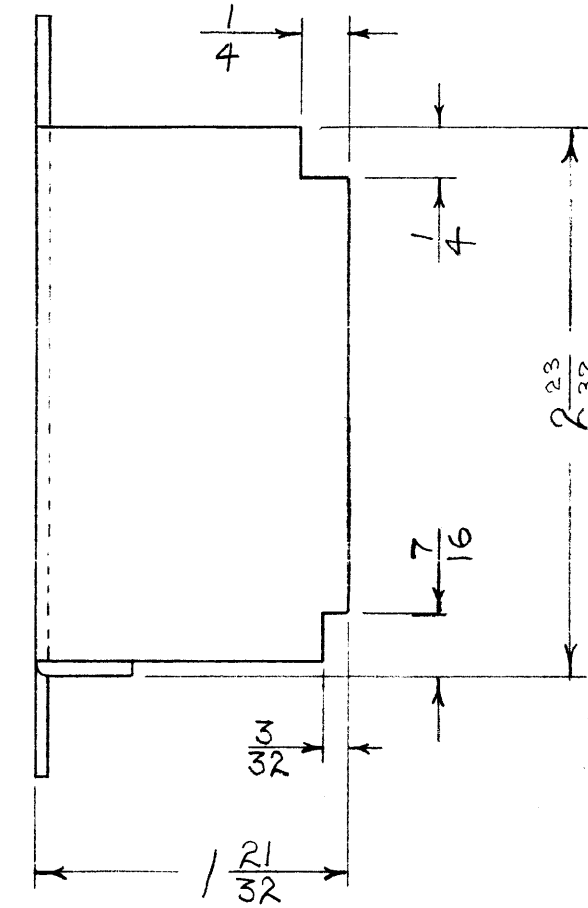
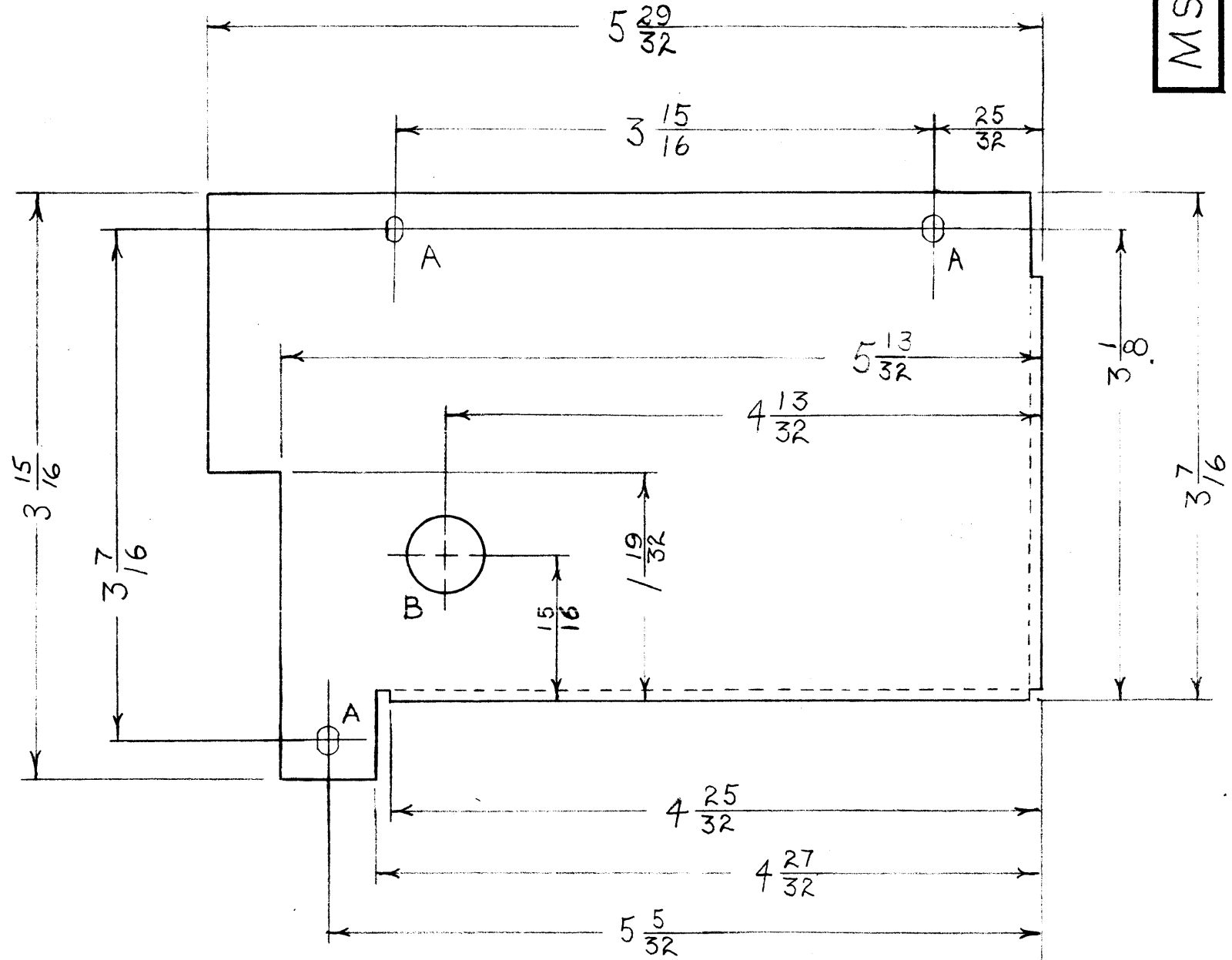
IF IT IS FOUND DESIRABLE TO CHANGE ANY TOLERANCE OR OTHER DETAIL SPECIFIED ON THIS DRAWING NOTIFY THE PURCHASER PROMPTLY.

MAXIMUM ALLOWABLE TOLERANCES HAVE BEEN DETERMINED AND DEVIATIONS WILL BE CAUSE FOR REJECTION. REMOVE ALL BURRS AND SHARP EDGES

RELEASED

MS 181 F

A = 9/64 X 9/32 SLOT - 3 REQ.
 B = 1/2 (.500) DIA - 1 REQ.



NOTICE TO PERSONS RECEIVING THIS DRAWING
 THE TECHNICAL MATERIEL CORPORATION claims proprietary right in the material disclosed hereon. This drawing is issued in confidence for engineering information only and may not be reproduced or used to manufacture anything shown hereon without permission from THE TECHNICAL MATERIEL CORPORATION to the user. This drawing is loaned for mutual assistance and is subject to recall at any time.
 Property of:
 THE TECHNICAL MATERIEL CORPORATION
 MAMARONECK, NEW YORK

REF: LD 2084

REQ.	ITEM	PART NO.	DESCRIPTION	SYMBOL
		.040	THE TECHNICAL MATERIEL CORP.	
		STOCK SIZE	MAMARONECK. NEW YORK	
		ALUM.	BFO SHIELD	
		MATERIAL		
		WEIGHT PER PC.		
		52S-H32		
		TYPE & TEMPER		
		HEAT TREAT. SPEC.		
		5-404 YELLOW IRIDITE		
		FINISH & SPEC. NO.		

ISSUE	ITEM	CHAN ED FROM	DATE	CN. NO.	DRAFTS	CHECKER	ENG. APP.
F	2	LD2084 ADDED AS REF	6-9-66	CC	WJO		
E	1	B) HOLE WAS 5/16 DIA.	9-11-62	7332	GF.		

TOLERANCES		SCALE:
ALL OTHERS	DEC. DIM. ± FRAC. DIM. ± Y64 AN ULAR DIM. ±	FULL

METAL STAMP TMC PART NO 1/8 HIGH, GOTHIC, W/LATEST REV. LETTER.

MODEL	PROJECT NO.	ASS'Y. NO.	DATE
FFR	104	A-122	11-26-52