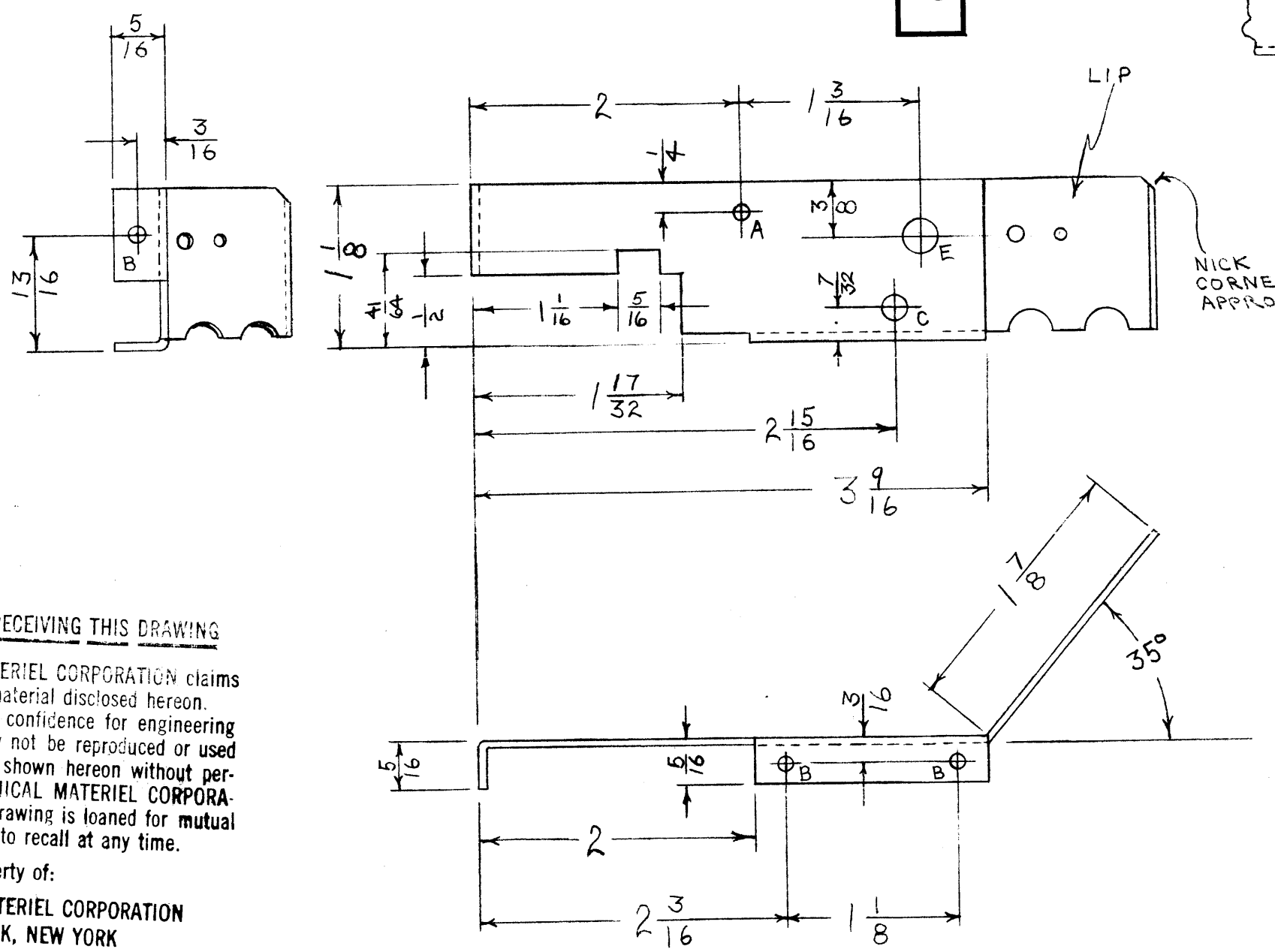
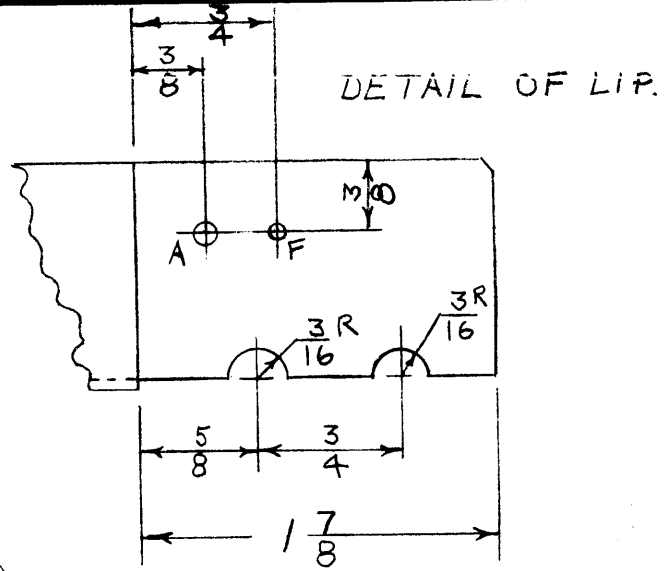


IF IT IS FOUND DESIRABLE TO CHANGE ANY TOLERANCE OR OTHER DETAIL SPECIFIED ON THIS DRAWING NOTIFY THE PURCHASER PROMPTLY.

MAXIMUM ALLOWABLE TOLERANCES HAVE BEEN DETERMINED AND DEVIATIONS WILL BE CAUSE FOR REJECTION. REMOVE ALL BURRS AND SHARP EDGES

RELEASED

MS-166 B



- A = 1/8 (.125) DIA. - 2 HOLES
- B = 9/64 (.140) DIA. - 3 HOLES
- C = 3/16 (.187) DIA. - 1 HOLE
- E = 1/4 (.250) DIA. - 1 HOLE
- F = 3/32 (.093) DIA. - 1 HOLE

NOTICE TO PERSONS RECEIVING THIS DRAWING
 THE TECHNICAL MATERIEL CORPORATION claims proprietary right in the material disclosed hereon. This drawing is issued in confidence for engineering information only and may not be reproduced or used to manufacture anything shown hereon without permission from THE TECHNICAL MATERIEL CORPORATION to the user. This drawing is loaned for mutual assistance and is subject to recall at any time.

Property of:
 THE TECHNICAL MATERIEL CORPORATION
 MAMARONECK, NEW YORK

REQ. ITEM	PART NO.	DESCRIPTION	SYMBOL
	.040	THE TECHNICAL MATERIEL CORP.	
	STOCK SIZE	MAMARONECK. NEW YORK	
	ALUM. -#	CENTER SHIELD	
	MATERIAL		
	WEIGHT PER PC.		
	52S-H32		
	TYPE & TEMPER		
	HEAT TREAT. SPEC.		
	S-404 YELLOW IRIDITE.		
	FINISH & SPEC. NO.		

ISSUE	ITEM	CHANGED FROM	DATE	CN. NO.	DRAFTS	CHECKER	ENG. APP.
B	1	S-404 WAS S-101	12/1/52	1001	MS		EMN
A	1	A HOLE DELETED. F HOLE ADDED. DIM. CHANGED	2/24/53	1	WDC	PJB	PJB

MODEL	PROJECT NO.	ASS'Y. NO.	DATE
FFRD-8	104	A-229	10-15-52
FFRD-7	104	A-229	10-15-52
FFRD-6	104	A-229	10-15-52
FFRD-5	104	A-229	10-15-52

SCALE: $\frac{1}{16}$
 DRILL, PUNCH, COMMERCIAL STOCK SIZES AND MANUFACTURERS TOLERANCES ARE NOT INCLUDED.

ALL OTHERS
 DEC. DIM. \pm
 FRAC. DIM. \pm 1/64
 ANGULAR DIM. \pm

USED ON

MS-166 B