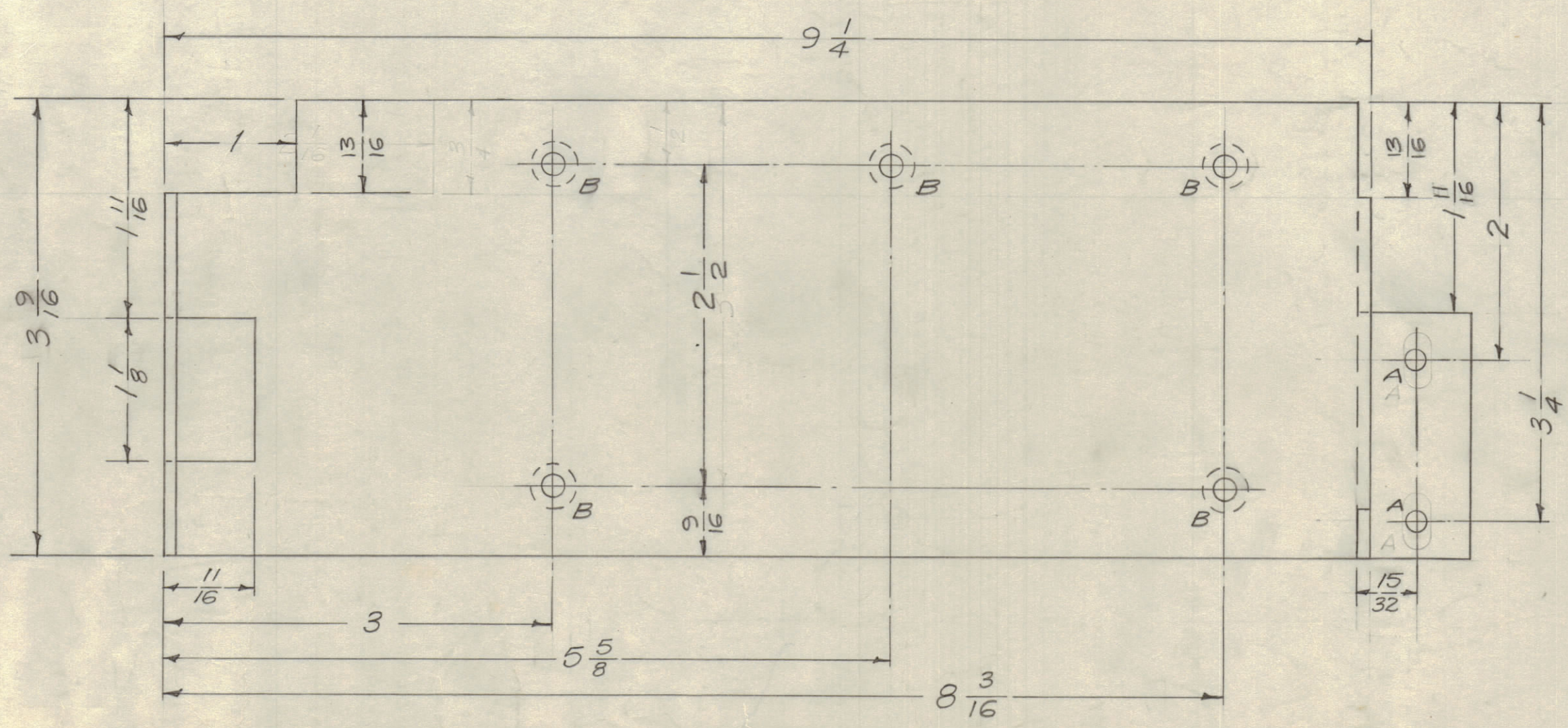
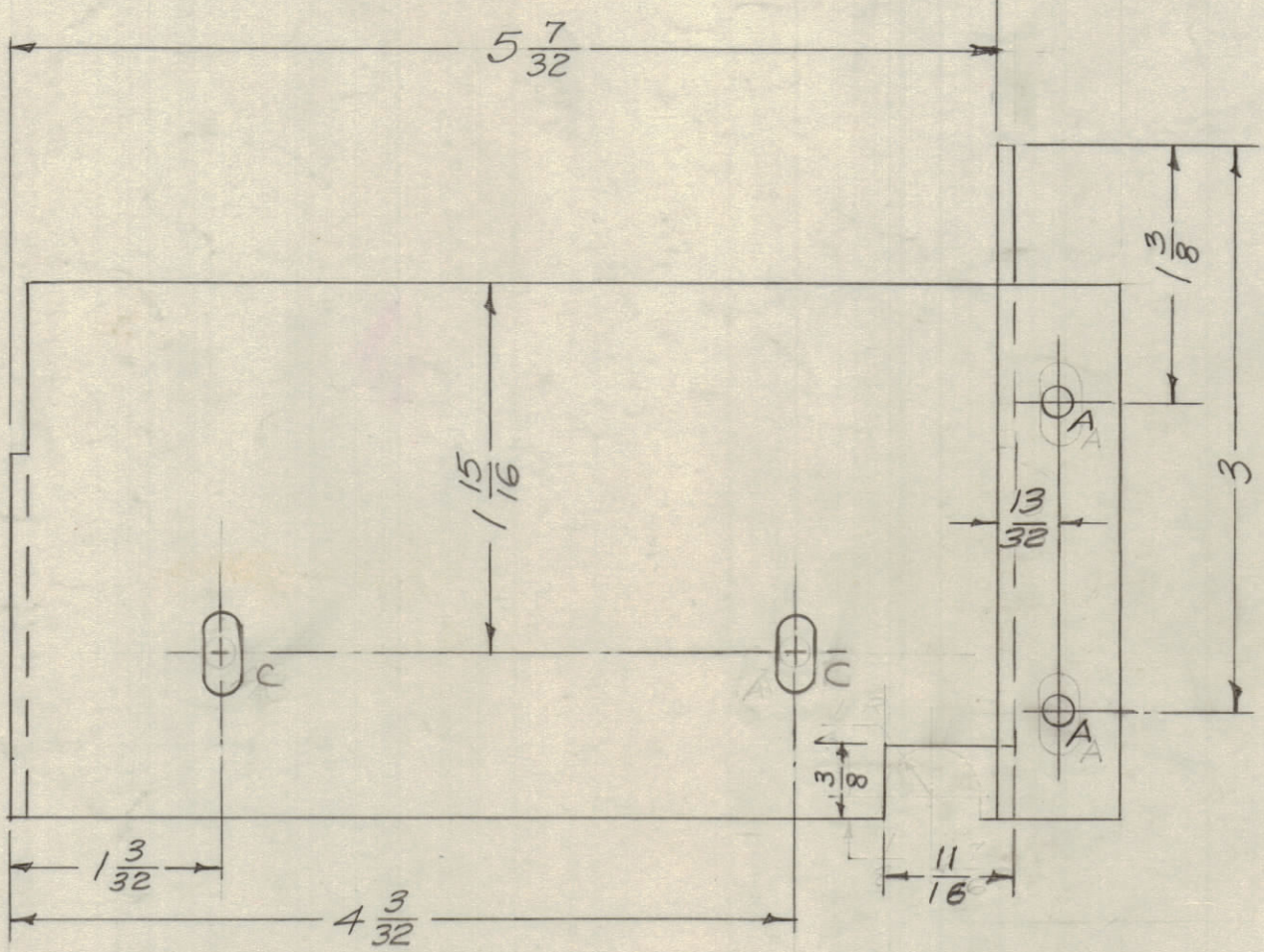
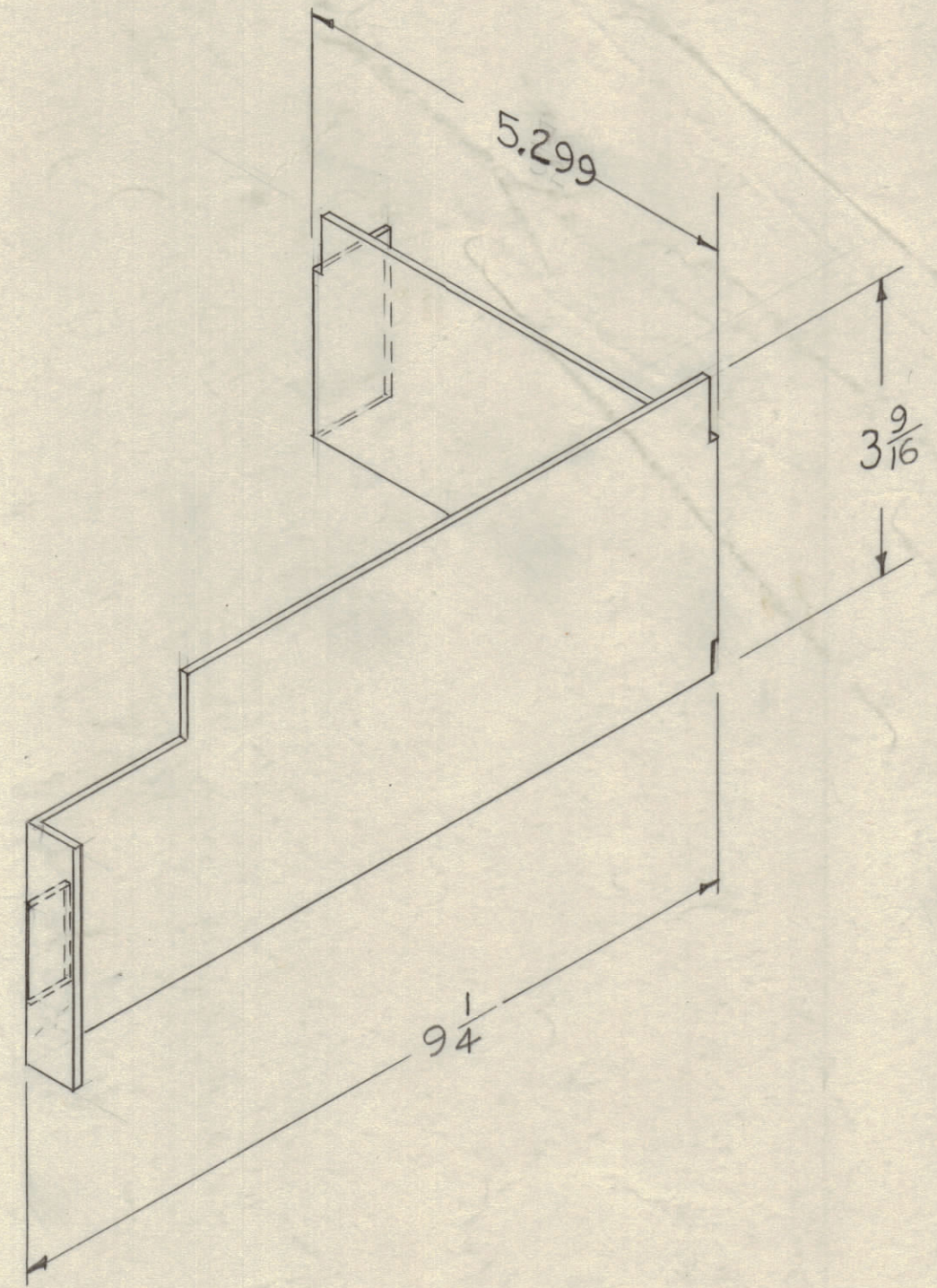
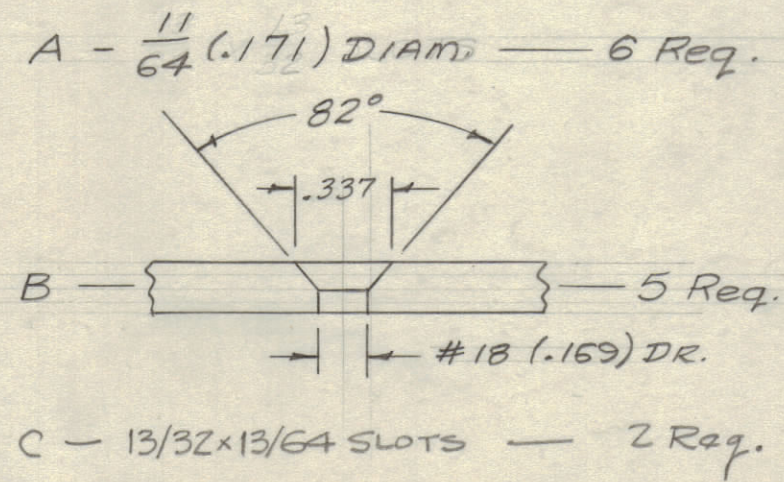
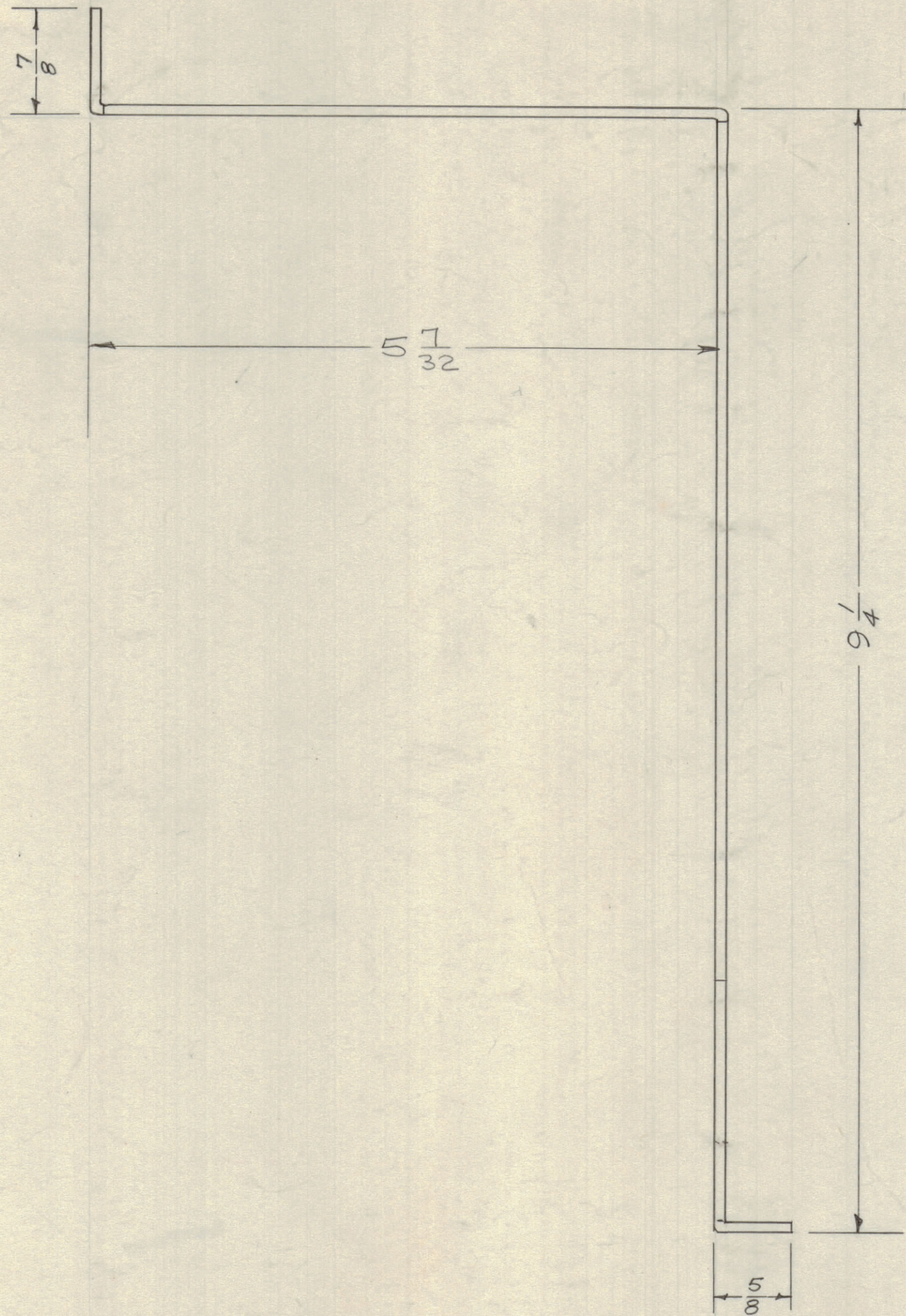


IF IT IS FOUND DESIRABLE TO CHANGE ANY TOLERANCE OR OTHER DETAIL SPECIFIED ON THIS DRAWING NOTIFY THE PURCHASER PROMPTLY.
 MAXIMUM ALLOWABLE TOLERANCES HAVE BEEN DETERMINED AND DEVIATIONS WILL BE CAUSE FOR REJECTION. REMOVE ALL BURRS AND SHARP EDGES



NOTICE TO PERSONS RECEIVING THIS DRAWING

THE TECHNICAL MATERIEL CORPORATION claims proprietary right in the material disclosed herein. This drawing is issued in confidence for engineering information only and may not be reproduced or used to manufacture anything shown herein without permission from THE TECHNICAL MATERIEL CORPORATION to the user. This drawing is loaned for mutual assistance and is subject to recall at any time.

Property of:
 THE TECHNICAL MATERIEL CORPORATION
 MAMARONECK, NEW YORK

D	1	ØC holes added	8/26/58	+	SM	APB
C	1	S-404 YEL. IRIDITE WAS 9/164	1001	AB	EMN	
B	1	3/8 x 11/16 NOTCH WAS A SLOT (1/2")	4/23/58	2	16	APB
A	4	BASELINE CHECK FOR 3/16 - 2 1/2" DIM				
	3	1 1/16 WAS 1 - 5/8	3/17/58	1	15	APB
	2	1 3/16 WAS 3/4				
	1	1" WAS 2 - 1/16"				
	1	"A" HYPERS WERE 15/64 x 13/32 SLOTS				

ISSUE	ITEM	CHANGED FROM	DATE	CM. NO.	DRAFTS	CHECKER	ENG. APP.
TOLERANCES		SCALE:					
ALL	DEC. DIM. ±	DRILL PUNCH, COMMERCIAL STOCK					
OTHERS	FRAC. DIM. ±	SIZES AND MANUFACTURERS					
	ANGULAR DIM. ±	TOLERANCES ARE NOT INCLUDED.					

1	SBE-3	AD-101	11-25-59
1	SBE-2	A-1516	5-2-58
1	SBE-1	380	6-28-57
REQ PER UNIT	MODEL	PROJECT NO.	ASSY. NO.
			DATE

REQ. ITEM	PART NO.	DESCRIPTION	SYMBOL
	.081 THK.	THE TECHNICAL MATERIEL CORP.	
	STOCK SIZE	MAMARONECK, NEW YORK	
	ALUMINUM	SUPPORT, OVEN	
	MATERIAL	WEIGHT PER PC.	
	5052-H32		
	TYPE & TEMPER	16628-57	20
	HEAT TREAT. SPEC.	APB	APB
	CHECKED	MECH. DES. APP.	
		FINAL APPROVAL	
			MS-1091 D

MS-1091 D